

Toronto Preservation Board

July 2, 2020



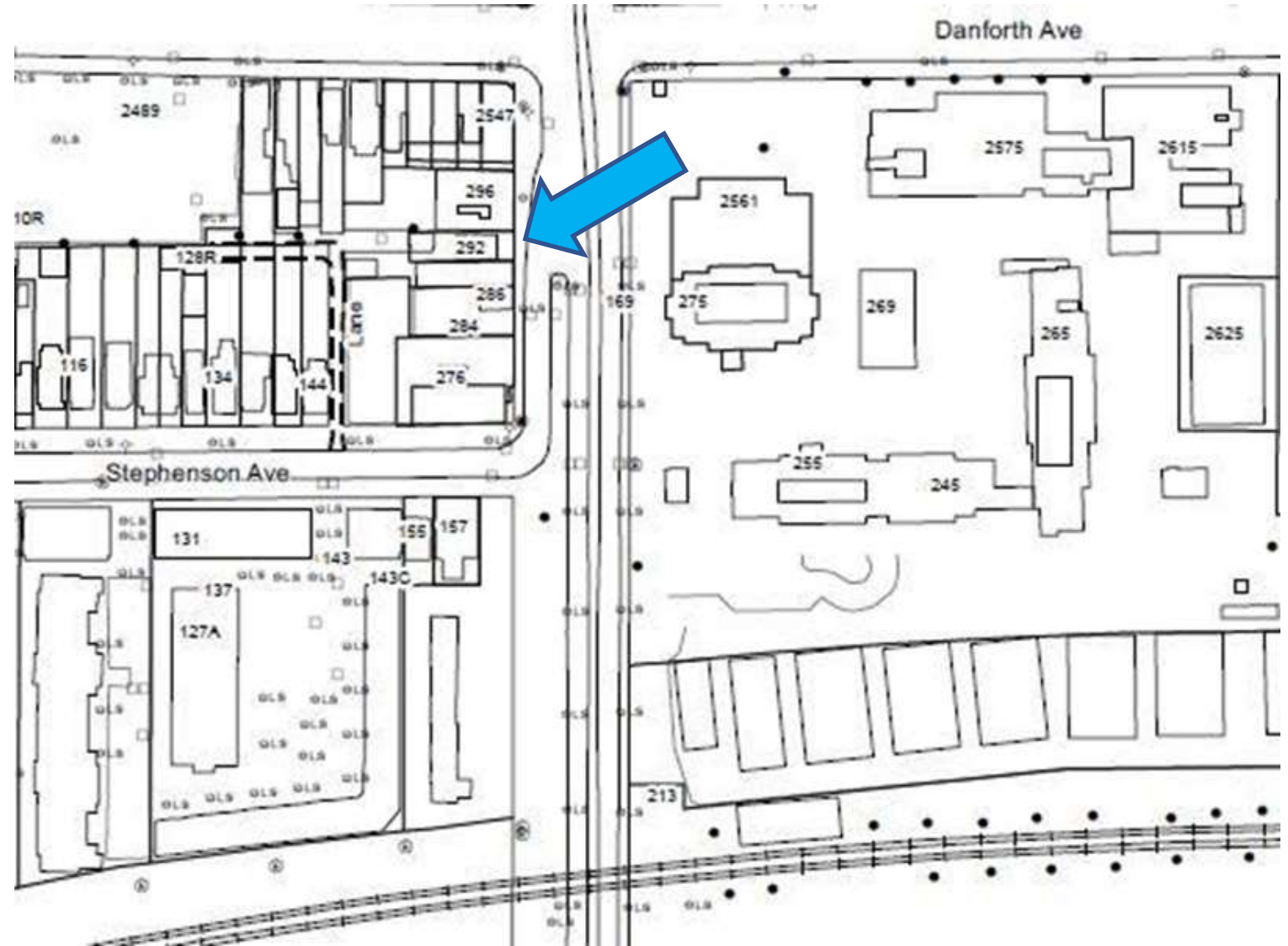


PB15.8

Inclusion on the City of Toronto's Heritage Register, Intention to Designate under Part IV, Section 29 of the Ontario Heritage Act, Alterations to a Heritage Property and Authority to Enter into a Heritage Easement Agreement - 292 Main Street (Ward 19)

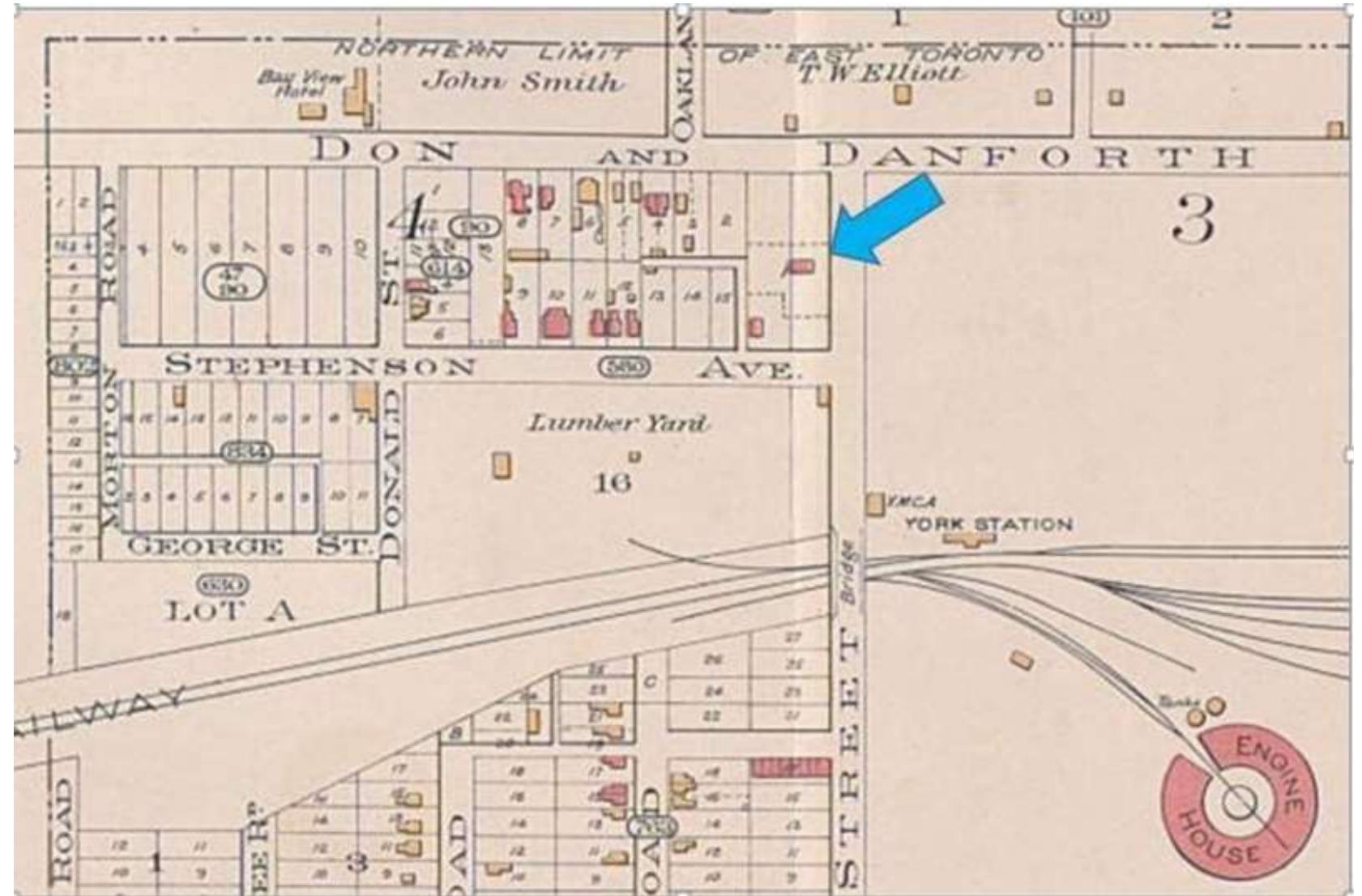
PB15.8 292 Main Street

Location Map, 292 Main Street:
showing the property on the
west side of the street between
Danforth Avenue and
Stephenson Avenue
(City of Toronto Property Data Map).



PB15.8 292 Main Street

1890 Goad's Atlas Map
showing the location of
the property at 292 Main
Street (formerly 256
Main Street)



PB15.8 292 Main Street

Comparative example of a brick Ontario Cottage with similar openings and brickwork detailing to the south elevation at 292 Main Street. (Purves)



Current photo of the south elevation, showing the original principal (south) elevation with its Ontario Cottage styling and arrangement of openings, including a centred entrance, flanked by a window opening to either side, and surmounted by a centred roof gable containing a pointed-arched opening. Currently the entrance and window openings on the south elevation are filled with brick. (Heritage Planning, 2018)



PB15.8 292 Main Street

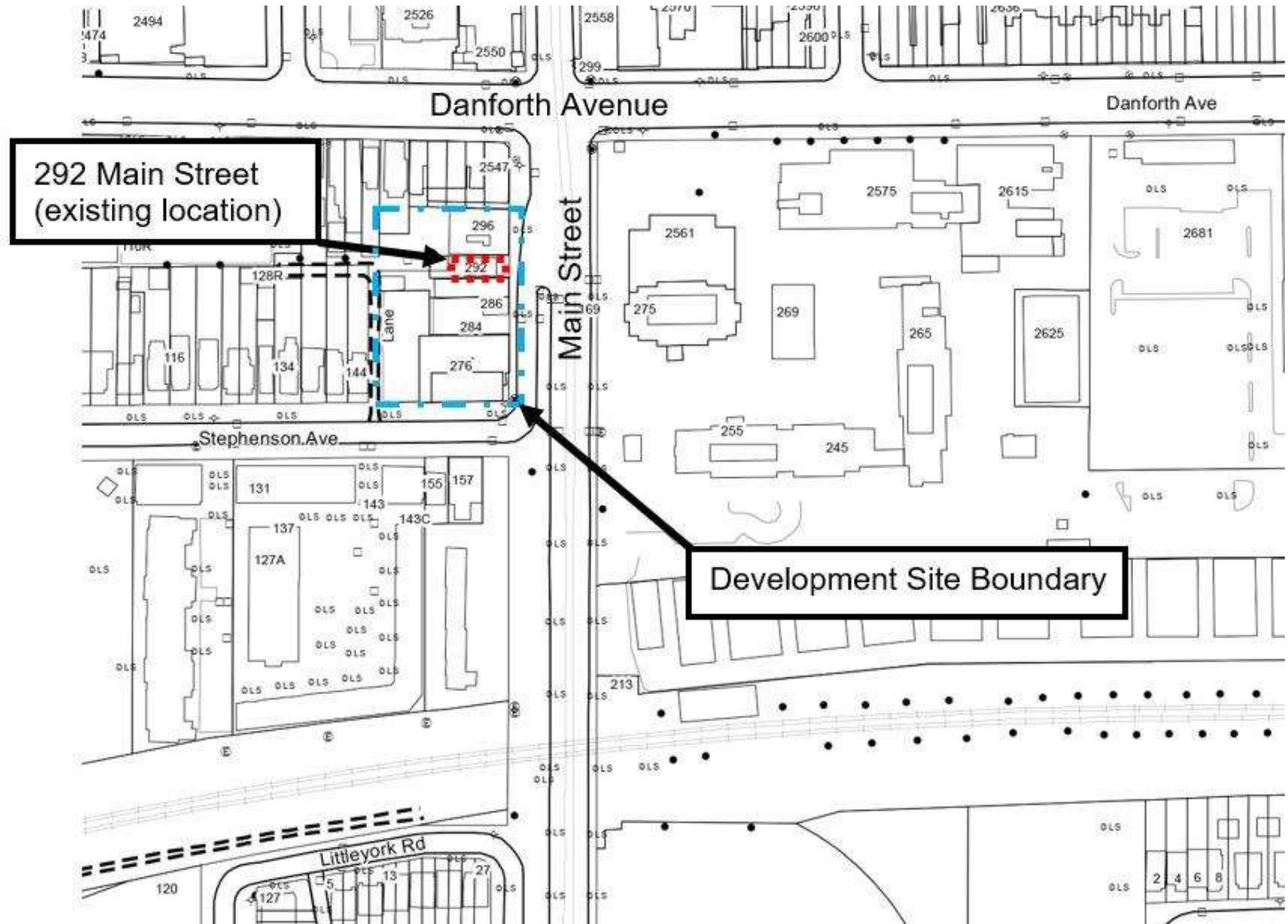
Archival photo showing the subject property on the west side of Main Street in 1926. The former principal (south) elevation has been hidden by the adjacent two-storey commercial building directly south. (City of Toronto Archives).



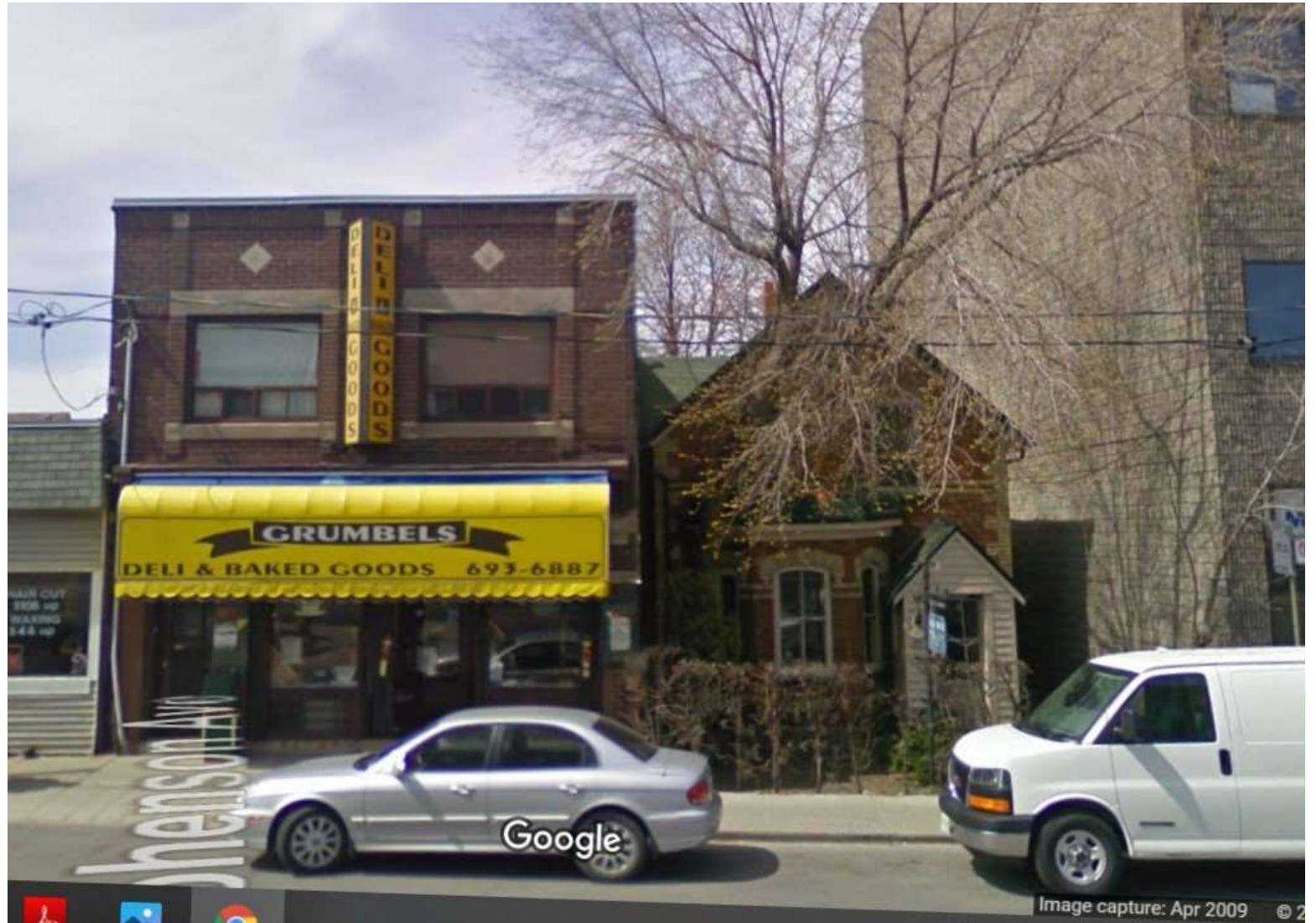
Current photo showing the (now) principal east elevation. (Heritage Planning, 2019)



PB15.8 292 Main Street



PB15.8
292 Main Street

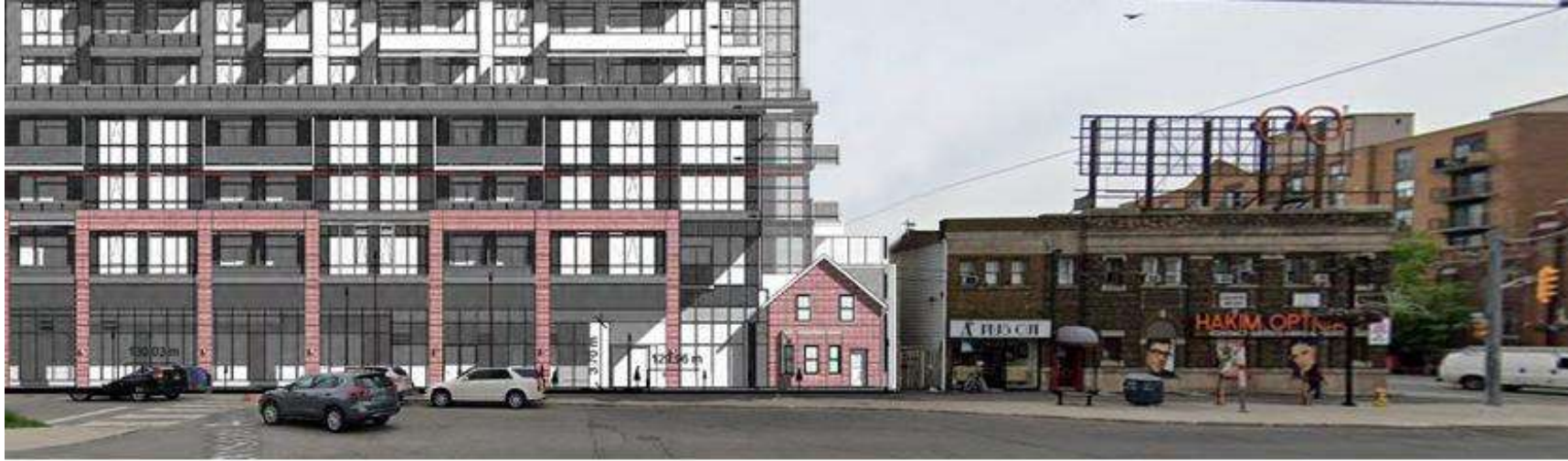


Existing East Elevation

PB15.8 292 Main Street



Full Elevation of Proposal

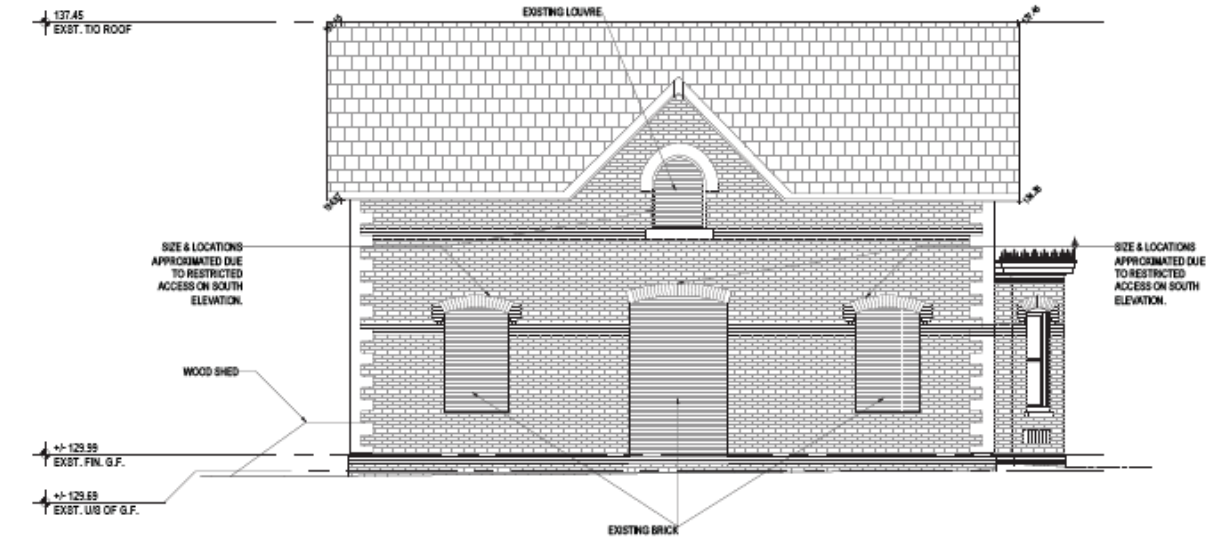


Proposed Development



Existing Streetscape

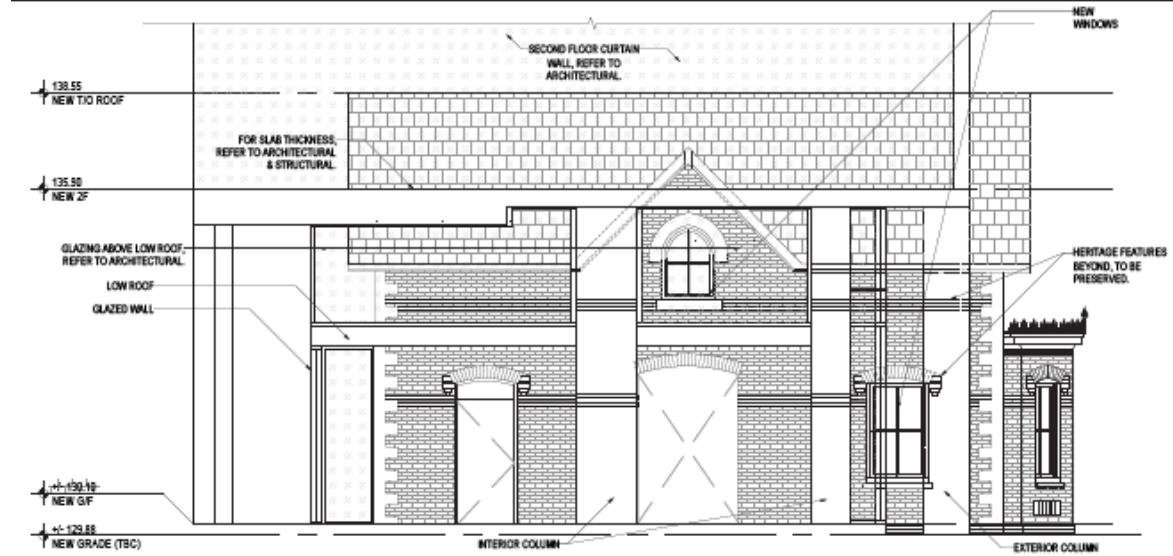
PB15.8 292 Main Street



Existing South Elevation

Existing South Elevation

Scale 1:100



Proposed South Elevation

Proposed South Elevation

Scale 1:100