



PB19.3

Intention to Designate under Part IV, Section 29 of the Ontario Heritage Act - 41 Spadina Road (Ward 11)

PB19.3 41 Spadina Road



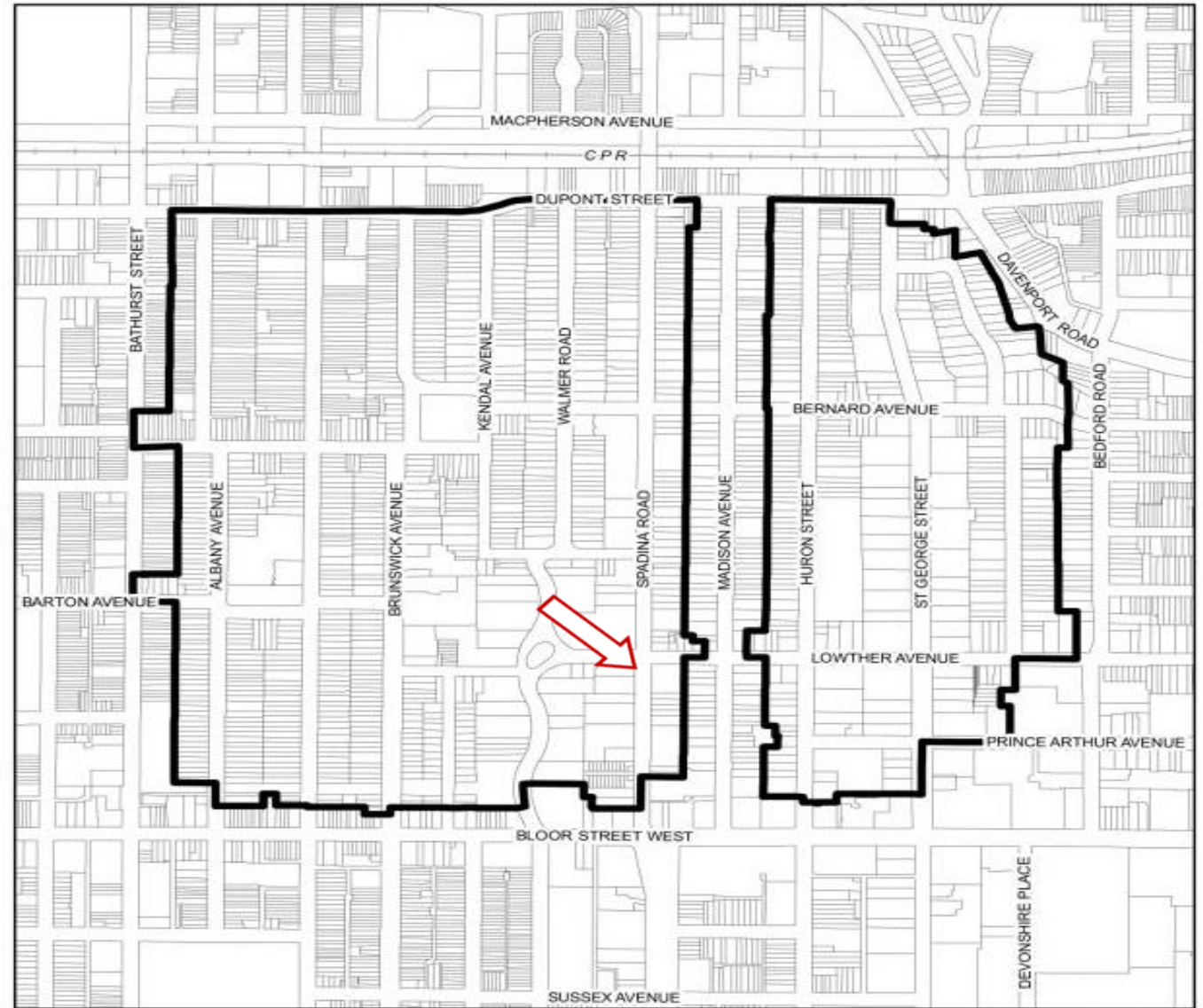
Aerial view of the property at 41 Spadina Road, looking east
(Google Maps, 2020)



City of Toronto INview Map: showing the location and approximate boundaries with the building footprint at 41 Spadina Road, including the entrance address at 45 Spadina Road

This location map is for information purposes only; the exact boundaries of the properties are not shown.

PB19.3 41 Spadina Road



Map of the West Annex Phase 2 Study Area

PB19.3 41 Spadina Road



Spadina Gardens, photographed by the Toronto Historical Board in 1978 showing the principal west façade facing Spadina Road at the corner with Lowther Avenue (Toronto Historical Board, 1978)



Spadina Gardens, principal, west elevation facing Spadina Road (Heritage Planning, 2020)

PB19.3
41 Spadina Road



Principal entrance bay at 41 Spadina Road



Photograph showing the carved stone elements of the door case, the keystone with acanthus leaf moulding and the dragons on the impost blocks and the etched glass details of the transom with the entrance numbers and the 'S' and 'G' on the pair of doors (partly obscured by temporary signage)

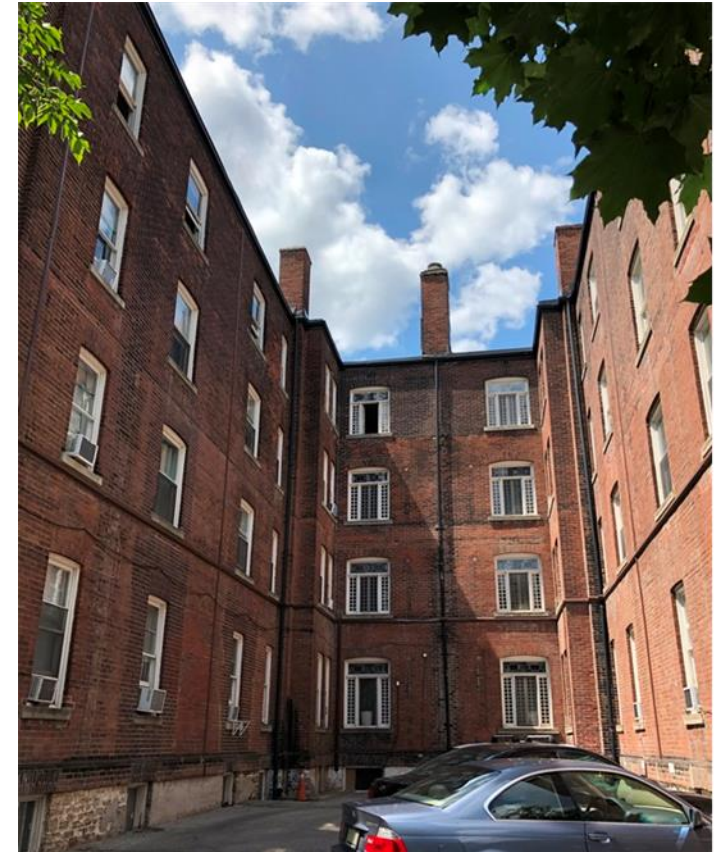
PB19.3
41 Spadina Road



Photograph of the cornice detail on the north elevation



Photograph of one of the bay windows on the west elevation showing the materials including the rough-hewn stone blocks, Roman stone bands and lintels, purple bricks of the rusticated base and the red brick of the upper stories

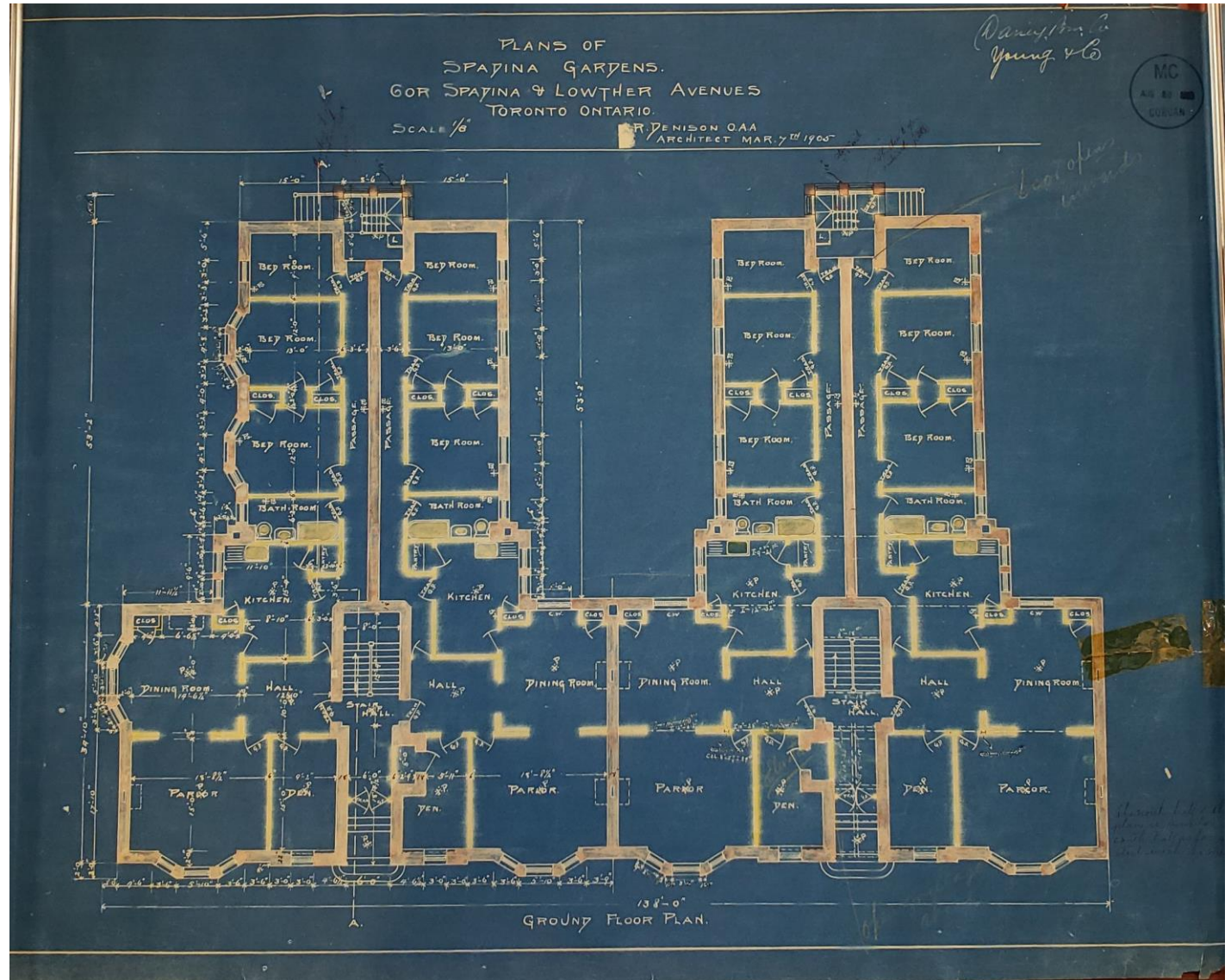


Rear courtyards facing east

PB19.3

41 Spadina Road

Ground Floor Plan of Spadina Gardens, showing the two entry lobbies with their access to two apartments. Each apartment includes a large entry hall opening to the public rooms including a 'den', 'parlour' and dining room. A corridor provided access to the more private rooms of the apartment including the kitchen, bedrooms and bathroom



PB19.3
41 Spadina Road



View of a typical apartment from the entrance hall to the den, 'parlor' and dining room showing the pocket doors open between hall and dining room and between the parlor and dining room



An example of one of the leaded glass and casement windows in the dining rooms facing the courtyards

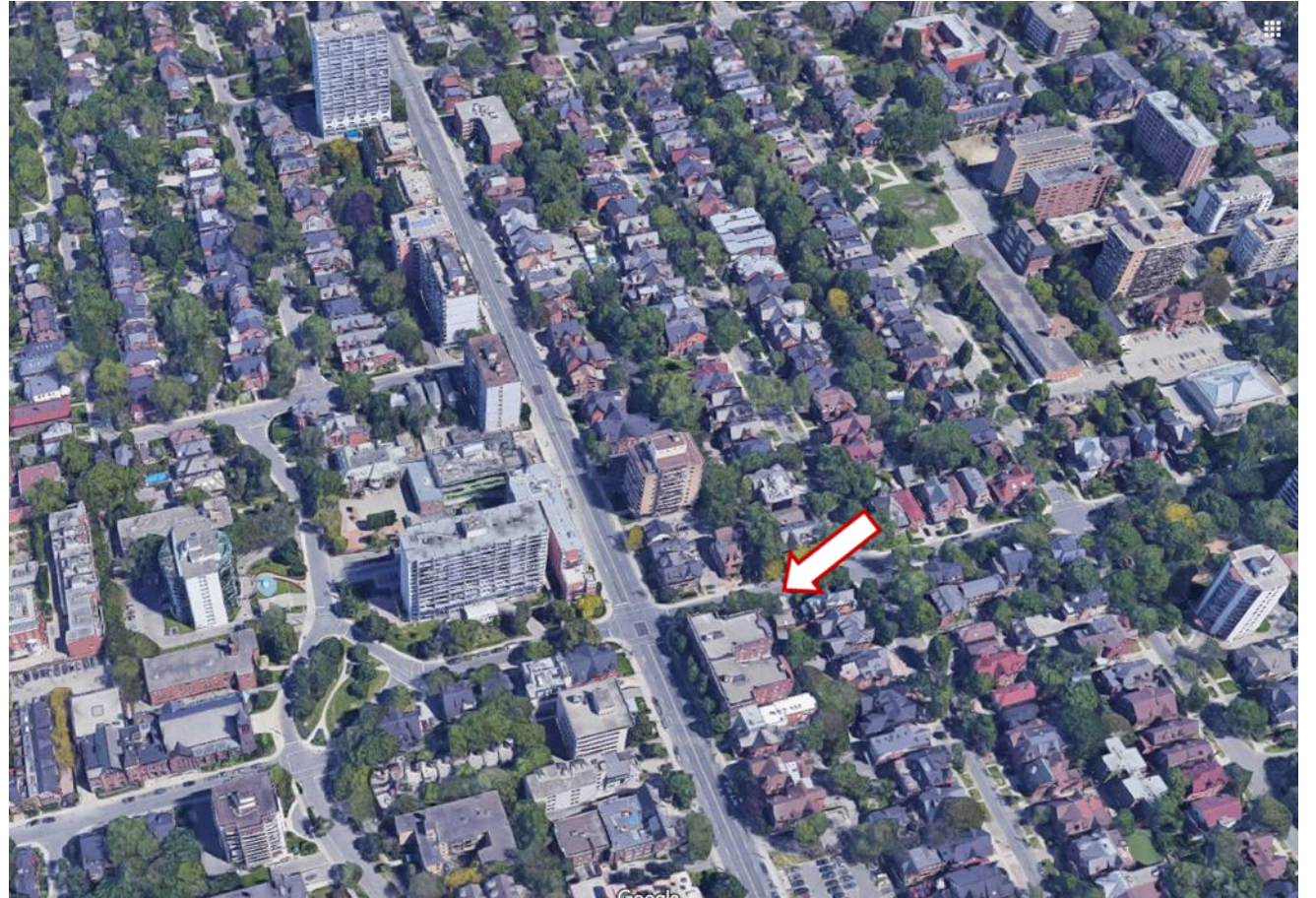


Photographs showing original door hardware (top) and one of the original fireplaces with glazed tile surround and mantel piece (bottom)

PB19.3 41 Spadina Road



1949 photograph looking south down Spadina Road from Lowther Avenue with Spadina Gardens (left) and the adjacent characteristic Annex-type houses.



Aerial view looking north past Spadina Gardens (marked with the arrow) along Spadina Road and the adjacent Annex neighbourhood with the characteristic Annex-type houses and the various later, mid-rise and high-rise towers (Google Maps)