

PB15.7.3

# 1150 EGLINTON AVE. EAST

CROSTOWN BLOCK 12



**Preservation Board Meeting**

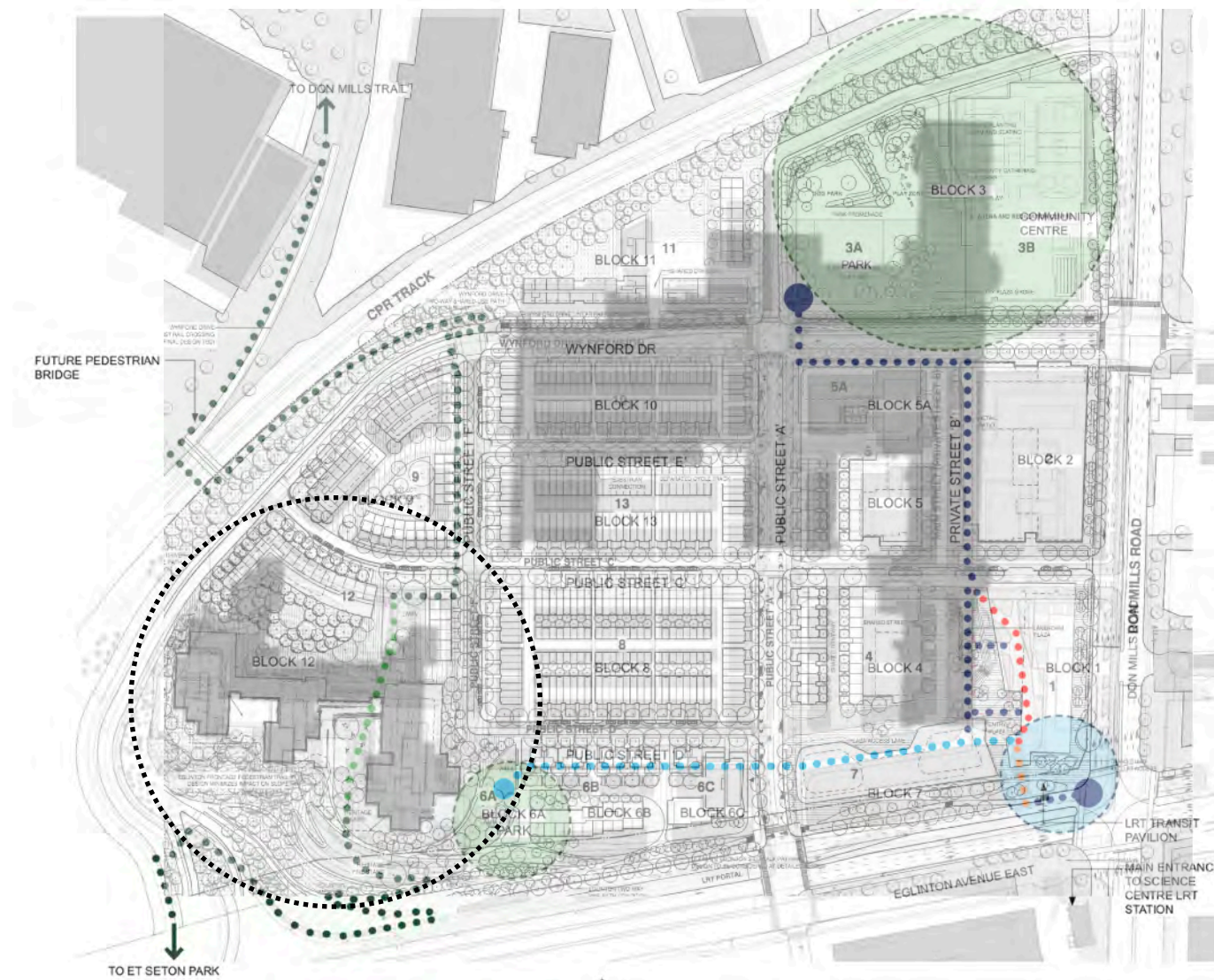
Thursday July 02 2020



# Eglinton Ave. East and Don Mills Road between 1951 - 1967



(1967)



1150 Eglinton East, and 844 Don Mills - building footprints superimposed on current plan.



# Development site





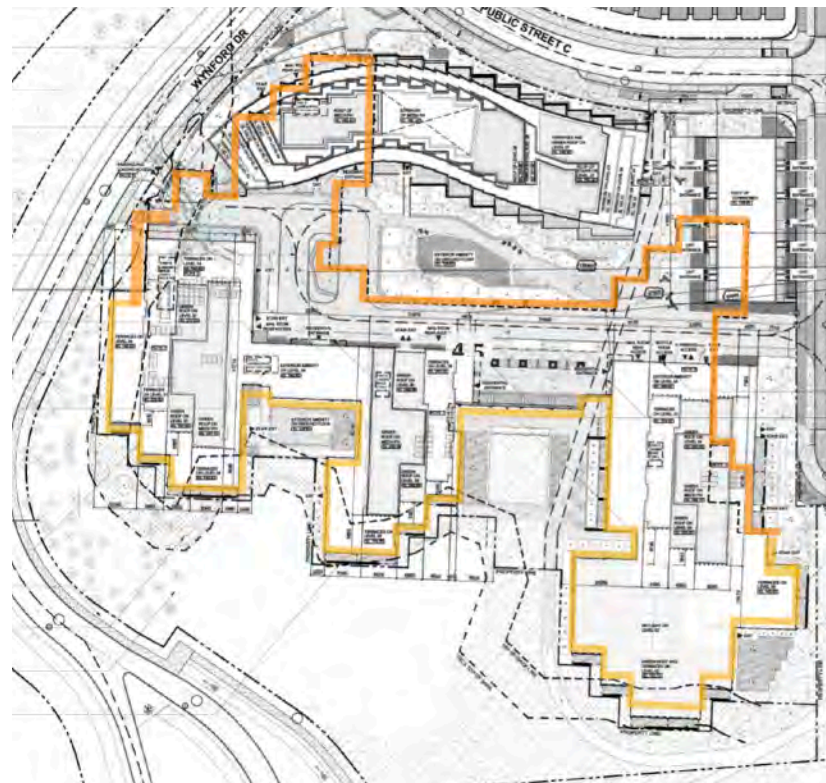
**1150 Eglinton Avenue East - IBM Canada Headquarters**



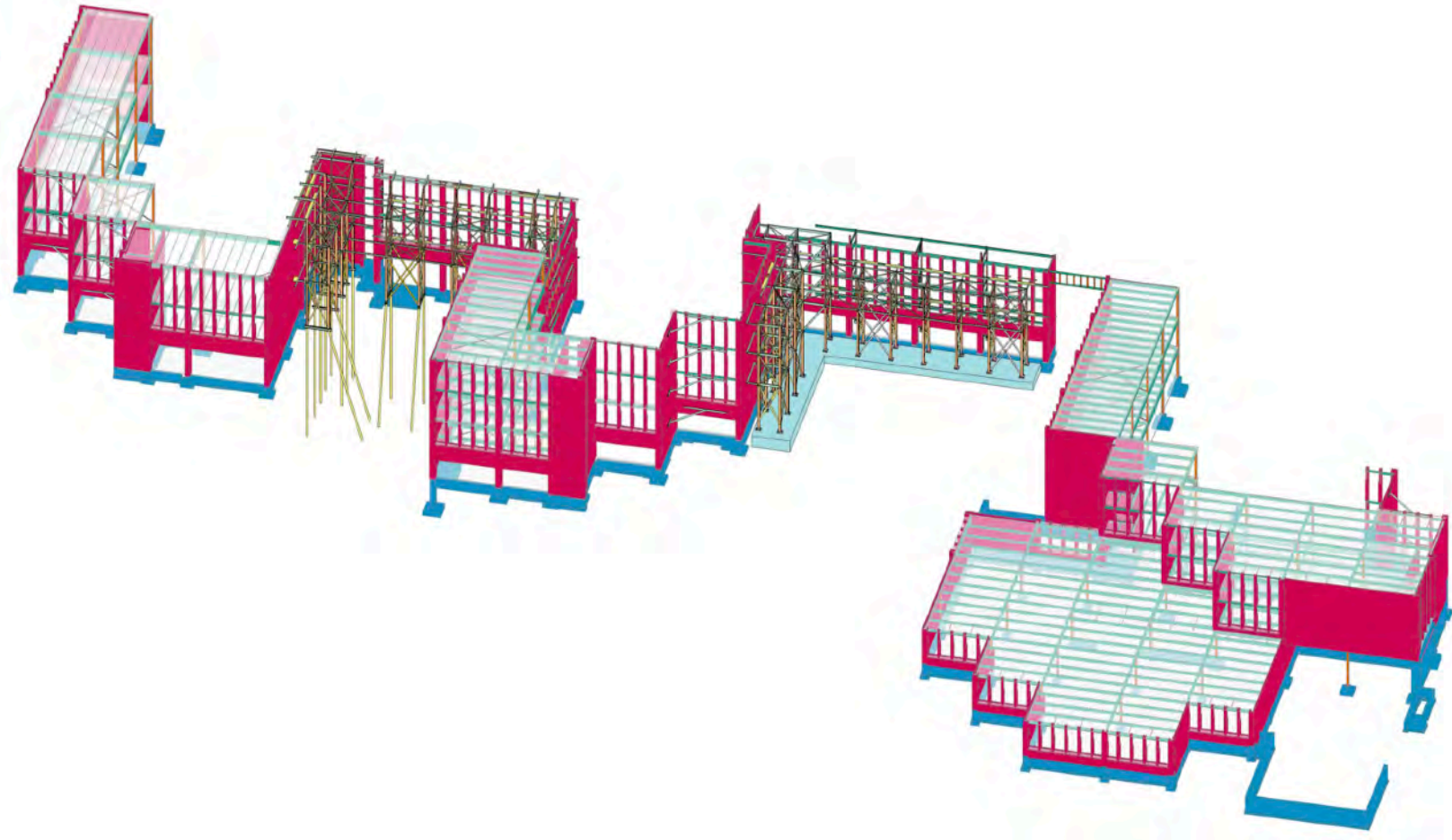
Designed by John B. Parkin Associates, Completed in 1966-67



## 1150 Eglinton Avenue East



Over 550m of fabric (43+ planes) retained along the Eglinton Avenue East frontage.



Proposed Retention Structure















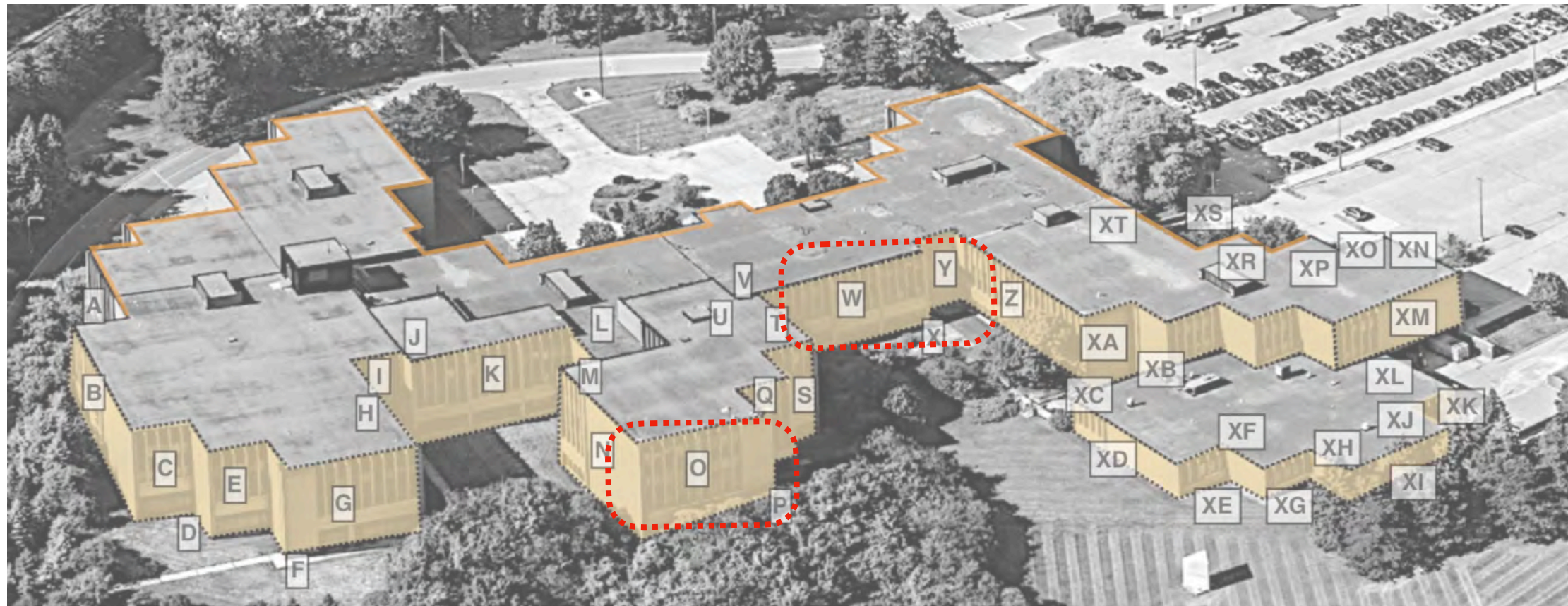








**Response to Site Plan Approval Application comments:**



Revisions to elevation









Previous elevation:



Revisions to free-standing wall



