

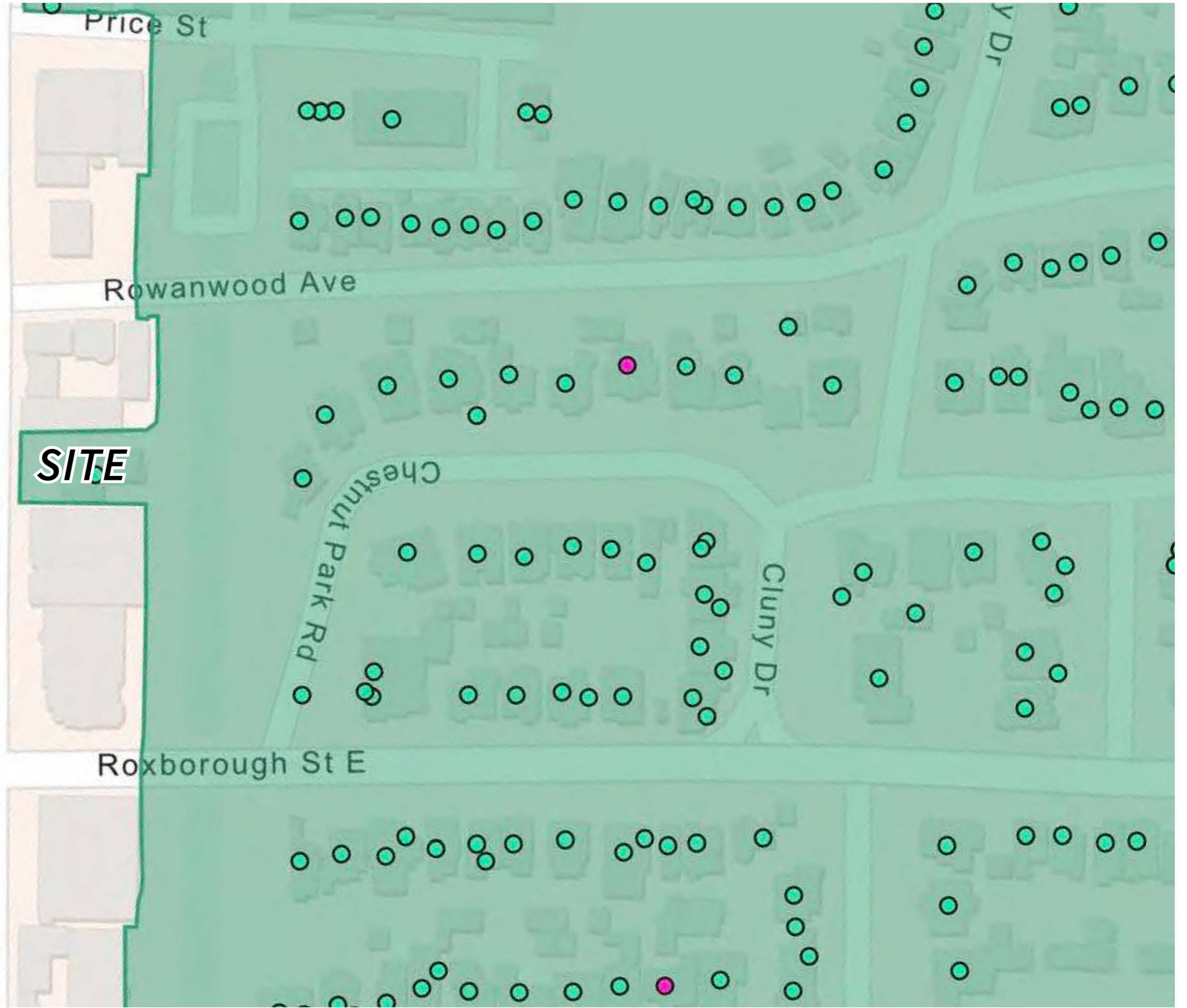
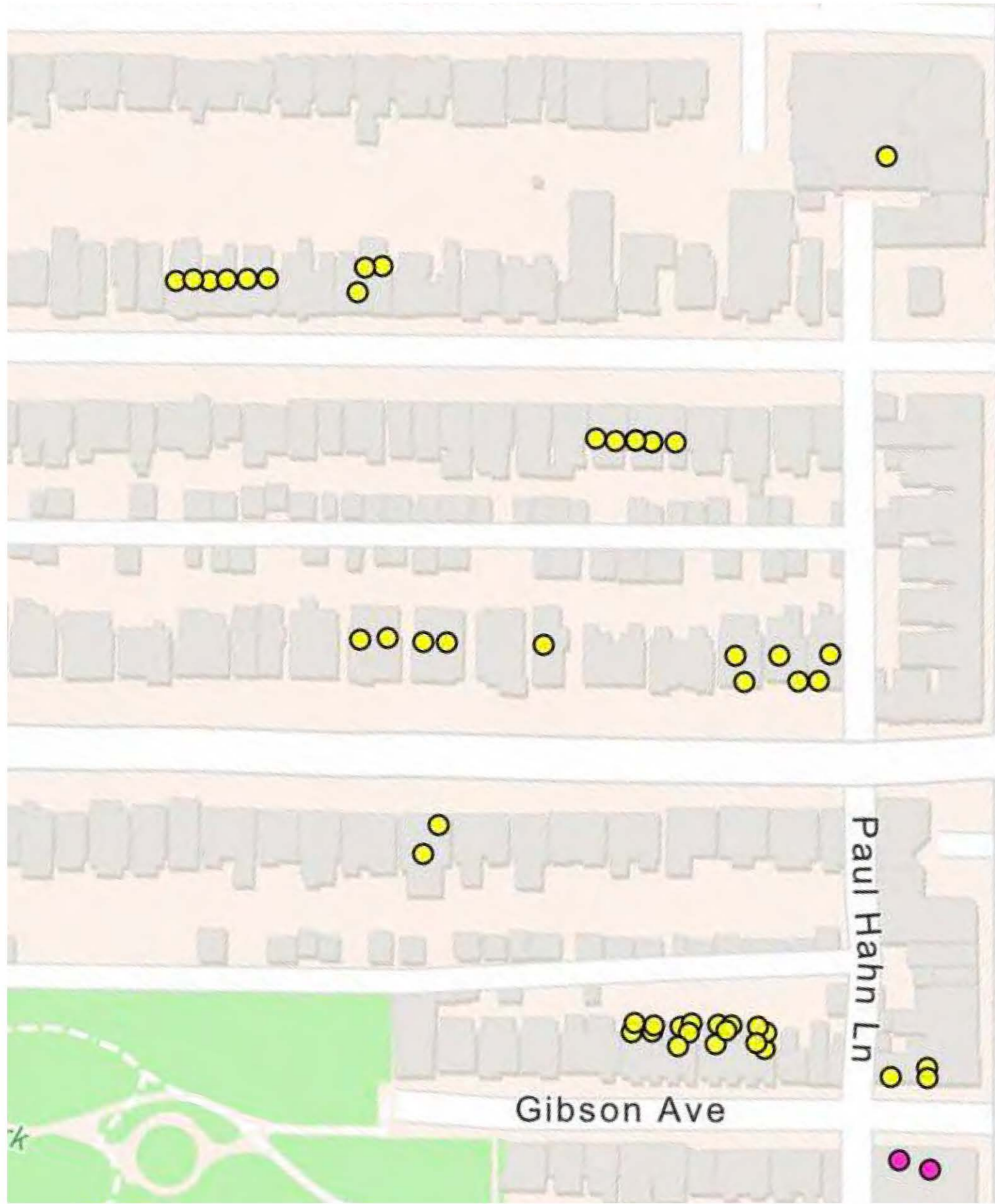
PB18.2.1

1067 YONGE STREET
Toronto Preservation Board

October 30, 2020

ERA



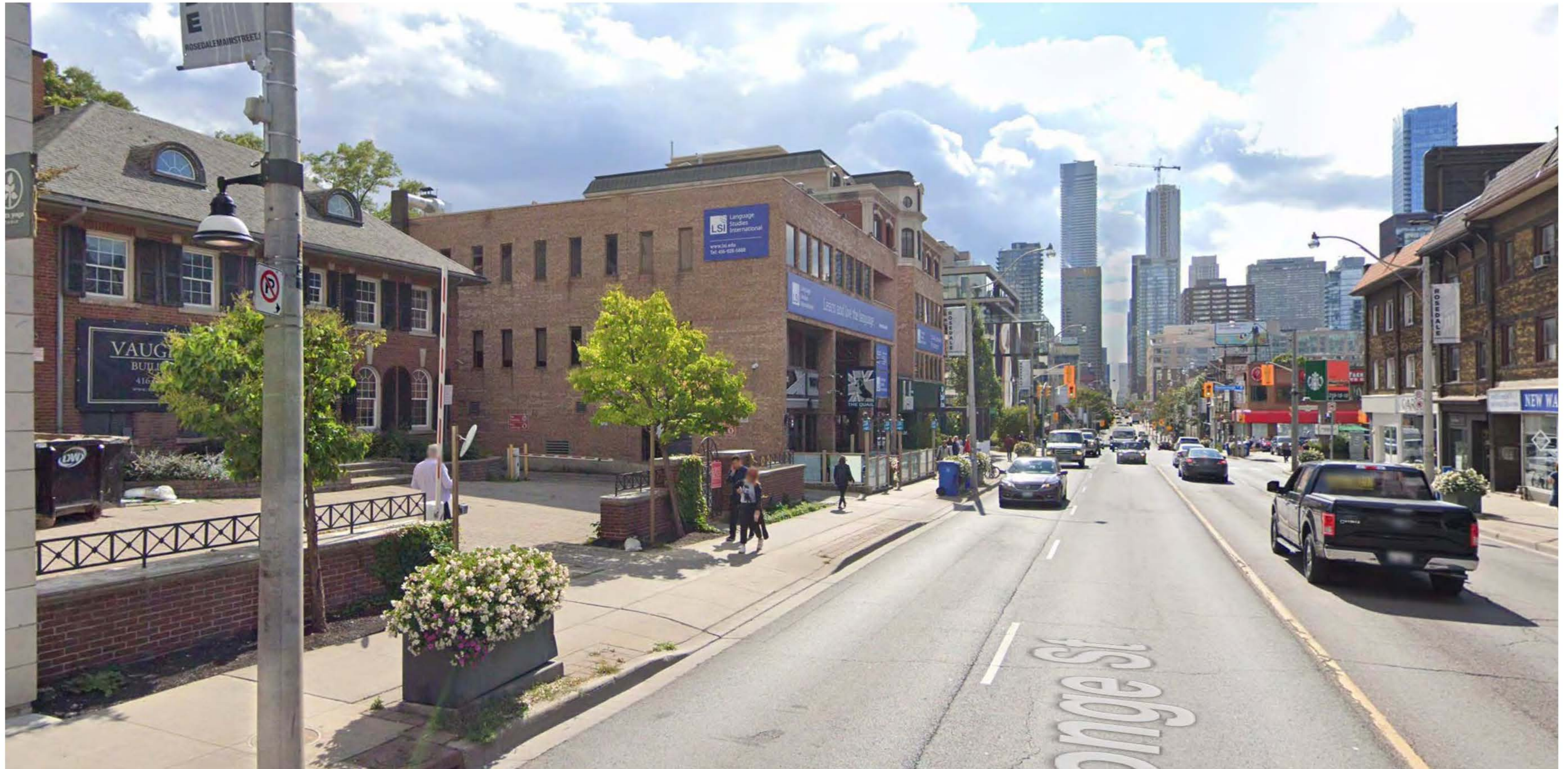


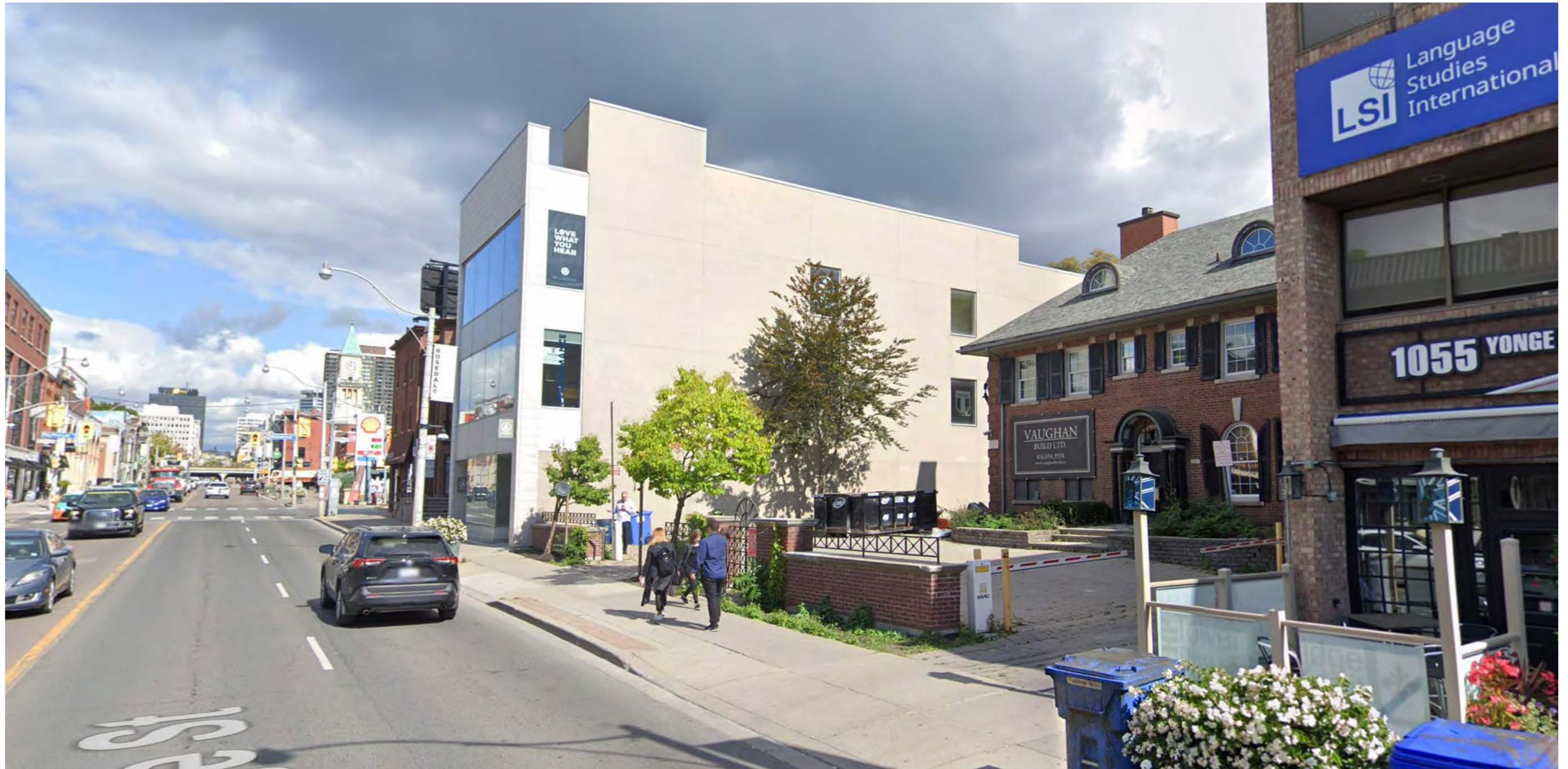


1969



1952








 Original building c. 1914.

 Rear extension c. 1951-2.

 South-east extension
(potential later addition
based on visual assess-
ment, d.o.c. unknown).

EXISTING CONDITIONS - WEST



EXISTING CONDITIONS - SOUTH



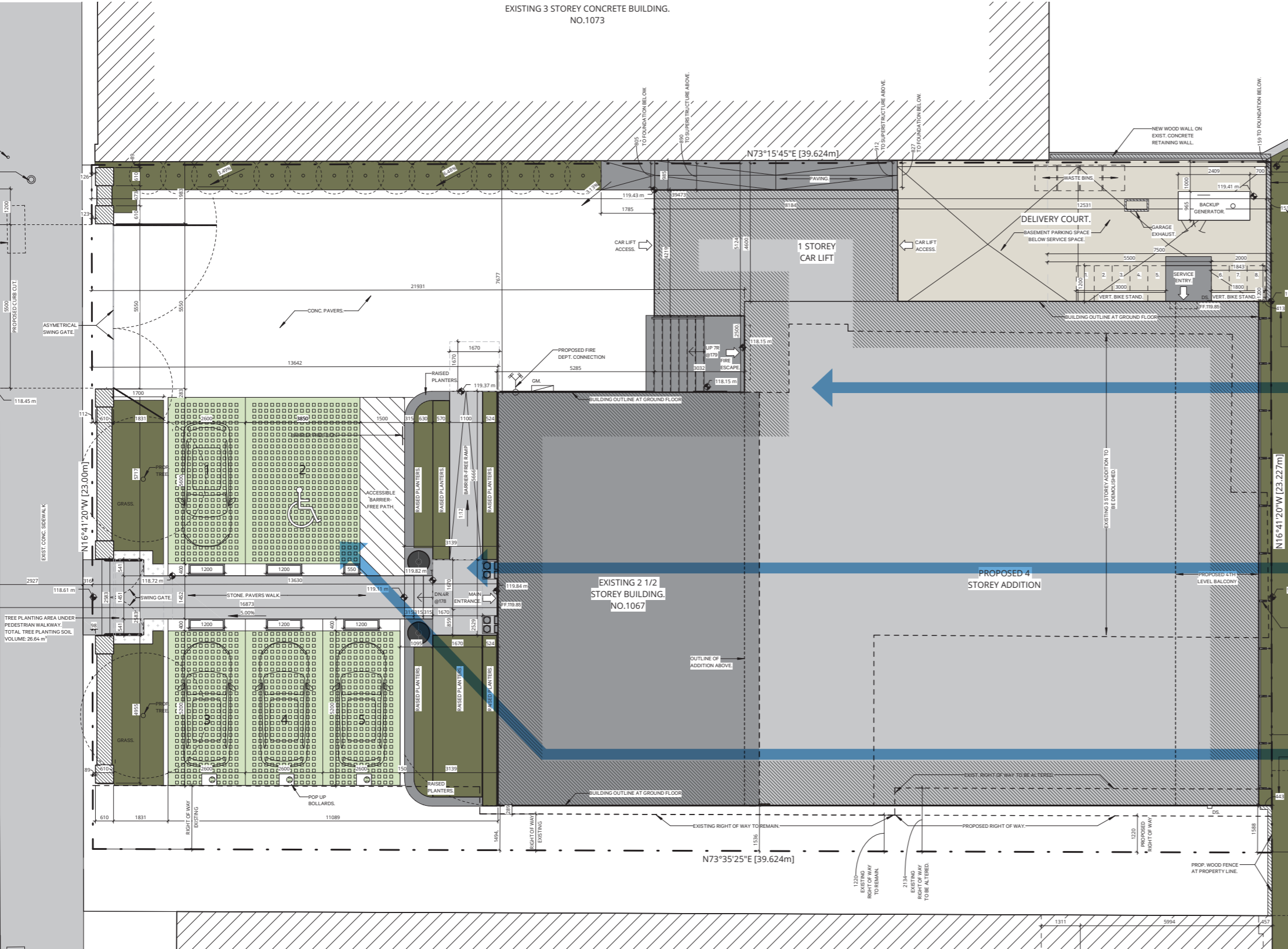
EXISTING CONDITIONS - SOUTH



EXISTING CONDITIONS - NORTH



DESIGN APPROACH

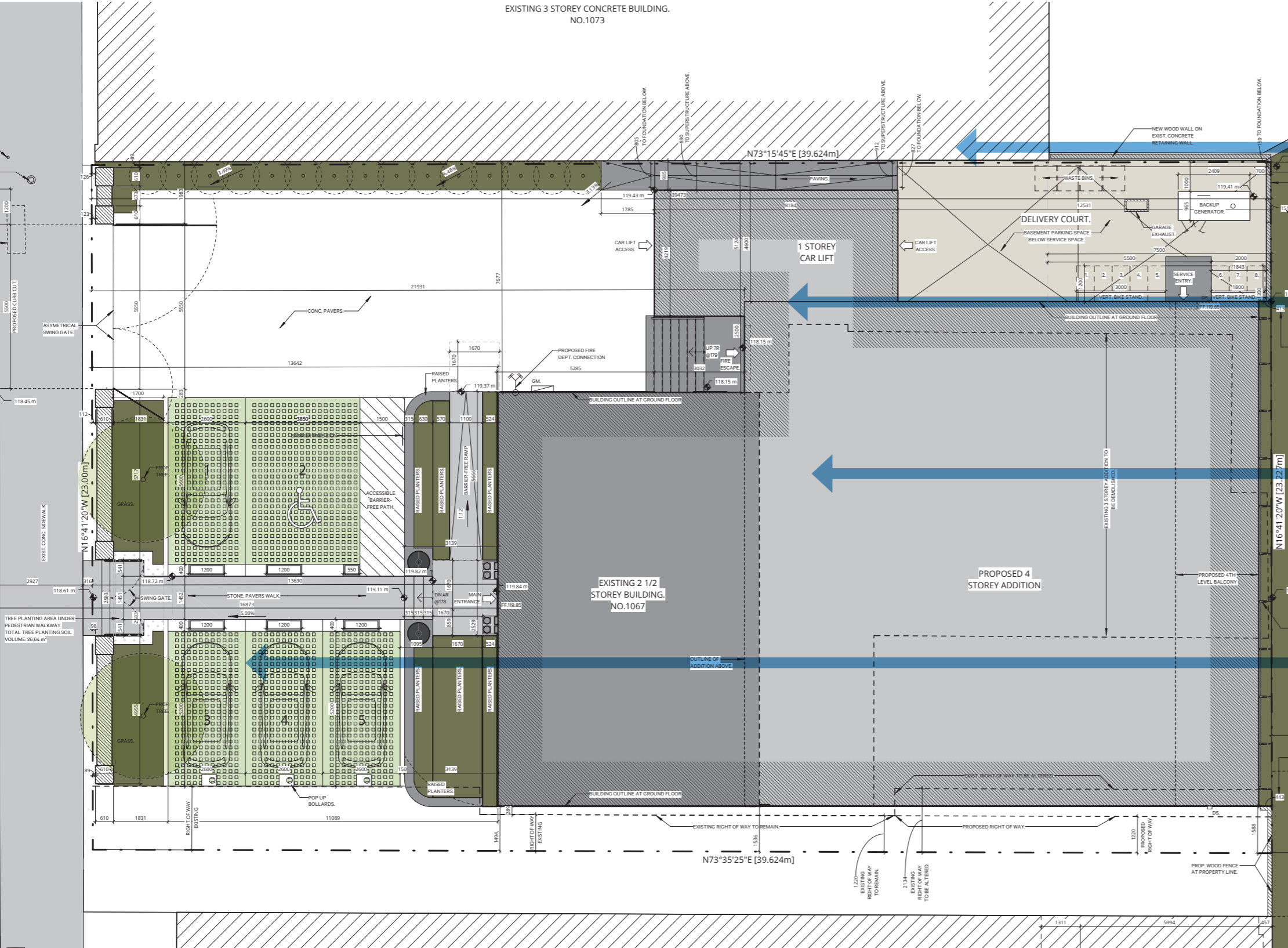


REAR ADDITION

ACCESSIBILITY

SETBACK FROM STREET

DESIGN APPROACH



CONSISTENT HEIGHT

RE-DISTRIBUTE PARKING

COMPATIBLE & DISTINGUISHABLE MATERIALS

FORE COURT ENHANCEMENT - TREES & WALL

CONSERVATION STRATEGY



- Masonry cleaning, repair and selective repointing
- Roof replacement with new slate, dormers, and profile to match historic
- Reinstatement of two chimneys
- New flashing, raingear, wood soffit, and fascia
- New windows match historic profile
- Repairs or replacement of shutters and portico