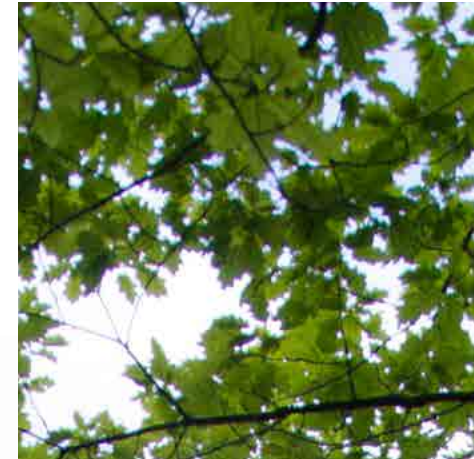
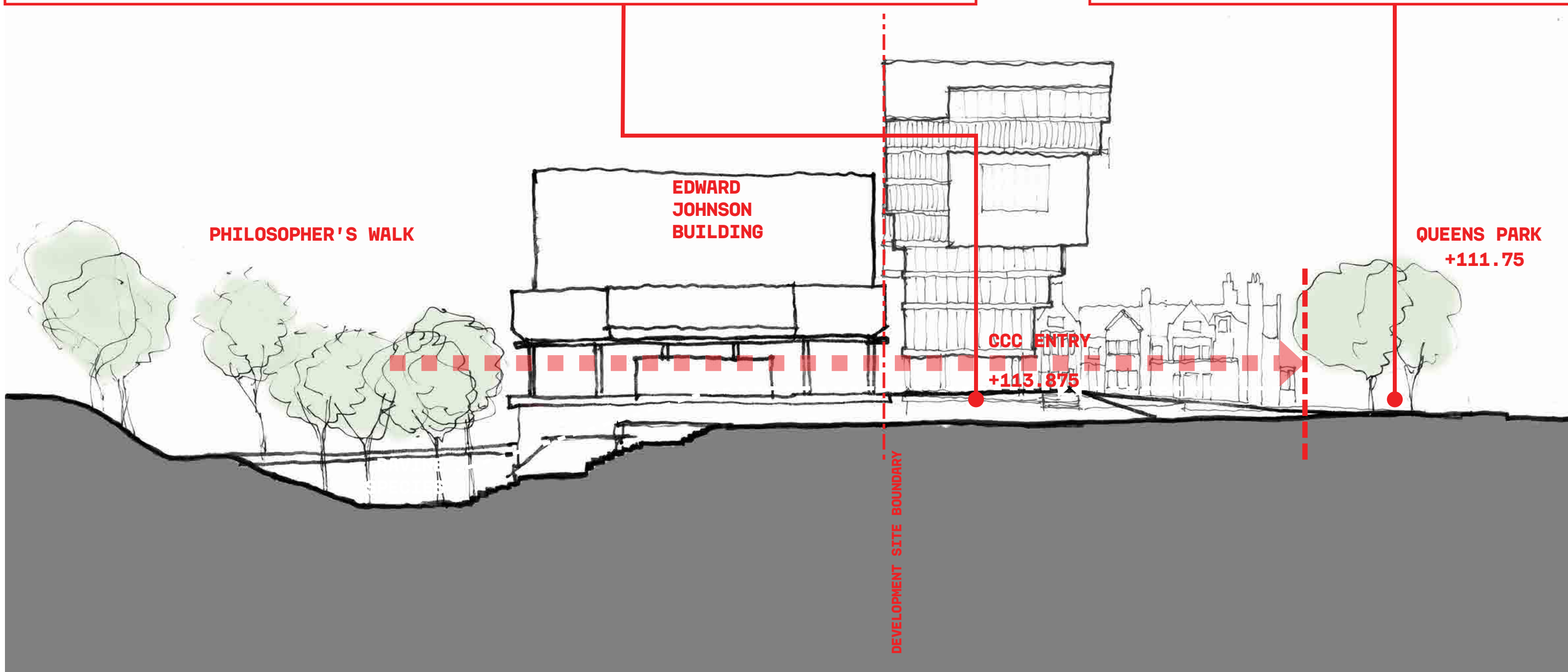


2 PLANTING CHARACTERS

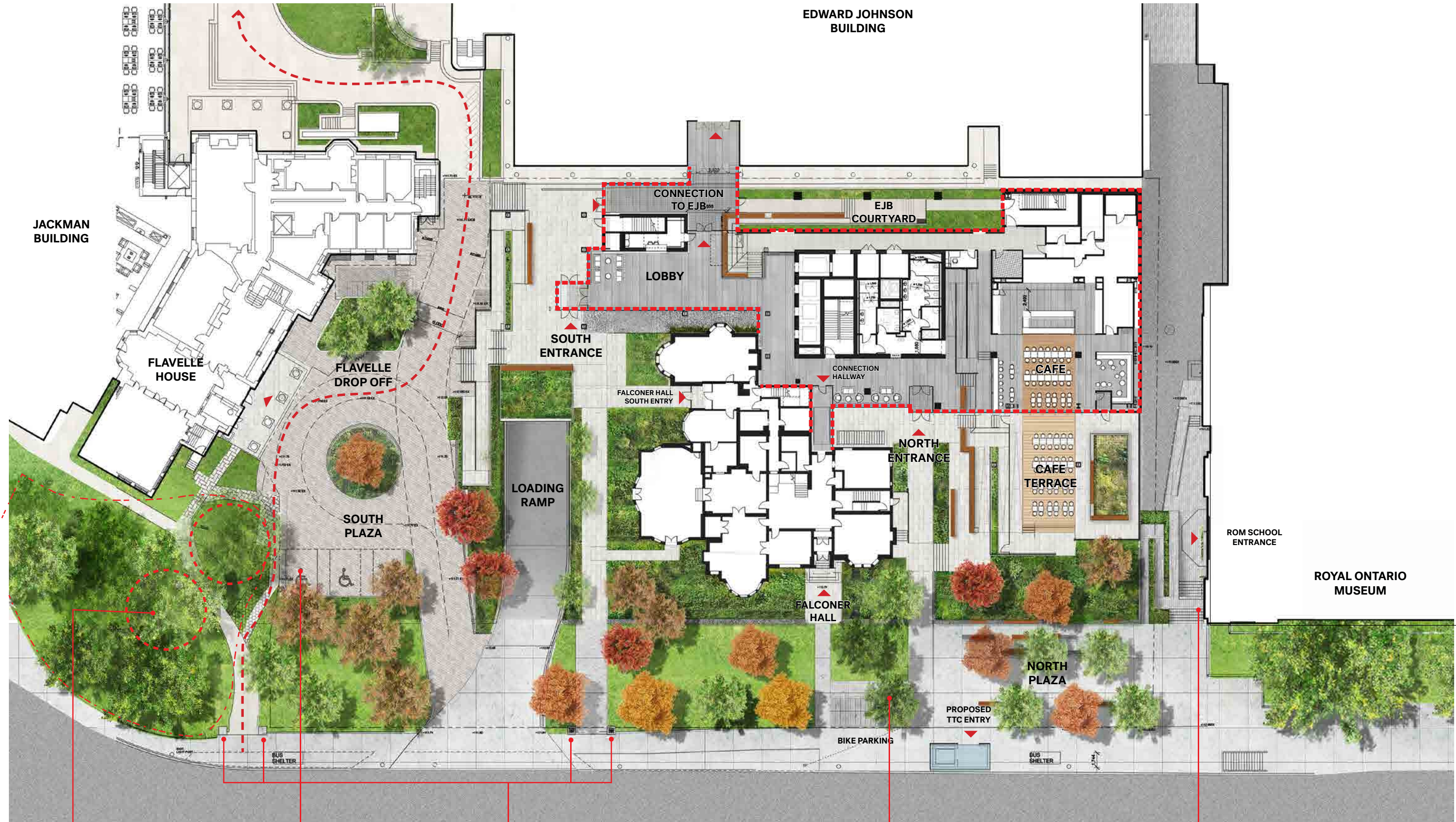


RAVINE LANDSCAPE

TREE BOULEVARD



SITE PLAN



PROTECTED MATURE TREES

REDUCED SURFACE PARKING FROM 18 (PRESENT DAY) TO 3 BARRIER FREE, WITH 2 E.V. CHARGING STATIONS

HISTORIC GATE CONNECTION

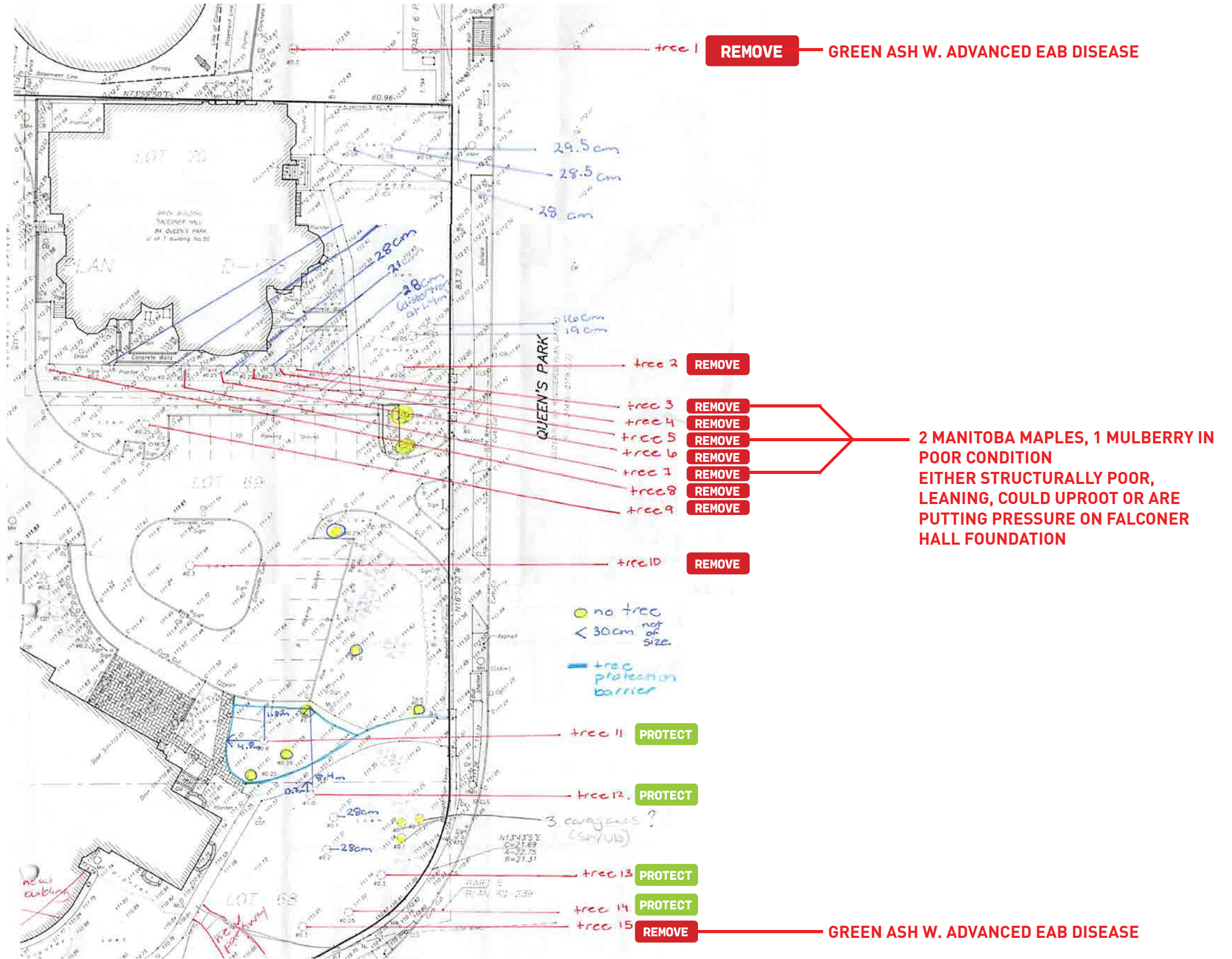
**11 TREES REMOVED, 4 TREES PROTECTED
31 TREES ADDED (NET INCREASE + 20 TREES)**

ENHANCED ENTRY TO ROM

ARBORIST REPORT | EXISTING TREES ANALYSIS

TREE COUNTS	
EXISTING TREES	
PROTECT	4
REMOVE INFESTED	2
REMOVE POOR CONDITION	3
REMOVE TO IMPROVE ACCESS TO FALCONER HALL	3
REMOVE FOR SITE LOGISTICS	3
TOTAL EXISTING TREES	15

- TREE BY-LAW NOTES**
1. WITHIN SITE BOUNDARY TREES OVER 30CM PROTECTED BY BY-LAW
 2. NO DESIGNATED HERITAGE TREES ON THE SITE (UNDER PART IV OF ONTARIO HERITAGE ACT OR TREES RECOGNIZED AS HERITAGE TREES BY THE ONTARIO HERITAGE TREE PROGRAM OF TREES ONTARIO)
 3. REPLACEMENT / NEW TREES WITH 70MM CALIPER WILL BE ADDED



TREE PLANTING SUMMARY



TREE COUNTS

EXISTING TREES

PROTECT	4
REMOVED	11
TOTAL EXISTING TREES	15

PROPOSED SITE PLAN

PROTECTED TREES	4
NEW TREES	31
TOTAL PROPOSED TREES	35*

*4 MORE TREES THAN REQUIRED BY TORONTO MUNICIPAL CODE ARTICLE III CHAPTER 813 TREES

QUEEN'S PARK REVITALIZATION STUDY, 2015 | PREPARED BY THE PLANNING PARTNERSHIP & ERA ARCHITECTS



'stars' of the existing tree canopy - to be preserved



Northern Red Oak



Horse-chestnut



Eastern Black Walnut



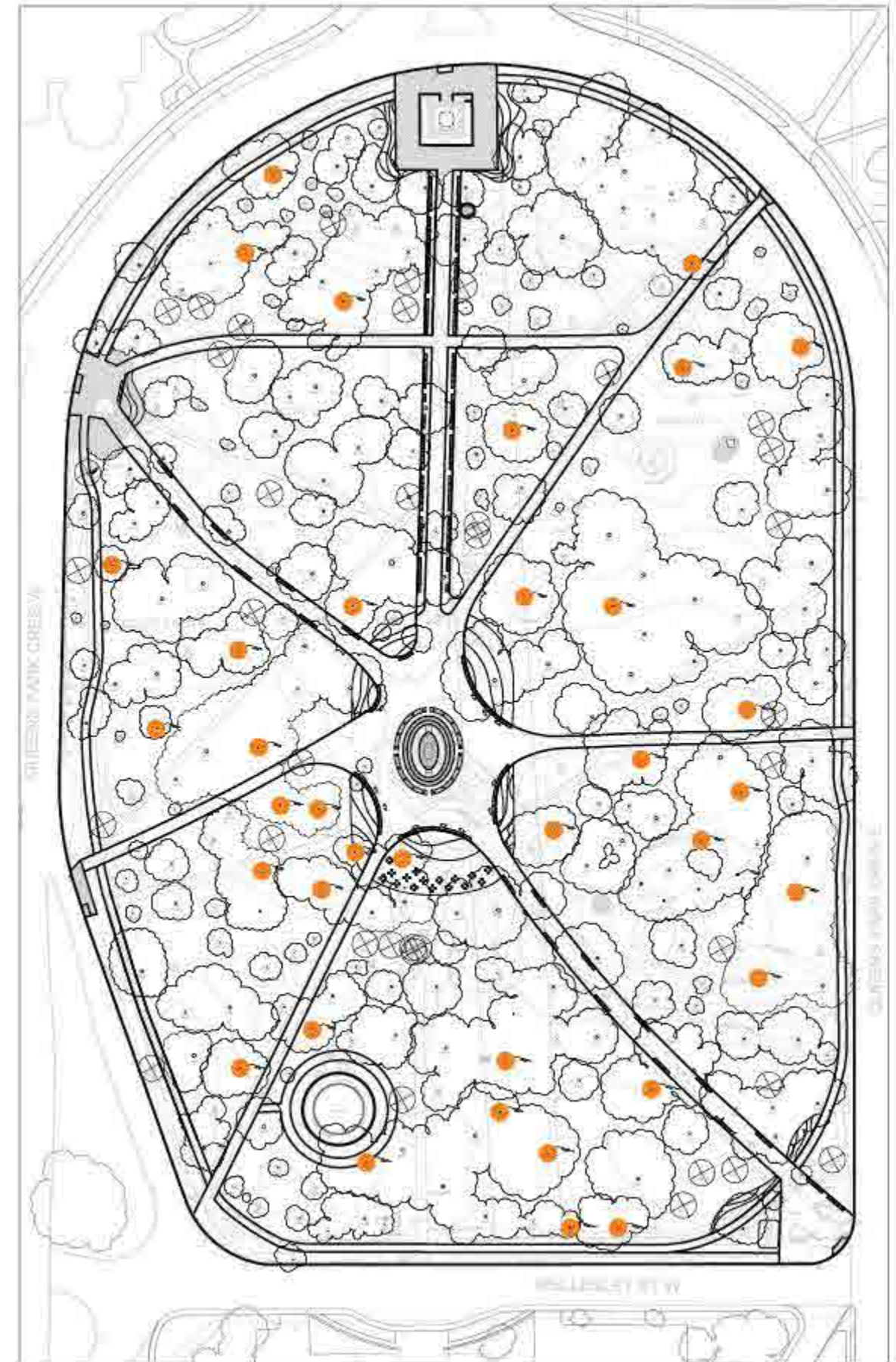
London Planetree



European Ash

KEY

● important trees to be preserved



QUEEN'S PARK REVITALIZATION STUDY, 2015 | PREPARED BY THE PLANNING PARTNERSHIP & ERA ARCHITECTS**trees****new trees to be planted**

- plant new trees and aim to plant 75% native species
- new trees could include the following species:

overstory trees

- Bur Oak, Swamp White Oak, White Oak, and English Oak (used sparingly)
- Red, Black, and Sycamore Maples
- European Beech (used sparingly)
- Eastern White Pine (Provincial tree)

understory (trees + large shrubs)

- Yellowwood
- Eastern Redbud
- Pagoda and Eastern Flowering Dogwood
- Vernal Witchhazel



TREE PLAN | TREE SELECTION BASED ON UNDERSTANDING OF QUEEN'S PARK CONTEXT AND APPROACH TO TREES

A. Kentucky Coffee Tree



B. Red oak



C. White Oak



D. Freeman Maple



E. Sweet Gum



F. Black Gum



G. London Plane



H. Ginkgo



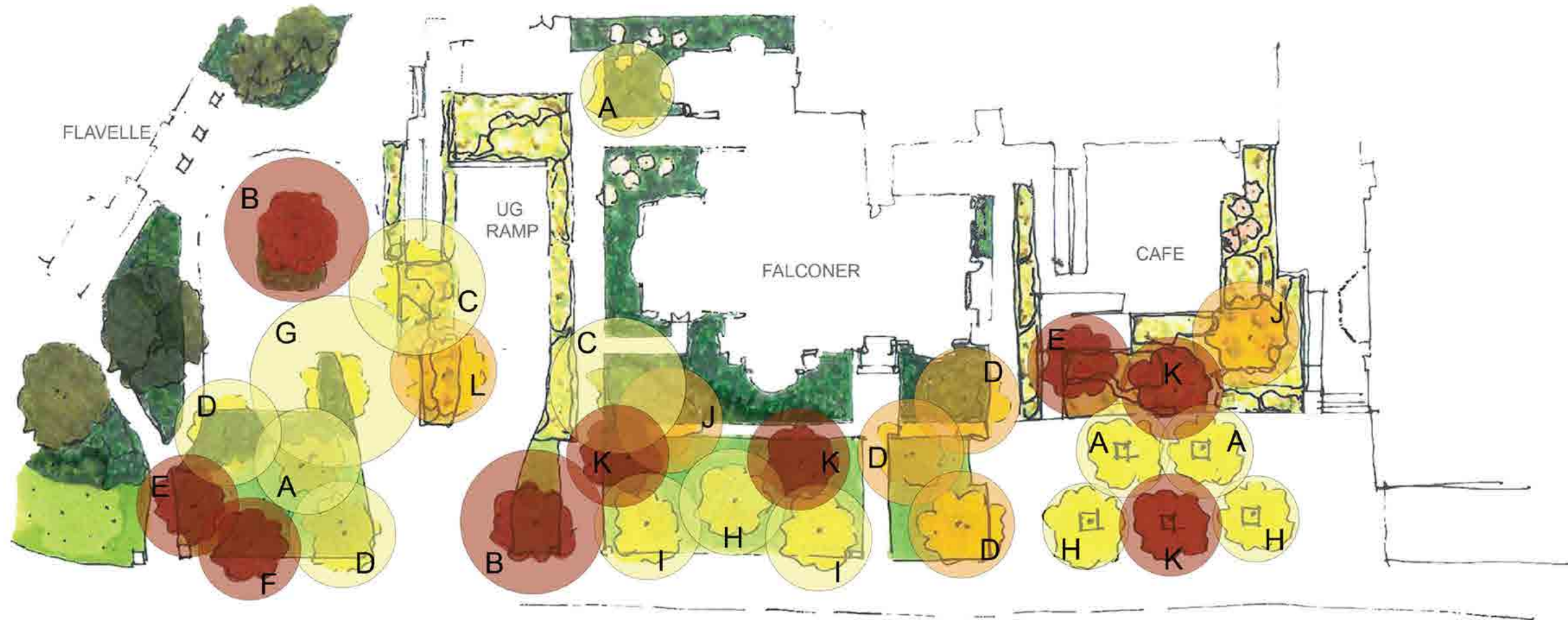
I. Bur Oak



J. Sugar Maple



K. Autumn Blaze Maple



SOUTH PLAZA AERIAL



SOUTH ENTRANCE APPROACH | HERITAGE GATES CONSERVED IN PLACE TO FORM NEW ENTRANCE



SOUTH PLAZA - VIEW FROM FLAVELLE HOUSE



NORTH PLAZA - AERIAL VIEW



TBD, TTC IS
DESIGNING
ELEVATOR
BUILDING

NORTH ENTRANCE APPROACH



NORTH PLAZA



PLANETARIUM COMMEMORATION & INTERPRETATION



ROM ENTRY RECONFIGURATION AND MID-BLOCK CONNECTION IMPROVEMENTS



4. INTERIOR FEATURES

SECTION THROUGH STAIR



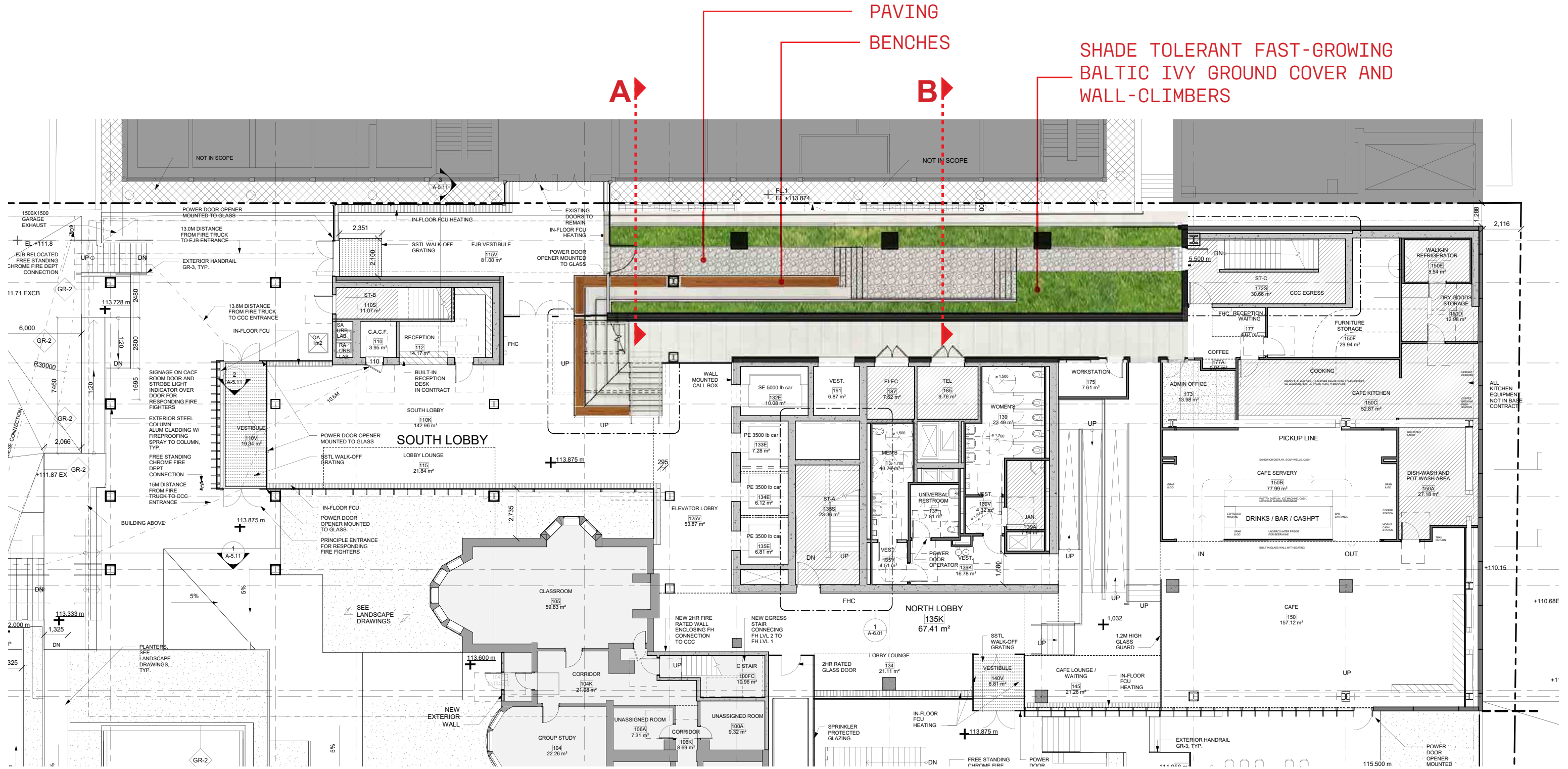
RECITAL HALL LOBBY



RECITAL HALL INTERIOR



COURTYARD AT ADJACENT MUSIC FACULTY (EDWARD JOHNSON) BUILDING





VIEW OF EDWARD JOHNSON BUILDING COURTYARD



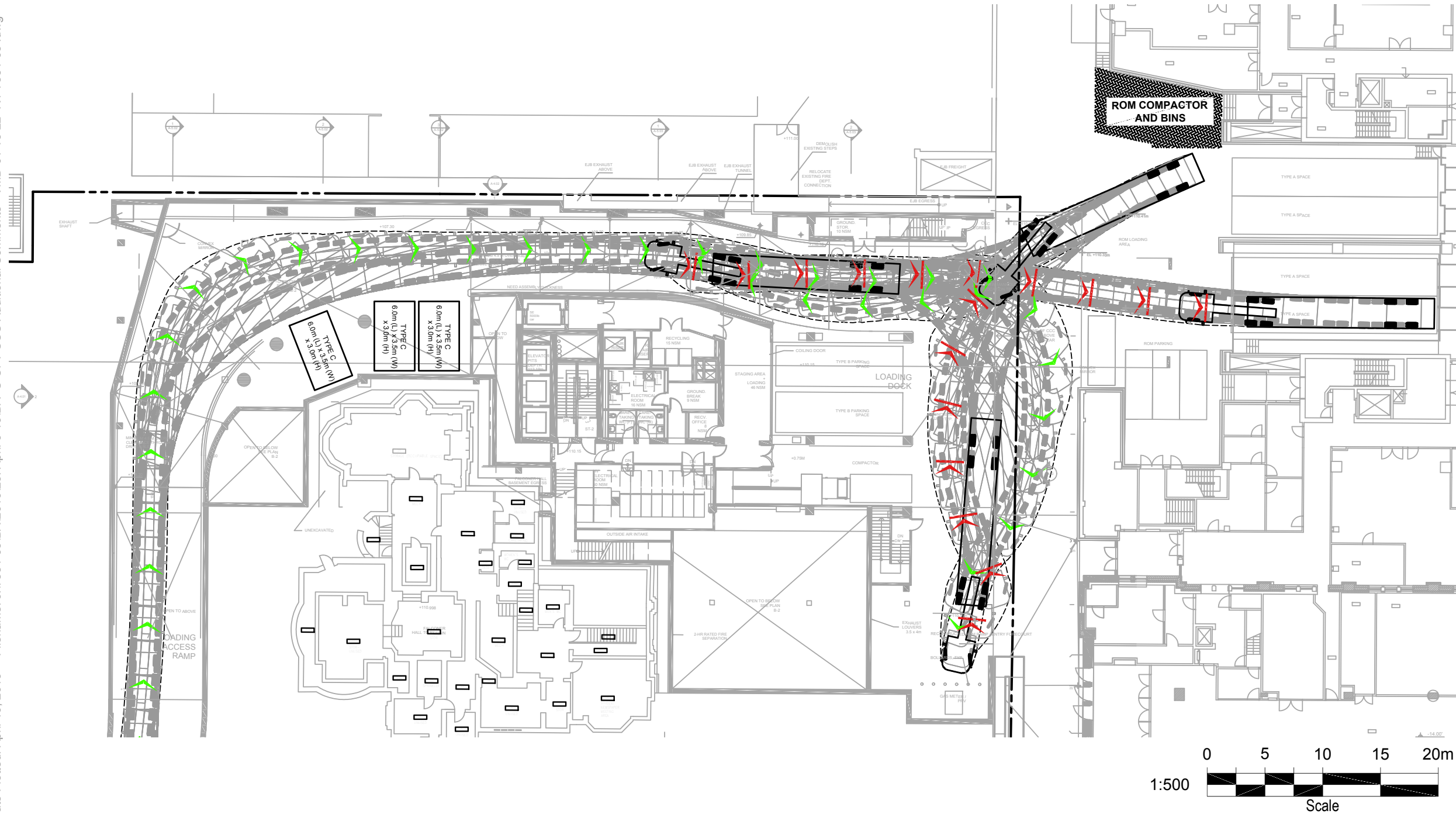
5. SITE ACCESS / LOGISTICS

MAC 53 FT TRACTOR TRAILER MOVEMENTS

 FORWARD MOVEMENT
 REVERSE MOVEMENT



Date Plotted: April 10, 2019 File name: J:\7554-03\BA\2019\26_April 9-19\BA-U UT 1 CCC Additional Comments - VMD-U1 10 22 -K1-7554-03 .dwg



U OF T CCC
 Vehicle Movement Diagram - Type A Space #1 - Inbound with Correction -
 53 ft trailer

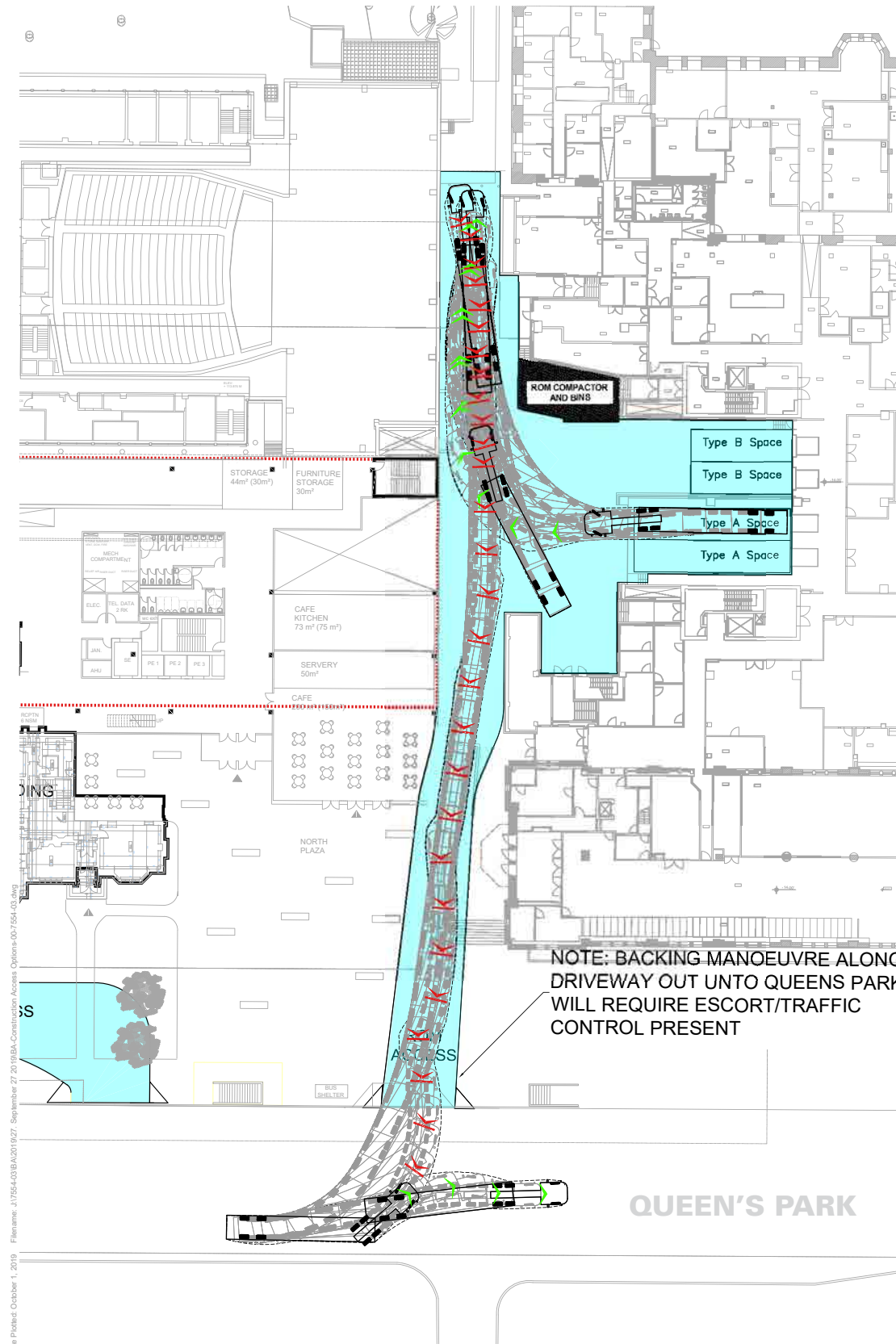
Project: U OF T CCC
 Project No. 7554-03
 Date: August 16, 2018
 Revised: April 10th, 2019

Drawing No. **VMD-15**

DURING CONSTRUCTION

1. ROM VEHICLE TURNAROUND DURING TEMPORARY ACCESS

Material staging area in front of Falconer will incur select tree removal, to be replaced in current landscape design



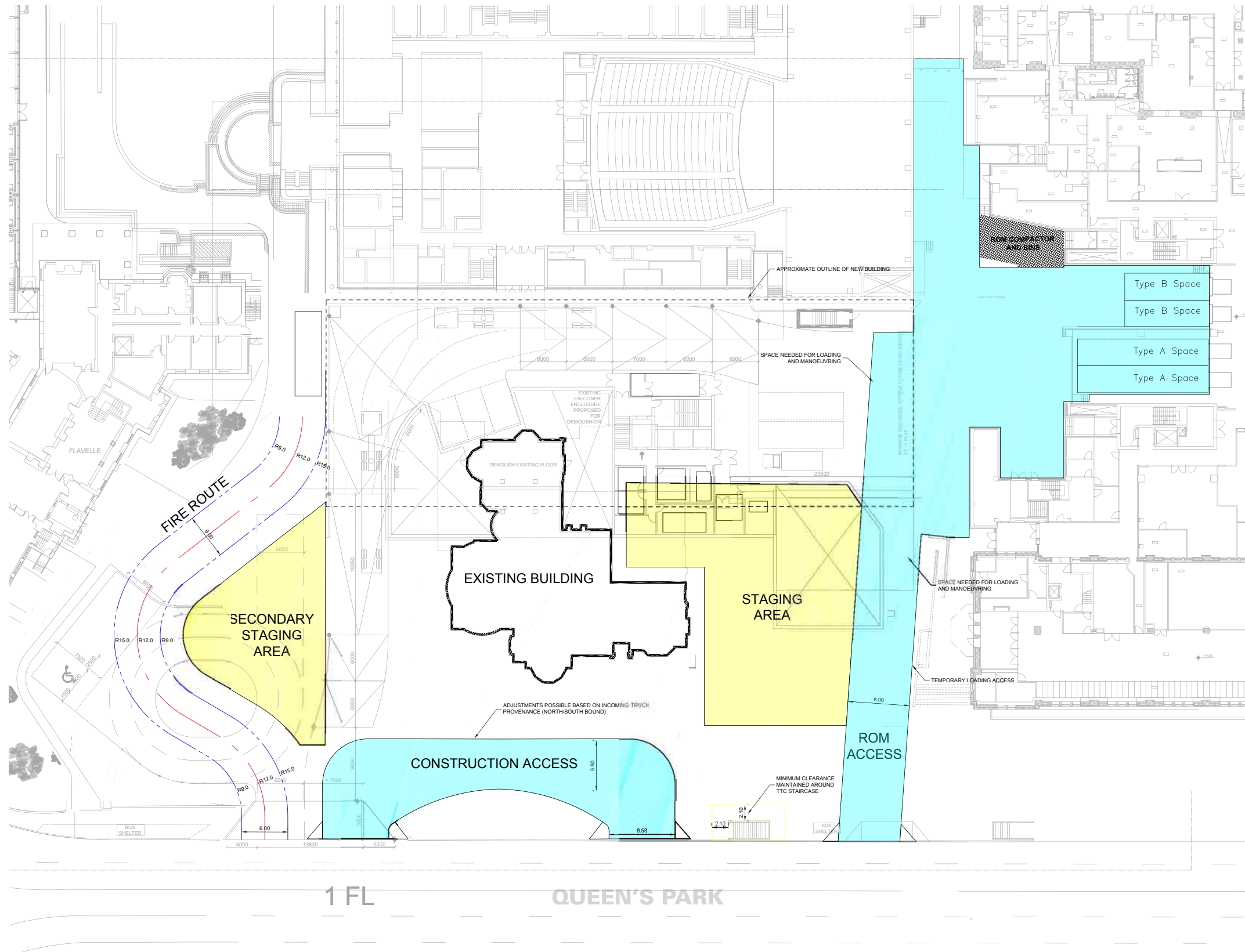
Date Plotted: October 1, 2019 File Name: J:\1954-03\BA\2019\27 - September 27, 2019\BA-Construction Access Options-07-7554-03.dwg

	U of T CCC VMD - 2012 53 ft Mack Tractor Trailer Outbound	Project: U of T CCC Project No. 7554-03 Date: October 1, 2019 Revised: --	Scale: 0 2 4 6 8 10 20m 1:400
		Drawing No. VMD-05	



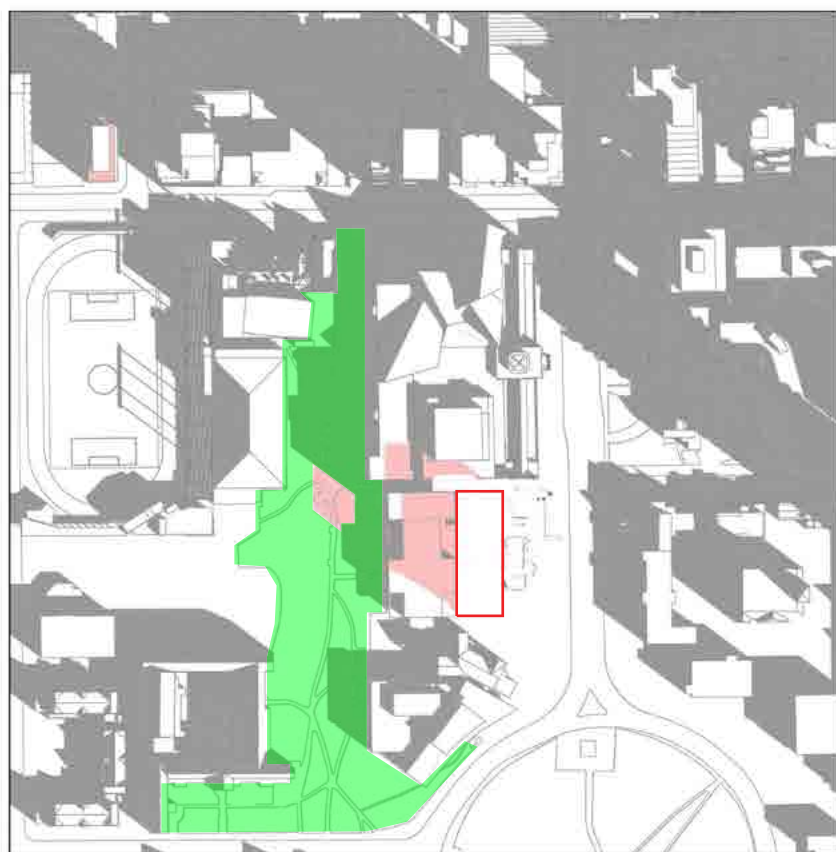
DURING CONSTRUCTION

**2.
CONSTRUCTION VEHICLE ACCESS
AND MATERIAL STAGING AREAS**



6. SHADOW STUDIES

SUN SHADOW STUDIES - VERNAL / AUTUMNAL EQUINOX



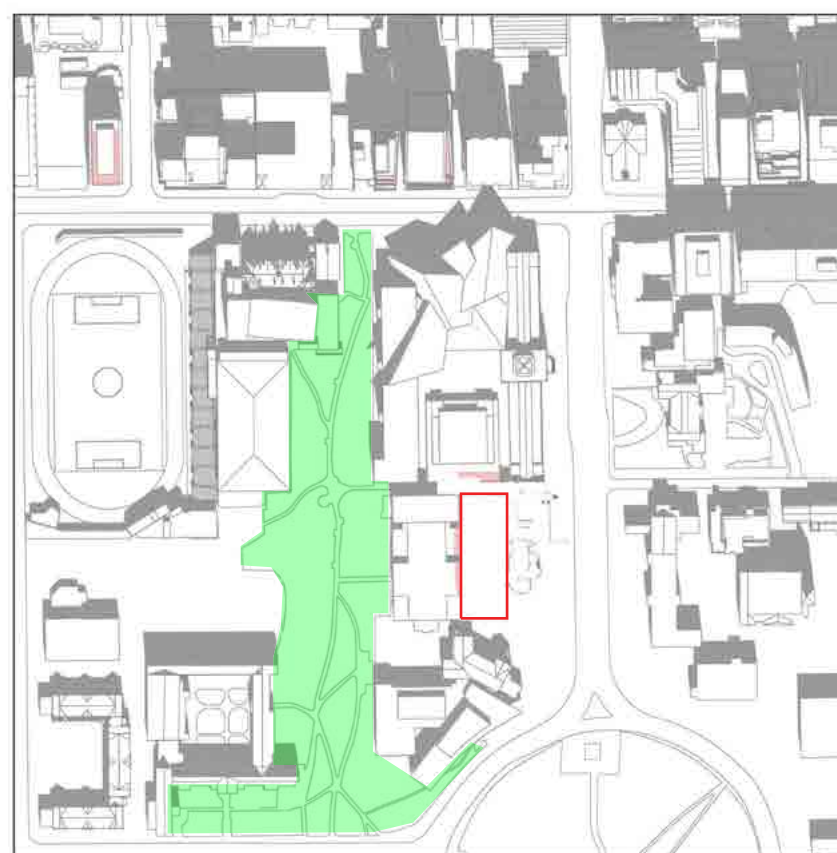
MAR/SEP. 21 9:18 AM



MAR/SEP. 21 10:18 AM



MAR/SEP. 21 11:18 AM



MAR/SEP. 21 12:18 PM

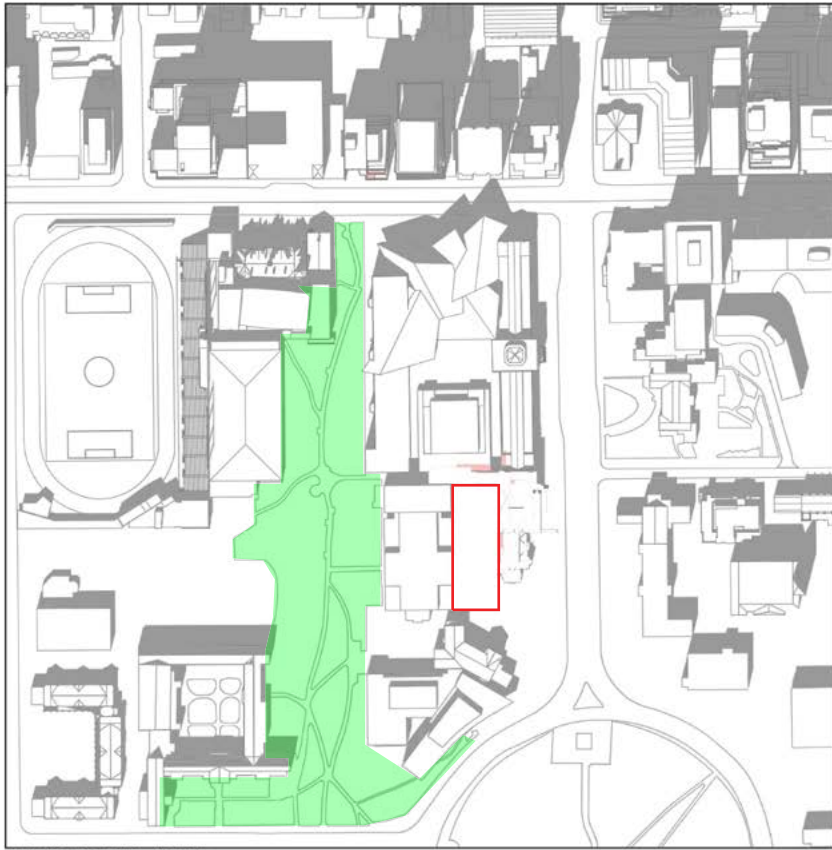
Note

Net new shadow only occurs at 9:18am on the vernal and autumnal equinoxes, and expires within the hour

This in compliance with the requirement to not add shadow to Tier 1 parks between 10am and 4pm. Proposal meets OPA 9.17 (*"Development will seek to adequately limit shadows on sidewalks, parks, open spaces, natural areas, and institutional open spaces as necessary to preserve their utility."*)

Note that Philosopher's Walk is not a designated Tier 1 park.

SUN SHADOW STUDIES - VERNAL / AUTUMNAL EQUINOX



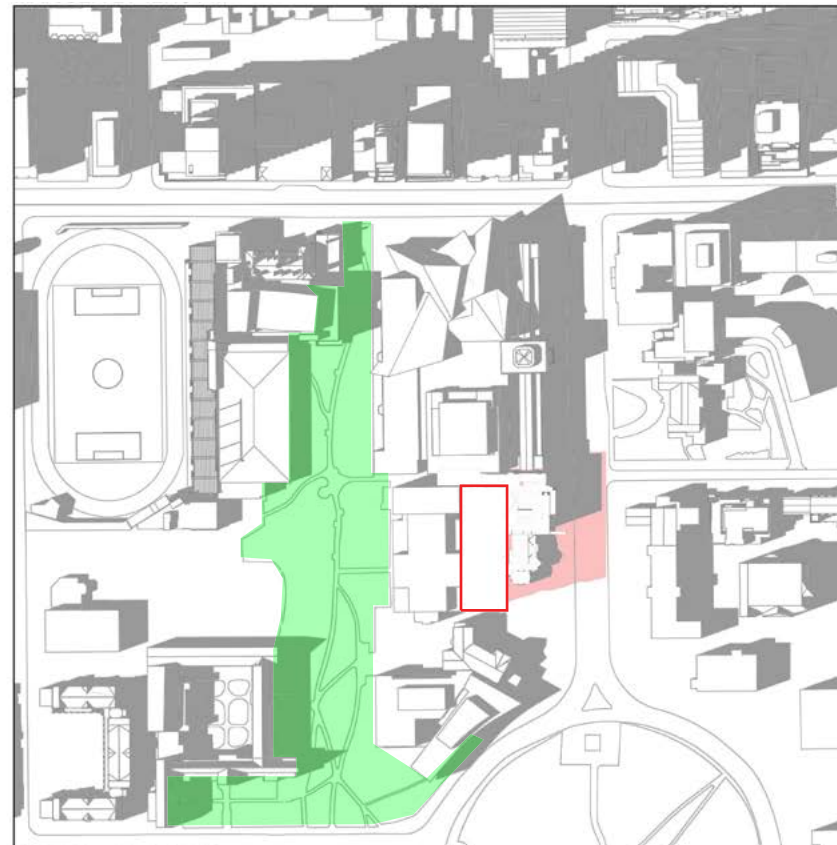
MAR/SEP. 21 1:18 PM



MAR/SEP. 21 2:18 PM

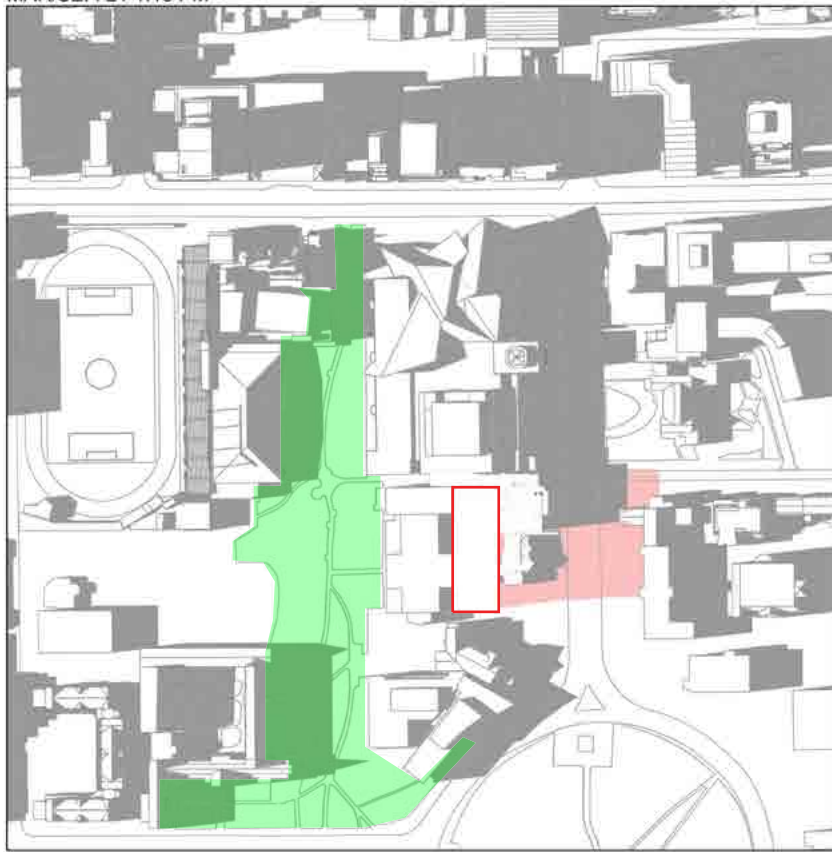


MAR/SEP. 21 3:18 PM

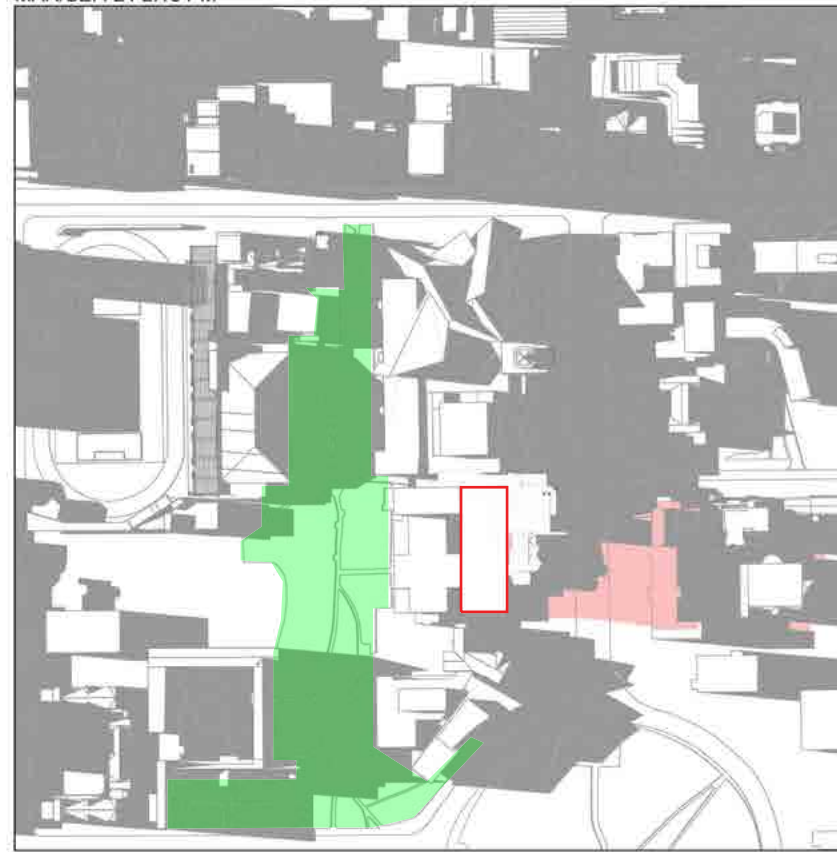


MAR/SEP. 21 4:18 PM

SUN SHADOW STUDIES - VERNAL / AUTUMNAL EQUINOX



MAR/SEP. 21 5:18 PM



MAR/SEP. 21 6:18 PM

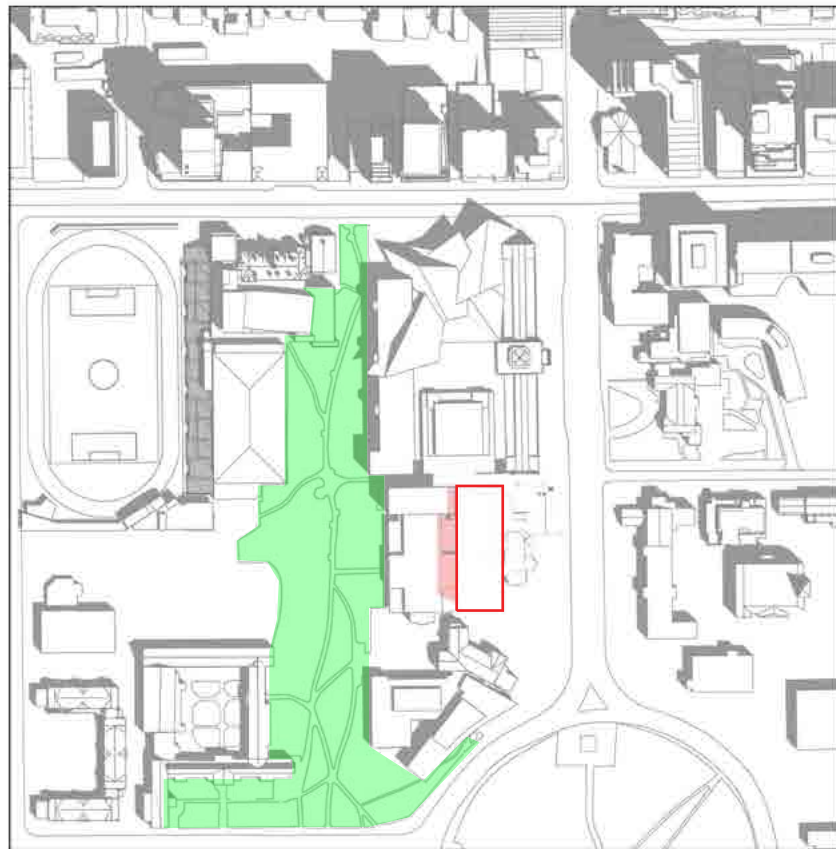
SUN SHADOW STUDIES - SUMMER SOLSTICE



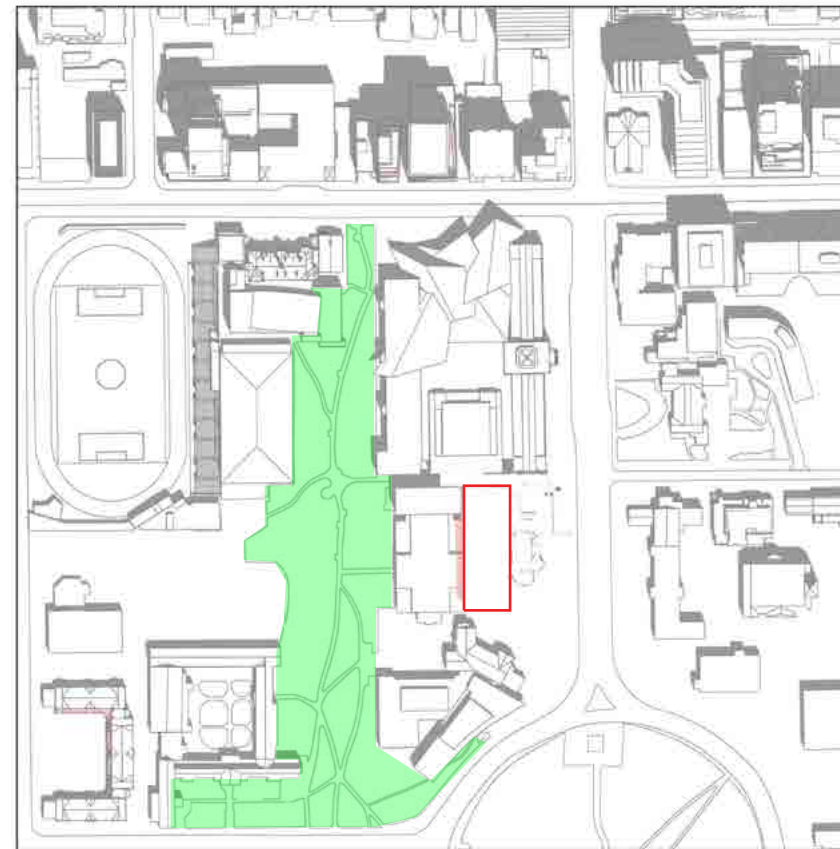
JUN. 21 9:18 AM



JUN. 21 10:18 AM

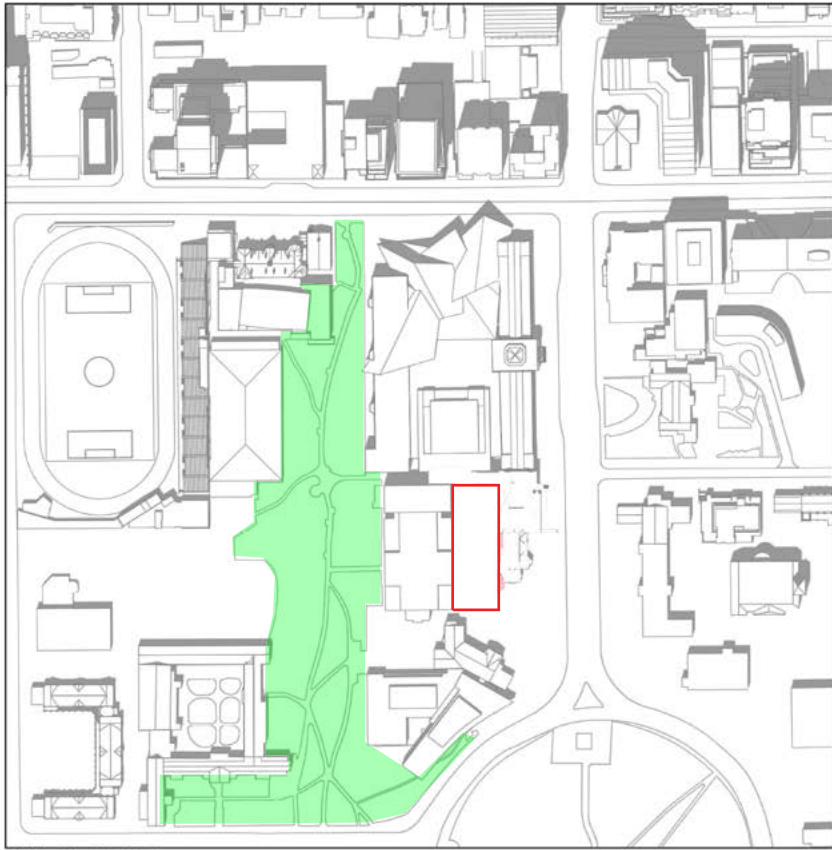


JUN. 21 11:18 AM



JUN. 21 12:18 PM

SUN SHADOW STUDIES - SUMMER SOLSTICE



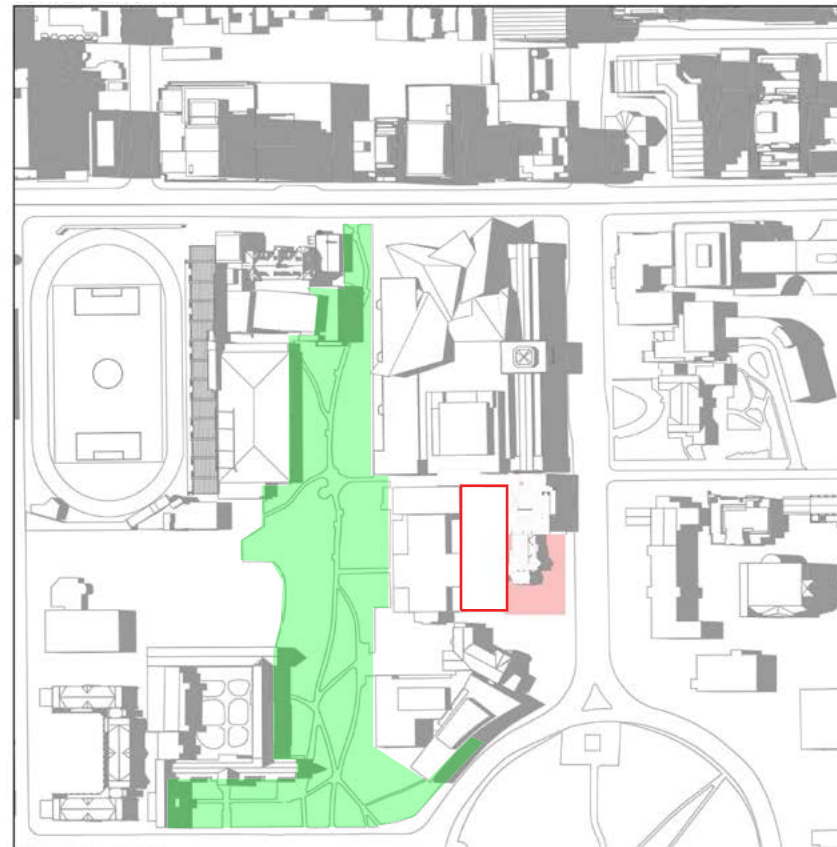
JUN. 21 1:18 PM



JUN. 21 2:18 PM

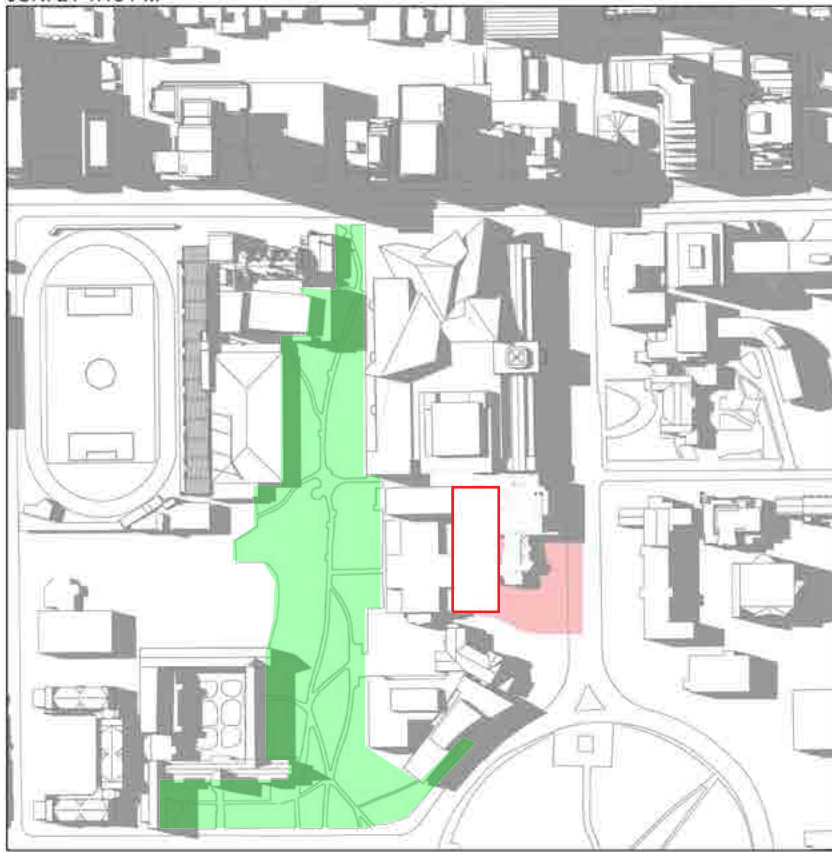


JUN. 21 3:18 PM

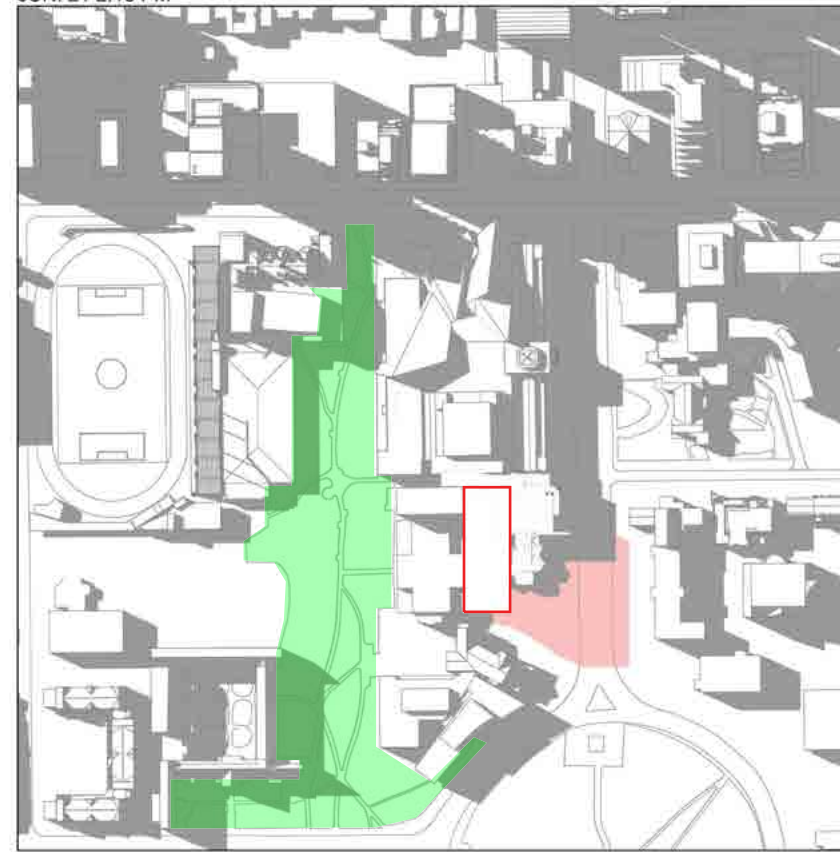


JUN. 21 4:18 PM

SUN SHADOW STUDIES - SUMMER SOLSTICE



JUN. 21 5:18 PM



JUN. 21 6:18 PM

SUN SHADOW STUDIES - SUMMER SOLSTICE

