

- ★ Indicates Revised Symbol
- █ In-situ Façade Retention
- - - Extent of In-Situ Façade Retention/Heritage Wall Rebuild to be determined
- █ Rebuilt Heritage Wall
- █ Sympathetic New Wall (design details to be determined)
- █ New Construction (replacement of existing 3-storey structure)
- - - Line of Clerestory Above Heritage Parapet
- | X m | Setback to Clerestory
- | X m | Setback to Tower Above





263-265 Queen Street East – existing condition

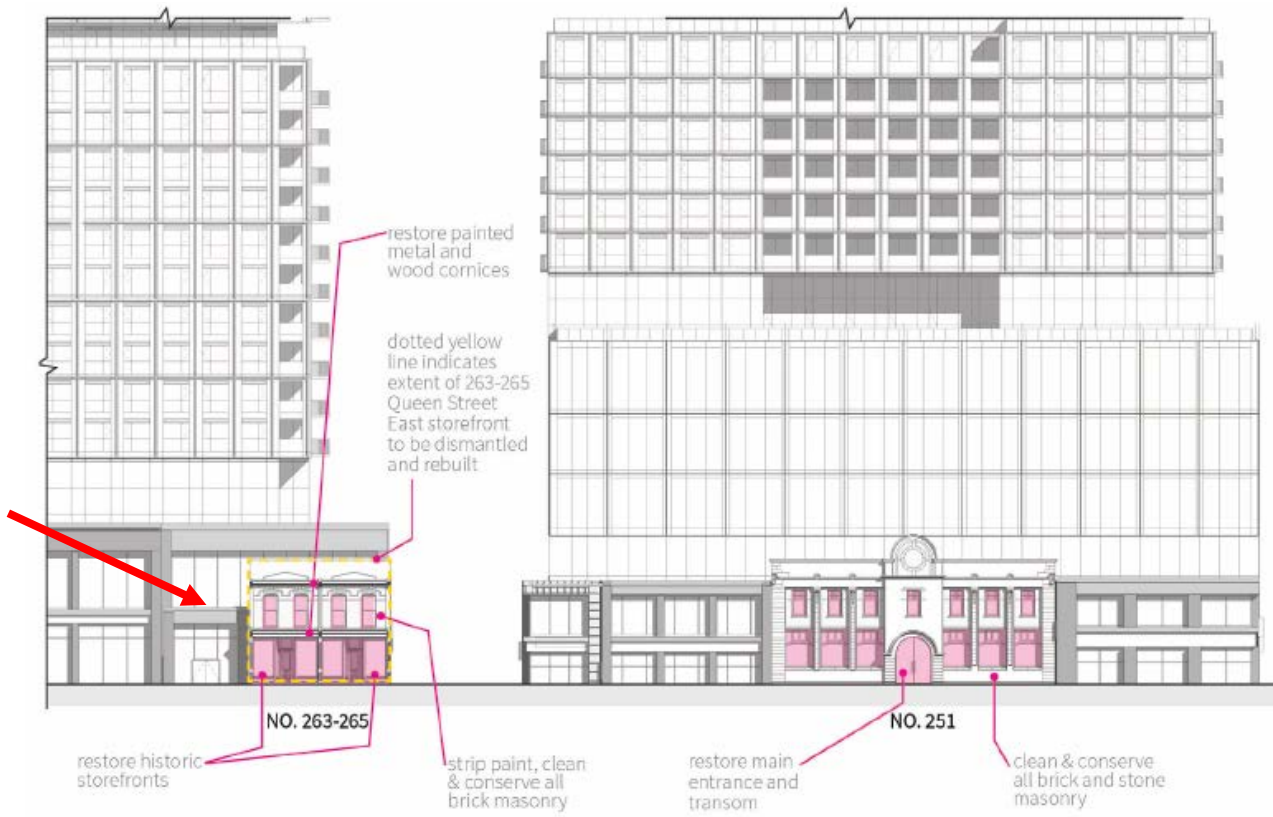


263 Queen Street (Nathan Cyprus 2019)

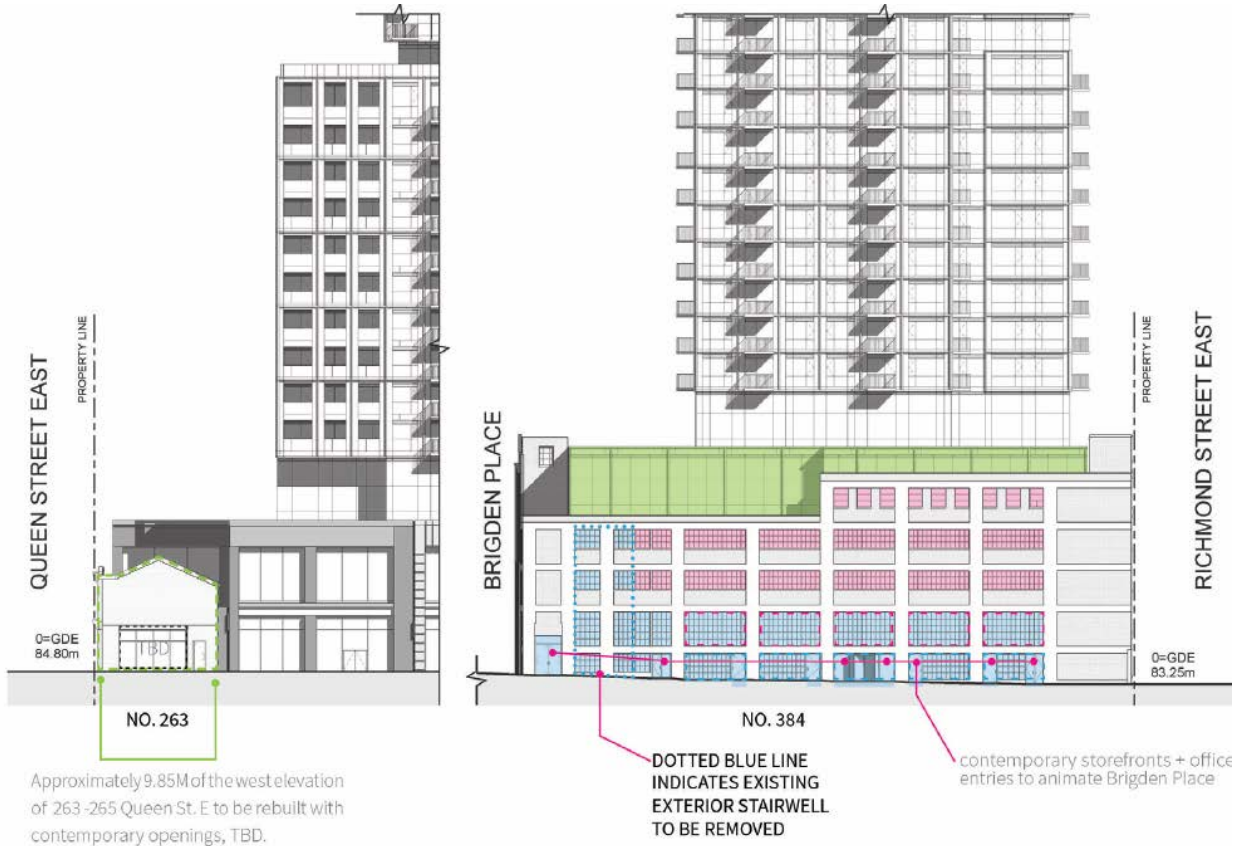


Stacked rubble foundation at 265 Queen Street East - typical (ERA 2018)

263-265 Queen Street East – current condition



263-265 Queen Street East (north elevation) – revised proposal



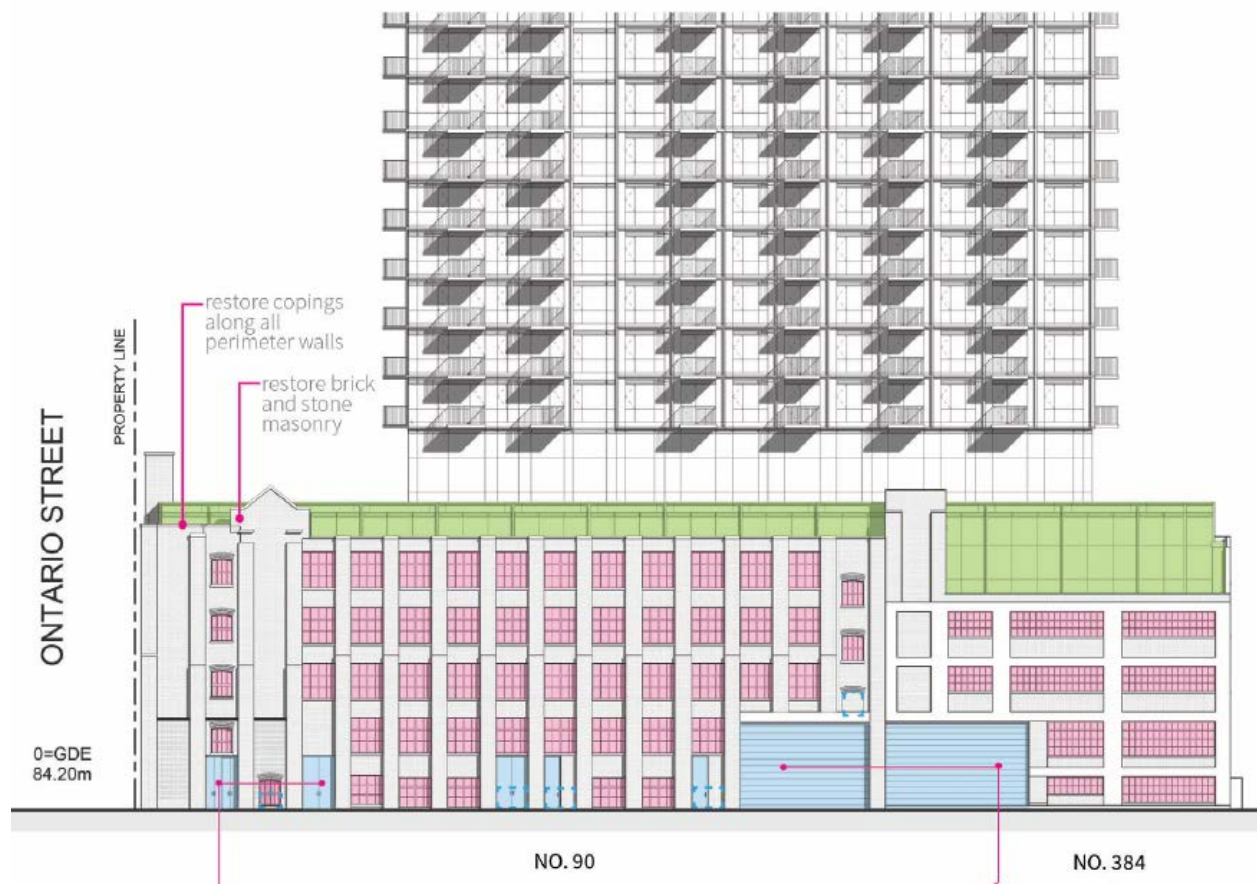
replace windows to match original

contemporary opening in original window or door location

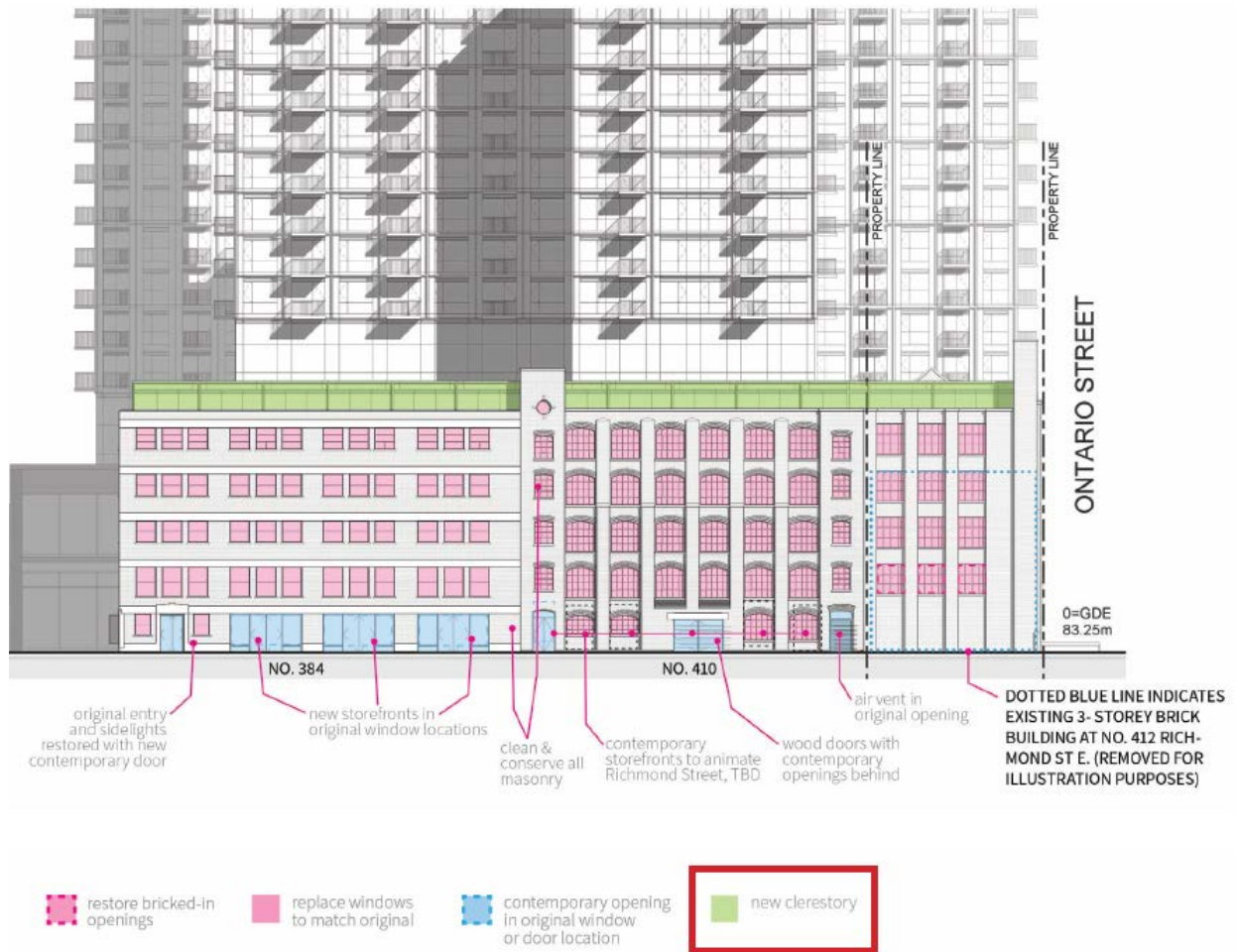
new window to match existing enlarged opening

new clerestory

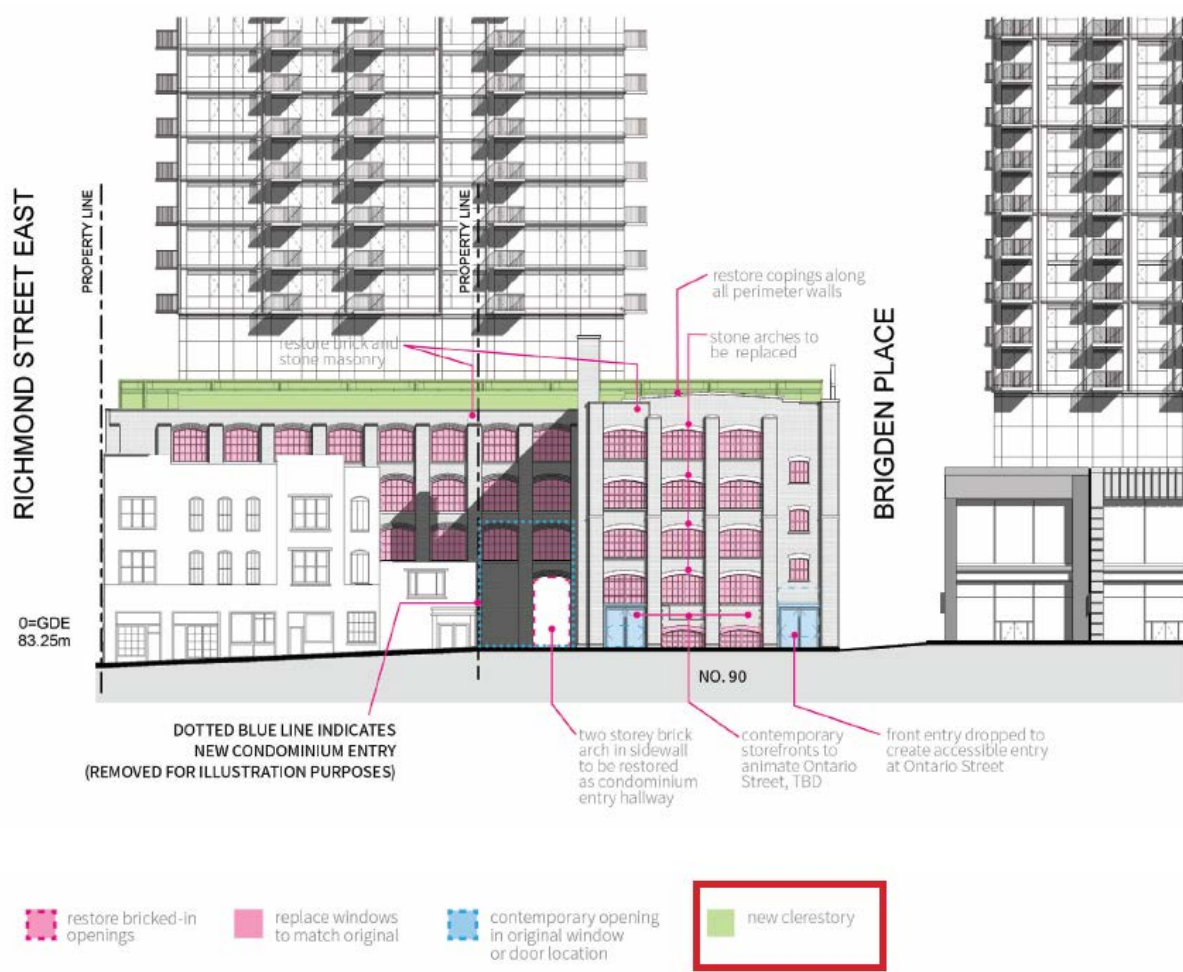
263-265 Queen Street East (west elevation) and 384 Richmond Street West – revised proposal showing new clerestory



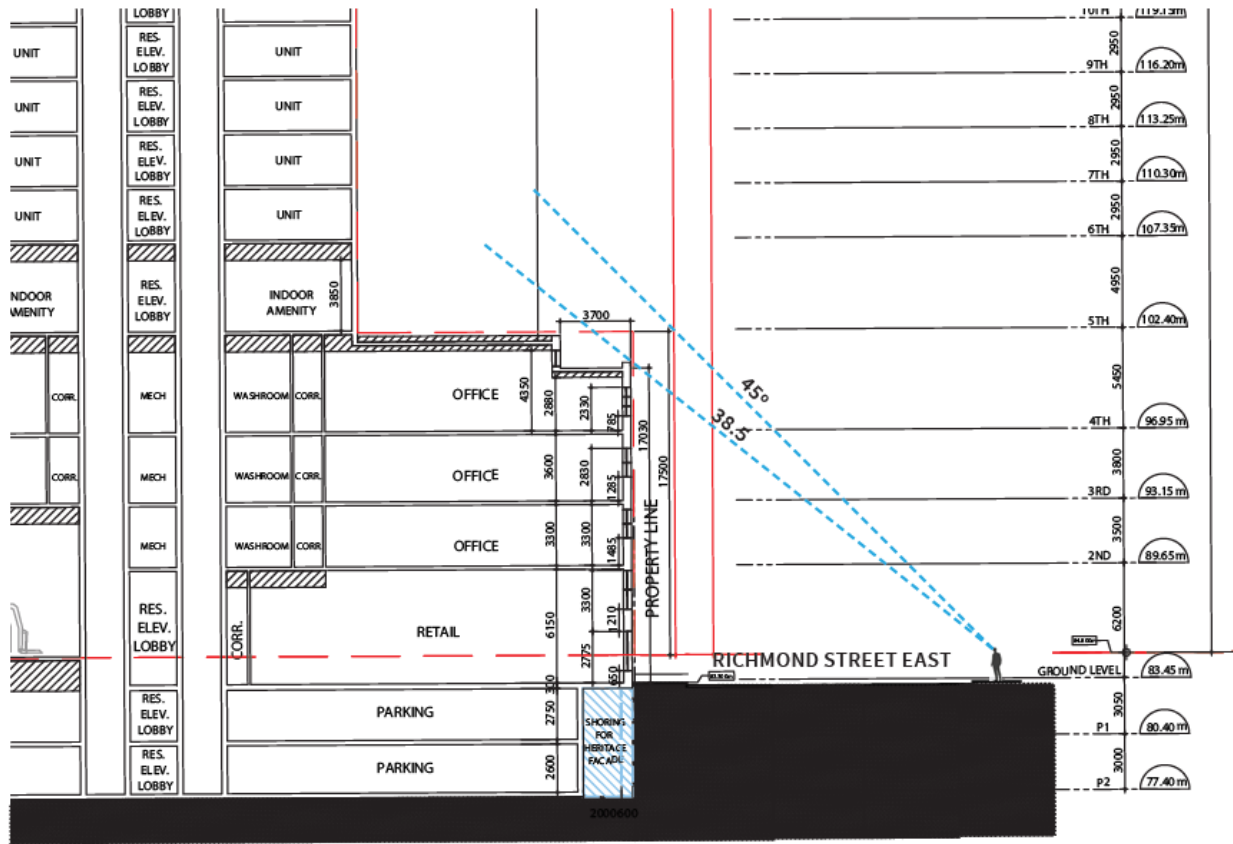
90 Ontario Street & 384 Richmond Street West (north elevation) – revised proposal showing new clerestory and retained additional bay of 90 Richmond St E



384 & 410 Richmond Street West (south elevation) – revised proposal showing new clerestory



90 Ontario Street & 410 Richmond Street West (east elevation) – revised proposal showing new clerestory



Section showing site lines to clerestory from south side of Richmond Street West