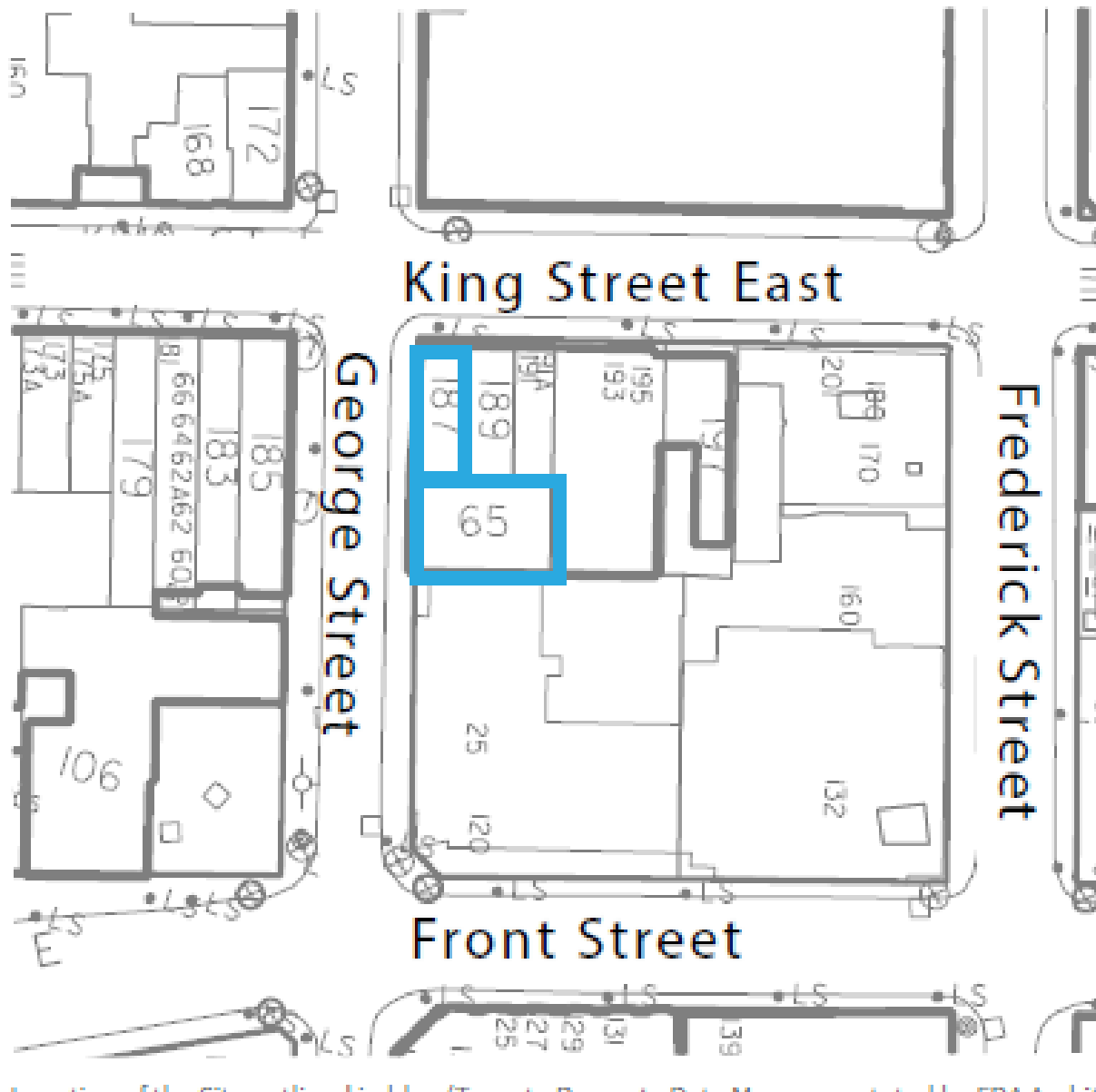


Appendix "A" –
Heritage Planning Staff's Photographs and Information

187 King Street East and 65 George Street

Location Map







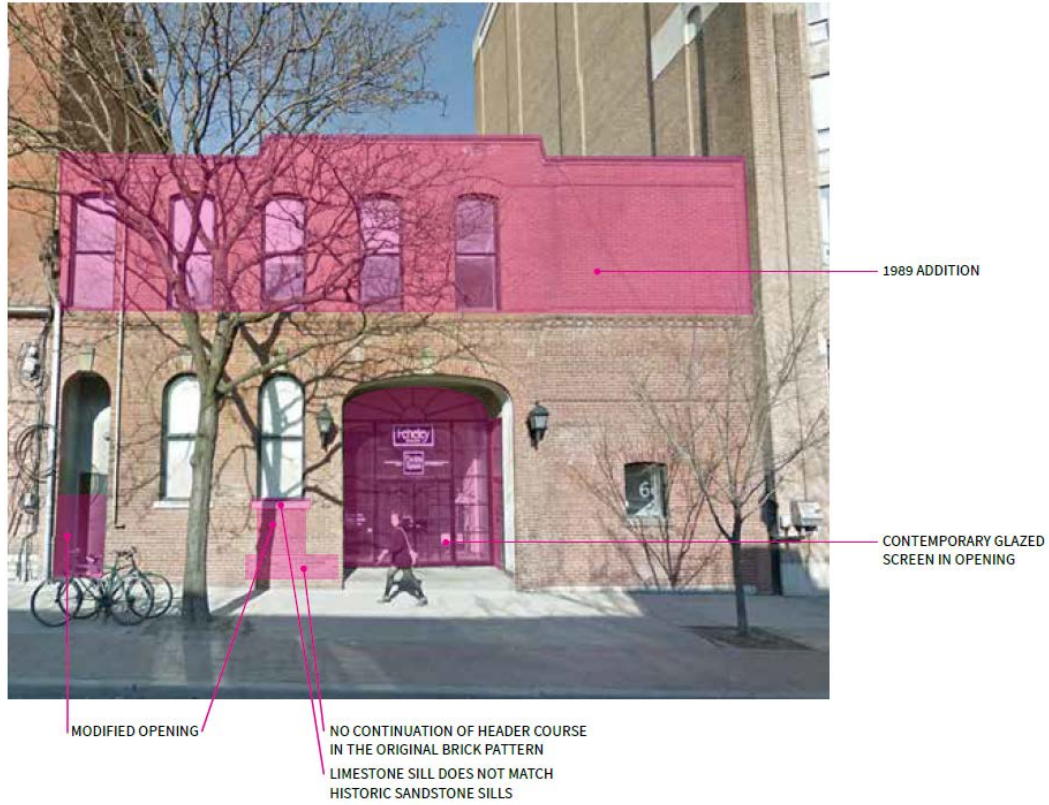
187 King St E – north (King Street) elevation

187 King Street East and 65 George Street

Photographs



65 George Street – west (George Street) elevation





Please note: Image is not exactly as proposed. The image shows a height of 16 storeys, the proposal is for 17 storeys. For illustrative purposes only.



Conceptual renderings of the Site (Core Architects, 2021).

- DISMANTLE & REBUILD (REMOVAL)
- CONSERVE (RETAIN)
- NEW CONSTRUCTION



West elevation showing proposed conservation approach (Core Architects, 2021, annotated by ERA).

**187 King Street East and 65 George Street
Conservation and Reconstruction Strategy**



Proposed west elevation