

A working vision for social assistance

Vision:

To create an efficient, effective and streamlined social services system that focuses on people, providing them with a range of services and supports to respond to their unique needs and address barriers to success so they can move towards employment and independence.

How we will realign:

Province

Delivers:

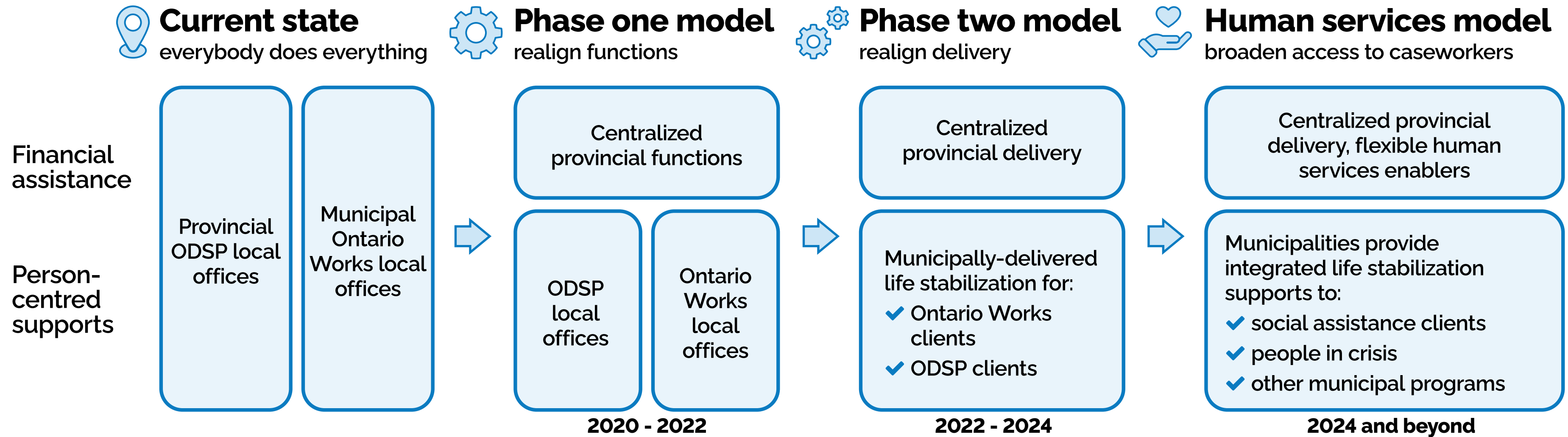
- ✓ End-to-end financial entitlements
- ✓ Financial controls and back-office functions suited to centralization or automation

Municipalities

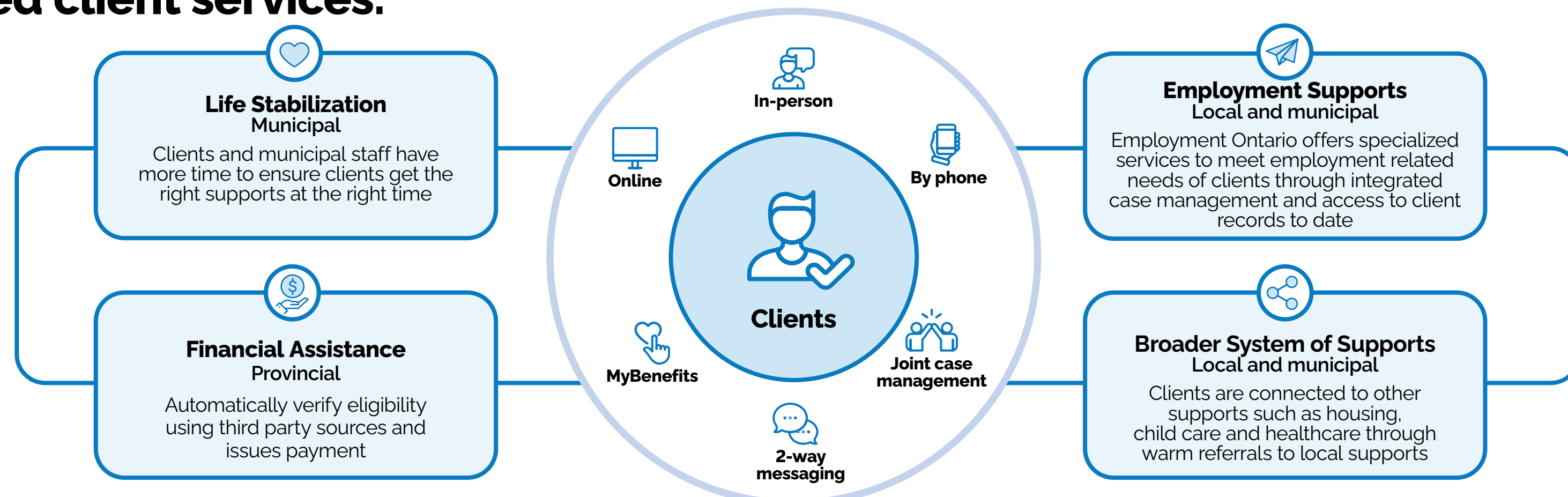
Delivers:

- ✓ Life stabilization – including needs assessment, service planning, warm referrals, discretionary benefits
- ✓ Person-centred, connected supports, and navigation of broader system (e.g., housing, employment, mental health)

How we will evolve over time:



Integrated client services:

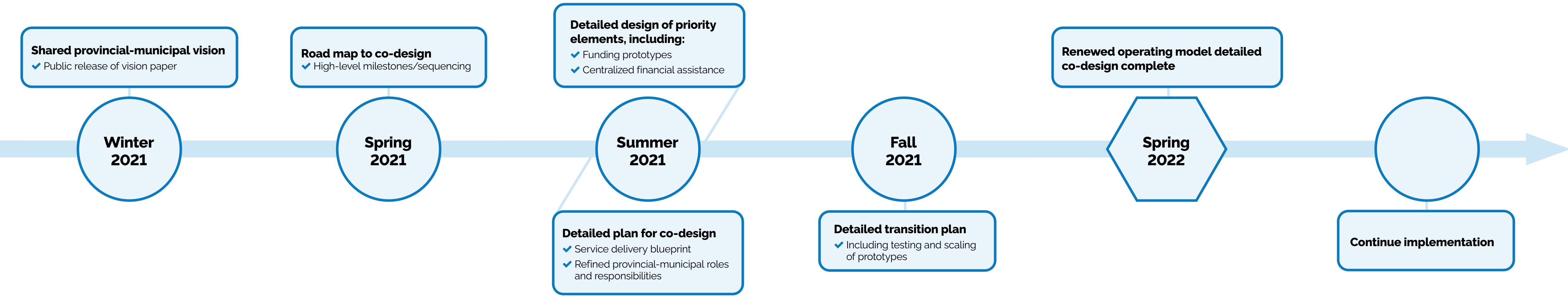


Social assistance: where we're headed

In the short term: co-designing a renewed operating model

Prototype and implement: developing centralized provincial functions, starting with intake, and tools and processes to support life stabilization

Co-design: engaging to design key operating model layers, provincial and municipal functions, principles and processes



In the long term: moving to a human services delivery model

- ✓ In the human services model, benefits like social assistance become “tools” in the caseworker toolbox, as opposed to the other way around
- ✓ Caseworkers are knowledgeable about the broader system of benefits and supports, and can guide people to the supports they need – whether Ontario Works or something else
- ✓ People seeking help are triaged by municipal caseworkers, supported as needed, and potentially diverted from social assistance

