



HousingNowTO.com

Email - info@housingnowto.com

Phone – 416-938-4722

July 5, 2021

Executive Committee
City of Toronto
100 Queen Street West
Toronto, ON M5H 2N2

RE : EX25.5 - Metrolinx Transit Expansion Projects

Mayor Tory & Members of the Executive Committee,

Since the Ontario Line was announced by the Premier almost 2-years ago, our **HousingNowTO.com** volunteers have been asking both the City and Metrolinx for the technical alignment details on the above-ground section that is expected to run on elevated guideways approaching the “Science Centre” station at the Don Mills Crossing interchange at Don Mills Road and Eglinton Ave.

Our volunteer’s concerns have been specific to the Ontario Line’s above-ground elevated guideways and how they will impact upon the two large “Housing Now” sites that have been identified for the development of new affordable-housing on the surplus 8.6 acres of City-owned land that is currently being used as surface parking-lots at 770 & 805 Don Mills Road.

Prior to the announcement of the above-ground Ontario Line alignment in this area, the City was engaged in development planning for over ~2,300 new units of housing on those parking-lots with approximately ~800 of those units to be dedicated as new affordable-housing.

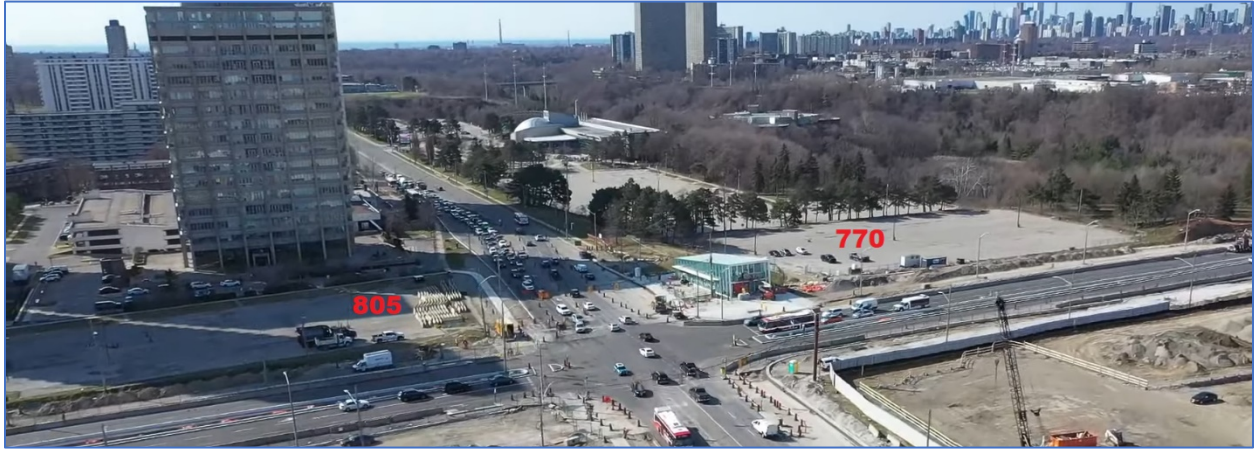
Clearly, as you can see from the attached images on Page 2, the required easements for the above-ground elevated guideways required for the Ontario Line at Don Mills Crossing – will reduce the potential footprint of new affordable-housing development on both the south-east and south-west corners of that intersection. However, due to the lack of any meaningful structural detail provided to the public by Metrolinx, it is currently impossible for our volunteers to accurately determine how much City-land will be lost to Ontario Line infrastructure easements – and the resulting impacts upon the City’s “Housing Now” plans for those sites.

Our volunteers would respectfully request that the Executive Committee require Metrolinx and the City’s Executive Director, Transit Expansion Office to provide full public disclosure of any and all anticipated Ontario Line easements that impact the lands at 770 & 805 Don Mills Road on or before Friday, July 30th, 2021.

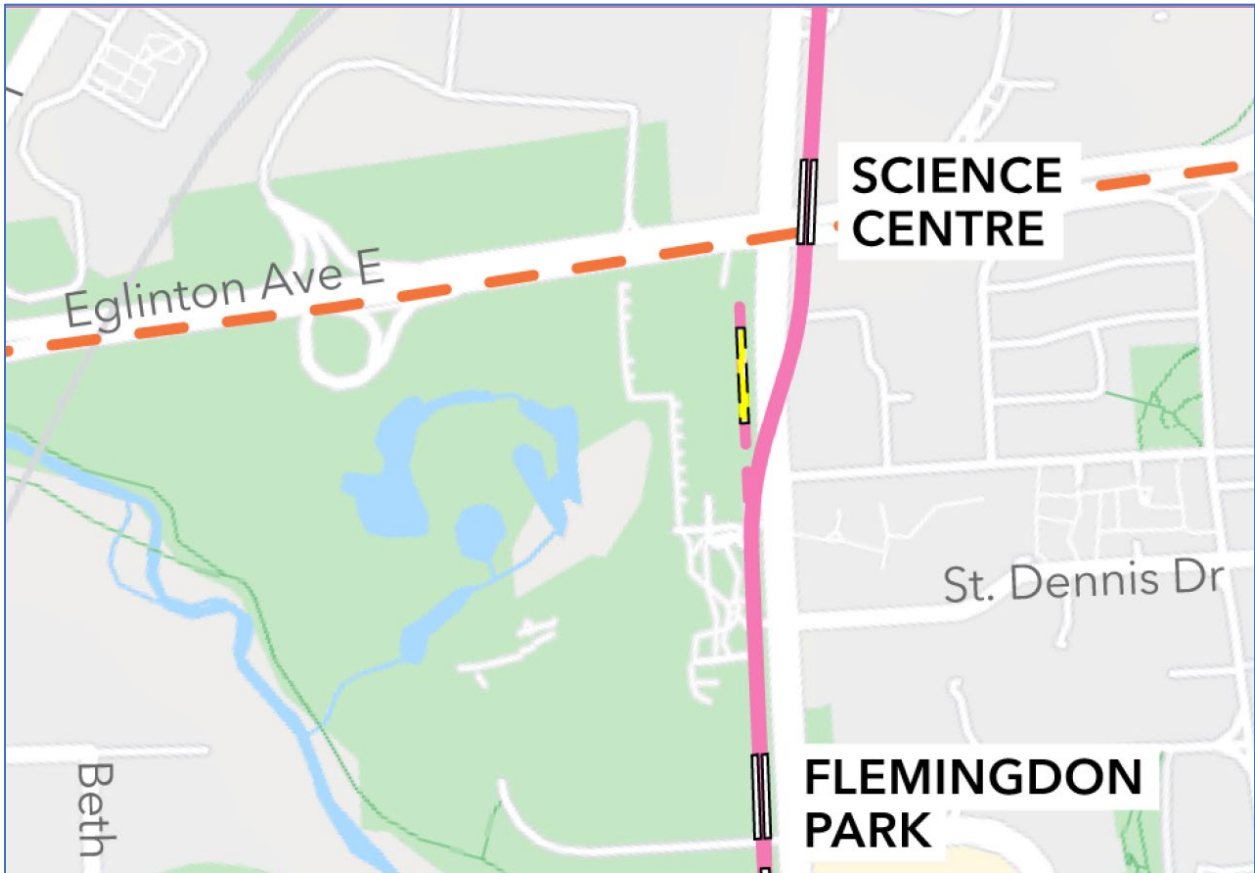
Yours,

Mark J. Richardson
Technical Lead – HousingNowTO.com

APPENDIX 'A' – Don Mills Crossing (looking South) – Metrolinx drone image April 2021 – HOUSING NOW sites at 770 & 805 Don Mills Road.



APPENDIX 'B' – Image from Ontario Line public-meeting materials (*April 2021) – Science Centre elevated guideways. Impacts on both HOUSING NOW sites at 770 & 805 Don Mills Road.



Source – (Slide 10) : <https://www.metrolinxengage.com/sites/default/files/ol-virtualopenhouse-210415.pdf>