

Assumption of Services, Registered Plan 66M-2543, 300 Valermo Drive - Valermo Homes Inc.

Date: May 14, 2021
To: Etobicoke and York Community Council
From: Director, Engineering Review, Engineering and Construction Services
Wards: Ward 3 - Etobicoke Lakeshore

SUMMARY

This report recommends that the municipal services installed under the terms of the Subdivision Agreement between Valermo Homes Inc. and the City of Toronto for Plan 66M-2543, dated September 13, 2017, be assumed by the City.

RECOMMENDATIONS

The Director, Engineering Review recommends that City Council:

1. City Council assume the services installed at Father Redmond Way, Treeview Drive and Vaudeville Drive and that the City formally assume the roads within the Registered Plan of Subdivision 66M-2543.
2. City Council authorize the Director, Engineering Review to release the portion of the performance guarantee held with respect to this Plan of Subdivision.
3. City Council direct that an assumption By-law be prepared to assume the public highway and municipal services within the Registered Plan of Subdivision 66M-2543.
4. City Council authorize and direct the City Solicitor to register the assumption By-law in the Land Registry Office at the expense of the Owner.
5. City Council authorize the City Clerk and the Chief Financial Officer and Treasurer to sign any release or other documentation necessary to give effect thereto.
6. City Council authorize the appropriate City officials to transfer ownership of the street lighting system constructed within the Registered Plan of Subdivision 66M-2543 to Toronto Hydro.

FINANCIAL IMPACT

The Recommendations have no financial impact beyond what has already been approved in the current year's budget.

DECISION HISTORY

The subject subdivision as shown on the attached map, Attachment #1 - 66M-2543 Assumption of Services Site Map, is approximately 3.44 ha in area and is bounded on the south by Valermo Drive, the north by New Haven Learning Centre and the west and east by rear lot lines from residential dwellings fronting onto Thirtieth Street and Bellman Ave. respectively.

The municipal services required under the terms of the Subdivision Agreement are in an acceptable condition to be assumed by the City for the Plan 66M-2543 dated September 13, 2017, between Valermo Homes Inc. and the City of Toronto. This includes the new roads Father Redmond Way, Treeview Drive and Vaudeville Drive. Toronto Hydro has also provided sign-off.

COMMENTS

Obligations respecting the roads and municipal services contained in the Subdivision Agreement have been satisfied. Toronto Hydro has provided clearance for the assumption of their infrastructure. In addition, the relevant City divisions have provided clearance with respect to the assumption of the roads and municipal services within the Plan of Subdivision.

CONTACT

Grace Tesa, P.Eng., Acting Manager, Development Engineering, Etobicoke York District, Telephone: 416-394-8383, email: Grace.Tesa@toronto.ca

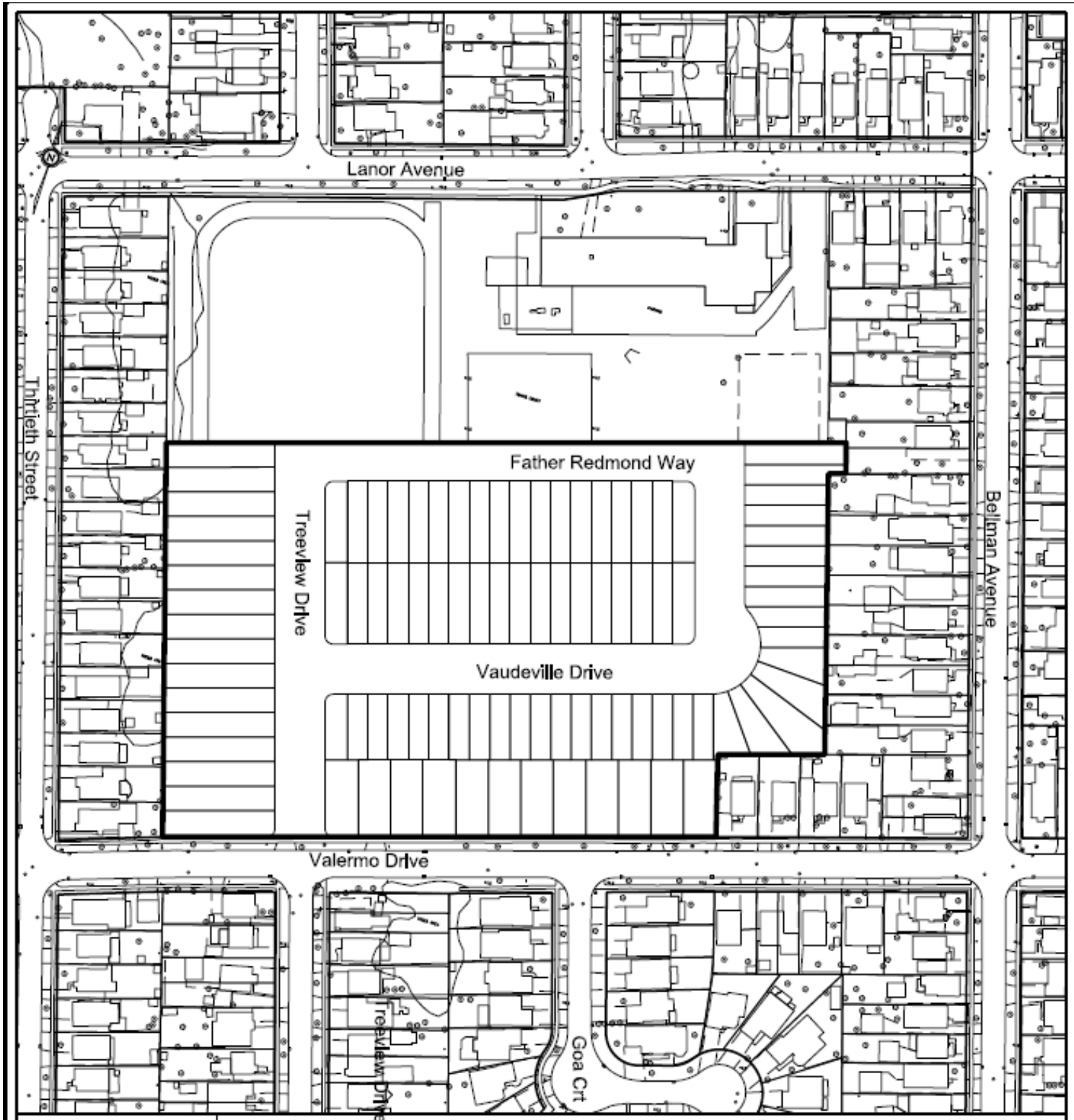
SIGNATURE

Judy Tse, P.Eng
Director, Engineering Review
Engineering & Construction Services

ATTACHMENTS

Attachment 1 - 66M-2543 Assumption of Services Site Map

Attachment 1 - 66M-2543 Assumption of Services Site Map



Toronto

ENGINEERING & CONSTRUCTION SERVICES
ENGINEERING SUPPORT SERVICES
LAND & PROPERTY SURVEYS

NOTE:
THIS SKETCH HAS BEEN
COMPILED FROM OFFICE
RECORDS, MEASUREMENTS
ARE APPROXIMATE

CHECK BY ANA MICHALEK

PREPARED BY: DWAYNE PITT

PROPERTY INFORMATION SHEET
ATTACHMENT #66M-2543
ASSUMPTION OF SERVICE SITE MAP

WARD 3 - ETOBICOKE-LAKESHORE
DATE: MARCH 23, 2021

SKETCH No. PS-2021-022