

## **ATTACHMENT 2: OFF-STREET RATE REVIEW**

---

Parking rates at TPA off-street parking facilities are reviewed at least once annually to ensure current rates address demand patterns that in turn allows TPA to deliver its mandate of providing short-stay, high-turnover parking in order to serve the greatest number of customers. In instances where it is required, more frequent reviews are undertaken.

TPA Policy Resolution 2-1, Parking Rates – Off-Street Facilities provides the framework for setting parking rates at all off-street facilities and includes the objectives for parking rates, the parking rate structure, and the guidelines / benchmarks for parking rates, including the consideration of a comparable competitor benchmark, where appropriate.

As part of the comprehensive annual rate review, TPA compiles operational data and analyzes a number of factors related to the performance of specific locations and groups of locations. Locations are first screened for year over year changes to the number of transactions, peak usage rates and annual revenue. Locations that have experienced annual increases in these indicators and which have peak occupancy rates of 85 percent or greater (anything greater than 85 percent is considered overcapacity) are identified as candidate locations for a rate increase. Benchmarking is also conducted to ensure competitiveness with private parking operators in close proximity to TPA facilities.

Following the first screening, operating anomalies that may have impacted the performance of a location are considered. For example, where TPA off-street facilities and local business are affected by a construction project (example: Eglinton Crosstown or the reconstruction of College Street) through the temporary displacement of on-street parking, off-street rates will typically be maintained until after the construction period has been completed.

### **Usage and Revenue Performance Parameters**

Both usage and revenue data for May 2021 year-to-date (YTD) were reviewed to assess the appropriateness of rates at TPA's off-street facilities. This includes the examination of peak vehicle occupancy, percentage of all-day parkers (long-stay and commuters) and total transactions (vehicles parked) by time of day.

Appendix 1 summarizes the usage and revenue performance of each of TPA's car parks. For each facility, the following data was collected and assessed:

- **Peak Usage** (percent): peak occupancy is the greatest number of vehicles parked during the peak hour in a day, expressed as a percentage of the number of parking spaces available and is observed for busy weekdays (Tuesday - Thursday) and weekends (Saturday and Sunday);

- **All:** the number of long-term parking vehicles parked for a duration of three (3) or more hours;
- **Commuters:** the number of cars entering the facility between 6:00 am to 10:00 am, and staying for eight (8) hours or more. Note that this is a subset of All;
- **Car Entries:** the distribution of transactions over the day as identified by the percentages of transactions (cars) occurring during the daytime (6:00 am – 3:00 pm), afternoon (3:00 pm – 6:00 pm), and nighttime (6:00 pm – 6:00 am) periods. This provides an indication of car park usage throughout specified time periods and assists in the assessment of day and night maximum rates; and,
- **Revenue:** the performance of the Controlled and Uncontrolled off-street Facilities, including annual revenue, transaction volume and percentage changes for the period ending May 2021.

The objective is to use this information to establish pricing that ensures parking is always available (i.e. avoid over-capacity demand) to accommodate short-term parking demands. Peak usage is therefore an imperative measure to assess the capacity of a parking facility. Anything greater than 85 percent usage at specific parking locations is considered at/over-capacity. This measure is a key tool used to monitor the off-street program and meet the rate-setting objectives (provide short-term parking) of TPA Policy Resolution 2-1, Parking Rates – Off-Street Facilities.

### **Car Park Performance**

TPA operates 249 off-street facilities, including 167 under its jurisdiction and an additional 82 that TPA manages under parking management agreements on behalf of third parties. As was the case in 2020, the impact of the Covid-19 pandemic on commercial retail and commuter activity has significantly impacted the operational performance of TPA's off-street facilities in 2021.

In 2019, TPA's off-street facilities generated \$103 million in gross revenues. Exhibit 1 shows the monthly performance of TPA's off-street facilities from January 2019 to July 2021 and demonstrates the impact of the Covid-19 pandemic on parking transactions and revenue beginning in February of 2020.

Since the start of the Covid-19 pandemic, parking demands were most impacted during March and April 2020 with reductions in revenue of 32 and 69 percent and the number of transactions by 36 percent and 74 percent month over month. Following the last lockdown (April 2021), an upward trend (month over month) has been observed over the months of May, June and July in both revenue (14 percent, 39 percent and 22 percent increase) and transactions (25 percent, 29 percent, 19 percent).

**Exhibit 1: TPA Off-Street Facilities Performance (January 2019 – July 2021)**

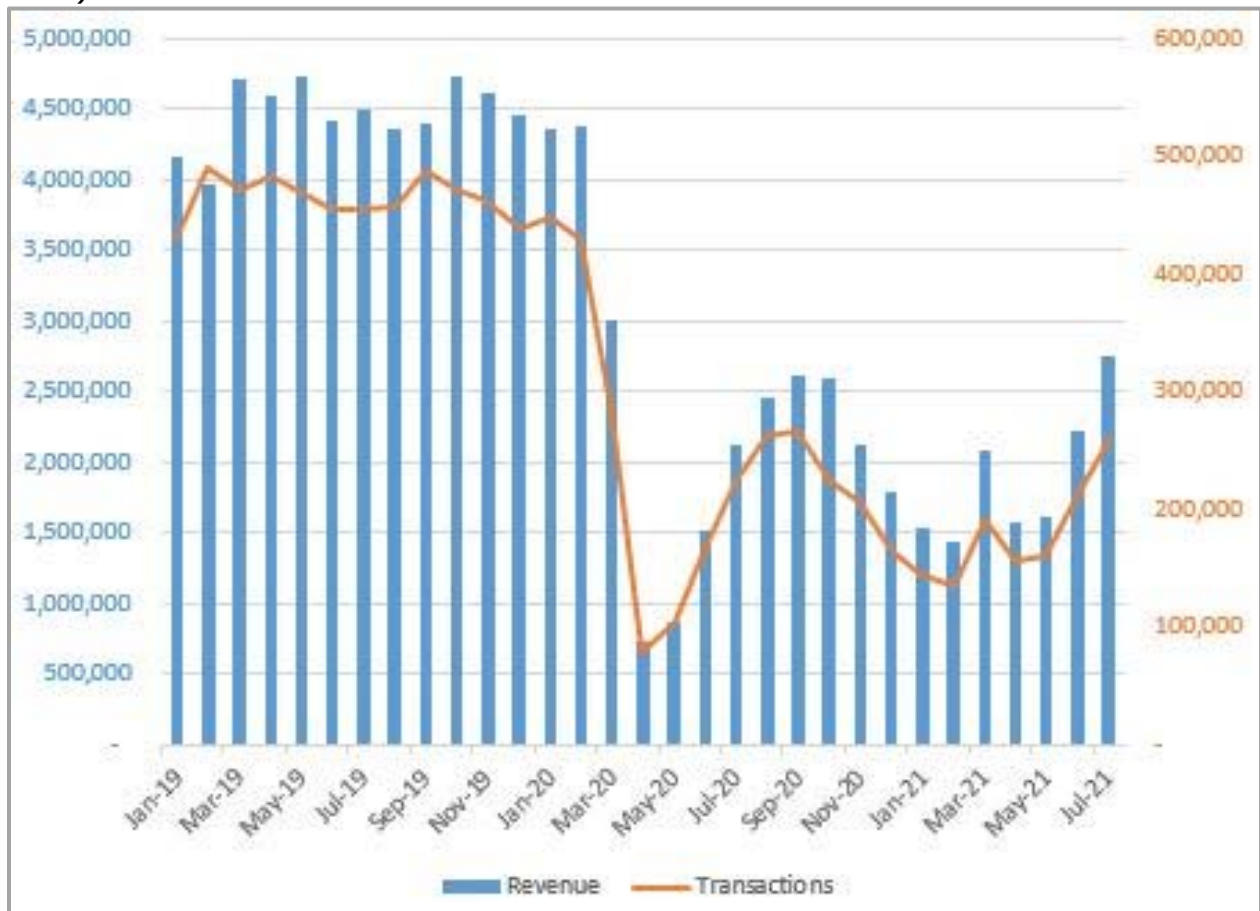


**Controlled Facilities**

TPA has 27 controlled (gated) parking facilities, three of which are a combined controlled and uncontrolled facility, that together accounted for 49 percent of gross revenue generated at all TPA off-street facilities in 2019. Exhibit 2 below illustrates the performance of the 27 car parks on a month to month basis from January 2019 to July 2021.

The number of transactions and revenue generated at these locations shows a similar trend to the remainder of TPA’s car parks with revenues and transactions dropping by 31 percent and 34 percent in March 2020 from February 2020 and again by 76 and 72 percent in April 2020 from March 2020. After the end of the last lockdown in April 2021, revenue and transactions grew month over month by 37 and 31 percent in June 2021 and again month over month by 24 and 23 percent in July 2021 to the highest trend since the start of the pandemic.

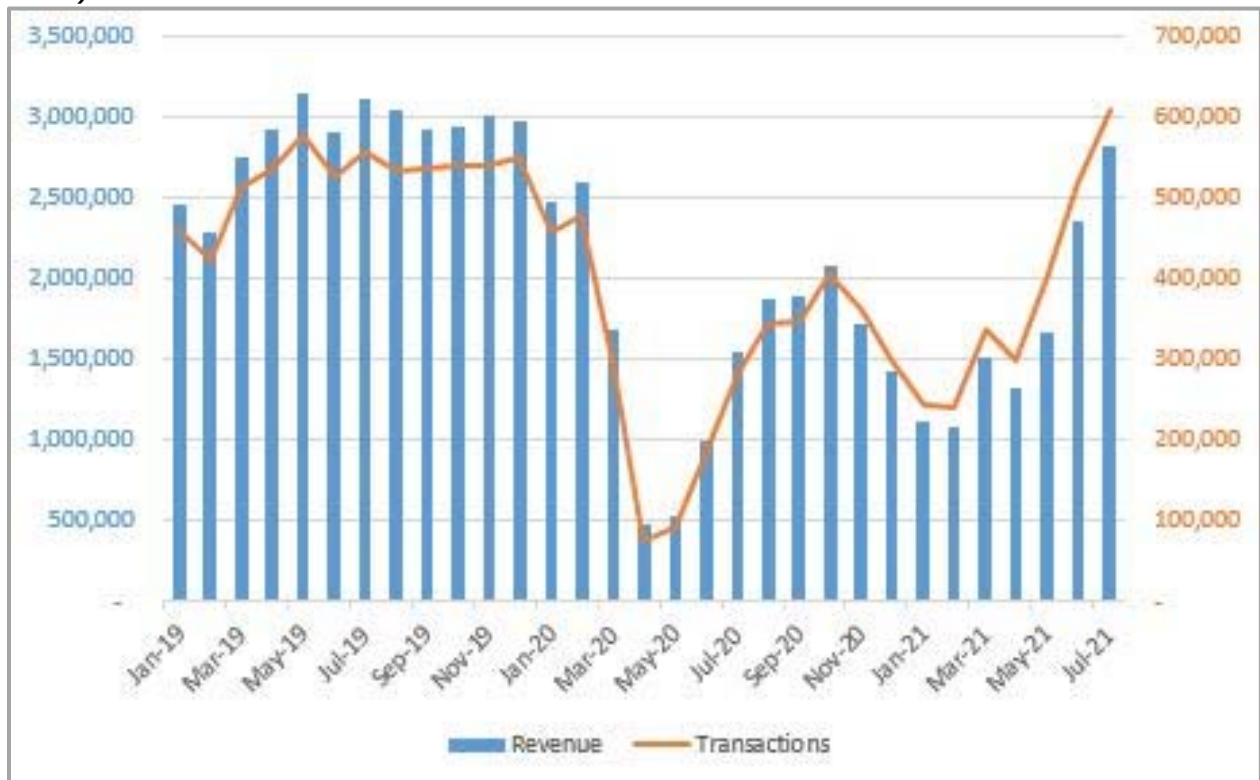
**Exhibit 2 – TPA Off-Street Controlled Facility Performance (January 2019 to July 2021)**



**Uncontrolled Facilities**

TPA has 222 uncontrolled parking facilities that in 2019 accounted for 39 percent of the gross revenue generated by all of TPA’s off-street facilities. Exhibit 3 illustrates the performance of the uncontrolled car parks on a month to month basis since January 2019. Similar trends of parking activity reductions that correlate to the beginning of the pandemic and recovery since May 2021 are shown.

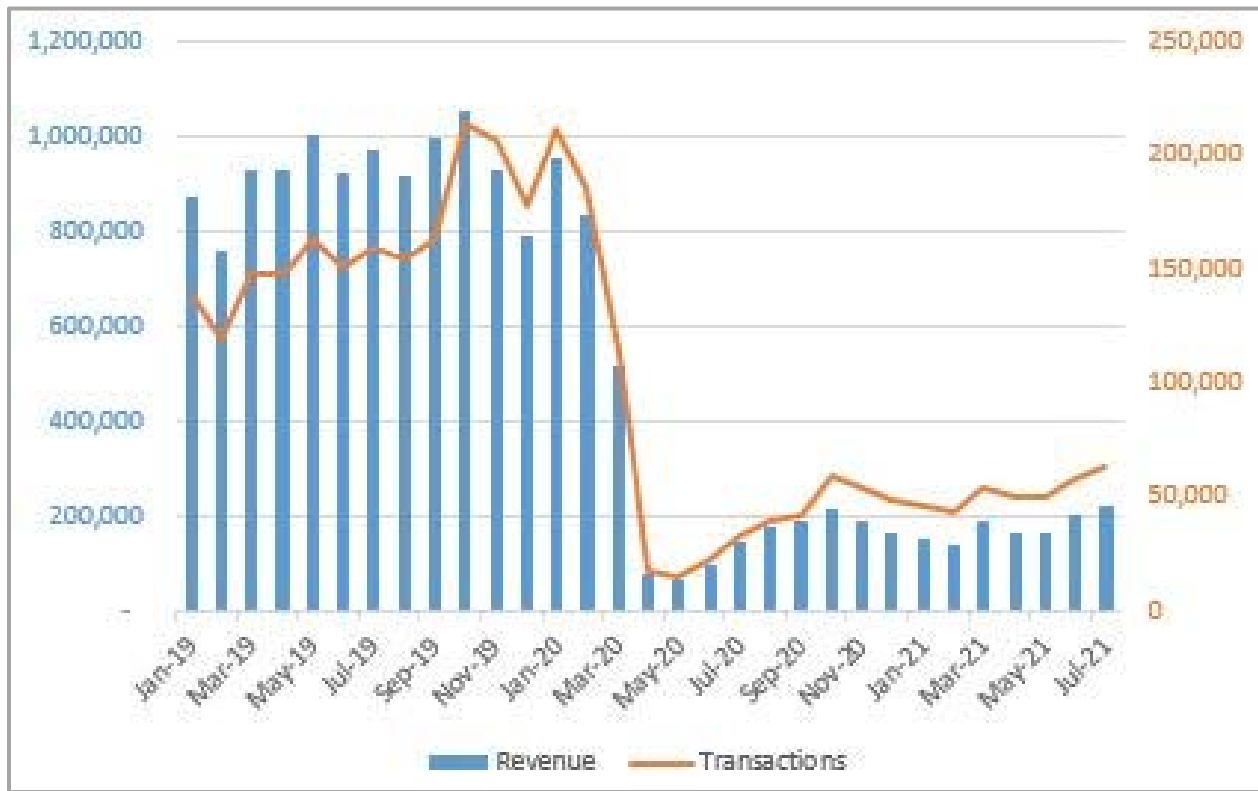
**Exhibit 3 – TPA Off-Street Uncontrolled Facility Performance (January 2019 to July 2021)**



**TTC Commuter Lots**

TPA has 23 parking facilities that it operates on behalf of TTC as commuter lots. Exhibit 4 illustrates the performance of the 23 car parks on a month to month basis over the last two (2) and a half years. As can be seen, the use of public transit and in turn commuter parking lots has been significantly impacted by Covid-19 since March 2020 with a slight increase over the past few months.

**Exhibit 4 – TPA Off-Street Commuter Facilities Performance (January 2019 to July 2021)**

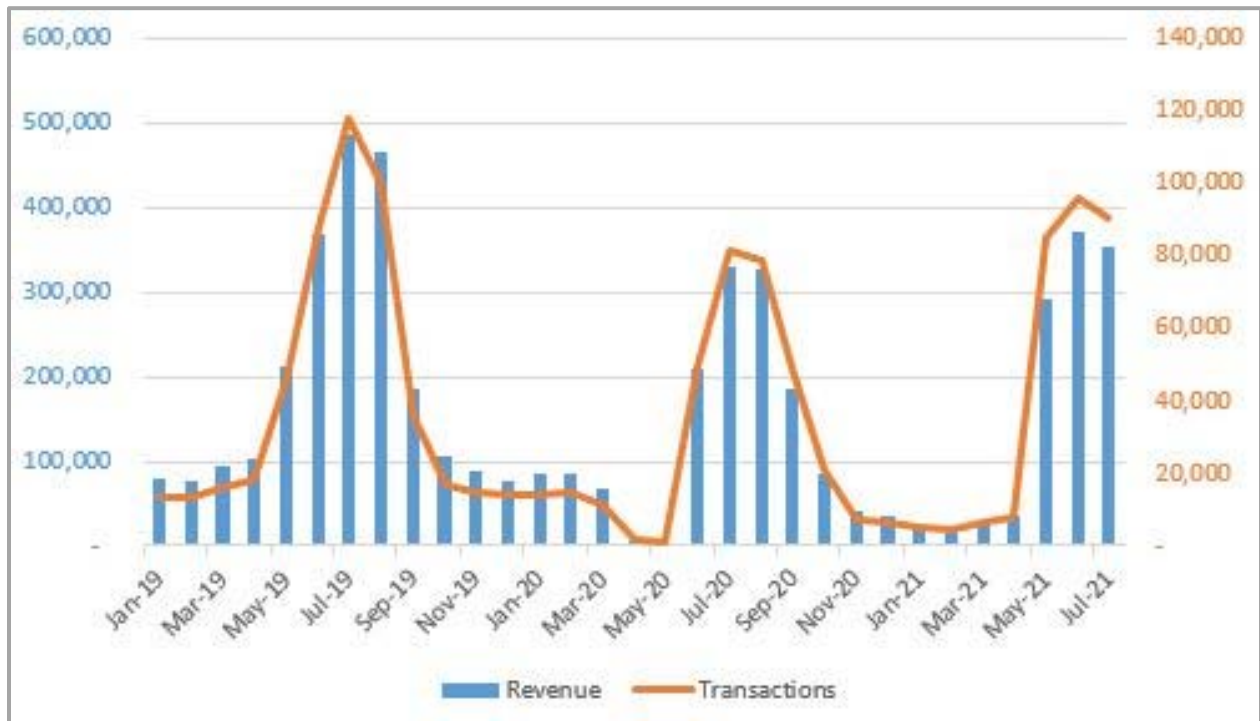


**Parks, Forestry and Recreation Lots**

TPA operates 20 parking facilities on behalf of Parks, Forestry and Recreation (PFR), 15 of which are operated seasonally from April / May to October / November. Exhibit 5 depicts the performance of the 20 car parks on a month to month basis since January 2019.

PFR lots located near the waterfront including some year round lots were closed from April to June 2020 in an effort to restrict the spread of Covid-19. The delay of the start of operations at some of these locations in 2020 and the seasonality of operation in 2021 is evident in Exhibit 5.

**Exhibit 5 – PFR Off-Street Parking Facilities Performance (January 2019 to July 2021)**



**Competitor Rates**

As part of the annual rate review, TPA carries out a review of comparable competitors within a 185-metre (approximately 600 feet) radius of TPA facilities. The purpose of the review is to ensure that the existing rates and any proposed rate changes are consistent with the rate structure of comparable competitors and TPA’s off-street rate setting policy.

The practise of benchmarking provides further assurance that the rates at TPA facilities will ensure an availability of short-stay, high turnover parking supply. If the rates are too low relative to competitor lots, peak usage may exceed targeted occupancy rates of 85 percent resulting in customers’ not finding parking and potentially not returning in future. If the rates are too high, relative to competitor lots, peak usage and revenues will be negatively affected.

As a result of the Covid-19 pandemic and the financial impacts that have resulted, TPA carried out a focused review of comparable competitors near TPA’s car parks in the downtown core to confirm TPA’s expectations that parking rates are not being increased. In total, the comparable competitors of forty-four (44) of TPA’s car parks were reviewed in order to gauge the rate setting practices of the competition. Based on the review

undertaken, it was found that comparable competitors are generally holding their rates in 2020 and 2021.

## **Proposed Rates**

### *Monthly Rates*

As part of the annual off-street rate review, monthly rates are reviewed to determine if rates meet TPA Board Policy 2-1, Parking Rates – Off-Street Facilities benchmark: monthly rates should normally be between fifteen (15) and twenty (20) times the day maximum rate. Where monthly rates are lower than this benchmark, TPA has been increasing monthly permit rates incrementally on an annual basis.

<b>Existing Monthly Rate Range</b>	<b>Monthly Rate Increase Guideline</b>
\$0.00 - \$99.99	\$5.00
\$100.00 - \$199.99	\$10.00
\$200.00 - \$299.99	\$15.00
\$300.00 - \$399.99	\$20.00
\$400.00 - \$499.99	\$25.00

Given the ongoing financial impacts of the Covid-19 pandemic, it is recommended that monthly rates that are at or above the benchmark not be increased this year. It is further recommended that monthly rates be established at three (3) locations and monthly rates at 153 locations, where rates are currently below the benchmark, be increased incrementally in accordance with the Monthly Rate Increase Guideline.

The Covid-19 pandemic has demonstrated that increased permits could be considered during periods of reduced parking demands. In turn, TPA should have greater flexibility to offer permits at car parks that have a lower peak occupancy. To ensure occupancy is available for short-term parkers, permits should only be offered if the peak occupancy, after the issuance of permits, is below 70 percent at uncontrolled facilities, and 85 percent at controlled facilities.

The 70 percent peak occupancy threshold at uncontrolled facilities is aimed to account for illegally parked vehicles (subject to Parking Violation Notices), seasonal fluctuations and allows room for growth in demands. This approach is consistent with TPA's mandate to maximize turnover with short-term parking and serve the greatest number of customers. TPA reserves the right to terminate monthly permits at any time and may do so in the event outlined above where parking capacity becomes limited and the thresholds noted require a reduction in the number of permits.

The proposed new monthly rates as detailed in Appendix 1, are consistent with TPA Policy Resolution 2-1: Parking Rates – Off-Street Facilities, which indicates that monthly



rates should normally be fifteen (15) and twenty (20) times the day maximum rate. In instances where a car park has no day maximum, the half hour was used. For example, a half hour rate of \$1.00 over 8 hours is \$16.00. The calculated day maximum rate of \$16.00 is multiplied by 15 to generate a monthly permit rate of \$240.00. In the instance of monthly permit only car parks, day maximum rates at nearby car parks were used as an indications to determine if the monthly permit rates fit within the monthly permit rate benchmarks identified in TPA Policy Resolution 2-1.

### **Next Steps**

Should TPA Board of Directors approve the monthly permit rate increases and establishment of new monthly rates at the car parks identified, TPA will proceed to implement the new rates on or before December 1, 2021.

### **Appendices**

Appendix 1 – Proposed Rate Changes and Justifications – Controlled and Uncontrolled Facilities

**APPENDIX 1 - PROPOSED RATE CHANGES AND JUSTIFICATIONS**

**CONTROLLED FACILITIES**

CP#	Car Park Address	Space Count	1/2 Hour Rate	Day Max (7am - 6pm)	Evening Max (6pm-7am)	Other Rate	Monthly Permit				Comments	Usage - Weekday			Usage - Sat			Usage - Sun			Proposed Changes Monthly Rate	Car Entries			May 2021 Year to Date Rev	May Year Over Year % Change 20/21 Rev	May Year Over Year % Diff 20/21 Transactions
							Rate	Quota	Issued	Tenant Rate / Other Rate		Peak Usage	All	Comm.	Peak Usage	All	Comm.	Peak Usage	All	Comm.		Day %	Afternoon %	Night %			
1	20 Charles St. E	641	\$3.00	\$16.00* / \$7.00**	\$6.00		\$260.00	0	13		*Incremental increase Day Max, approved up to \$18.00 2019 RR; **\$7.00 weekend Day Max.	17%	15%	8%	14%	9%	3%	13%	5%	2%		18%	55%	27%	363,327	-38%	-37%
5	15 Wellesley St. E.	126	\$3.00	\$20.00	\$9.00		\$290.00	0	0		MP rate increase	59%	48%	15%	28%	18%	2%	26%	7%	6%	\$305.00	62%	18%	20%	248,700	-14%	-13%
11	21 Pleasant Blvd	549	\$3.00	\$16.00* / \$6.00**	\$6.00		\$200.00	100	62		*Incremental increase Day Max (7 am - 6 pm Mon-Sun/Hol) approved up to \$20.00 2019 RR; ** \$6.00 weekend Day Max; MP rate increase	24%	20%	14%	13%	11%	10%	13%	10%	10%	\$215.00	82%	13%	5%	270,768	-39%	-24%
12	30 Alvin Ave.	179	\$4.00	\$25.00 / \$22.00*	\$6.00**		\$330.00	0	0		*Incremental increase Day Max approved up to \$26.00 2019 RR; Mon-Sun/Hol Day Max \$25 (entering 6am-10am), \$22 (entering 10am-6pm); **Evening Max from 6am-6pm; MP rate increase	54%	40%	22%	9%	4%	1%	8%	2%	0%	\$350.00	83%	12%	5%	303,931	-15%	-17%
13	20 Delisle Ave	200	\$3.00	\$17.00 / \$4.00*	\$6.00 / \$4.00**		\$255.00	0	0		Controlled and uncontrolled facility. *Weekend \$4.00 Day Max **Weekend \$4.00 Evening Max.	15%	14%	9%	4%	3%	1%	3%	2%	1%		88%	8%	4%	126,028	-58%	-72%
26	37 Queen St. E	631	\$4.00	\$32.00 / \$20.00*	\$7.00	\$7.00**	\$450.00	0	26		*Day Max (Entering 7 am-10am) \$20.00, (entering 10 am-6pm) \$32.00; Incremental increase Day Max approved up to \$35.00 2019 RR; **Day Max Sat/Sun/Hol.; MP rate increase	48%	41%	14%	32%	25%	14%	32%	15%	7%	\$475.00	56%	12%	32%	1,337,087	-13%	-8%
29	75 Holly St	299	\$2.50	\$15.00 / \$5.00*	\$6.00		\$250.00	0	52	\$130.00 tenant	*Weekend Day Max \$5.00; Tenant MP rate increase	48%	40%	27%	29%	25%	15%	28%	0%	0%	\$140.00 tenant	76%	12%	12%	302,276	-42%	-36%
34	25 Dundas St. E	257	\$3.00	\$22.00 / \$11.00*	\$9.00		\$425.00	0	3		*Day Max Sundays \$11.00	25%	22%	9%	15%	6%	2%	15%	0%	0%		67%	21%	12%	257,396	-60%	-55%
36	110 Queen St. W	1634	\$3.50	\$20.00 / \$8.00*	\$6.00		\$340.00	350	164		*Sat/Sun/Hol Day Max (7am-7pm)	27%	27%	18%	23%	14%	18%	22%	0%	0%		84%	7%	9%	1,212,886	-54%	-48%
39	20 Castlefield Ave.	171	\$3.00	\$18.00 / \$6.00*	\$10.00 / \$5.00**		\$230.00	0	11		*Weekend Day Max \$6.00; **Weekend Evening Max \$5.00; MP rate increase	15%	11%	7%	12%	9%	6%	11%	0%	0%	\$245.00	79%	15%	6%	51,831	-75%	-73%
42	91 Via Italia	169	\$1.50	\$7.50*	\$4.00**		\$90.00	0	49		*12 hrs rolling Day Max (6am-6pm) **12 hrs rolling evening max (6am-6pm); MP rate increase	37%	36%	29%	33%	29%	24%	33%	4%	0%	\$95.00	80%	11%	8%	58,992	-18%	-15%
43	2 Church St	1960	\$3.00	\$16.00 / \$7.00**	\$7.00	*	\$230.00	0	171	\$120.00 tenant	*Saturdays \$1.00/hr for first 2 hrs, normal rates thereafter (ENTRY BETWEEN 5AM-6PM ONLY); **Weekend Day Max \$7.00; MP and Tenant MP increase	26%	22%	16%	17%	12%	8%	16%	7%	6%	\$245.00 / \$130.00 tenant	76%	6%	18%	950,124	-50%	-37%
49	30 Roehampton Ave	185	\$2.50	\$18.00 / \$6.00*	\$6.00		\$270.00	0	0		*Weekend Day Max \$6.00. MP rate assigned for reference	41%	36%	19%	21%	14%	2%	21%	7%	6%		71%	12%	17%	191,489	-9%	-62%
52	40 York St	311	\$4.00	\$25.00 / \$8.50*	\$9.00**		\$425.00	0	0	\$100.00 other	*Weekend Day Max \$8.50. **Night Max 5 pm - 7 am	18%	16%	5%	12%	9%	2%	12%	53%	53%		76%	12%	13%	239,551	-60%	-58%
58	9 Bedford Rd	371	\$3.00	\$16.00 / \$8.00*	\$8.00		\$290.00	0	5		*Weekend Day Max \$8.00	24%	22%	11%	16%	14%	3%	16%	100%	27%		79%	11%	10%	296,238	-59%	-58%
68	30 St. Andrew St	415	\$2.50	\$9.00	\$6.00		\$180.00	60	54	\$85.00 other	Rates in line with nearby facility at CP150 (44 Larch St); Tenant MP rate increase	44%	41%	28%	41%	25%	13%	39%	0%	0%	\$90.00 tenant	71%	17%	11%	310,056	-6%	-5%
125	323 Richmond St. E	252	\$2.50	\$18.00*	\$8.00**		\$245.00	0	1	\$110.00 other	Pay on Foot, Not Attended. Incremental increase Day Max approved up to \$20.00 2019. **Evening Max \$8.00 (4pm - 7 am); MP and Other MP rate increase	11%	11%	4%	7%	5%	1%	7%	2%	0%	\$260.00; \$120.00 other	66%	19%	15%	94,636	-63%	-84%
150	40 Larch St	332	\$2.50	\$9.00	\$6.00		\$135.00	0	1	\$180.00 other	Rates in line with nearby facility at CP68 (20 St. Andrew St)	20%	19%	10%	13%	9%	3%	11%	4%	2%		79%	13%	8%	118,832	-60%	-58%

<i>Car park closed since last RR</i>	<i>New Car Park since last RR</i>
<b>Updated rate since last RR</b>	<b>Revenue / transactions down since last year</b>

**APPENDIX 1 - PROPOSED RATE CHANGES AND JUSTIFICATIONS**

CP#	Car Park Address	Space Count	1/2 Hour Rate	Day Max (7am - 6pm)	Evening Max (6pm-7am)	Other Rate	Monthly Permit				Comments	Usage - Weekday			Usage - Sat			Usage - Sun			Proposed Changes	Car Entries			May 2021 Year to Date Rev	May Year Over Year % Change 20/21 Rev	May Year Over Year % Diff 20/21 Transactions
							Rate	Quota	Issued	Tenant Rate / Other Rate		Peak Usage	All	Comm.	Peak Usage	All	Comm.	Peak Usage	All	Comm.	Monthly Rate	Day %	Afternoon %	Night %			
161	30 St. Claire Ave W	176	\$2.50	\$20.00* / \$4.00**	\$6.00 / \$4.00***		\$270.00	5	3		*Incremental increase Day Max up to \$22.00 approved 2019 PR; **Weekend day Max \$4.00; *** Weekend Evening Max \$4.00. MP only available to tenants at 30 St Clair Avenue must go through property management hours of operations attended from 7 am - 11 pm; MP rate increase; Lot temporarily closed due to construction in area.	10%	8%	4%	4%	3%	2%	3%	2%	2%	\$285.00	68%	25%	7%	41,608	-57%	-68%
171	730 Mount Pleasant Rd	53	\$2.00	\$14.00	\$9.00		\$190.00	0	11		Pay on Foot Lot; No cashier; MP rate increase	69%	52%	39%	39%	26%	20%	37%	20%	20%	\$200.00	70%	11%	18%	65,235	5%	-8%
215	74 Yorkville Ave	175	\$4.00*	\$30.00	\$10.00 / \$9.00 / \$8.00**		\$450.00	0	0		*Incremental increase 1/2 hour rate approved up to \$5.00 2019 PR. **Sat evening Max \$9.00, Sun Evening Max \$8.00	39%	24%	5%	31%	15%	1%	27%	8%	1%		73%	18%	9%	422,103	-43%	-45%
262	10 Soho Street	121	\$3.00	\$20.00*	\$8.00		\$300.00	4	5		Opened August 6, 2020. MP are special arrangement for Parallax Investment Corp at \$0.00	17%	14%	7%	12%	9%	5%	12%	6%	4%		62%	23%	15%	60,832		
286	51 Dockside Dr	264	\$2.50	\$18.00 * / \$7.50**	\$6.00		\$235.00	0	43		Controlled and uncontrolled facility; Mobile payments only available for eight spaces serviced by Dg4 electric car charging station; *Incremental rate increase up to \$20.00 approved 2019 PR; **Weekend Day Max \$7.50; MP rate increase	34%	32%	23%	25%	20%	14%	25%	23%	14%	\$250.00	68%	12%	21%	66,488	124%	82%
304	9 Wellesley Street West	134	\$3.00	\$15.00	\$8.00			0	0		Car Park opened in May 10, 2021; Establish MP rate									\$225.00				11,467			
404	95 Beecroft Rd	328	\$2.50	\$14.00 / \$4.50*	\$6.00 / \$4.50**		\$250.00	0	21	\$250.00 other	Controlled and uncontrolled facility. Permit parkers park in lower attended section of garage. *Weekend Day Max \$4.50. **Weekend evening Max \$4.50	16%	16%	13%	7%	6%	6%	7%	6%	5%		85%	8%	7%	65,612	-68%	-52%
410	100 Beecroft Rd.	176	\$2.50	\$14.00	\$5.00		\$210.00	0	0		Pay on Foot Lot, no cashier.	10%	5%	2%	3%	1%	0%	3%	6%	2%		82%	13%	5%	30,044	-81%	43%

<i>Car park closed since last RR</i>	<i>New Car Park since last RR</i>
<b>Updated rate since last RR</b>	<b>Revenue / transactions down since last year</b>

**APPENDIX 1 - PROPOSED RATE CHANGES AND JUSTIFICATIONS**

**UNCONTROLLED FACILITIES**

CP#	Car Park Address	Space Count	1/2 Hour Rate	Day Max (7am - 6pm)	Evening Max (6pm-7am)	Other Rate	Monthly Permit				Comments	Usage - Weekday			Usage - Sat			Usage - Sun			Proposed Changes	Car Entries			May 2021 Year to Date Rev	May Year Over Year % Change 20/21 Rev	May Year Over Year % Diff 20/21 Transactions
							Rate	Quota	Issued	Tenant Rate / Other Rate		Peak Usage	All	Comm.	Peak Usage	All	Comm.	Peak Usage	All	Comm.		Monthly Rate	Day %	Afternoon %			
3	13 Isabella St.	32	\$3.00	No Day Max / \$7.00*	\$10.00 / \$5.00**		\$160.00	0	0		*Day Max Sunday \$7.00; **Weekend Evening Max \$5.00; MP rate increase	50%	31%	9%	47%	22%	3%	53%	0%	0%	\$170.00	68%	20%	12%	72,768	11%	-3%
13	20 Delisle Ave	37	\$3.00	No Day Max / \$5.00*	\$6.00 / \$4.00**			0	0		Controlled and uncontrolled facility; *Weekend \$4.00 Day Max; **Weekend \$4.00 evening Max; MP rate applied to controlled portion of facility; YTD information contained in the controlled portion of this table.	57%	16%	3%	24%	8%	0%	24%	14%	3%		76%	20%	4%			
17	716 Pape Ave.	74	\$1.75	\$9.00	\$5.00		\$130.00	0	0		MP rate increase	54%	34%	19%	30%	14%	8%	14%	26%	22%	\$140.00	75%	20%	5%	55,404	-24%	-17%
18	351 Keele St.	72	\$1.50	\$6.00	\$4.00		\$90.00	0	20			56%	50%	44%	39%	33%	28%	33%	10%	3%		76%	12%	12%	28,933	-7%	-11%
19	385 Pacific Ave.	67	\$1.50	\$9.00	\$4.00		\$80.00	0	17		MP rate increase	53%	40%	32%	44%	32%	26%	37%	17%	6%	\$85.00	62%	26%	12%	32,557	-40%	-41%
20	101 Cedarvale Ave.	35	\$1.75	\$8.00	\$3.00		\$70.00	0	7		MP rate increase	30%	25%	25%	30%	22%	22%	25%	6%	0%	\$75.00	50%	20%	30%	7,809	-56%	-50%
21	72 Amroth Ave.	50	\$1.75	\$7.00	\$3.00		\$70.00	0	5		MP rate increase	36%	30%	26%	34%	24%	16%	22%	26%	3%	\$75.00	75%	13%	13%	14,583	-44%	-53%
28	670 Pape Ave.	68	\$1.75	\$8.00	\$5.00		\$120.00	0	10			53%	41%	31%	41%	28%	21%	31%	12%	6%		72%	20%	8%	39,589	-18%	-17%
41	7 Norton Ave.	62	\$1.75	\$9.00	\$4.00		\$135.00	0	0			44%	24%	13%	34%	21%	11%	19%	7%	3%		74%	18%	8%	44,625	-16%	-12%
44	14 Fuller Ave.	42	\$1.50	\$8.00	\$5.00		\$65.00	0	14		MP rate increase	60%	50%	43%	62%	48%	39%	58%	7%	6%	\$70.00	60%	17%	23%	34,607	36%	4%
45	111 Broadview Ave.	92	\$1.25	No Day Max	\$5.00		\$180.00	0	12		MP rate increase	30%	26%	16%	35%	28%	14%	29%	7%	6%	\$190.00	64%	23%	13%	50,701	-51%	-57%
47	125 Burnaby Blvd.	155	\$1.50	No Day Max	\$5.00		\$180.00	0	10		MP rate increase	55%	39%	16%	26%	15%	8%	14%	7%	6%	\$190.00	78%	18%	4%	95,034	-51%	11%
48	85 Lee Ave.	68	\$1.50	\$9.00	\$5.00		\$135.00	0	0			65%	38%	15%	93%	57%	10%	103%	7%	6%		61%	28%	11%	62,391	15%	7%
51	365 Lippincott St.	136	\$2.00	\$12.00	\$10.00		\$145.00	0	5		MP rate increase	101%	90%	82%	24%	15%	8%	16%	24%	21%	\$155.00	81%	8%	11%	163,859	-26%	-38%
53	803 Richmond St. W.	48	\$2.00	No Day Max / \$4.50*	\$10.00 / \$4.50**		\$130.00	0	0		*Day Max Sunday \$4.50; **Weekend Evening Max \$4.50; MP rate increase	42%	31%	6%	79%	50%	4%	115%	0%	0%	\$140.00	49%	26%	26%	64,285	-9%	2%
55	23/23R Bedford Park Ave.	42	\$1.00	No Day Max	\$3.00		\$240.00	0	0			36%	29%	10%	21%	7%	0%	21%	100%	27%		73%	17%	10%	20,624	-34%	-27%
64	265 Durie St.	144	\$1.50	\$9.00	\$6.00		\$140.00	0	20			61%	42%	30%	60%	29%	22%	31%	8%	0%		69%	26%	5%	112,532	-15%	-5%
71	35 Bellevue Ave.	86	\$2.50	\$22.00*	\$6.00	**	\$180.00	0	3		*Incremental increase Day Max approved up to \$24.00 2018 PR; **No Day Max Sat/Sun; MP rate increase	53%	37%	14%	62%	19%	4%	54%	64%	60%	\$190.00	74%	18%	8%	128,289	1%	19%
78	35 Erindale Ave.	94	\$2.00	\$17.00	\$7.00		\$180.00	0	2		MP rate increase	49%	28%	13%	34%	16%	8%	12%	0%	0%	\$190.00	75%	20%	4%	100,507	-35%	-30%
79	405 Sherbourne St.	91	\$2.00	\$10.00	\$6.00 / \$10.00*		\$125.00	0	0		*Mon-Thurs Evening Max \$6.00 (7pm - 7am); Fri-Sat Evening max \$10.00 (7pm - 7am); MP rate increase	125%	112%	81%	42%	32%	19%	32%	0%	0%	\$135.00	84%	6%	11%	101,321	-11%	24%
80	400 Keele St.	35	\$1.25	\$5.00	\$3.00		\$70.00	0	2		MP rate increase	42%	36%	25%	45%	33%	22%	27%	0%	0%	\$75.00	75%	10%	15%	12,315	-2%	-11%
81	695 Lansdowne Ave.	16	\$1.50	\$7.00	\$3.00		\$85.00	0	9	\$90.00 other	Lot currently under construction due to TTC 'Easier Access' project, space count adjusted; MP and Other rate increase	126%	101%	89%	120%	76%	58%	101%	0%	0%	\$90.00; \$95.00 other	54%	23%	23%	14,109	-44%	28%
82	9 Emerson Ave.	49	\$1.50	\$5.00	\$3.00		\$65.00	0	6		MP rate increase	57%	40%	30%	65%	40%	22%	51%	0%	0%	\$70.00	60%	17%	23%	24,111	-8%	2%
84	9 Salem Ave.	33	\$1.50	\$7.00	\$2.50		\$90.00	0	4		MP rate increase	70%	58%	49%	55%	43%	31%	31%	1%	0%	\$95.00	74%	12%	15%	22,123	-14%	15%
85	557 Palmerston Ave.	55	\$2.00	\$12.00	\$6.00		\$180.00	0	0			109%	84%	71%	45%	22%	11%	25%	1%	0%		69%	17%	14%	85,536	-3%	-19%
87	14 Arundel Ave.	73	\$1.50*	No Day Max	\$6.00		\$130.00	0	0		*Incremental increase half hour rate approved up to \$2.00 2018 RR; MP rate increase	15%	5%	3%	15%	4%	1%	11%	1%	0%	\$140.00	15%	25%	18%	15,759	-88%	-57%
88	25 Ferrier Ave.	46	\$1.75	\$9.00*	\$6.00		\$135.00	0	0		*Incremental increase Day Max Rate approved up to \$10.00 2018 RR.	39%	24%	13%	37%	20%	7%	26%	1%	0%		60%	25%	15%	27,551	-46%	-43%
89	20 Eaton Ave.	59	\$1.50	\$9.00	\$4.00		\$95.00	0	6		MP rate increase	39%	30%	20%	20%	15%	12%	18%	1%	0%	\$100.00	80%	15%	5%	20,771	-29%	-20%
90	17 Eaton Ave.	30	\$1.50	\$9.00	\$4.00		\$70.00	0	8		MP rate increase	68%	45%	41%	58%	38%	28%	48%	1%	0%	\$75.00	68%	20%	12%	18,471	-16%	-13%
91	265 Armadale Ave.	144	\$1.50	\$8.00	\$6.00		\$140.00	0	8			48%	33%	21%	25%	17%	10%	13%	1%	0%		81%	16%	3%	84,276	-21%	-8%

Car park closed since last RR	New Car Park since last RR
Updated rate since last RR	Revenue / transactions down since last year

**APPENDIX 1 - PROPOSED RATE CHANGES AND JUSTIFICATIONS**

CP#	Car Park Address	Space Count	1/2 Hour Rate	Day Max (7am - 6pm)	Evening Max (6pm-7am)	Other Rate	Monthly Permit				Comments	Usage - Weekday			Usage - Sat			Usage - Sun			Proposed Changes	Car Entries			May 2021 Year to Date Rev	May Year Over Year % Change 20/21 Rev	May Year Over Year % Diff 20/21 Transactions
							Rate	Quota	Issued	Tenant Rate / Other Rate		Peak Usage	All	Comm.	Peak Usage	All	Comm.	Peak Usage	All	Comm.		Day %	Afternoon %	Night %			
93	675 Manning Ave.	49	\$2.00	\$10.00	\$6.00			0	0			61%	49%	35%	49%	27%	12%	27%	1%	0%		69%	17%	14%	39,167	-41%	-40%
96	10 Portland St	37	\$2.50	\$20.00	\$6.00		\$300.00	0	0			97%	86%	73%	73%	27%	11%	70%	1%	0%		69%	11%	20%	89,391	40%	15%
104	745 Ossington Ave.	46	\$2.00	\$12.00*	\$8.00		\$85.00	0	4	\$125.00 other	*Incremental increase Day Max rate approved up to \$12.00 2019 RR; MP and Other rate increase	42%	29%	20%	55%	35%	20%	35%	5%	2%	\$90.00; \$140 other	64%	20%	16%	32,936	-32%	-23%
106	15 Denison Ave.	120	\$2.00	No Day Max	\$8.00		\$200.00	0	1		MP rate increase	23%	18%	4%	24%	12%	2%	16%	5%	2%	\$215.00	63%	23%	14%	92,640	-37%	-41%
107	251 MacPherson Ave.	40	\$1.00	No Day Max	\$3.00		\$155.00	0	16	\$115.00 other	Other permit rate applies to Rathnelly Building Tenants; MP and Other rate increase	77%	72%	57%	50%	40%	35%	50%	5%	2%	\$165.00; \$125.00 other	76%	9%	15%	37,373	19%	11%
109	51 Aberdeen Ave.	35	\$2.00	\$12.00	\$8.00		\$140.00	0	9		MP rate increase	72%	63%	58%	43%	38%	29%	43%	5%	2%	\$150.00	73%	12%	15%	21,696	-25%	-23%
110	1612 Danforth Ave.	22	\$1.75	\$10.00	\$5.00		\$130.00	0	0	\$204.00 other	MP rate increase	86%	59%	50%	27%	14%	5%	18%	10%	10%	\$140.00	75%	18%	8%	22,585	-4%	-22%
111	79 Clinton St	78	\$1.75	\$9.00	\$8.00 / \$10.00*		\$180.00	0	9		*Evening Max \$8.00 Sun-Thurs (6pm - 7am). \$10.00 Fri-Sat (6pm - 7 am)	49%	44%	39%	17%	13%	12%	13%	10%	10%		87%	9%	4%	39,284	-31%	-30%
116	255 Kennedy Ave.	56	\$1.50	No Day Max	\$6.00		\$355.00	0	1		MP rate increase	43%	18%	5%	57%	19%	3%	41%	10%	10%	\$365.00	66%	25%	9%	40,513	-42%	-28%
130	7 Bartlett Ave.	37	\$1.00	No Day Max	\$3.00		\$95.00	0	4		MP rate increase	49%	25%	17%	74%	25%	14%	41%	2%	0%	\$100.00	64%	26%	10%	24,745	-13%	3%
131	912 Eglinton Ave. W.	26	\$1.25	No Day Max	\$5.00		\$300.00	0	0		In proximity to Eglinton Crosstown, rates are not being adjusted	112%	77%	31%	42%	12%	4%	38%	2%	0%		70%	21%	9%	31,767	-13%	50%
133	20 Prescott Ave.	7	\$1.00	\$5.00*			\$75.00	0	0		*24 hour rolling max	129%	43%	29%	100%	43%	29%	100%	2%	0%		42%	25%	33%	3,764	-11%	3%
137	77 Gough Ave.	17	\$1.75	\$9.00	\$6.00		\$135.00	0	0		MP rate assigned for reference	53%	24%	12%	53%	18%	12%	29%	2%	0%		71%	21%	8%	10,191	-43%	-37%
139	6 Sherwood Ave.	45	\$2.00	\$13.00* / No Day Max	\$7.00		\$195.00	0	3	\$120.00 other	*Incremental increase Day Max approved up to \$14.00 2019 PR; **No Day Max Sat/Sun/Hol. Other permit applies to weekday permit; MP other rate increase	28%	21%	16%	16%	10%	5%	16%	2%	0%	\$130.00 other	70%	15%	15%	18,407	-56%	-60%
141	141 Greenlaw Ave.	54	\$1.00	No Day Max	\$4.00		\$95.00	0	8	\$50.00 other	Other permit rate applies to overnight permit; MP and Other rate increase	36%	25%	16%	47%	27%	16%	25%	14%	3%	\$100.00; \$55.00 other	67%	20%	13%	23,268	-18%	-12%
142	31 Langford Ave.	27	\$1.50	\$9.00*	\$5.00		\$155.00	0	12		*Incremental increase Day Max approved up to \$10.00 2019 RR.	87%	76%	65%	65%	54%	47%	50%	14%	3%		72%	14%	14%	22,645	4%	-2%
143	265 Willard Ave.	90	\$1.50	No Day Max	\$6.00		\$155.00	0	6		*Weekday MP rate	36%	12%	8%	44%	12%	8%	23%	14%	3%	\$165.00	67%	30%	3%	48,550	-37%	-20%
144	376 Clinton Ave.	34	\$2.00	No Day Max	\$6.00		\$480.00	0	0			35%	9%	6%	38%	15%	3%	29%	15%	0%		66%	21%	14%	29,610	-43%	-47%
146	573 Gerrard St. E.	36	\$1.25	\$8.00 / No Day Max*	\$5.00		\$120.00	0	6		*No Day Max Sat and Sun 7am-6pm; Special arrangement MP currently issued	74%	58%	49%	66%	41%	19%	66%	38%	19%		59%	18%	23%	23,286	16%	-2%
149	12 Woodcrest Ave.	35	\$1.50	\$8.00	\$4.00		\$70.00	0	15		MP rate increase	69%	57%	54%	49%	40%	37%	43%	40%	37%	\$75.00	71%	19%	10%	13,801	7%	10%
152	25 Glenforest Rd.	26	\$1.50	No Day Max	\$5.00		\$360.00	0	0		No Day Max Mon-Sun (9am-6pm); Evening Max \$5.00 (6pm-9am)	15%	8%	4%	12%	8%	0%	12%	8%	0%		55%	27%	18%	5,859	-77%	-72%
155	995 Eglinton Ave. W.	33	\$1.25	\$7.00	\$6.00		\$140.00	0	4		In proximity to Eglinton Crosstown and as a result, rates are to be held	116%	101%	101%	58%	49%	40%	22%	16%	13%		77%	14%	9%	11,544	-56%	54%
156	18 Ferrier Ave.	23	\$1.75	\$9.00*	\$6.00		\$135.00	0	0		*Incremental increase Day Max approved up to \$10.00 2018 RR	30%	17%	9%	30%	13%	4%	22%	4%	0%		67%	17%	17%	8,512	-58%	-54%
157	709 Millwood Rd	20	\$1.00	No Day Max	\$4.00		\$240.00	0	0			35%	15%	10%	40%	10%	35%	20%	10%	0%		60%	30%	10%	8,194	-33%	-39%
158	1325 Queen St. W.	32	\$1.50	\$9.00	\$5.00		\$100.00	0	3		MP rate increase	58%	45%	36%	54%	42%	23%	39%	26%	20%	\$110.00	65%	19%	16%	21,769	-37%	-36%
164	453 Spadina Rd.	55	\$1.50	\$14.00	\$5.00		\$210.00	0	0			67%	33%	18%	33%	13%	7%	22%	9%	5%		79%	17%	4%	45,634	-18%	-7%
167	18 Ossington Ave.	20	\$2.00	No Day Max	\$7.00		\$90.00	0	0		MP rate increase	45%	35%	20%	60%	20%	5%	35%	10%	0%	\$95.00	61%	21%	18%	20,036	-49%	-51%
168	144A Harrison St.	79	\$1.50	\$8.00	\$4.00		\$80.00	0	18		MP rate increase	54%	47%	38%	44%	35%	26%	33%	26%	22%	\$85.00	72%	13%	15%	45,336	1%	-3%
170	117 Hammersmith Ave.	29	\$1.50	\$9.00	\$5.00		\$135.00	0	3	\$95.00 other	Other MP applicable weekdays only; Other MP rate increase	57%	36%	26%	57%	39%	19%	57%	36%	12%	\$100.00 other	59%	29%	12%	16,960	-12%	-16%
173	737 Rhodes Ave.	24	\$1.50	No Day Max	\$1.00		\$100.00	0	1		MP rate increase	33%	12%	12%	20%	16%	3%	12%	8%	3%	\$110.00	72%	21%	7%	10,739	-40%	-38%

Car park closed since last RR	New Car Park since last RR
Updated rate since last RR	Revenue / transactions down since last year

**APPENDIX 1 - PROPOSED RATE CHANGES AND JUSTIFICATIONS**

CP#	Car Park Address	Space Count	1/2 Hour Rate	Day Max (7am - 6pm)	Evening Max (6pm-7am)	Other Rate	Monthly Permit				Comments	Usage - Weekday			Usage - Sat			Usage - Sun			Proposed Changes Monthly Rate	Car Entries			May 2021 Year to Date Rev	May Year Over Year % Change 20/21 Rev	May Year Over Year % Diff 20/21 Transactions
							Rate	Quota	Issued	Tenant Rate / Other Rate		Peak Usage	All	Comm.	Peak Usage	All	Comm.	Peak Usage	All	Comm.		Day %	Afternoon %	Night %			
174	151 Hiawatha Ave.	50	\$1.25	\$7.00	\$6.00		\$105.00	0	0		During school year (Labour Day to Canada Day) teacher parking during weekdays and lot operational Mon to Thurs 6pm-6am, Fri 6pm-Mon 6am. Day Max applicable Sat/Sun/Hol closed Mon-Fri, closed Mon-Fri 2am-6pm.  Summer period (Canada Day to Labour Day) car park operated 24/7.  Information presented herein is based on school year operation.	6%	4%	4%	8%	4%	2%	6%	2%	2%		18%	9%	73%	6,631	99%	-40%
178	650 Mount Pleasant Rd	68	\$2.00	\$11.00	\$6.00		\$140.00	0	10	\$65.00 tenant	MP and Tenant rate increase	62%	54%	49%	32%	28%	25%	21%	19%	16%	\$150.00; \$70.00 tenant	83%	8%	9%	33,900	-47%	1%
179	653 Gerrard St. E.	30	\$1.25	No Day Max	\$5.00		\$300.00	0	0			33%	10%	3%	60%	7%	0%	43%	10%	3%		57%	34%	9%	13,784	-20%	-13%
180	268 Rhodes Ave.	39	\$1.25	\$5.00 / No Day Max*	\$5.00		\$75.00	0	3	\$55.00 other	*Sat/Sun No Day Max; Other MP rate applicable weekdays only; Other rate increase	47%	32%	24%	39%	24%	11%	34%	19%	11%	\$60.00 tenant	57%	27%	17%	18,979	11%	-17%
183	166 Woodbine Ave.	21	\$1.00	\$5.00	\$3.00		\$80.00	0	0			119%	90%	71%	119%	67%	33%	114%	67%	19%		68%	16%	16%	15,513	24%	33%
184	192 Boardwalk Dr.	24	\$1.00	\$5.00	\$3.00		\$80.00	0	0			79%	58%	42%	67%	46%	13%	104%	63%	8%		75%	11%	14%	10,450	39%	46%
185	116 Joseph Duggan Rd.	24	\$1.00	\$5.00	\$3.00		\$85.00	0	1			49%	24%	16%	58%	41%	12%	83%	49%	16%		63%	19%	19%	6,743	5%	-1%
186	118 Sarah Ashbridge Ave.	24	\$1.00	\$5.00	\$3.00		\$80.00	0	0			38%	13%	8%	58%	21%	8%	100%	54%	4%		50%	25%	25%	5,087	72%	53%
187	116 Winners Cir.	10	\$1.00	\$5.00	\$3.00		\$80.00	0	0			60%	30%	20%	110%	70%	20%	110%	70%	10%		50%	31%	19%	3,501	27%	14%
188	157 Beatrice St.	18	1.75 *	\$10.00**			\$150.00	0	0		*Incremental increase Half Hour rate approved up to \$2.00 2019 RR; **8 hour rolling max	56%	39%	17%	61%	33%	11%	33%	17%	6%		65%	20%	15%	12,372	-25%	-22%
195	15 Price St.	70	\$1.75*	No Day Max	\$6.00		\$205.00	0	0		*Incremental increase Half Hour rate approved up to \$2.00 2019 RR	41%	21%	4%	27%	6%	1%	19%	6%	0%	\$220.00	79%	18%	4%	52,731	-37%	-21%
200	1167 Eastern Ave.	66	\$1.00	\$4.00 / \$3.00*	\$4.00 / \$3.00**		\$60.00	0	3		*Weekend Day Max \$3.00 ** Weekend Evening Max \$3.00. Usage highly fluctuates based on season.	17%	7%	5%	57%	32%	8%	107%	72%	7%		36%	27%	36%	9,192	62%	37%
202	1141 Eastern Ave.	18	\$1.00	\$4.00	\$4.00 / \$3.00*		\$55.00	0	0		*Weekend Evening Max \$3.00; MP rate increase	44%	28%	28%	67%	28%	6%	111%	89%	11%	\$60.00	64%	18%	18%	2,917	-63%	-56%
204	1117 Dundas St. W.	37	\$1.50	No Day Max	\$7.00		\$130.00	0	2		MP rate increase	45%	26%	18%	48%	26%	4%	39%	26%	10%	\$140.00	57%	30%	13%	29,988	-36%	-43%
205	465 Huron St.	15	\$2.50	\$17.00	\$6.00		\$65.00	0	5		MP rate increase	67%	47%	47%	60%	47%	40%	53%	40%	33%	\$70.00	69%	13%	19%	14,490	-41%	-28%
212	363 Adelaide St. W.	22	\$4.00	No Day Max / \$6.50*	\$11.00 / \$6.00**		\$960.00	0	0		**Weekend Day Max \$6.50; **Sunday Evening Max \$6.00	64%	32%	9%	155%	109%	27%	118%	91%	36%		66%	18%	16%	62,292	-16%	1%
216	205 McCaul St.	39	\$3.00	No Day Max	\$8.00		\$720.00	0	0			103%	67%	5%	44%	18%	0%	21%	8%	3%		88%	10%	2%	128,784	30%	51%
217	1445 Bathurst St	48	\$1.50	\$10.00	\$3.00		\$150.00	0	0			98%	81%	48%	56%	38%	17%	40%	19%	10%		74%	13%	13%	55,296	62%	44%
218	3354 Dundas St. W.	11	\$1.25	\$6.00	\$3.00		\$65.00	0	0		MP rate increase	118%	100%	91%	91%	73%	64%	100%	73%	55%	\$75.00	71%	18%	12%	8,469	67%	37%
219	85 Richmond St. E.	20	\$2.50	No Day Max / \$5.50*	\$5.00		\$600.00	0	0		*Day Max Sunday \$5.50	75%	50%	10%	45%	15%	0%	50%	30%	10%		75%	16%	10%	39,274	-2%	27%
220	789 St Clair Ave W	18	\$1.00	No Day Max	\$5.00		\$240.00	0	0			50%	28%	11%	50%	28%	11%	22%	17%	0%		69%	21%	10%	11,892	-38%	-35%

<i>Car park closed since last RR</i>	<i>New Car Park since last RR</i>
<b>Updated rate since last RR</b>	<b>Revenue / transactions down since last year</b>

**APPENDIX 1 - PROPOSED RATE CHANGES AND JUSTIFICATIONS**

CP#	Car Park Address	Space Count	1/2 Hour Rate	Day Max (7am - 6pm)	Evening Max (6pm-7am)	Other Rate	Monthly Permit				Comments	Usage - Weekday			Usage - Sat			Usage - Sun			Proposed Changes Monthly Rate	Car Entries			May 2021 Year to Date Rev	May Year Over Year % Change 20/21 Rev	May Year Over Year % Diff 20/21 Transactions
							Rate	Quota	Issued	Tenant Rate / Other Rate		Peak Usage	All	Comm.	Peak Usage	All	Comm.	Peak Usage	All	Comm.		Day %	Afternoon %	Night %			
223	1501 Yonge St	37	\$2.00	No Day Max / \$4.00*	\$6.00 / \$4.00**		\$480.00	0	0		*Weekend Day Max \$4.00. **Weekend Evening Max \$4.00. MP rate assigned for reference. Usage highly fluctuates based on season.	62%	27%	8%	68%	46%	14%	41%	24%	14%		69%	22%	9%	43,686	-4%	14%
224	34 Hanna Ave	184	\$2.00	\$14.00*	\$8.00	\$20.00**	\$105.00**	0	0	\$95.00 other	*Incremental increase Day Max approved up to \$20.00 2019 RR; **Event rate; ***MP rate approved up to \$115.00 2018 RR; Other rate increase	24%	19%	12%	12%	8%	3%	9%	5%	1%	\$100.00 other	75%	16%	9%	115,620	-40%	-32%
225	80 Clinton St	25	\$1.50	\$6.00	\$8.00		\$90.00	0	0		During school year (Labour Day to Canada Day) teacher parking during weekdays and lot operational Mon to Thurs 6pm-6am, Fri 6pm-Mon 6am. Day Max applicable Sat/Sun/Hol closed Mon-Fri, closed Mon-Fri 2am-6pm.  Summer period (Canada Day to Labour Day) car park operated 24/7  Information presented herein is based on school year operation	8%	0%	0%	16%	12%	4%	20%	8%	8%		0%	33%	67%	2,377	-82%	-81%
226	646 St Clair Ave W	15	\$1.50	\$8.00	\$5.00		\$130.00	0	2			44%	37%	24%	37%	31%	24%	31%	11%	11%		60%	20%	20%	6,439	-36%	-48%
227	105 Spadina Ave	14	\$4.00	No Day Max	\$11.00		\$960.00	0	0		*Weekend Day Max \$6.50 **Sunday Evening Max \$6.00	71%	36%	14%	179%	129%	36%	129%	93%	36%		70%	16%	14%	47,886	-25%	-3%
228	11 Kenwood Ave	24	\$1.50	\$10.00	\$4.00		\$150.00	0	0			50%	33%	21%	33%	17%	8%	29%	13%	8%		65%	17%	17%	15,783	-23%	-24%
229	110 Dovercourt Rd	8	\$1.50	No Day Max	\$7.00		\$360.00	0	0			50%	38%	25%	38%	25%	13%	25%	25%	0%		63%	25%	13%	4,680	-37%	-44%
230	31A Parliament St	208	\$2.25	\$18.00*			\$200.00**	100	86	\$145 other ***	Rates are not set by TPA and must be given the go-ahead by the property owner;. *10 hour rolling max; ** MP sold for 7 days a week; *** MP sold for weekdays; Any MP sold above quota must be authorized by property owner; MP and Other rate increase	50%	45%	38%	50%	41%	35%	48%	39%	34%	\$215.00; \$155.00 other	76%	16%	8%	136,705	-39%	-20%
231	19 Spadina Rd	60	\$2.00	\$13.00 / \$5.00*	\$7.00 / \$5.00**		\$155.00	0	1		*Weekend day Max \$5.00; **Weekend Evening Max \$5.00; MP rate increase	41%	35%	23%	33%	25%	15%	28%	21%	13%	\$165.00	71%	16%	14%	37,538	-50%	-44%
233	44 Parliament St	122	\$2.50	\$18.00	\$9.00		\$160.00	0	4	\$70.00 other	Other permit rate overnight permit; Hold MP rates as Car Park is scheduled to close on September 29, 2021	49%	44%	32%	22%	16%	7%	17%	10%	5%		79%	10%	11%	142,566	-34%	-38%
235	2201 Dundas St W	10	\$1.00	No Day Max	\$6.00		\$240.00	0	0			40%	30%	20%	60%	20%	10%	40%	20%	10%		50%	29%	21%	5,734	-31%	-25%
238	9 Madison Ave	35	\$2.00	\$12.00	\$6.00		\$180.00	0	0		Car park closed on December 18, 2020																
240	700 St Clair Ave W	18	\$1.50	\$8.00	\$5.00		\$120.00	0	0			50%	28%	17%	39%	17%	11%	28%	11%	6%		68%	24%	8%	9,835	-47%	-42%
241	9 Bonar Pl	34	\$1.00	\$7.00*			\$75.00	0	2		*24 hour rolling max; MP rate increase	69%	25%	16%	64%	22%	11%	61%	16%	11%	\$80.00	52%	20%	28%	18,165	4%	-15%
243	115 Unwin Ave	123	\$1.00	\$6.00*			\$90.00	0	0		Seasonal lot not in operation from November to April. *Day Max 6 hour rolling max (6:00am-11:00pm)	4%	2%	0%	24%	12%	0%	49%	30%	0%		33%	33%	33%	7,988		
244	1439 Danforth Ave	18	\$1.50	\$10.00	\$6.00		\$110.00	0	1			54%	38%	27%	43%	27%	21%	38%	21%	16%	\$120.00	71%	19%	10%	11,889	-45%	-46%
246	31 Blackthorn Ave	37	\$1.00	\$5.00*			\$75.00	17	12		*24 hour rolling max	50%	34%	31%	56%	31%	31%	53%	31%	29%		40%	30%	30%	7,341	-23%	-20%
248	136 Broadview Ave	22	\$1.75*	No Day Max	\$5.00		\$420.00	0	0		*Incremental increase to half hour rate approved up to \$2.00 2019 RR	23%	14%	5%	36%	14%	0%	32%	14%	0%		58%	17%	25%	10,648	-57%	-59%
251	201 Claremont St	43	\$1.00	No Day Max	\$5.00		\$80.00	0	2		MP rate increase	55%	46%	15%	62%	41%	8%	53%	32%	6%	\$85.00	61%	22%	16%	36,055	-12%	-9%
252	154 Westmount Ave	14						0	0		Car park closed on October 9, 2020														-		

Car park closed since last RR	New Car Park since last RR
Updated rate since last RR	Revenue / transactions down since last year

**APPENDIX 1 - PROPOSED RATE CHANGES AND JUSTIFICATIONS**

CP#	Car Park Address	Space Count	1/2 Hour Rate	Day Max (7am - 6pm)	Evening Max (6pm-7am)	Other Rate	Monthly Permit				Comments	Usage - Weekday			Usage - Sat			Usage - Sun			Proposed Changes	Car Entries			May 2021 Year to Date Rev	May Year Over Year % Change 20/21 Rev	May Year Over Year % Diff 20/21 Transactions
							Rate	Quota	Issued	Tenant Rate / Other Rate		Peak Usage	All	Comm.	Peak Usage	All	Comm.	Peak Usage	All	Comm.		Day %	Afternoon %	Night %			
256	1624 Queen St W	33	\$1.25	\$7.00	\$5.00			0	0			67%	48%	27%	73%	48%	18%	61%	33%	15%		62%	19%	19%	31,112	25%	24%
259	6A Spadina Rd	39	\$2.00	\$12.00	\$6.00		\$250.00	0	1		Overnight residential parking. 7 stalls reserved, non-chargeable, for property tenant owner's tenant's.	51%	35%	23%	35%	23%	10%	28%	15%	7%		71%	18%	10%	32,445	-44%	-43%
260	94 Northcliffe Blvd	13	\$1.25	\$7.00	\$4.00		\$105.00	0	0			38%	31%	23%	38%	23%	15%	31%	15%	15%		57%	21%	21%	5,339	-29%	-28%
261	45 Abell St	124	\$1.75	\$12.00	\$6.00 / \$12.00*		\$80.00	0	1		*Evening Max Mon-Wed \$6.00 7pm-7am, Thurs-Sun \$12.00 7pm-7am; MP rate increase	26%	19%	12%	25%	15%	6%	23%	12%	5%	\$85.00	57%	18%	25%	74,559	-36%	-26%
263	130 Elizabeth St	28	\$4.00	No Day Max / \$8.50*	No Evening Max / \$7.00**		\$960.00	0	0		*Weekend day Max \$8.50. **Weekend Evening Max \$7.00	100%	43%	4%	100%	57%	18%	71%	36%	14%		87%	10%	3%	101,882	25%	38%
266	250 Fort York Blvd	50	\$1.00	\$12.00*		**	\$180.00	0	0		*Rolling max 6 hours; **Event rates to be determined on an event-by-event basis	36%	28%	12%	34%	18%	2%	26%	14%	0%		62%	14%	24%	45,802	1%	-20%
267	70 Distillery Ln	127	\$2.25	\$18.00*			\$215.00**	0	18	\$145.00 other	Rates are not set by TPA and must be given the go-ahead by the property owner ; *10 hour rolling max; ** MP sold for 7 days a week; *** MP sold for weekdays; Any MP sold above quota must be authorized by property owner; MP rate and Other rate increase	44%	35%	29%	28%	22%	14%	22%	17%	12%	\$230.00; \$155.00 other	69%	11%	20%	110,378	9%	-7%
268	271 Front St E	83	\$2.50	\$16.00* / \$7.50**	\$9.00		\$130.00	0	0		*Incremental increase Day max up to \$18.00 2019 RR; **Weekend Day Max \$7.50; Hold MP rate as Car Park scheduled to close on September 24, 2021	36%	33%	28%	17%	13%	7%	11%	7%	4%		82%	9%	9%	48,162	-46%	-40%
269	1010 Yonge St	48	\$1.50	\$12.00*	\$5.00		\$180.00	0	0		*Incremental increase Day max up to \$15.00 2019 RR	98%	81%	67%	52%	25%	6%	44%	25%	6%		71%	15%	14%	64,955	23%	26%
270	180 Spadina Avenue	34	\$3.00	No Day Max	\$8.00			0	0		Car Park opened in April 13, 2021; Establishment of MP rate	21%	9%	3%	24%	9%	3%	21%	6%	0%	\$720.00	50%	28%	22%	6,578		
271	800 Fleet St	98	\$1.50	\$15.00*			\$75.00	0	0		*12 hour rolling max; **Event rate to be determined on an event-by-event basis; MP rate increase	84%	60%	51%	47%	30%	9%	44%	24%	3%	\$80.00	65%	5%	30%	138,673	9%	4%
275	1030 King St W	152	\$2.00	\$10.00*	\$5.00		\$170.00	40	25	\$150 tenant	*Incremental increase Day Max approved up to \$15.00 2019 RR.	24%	22%	19%	23%	19%	16%	21%	18%	16%		63%	15%	22%	44,885	-57%	-49%
277	242 Danforth Ave	19	\$2.25	No Day Max	\$7.00		\$540.00	0	0			68%	21%	5%	42%	21%	0%	16%	11%	0%		78%	17%	5%	30,526	-26%	-20%
279	289 Rushton Rd	17	\$1.50	\$8.00	\$5.00		\$120.00	0	0		Opened Feb 8 2019	41%	24%	18%	41%	18%	12%	18%	12%	6%		62%	23%	15%	4,713	-44%	-51%
282	838 Broadview Ave	11	\$1.50	No Day Max	\$8.00		\$360.00	0	2		Special arrangement MP	96%	42%	24%	60%	42%	15%	33%	24%	15%		65%	29%	6%	12,094	2%	-4%
283	100 Cooperage St	87	\$1.50	\$9.00*			\$170.00	0	0		*12 hour rolling max, Incremental Increase approved up to \$10.00 2019 RR. MPs sold above quota must be authorized by property management	95%	82%	77%	25%	16%	7%	16%	9%	3%		83%	3%	13%	69,399	-11%	-41%
284	83 Tannery Rd	19	\$1.50	No Day Max	\$5.00		\$180.00	0	2		MP sold above quota must be authorized by property owner; 10 spaces reserved for property owner; MP rate increase	77%	40%	24%	98%	56%	19%	98%	35%	19%	\$190.00	52%	19%	29%	29,653	273%	286%
285	40 Rolling Mills Rd	22	\$1.50	No Day Max	\$5.00		\$180.00	0	8		MP sold above quota must be authorized by property owner. 10 spaces reserved for property owner. MP rate increase	134%	106%	75%	102%	75%	38%	102%	61%	29%	\$190.00	65%	13%	23%	45,670	124%	82%
286	51 Dockside Dr	8	\$2.50	\$18.00*	\$6.00			0	0		Controlled and uncontrolled facility. Mobile payments only available for eight spaces serviced by Dg4 electric car charging station; *Incremental rate increase up to \$20.00 approved 2019 PR; MP rate applied to controlled portion of facility; YTD information contained in the controlled portion of this table	100%	25%	25%	88%	25%	13%	75%	63%	0%		25%	31%	44%			

Car park closed since last RR	New Car Park since last RR
Updated rate since last RR	Revenue / transactions down since last year



**APPENDIX 1 - PROPOSED RATE CHANGES AND JUSTIFICATIONS**

CP#	Car Park Address	Space Count	1/2 Hour Rate	Day Max (7am - 6pm)	Evening Max (6pm-7am)	Other Rate	Monthly Permit				Comments	Usage - Weekday			Usage - Sat			Usage - Sun			Proposed Changes Monthly Rate	Car Entries			May 2021 Year to Date Rev	May Year Over Year % Change 20/21 Rev	May Year Over Year % Diff 20/21 Transactions
							Rate	Quota	Issued	Tenant Rate / Other Rate		Peak Usage	All	Comm.	Peak Usage	All	Comm.	Peak Usage	All	Comm.		Day %	Afternoon %	Night %			
287	1091 Eastern Ave	47	\$1.00	\$9.00*			\$135.00	0	0		*Day Max 6am-11:59pm. No parking from 12 am - 5:59am. Operated for city parks all year.	11%	6%	6%	13%	6%	0%	32%	23%	0%		58%	25%	17%	3,948	-5%	-38%
288	292 Brunswick Ave	19	\$2.25	No Day Max	No Night Max		\$540.00	0	2		Special arrangement MP.	35%	19%	19%	35%	19%	8%	29%	19%	8%		58%	25%	17%	9,380	-63%	-63%
289	373 Front St W	427	\$2.00	\$12.00*			\$180.00	0	0		Car park closed on January 15, 2021																
291	320 Tweedsmuir Ave	26						0	0		Car parked closed on October 27, 2020																
300	185 Queens Quay E	84	\$2.25	\$15.00	\$8.00		\$225.00	0	0		Car park closed on March 31, 2021																
302	545 Lake Shore Blvd W	111	\$2.00	\$20.00*		**	\$300.00	0	0		*Incremental increase Day Max approved up to \$24.00 RR, with 24 hour rolling max. **Event rates to be determining on an event-by-event basis	35%	14%	6%	65%	27%	3%	68%	37%	7%		46%	21%	33%	94,039	-14%	33%
303	136 Wineva Ave	28	\$1.25	\$7.00	\$4.00		\$105.00	0	0		Opened Feb 19, 2019	32%	21%	14%	36%	14%	7%	29%	18%	4%		67%	19%	14%	8,411	-36%	-33%
306	54 Dalhousie Street	22	\$2.50	No Day Max	\$8.00			0	0		Car Park opened in March 3, 2021; Establishment of MP.	59%	41%	9%	109%	64%	14%	109%	55%	18%	\$600.00	68%	14%	18%	23,311		
400	10 Kingsdale Ave	53	\$2.00	\$12.00	\$6.00 / \$3.00*		\$165.00	0	3		*Weekend Evening Max \$3.00; MP rate increase	38%	35%	27%	16%	12%	10%	14%	8%	5%	\$175.00	79%	14%	7%	25,806	-42%	-44%
401	246 Brooke Ave	94	\$1.50	\$9.00	\$5.00		\$135.00	0	16			46%	39%	32%	33%	26%	23%	21%	20%	16%		82%	15%	3%	44,367	-19%	-26%
402	10 Empress Ave	67	\$2.50	\$17.00*/\$3.00**	\$7.00/\$3.00***		\$195.00	0	0		*Incremental increase Day Max approved up to \$18.00 2019; **Day Max Sunday \$2.00; *** Evening Max Weekend \$3.00; MP rate increase	21%	7%	4%	24%	7%	3%	39%	22%	6%	\$205.00	51%	32%	17%	34,003	-66%	-54%
403	10 Harlandale Ave	116	\$2.75	\$17.00	\$10.00		\$255.00	10	0	\$110.00 other	Other MP rate applies to overnight permit Mon Fri (4pm-8am). Sat/Sun/Hol available 24 hours. Other rate increase.	26%	17%	15%	9%	3%	1%	6%	2%	1%	\$120.00 other	71%	19%	10%	63,947	-61%	-58%
404	95 Beecroft Rd	29	\$2.00	No Day Max / \$5.50*	\$6.00 / \$4.50**			0	0		Controlled and uncontrolled facility; *Weekend Day Max \$5.50; ** Weekend Evening Max \$4.50; Revenue and cars parked under controlled facilities; MP offered in controlled portion of garage	7%	3%	0%	10%	7%	7%	10%	7%	3%		57%	8%	7%			
411	1880 Avenue Rd	32	\$1.25	\$10.00	\$4.00		\$90.00	0	9	\$65.00 other	Other MP rate applies to overnight permit; MP and Other rate increase	54%	48%	41%	32%	32%	26%	29%	26%	26%	\$95.00; \$60.00 other	75%	15%	10%	12,576	-15%	-84%
412	11 Finch Ave W	62	\$2.00	\$15.00	\$6.00 / \$3.50		\$225.00	0	0		*Weekend Evening Max	24%	10%	5%	18%	3%	2%	19%	3%	0%		57%	25%	18%	30,239	-62%	377%
414	3885 Yonge St	139	\$1.25	\$12.00	\$5.00		\$100.00	0	0		MP rate increase	6%	4%	3%	4%	1%	1%	4%	1%	0%	\$110.00	63%	16%	21%	8,977	-83%	-77%
418	68 Sheppard Ave W	30	\$1.50	\$14.00	\$4.00		\$210.00	0	0			27%	20%	17%	7%	3%	0%	3%	3%	0%		75%	13%	13%	11,933	-41%	-30%
419	5667 Yonge St	23	\$2.00	No Day Max	\$6.00		\$480.00	0	0			17%	9%	0%	17%	4%	0%	9%	4%	0%		61%	22%	17%	6,982	-65%	-55%
424	2170 Bayview Ave	69	\$2.50	\$15.00*			\$225.00	0	0		*12 hour rolling max	58%	42%	28%	16%	13%	9%	10%	7%	6%		86%	9%	5%	68,618	-17%	-19%
500	7 Jackson Ave	40	\$1.25	No Day Max	\$5.00		\$100.00	0	11		MP rate increase	30%	27%	22%	35%	27%	22%	27%	25%	22%	\$110.00	75%	17%	8%	6,935	-70%	-58%
501	11 Grenview Blvd N	83	\$1.25	No Day Max	\$5.00		\$100.00	0	17		MP rate increase	38%	25%	19%	44%	24%	18%	28%	19%	16%	\$110.00	67%	25%	8%	26,267	-55%	-25%
502	342 Prince Edward Dr N	43	\$1.25	No Day Max	\$5.00		\$100.00	0	8	\$55.00 other	Other rate applies to overnight permit; MP and Other rate increase	38%	24%	20%	33%	22%	15%	20%	17%	15%	\$110.00; \$55.00 other	75%	19%	6%	12,761	-27%	-29%
503	12 Willingdon Blvd	64	\$1.50	No Day Max	\$5.00		\$100.00	0	11			40%	18%	15%	51%	23%	18%	31%	17%	14%	\$110.00	67%	26%	7%	27,934	-60%	-28%
504	9 Willingdon Blvd	116	\$1.25	No Day Max	\$6.00		\$100.00	0	63	\$55.00 other	Other rate applies to overnight permit; MP and Other rate increase	56%	49%	45%	55%	48%	46%	48%	45%	43%	\$110.00; \$55.00 other	79%	15%	6%	44,032	-38%	-25%
505	934 Royal York Rd	11	\$1.75	No Day Max	\$6.00		\$120.00	0	4		MP rate increase	56%	47%	29%	47%	38%	29%	38%	29%	29%	\$130.00	60%	30%	10%	4,716	-45%	-39%

Car park closed since last RR	New Car Park since last RR
Updated rate since last RR	Revenue / transactions down since last year

**APPENDIX 1 - PROPOSED RATE CHANGES AND JUSTIFICATIONS**

CP#	Car Park Address	Space Count	1/2 Hour Rate	Day Max (7am - 6pm)	Evening Max (6pm-7am)	Other Rate	Monthly Permit				Comments	Usage - Weekday			Usage - Sat			Usage - Sun			Proposed Changes	Car Entries			May 2021 Year to Date Rev	May Year Over Year % Change 20/21 Rev	May Year Over Year % Diff 20/21 Transactions
							Rate	Quota	Issued	Tenant Rate / Other Rate		Peak Usage	All	Comm.	Peak Usage	All	Comm.	Peak Usage	All	Comm.		Day %	Afternoon %	Night %			
506	140 Fifth St	52	\$1.00	\$4.00	\$2.00		\$60.00	28	9			23%	20%	18%	23%	20%	18%	20%	18%	16%		67%	17%	17%	5,640	-32%	-44%
507	66 Third St	24	\$1.00	\$4.00	\$2.00		\$60.00	10	10			58%	54%	50%	63%	50%	42%	58%	50%	46%		58%	17%	25%	5,570	30%	12%
508	128 Eighth St	58	\$1.00	\$4.00	\$2.00		\$60.00	44	16			32%	27%	26%	32%	29%	27%	34%	29%	26%		53%	20%	27%	7,416	-18%	-2%
509	105 Fourth St	34	\$1.00	\$5.00*			\$60.00	16	9		Formerly MP only lot. Pay and display machine installed in Oct 2020 to be operated as an unattended facility; *24 hour rolling max rate approved as of 2019 RR; MP rate increase										\$65.00	60%	20%	20%	2,691	305%	
510	3239 Lake Shore Blvd W	24	\$1.00	No Day Max	\$2.00		\$240.00	5	0	\$55.00 other	Other MP rate applies to overnight permit during weekdays Mon-Fri, Weekends/Holidays 24 hours. Other rate increase	8%	4%	0%	8%	0%	0%	4%	0%	0%	\$60.00 other	43%	29%	29%	1,002	-87%	-78%
511	120 Sixth St	58	\$1.00	\$4.00	\$3.00		\$75.00	33	18			51%	47%	40%	35%	32%	27%	30%	28%	27%		81%	10%	10%	12,945	89%	71%
512	3220 Bloor St W	68	\$1.50	No Day Max	\$4.00		\$130.00	0	1		MP rate increase	20%	9%	4%	9%	3%	1%	9%	3%	1%	\$140.00	76%	15%	9%	16,464	-62%	-42%
513	575 Royal York Rd	28	\$1.00	\$5.00*			\$50.00	0	1		*24 hour rolling max; MP rate increase	42%	28%	24%	28%	14%	10%	17%	6%	6%	\$55.00	75%	15%	10%	3,527	7%	4%
514	139 Islington Ave	11					\$70.00	0	5		MP only lot														1,735	39%	
516	1124 The Queensway (Rear)	11					\$65.00	0	10		MP only lot; MP rate increase										\$70.00				2,876	3%	
517	139 Islington Ave	23	\$1.00	\$5.00*			\$60.00	0	3		*24 hour rolling max; MP rate increase	67%	32%	19%	63%	37%	19%	67%	37%	15%	\$65.00	64%	21%	14%	6,118	51%	23%
519	5 Dayton Ave	16	\$1.00	\$5.00	\$3.00		\$50.00	8	8		MP rate increase	84%	78%	71%	90%	84%	71%	53%	53%	53%	\$55.00	80%	10%	10%	4,984	38%	24%
520	20 Royalavon Crescent	59	\$1.00	\$5.00*			\$60.00	0	5		*24 hour rolling max; MP rate increase	44%	15%	12%	39%	15%	10%	34%	10%	8%	\$65.00	53%	21%	26%	12,772	-30%	-46%
521	7 Monkton Ave	25	\$2.50	No Day Max	\$6.00		\$600.00	0	0			48%	20%	8%	8%	4%	0%	4%	0%	0%		84%	12%	5%	18,377	-47%	-35%
532	14 Barkwin Dr	23	\$1.00	\$5.00*			\$55.00	15	2		*24 hour rolling max; MP rate increase	11%	7%	7%	11%	7%	7%	11%	7%	7%	\$60.00	25%	50%	25%	585	-39%	-39%
533	2300 Lake Shore Blvd W	24	\$1.00	\$6.00*			\$90.00	0	0		*24 hour rolling max	54%	8%	8%	83%	25%	13%	104%	38%	13%		29%	29%	43%	6,352	-6%	3%
600	540 Mortimer Ave	18	\$2.25	No Day Max / \$5.00*	\$3.00		\$540.00	0	0		*No Day Max weekday 7am-5pm; Day Max weekends \$5.00; Evening Max rates apply 5pm-7am; MP rate increase	50%	17%	11%	28%	17%	11%	22%	17%	11%	\$540.00	84%	11%	5%	16,938	-31%	-39%
602	1501 Bayview Ave	24	\$1.00	No Day Max	\$4.00		\$240.00	0	0		MP rate increase	38%	13%	13%	54%	4%	0%	38%	8%	0%	\$240.00	68%	27%	5%	9,690	-47%	-11%
650	16 John St	76	\$1.00	\$5.00			\$70.00	24	0		*12 hour rolling max; MP rate increase	30%	20%	11%	32%	17%	8%	22%	12%	7%	\$75.00	63%	17%	20%	20,157	-37%	-22%
651	1169 Weston Rd	36	\$1.00	\$4.00	\$2.00		\$65.00	20	19	\$35.00 other	Other MP rate applies to Humber Community Seniors Home. In proximity to Eglinton Crosstown daily rates not being adjusted. Other rate increase	89%	78%	70%	70%	62%	59%	53%	42%	42%	\$40.00 other	74%	11%	15%	9,637	-7%	66%
652	301 Scott Rd	10	\$1.00	\$5.00	\$3.00		\$75.00	0	0		In proximity to Eglinton Crosstown rates not being adjusted. MP rate assigned for reference	100%	70%	50%	60%	30%	20%	30%	20%	0%		67%	22%	11%	4,655	-34%	15%
653	17 Riverview Gardens	95	\$1.00	\$7.00	\$5.00		\$120.00	0	4			28%	20%	15%	10%	5%	3%	8%	7%	5%		80%	17%	3%	20,451	-58%	-53%
654	16 Riverview Gardens	59	\$1.00	\$7.00	\$4.00		\$100.00	0	5		MP rate increase	22%	17%	14%	20%	14%	12%	19%	14%	12%	\$110.00	58%	16%	26%	10,966	-37%	-46%
655	168 Chiltern Hill Rd	68	\$1.00	\$6.00	\$4.00		\$100.00	0	0		In proximity to Eglinton Crosstown rates not being adjusted	107%	96%	85%	57%	50%	46%	21%	16%	9%		81%	8%	11%	12,188	-74%	104%
656	1 Mould Ave	9					\$50.00	7	7		MP lot only; MP rate increase										\$55.00				1,372	-5%	
657	271A Scarlett Rd	11	\$1.00	No Day Max*			\$240.00	0	0		*No Day Max 7am-7am	55%	0%	0%	55%	9%	0%	45%	18%	0%		67%	26%	7%	1,668	-19%	67%
658	2050 Dufferin St	48	\$1.00	\$4.00*			\$50.00	45	0		*24 hour rolling max; MP rate increase	8%	4%	2%	10%	2%	2%	10%	2%	0%	\$55.00	33%	33%	33%	7,285	-59%	-22%
659	341 Oakwood Ave	23	\$1.00	No Day Max*	\$3.00		\$240.00	0	0		*No Day Max 9 am-9pm	17%	13%	9%	26%	13%	4%	22%	13%	0%		54%	23%	23%	3,886	-48%	-43%
660	406 Oakwood Ave	19	\$1.00	\$4.00	\$3.00		\$55.00	10	11		MP rate increase	62%	57%	57%	78%	67%	62%	73%	57%	57%	\$60.00	50%	25%	25%	3,916	-21%	-7%
661	433 Rogers Rd	28	\$1.00	\$4.50	\$2.50		\$55.00	10	7		MP rate increase	45%	31%	24%	49%	34%	27%	45%	34%	27%	\$60.00	60%	13%	27%	6,024	2%	4%
663	1 Shortt St	138	\$1.00	\$5.00	\$3.00		\$70.00	65	43		In proximity to Eglinton Crosstown daily rates not being adjusted	105%	97%	88%	58%	51%	47%	37%	34%	32%	\$75.00	85%	10%	5%	34,193	-33%	72%

Car park closed since last RR      New Car Park since last RR  
 Updated rate since last RR      Revenue / transactions down since last year

**APPENDIX 1 - PROPOSED RATE CHANGES AND JUSTIFICATIONS**

CP#	Car Park Address	Space Count	1/2 Hour Rate	Day Max (7am - 6pm)	Evening Max (6pm-7am)	Other Rate	Monthly Permit				Comments	Usage - Weekday			Usage - Sat			Usage - Sun			Proposed Changes Monthly Rate	Car Entries			May 2021 Year to Date Rev	May Year Over Year % Change 20/21 Rev	May Year Over Year % Diff 20/21 Transactions
							Rate	Quota	Issued	Tenant Rate / Other Rate		Peak Usage	All	Comm.	Peak Usage	All	Comm.	Peak Usage	All	Comm.		Day %	Afternoon %	Night %			
664	1609 Eglinton Ave W.	33	\$1.00	\$5.00	\$3.00		\$70.00	0	0		Site reopened on January 22, 2021; MP rate increase	109%	94%	85%	52%	39%	30%	36%	12%	9%	\$75.00	73%	10%	17%	6,792	0%	0%
667	1531 Eglinton Ave W.	20	\$1.00	\$5.00	\$3.00			0	0		In proximity to Eglinton Crosstown daily rates are not being adjusted; MP rate increase	115%	100%	90%	45%	20%	20%	15%	10%	10%	\$75.00	74%	16%	10%	5,162	-45%	41%
668	2700 Eglinton Ave W	99	\$2.00	\$9.00*		**	\$135.00	0	0		*Day Max 5am-5pm; **Free after 5pm Mon-Fri and all day Sat/Sun; In proximity to Eglinton Crosstown daily rates are not being adjusted	7%	2%	2%	0%	0%	0%	0%	0%	0%		89%	11%	0%	5,367	-87%	-84%
669	2700 Eglinton Ave W	34	\$2.00	\$9.00*		**	\$135.00	0	0		*Day Max 5am-5pm; **Free after 5pm Mon-Fri and all day Sat/Sun. In proximity to Eglinton Crosstown daily rates are not being adjusted	3%	3%	0%	0%	0%	0%	0%	0%	0%		67%	33%	0%	171	-97%	-88%
670	2053 Dufferin St	22	\$1.00	\$6.00	\$3.00		\$90.00	0	0			32%	14%	14%	45%	18%	14%	27%	14%	9%		57%	19%	24%	6,699	14%	9%
674	2623 Eglinton Ave W	12	\$1.00	\$6.00*			\$90.00	0	0		*24 hour rolling max. In proximity to Eglinton Crosstown daily rates are not being adjusted	58%	33%	25%	25%	8%	0%	17%	8%	0%		64%	18%	18%	2,238	-56%	29%
675	4 Rosemount Ave	34	\$1.00	\$5.00*			\$75.00	0	0		*12 hour rolling max. Closed February 25, 2021																
700	101 Grangeway Ave	255	\$1.00	\$5.00*			\$85.00	0	2		*24 hour rolling max	4%	2%	2%	3%	1%	1%	3%	1%	1%		71%	14%	14%	2,946	-93%	-88%
701	197 Blantyre Ave	83	\$1.00	\$5.00*			\$60.00	48	50		*24 hour rolling max; MP rate increase	67%	55%	53%	71%	58%	53%	66%	54%	49%	\$65.00	58%	23%	19%	22,273	11%	22%
706	284 Milner Ave	92	\$2.00	\$8.00	\$3.00		\$120.00	0	0			9%	5%	5%	3%	4%	3%	1%	0%	0%		83%	11%	6%	5,895	-82%	-79%
707	1530 Markham Rd	20	\$2.50	No Day Max	\$3.00		\$600.00	0	0			70%	5%	0%	5%	0%	0%	5%	0%	0%		80%	13%	7%	5,325	-75%	-74%
709	1940/1950 Lawrence Ave E	24	\$1.00	\$5.00*			\$50.00	20	18		*24 hour rolling max; MP rate increase	85%	73%	73%	73%	68%	64%	77%	64%	60%	\$55.00	57%	14%	29%	5,540	19%	7%
710	100 100 Grangeway Ave	215	\$1.00	\$5.00*			\$75.00	0	0		*24 hour rolling max	15%	11%	10%	11%	2%	1%	3%	1%	1%		87%	3%	10%	11,449	-75%	-74%
711	158 Borough Dr	15	\$1.00	No Day Max*	\$4.00		\$240.00	0	0		*No Day Max 8am-4pm	20%	13%	13%	13%	0%	0%	7%	0%	0%		56%	33%	11%	2,206	-65%	-66%

Car park closed since last RR	New Car Park since last RR
Updated rate since last RR	Revenue / transactions down since last year

**APPENDIX 1 - PROPOSED RATE CHANGES AND JUSTIFICATIONS**

**PARKS OPERATED LOTS**

*Unless otherwise specified, operating from the Friday of Victoria's Day long weekend to Labour Day annually. Rates set in consultation with Parks.*

CP#	Car Park Address	Space Count	1/2 Hour Rate	Day Max (7am - 6pm)	Evening Max (6pm-7am)	Other Rate	Monthly Permit				Comments	Usage - Weekday			Usage - Sat			Usage - Sun			Proposed Changes Monthly Rate	Car Entries			May 2021 Year to Date Rev	May Year Over Year % Change 20/21 Rev	May Year Over Year % Diff 20/21 Transactions			
							Rate	Quota	Issued	Tenant Rate / Other Rate		Peak Usage	All	Comm.	Peak Usage	All	Comm.	Peak Usage	All	Comm.		Day %	Afternoon %	Night %						
181	1155 King St. W.	285	\$2.00	\$16.00**	\$8.00	\$20.00**	\$150.00	0	16		Operated year round. *Reduction of spaces due to respite shelter; **Incremental increase Day Max approved up to \$20.00 2018 RR; ***Event rate; MP rate increase	8%	8%	6%	7%	6%	6%	6%	6%	6%	6%	\$160.00	75%	10%	15%	68,978	-71%	-83%		
193	1675 Lake Shore Blvd E	292	\$1.00		\$5.00*	\$9.00**		0	0		*Mon-Fri free parking before 5pm, Night Max 5pm-9pm; **Sat/Sun/Hol Max 9am-11:59pm.; No overnight parking 12am-6pm; YTD not included as car park was closed in May 2020	39%	9%	0%	75%	51%	3%	85%	64%	5%					11%	40%	49%	39,418		
194	20 Ashbridges Bay Park Rd	270	\$1.00		\$5.00	\$9.00	\$150.00	0	0		*Mon-Fri free parking before 5pm, Night Max 5pm-9pm; **Sat/Sun/Hol Max 9am-11:59pm.; No overnight parking 12am-6pm; MP rate increase	26%	3%	0%	57%	39%	10%	79%	53%	11%	\$160.00				6%	46%	48%	26,675		
206	2001 Lake Shore Blvd W	185	\$1.00		\$5.00	\$9.00		0	0		*Mon-Fri free parking before 5pm, Night Max 5pm-9pm; **Sat/Sun/Hol Max 9am-11:59pm.; No overnight parking 12am-6pm; YTD not included as car park was closed in May 2020	26%	5%	0%	31%	30%	5%	32%	26%	2%					8%	34%	58%	14,088		
207	2001 Lake Shore Blvd W	187	\$1.00		\$5.00	\$9.00		0	0		*Mon-Fri free parking before 5pm, Night Max 5pm-9pm; **Sat/Sun/Hol Max 9am-11:59pm.; No overnight parking 12am-6pm;	29%	9%	0%	28%	26%	2%	28%	37%	2%					14%	35%	52%	14,075	331%	133%
208	1575 Lake Shore Blvd W	193	\$1.00		\$5.00	\$9.00		0	0		*Mon-Fri free parking before 5pm, Night Max 5pm-9pm; **Sat/Sun/Hol Max 9am-11:59pm.; No overnight parking 12am-6pm	15%	4%	0%	10%	13%	1%	20%	18%	0%					14%	34%	52%	7,141	122%	17%
209	711 Lakeshore Blvd W.	65	\$1.00	\$11.00*				0	0		Operated year round. *Day Max 6am-11:59pm; **No parking 12am-5:59am	48%	17%	8%	46%	29%	3%	38%	26%	3%					45%	26%	29%	42,390	36%	161%
210	25 Net Dr	120	\$1.00		\$5.00	\$9.00		0	0		*Mon-Fri free parking before 5pm, Night Max 5pm-9pm; **Sat/Sun/Hol Max 9am-11:59pm.; No overnight parking 12am-6pm; YTD not included as car park was closed in May 2020	7%	3%	0%	6%	4%	0%	11%	6%	0%					16%	26%	58%	2,260		
522	2235 Lake Shore Blvd W	228	\$1.00		\$5.00	\$9.00		0	0		*Mon-Fri free parking before 5pm, Night Max 5pm-9pm; **Sat/Sun/Hol Max 9am-11:59pm.; No overnight parking 12am-6pm; YTD not included as car park was closed in May 2020	29%	7%	0%	80%	50%	4%	90%	63%	7%					10%	31%	59%	31,690		
523	2235 Lake Shore Blvd W	80	\$1.00		\$5.00	\$9.00		0	0		*Mon-Fri free parking before 5pm, Night Max 5pm-9pm; **Sat/Sun/Hol Max 9am-11:59pm.; No overnight parking 12am-6pm; YTD not included as car park was closed in May 2020	15%	5%	0%	53%	29%	4%	98%	73%	5%					13%	34%	53%	8,591		
524	2235 Lake Shore Blvd W	144	\$1.00		\$5.00	\$9.00		20	0		*Mon-Fri free parking before 5pm, Night Max 5pm-9pm; **Sat/Sun/Hol Max 9am-11:59pm.; No overnight parking 12am-6pm; Issue 30 seasonal permits (summer only) at \$0.00 charge for Humber Bay Sailing Club; YTD not included as car park was closed in May 2020	17%	5%	1%	35%	22%	3%	67%	42%	4%					17%	26%	57%	10,632		

Car park closed since last RR	New Car Park since last RR
Updated rate since last RR	Revenue / transactions down since last year

**APPENDIX 1 - PROPOSED RATE CHANGES AND JUSTIFICATIONS**

CP#	Car Park Address	Space Count	1/2 Hour Rate	Day Max (7am - 6pm)	Evening Max (6pm-7am)	Other Rate	Monthly Permit				Comments	Usage - Weekday			Usage - Sat			Usage - Sun			Proposed Changes Monthly Rate	Car Entries			May 2021 Year to Date Rev	May Year Over Year % Change 20/21 Rev	May Year Over Year % Diff 20/21 Transactions
							Rate	Quota	Issued	Tenant Rate / Other Rate		Peak Usage	All	Comm.	Peak Usage	All	Comm.	Peak Usage	All	Comm.		Day %	Afternoon %	Night %			
525	2235 Lake Shore Blvd W	28	\$1.00		\$5.00	\$9.00		0	0		*Mon-Fri free parking before 5pm, Night Max 5pm-9pm; **Sat/Sun/Hol Max 9am-11:59pm.; No overnight parking 12am-6pm; YTD not included as car park was closed in May 2020	50%	18%	0%	93%	46%	7%	104%	61%	4%		16%	32%	52%	4,676		
526	2235 Lake Shore Blvd W	22	\$1.00		\$5.00	\$9.00		0	0		*Mon-Fri free parking before 5pm, Night Max 5pm-9pm; **Sat/Sun/Hol Max 9am-11:59pm.; No overnight parking 12am-6pm; YTD not included as car park was closed in May 2020	45%	14%	0%	77%	50%	0%	100%	59%	9%		14%	45%	41%	3,184		
527	2235 Lake Shore Blvd W	10	\$1.00		\$5.00	\$9.00		0	0		*Mon-Fri free parking before 5pm, Night Max 5pm-9pm; **Sat/Sun/Hol Max 9am-11:59pm.; No overnight parking 12am-6pm; YTD not included as car park was closed in May 2020	70%	20%	0%	120%	50%	20%	150%	60%	0%		13%	38%	50%	2,017		
528	5 Colonel Samuel Smith Park Dr.	53	\$1.00	No Day Max*	FREE	FREE		0	0		Operated year round. *No Day Max 7am-3pm. Evening, weekend, and holiday free parking.	4%	2%	0%	0%	0%	0%	0%	0%	0%		100%	0%	0%	2,292	-86%	-95%
529	65 Colonel Samuel Smith Park Dr	149	\$1.00	No Day Max*	FREE	FREE		0	0		Operated year round. *No Day Max 7am-3pm. Evening, weekend, and holiday free parking.	24%	2%	0%	0%	0%	0%	0%	0%	0%		100%	0%	0%	6,092	-59%	-42%
534	15 Marine Parade Dr	15	\$1.00	\$9.00*				0	0		Operated year round. *Day Max 6am-11:59pm, no parking 12am-5:59pm.	107%	53%	20%	147%	93%	20%	153%	100%	27%		54%	19%	27%	18,096	129%	183%
702	1 Brimley Rd	232	\$1.50	\$6.00	\$12.00			0	0		*Mon-Fri free parking before 5pm, Night Max 5pm-9pm; **Sat/Sun/Hol Max 9am-11:59pm.; No overnight parking 12am-6pm; YTD not included as car park was closed in May 2020	36%	8%	0%	85%	46%	1%	84%	68%	6%		11%	45%	44%	40,922		
703	1 Brimley Rd	128	\$1.50	\$6.00	\$12.00			0	0		*Mon-Fri free parking before 5pm, Night Max 5pm-9pm; **Sat/Sun/Hol Max 9am-11:59pm.; No overnight parking 12am-6pm; YTD not included as car park was closed in May 2020	33%	5%	1%	77%	33%	7%	88%	73%	13%		9%	42%	49%	18,850		
705	1 Brimley Rd	168	\$1.50	\$6.00	\$12.00			0	0		*Mon-Fri free parking before 5pm, Night Max 5pm-9pm; **Sat/Sun/Hol Max 9am-11:59pm.; No overnight parking 12am-6pm; YTD not included as car park was closed in May 2020	63%	12%	1%	78%	65%	12%	92%	78%	16%		11%	50%	39%	34,561		

<i>Car park closed since last RR</i>	<i>New Car Park since last RR</i>
<b>Updated rate since last RR</b>	<b>Revenue / transactions down since last year</b>

**APPENDIX 1 - PROPOSED RATE CHANGES AND JUSTIFICATIONS**

**TTC LOTS**

*Non-branded lots. Operated on behalf of TTC*

CP#	Car Park Address	Space Count	1/2 Hour Rate	Day Max (7am - 6pm)	Evening Max (6pm-7am)	Other Rate	Monthly Permit				Comments	Usage - Weekday			Usage - Sat			Usage - Sun			Proposed Changes	Car Entries			May 2021 Year to Date Rev	May Year Over Year % Change 20/21 Rev	May Year Over Year % Diff 20/21 Transactions
							Rate	Quota	Issued	Tenant Rate / Other Rate		Peak Usage	All	Comm.	Peak Usage	All	Comm.	Peak Usage	All	Comm.		Monthly Rate	Day %	Afternoon %			
800	5285 Dundas Street West	238		\$6.00*	\$2.00**			0	0		Car park opened in January 2021; *Flat rate Mon-Fri entries 5am-3pm valid to 2am. **Flat rate Mon-Fri 3pm-2am NO PARKING 2am-5am. FREE WEEKEND.	24%	19%	16%	16%	0%	0%	0%	0%	0%		84%	4%	13%	24,954		
801	400 Munster Ave	829		\$6.00*	\$2.00**			0	0		*Flat rate Mon-Fri entries 5am-3pm valid to 2am. **Flat rate Mon-Fri 3pm-2am NO PARKING 2am-5am. FREE WEEKEND	14%	11%	9%	9%	0%	0%	0%	0%	0%		77%	5%	18%	62,209	-81%	-80%
802	3330 Bloor St W	534		\$6.00*	\$2.00**			0	0		*Flat rate Mon-Fri entries 5am-3pm valid to 2am. **Flat rate Mon-Fri 3pm-2am NO PARKING 2am-5am. FREE WEEKEND	28%	22%	18%	20%	0%	0%	0%	0%	0%		78%	7%	15%	70,869	-58%	-58%
804	20 Lomond Dr	258		\$7.00*	\$4.00**			0	0		*Flat rate entries 5am-3pm valid to 2pm 7 days a week. **flat rate 3pm-2am 7 days a week NO PARKING 2am-5am. FREE WEEKEND	53%	45%	30%	35%	5%	3%	6%	2%	1%		85%	7%	8%	67,855	-32%	-29%
805	400 Indian Rd	187		\$5.00*				0	0		*Flat rate Mon-Fri entries 5am-2am. NO PARKING 2am-5am. FREE WEEKEND.	33%	26%	18%	28%	0%	0%	0%	0%	0%		82%	10%	8%	25,082	-42%	-39%
811	50 Wilson Heights Blvd	885		\$5.00*	\$2.00**			0	0		*Flat rate Mon-Fri entries 5am-3pm valid to 2am. **Flat rate Mon-Fri 3pm-2am NO PARKING 2am-5am. FREE WEEKEND.	32%	24%	22%	24%	0%	0%	0%	0%	0%		77%	5%	19%	109,066	-52%	-50%
813	18 Hendon Ave	1552		\$5.00*	\$2.00**			0	0		*Flat rate Mon-Fri entries 5am-3pm valid to 2am. **Flat rate Mon-Fri 3pm-2am NO PARKING 2am-5am. FREE WEEKEND.	24%	19%	14%	17%	0%	0%	0%	0%	0%		81%	8%	11%	136,008	-58%	-56%
814	890 Willowdale Ave	859		\$5.00*	\$2.00**			0	0		*Flat rate Mon-Fri entries 5am-3pm valid to 2am. **Flat rate Mon-Fri 3pm-2am NO PARKING 2am-5am. FREE WEEKEND.	19%	15%	12%	12%	0%	0%	0%	0%	0%		81%	7%	12%	59,387	-82%	-80%
815	2760 Old Leslie St	102	\$2.00	\$7.00*				0	0		*1 hour parking. **Day Max 7 days a week and holidays 5 am - 2 am. NO parking 2 am - 5 am.	39%	33%	25%	25%	13%	7%	16%	3%	2%		78%	12%	10%	25,351	-47%	-42%
816	1800 Sheppard Ave. E.	366		\$7.00*				0	0		*Day Max Mon-Fri 5am-9:30am. NO PARKING from the time the mall closes to 5am.	0%	1%	1%	0%	0%	0%	0%	0%	0%		43%	0%	57%	4,004	-90%	-85%
817	1050 Ellesmere Rd (Near)	68		\$3.00*	\$2.00**			\$35.00	0	16	*Flat rate Mon-Fri entries 5am-3pm valid to 2am. **Flat rate Mon-Fri 3pm-2am NO PARKING 2am-5am. FREE WEEKEND.	53%	44%	35%	39%	19%	19%	19%	19%	19%		74%	9%	17%	6,968	-39%	-28%
818	2450 Lawrence Ave E (Near)	90		\$3.00*	\$2.00**			0	0		*Flat rate Mon-Fri entries 5am-3pm valid to 2am. **Flat rate Mon-Fri 3pm-2am NO PARKING 2am-5am. FREE WEEKEND.	8%	7%	6%	6%	0%	0%	0%	0%	0%		60%	20%	20%	1,570	-85%	-81%
821	155 Transway Cres	450		\$5.00*	\$2.00**			0	0		*Flat rate Mon-Fri entries 5am-3pm valid to 2am. **Flat rate Mon-Fri 3pm-2am NO PARKING 2am-5am. FREE WEEKEND.	32%	22%	18%	23%	0%	0%	0%	0%	0%		68%	8%	24%	51,156	-45%	-45%
822	705 Warden Ave	920		\$4.00*	\$2.00**			0	0		*Flat rate Mon-Fri entries 5am-3pm valid to 2am. **Flat rate Mon-Fri 3pm-2am NO PARKING 2am-5am. FREE WEEKEND.	3%	3%	2%	9%	0%	0%	0%	0%	0%		59%	30%	11%	6,787	-89%	-83%
823	701 Warden Ave	151		\$5.00*	\$2.00**			0	0		*Flat rate Mon-Fri entries 5am-3pm valid to 2am. **Flat rate Mon-Fri 3pm-2am NO PARKING 2am-5am. FREE WEEKEND.	31%	24%	16%	26%	0%	0%	0%	0%	0%		77%	11%	13%	19,886	-52%	-53%
824	777 Victoria Park Ave	173		\$4.00*	\$2.00**			0	0		*Flat rate Mon-Fri entries 5am-3pm valid to 2am. **Flat rate Mon-Fri 3pm-2am NO PARKING 2am-5am. FREE WEEKEND.	23%	20%	13%	16%	0%	0%	0%	0%	0%		87%	5%	8%	12,825	-64%	-64%

<i>Car park closed since last RR</i>	<i>New Car Park since last RR</i>
<b>Updated rate since last RR</b>	<b>Revenue / transactions down since last year</b>

**APPENDIX 1 - PROPOSED RATE CHANGES AND JUSTIFICATIONS**

CP#	Car Park Address	Space Count	1/2 Hour Rate	Day Max (7am - 6pm)	Evening Max (6pm-7am)	Other Rate	Monthly Permit				Comments	Usage - Weekday			Usage - Sat			Usage - Sun			Proposed Changes Monthly Rate	Car Entries			May 2021 Year to Date Rev	May Year Over Year % Change 20/21 Rev	May Year Over Year % Diff 20/21 Transactions
							Rate	Quota	Issued	Tenant Rate / Other Rate		Peak Usage	All	Comm.	Peak Usage	All	Comm.	Peak Usage	All	Comm.		Day %	Afternoon %	Night %			
826	2450 Eglinton Ave E	199		\$5.00*	\$2.00**			0	0		*Flat rate Mon-Fri entries 5am-3pm valid to 2am. **Flat rate Mon-Fri 3pm-2am NO PARKING 2am-5am. FREE WEEKEND.	3%	2%	2%	2%	0%	0%	0%	0%	0%		50%	17%	33%	1,330	-95%	-90%
827	415 William R Allen Rd	632		\$5.00*	\$2.00**			0	0		*Flat rate Mon-Fri entries 5am-3pm valid to 2am. **Flat rate Mon-Fri 3pm-2am NO PARKING 2am-5am. FREE WEEKEND.	7%	6%	4%	5%	0%	0%	0%	0%	0%		84%	7%	9%	18,752	-82%	-78%
829	25 Transit Rd	72		\$5.00*	\$2.00**	\$2.00***		0	0		*Flat rate Mon-Fri entries 5am-3pm valid to 2am. **Flat rate Mon-Fri 3pm-2am NO PARKING 2am-5am. FREE WEEKEND.	57%	36%	31%	33%	0%	0%	0%	0%	0%		65%	8%	28%	17,937	-18%	-19%
831	22 Fieldway Rd	217		\$5.00*	\$2.00**			0	0		*Flat rate Mon-Fri entries 5am-3pm valid to 2am. **Flat rate Mon-Fri 3pm-2am NO PARKING 2am-5am. FREE WEEKEND.	11%	8%	6%	6%	2%	1%	4%	3%	1%		77%	9%	14%	5,782	-85%	-79%
833	3950 Keele St	350		\$7.00*	\$2.00**			0	0		*Flat rate Mon-Fri entries 5am-3pm valid to 2am. **Flat rate Mon-Fri 3pm-2am NO PARKING 2am-5am. FREE WEEKEND.	2%	2%	1%	1%	0%	0%	0%	0%	0%		67%	22%	11%	4,001	-81%	-70%
834	2800 Steeles Ave W	1881		\$7.00*	\$2.00**			0	0		*Flat rate Mon-Fri entries 5am-3pm valid to 2am. **Flat rate Mon-Fri 3pm-2am NO PARKING 2am-5am. FREE WEEKEND.	1%	1%	0%	1%	0%	0%	0%	0%	0%		71%	18%	12%	6,646	-95%	-86%
835	7332 Jane St	589		\$7.00*	\$2.00**			0	0		*Flat rate Mon-Fri entries 5am-3pm valid to 2am. **Flat rate Mon-Fri 3pm-2am NO PARKING 2am-5am. FREE WEEKEND.	6%	4%	4%	5%	0%	0%	0%	0%	0%		76%	12%	12%	24,970	-87%	-86%
836	1138 Bathurst St	100		\$5.00*				0	0		*Flat Rate Mon-Sun. TTC staff parking.	103%	81%	79%	69%	5%	5%	2%	1%	0%		83%	2%	15%	38,278	56%	60%

<i>Car park closed since last RR</i>	<i>New Car Park since last RR</i>
<b>Updated rate since last RR</b>	Revenue / transactions down since last year