



PB22.3

Inclusion on the City of Toronto's Heritage Register - Queen Street East - Leslieville Properties

PB22.3 Queen East / Leslieville

Leslieville Planning Study and Heritage Survey

- Completed in 2014
- Identifies Queen Street East as a lively street that has historically and continues to be tied into the surrounding community and a destination for visitors. It's low-scale context, concentration of small businesses and heritage properties, and fine-grained lot pattern contribute to a distinct sense of place
- The study prioritizes the pedestrian environment to reflect the unique character of Leslieville and its vibrant streetscape



Queen St. E (North Side)



Queen St. E (South Side)



PB22.3 Queen East / Leslieville

Development Principles in Leslieville

New development within Leslieville should contribute to achieving the following principles:

- ✓ Pedestrian-Oriented Public Realm
- ✓ High Quality Built Form
- ✓ Diversity of Uses and Inclusivity
- ✓ Enhancing Heritage and Culture
- ✓ Sustainability Initiatives



PB22.3

Queen East / Leslieville

- The Leslieville neighbourhood was identified as having a long history as a predominantly working-class area, with community life centered along the local main street, Queen Street East
- 56 properties of heritage interest were identified for further study through the UDG
- New development is guided to respect heritage features and the prevailing context as defined in the UDG
- As the area continues to evolve, the UDG states that heritage properties will be maintained and enhanced, alongside and as part of new developments



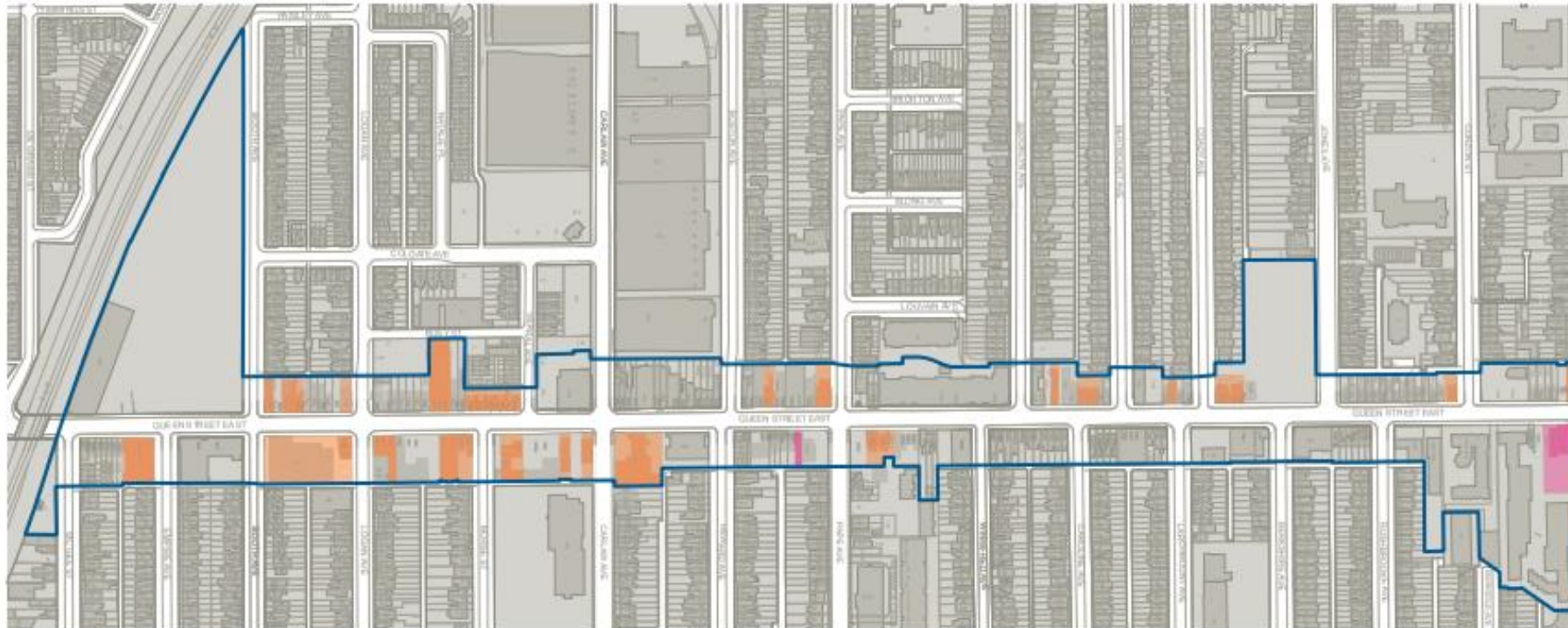
Map of Toronto, 1878. City of Toronto Archives



Queen Street East and Morse Street, 1959

PB22.3 Queen East / Leslieville

APPENDIX F: HERITAGE INVENTORY FOR THE LESLIEVILLE STUDY AREA



*Properties with Potential Heritage Value have been deemed to merit investigation for their potential as heritage properties and would merit a review to determine their potential in the context of a development application. Identification does not necessarily imply the property will meet the criteria for inclusion in the City's Inventory of Heritage Properties.

- Properties included in the City's Inventory of Heritage Properties
- Properties with Potential Heritage Value*

PB22.3 Queen East / Leslieville

- Staff have reviewed the 56 properties identified through the Leslieville Heritage Survey
- Properties that have been demolished, materially altered, or evaluated through a planning application have been removed
- 8 properties have subsequently been added to the recommended list for inclusion on the Register
- The final list is recommending 54 properties for inclusion on the Register



Properties Recommended for Inclusion on the Heritage Register – Main Street Commercial Rows + Blocks



880-892 Queen St E



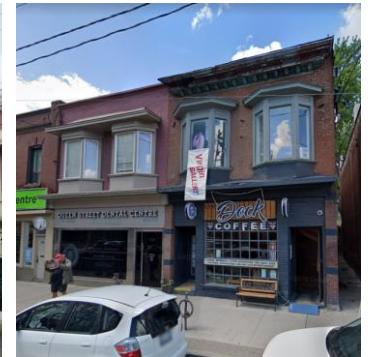
889-893 Queen St E



909, 911 Queen St E



924, 926 Queen St E



930, 932 Queen St E



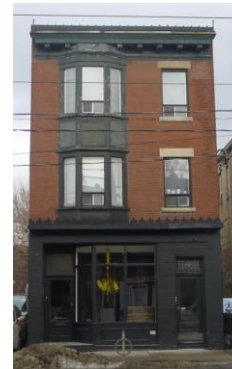
934-954 Queen St E



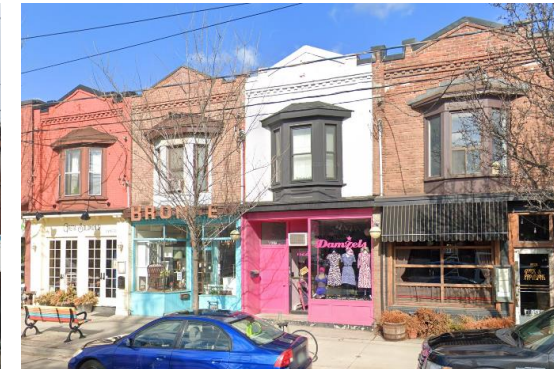
972-978 Queen St E



1026, 1028 Queen St E



1046 Queen St E



1118-1124 Queen St E



1142 Queen St E

Properties Recommended for Inclusion on the Heritage Register – Main Street Commercial Rows, Blocks + Residential with Storefront Addition



1148-1154 Queen St E



1192 Queen St E



909, 911 Queen St E



1100 Queen St E



935 Queen St E



1011-1015 Queen St E

Properties Recommended for Inclusion on the Heritage Register – Warehouse/Factory, Banks, Landmark, Place of Worship



825 Queen Street East



904 Queen St E



923 Queen St E



943 Queen St E



945 Queen St E



1046 Queen St E



1220 Queen St E

Leslieville Urban Design Guidelines

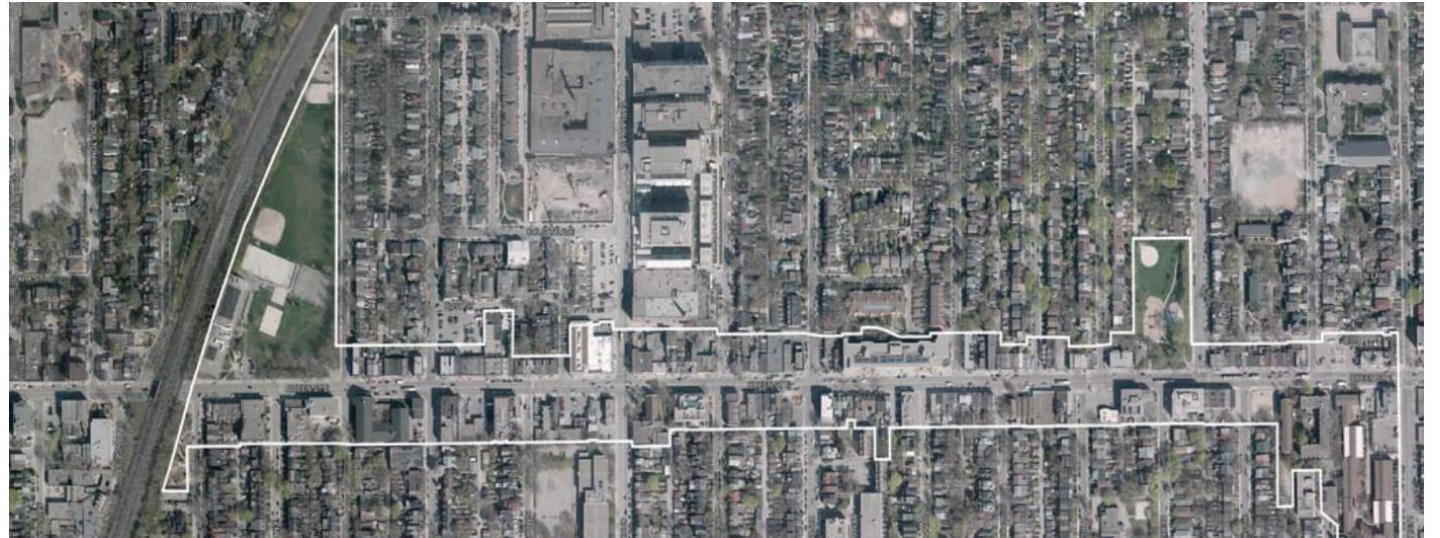


Queen Street East :

Railway Crossing at Jimmie Simpson Park to Leslie Street

LESLIEVILLE URBAN DESIGN GUIDELINES

URBAN DESIGN
GUIDELINES
June 2014
TORONTO



<https://www.toronto.ca/legdocs/mmis/2014/te/bgrd/backgroundfile-70398.pdf>