



# **PB24.5**

**Intention to Designate under Part IV,  
Section 29 of the Ontario Heritage Act,  
Alterations to a Heritage Property and  
Authority to Enter into a Heritage  
Easement Agreement - 685 Queen  
Street East**

# PB24.5 685 Queen Street East



The location map (right) is for information purposes only; the exact boundaries of the property are not shown. The arrow marks the location of the site. The aerial view (above), looking south, shows the property on the south side of Queen Street East. Please note that the adjacent Toyota showroom, to the west, has been demolished (Google Maps, 2021)





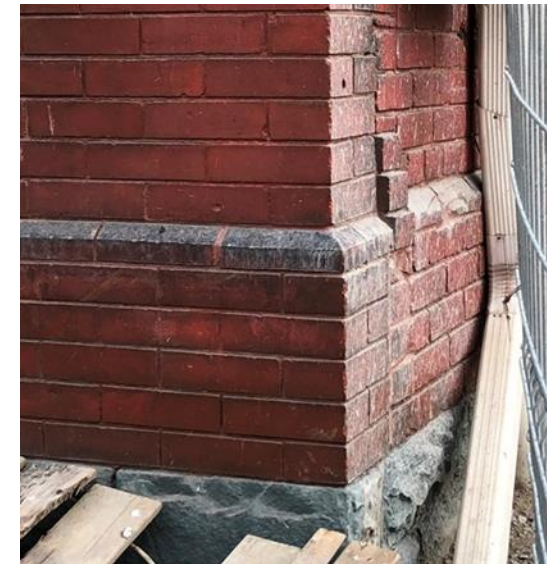
**PB24.5**  
**685 Queen Street East**



Dr. John B. Fraser house, with the principle, north elevation (left) and the side, west elevation (above)



## PB24.5 685 Queen Street East

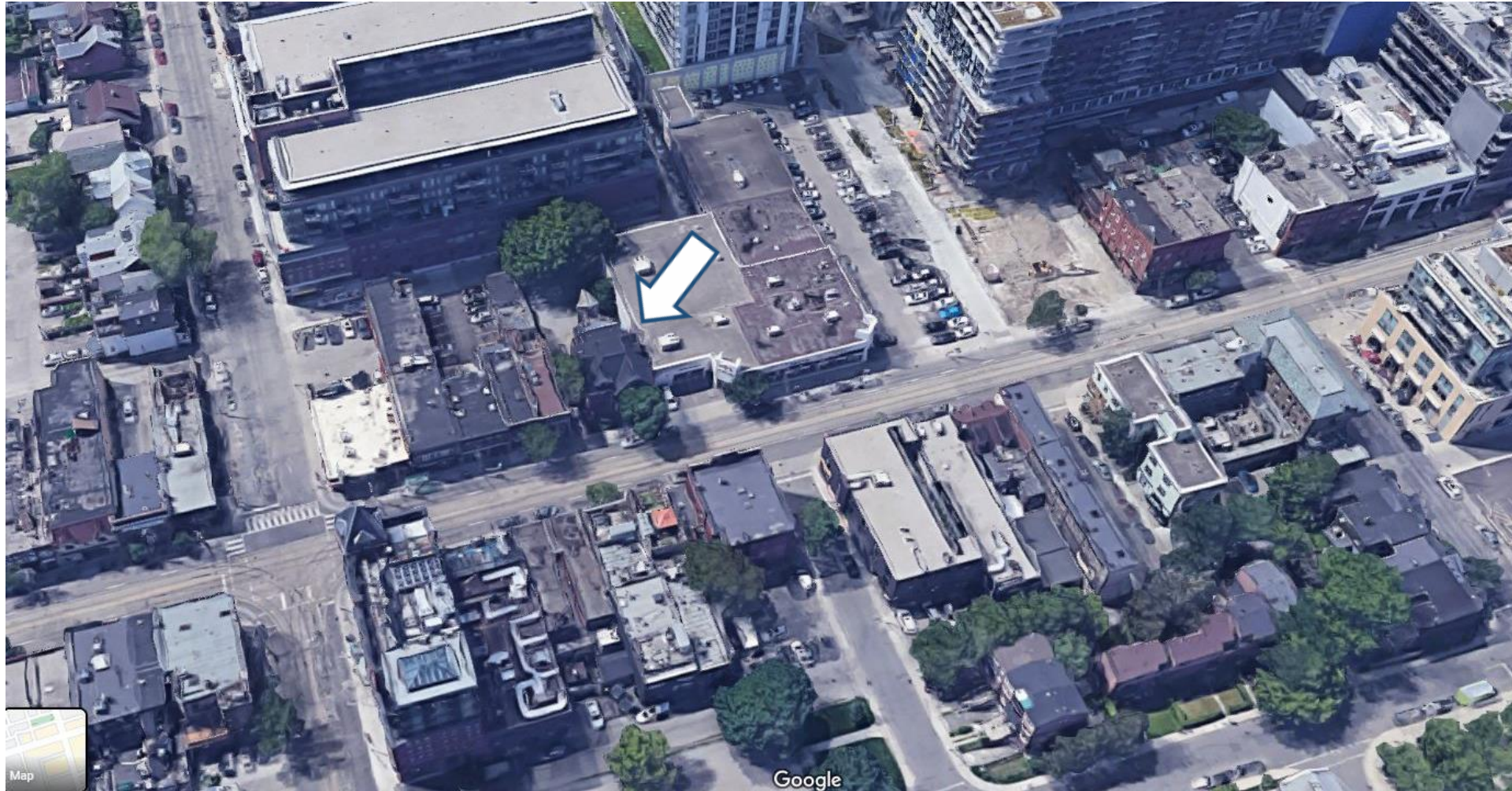


Period details including the stone column, the bracket and Tudor Revival half-timbering, the stained glass lunette window, the fine-faced brick with the precise mortar of the principle north elevation and the side entry of the doctor's office



## PB24.5 685 Queen Street East

Context: Aerial view looking south, shows the property on the south side of Queen Street East with surrounding low rise context of late 19<sup>th</sup> and early 20<sup>th</sup> century streetscape building and adjacent, recent, mid-high rise developments including Riverside Square which will include the Toyota showroom site (Google Maps, 2021)





## PB24.5 685 Queen Street East



Context: Looking east on Queen St East with the late 19<sup>th</sup> and early 20<sup>th</sup> century streetscape of Riverside (above and top right) and looking west with the Smith Block in the distance beyond the new development of Riverside Square (Google Street View and Heritage Planning, 2021)





---

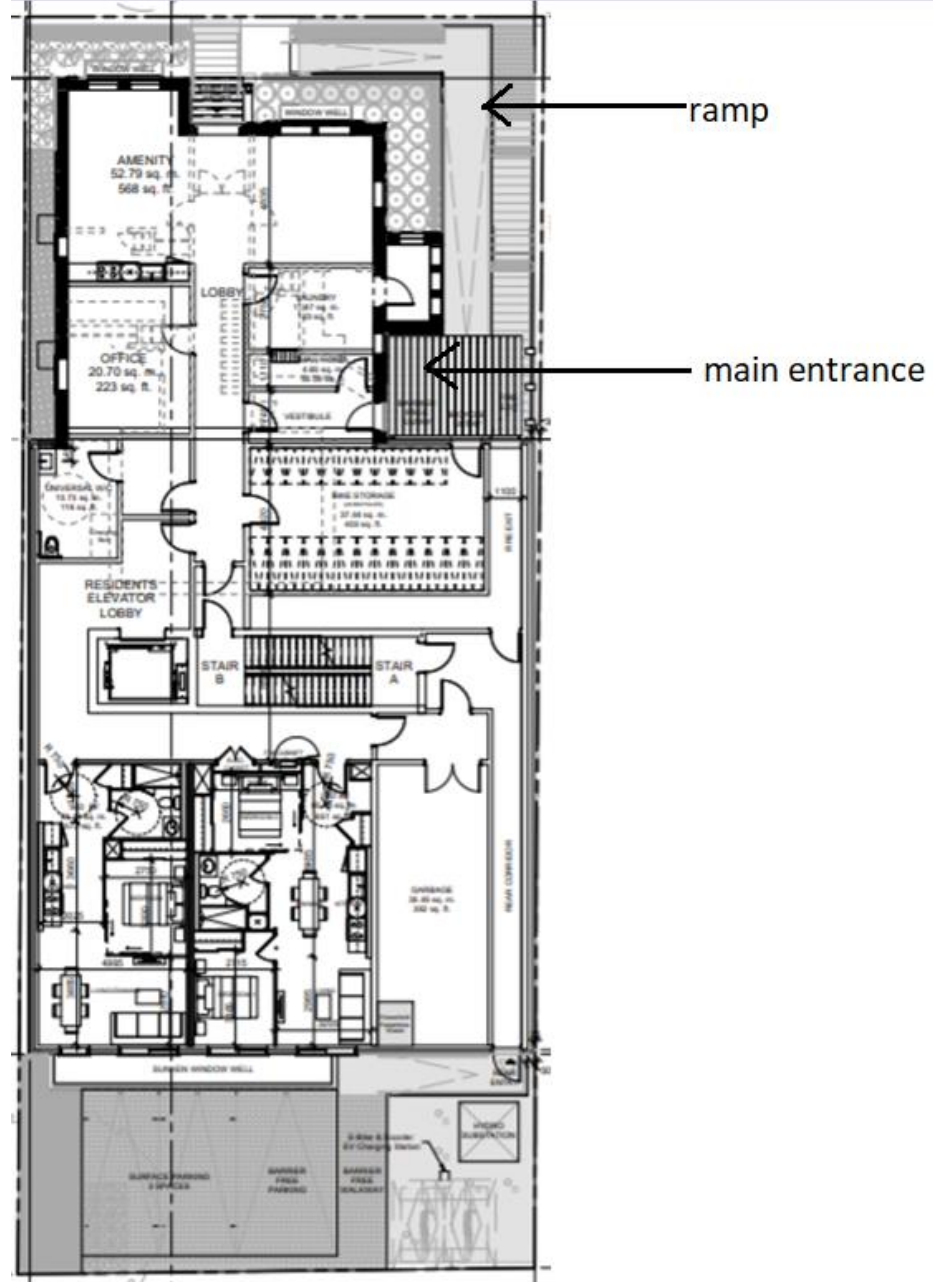
**PB24.5**  
**685 Queen Street East**

Rendering of the  
proposal showing  
the 4-storey  
addition at the rear



# PB24.5 685 Queen Street East

New accessible  
ramp and entrance  
behind the  
projecting bay





# PB24.5 685 Queen Street East

Relocated window opening and new entrance on east elevation

