

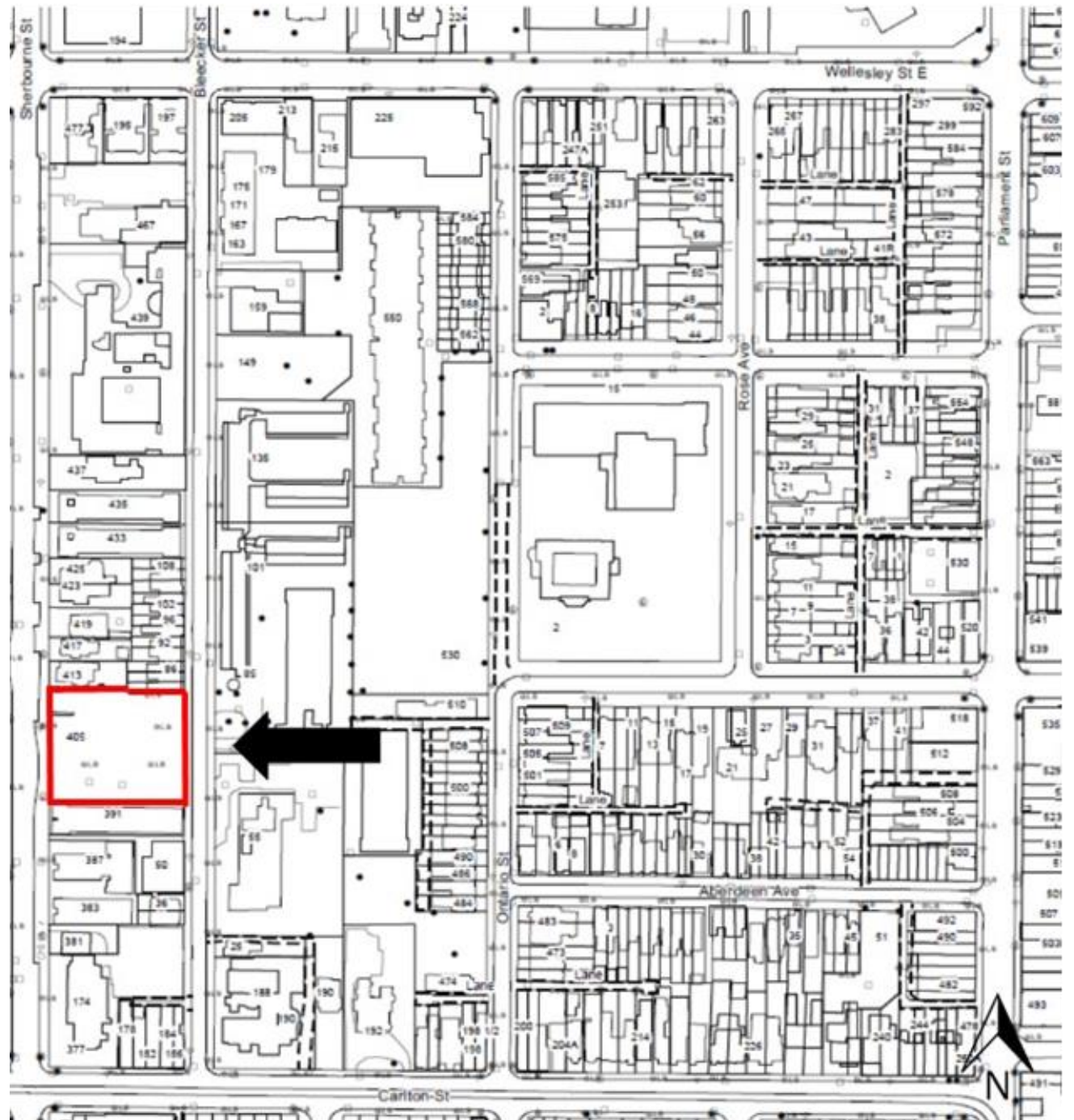


# **PB25.4**

## **Alterations to a Heritage Property Designated under Part V of the Ontario Heritage Act - 405 Sherbourne Street**

# PB25.4 405 Sherbourne Street

This location map is for information purposes only; the exact boundaries of the property are not show. The arrow marks the location of the site.



**PB25.4**  
**405 Sherbourne Street**

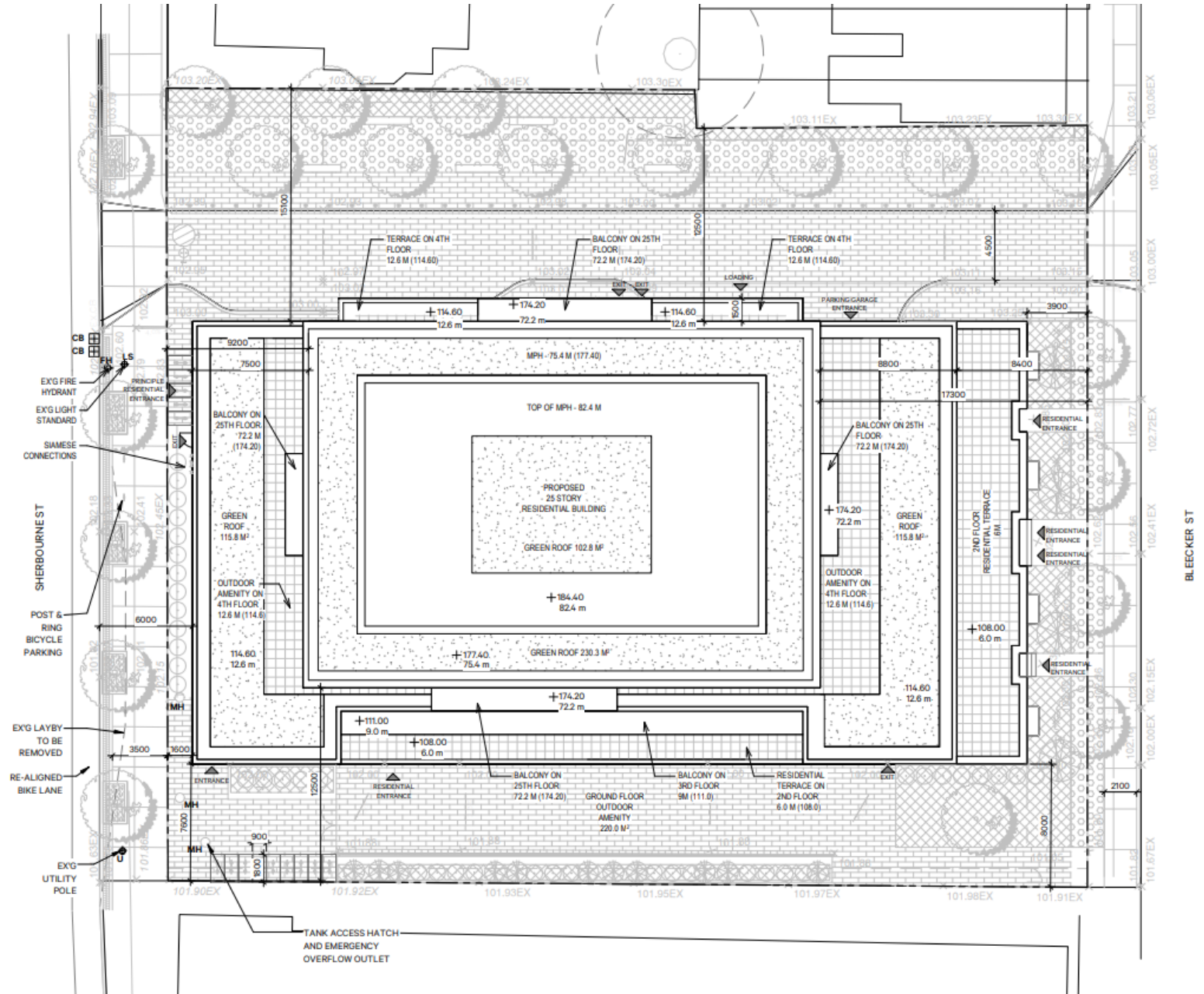


**PB25.4**  
**405 Sherbourne Street**



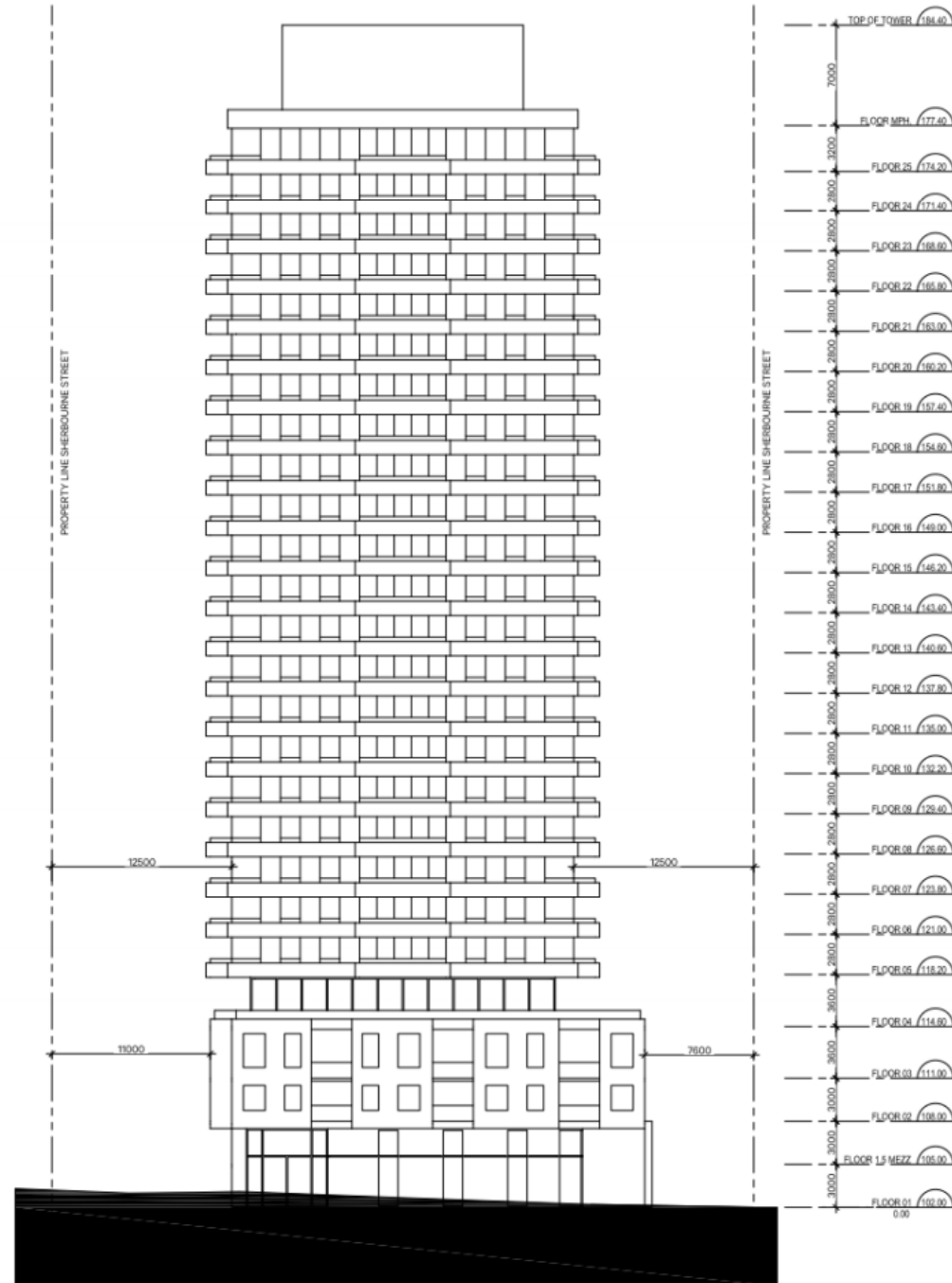
# PB25.4 405 Sherbourne Street

Site Plan



# PB25.4 405 Sherbourne Street

West Elevation Drawing  
(Fronting Sherbourne Street)



---

# PB25.4

## 405 Sherbourne Street

Modelling

Sherbourne Street



Figure 16: West side of Sherbourne Looking North

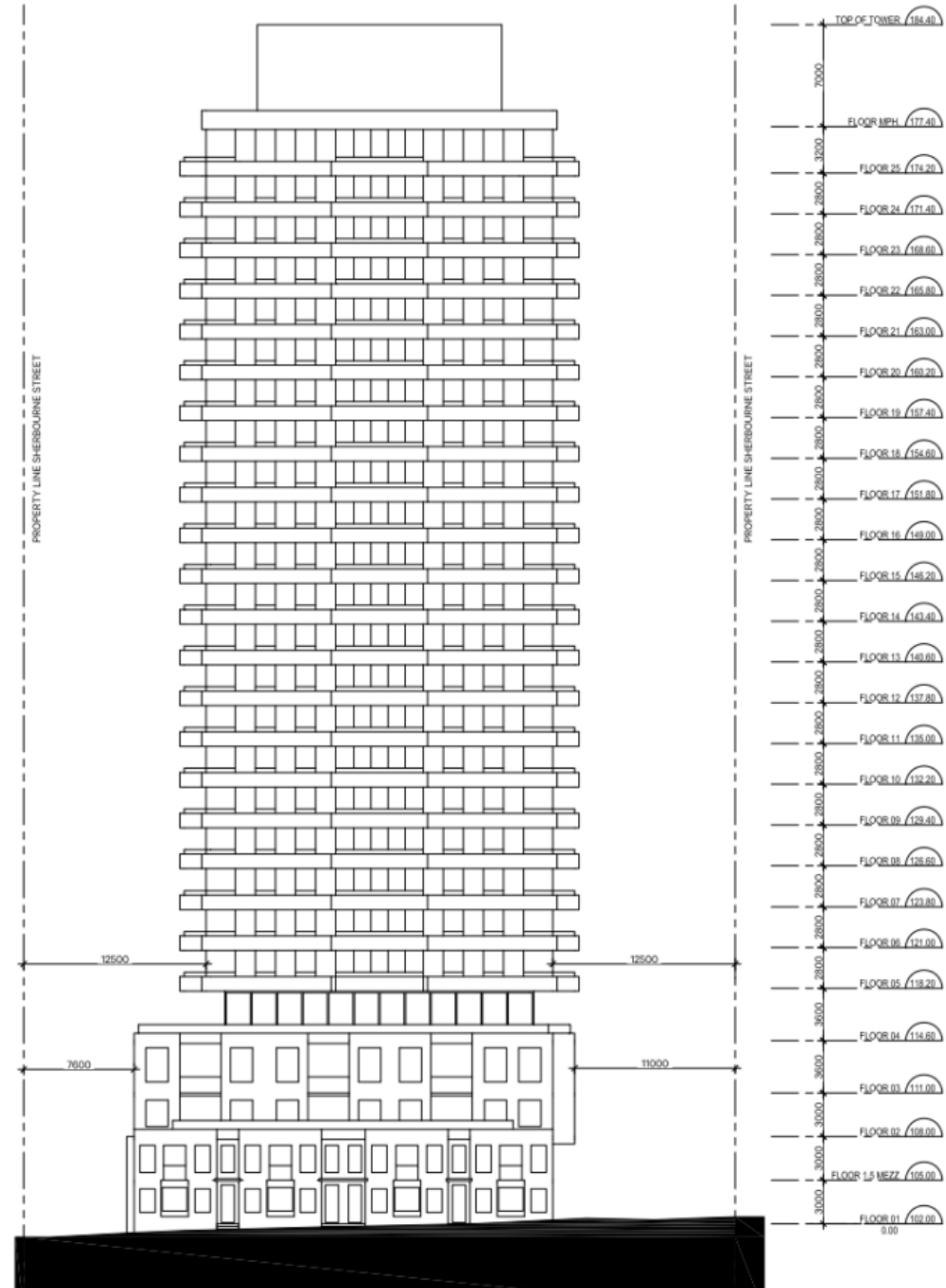


Figure 17: West side of Sherbourne Looking South

# PB25.4

## 405 Sherbourne Street

East Elevation Drawing  
(Fronting Bleecker Street)





---

**PB25.4**  
**405 Sherbourne Street**

East Elevation Drawing  
(Fronting Bleecker Street)

**Bleecker Street**



**Figure 18:** East side of Bleecker Looking North



**Figure 19:** East side of Bleecker Looking South

# PB25.4 405 Sherbourne Street



Landscaping Strategy

