



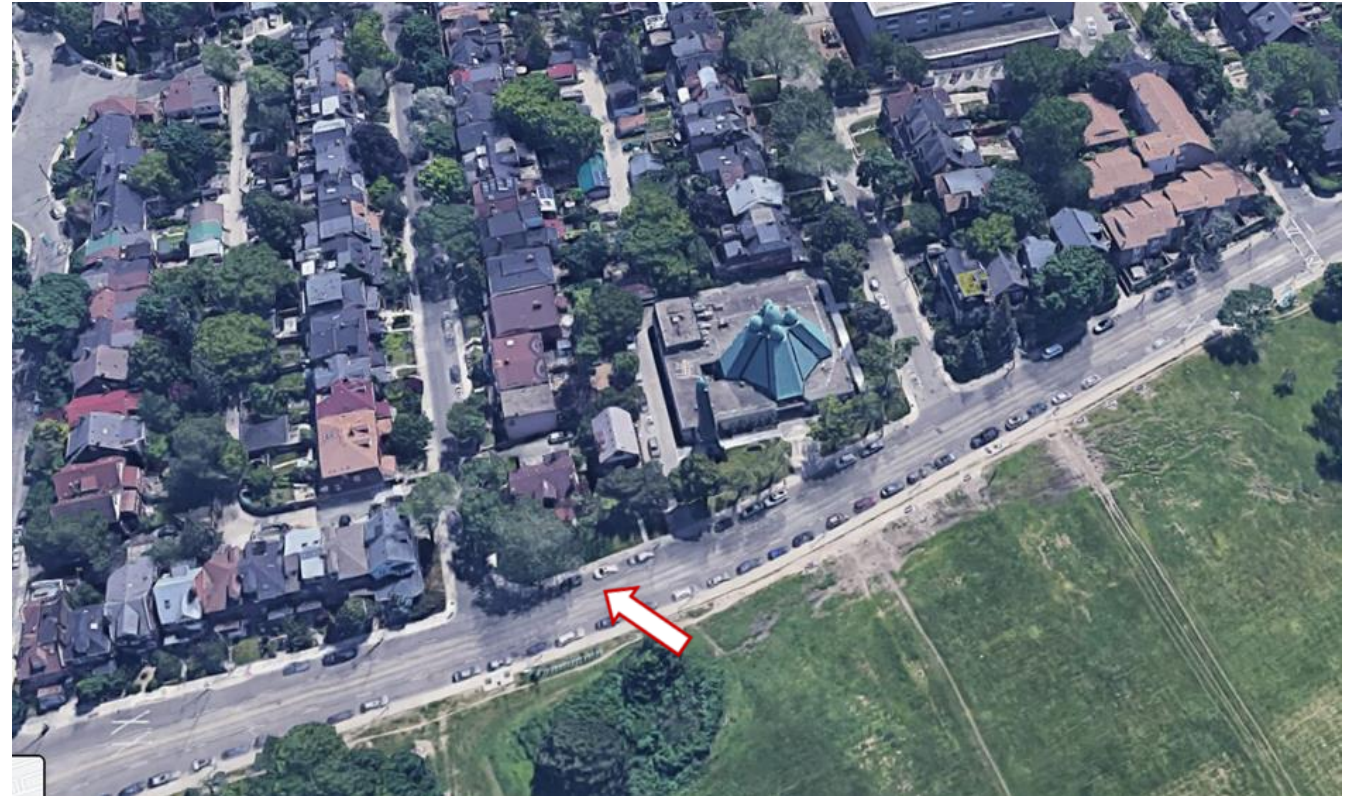
PB26.4

537 Broadview Avenue - Notice of Intention to Designate a Property Under Part IV, Section 29 of the Ontario Heritage Act

PB26.4 537 Broadview Avenue



This location map is for information purposes only; the exact boundaries of the property are not shown. The arrow marks the location of the site.



This aerial view, looking east, shows the location of the property opposite Riverdale Park in the Riverdale neighbourhood.

PB26.4
537 Broadview Avenue



Above: Current view of the principal, west façade of the Scott house at 537 Broadview Avenue with scaffolding
Top Right: View of the principal, west façade of the Scott house at 537 Broadview Avenue, pre-scaffolding, 2009

PB26.4
537 Broadview Avenue



Above: Principal, west façade of the Scott house, showing the details of the verandah, 2009



Above: Principal, west elevation of the Scott house, showing the various materials and the details of the eaves and verandah, 2009

PB26.4
537 Broadview Avenue



Above: View of the principal, west and side, south facades of the Scott House, 2009
Top Right: View of the side, north and principal west facades of the Scott house, 2009
Bottom Left: View of the side, north and rear, east facades of the Scott house, 2009

PB26.4
537 Broadview Avenue



St John's Presbyterian Church, 1907,
415 Broadview Avenue



Scott Mission, 1961, 502 Spadina Avenue,
(Google Streetview, 2021)

PB26.4 537 Broadview Avenue



Above: Aerial view of Riverdale and Riverdale Park looking west towards the Don River and the Don Valley Parkway
Top Right: View of the Scott House, the adjacent house-form building at 535 Broadview Avenue and the Holy Eucharist Ukrainian Catholic Church, 515 Broadview Avenue
Bottom Right: Typical early 20th century houses on Broadview Avenue, south of Bain Avenue

