

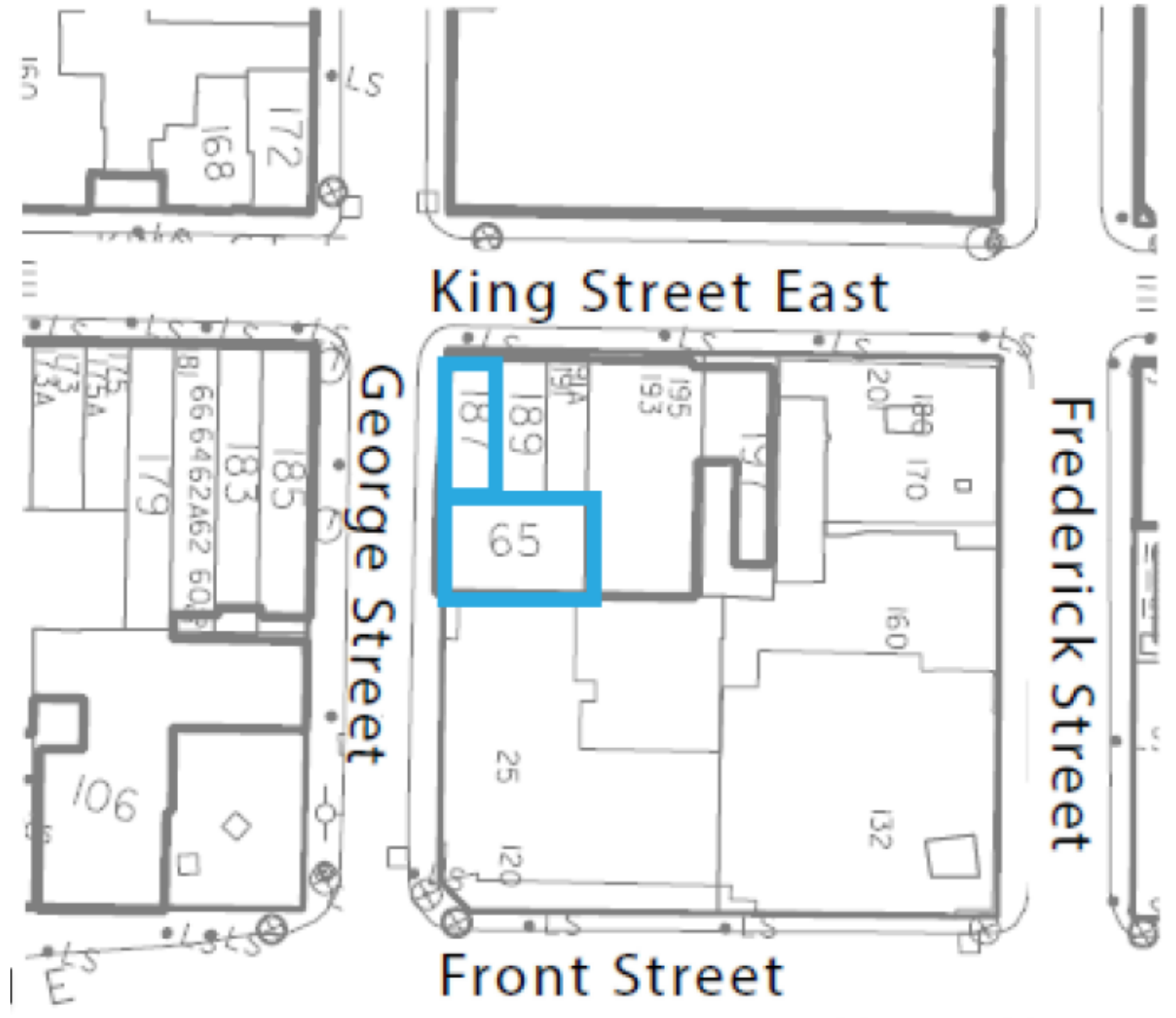


PB26.7

Alterations to Designated Heritage Property at 187 King Street East, Demolition and Reconstruction of Designated Heritage Property at 65 George Street, and Authority to Enter into a Heritage Easement Agreement

PB26.7
187 King St E & 65 George St

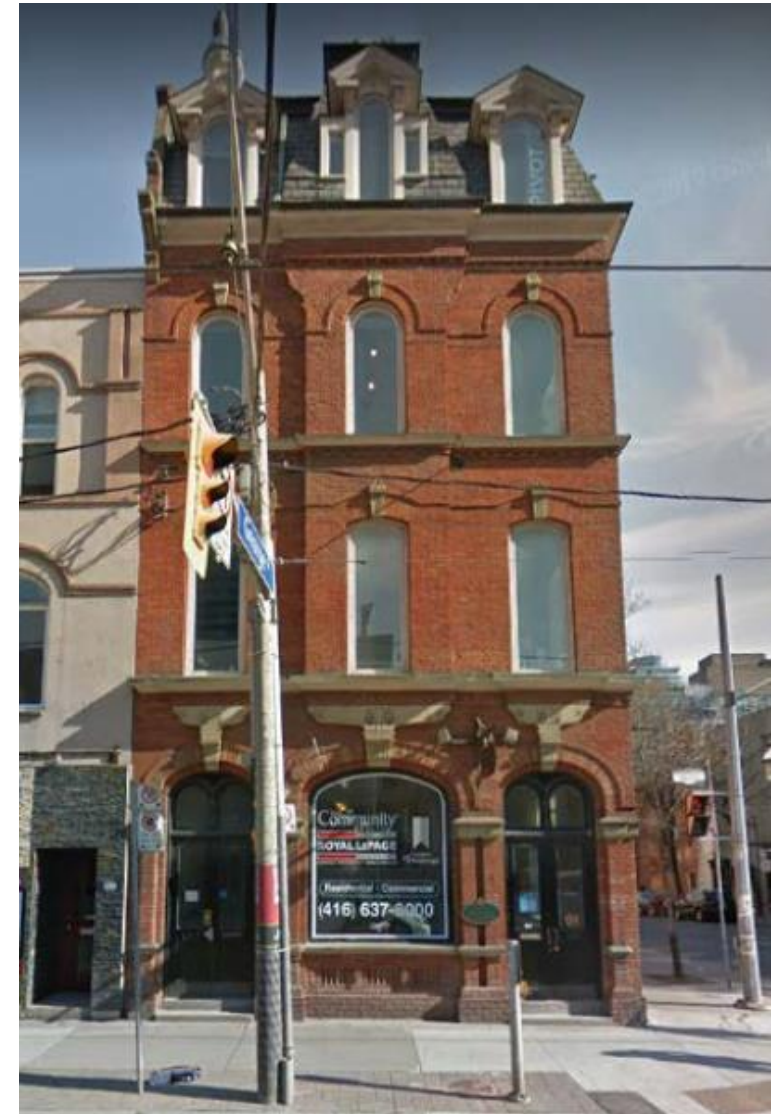
This location map is for information purposes only; the exact boundaries of the property are not shown. The arrow marks the location of the site.



PB26.7
187 King St E & 65 George St



View looking south east



North elevation – 187 King St E

PB26.7
187 King St E & 65 George St



West elevation – 65 George St



Previous interventions – 65 George St

PB26.7
187 King St E & 65 George St



Please note: Image is not exactly as proposed. The image shows a height of 16 storeys, the proposal is for 17 storeys. For illustrative purposes only.



Conceptual renderings of the Site (Core Architects, 2021).

PB26.7
187 King St E & 65 George St

-  DISMANTLE & REBUILD (REMOVAL)
-  CONSERVE (RETAIN)
-  NEW CONSTRUCTION

West elevation



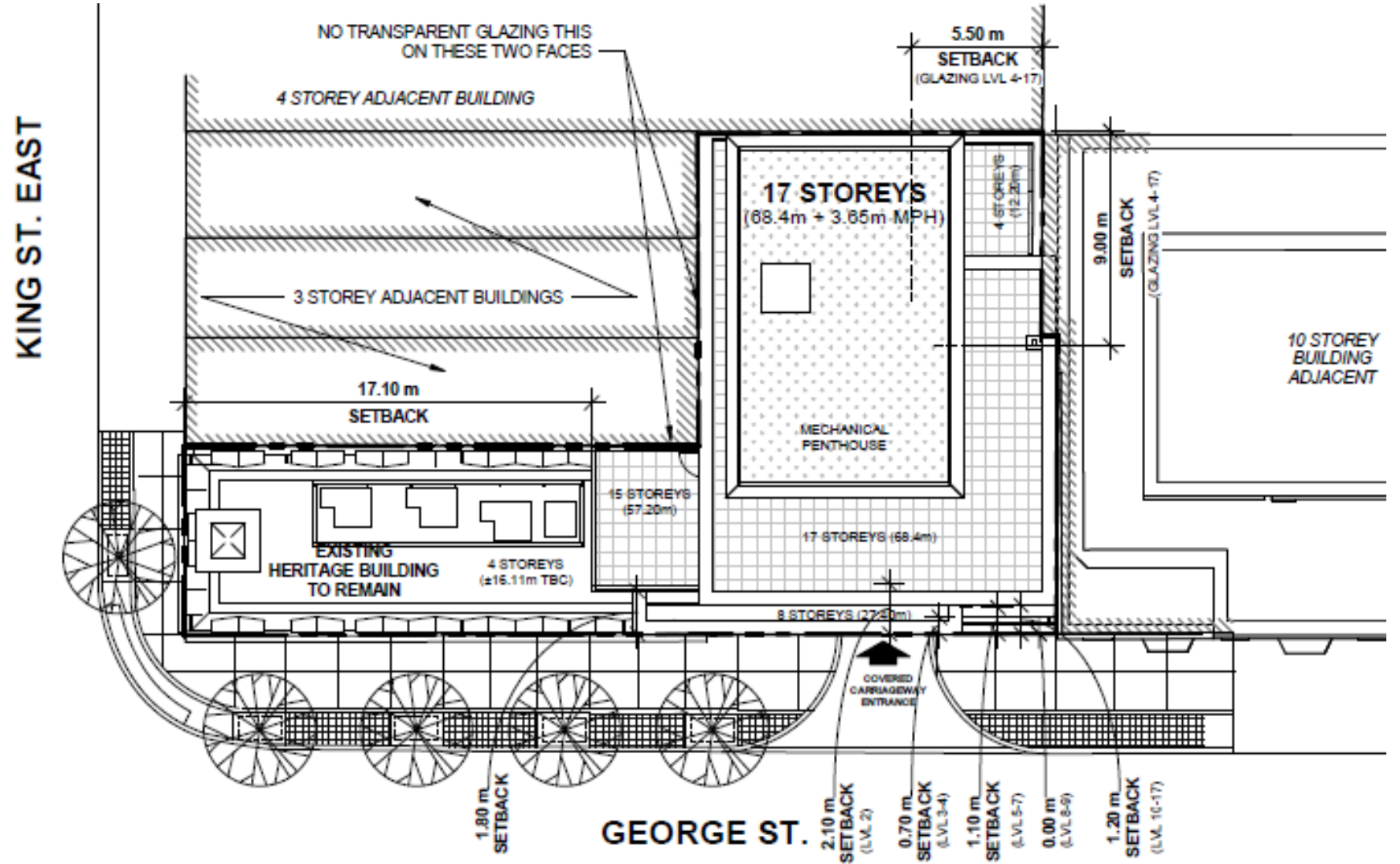
PB26.7
187 King St E & 65 George St

West elevation



PB26.7

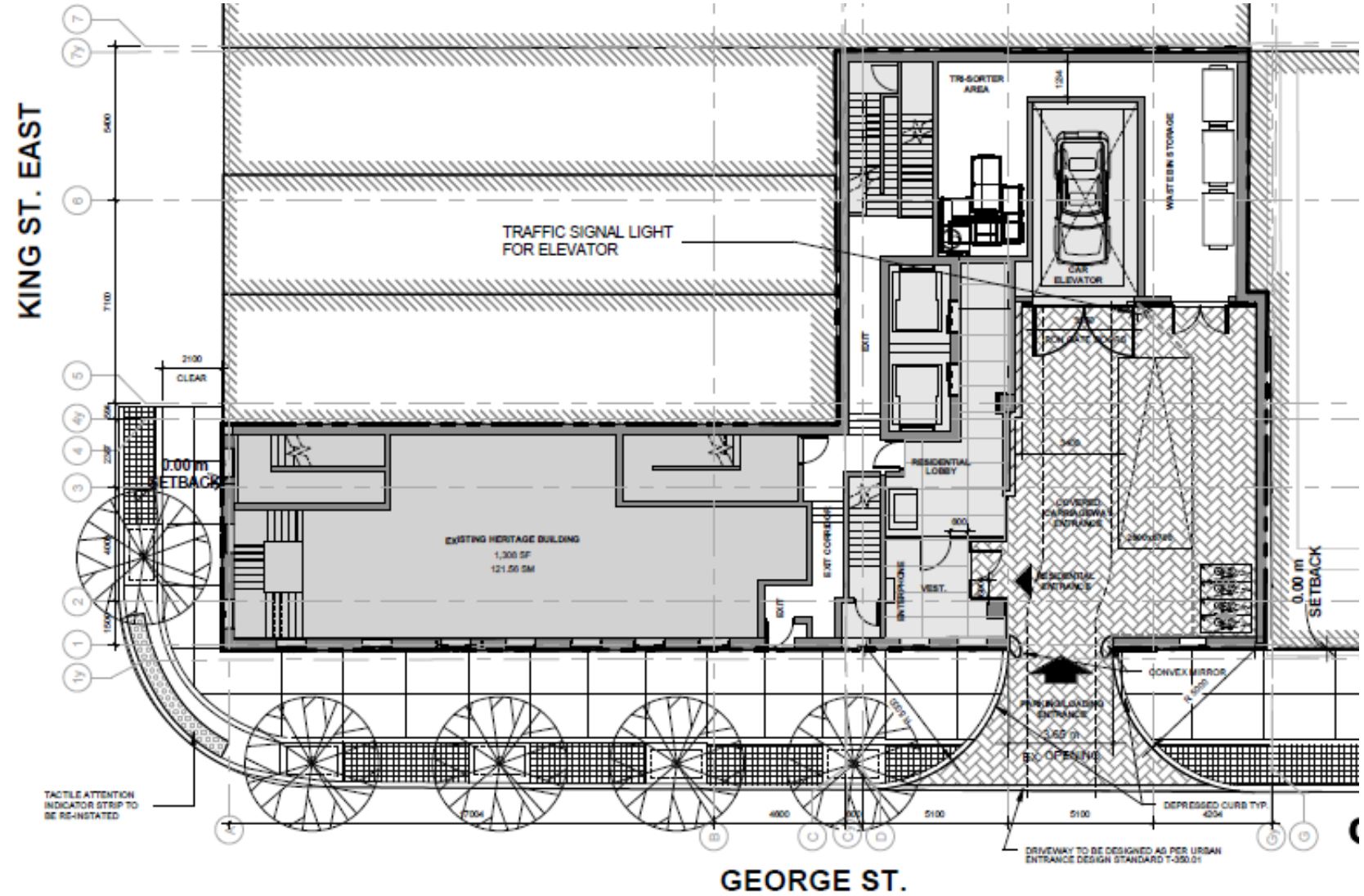
187 King St E & 65 George St



Site plan

PB26.7

187 King St E & 65 George St

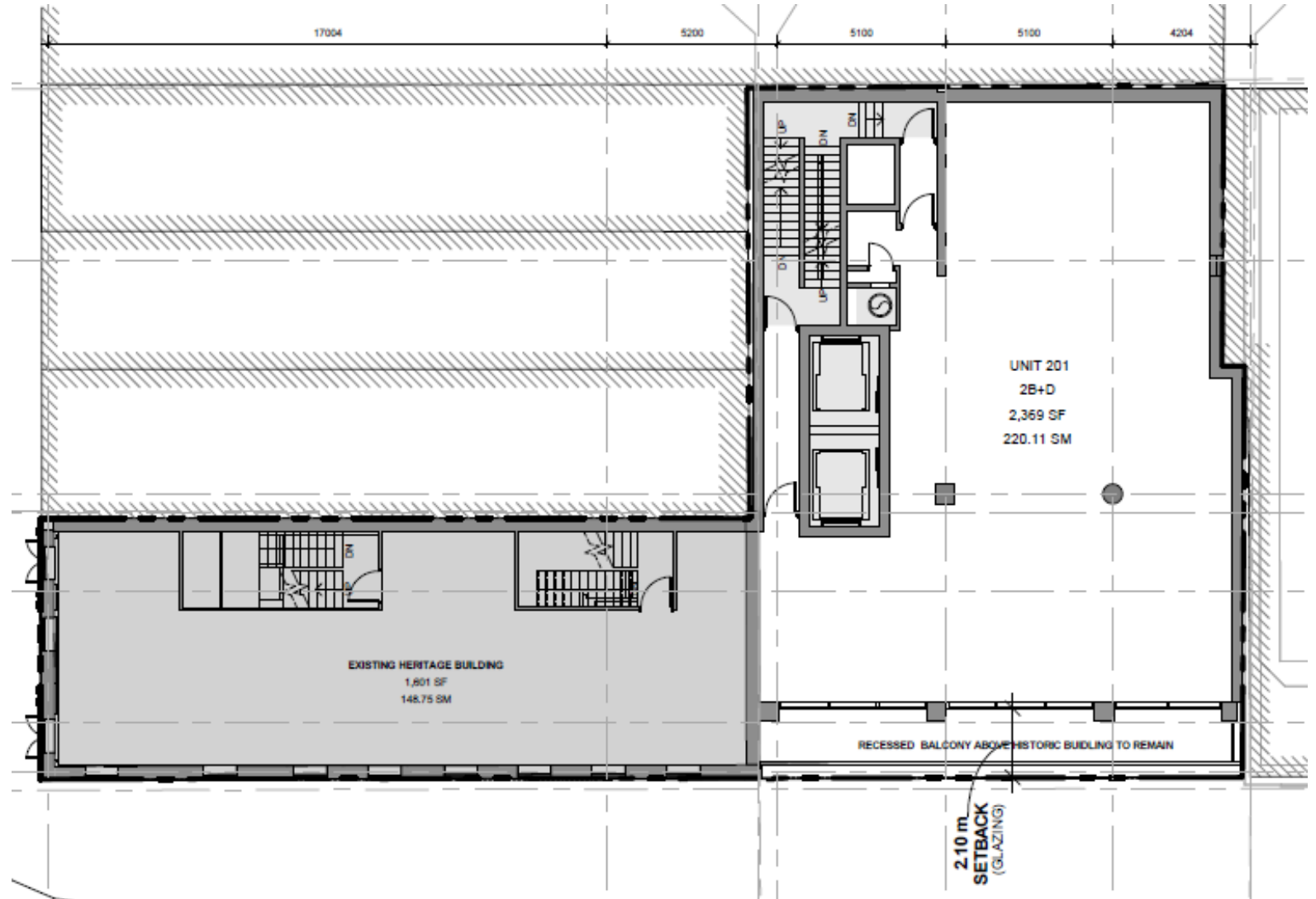


Ground floor plan

PB26.7

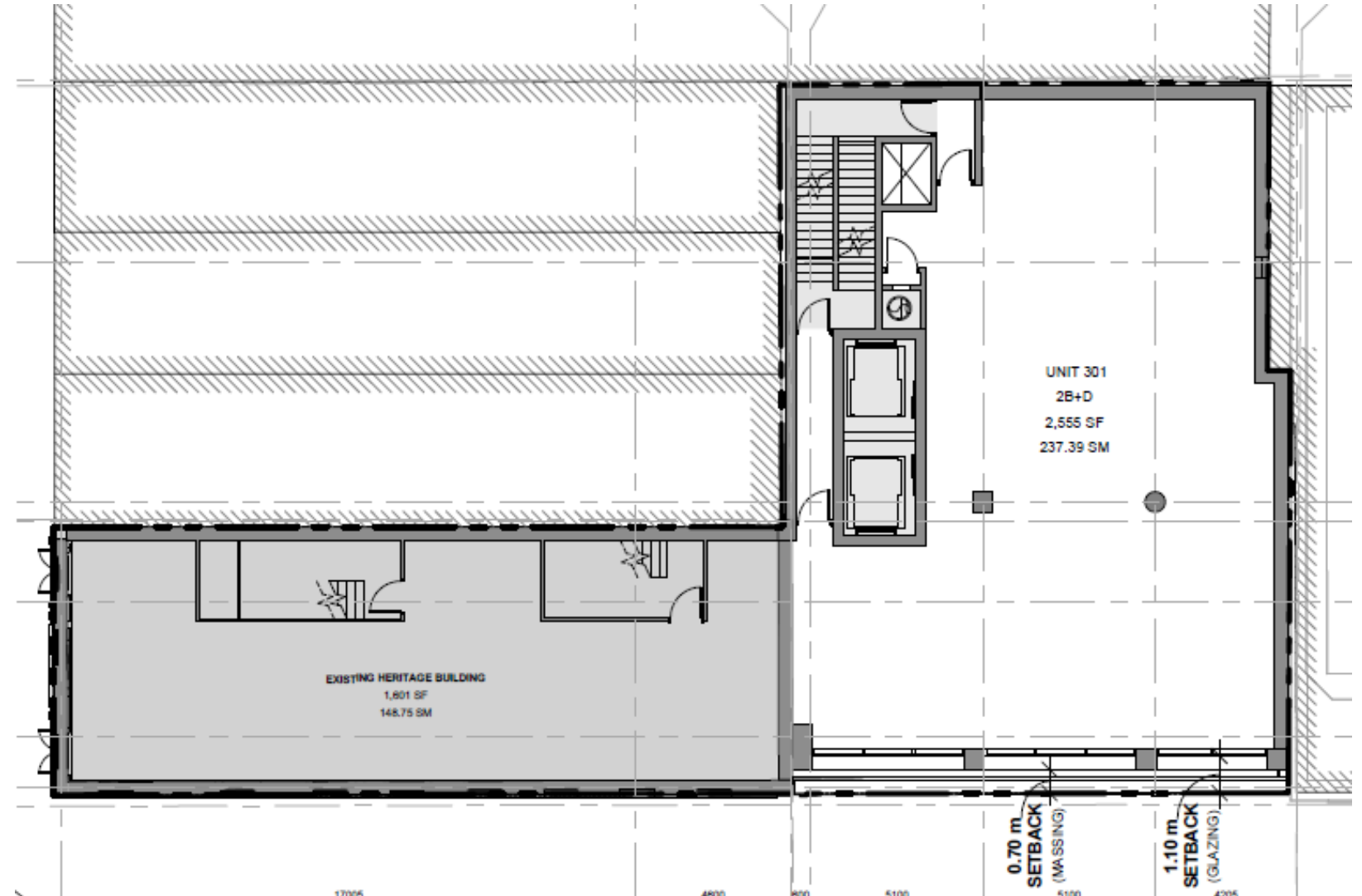
187 King St E & 65 George St

Second storey
above 65 George
St set back 2.10m



PB26.7
187 King St E & 65 George St

Level 3



PB26.7

187 King St E & 65 George St

