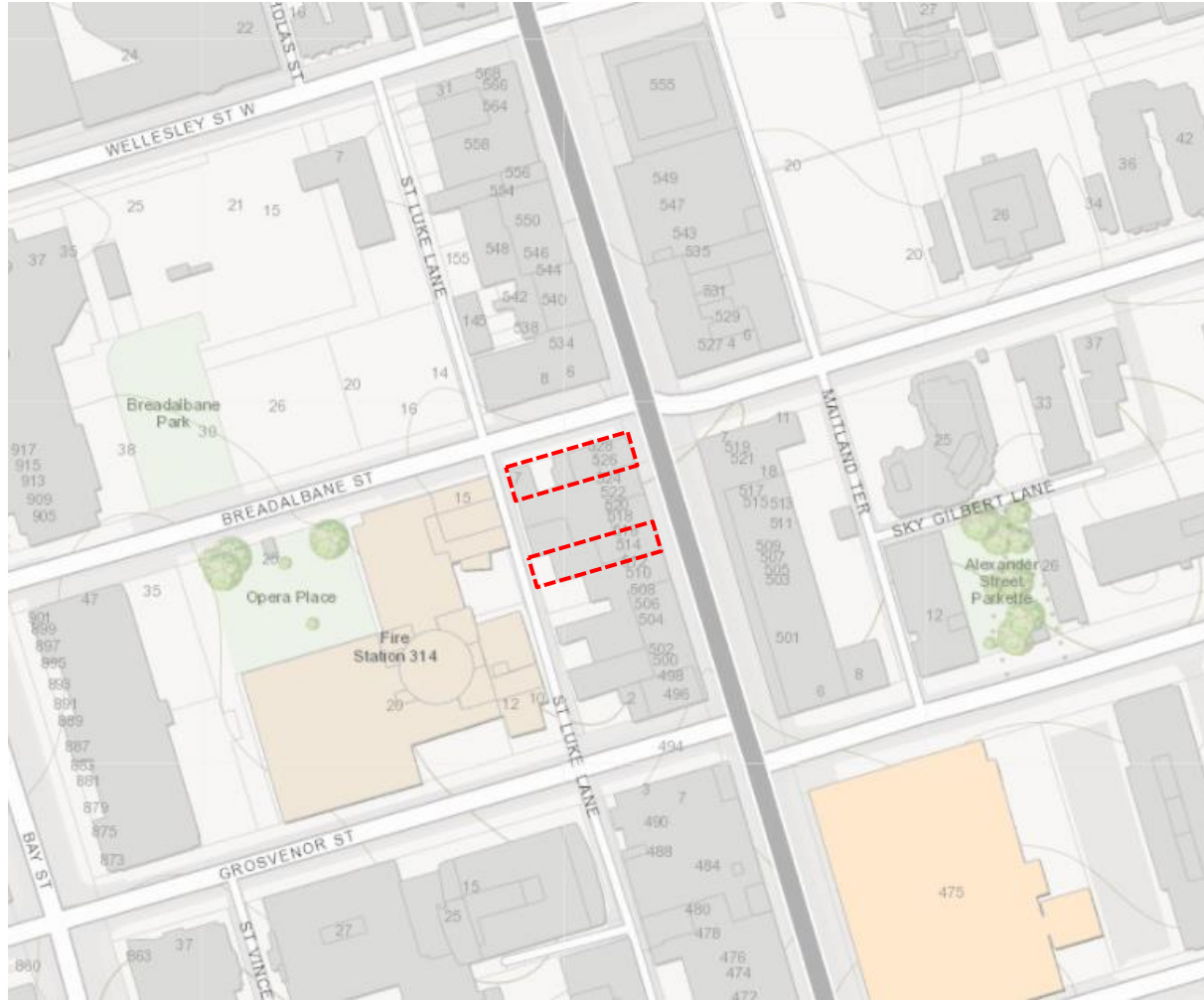




PB28.4

516 and 526 Yonge Street - Notice of Intention to Designate a Property under Part IV, Section 29 of the Ontario Heritage Act

PB28.4 516 and 526 Yonge Street



Location map showing the approximate location and boundaries of the properties at 116 (bottom) and 126 (top) Yonge Street. This location map is for information purposes only; the exact boundaries of the property are not show. The red outlines mark the locations of the sites.

PB28.4 516 and 526 Yonge Street



Current photographs of the properties at 516 (left) and 526 (right) Yonge Street. [Heritage Planning, 2021]

PB28.4 516 and 526 Yonge Street



Current photograph looking west, showing the principal (east) elevation of the building at 516 Yonge Street. [Heritage Planning, 2021]



Context view looking west from Yonge Street, showing the property at 516 Yonge Street [Google Street View, 2021]

PB28.4 516 and 526 Yonge Street



City of Toronto Archives, Series 372, s0372_ss0070_it0012

1914 archival photograph showing 516 Yonge Street. At this time, the commercial building retained many of its original Second Empire features. [City of Toronto Archives]



1924 architectural drawing of 516 Yonge Street's east elevation, by architect Oluf Albrechtsen, showing proposed alterations including changes to the storefronts, second storey window openings, and dormers. [City of Toronto Building Records]

PB28.4 516 and 526 Yonge Street



City of Toronto Archives, Fonds 1526, File 2, Item 70



1974 archival photograph showing 516 Yonge Street (left) [City of Toronto Archives], and context view looking west from Yonge Street, showing 516 Yonge Street (right) [Google Street View, 2021]

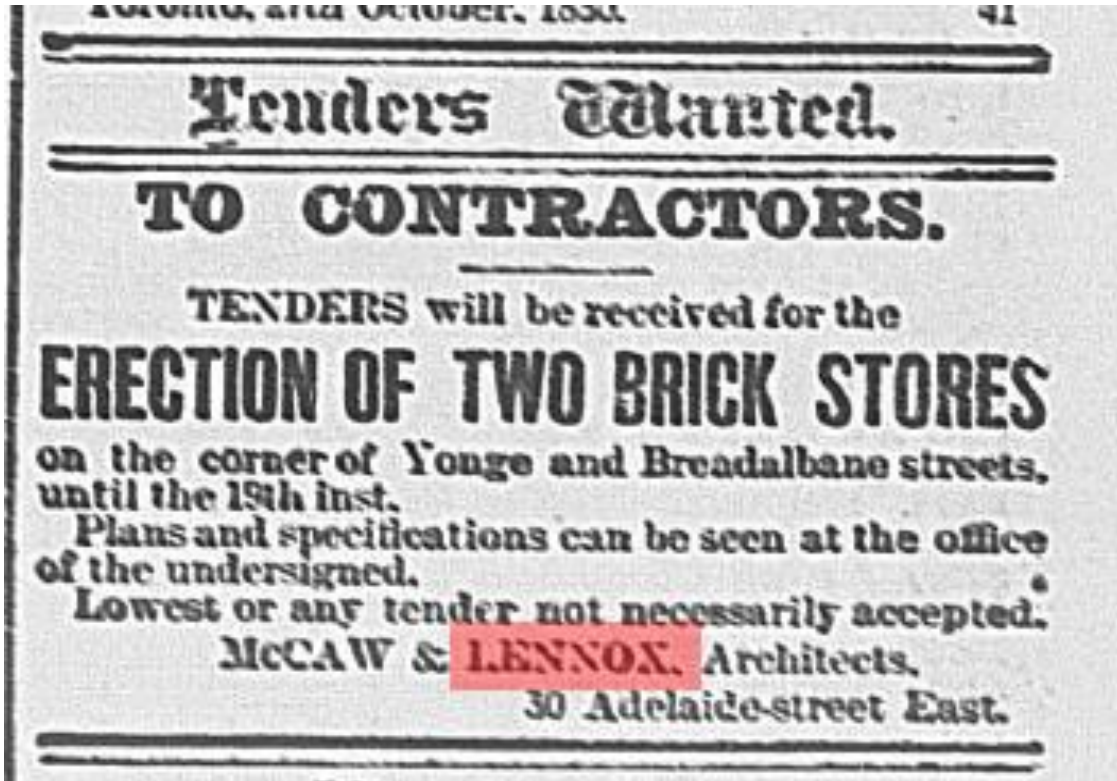
PB28.4 516 and 526 Yonge Street



Current photographs of the principal (east) and secondary (north) elevations of 526 Yonge Street. [Heritage Planning, 2021]

PB28.4

516 and 526 Yonge Street



Call to tender for the "erection of two brick stores on the corner of Yonge and Breadalbane streets" by McCaw & Lennox, Architects [The Globe, November 11, 1880]



City of Toronto Archives, Fonds 1826, File 2, Item 69

1971 archival photograph of 526 Yonge Street. Note the original slate roof and iron cresting above the upper cornice of the central tower. [City of Toronto Archives]

PB28.4 516 and 526 Yonge Street



Context view looking west from Yonge Street, showing the properties at 526 Yonge Street (left) [Google Street View, 2021], and context view looking west from Yonge Street, showing the properties at 516 Yonge Street and 526 Yonge Street (right) [Google Street View, 2015]