

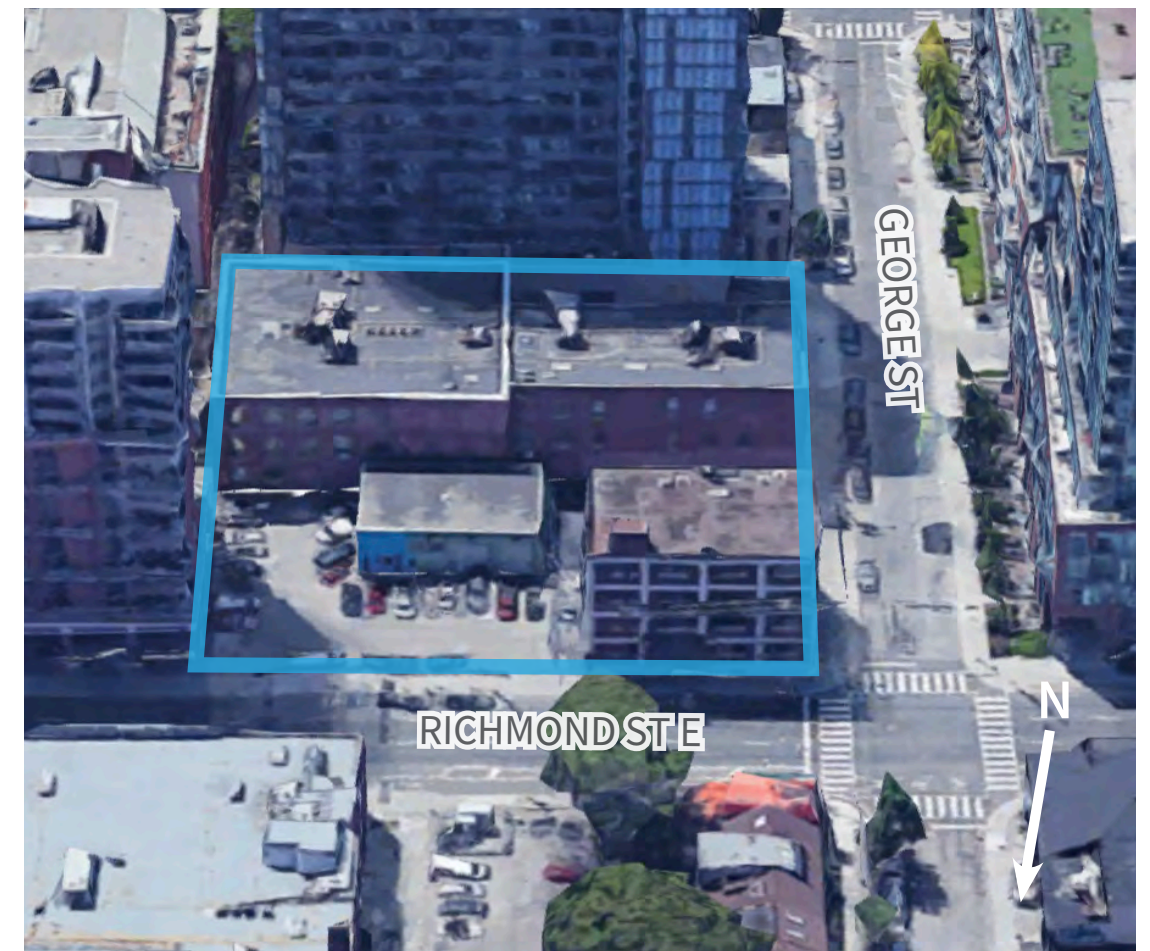
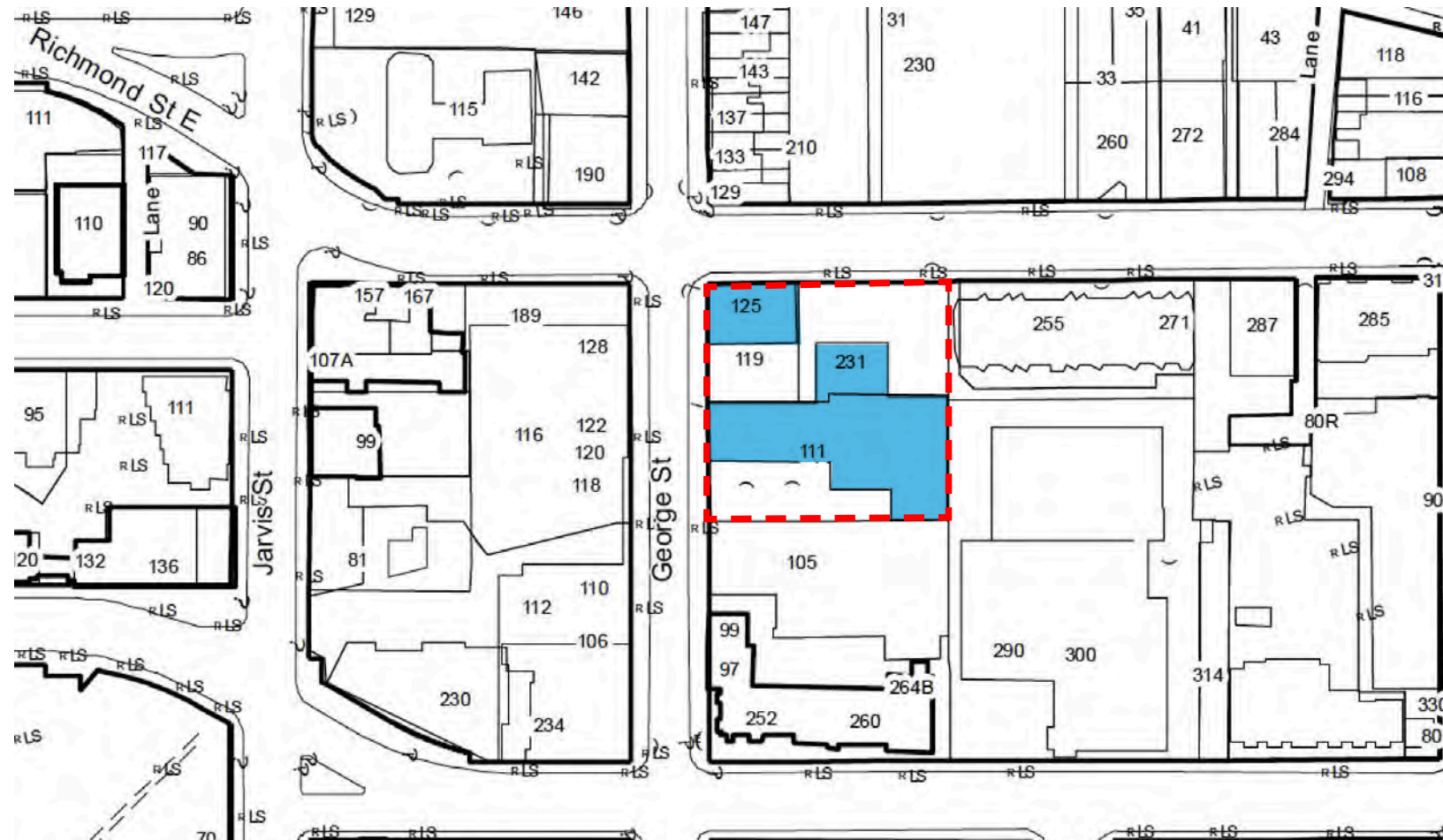
109-125 GEORGE STREET AND 231 RICHMOND STREET EAST

TORONTO PRESERVATION BOARD

September 1, 2021

ERA

CONTEXT



CONTEXT



CONTEXT

125 George Street

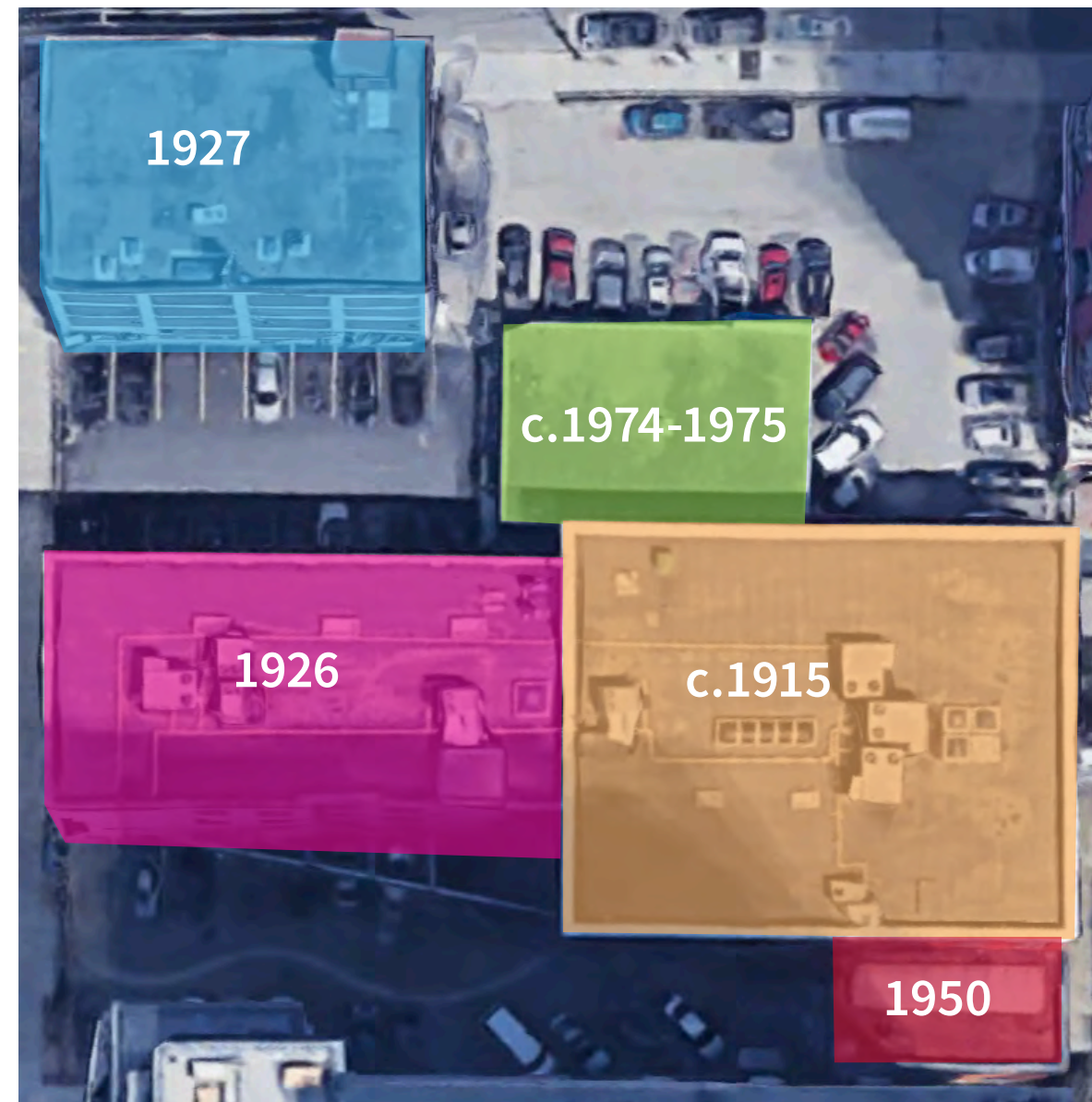
- 1927: four-storey building
- Various alterations (e.g. parapet, openings)

109-117 George Street

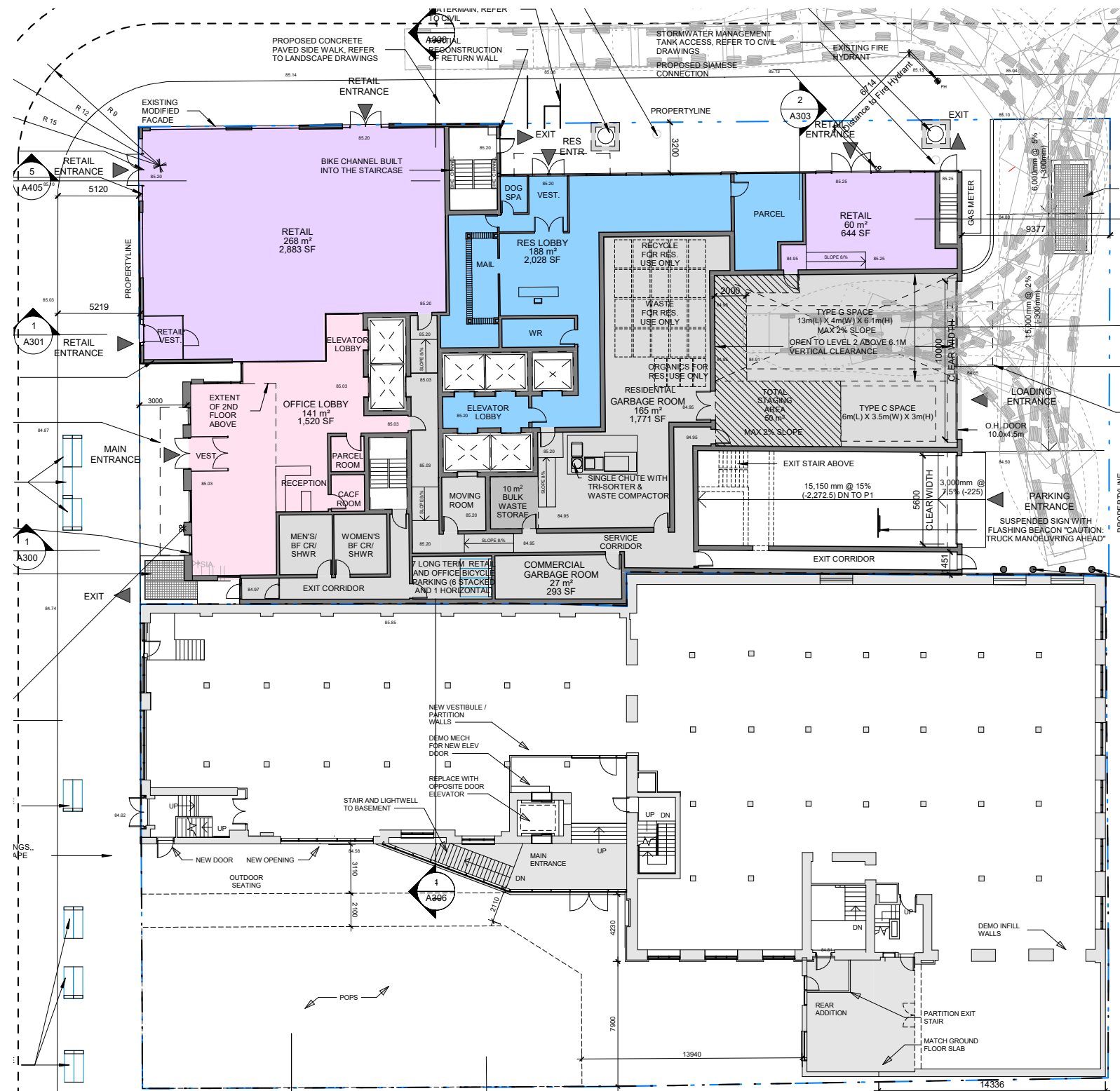
- c. 1915: three-storey building
- 1926: three-storey addition
- 1950: two-storey addition
- Various alterations (e.g. recladding of south elevation, window replacement, facade modifications)

231 Richmond Street East

- c. 1975: two-storey building



SITE STRATEGY – 109-125 George Street



- LOBBY
- COMMERCIAL RETAIL UNIT
- LOBBY

CONSERVATION STRATEGY – STREET ELEVATIONS

GEORGE ELEVATION



RICHMOND ELEVATION



CONSERVATION STRATEGY – 125 GEORGE



Existing step removed to allow for barrier-free access

CONSERVATION STRATEGY - 109 GEORGE



EXISTING



PROPOSED

CONSERVATION STRATEGY



125 GEORGE



109 GEORGE