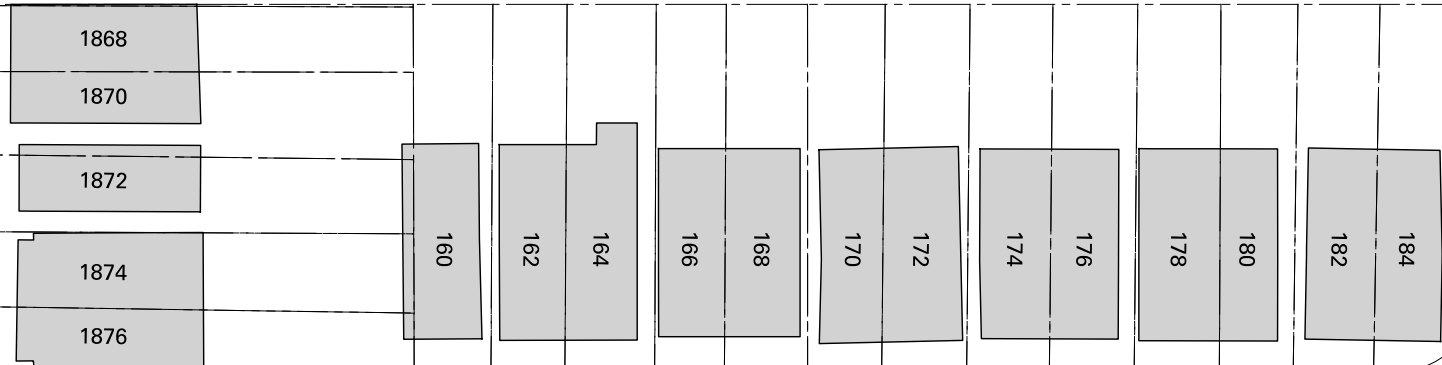


GERRARD ST E



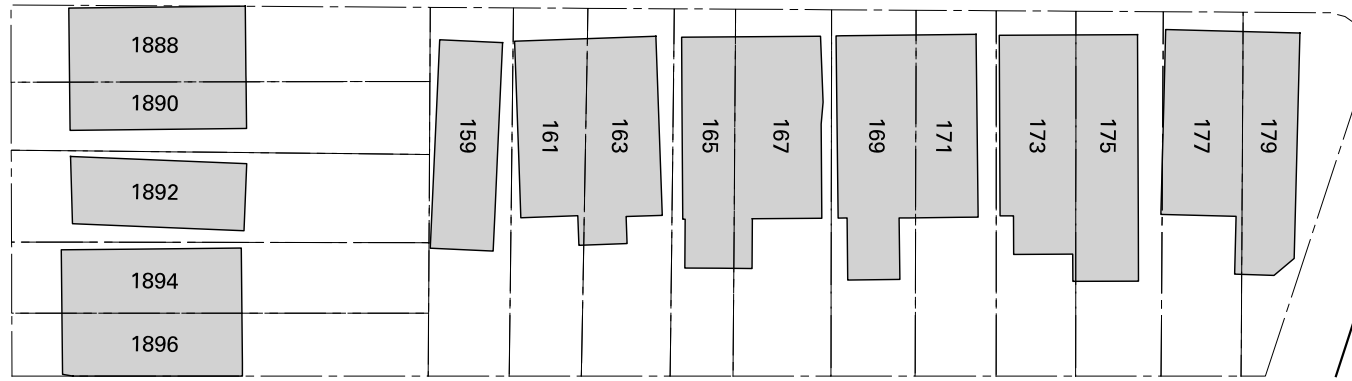
B

A

KINGSMOUNT PARK RD



A



\*

WILDWOOD CRES

A



B



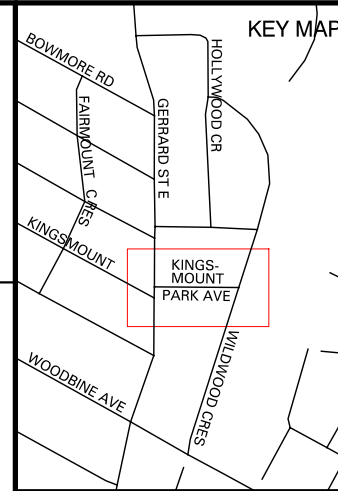
PROPOSED TWO-WAY SPEED HUMP



DISCLAIMER:

THIS DRAWING WAS PREPARED UPON REQUEST FROM THE WARD COUNCILLOR

\* PLACEMENT OF THIS SPEED HUMP DOES NOT COMPLY WITH THE CITY OF TORONTO'S TRAFFIC CALMING POLICY.



# SPEED HUMP LOCATIONS PLAN

## KINGSMOUNT PARK AVE: GERRARD ST E TO WILDWOOD CRES