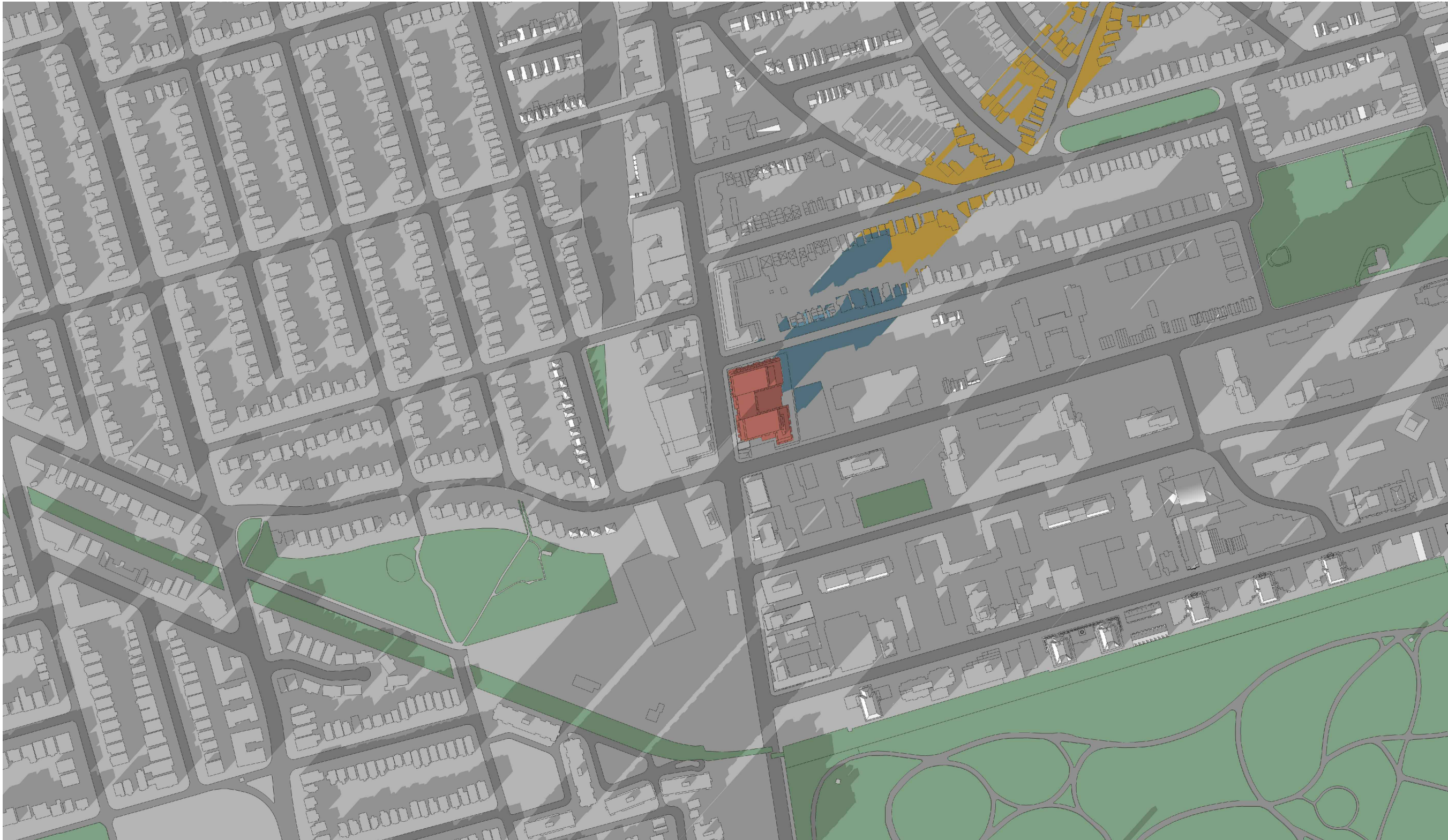




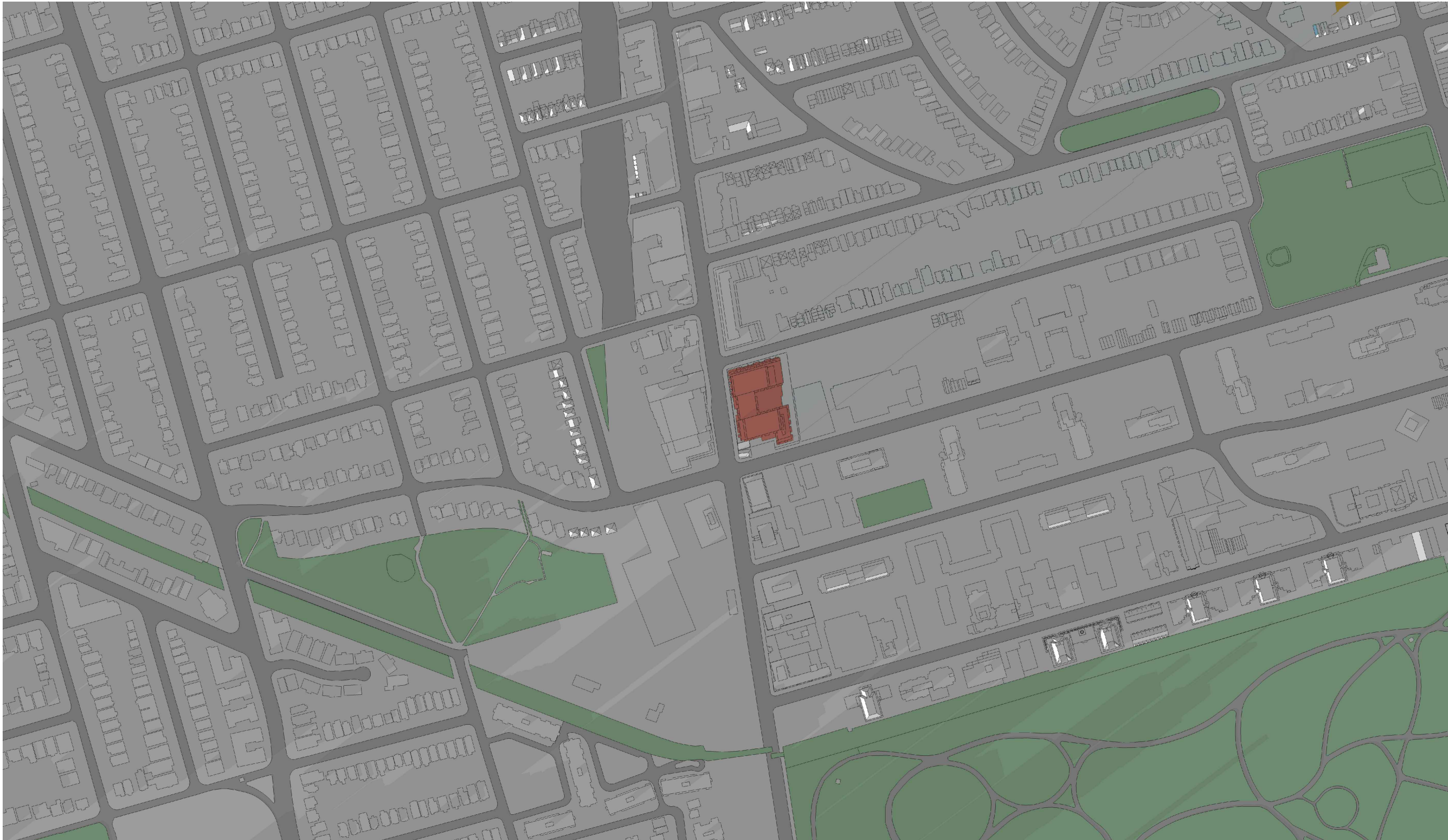
2
A112
DEC 21 - 14:18



3
A112
DEC 21 - 15:18



1
A112
DEC 21 - 13:18



4
A112
DEC 21 - 16:18

AS PER MID-RISE
DESIGN
@ 37.4m SAME AS
1985 YONGE)

PROPOSED 1951
YONGE ST.
SHADOW
(NORTH TOWER 38
STOREYS
135.80m @ T/O MPH
ROOF
SOUTH TOWER 45
STOREYS
157.10m @ T/O MPH
ROOF)

"WITH PREJUDICE" AND "PUBLIC"

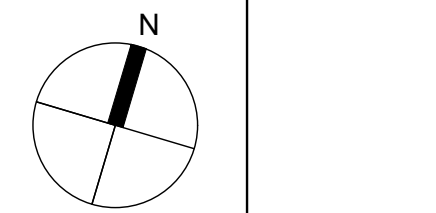
| | | |
|----|------------------------|--------------|
| 07 | PROGRESS ISSUE | 24 JAN 2022 |
| 06 | PROGRESS ISSUE | 17 NOV 2021 |
| 05 | PROGRESS ISSUE | 29 JULY 2021 |
| 04 | RE-ISSUED FOR REZONING | 14 AUG 2020 |
| 03 | PROGRESS ISSUE | 19 MAY 2020 |
| 02 | PROGRESS ISSUE | 20 DEC 2019 |
| 01 | ISSUED FOR REZONING | 07 MAR 2017 |

| | | |
|--|-----------|------|
| No. | Revisions | Date |
| ALL DRAWINGS, SPECIFICATIONS AND RELATED DOCUMENTS ARE THE COPYRIGHT PROPERTY OF THE ARCHITECT AND MUST BE RETURNED UPON REQUEST. REPRODUCTION OF DRAWINGS, SPECIFICATIONS AND RELATED DOCUMENTS IN PART OR WHOLE IS FORBIDDEN WITHOUT THE ARCHITECT'S WRITTEN PERMISSION. | | |

CONTRACTOR MUST CHECK AND VERIFY ALL DIMENSIONS ON THE JOB.

COREARCHITECTS
CORE ARCHITECTS INC.
130 QUEENS CLAY EAST, SUITE 700, WEST TOWER
TORONTO, ON CANADA M5A 0P5
T +1 416 343 0400 • F +1 416 343 0401
INFO@COREARCHITECTS.COM
WWW.COREARCHITECTS.COM

1951 YONGE ST.
Toronto, Ontario



| | |
|---------------|--------------------------|
| Drawn MG | Scale N.T.S. |
| Checked EM | Date 23 NOVEMBER 2021 |

Title
SHADOW STUDY - DEC 21

| | |
|-----------------------|----------------------------|
| Project No. 16-241 | Drawing No. A112 |
|-----------------------|----------------------------|