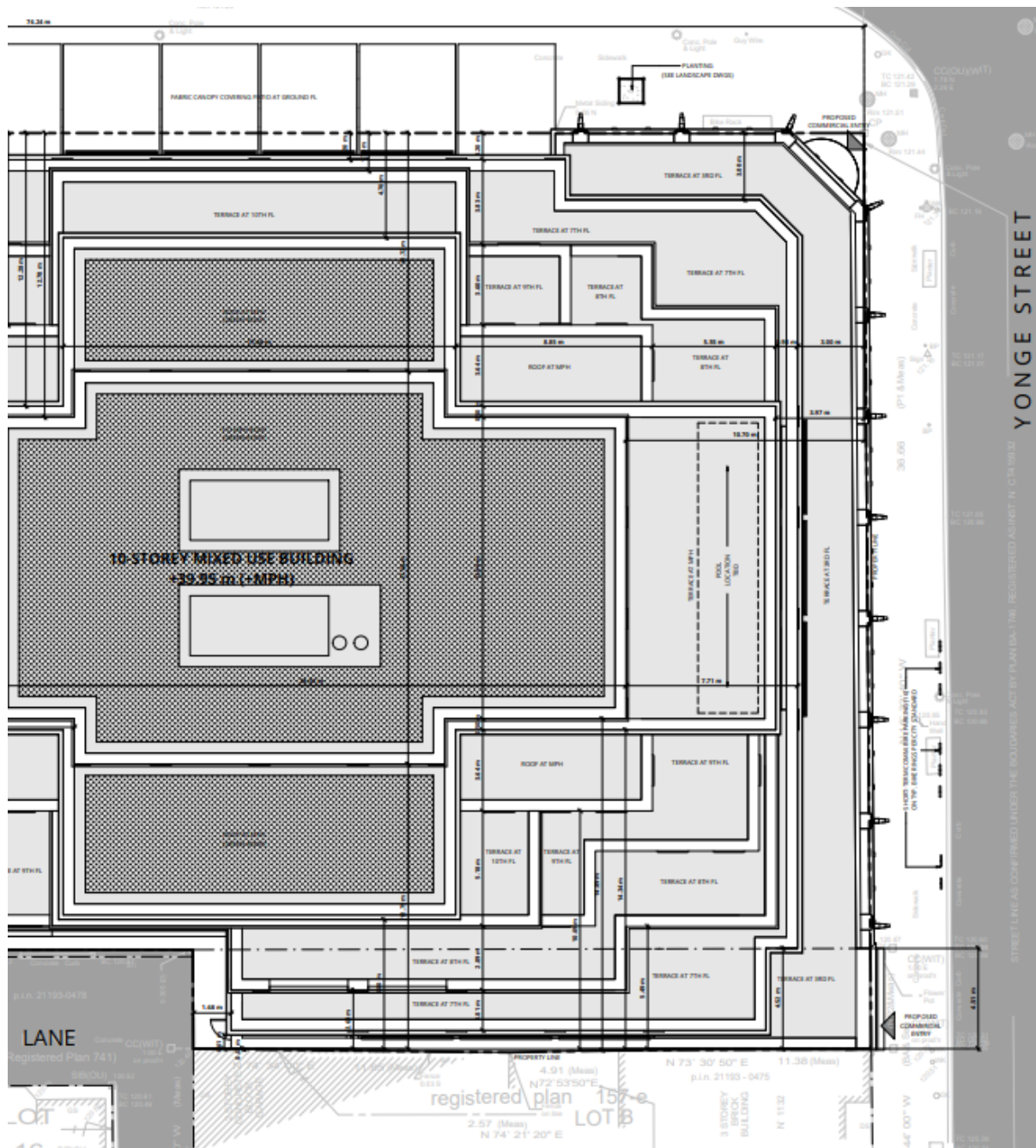
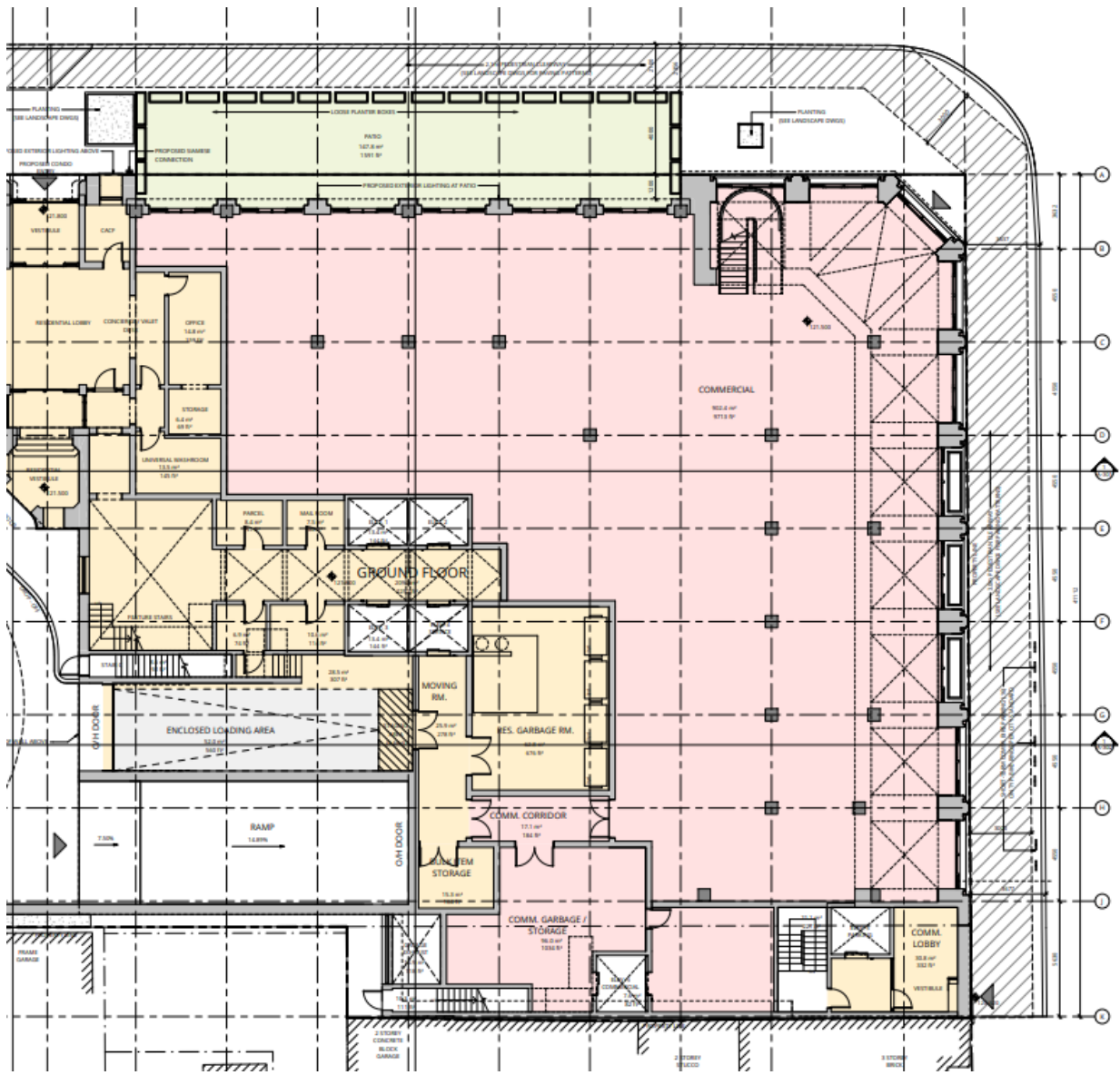


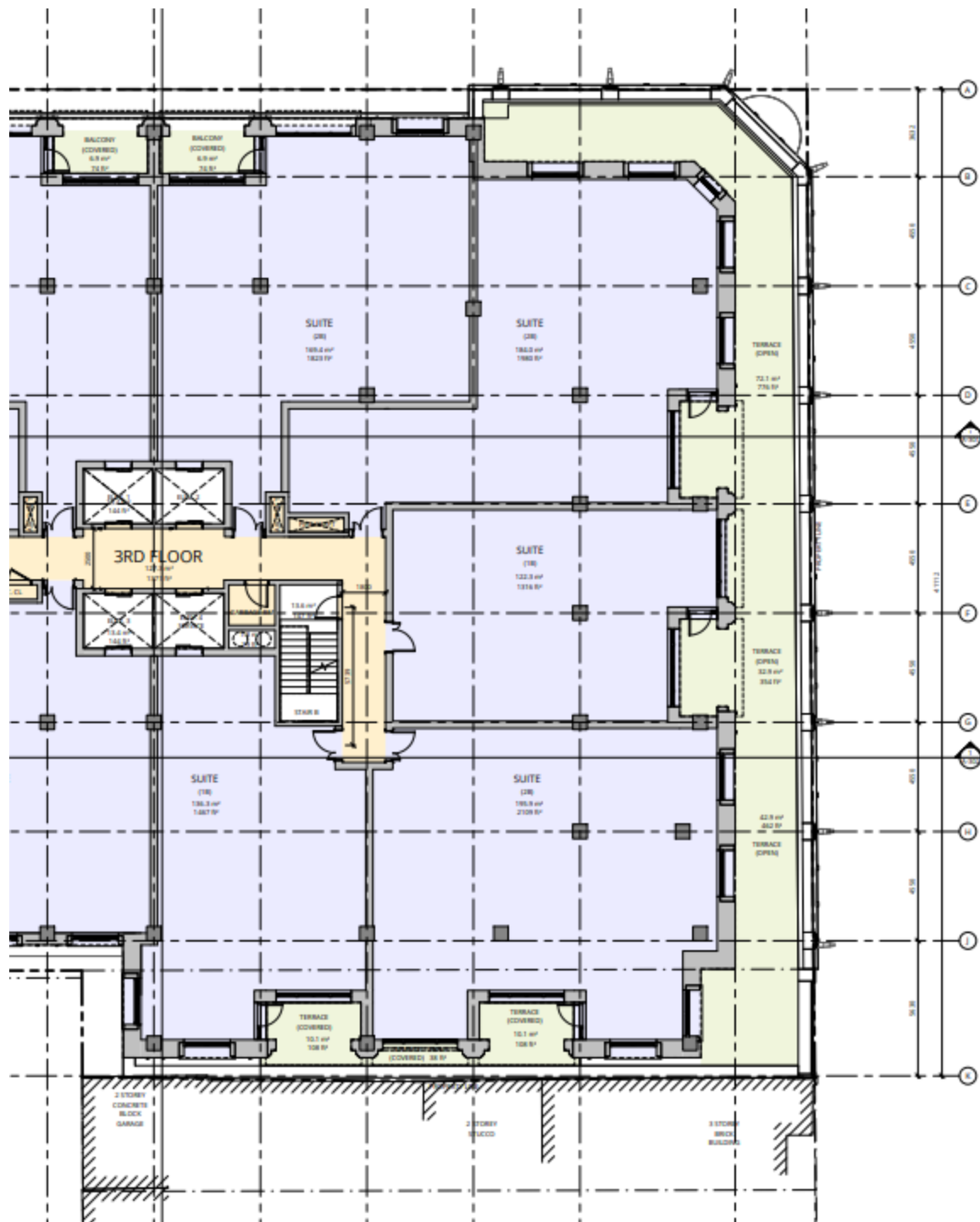
PUBLIC ATTACHMENT 3
SELECTED DRAWINGS AND RENDERS
1134 and 1140 Yonge Street



Site Plan/Ground Floor Plan included for illustration purposes.



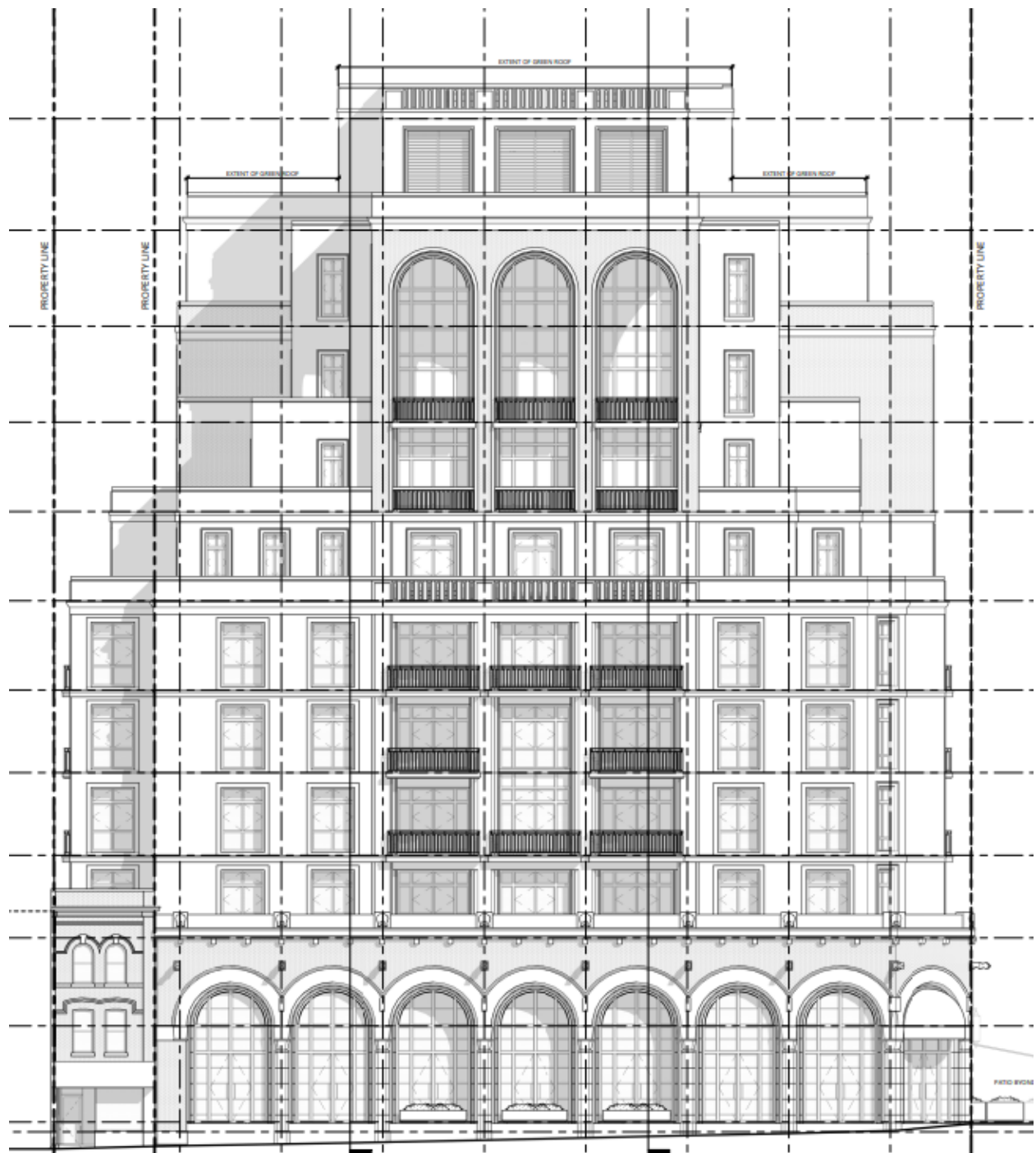
First Floor Plan



Third Floor Plan. Note, the step backs used as terraces above the heritage properties. 3 metre step back above 1140 Yonge Street and 4.2 metre step back above 1134 Yonge Street.



North Façade



East/Yonge Street Façade



North façade rendering



Yonge Street façade rendering



Rendering of the project looking southwest along Yonge Street