

ALL DIMENSIONS ARE GIVEN IN MILLIMETRES UNLESS OTHERWISE INDICATED.

DO NOT SCALE DRAWINGS.

CONTRACTOR SHALL VERIFY AND CHECK ALL DIMENSIONS AND CONDITIONS ON SITE PRIOR TO STARTING ANY OF THE WORK AND REPORT ANY DISCREPANCY TO THE ARCHITECT AND CORRECT THEM BEFORE PROCEEDING. CONSTRUCTION MUST CONFORM TO ALL APPLICABLE CODES AND REQUIREMENTS OF AUTHORITIES HAVING JURISDICTION PERTAINING TO THIS APPLICATION.

THE ARCHITECT BEARS NO RESPONSIBILITY FOR THE INTERPRETATION OF THESE DOCUMENTS BY THE CONTRACTOR. UPON WRITTEN APPLICATION THE ARCHITECT WILL PROVIDE WRITTEN OR GRAPHIC CLARIFICATION AS SUPPLEMENTARY INFORMATION REGARDING THE INTENT OF THE CONTRACT DOCUMENTS.

LOCATIONS OF EXPOSED MECHANICAL OR ELECTRICAL DEVICES, FITTINGS AND FACTORIES ARE INDICATED ON ARCHITECTURAL DRAWINGS WHICH SHALL GOVERN OVER THE MECHANICAL AND ELECTRICAL DRAWINGS. THOSE ITEMS NOT CLEARLY LOCATED TO BE LOCATED AS DIRECTED BY THE ARCHITECT.

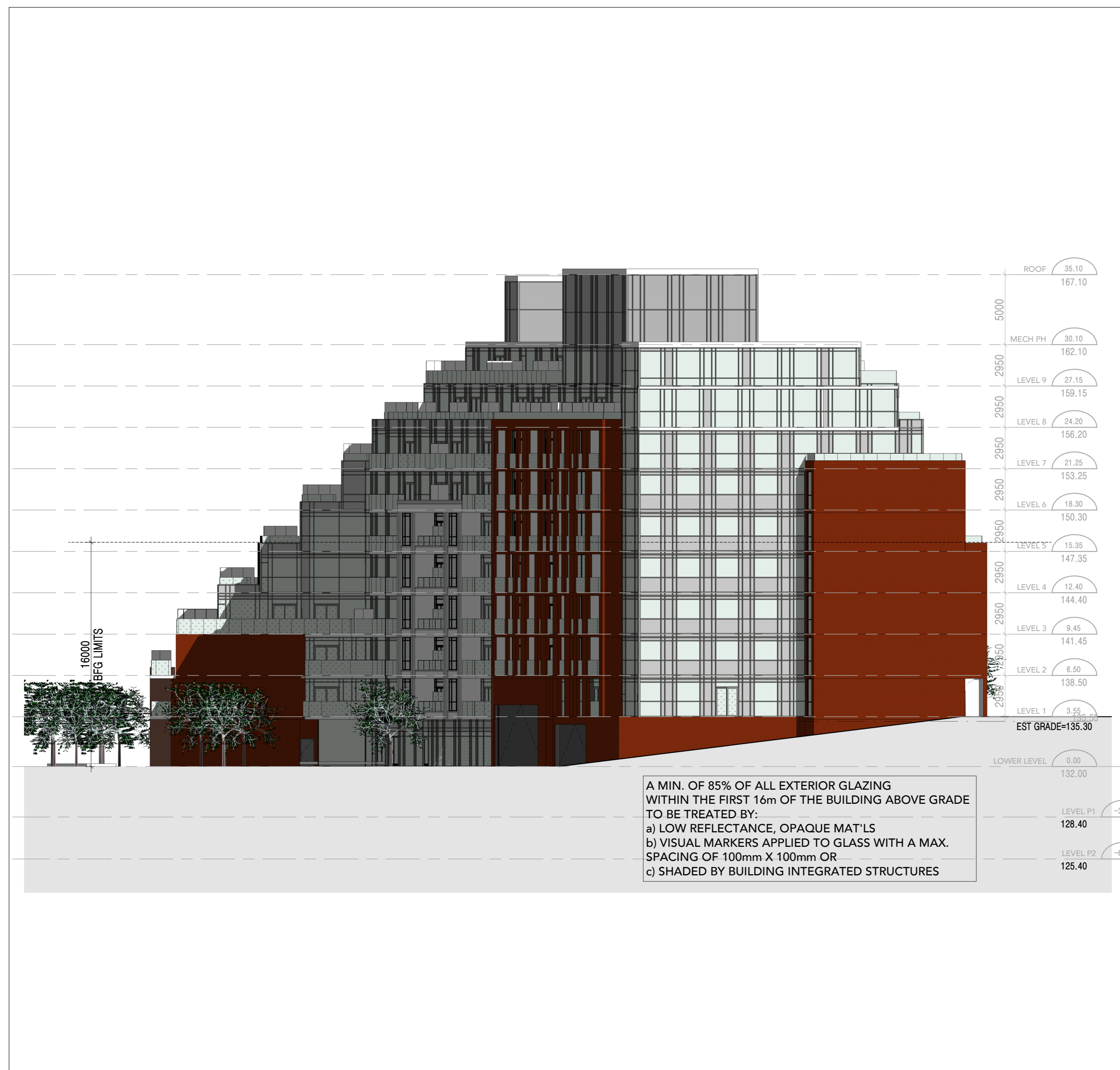
NO INVESTIGATION HAS BEEN UNDERTAKEN OR REPORTED ON THIS OFFICE AS REGARDS TO THE ENVIRONMENTAL CONDITIONS OR POLLUTIONS OF THIS SITE.

COPYRIGHT 2022 KOHN ARCHITECTS INC.

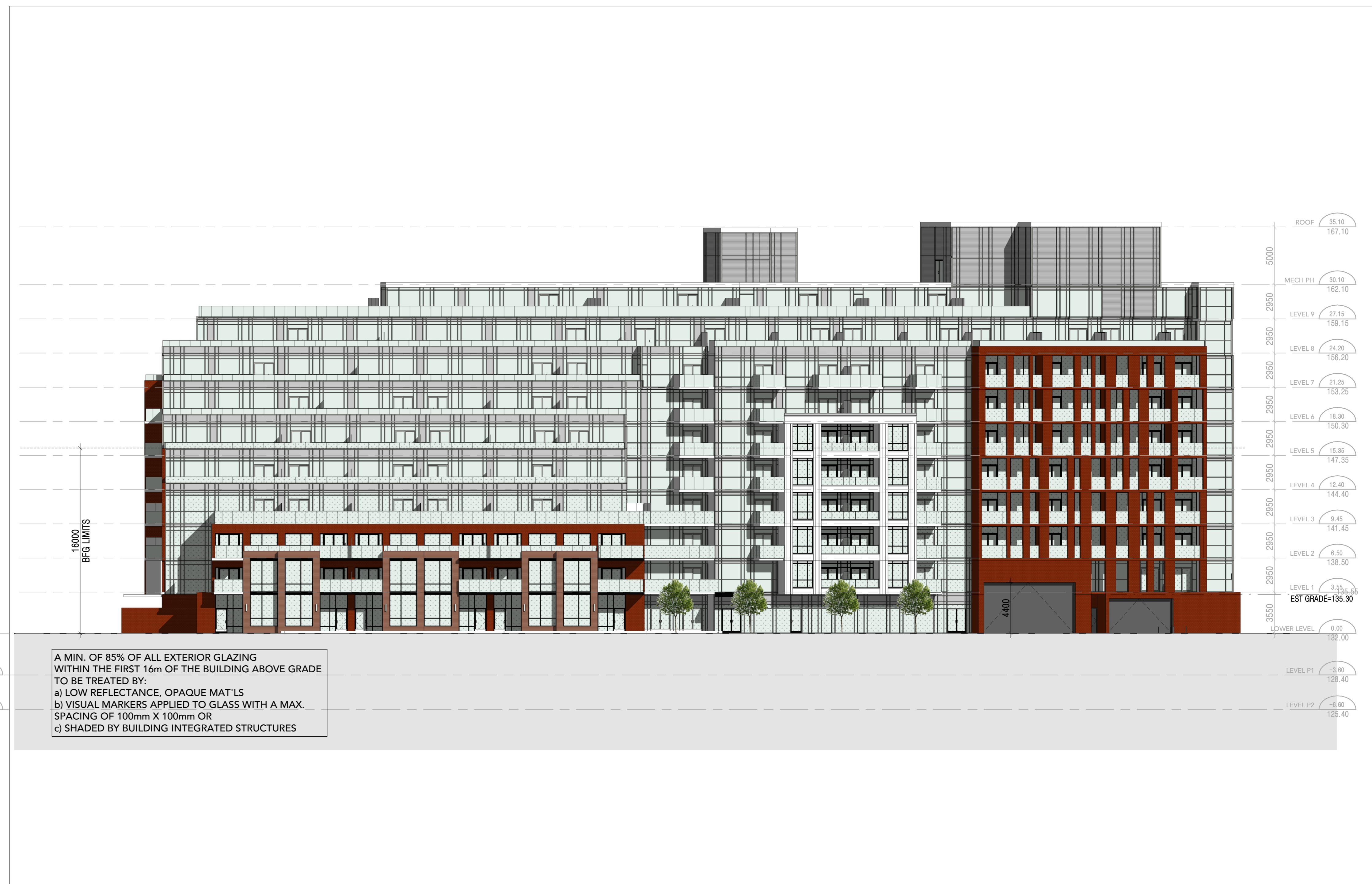
COPYRIGHT OF THIS DRAWING AND THE DESIGN INTENT IS RESERVED BY THE ARCHITECT. THE DRAWING AND ALL ASSOCIATED DOCUMENTS ARE AN INSTRUMENT OF SERVICE BY KOHN ARCHITECTS INC. THE DRAWING AND THE INFORMATION CONTAINED THEREIN MAY NOT BE REPRODUCED IN WHOLE OR IN PART WITHOUT PRIOR WRITTEN PERMISSION OF THE KOHN ARCHITECTS INC.

ALL DRAWINGS ARE THE PROPERTY OF THE ARCHITECT AND MUST BE RETURNED ON REQUEST.

ISSUE DATES AND DISTRIBUTION LOG		
No.	Date	Note
1	21/07/21	ISSUED FOR ZBA SUBMISSION 2
-	16/06/22	WITHOUT PREJUDICE



SOUTHEAST ELEVATION 2
SCALE: 1 : 200 A4 01



SOUTHWEST ELEVATION 1
SCALE: 1 : 200 A4 01



ALTREE

Project: 1615 KINGSTON ROAD

ALTREE
1615 KINGSTON ROAD
SCARBOROUGH ONTARIO

Drawing Title: ELEVATIONS

Project Manager Team: Author
Date Plotted: 2022-06-16 3:04:52 PM
Project No.: 19-140
Scale: 1 : 200
Drawing No.: A4 01

A4 01

ALL DIMENSIONS ARE GIVEN IN MILLIMETRES UNLESS OTHERWISE INDICATED.

DO NOT SCALE DRAWINGS.

CONTRACTOR SHALL VERIFY AND CHECK ALL DIMENSIONS AND CONDITIONS ON SITE PRIOR TO STARTING ANY OF THE WORK AND REPORT ANY DISCREPANCY TO THE ARCHITECT AND CORRECT THEM BEFORE PROCEEDING. CONSTRUCTION MUST CONFORM TO ALL APPLICABLE CODES AND REQUIREMENTS OF AUTHORITIES HAVING JURISDICTION PERTAINING TO THIS APPLICATION.

THE ARCHITECT BEARS NO RESPONSIBILITY FOR THE INTERPRETATION OF THESE DOCUMENTS BY THE CONTRACTOR. UPON WRITTEN APPLICATION THE ARCHITECT WILL PROVIDE WRITTEN OR GRAPHIC CLARIFICATION AS SUPPLEMENTARY INFORMATION REGARDING THE INTENT OF THE CONTRACT DOCUMENTS.

LOCATIONS OF EXPOSED MECHANICAL OR ELECTRICAL DEVICES, FITTINGS AND FACTORIES ARE INDICATED ON ARCHITECTURAL DRAWINGS WHICH SHALL GOVERN OVER THE MECHANICAL AND ELECTRICAL DRAWINGS. THOSE ITEMS NOT CLEARLY LOCATED TO BE LOCATED AS DIRECTED BY THE ARCHITECT.

NO INVESTIGATION HAS BEEN UNDERTAKEN OR REPORTED ON THIS OFFICE AS REGARDS TO THE ENVIRONMENTAL CONDITIONS OR POLLUTIONS OF THIS SITE.

COPYRIGHT 2025 KOHN ARCHITECTS INC.

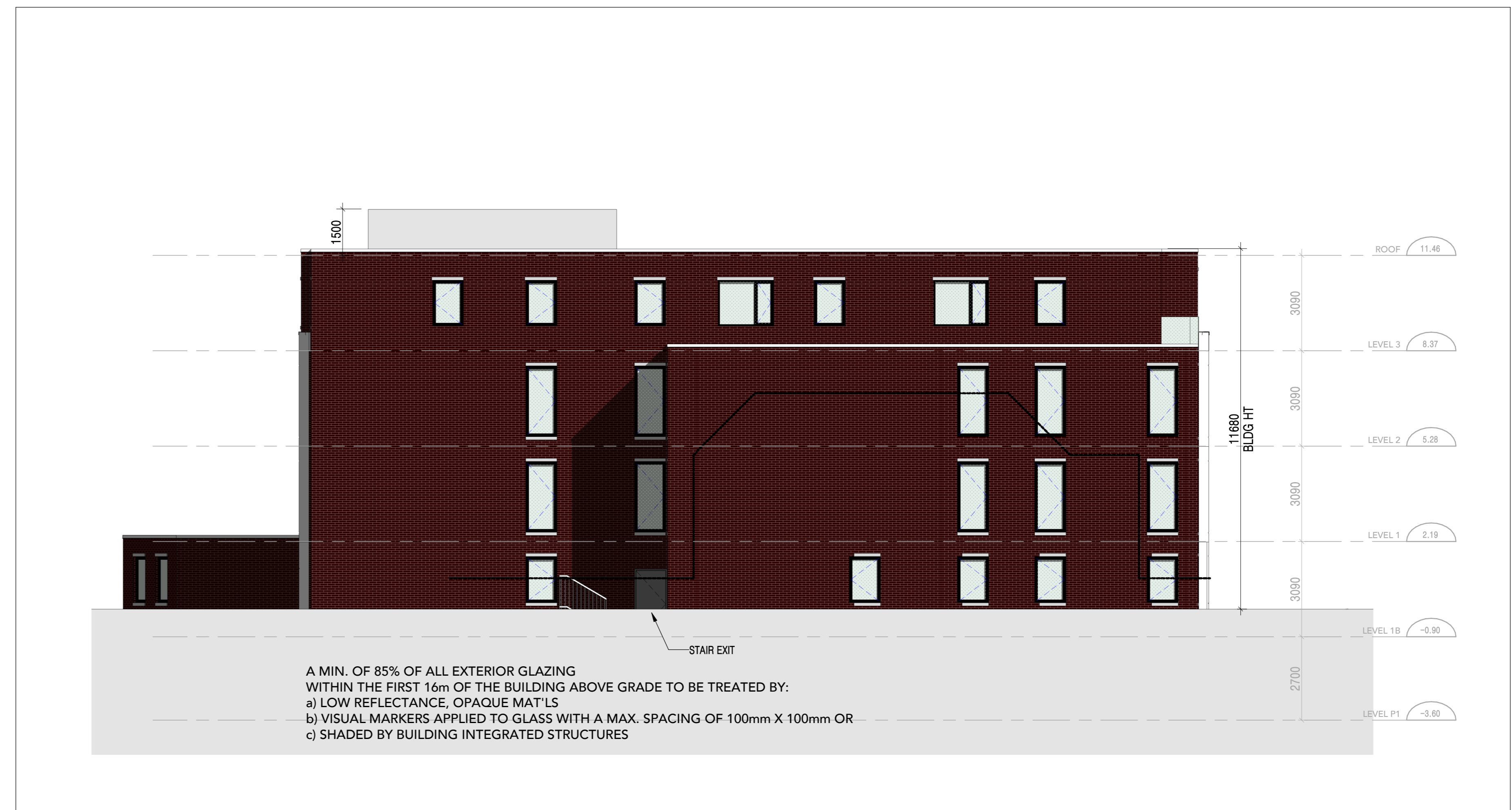
COPYRIGHT OF THIS DRAWING AND THE DESIGN INTENT IS RESERVED BY THE ARCHITECT. THE DRAWINGS AND ALL ASSOCIATED DOCUMENTS ARE AN INSTRUMENT OF SERVICE BY KOHN ARCHITECTS INC. THE DRAWINGS AND THE INFORMATION CONTAINED THEREIN MAY NOT BE REPRODUCED IN WHOLE OR IN PART WITHOUT PRIOR WRITTEN PERMISSION OF THE KOHN ARCHITECTS INC.

ALL DRAWINGS ARE THE PROPERTY OF THE ARCHITECT AND MUST BE RETURNED ON REQUEST.

ISSUE DATES AND DISTRIBUTION LOG		
No.	Date	Note
1	21/07/21	ISSUED FOR ZBA SUBMISSION 2
-	02/06/22	WITHOUT PREJUDICE



EAST ELEVATION - RR 4
SCALE: 1 : 100 A4 10



SOUTH ELEVATION - RR 2
SCALE: 1 : 100 A4 10



WEST ELEVATION - RR 3
SCALE: 1 : 100 A4 10



NORTH ELEVATION - RR 1
SCALE: 1 : 100 A4 10



ALTREE

Project: **1615 KINGSTON ROAD**

ALTREE
1615 KINGSTON ROAD

SCARBOROUGH ONTARIO

Drawing Title:
RR ELEVATIONS

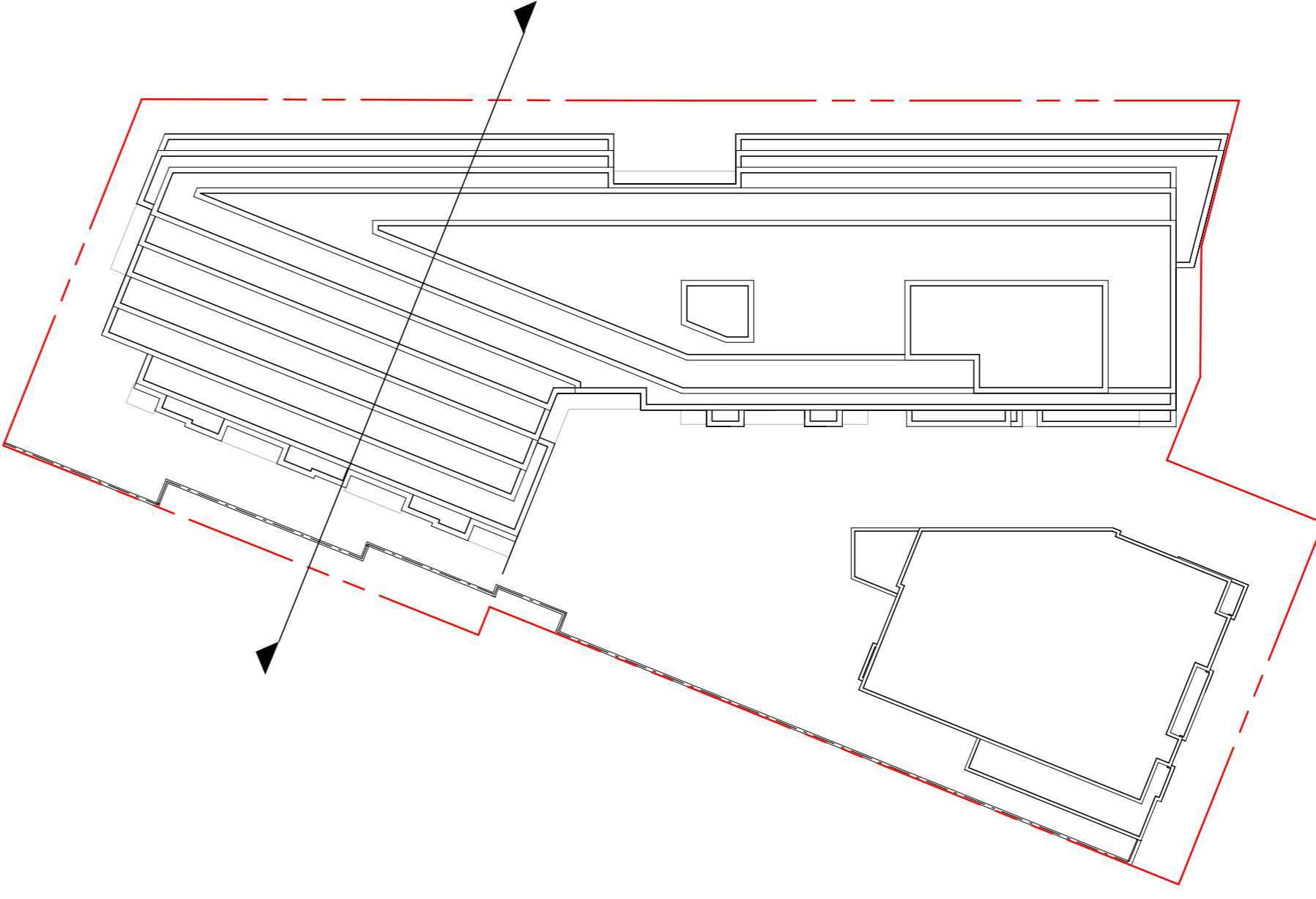
Project Manager Team: Author
Date Plotted: 2022-06-16 3:05:01 PM
Project No: 19-140
Scale: 1 : 100
Drawing No.:

A4 10

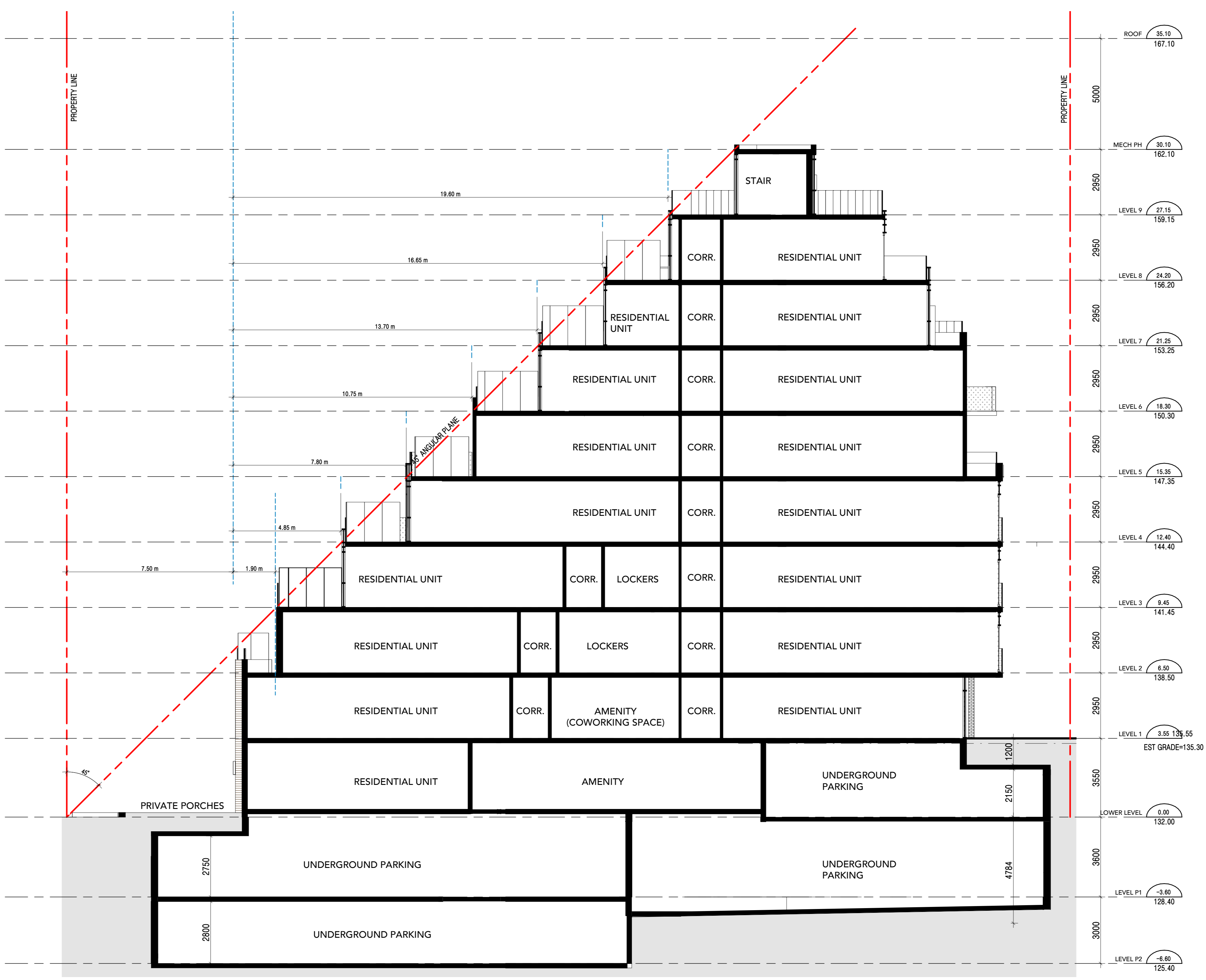
ALL DIMENSIONS ARE GIVEN IN MILLIMETRES UNLESS OTHERWISE INDICATED.
DO NOT SCALE DRAWINGS.
CONTRACTOR SHALL VERIFY AND CHECK ALL DIMENSIONS AND CONDITIONS ON SITE PRIOR TO STARTING ANY OF THE WORK AND REPORT ANY DISCREPANCY TO THE ARCHITECT AND CORRECT THIS BEFORE PROCEEDING. CONSTRUCTION MUST CONFORM TO ALL APPLICABLE CODES AND REQUIREMENTS OF AUTHORITIES HAVING JURISDICTION PERTAINING TO THIS APPLICATION.
THE ARCHITECT BEARS NO RESPONSIBILITY FOR THE INTERPRETATION OF THESE DOCUMENTS BY THE CONTRACTOR. UPON WRITTEN APPLICATION THE ARCHITECT WILL PROVIDE WRITTEN OR GRAPHIC CLARIFICATION AS SUPPLEMENTARY INFORMATION REGARDING THE INTENT OF THE CONTRACT DOCUMENTS.
LOCATIONS OF EXPOSED MECHANICAL OR ELECTRICAL DEVICES, FITTINGS AND FACTORIES ARE INDICATED ON ARCHITECTURAL DRAWINGS WHICH SHALL GOVERN OVER THE MECHANICAL AND ELECTRICAL DRAWINGS. THOSE ITEMS NOT CLEARLY LOCATED TO BE LOCATED AS DIRECTED BY THE ARCHITECT.
NO INVESTIGATION HAS BEEN UNDERTAKEN OR REPORTED ON THIS OFFICE IN REGARD TO THE ENVIRONMENTAL CONDITIONS OR POLLUTIONS OF THIS SITE.
COPYRIGHT 2020 KOHN ARCHITECTS INC.
COPYRIGHT OF THIS DRAWING AND THE DESIGN INTENT IS RESERVED BY THE ARCHITECT. THE DRAWING AND ALL ASSOCIATED DOCUMENTS ARE AN INSTRUMENT OF SERVICE BY KOHN ARCHITECTS INC. THE DRAWING AND THE INFORMATION CONTAINED THEREIN MAY NOT BE REPRODUCED IN WHOLE OR IN PART WITHOUT PRIOR WRITTEN PERMISSION OF THE KOHN ARCHITECTS INC.
ALL DRAWINGS ARE THE PROPERTY OF THE ARCHITECT AND MUST BE RETURNED ON REQUEST.

ISSUE DATES AND DISTRIBUTION LOG

No.	Date	Note
1	21/07/21	ISSUED FOR ZBA SUBMISSION 2
-	16/06/22	WITHOUT PREJUDICE



KEY PLAN 2
SCALE: 1 : 500 A4 23



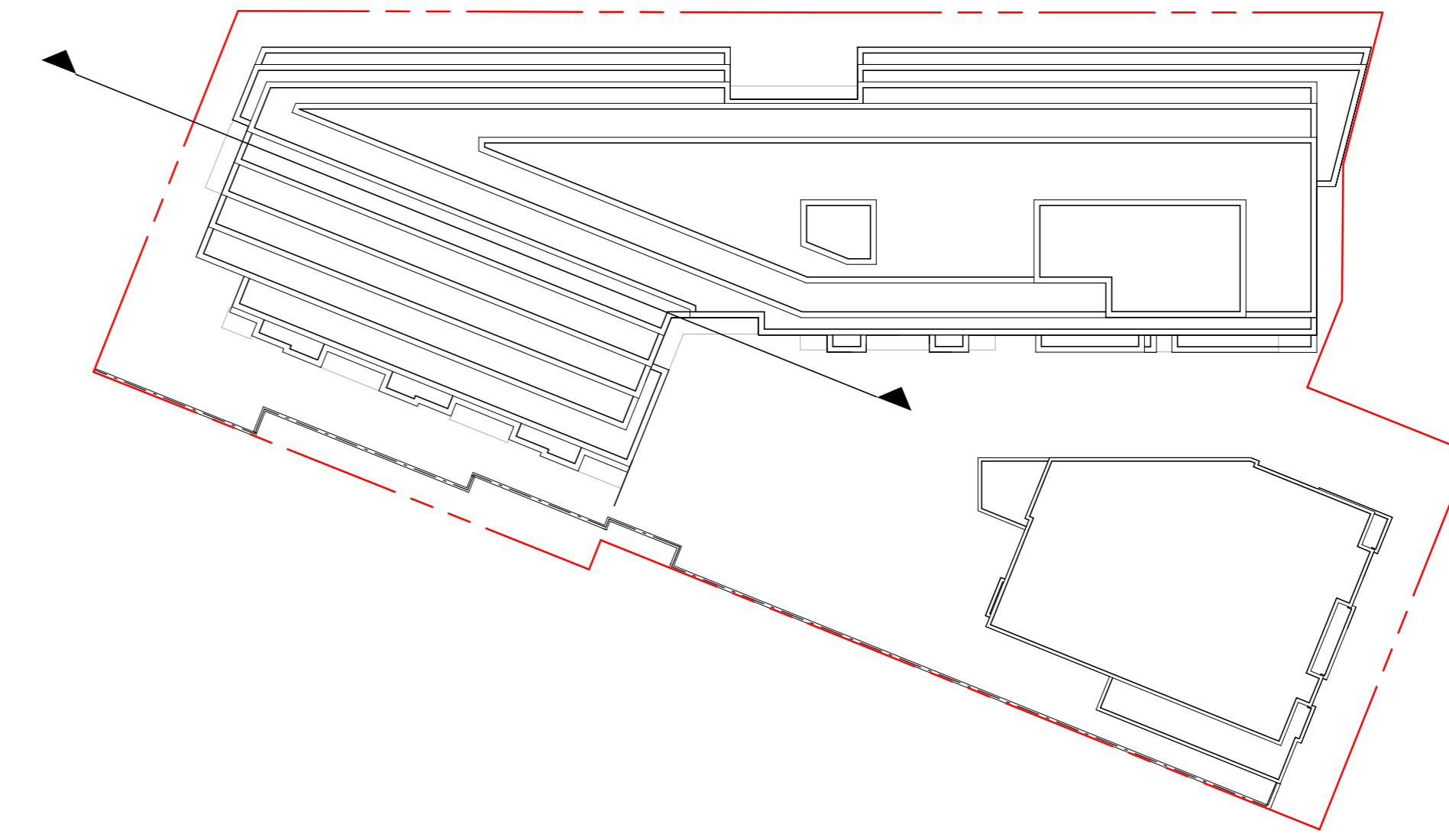
SECTION THROUGH WEST WING 1
SCALE: 1 : 100 A4 23



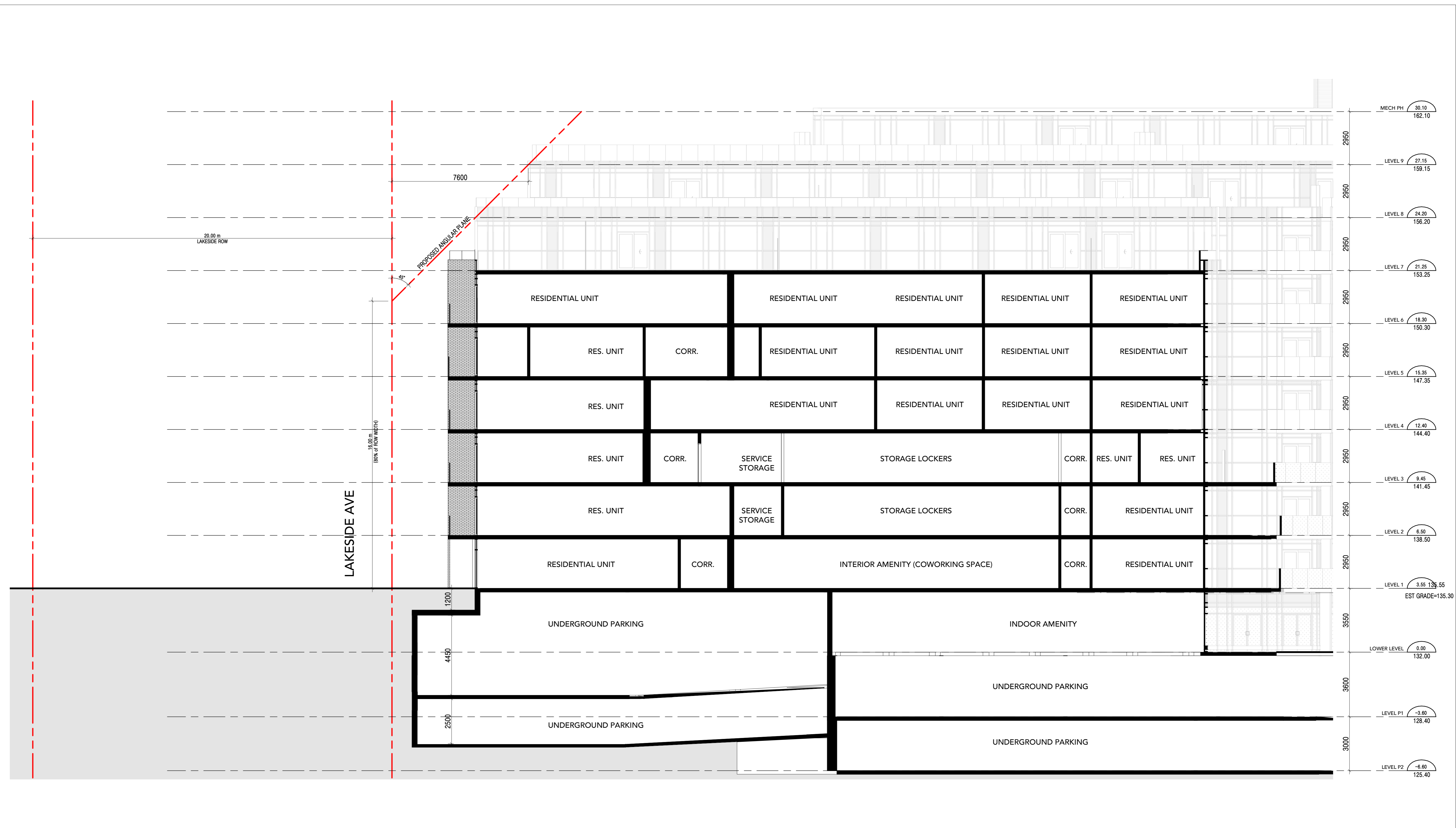
Project: 1615 KINGSTON ROAD
ALTREE
1615 KINGSTON ROAD
SCARBOROUGH ONTARIO
Drawing Title: SECTION THROUGH WEST WING
Project Manager Team: Author
Date Plotted: 2022-06-16 3:05:11 PM
Scale: As indicated
Project No: 19-140

ALL DIMENSIONS ARE GIVEN IN MILLIMETRES UNLESS OTHERWISE INDICATED.
DO NOT SCALE DRAWINGS.
CONTRACTOR SHALL VERIFY AND CHECK ALL DIMENSIONS AND CONDITIONS ON SITE PRIOR TO STARTING ANY OF THE WORK AND REPORT ANY DISCREPANCY TO THE ARCHITECT AND CORRECT THERE BEFORE PROCEEDING. CONSTRUCTION MUST CONFORM TO ALL APPLICABLE CODES AND REQUIREMENTS OF AUTHORITIES HAVING JURISDICTION PERTAINING TO THIS APPLICATION.
THE ARCHITECT BEARS NO RESPONSIBILITY FOR THE INTERPRETATION OF THESE DOCUMENTS BY THE CONTRACTOR. UPON WRITTEN APPLICATION THE ARCHITECT WILL PROVIDE WRITTEN OR GRAPHIC CLARIFICATION AS SUPPLEMENTARY INFORMATION REGARDING THE INTENT OF THE CONTRACT DOCUMENTS.
LOCATIONS OF EXPOSED MECHANICAL OR ELECTRICAL DEVICES, FITTINGS AND FACTORIES ARE INDICATED ON ARCHITECTURAL DRAWINGS WHICH SHALL GOVERN OVER THE MECHANICAL AND ELECTRICAL DRAWINGS. THOSE ITEMS NOT CLEARLY LOCATED TO BE LOCATED AS DIRECTED BY THE ARCHITECT.
NO INVESTIGATION HAS BEEN UNDERTAKEN OR REPORTED ON THIS OFFICE AS REGARDS TO THE ENVIRONMENTAL CONDITIONS OR POLLUTIONS OF THIS SITE.
COPYRIGHT 2025 KOHN ARCHITECTS INC.
COPYRIGHT OF THIS DRAWING AND THE DESIGN INTENT IS RESERVED BY THE ARCHITECT. THE DRAWING AND ALL ASSOCIATED DOCUMENTS ARE AN INSTRUMENT OF SERVICE BY KOHN ARCHITECTS INC. THE DRAWING AND THE INFORMATION CONTAINED THEREIN MAY NOT BE REPRODUCED IN WHOLE OR IN PART WITHOUT PRIOR WRITTEN PERMISSION OF THE KOHN ARCHITECTS INC.
ALL DRAWINGS ARE THE PROPERTY OF THE ARCHITECT AND MUST BE RETURNED ON REQUEST.

ISSUE DATES AND DISTRIBUTION LOG		
No.	Date	Note
1	21/07/21	ISSUED FOR ZBA SUBMISSION 2
-	16/06/22	WITHOUT PREJUDICE



KEY PLAN 2
SCALE: 1 : 500 A4 24



SECTION THROUGH LAKESIDE 1
SCALE: 1 : 100 A4 24



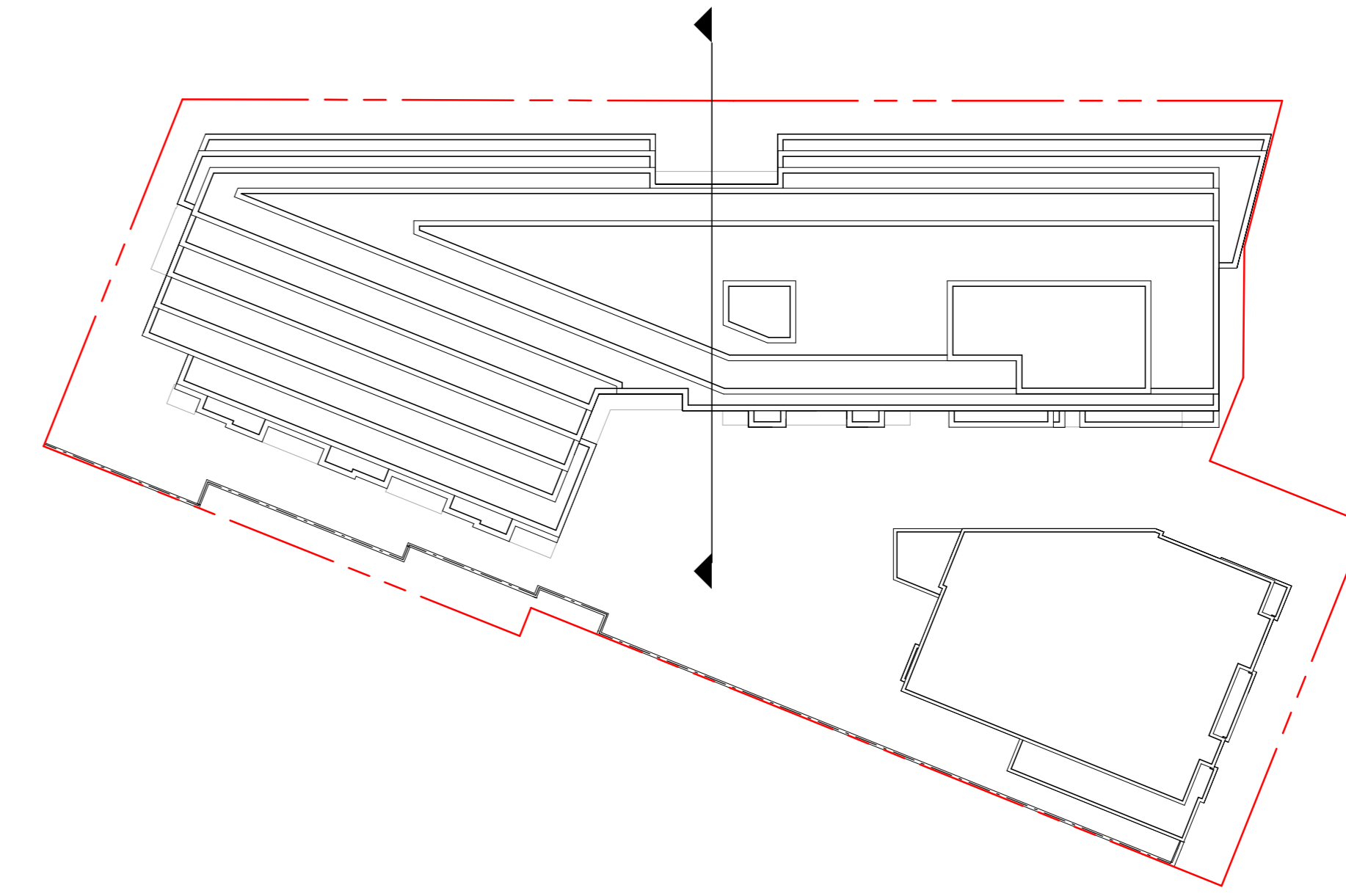
Project:
1615 KINGSTON ROAD
AL TREE
1615 KINGSTON ROAD
SCARBOROUGH ONTARIO
Drawing Title:
SECTION THROUGH LAKESIDE

Project Manager Team: Project No. 19-140
Author: Scale:
Date Plotted: 2022-06-16 3:05:13 PM
As indicated
Drawing No.:

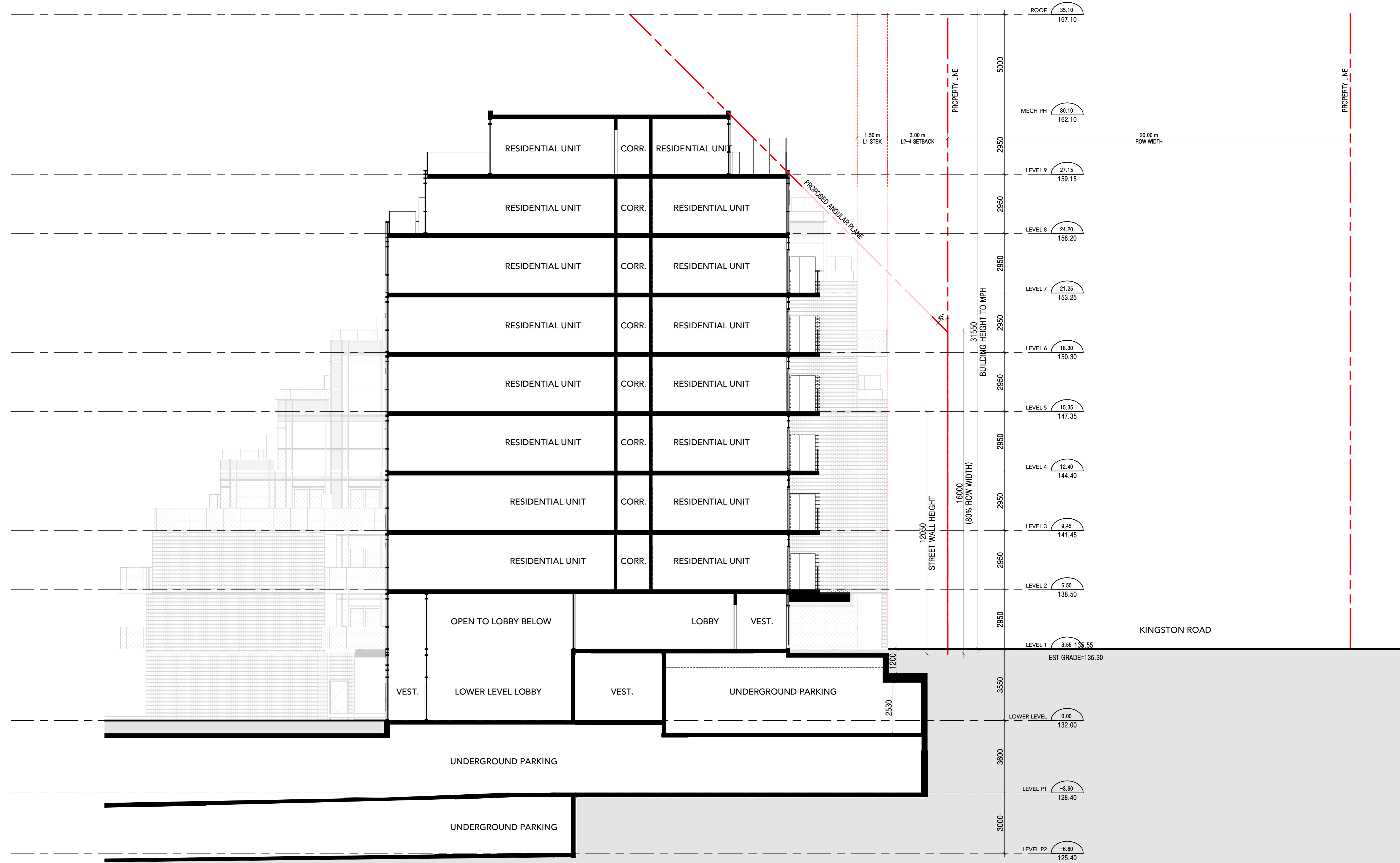
ALL DIMENSIONS ARE GIVEN IN MILLIMETRES UNLESS OTHERWISE INDICATED.
DO NOT SCALE DRAWINGS.
CONTRACTOR SHALL VERIFY AND CHECK ALL DIMENSIONS AND CONDITIONS ON SITE PRIOR TO STARTING ANY OF THE WORK AND REPORT ANY DISCREPANCY TO THE ARCHITECT AND CORRECT THEM BEFORE PROCEEDING. CONSTRUCTION MUST CONFORM TO ALL APPLICABLE CODES AND REQUIREMENTS OF AUTHORITIES HAVING JURISDICTION PERTAINING TO THIS APPLICATION.
THE ARCHITECT BEARS NO RESPONSIBILITY FOR THE INTERPRETATION OF THESE DOCUMENTS BY THE CONTRACTOR. UPON WRITTEN APPLICATION THE ARCHITECT WILL PROVIDE WRITTEN OR GRAPHIC CLARIFICATION AS SUPPLEMENTARY INFORMATION REGARDING THE INTENT OF THE CONTRACT DOCUMENTS.
LOCATIONS OF EXPOSED MECHANICAL OR ELECTRICAL DEVICES, FITTINGS AND FACTORIES ARE INDICATED ON ARCHITECTURAL DRAWINGS WHICH SHALL GOVERN OVER THE MECHANICAL AND ELECTRICAL DRAWINGS. THOSE ITEMS NOT CLEARLY LOCATED TO BE LOCATED AS DIRECTED BY THE ARCHITECT.
NO INVESTIGATION HAS BEEN UNDERTAKEN OR REPORTED ON THIS OFFICE AS REGARDS TO THE ENVIRONMENTAL CONDITIONS OR POLLUTIONS OF THIS SITE.
COPYRIGHT 2025 KOHN ARCHITECTS INC.
COPYRIGHT OF THIS DRAWING AND THE DESIGN INTENT IS RESERVED BY THE ARCHITECT. THE DRAWINGS AND ALL ASSOCIATED DOCUMENTS ARE AN INSTRUMENT OF SERVICE BY KOHN ARCHITECTS INC. THE DRAWINGS AND THE INFORMATION CONTAINED THEREIN MAY NOT BE REPRODUCED IN WHOLE OR IN PART WITHOUT PRIOR WRITTEN PERMISSION OF THE KOHN ARCHITECTS INC.
ALL DRAWINGS ARE THE PROPERTY OF THE ARCHITECT AND MUST BE RETURNED ON REQUEST.

ISSUE DATES AND DISTRIBUTION LOG

No.	Date	Note
1	21/07/21	ISSUED FOR ZBA SUBMISSION 2
-	16/06/22	WITHOUT PREJUDICE



KEY PLAN 2
SCALE: 1 : 500 A4 25



SECTION THROUGH KINGSTON ROAD 1
SCALE: 1 : 100 A4 25



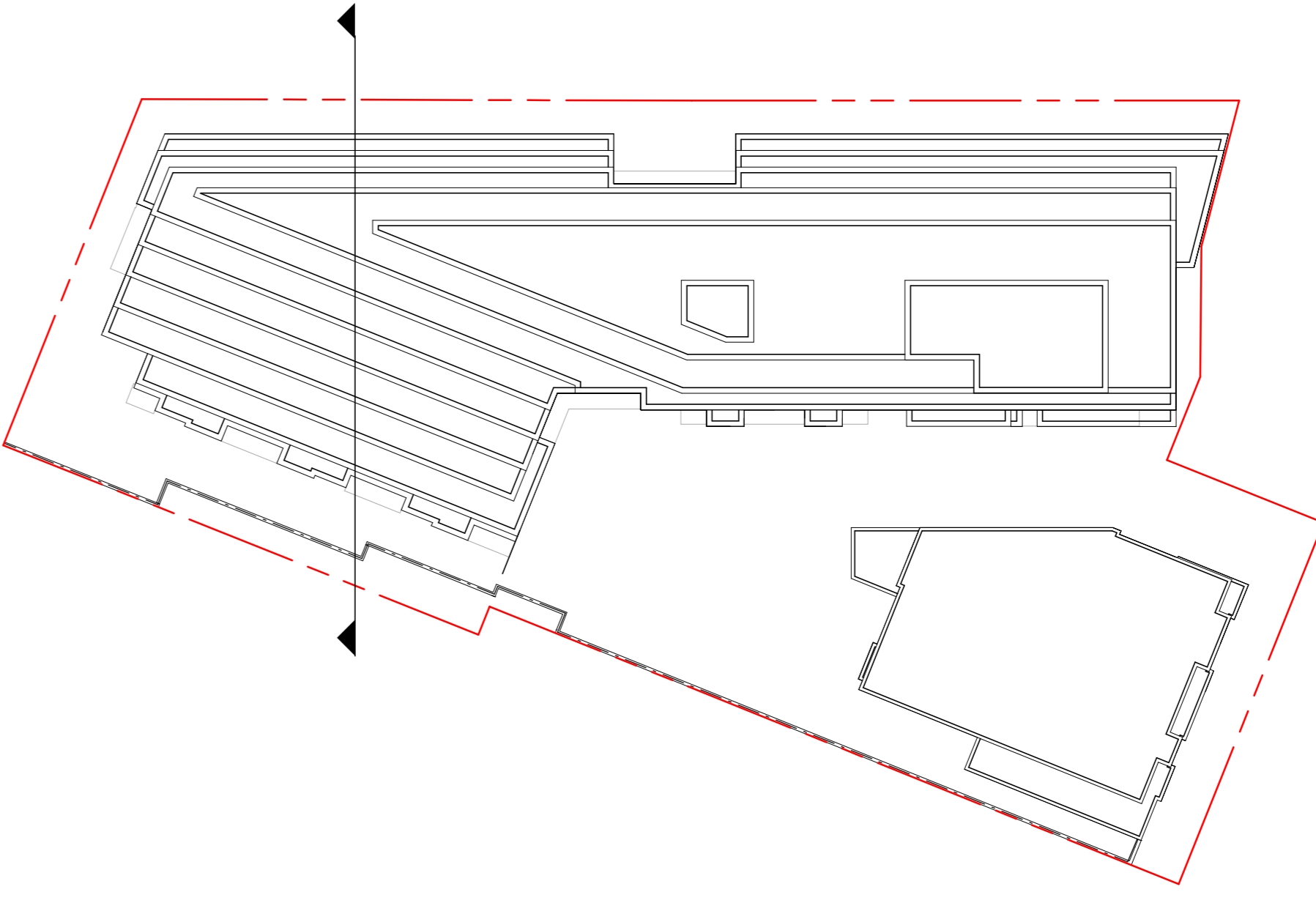
Project: 1615 KINGSTON ROAD
AL TREE
1615 KINGSTON ROAD
SCARBOROUGH ONTARIO
Drawing Title: SECTION THROUGH KINGSTON 2
Project Manager Team: Author
Date Plotted: 2022-06-16 3:05:16 PM
Scale: As indicated
Drawing No.: 19-140

A4 25

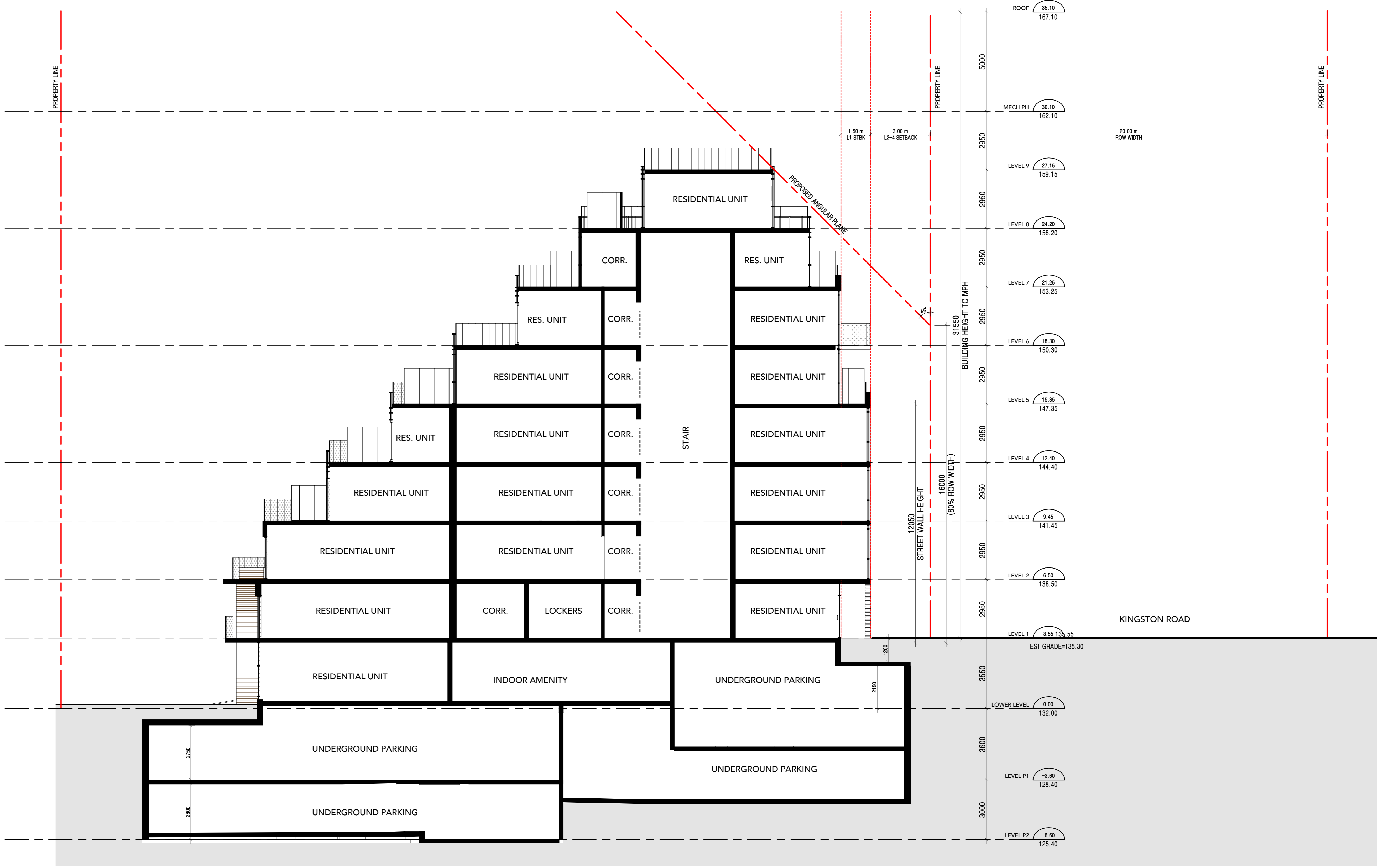
ALL DIMENSIONS ARE GIVEN IN MILLIMETRES UNLESS OTHERWISE INDICATED.
DO NOT SCALE DRAWINGS.
CONTRACTOR SHALL VERIFY AND CHECK ALL DIMENSIONS AND CONDITIONS ON SITE PRIOR TO STARTING ANY OF THE WORK AND REPORT ANY DISCREPANCY TO THE ARCHITECT AND CORRECT THEM BEFORE PROCEEDING. CONSTRUCTION MUST CONFORM TO ALL APPLICABLE CODES AND REQUIREMENTS OF AUTHORITIES HAVING JURISDICTION PERTAINING TO THIS APPLICATION.
THE ARCHITECT BEARS NO RESPONSIBILITY FOR THE INTERPRETATION OF THESE DOCUMENTS BY THE CONTRACTOR. UPON WRITTEN APPLICATION THE ARCHITECT WILL PROVIDE WRITTEN OR GRAPHIC CLARIFICATION AS SUPPLEMENTARY INFORMATION REGARDING THE INTENT OF THE CONTRACT DOCUMENTS.
LOCATIONS OF EXPOSED MECHANICAL OR ELECTRICAL DEVICES, FITTINGS AND FACTORIES ARE INDICATED ON ARCHITECTURAL DRAWINGS WHICH SHALL GOVERN OVER THE MECHANICAL AND ELECTRICAL DRAWINGS. THOSE ITEMS NOT CLEARLY LOCATED TO BE LOCATED AS DIRECTED BY THE ARCHITECT.
NO INVESTIGATION HAS BEEN UNDERTAKEN OR REPORTED ON THIS OFFICE AS REGARDS TO THE ENVIRONMENTAL CONDITIONS OR POLLUTIONS OF THIS SITE.
COPYRIGHT 2025 KOHN ARCHITECTS INC.
COPYRIGHT OF THIS DRAWING AND THE DESIGN INTENT IS RESERVED BY THE ARCHITECT. THE DRAWING AND ALL ASSOCIATED DOCUMENTS ARE AN INSTRUMENT OF SERVICE BY KOHN ARCHITECTS INC. THE DRAWING AND THE INFORMATION CONTAINED THEREIN MAY NOT BE REPRODUCED IN WHOLE OR IN PART WITHOUT PRIOR WRITTEN PERMISSION OF THE KOHN ARCHITECTS INC.
ALL DRAWINGS ARE THE PROPERTY OF THE ARCHITECT AND MUST BE RETURNED ON REQUEST.

ISSUE DATES AND DISTRIBUTION LOG

No.	Date	Note
1	16/06/22	WITHOUT PREJUDICE



KEY PLAN 2
SCALE: 1 : 500 A4 26



SECTION THROUGH KINGSTON 3 1
SCALE: 1 : 100 A4 26



1615 KINGSTON ROAD
AL TREE
1615 KINGSTON ROAD
SCARBOROUGH ONTARIO
Drawing Title:
SECTION THROUGH KINGSTON 3

Project Manager Team: Author
Date Plotted: 2022-06-16 3:05:17 PM
Project No.: 19-140
Scale: As indicated
Drawing No.:

