

## **Parking Amendments - Kinsdale Boulevard**

**Date:** March 30, 2022  
**To:** Etobicoke York Community Council  
**From:** Director, Traffic Management, Transportation Services  
**Wards:** Ward 3 - Etobicoke Lakeshore

### **SUMMARY**

---

This staff report is about a matter that Community Council has delegated authority from City Council to make a final decision.

Transportation Services is recommending that a portion of the existing parking prohibition on the south side of Kinsdale Boulevard be replaced with a maximum 10 minutes parking regulation. The proposed amendment will provide short-term parking to facilitate pick-up and drop-off of school children at Etienne Brule Junior Public School and Humber Bay Child Care Centre.

During the course of the investigation it was noted that there is a discrepancy between the existing parking regulations and the posted signs on Kinsdale Boulevard between Cloverhill Road and Newholm Road. Recommendations 1, 3 and 4 will correct this inconsistency.

### **RECOMMENDATIONS**

---

The Director, Traffic Management, Transportation Services recommends that:

1. Etobicoke York Community Council prohibit parking at all times, on the south side of Kinsdale Boulevard, between Cloverhill Road and a point 25 metres east of Cloverhill Road.
2. Etobicoke York Community Council authorize parking for a maximum period of 10 minutes from 8:00 a.m. to 5:00 p.m., Monday to Friday, on the south side of Kinsdale Boulevard, between a point 25 metres east of Cloverhill Road and a point 60 metres further east.
3. Etobicoke York Community Council prohibit parking from 5:00 p.m. to 8:00 a.m., Monday to Friday, and at all times, Saturday and Sunday, on the south side of Kinsdale Boulevard, between a point 25 metres east of Cloverhill Road and a point 60 metres further east.

4. Etobicoke York Community Council prohibit parking at all times on the south side of Kinsdale Boulevard, between a point 85 metres east of Cloverhill Road and Newholm Road.

## **FINANCIAL IMPACT**

---

The signage costs associated with the proposed amendments are approximately \$1000.00. Funding is available within the Transportation Services 2022 Operating Budget.

## **DECISION HISTORY**

---

This report addresses a new initiative.

## **COMMENTS**

---

The principal of Etienne Brule Junior Public School and Humber Bay Child Care Centre has requested a maximum 10 minute student pick-up and drop-off area on the south side of Kinsdale Boulevard, between a point 25 metres east of Cloverhill Road and a point 60 metres further east. This will allow short duration parking for the parents/caregivers.

### **Existing Conditions**

Kinsdale Boulevard is characterized by the following conditions:

- It is a two-lane, east-west local roadway
- It operates two-way traffic on a pavement width of approximately 8.0 metres
- The daily two-way traffic volume is approximately 800 vehicles
- The speed limit is 40 km/h
- Heavy trucks are prohibited at all times
- There is no TTC service provided
- There are sidewalks located on both sides of the street.

The parking regulations on Kinsdale Boulevard, within the subject section are as follows:

#### **North side**

- Permit parking from 12:01 a.m. to 6:00 a.m., daily
- The unsigned statutory three-hour maximum parking limit is in effect from 6:00 am to midnight.

#### • **South side**

- No parking anytime

## **Proposed Changes**

The proposed regulations will legalize the parking regulation signs that are currently posted between Cloverhill Road and Newholm Road and provide short-term parking to facilitate pick-up and drop-off of school children at Etienne Brule Junior Public School and Humber Bay Child Care Centre.

A map of the area and proposed parking amendments is included in Attachment 1.

The Ward Councillor has been advised of the recommendations of this staff report.

## **CONTACT**

---

Shawn Dillon, Manager Traffic Operations (Area 2), Transportation Services  
416-394-8409, [Shawn.Dillon@toronto.ca](mailto:Shawn.Dillon@toronto.ca)

## **SIGNATURE**

---

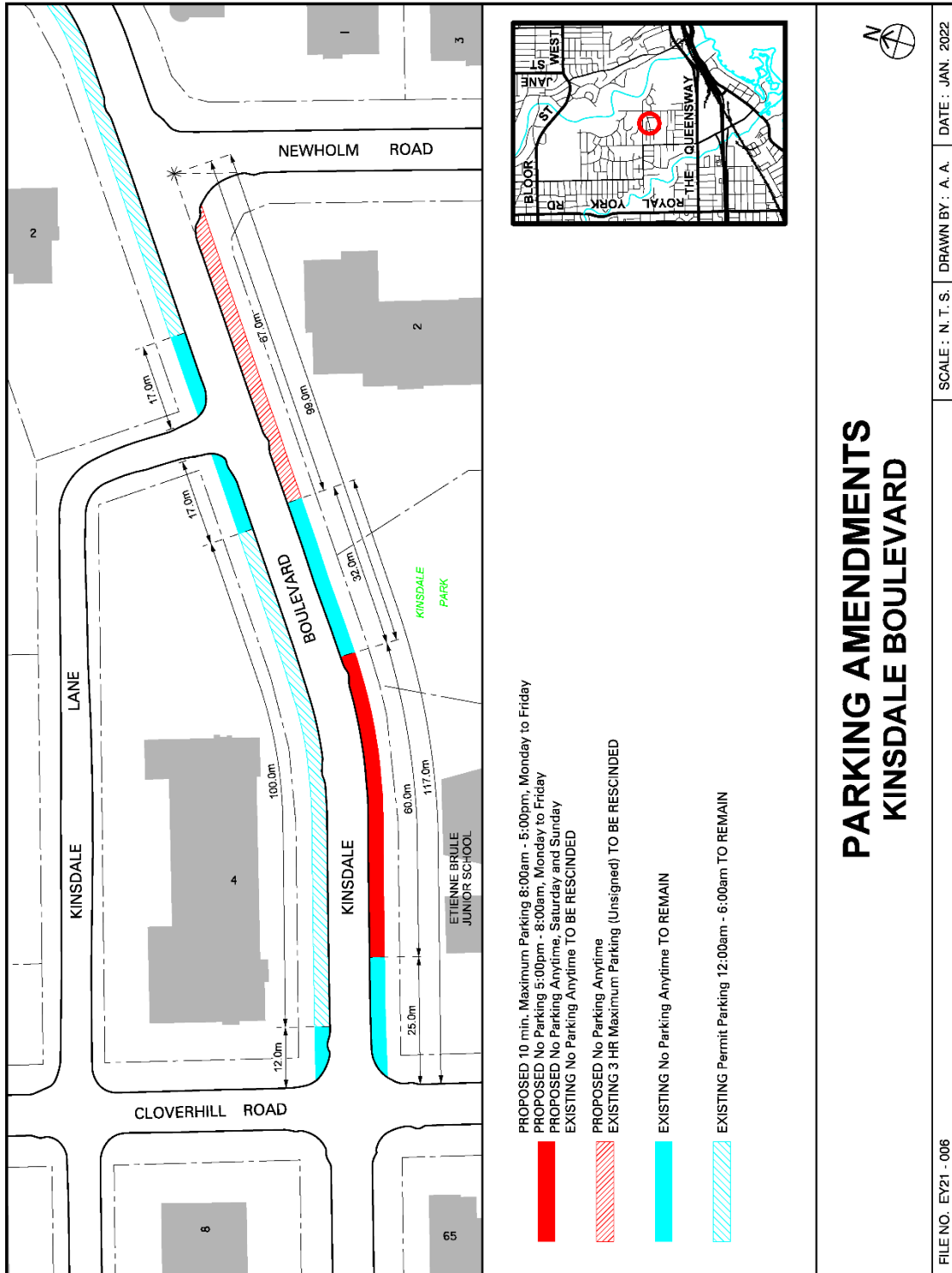
Roger Browne, M.A.Sc., P. Eng.  
Director, Traffic Management, Transportation Services

## **ATTACHMENTS**

---

Attachment 1: Map - Kinsdale Boulevard

Attachment 1: Map - Kinsdale Boulevard



**PARKING AMENDMENTS  
KINSDALE BOULEVARD**