

Submitted by: Stephen Moranis on behalf of Ontario Tennis Association, June 27, 2022

Allen District OTA Training Centre

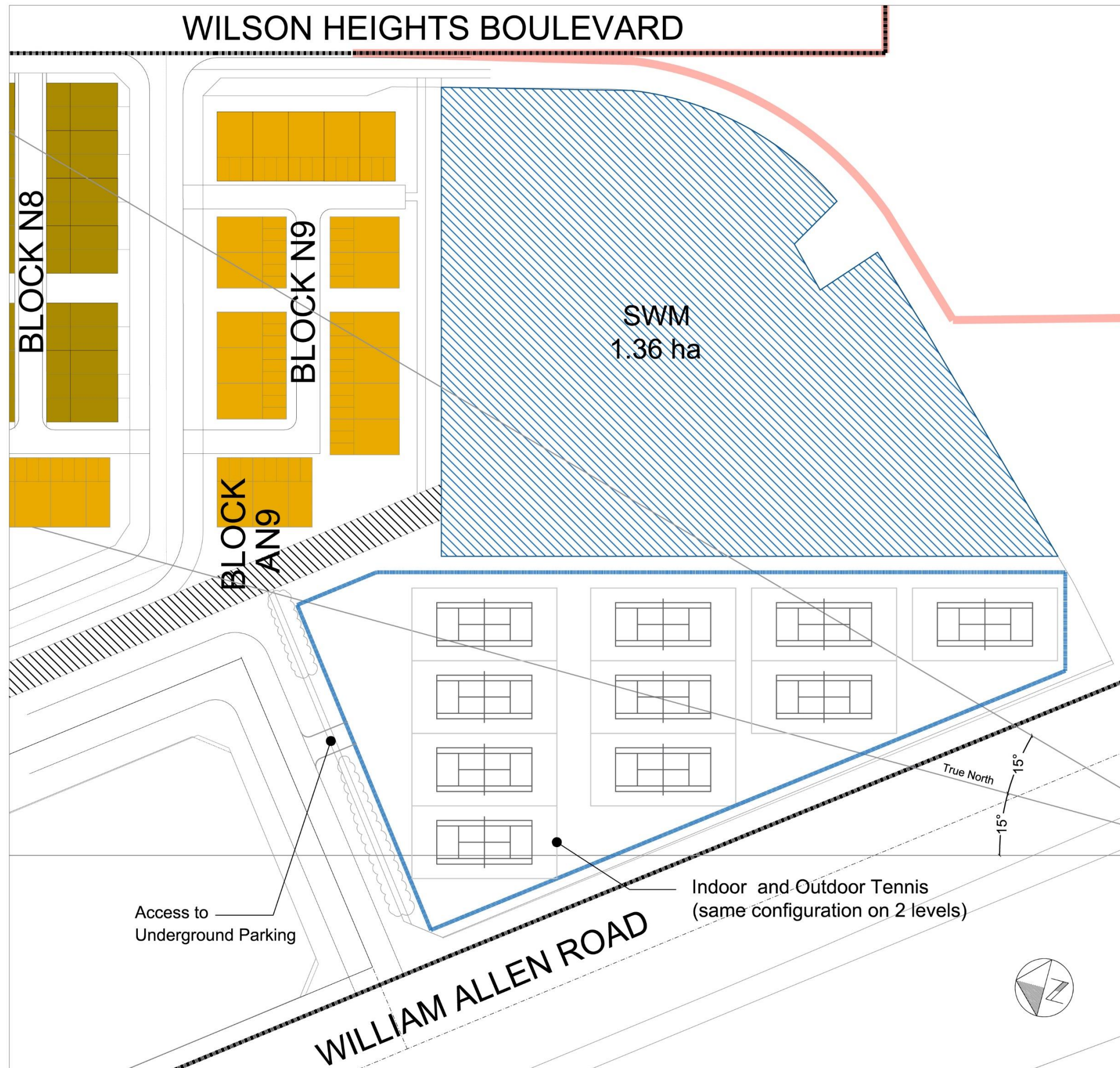
**diamond
schmitt**

Diamond Schmitt Architects

Jan 10, 2020

PROPOSED 3-DIMENSIONAL MODEL 6.4





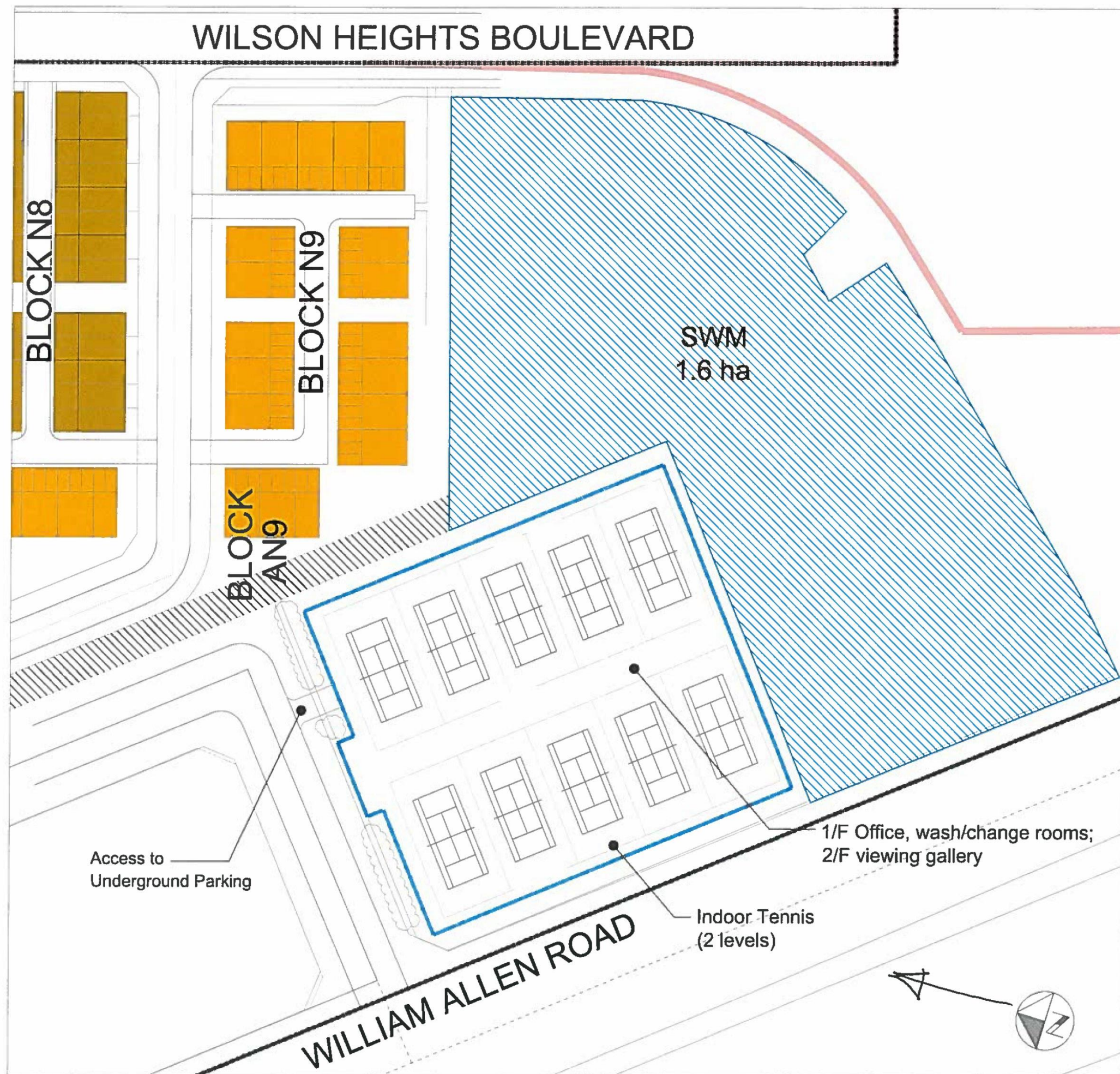
OTA Concept 1:

10 indoor / 10 outdoor courts
(2 levels including rooftop)
(1.3 ha.)

Allen East District Neighbourhood

OTA complex with underground parking
Townhouse Units (Blks N9 + AN9) = 56

Prepared by: The Planning Partnership
Revised: July 10, 2019
Scale 1: 1000 (11"x17")



OTA Concept 2:

20 indoor courts (2 levels)
(1.0 ha.)

Allen East District Neighbourhood

OTA complex with underground parking
Townhouse Units (Blks N9 + AN9) = 56

Prepared by: The Planning Partnership
Revised: June 20, 2019
Scale 1: 1000 (11"x17")



CLANTON PARK

SWM
117728 ft²
[10937.31 m²]

Bike Path

Change Change

Lobby

Pro Shop

2500

5000

1000

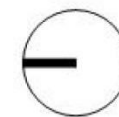
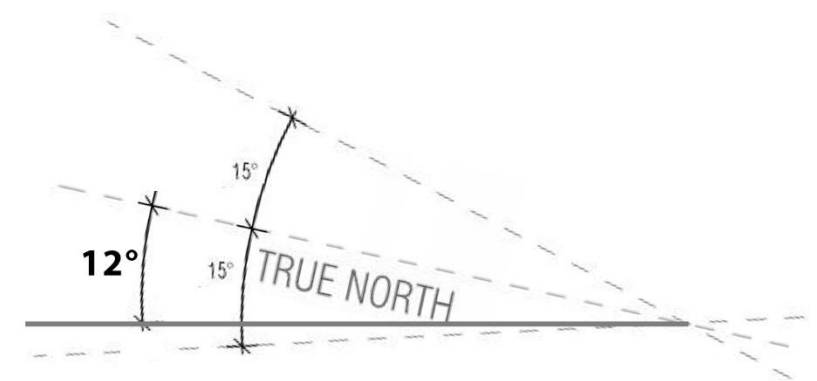
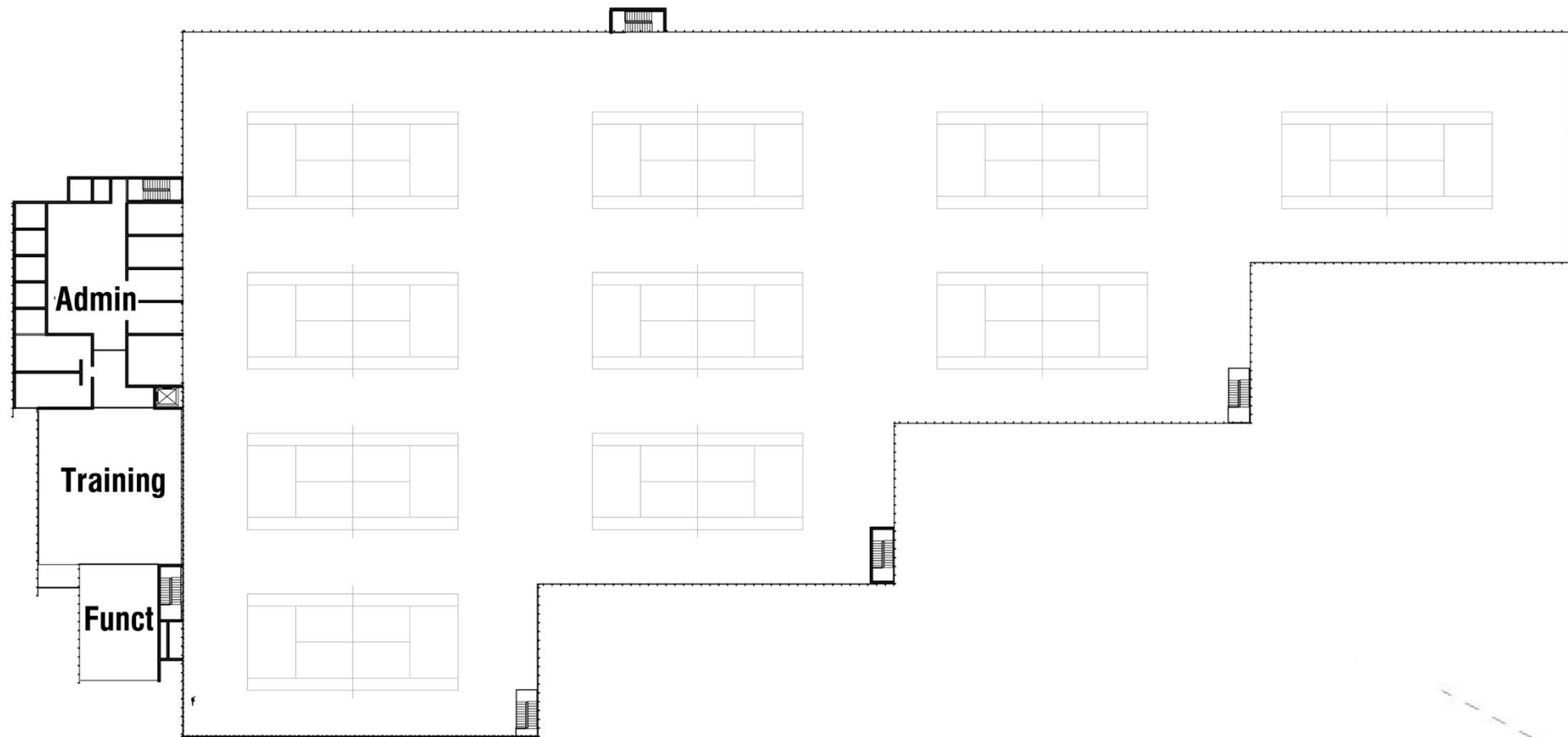
12°

15°

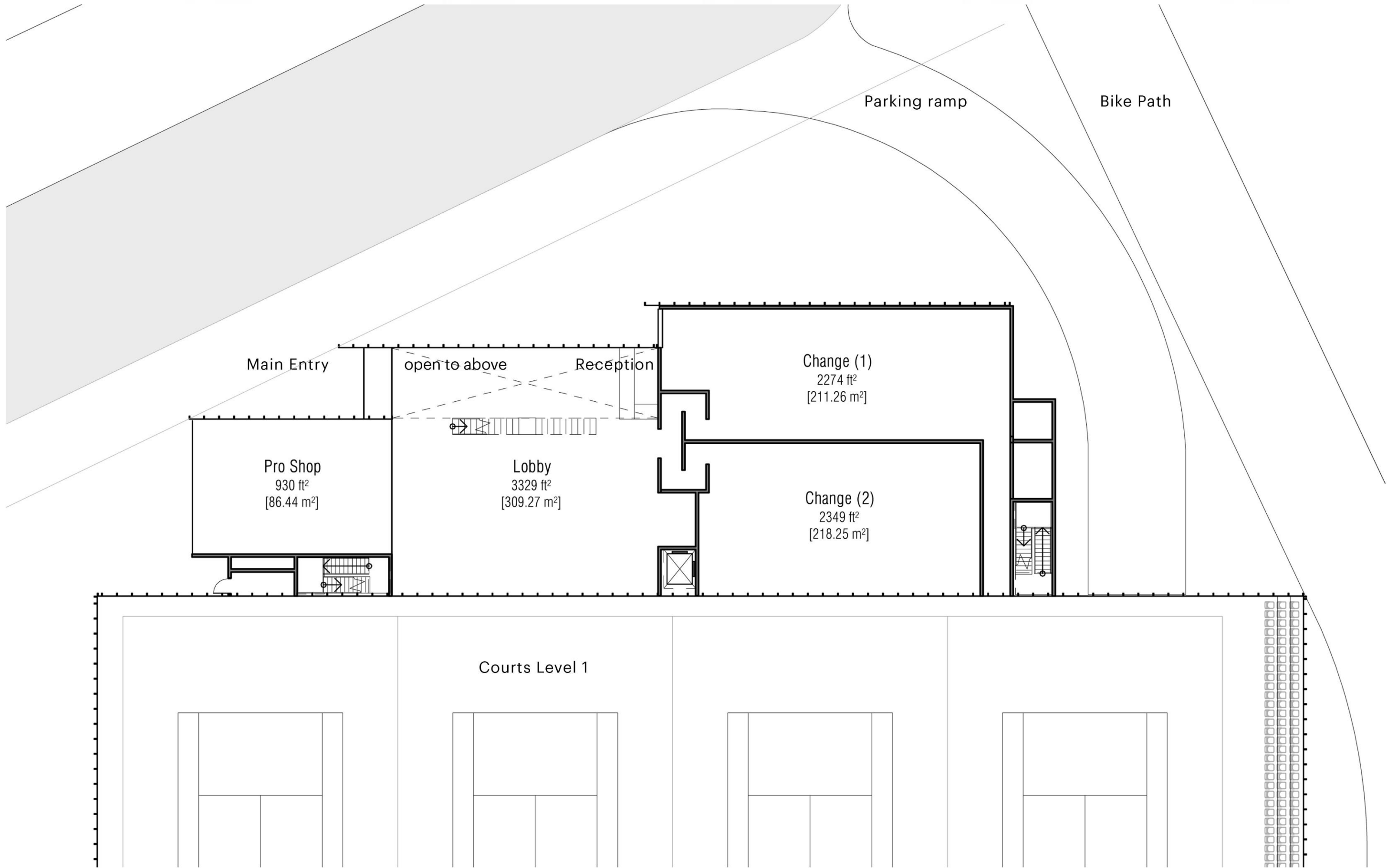
TRUE NORTH

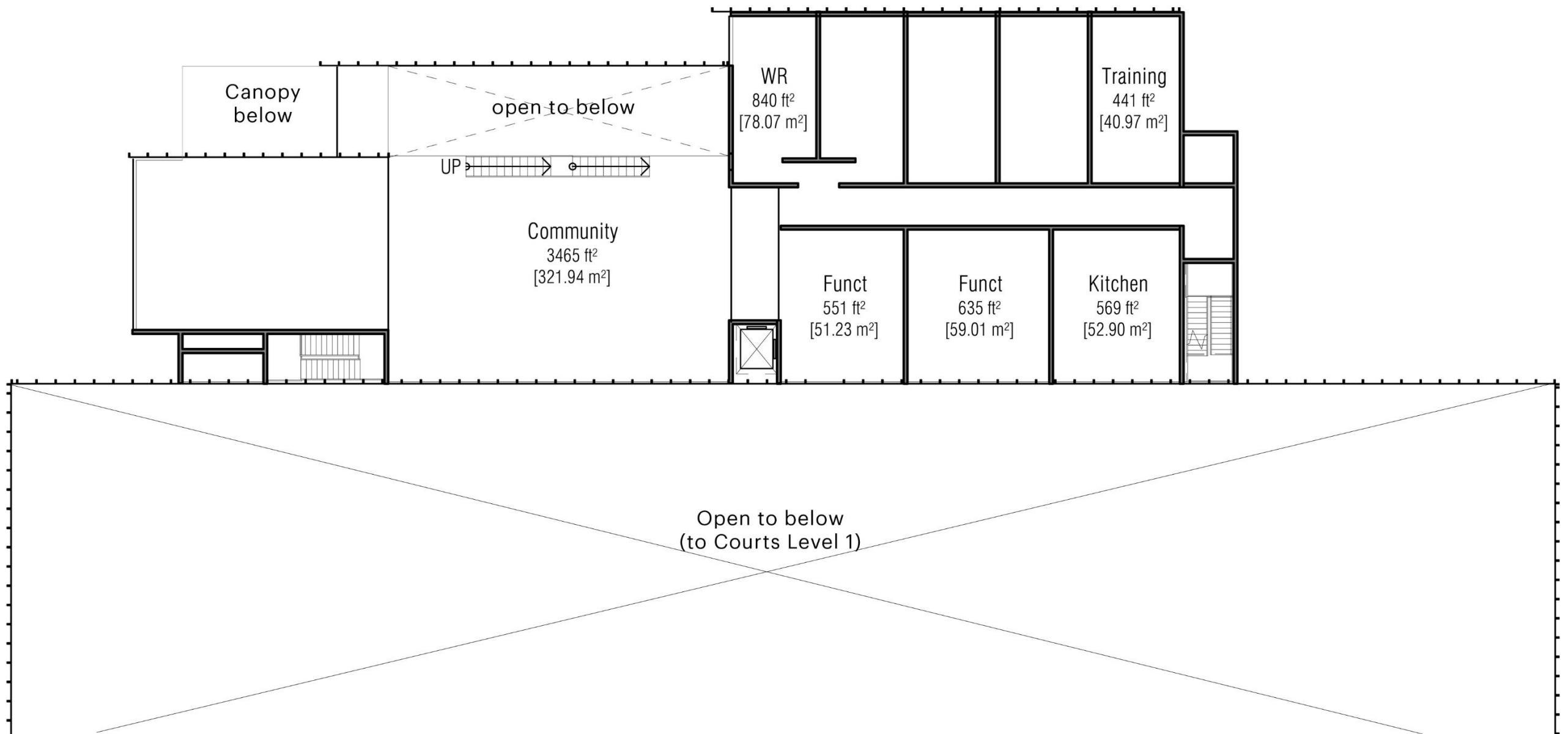


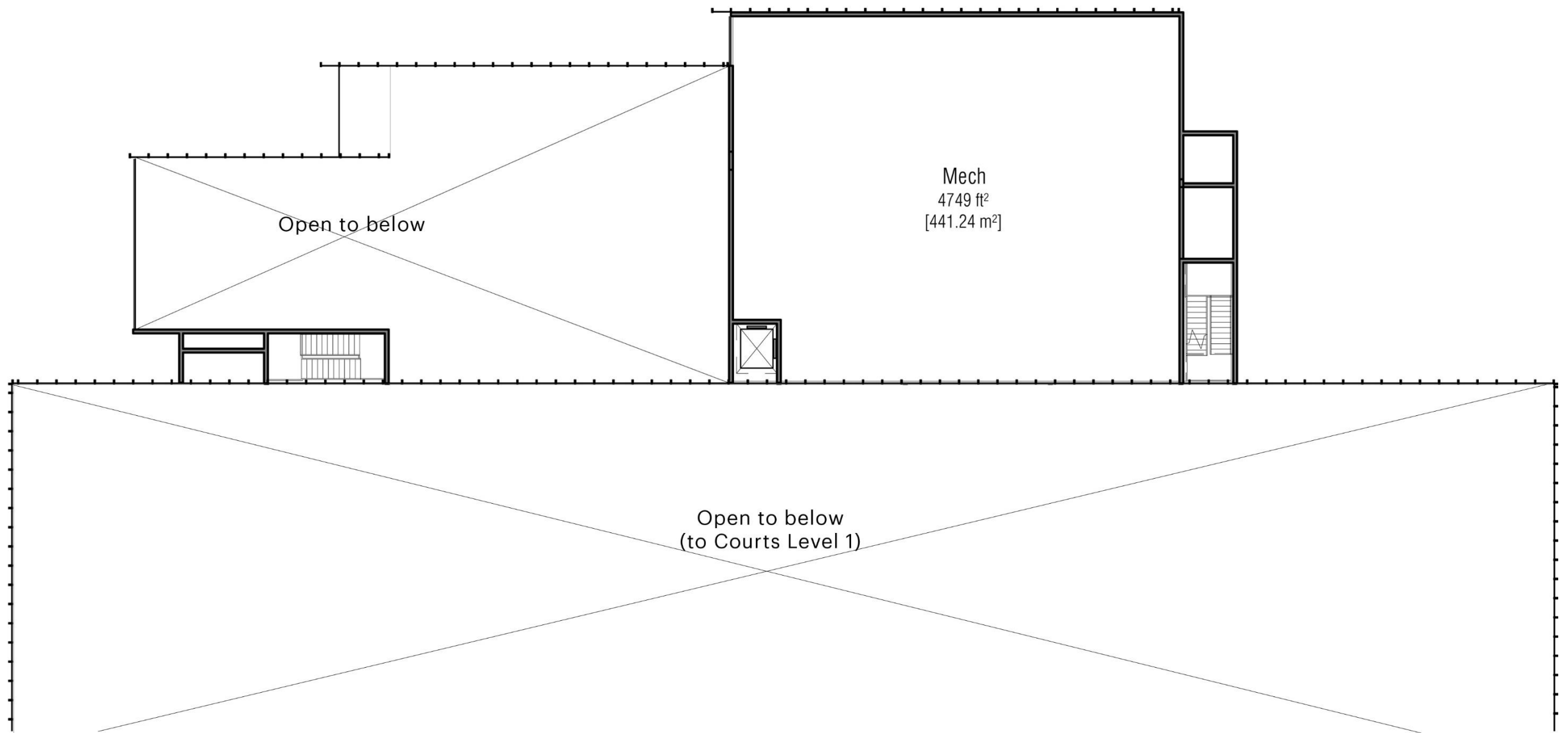


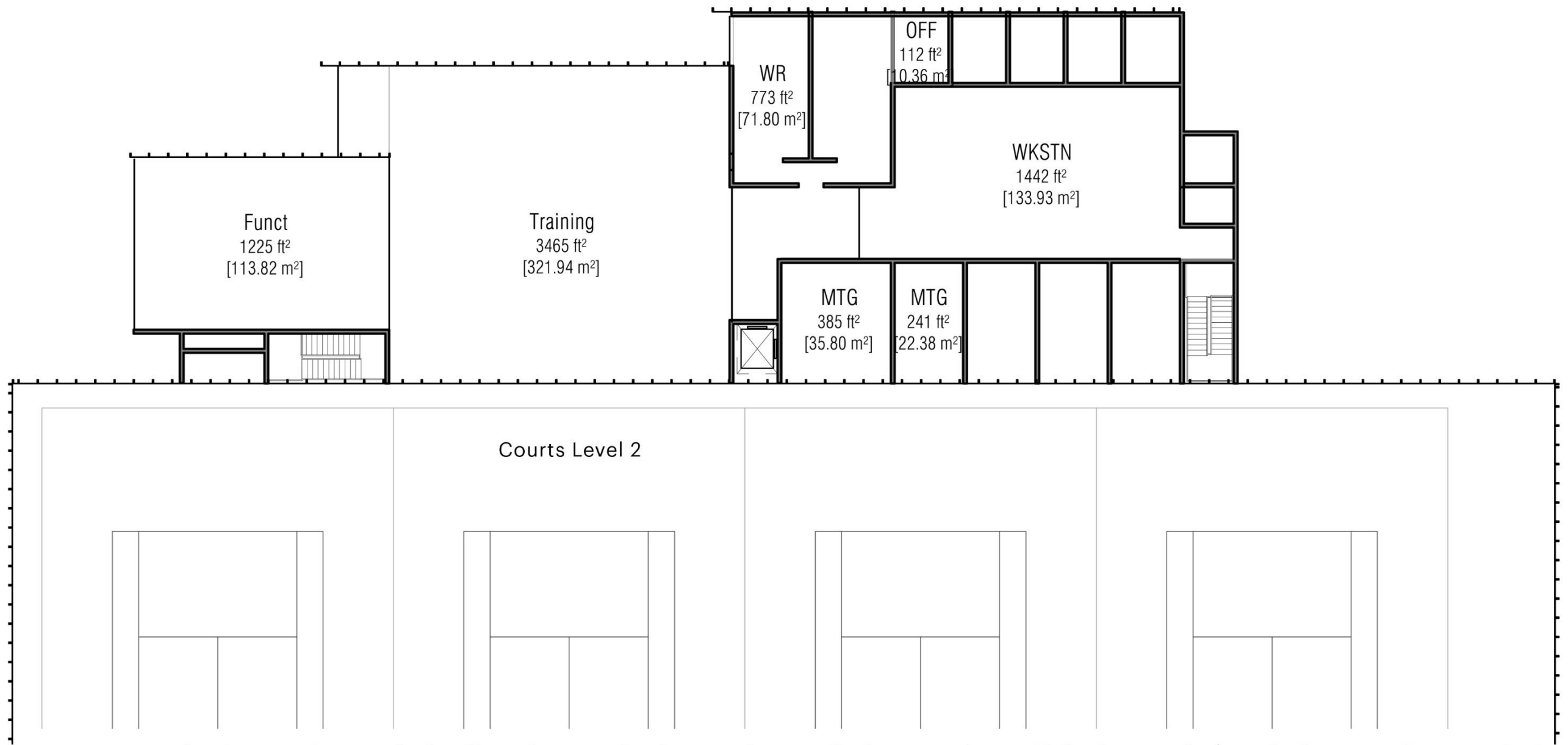


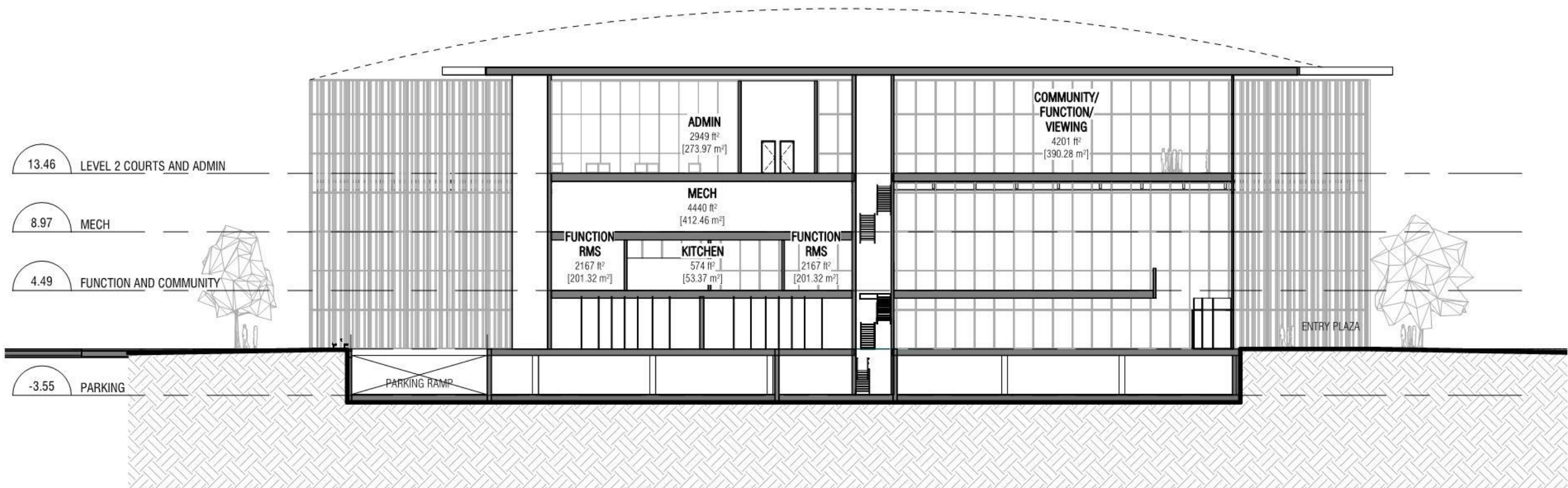


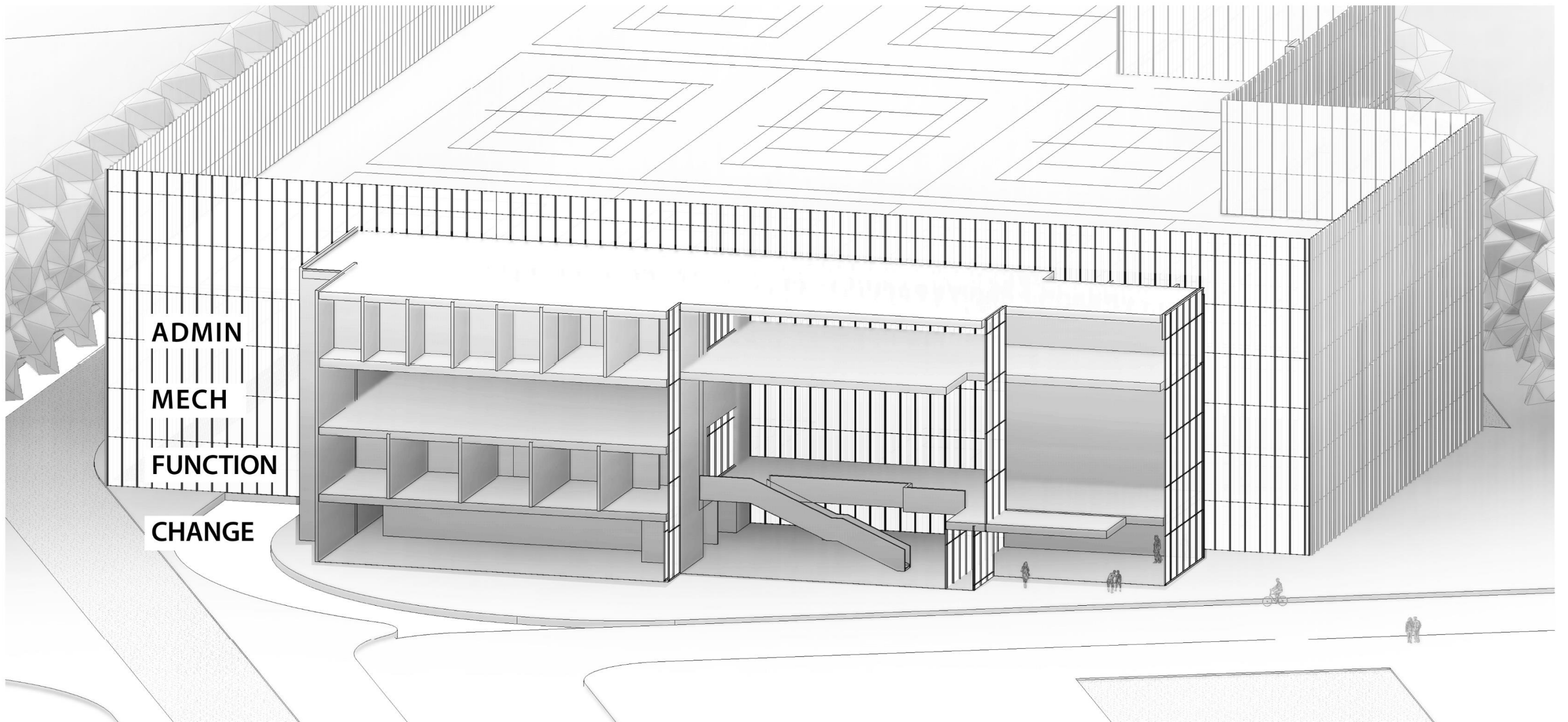


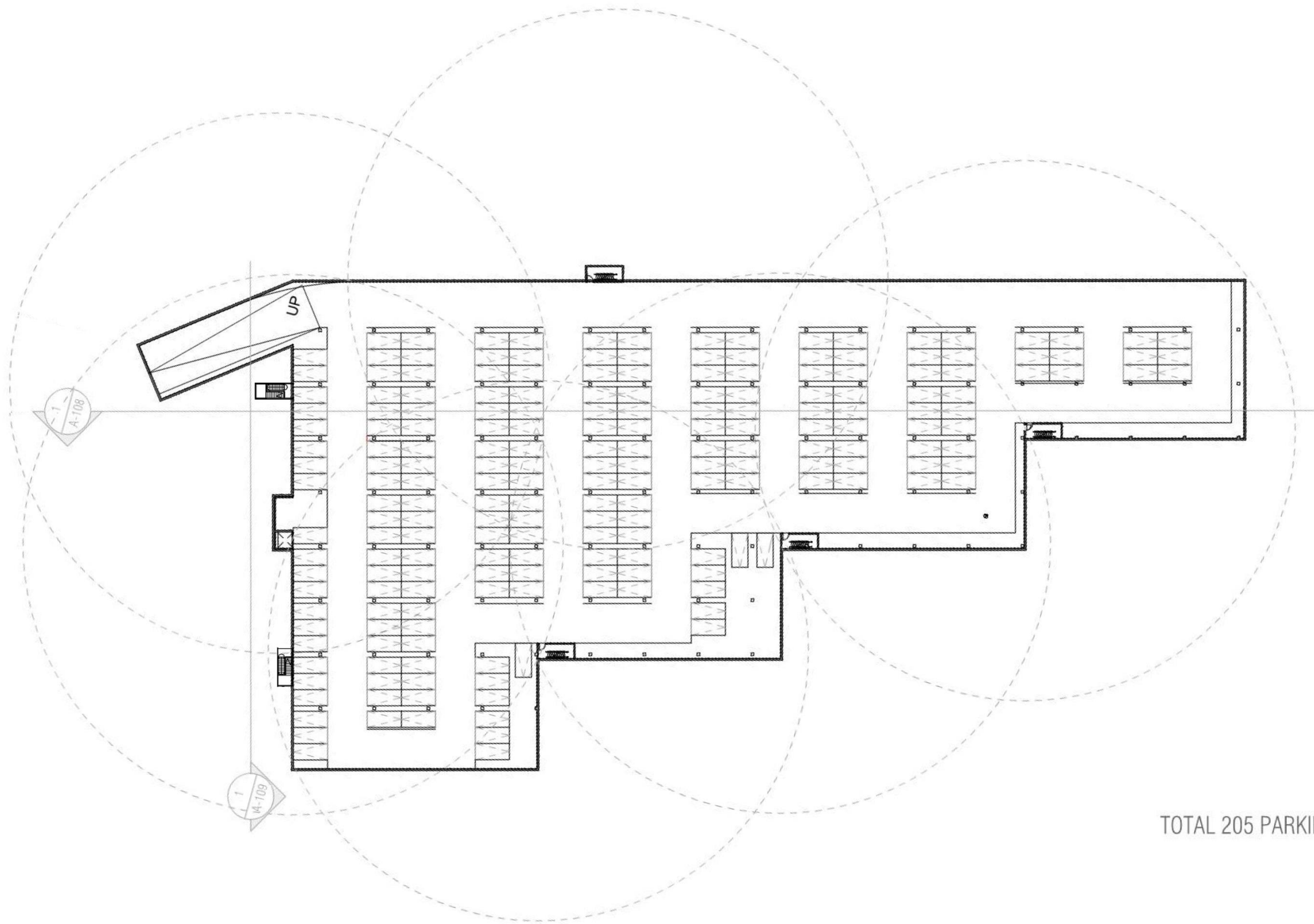












TOTAL 205 PARKING STALLS

