

**2.2M**  
ONTARIANS PLAYED  
TENNIS LAST YEAR\*

**920,000**  
ARE FREQUENT PLAYERS\*

**41%**  
PLAY INDOOR TENNIS\*

  
TORONTO LEADS THE  
COUNTRY IN FREQUENT  
LEVELS OF PLAY\*\*



*A Sport for Life.*

\* 2015 Canadian Tennis Brand Health Study – Ontario Provincial Report – prepared for Tennis Canada by Charlton Strategic Research Inc.  
\*\* 2015 Canadian Tennis Brand Health Study – prepared for Tennis Canada by Charlton Strategic Research Inc.

















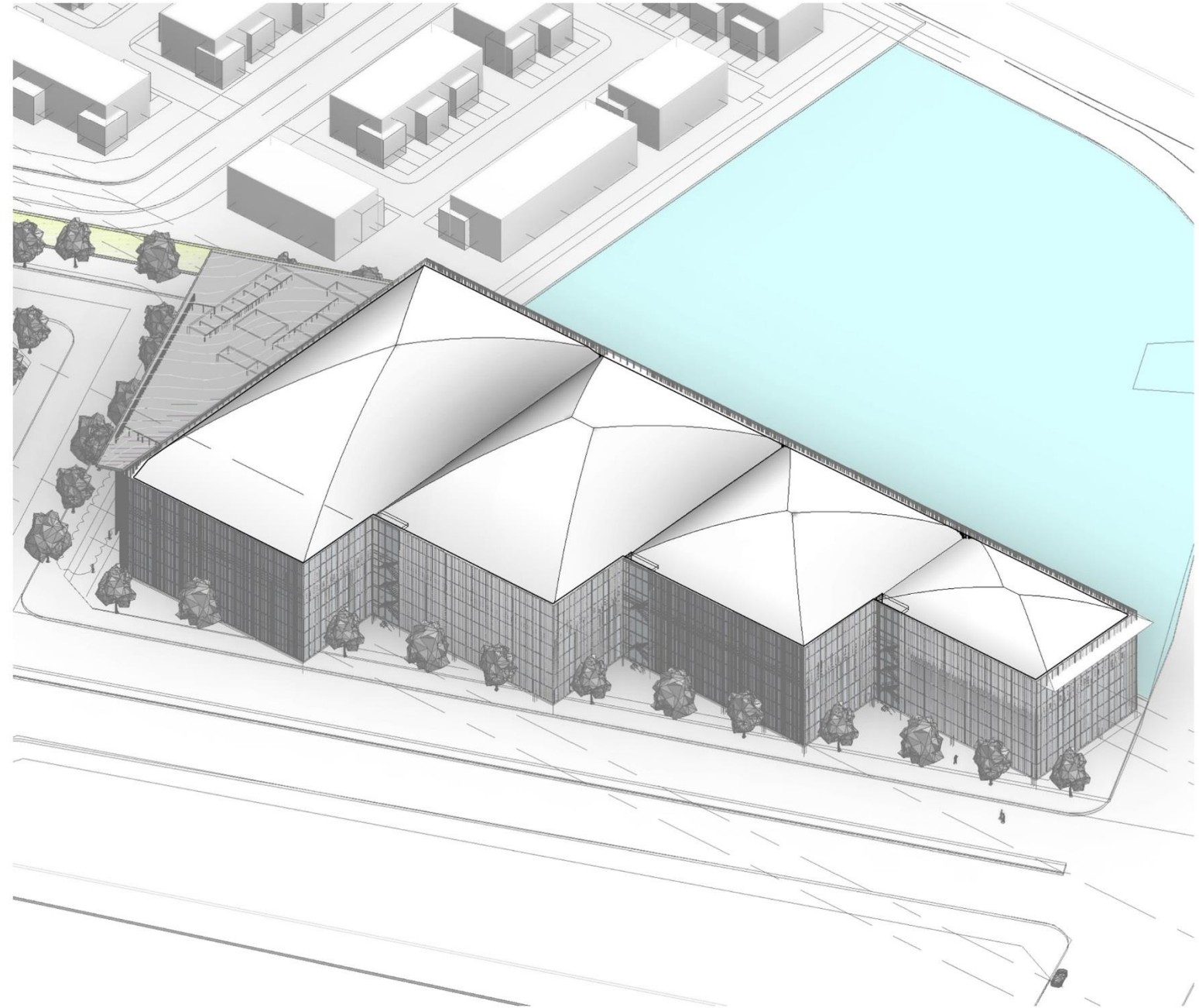
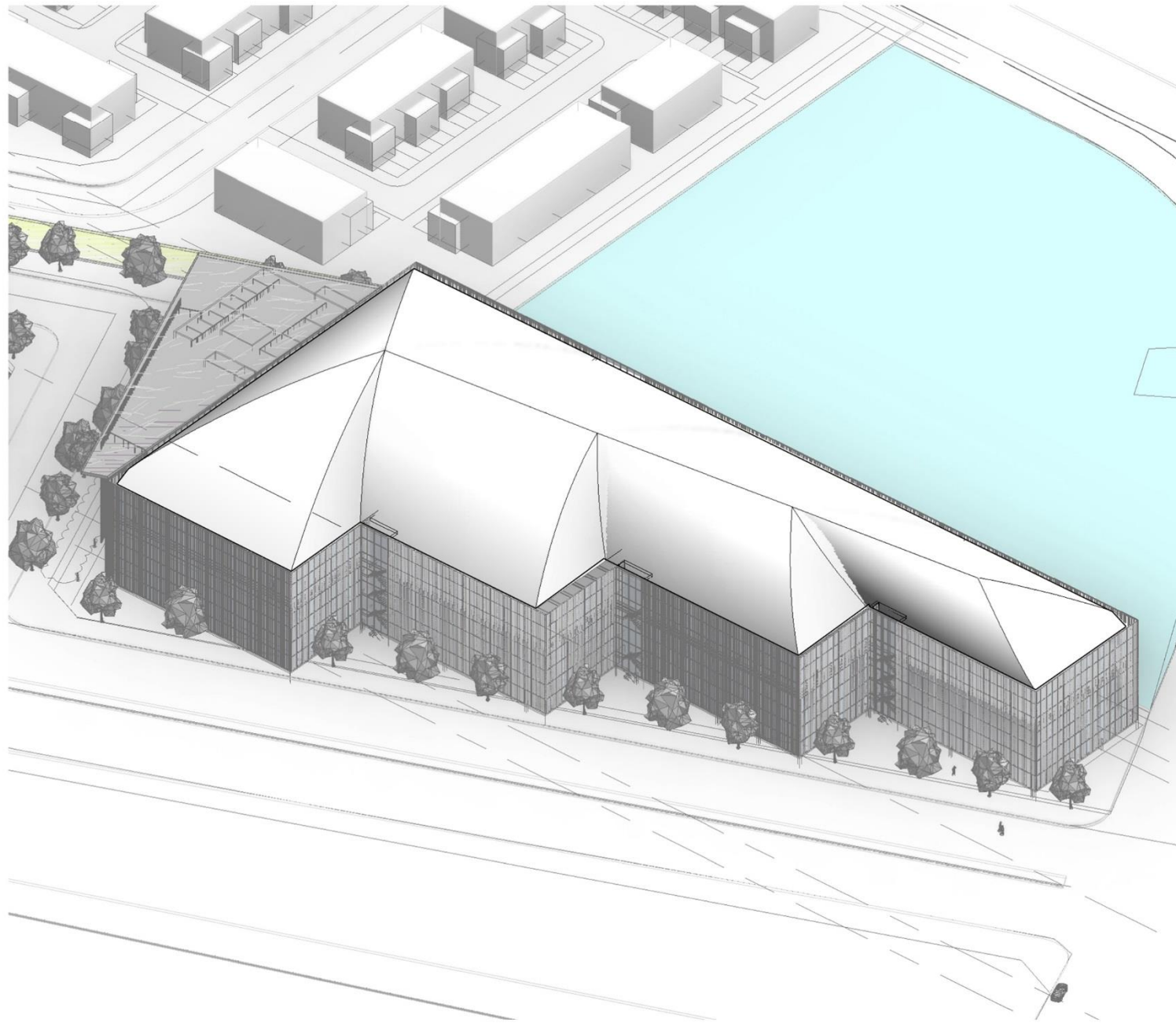




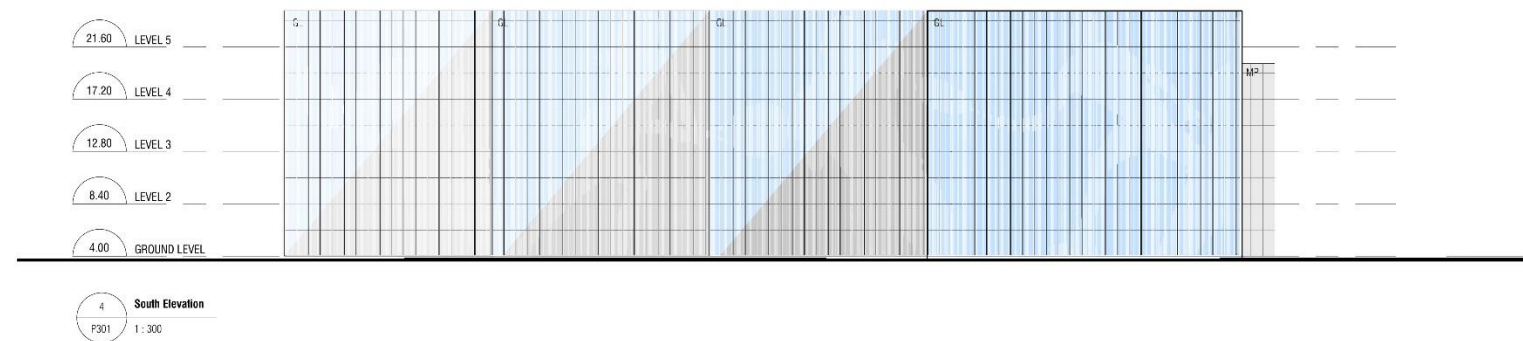
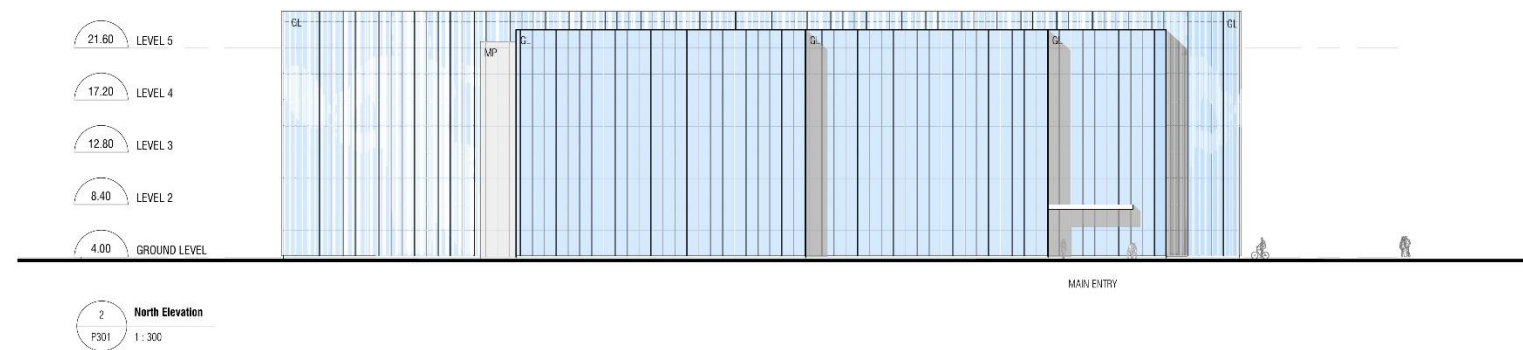
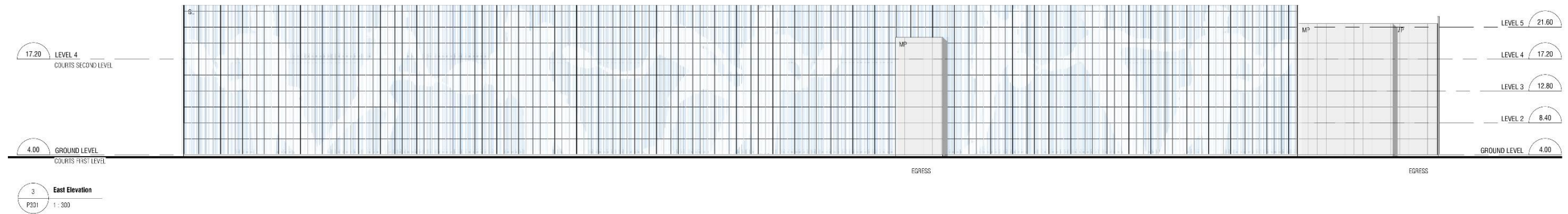
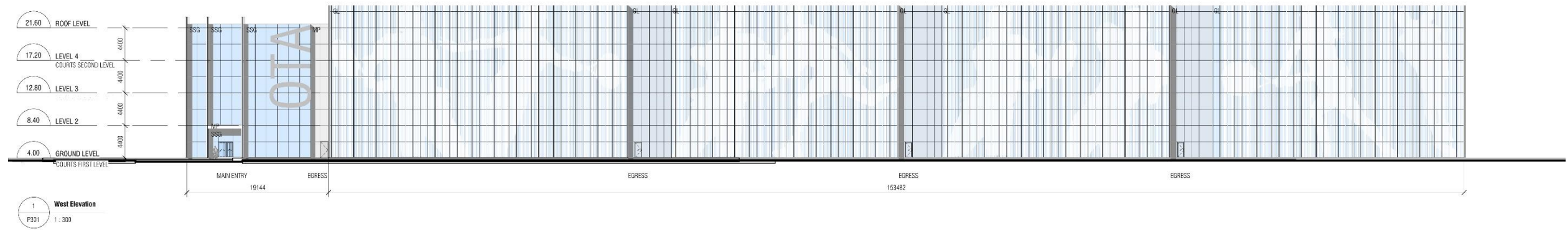




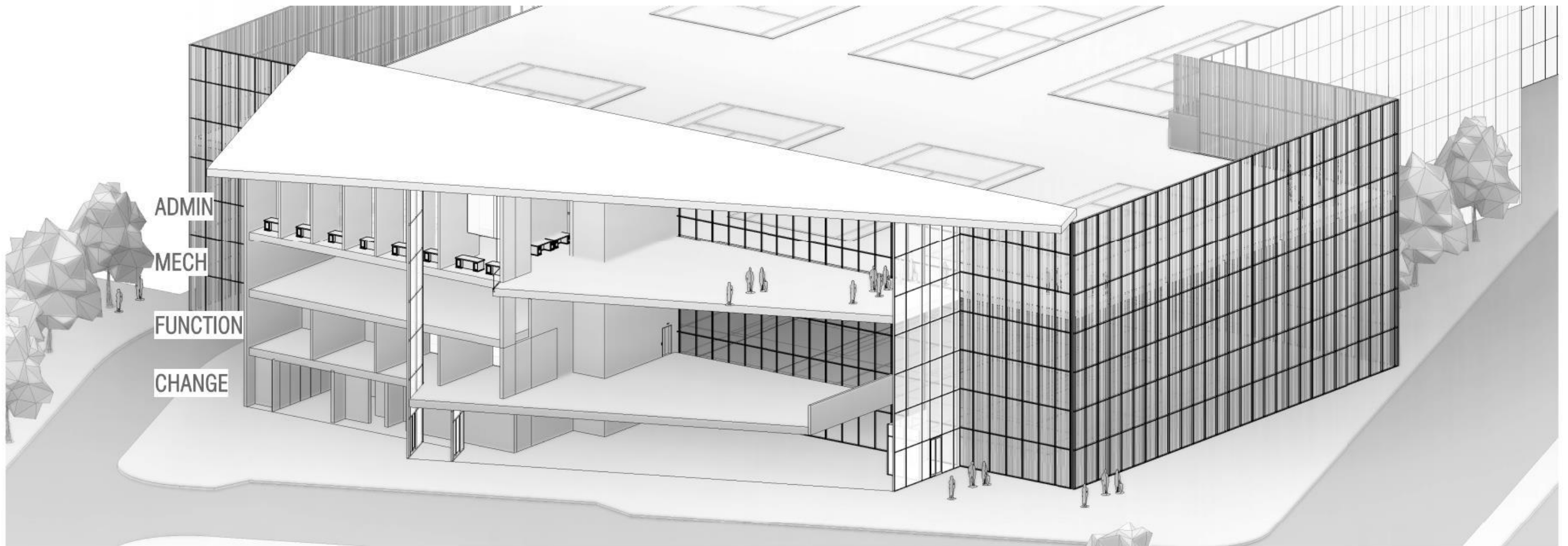




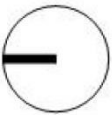
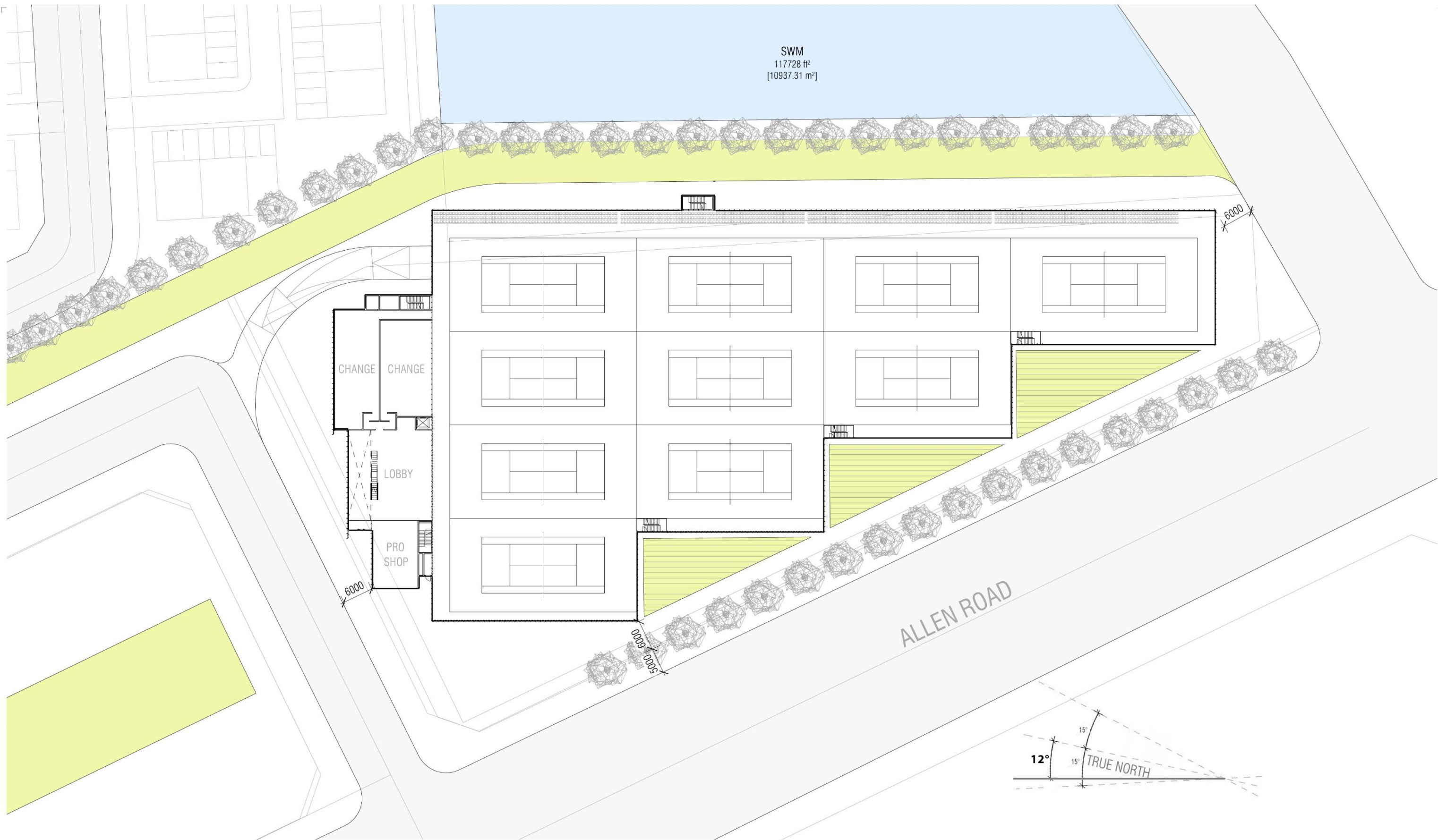




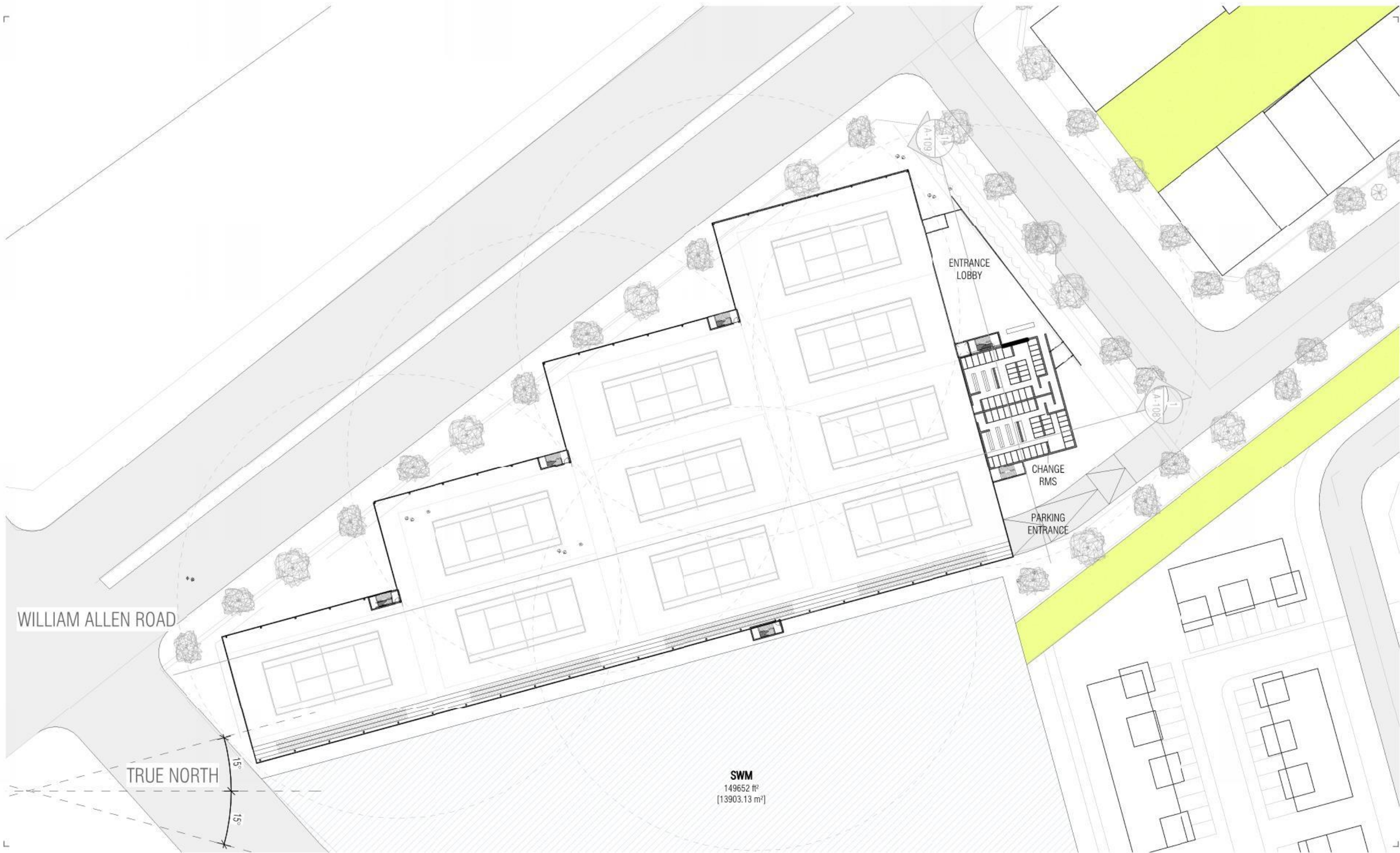












WILLIAM ALLEN ROAD

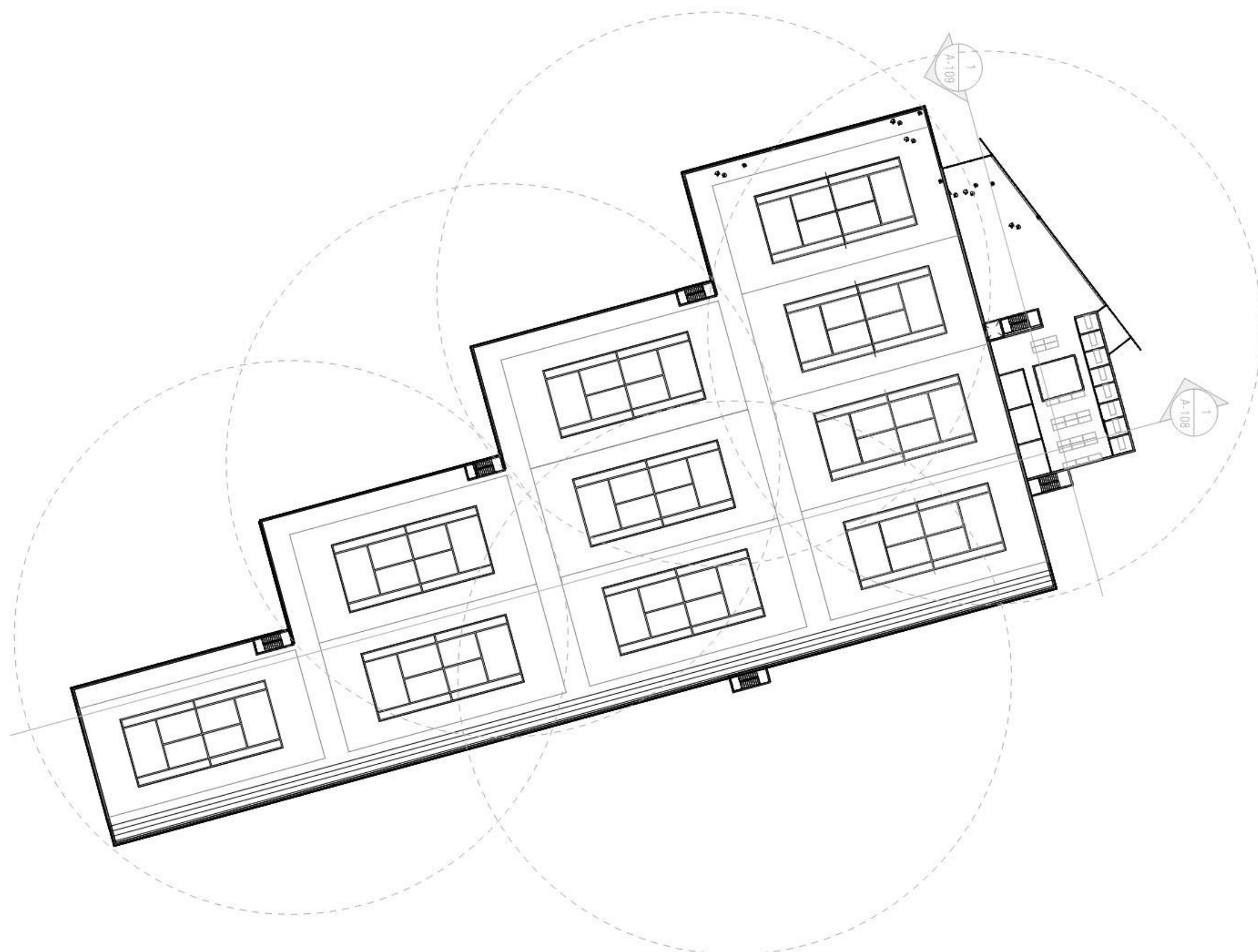
TRUE NORTH

**SWM**  
149652 ft<sup>2</sup>  
[13903.13 m<sup>2</sup>]

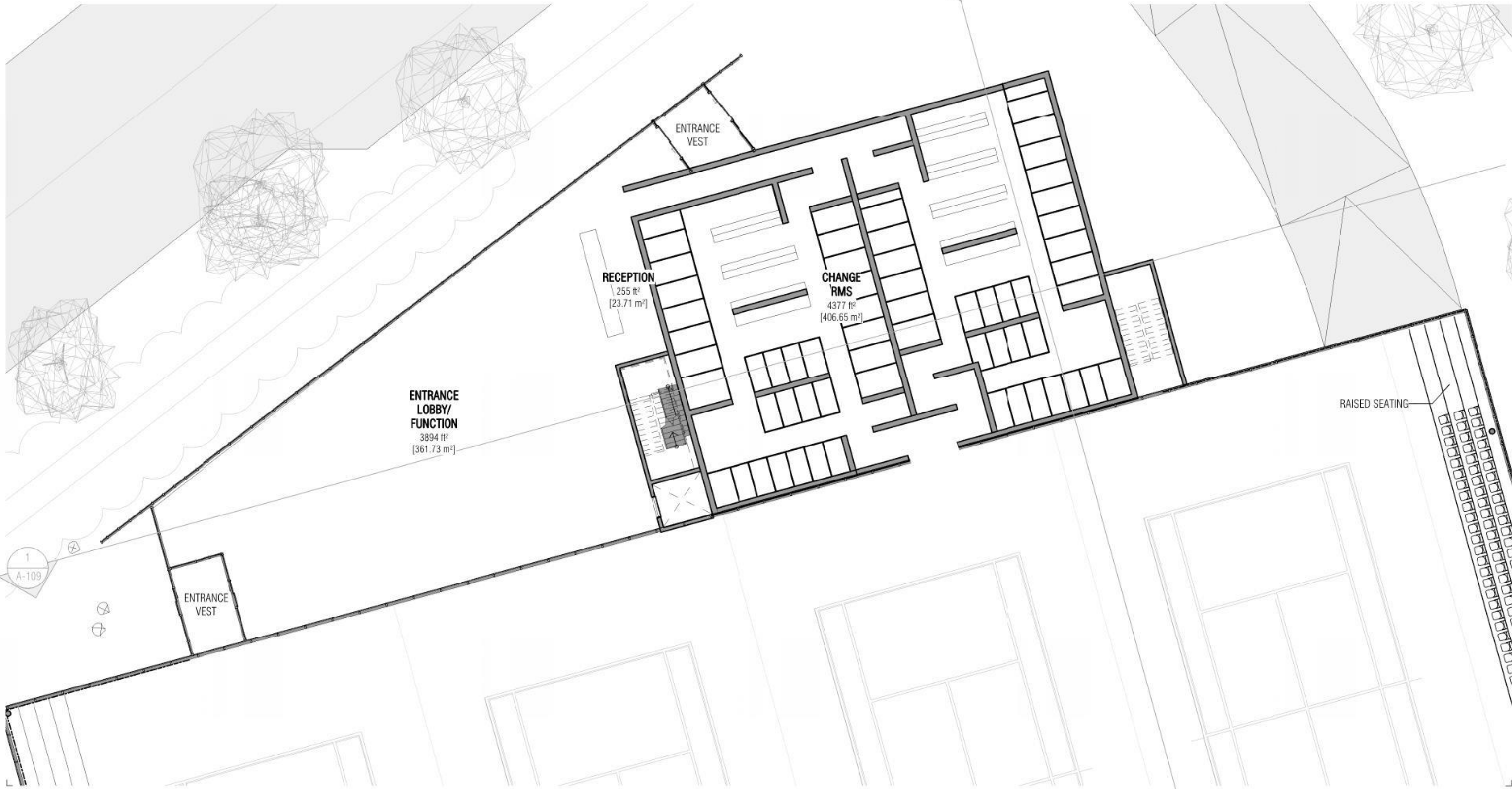
ENTRANCE  
LOBBY

CHANGE  
RMS  
PARKING  
ENTRANCE





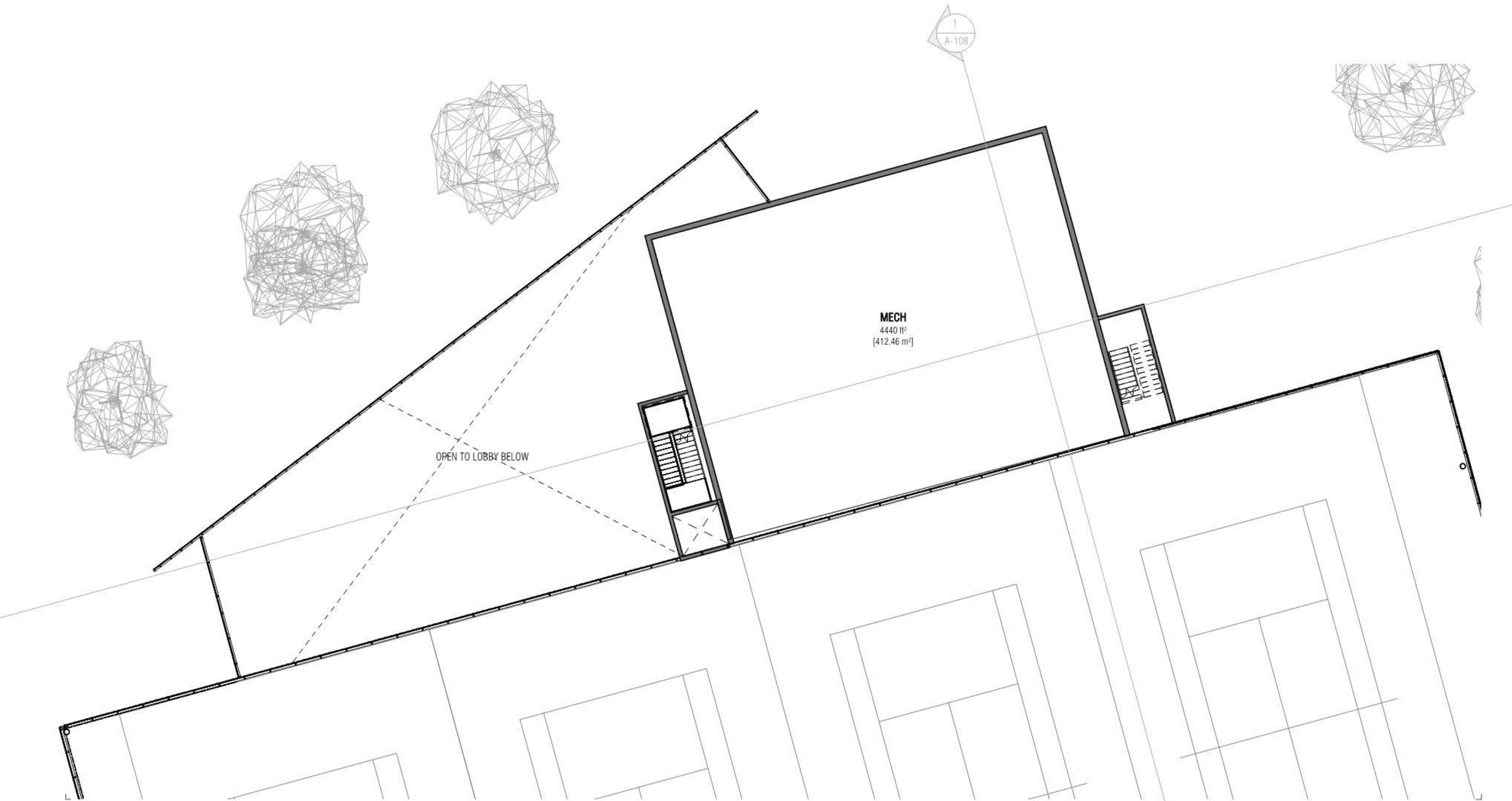








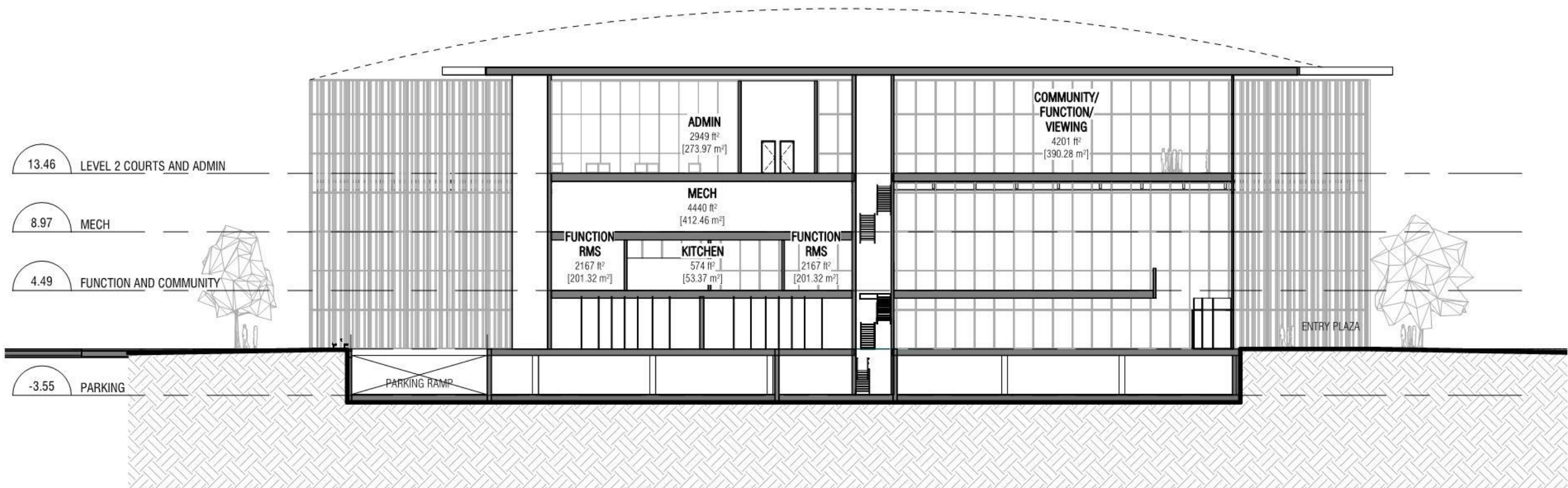




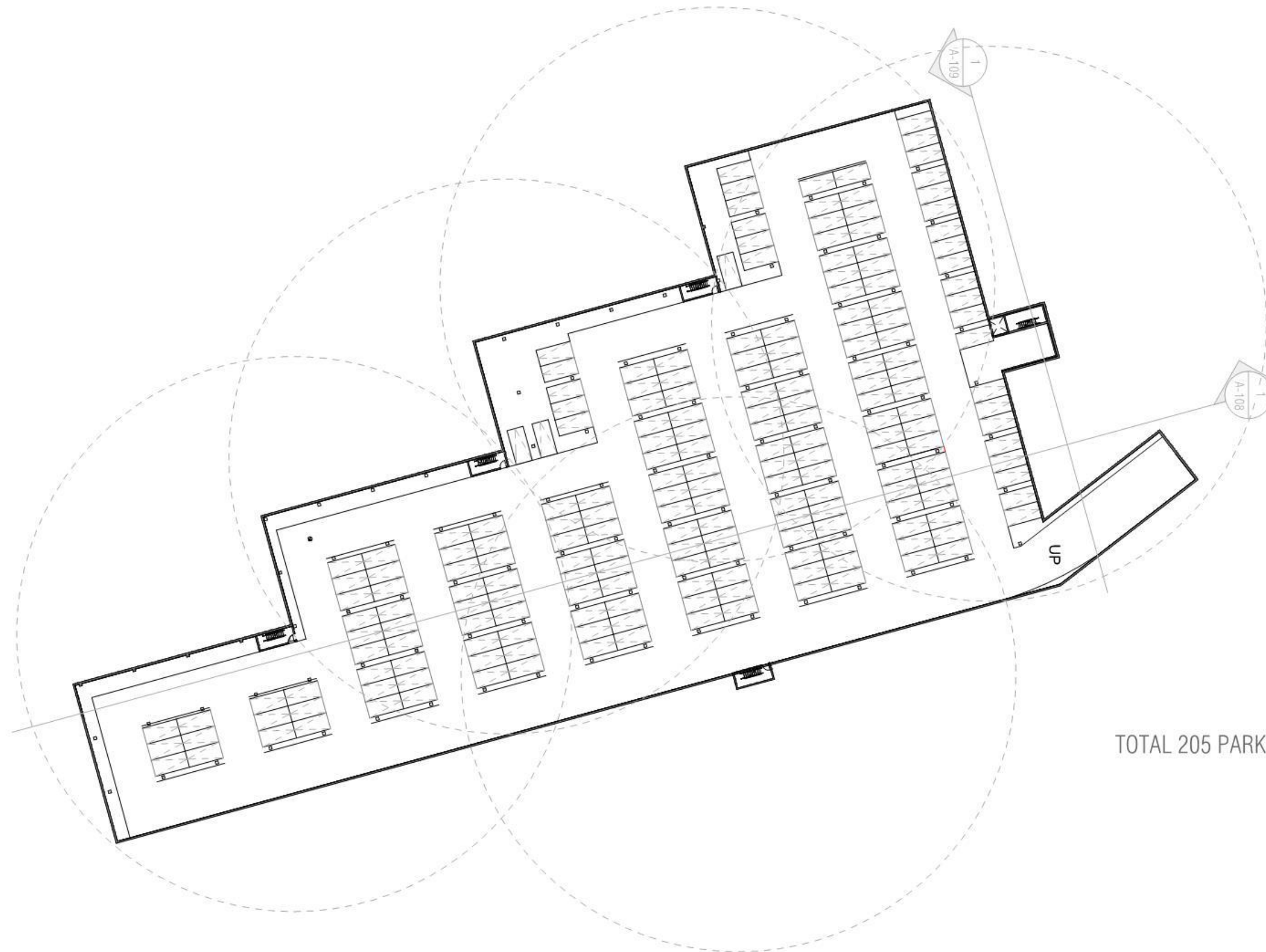












TOTAL 205 PARKING STALLS

