



**PB30.1**

**95 St. Joseph Street - Notice of  
Intention to Designate under  
Part IV, Section 29 of the  
Ontario Heritage Act**

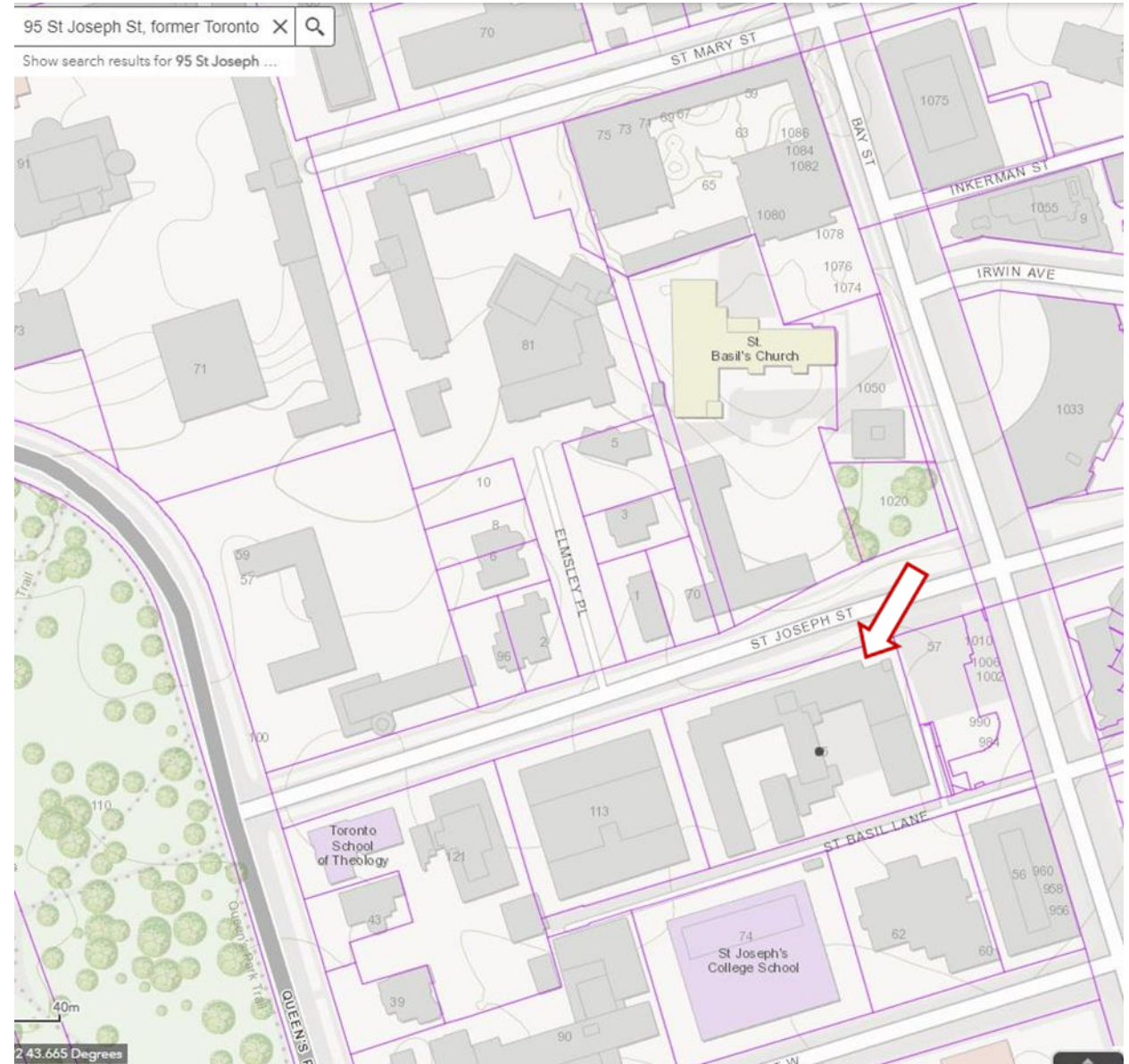
# PB30.1

## 95 St. Joseph Street



Above: Aerial View of St. Michael's College looking south. The arrows marks St. Basil's Seminary

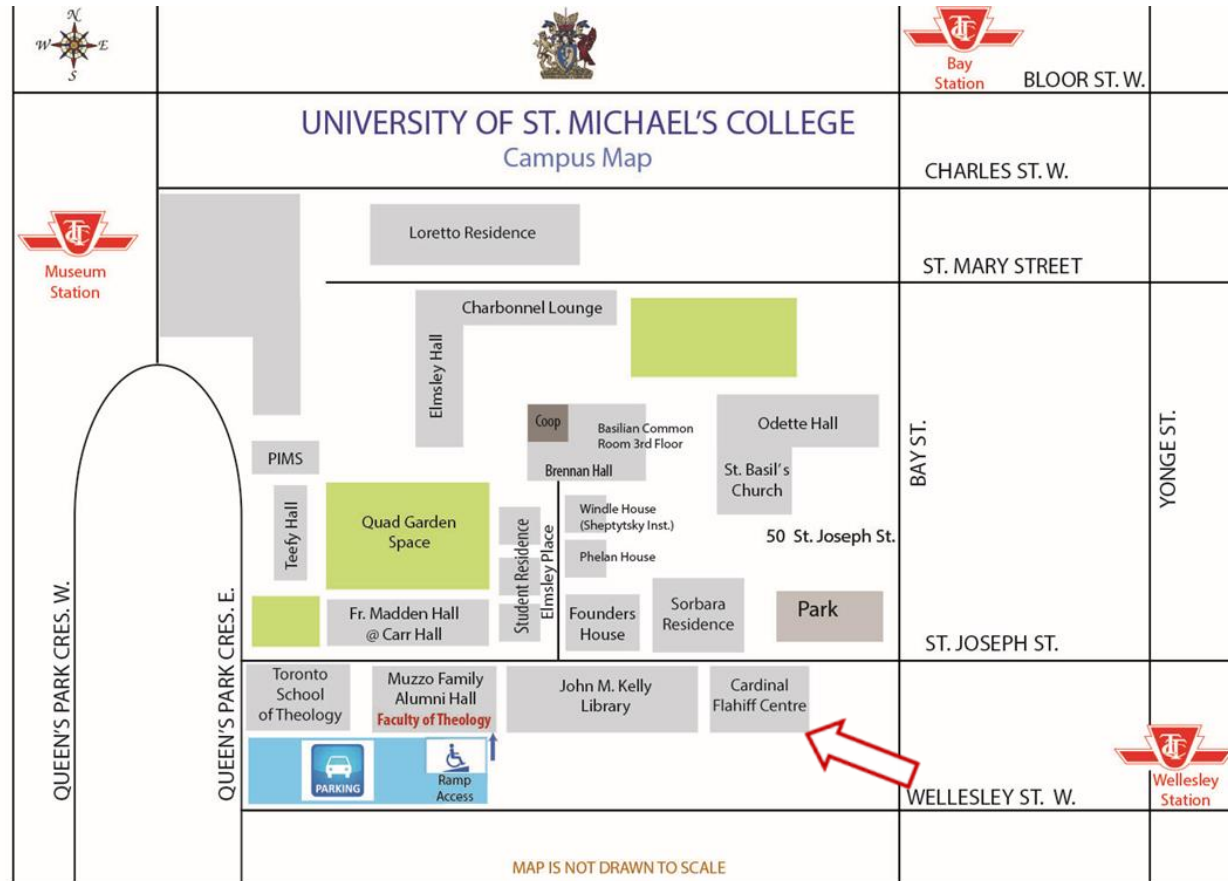
Right: This location map is for information purposes only; the exact boundaries of the property at 95 St. Joseph Street are not shown. The arrow marks the location of the property.





# PB30.1

## 95 St. Joseph Street



Above: University of St. Michael's College Campus Map, indicating St. Basil's Seminary, aka the Cardinal Flahiff Basilian Centre

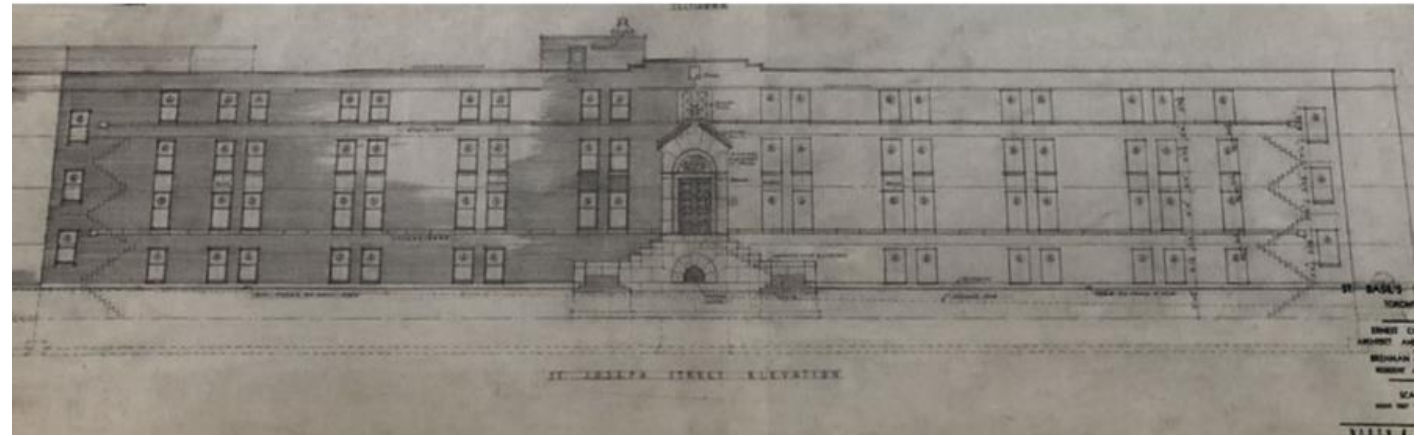
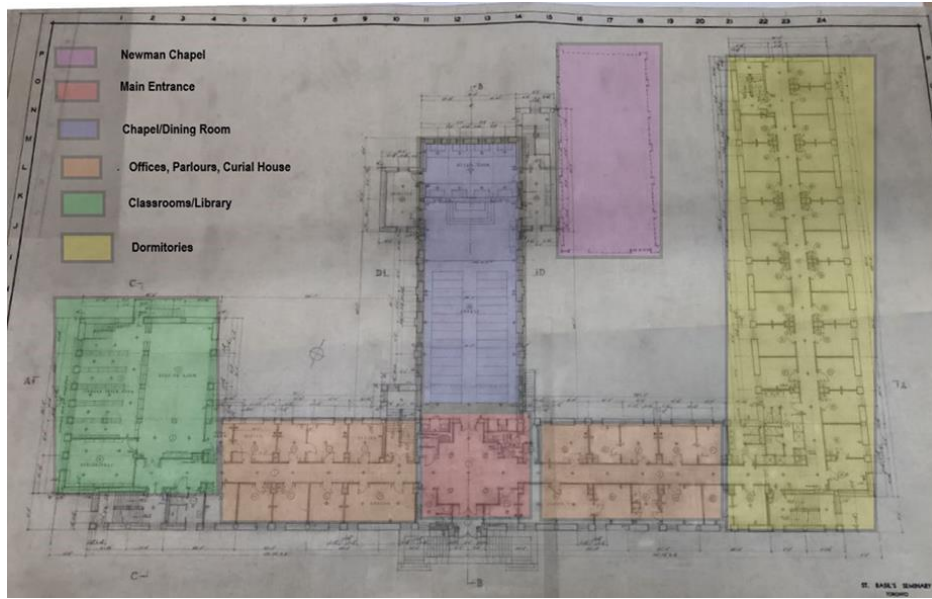
Top Right: 95 St. Joseph Street c1951

Bottom Right: 95 St. Joseph Street with 1979-80 addition



# PB30.1

## 95 St. Joseph Street



Above: Main Floor Plan, 1950, annotated with colour to show functions of classrooms, offices, entrance, worship, residential and the Newman Hall Chapel  
Top right: Drawing of the principal (north) elevation of St. Basil's Seminary  
Middle right: West courtyard, south and east elevations  
Bottom left: East courtyard, west elevation of the library and 1959 classroom additions





# PB30.1

## 95 St. Joseph Street



Top Left: St. Basil's Church and Odette Hall, 1856 with later additions



Top Middle: Newman Hall Chapel, 1913, A. W. Holmes



Top Right: St. Basil's Seminary, main entrance, 1951



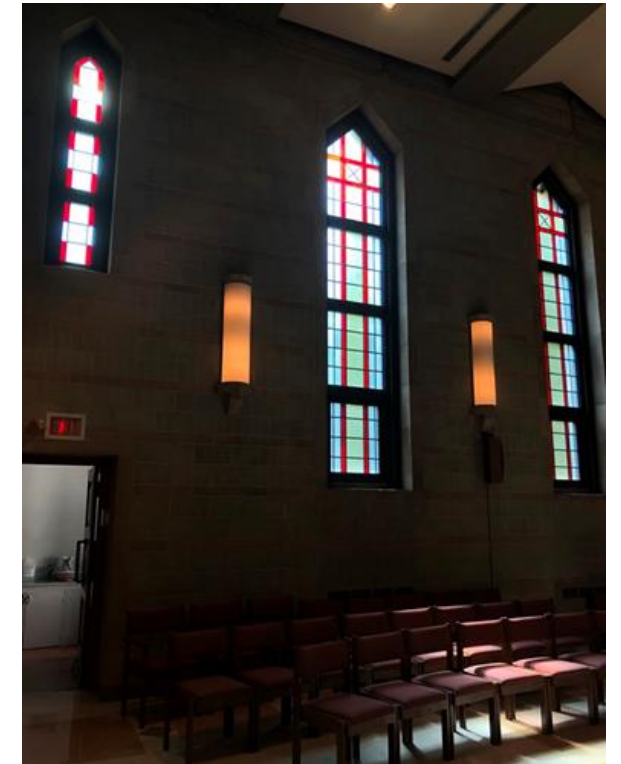
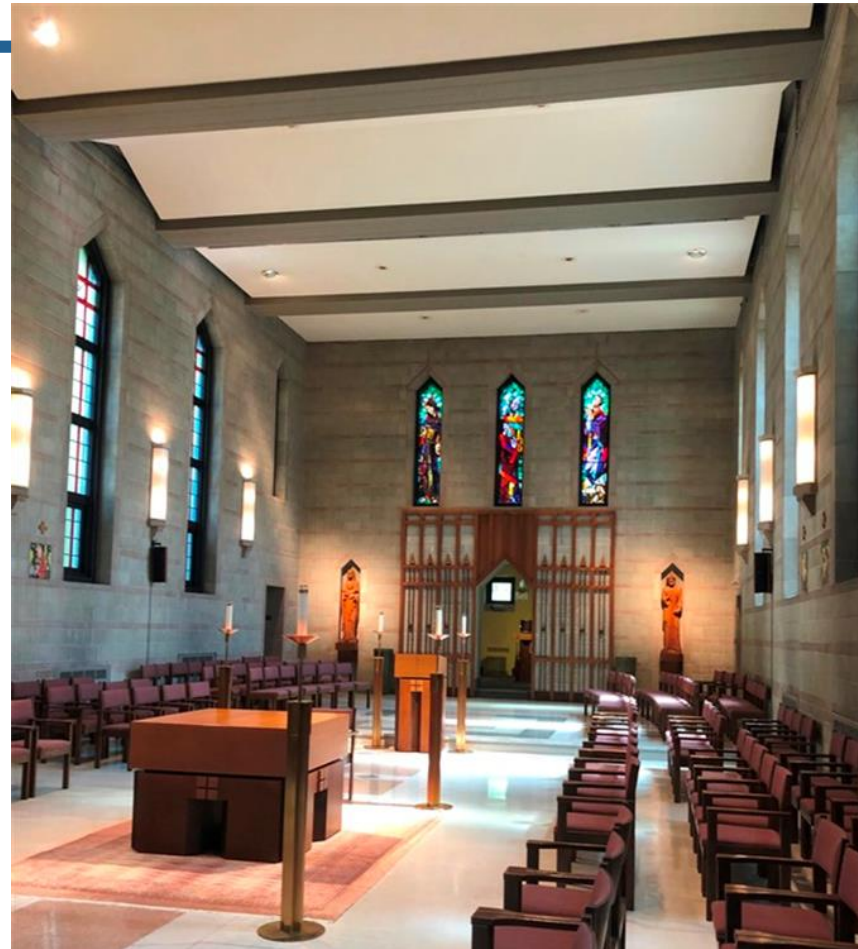
Bottom left: West elevation of the chapel



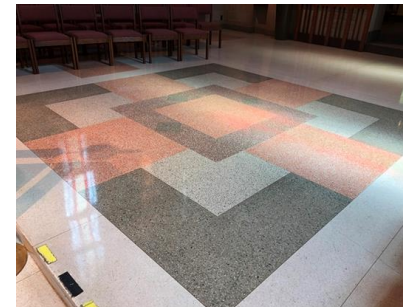
Bottom right: St. Basil's Seminary, north elevation, entrance with 1979-80 addition at the fourth floor level



**PB30.1**  
**95 St. Joseph Street**



Above: Main entrance lobby, looking north  
Middle: Chapel interior looking south  
Top right: West wall showing the stained glass windows designed by Cormier  
Bottom left: Terrazzo floor detail in the chapel  
Bottom right: east wall showing the details of the concrete block, two of the Stations of the Cross and the light fitting designed by Cormier





## PB30.1 95 St. Joseph Street

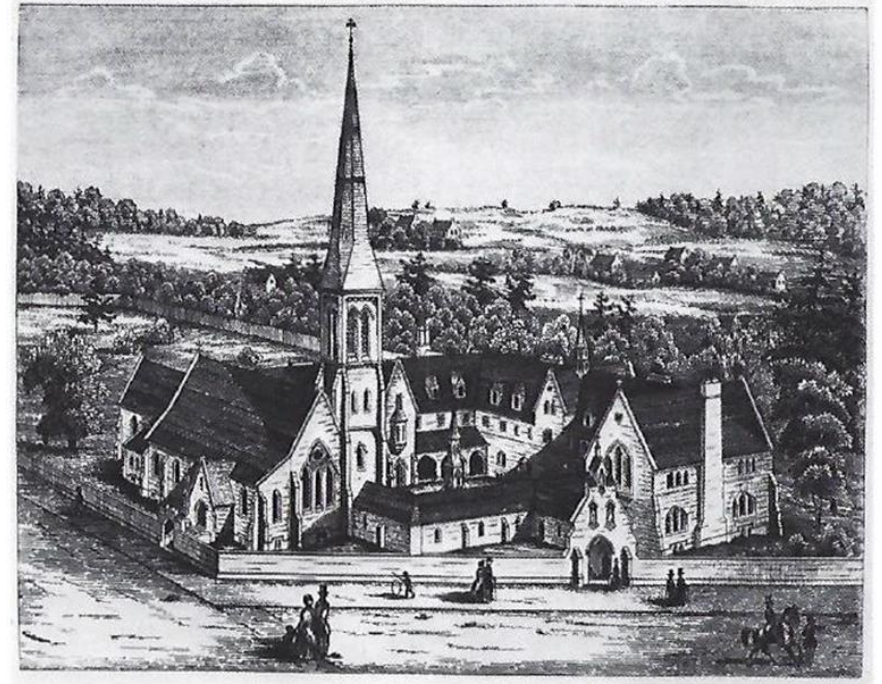
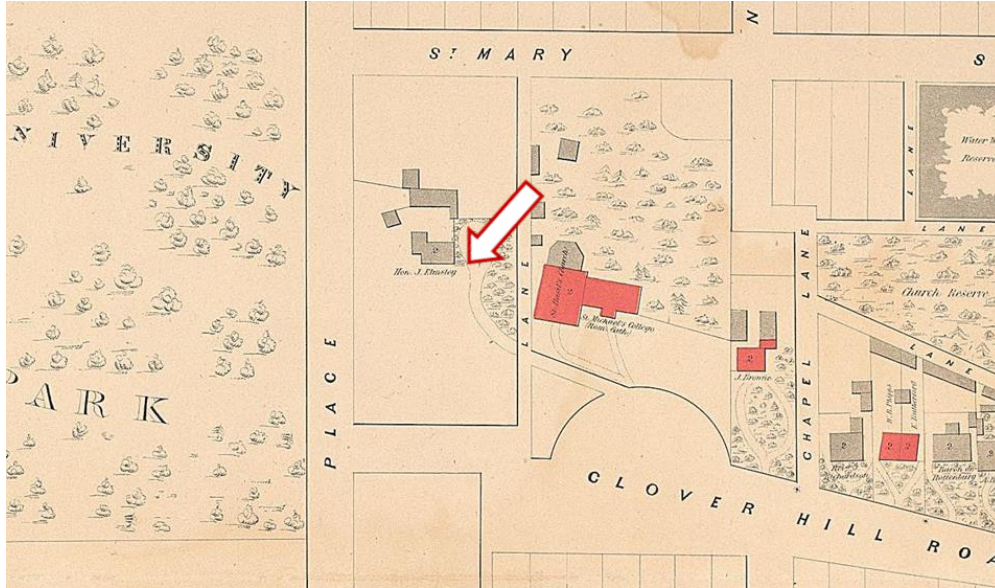


Left: Newman Hall Chapel, 1913 as originally constructed  
Centre: Newman Hall Chapel, principal, north elevation  
Right: Chapel, side, west elevation  
Bottom, Left and Right: South elevation of St Basil's Seminary with Newman Chapel as viewed from St. Basil Lane





## PB30.1 95 St. Joseph Street



Above: 1858 map showing the newly constructed St. Basil's Church and St. Michael's College, north of Clover Hill Road, now St. Joseph Street, and east of "University Park".

Top Right: 1855, William Hay perspective drawing of his proposal for St. Basil's Church and St. Michael's College, looking north-east

Bottom Right: 1914 photograph looking north towards the St. Michael's College complex with St. Basil's Church on the left and Odette Hall in the centre and later additions by A. W. Holmes on the right.





# PB30.1

## 95 St. Joseph Street



Above: 1945 Map showing additions to St. Michael's College by A. W. Holmes from 1914-1938

Top Right: St. Augustine's Seminary, 1910-1913

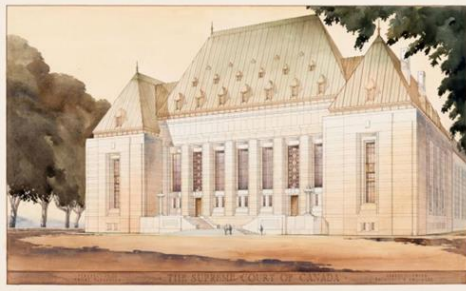
Centre: Teefy Hall and the Pontifical Institute for Medieval Studies, 1929

Bottom Left: Typical stone work specified by A. W. Holmes and

Bottom Right: Brennan Hall, 1937



# PB30.1 95 St. Joseph Street



Above: Ernest Cormier with a maquette of his bronze doors for the United Nations General Assembly Building, c. 1951.  
Top centre: 1945 Aerial View of the University of Montreal, 1924-47  
Centre: Cormier House interior, 1930-31  
Top right: Aerial view showing Carr Hall and St. Basil's Seminary  
Bottom: Carr Hall, stone detail and south elevation



---

## PB30.1

### 95 St. Joseph Street



Above: South side of St. Joseph Street looking west from St. Basil's to the Kelly Library, 1969 and the Ontario Research Foundation Laboratories (now Muzzo Family Alumni Hall), 1930-1946

Above Centre: South side of St. Joseph Street looking east from the Ontario Research Foundation Laboratory

Top right: North side of St. Joseph Street, Sam Sorbara Hall and St. Basil's Church

Centre right: North side of St. Joseph Street, the gates at Elmsley Place

Bottom Right: North side of St. Joseph Street looking west from 96 St. Joseph to Carr Hall





# PB30.1

## 95 St. Joseph Street



Above: Aerial View of University of St. Michael's College campus looking north

Top Right: St. Basil's Church and Odette Hall

Centre: View, 1951, from St. Basil's Church and Odette Hall looking south towards St. Basil's Seminary

Bottom right: Elmsley Hall, 1955