

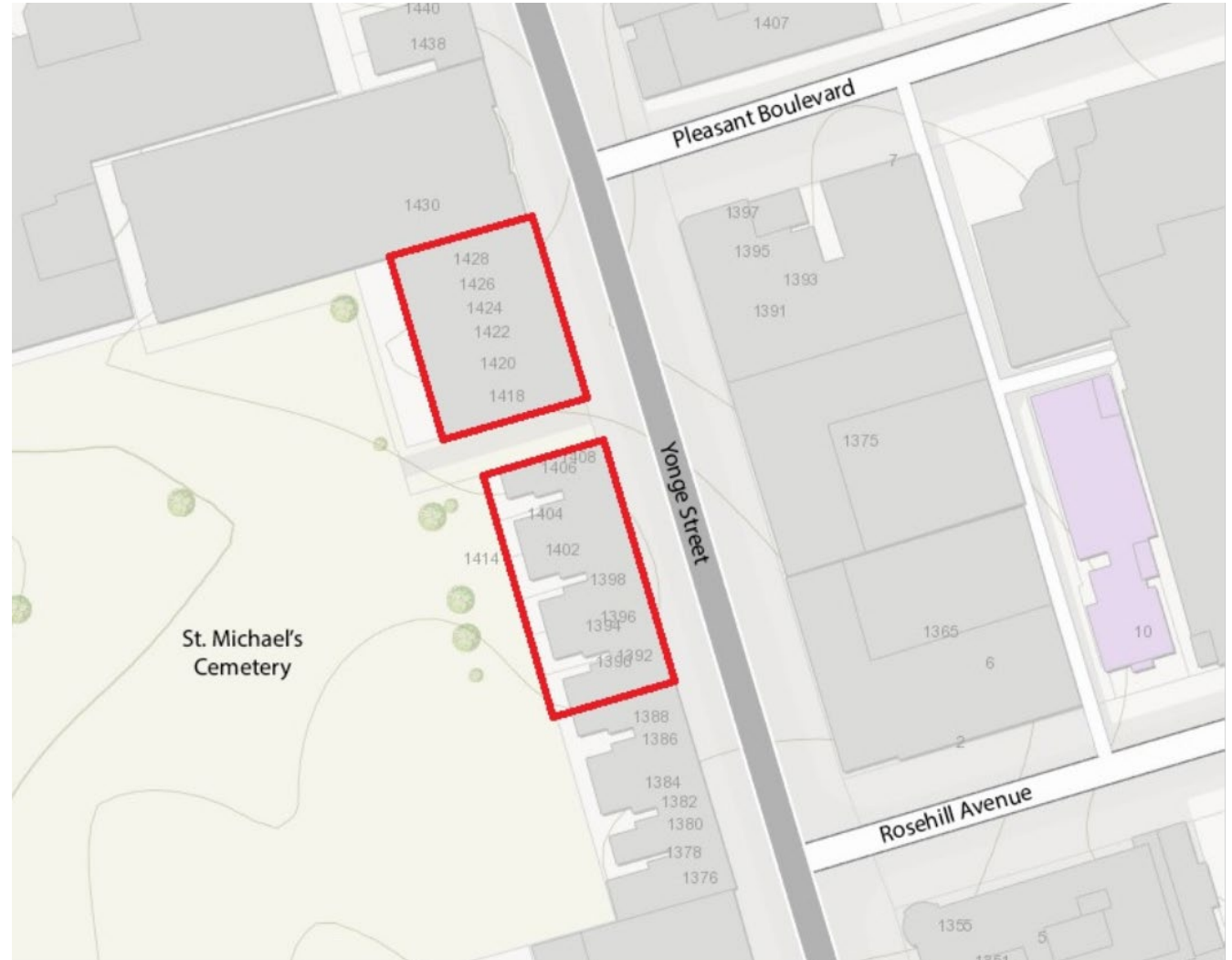


# **PB33.3**

**1390-1406 and 1420 Yonge Street -  
Notice of Intention to Designate a  
Property under Part IV, Section 29  
of the Ontario Heritage Act**

## PB33.3 1390-1406 & 1420 Yonge Street

This location map is for information purposes only; the exact boundaries of the property are not shown.



**PB33.3**  
**1390-1406 & 1420 Yonge Street**



Principal (east) elevation of 1390-1406 Yonge Street  
(Heritage Planning, 2022)

**PB33.3**  
**1390-1406 & 1420 Yonge Street**

Full-size (left) and detail view (right) of a single storefront at 1390-1406 Yonge Street. Note the terracotta roof, wooden brackets, and dichromatic brickwork with its raised pilasters, banding, and window surrounds.

(Heritage Planning, 2022)



**PB33.3**  
**1390-1406 & 1420 Yonge Street**



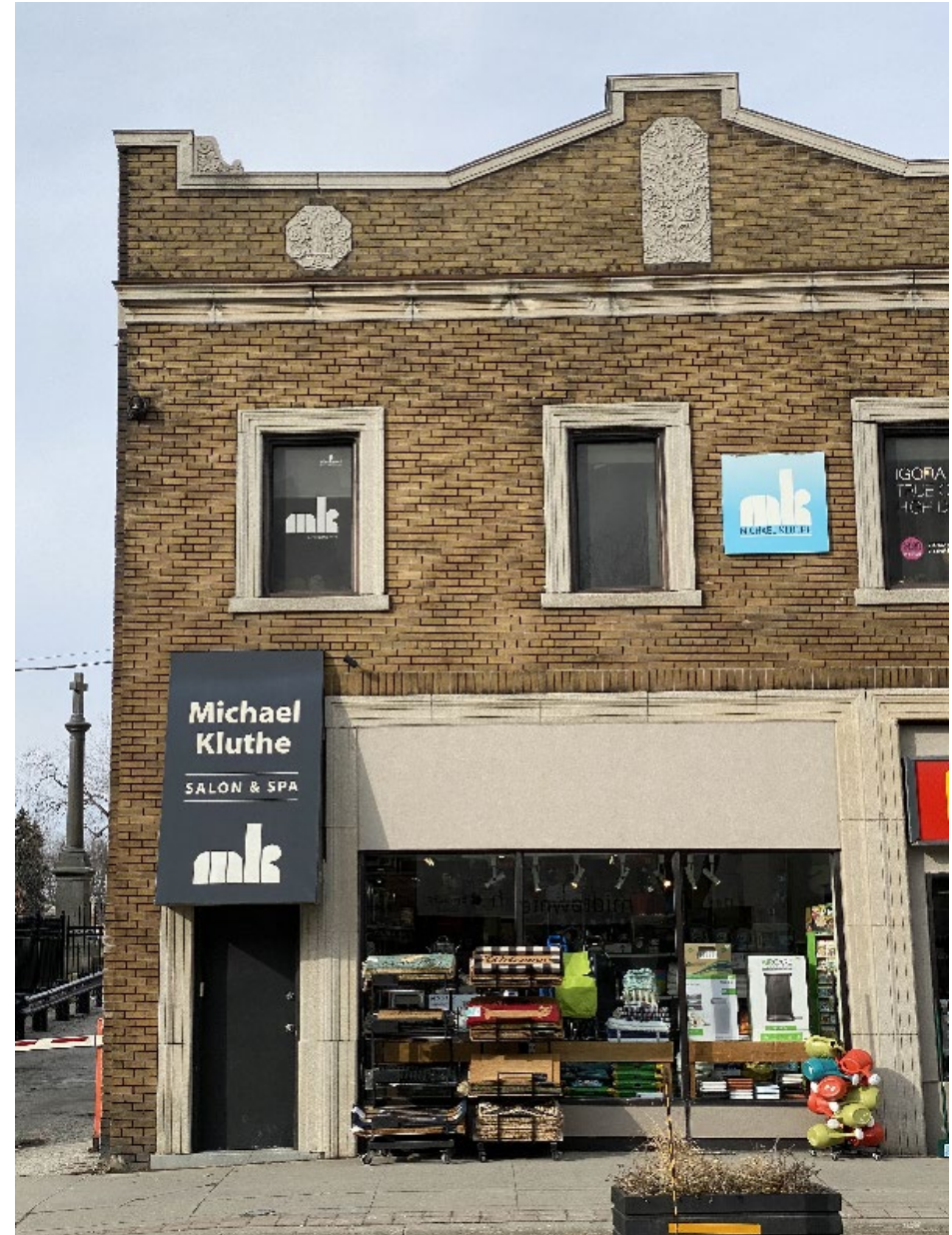
Principal (east) elevation of 1420 Yonge Street  
(Heritage Planning, 2022)

**PB33.3**  
**1390-1406 & 1420 Yonge Street**

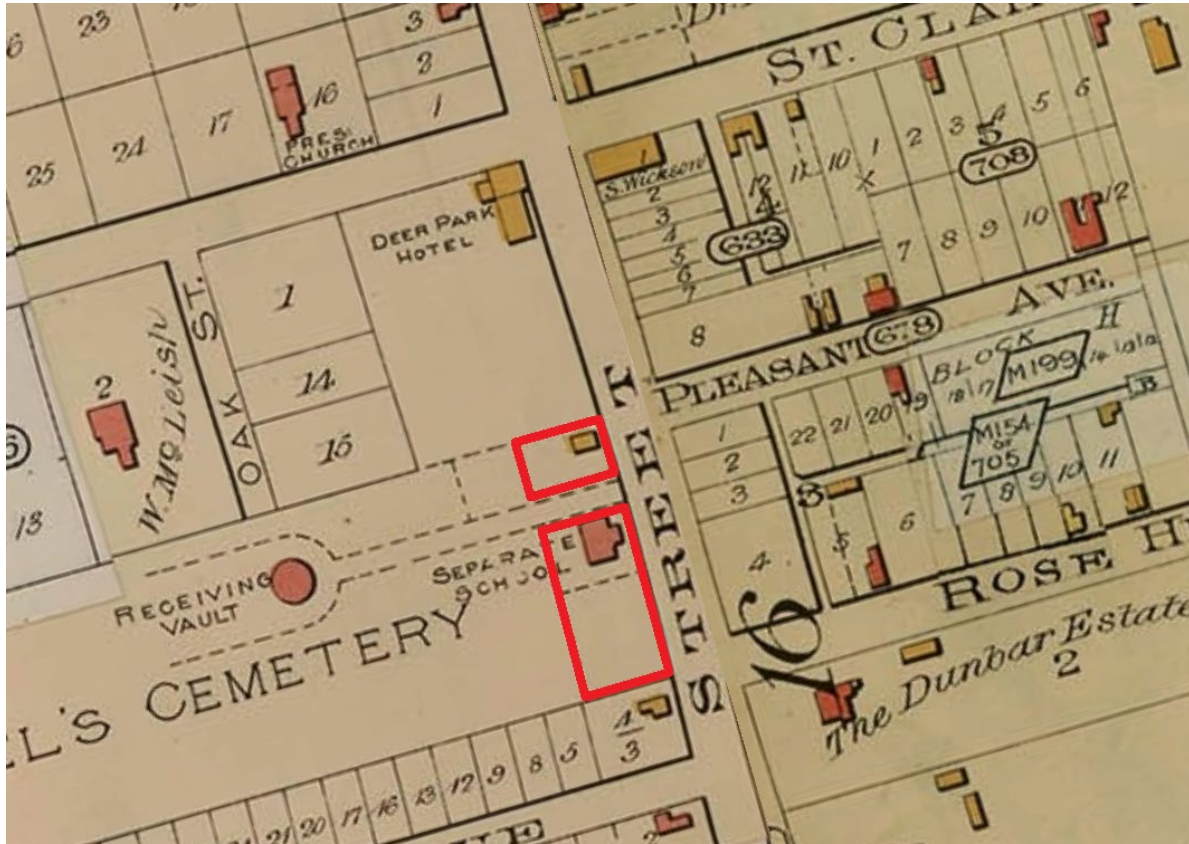


Detail view (top) of the largest of seven decorative stone panels spanning the segmented parapet roofline upon the principal (east) elevation of 1420 Yonge Street.

Full-size view (right) of a single storefront at 1420 Yonge Street. Note the stone surrounds framing the storefronts, side entrances, and windows, in addition to the stone banding detail above and below the parapet. (Heritage Planning, 2022)



## PB33.3 1390-1406 & 1420 Yonge Street



1903 Goad's Map, indicating the future location of 1390-1406 and 1420 Yonge Street. Note the driveway into St. Michael's Cemetery from Yonge Street with its view of the 1856-built mortuary vault.



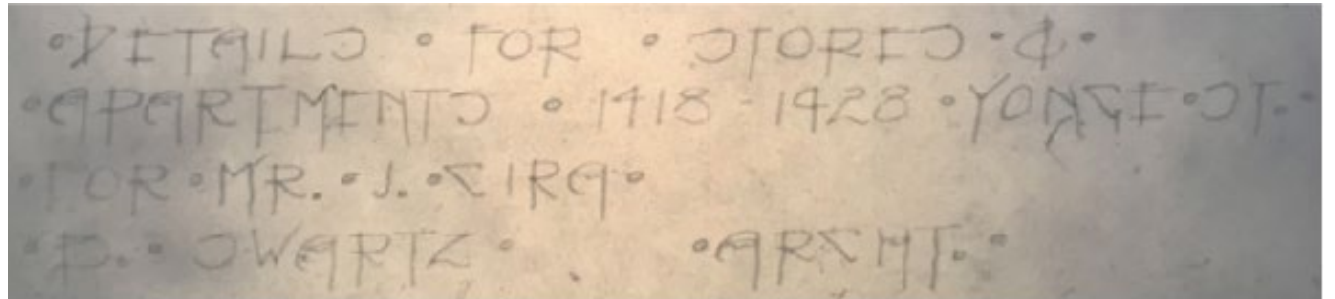
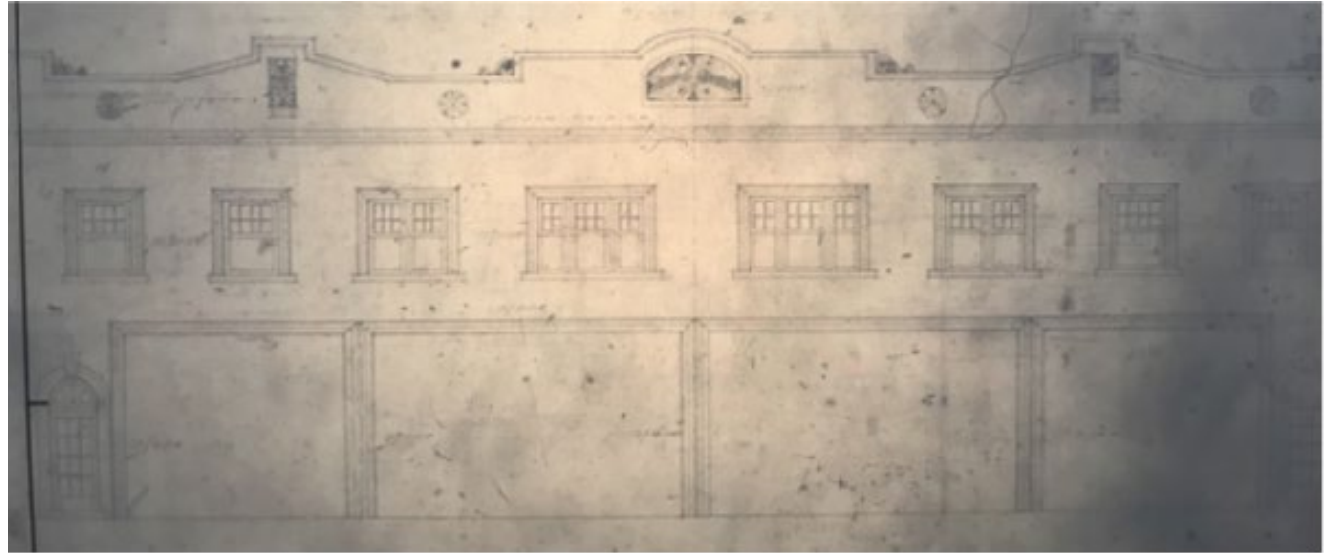
Entry to St. Michael's Cemetery between 1390-1406 and 1420 Yonge Street. Note the preserved, unobstructed view of the mortuary vault from Yonge Street. (Heritage Planning, 2022)

---

**PB33.3**  
**1390-1406 & 1420 Yonge Street**

Original architectural drawing (top) of the principal (east) elevation of 1420 Yonge Street by architect Benjamin Swartz for his client Joseph Cira.

Detail view (bottom) of the architect and property owner's names as included upon the same illustration.





---

**PB33.3**  
**1390-1406 & 1420 Yonge Street**

"Cira Bros. Food Store Closes." *Toronto Telegram*. June 18, 1971. Photo of the Cira family upon the closure of Cira Bros. Grocers (1929-1971).



---

**PB33.3**  
**1390-1406 & 1420 Yonge Street**

3D aerial view (looking west)  
of 1390-1406 and 1420  
Yonge Street. St. Michael's  
Cemetery Mortuary Vault and  
subject properties outlined in  
red. Apple Maps.

