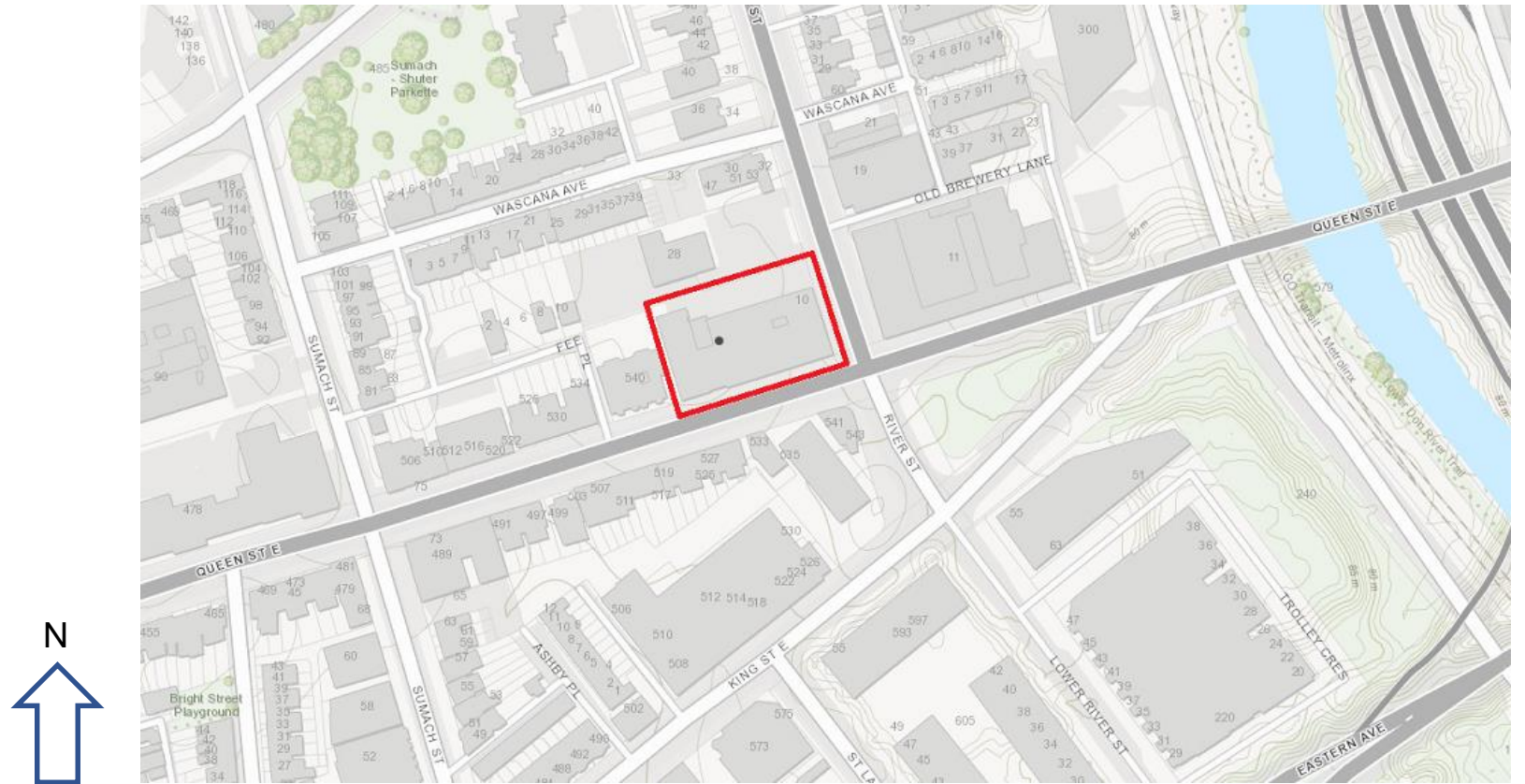




544 and 550 Queen Street East – Notice of Intention to Designate a Property under Part IV, Section 29 of the Ontario Heritage Act

544 and 550 Queen Street East

This location map is for information purposes only; the exact boundaries of the property are not shown.



544 and 550 Queen Street East



Context view of 544 and 550 Queen Street East at the northwest corner of Queen and River Street. Heritage Planning, 2022

544 and 550 Queen Street East

National Electric Heating Co. Ltd.



Postcard (1910) featuring New Method Laundry Co. Ltd. building at 2 River Street (550 Queen Street East) in its original two-storey configuration with rear addition and stables and the adjacent National Electric Heating Co. Ltd. building (with parapet/false front) at 544-548 Queen Street East. TPL - Baldwin Collection.



Archival photo (1914) looking west from the Don River along Queen Street East. New Method Laundry building with original signage and adjacent National Electric Heating building with parapet/false front visible along north side of the street (indicated by red arrow). City of Toronto Archives, Series 372, s0372_ss0058_it0353.

544 and 550 Queen Street East



West elevation of the former National Electric Heating building (today part of 544 and 550 Queen Street East). Heritage Planning, 2022



Front elevation of the former National Electric Heating building (today part of 544 and 550 Queen Street East). Heritage Planning, 2022.



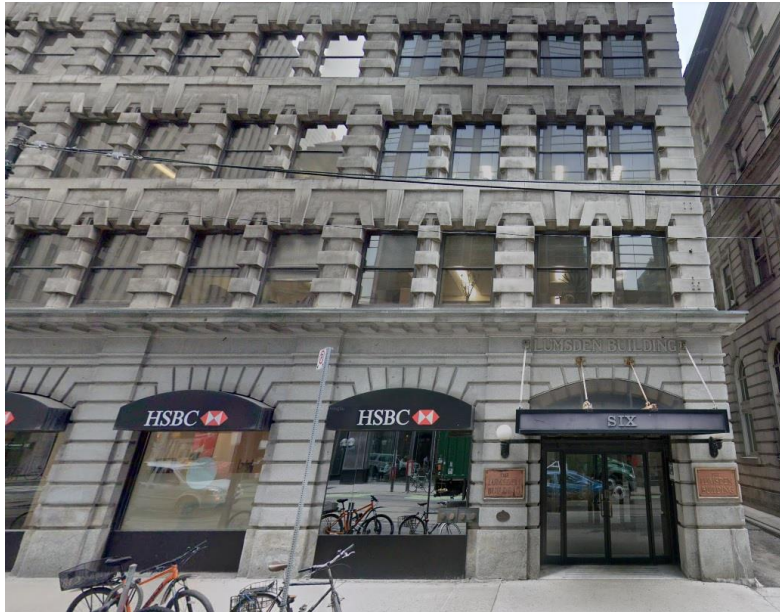
Atrium connecting the former National Electric Heating and New Method Laundry buildings which comprise 544 and 550 Queen Street East. Heritage Planning, 2022.

544 and 550 Queen Street East

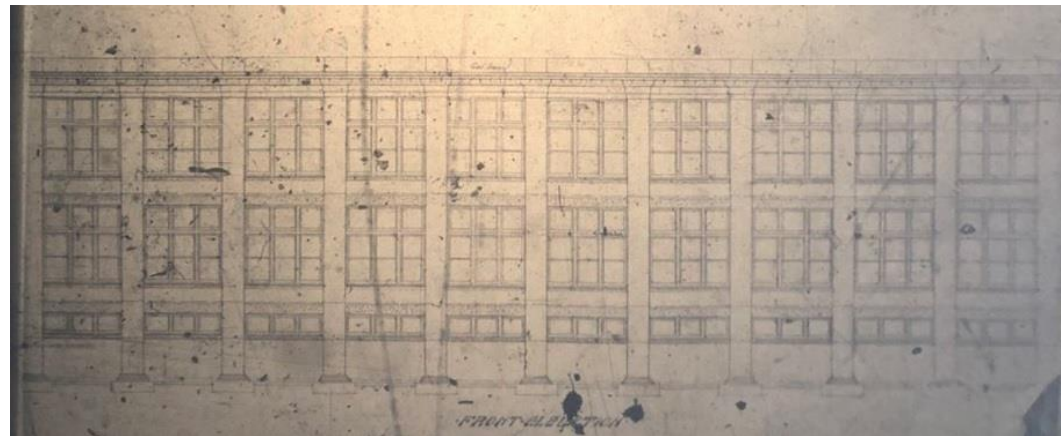
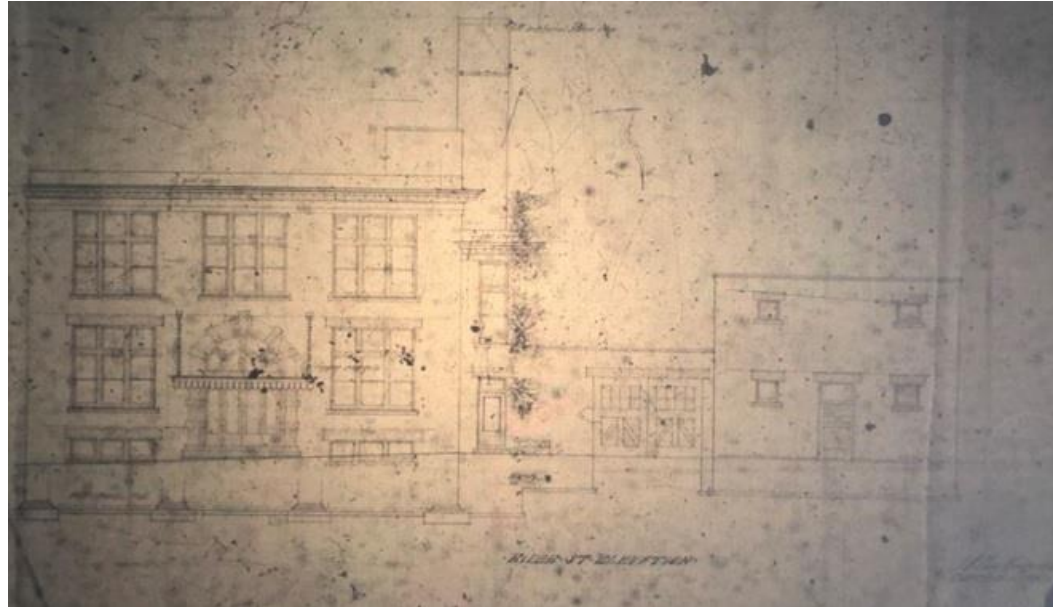


544 and 550 Queen Street East
at the northwest corner of
Queen and River Street.
Heritage Planning, 2022

544 and 550 Queen Street East

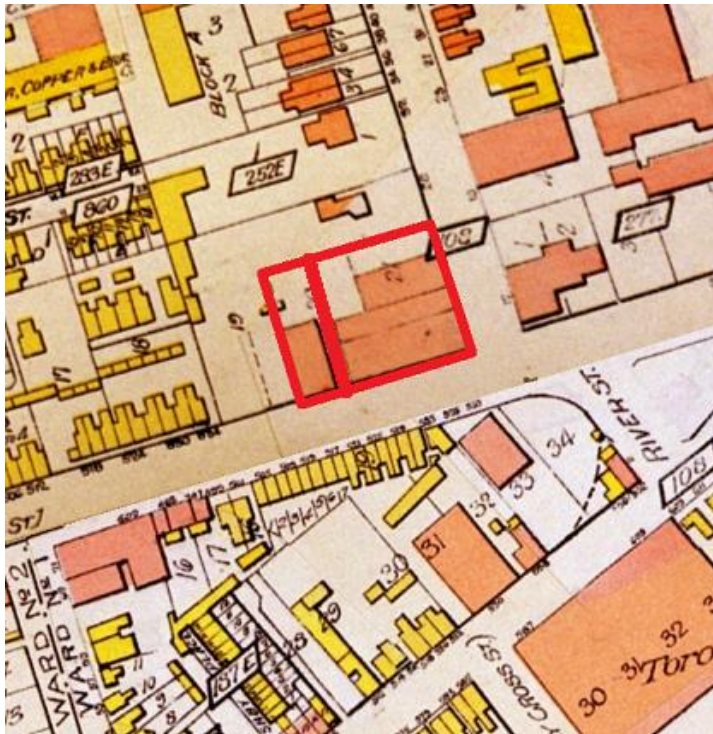


Street-level view of the south elevation and entryway into the Lumsden Building (1909) by J.A. MacKenzie at 2-6 Adelaide Street East. Note the significant use of precast concrete, voussiors, heavy dentilles, and a prominent portico roof suspended by four cables. Google Maps, 2018.



Architectural drawings of the New Method Laundry building (1910)
Top: front (River Street) elevation
Bottom: side (Queen East Street) elevation

544 and 550 Queen Street East



Goad's (1913) showing 544-548 Queen Street East and 2 River Street (550-554 Queen Street East) today listed as 550 Queen Street East (indicated in red).



Aerial Photo (1939) showing 544-548 Queen Street East and 2 River Street (550-554 Queen Street East) today listed as 550 Queen Street East (indicated in red).



Archival photo (1929-30) of the New Method Laundry building with its 1923-built third-storey addition and modified cornice (replaced by signage). City of Toronto Archives, Fonds 1488, Series 1230, Item 3575.

544 and 550 Queen Street East



Context view of 544 and 550 Queen Street East at the northwest corner of Queen and River Street. Heritage Planning, 2022