

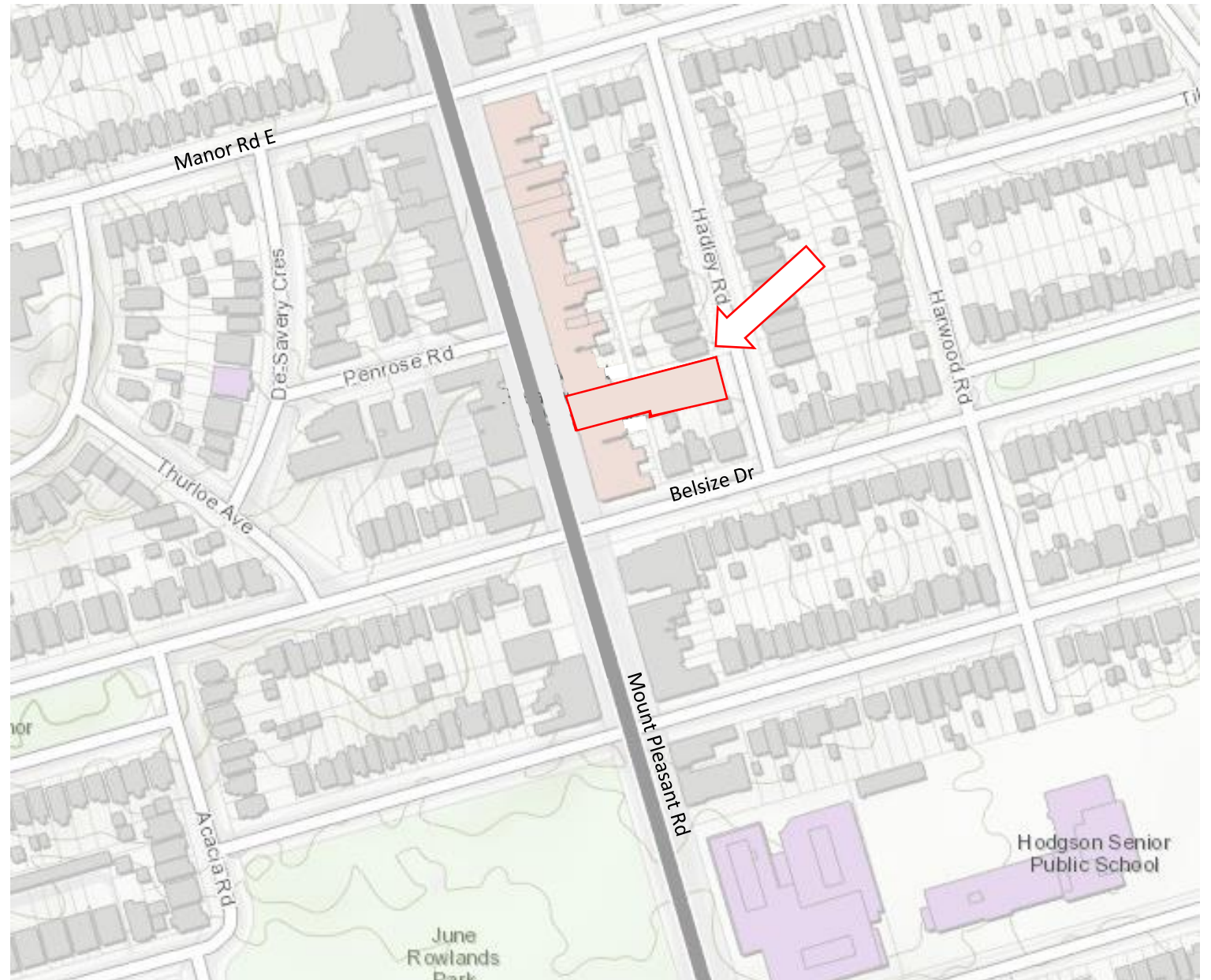


PB38.2

551 Mount Pleasant Road - Notice of Intention to Designate under Part IV, Section 29 of the Ontario Heritage Act

PB38.2
551 Mount Pleasant Road

This location map is for information purposes only; the exact boundaries of the property are not shown. The arrow marks the location of the site.



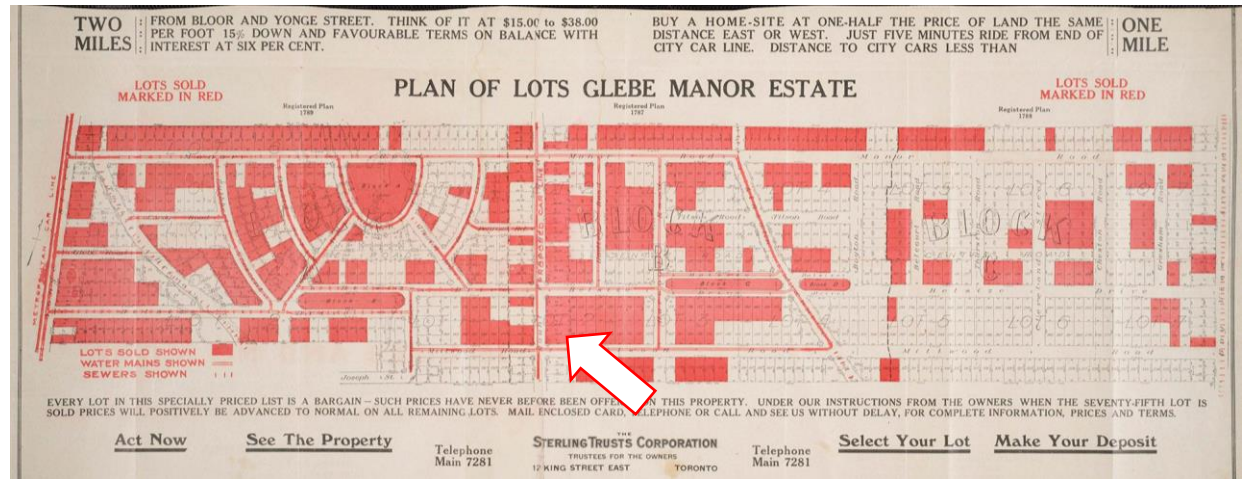
PB38.2
551 Mount Pleasant Road



Front (west) elevation (Heritage Planning, 2022)



1903 Goad's Atlas



1912 Plan of Lots of Glebe Manor Estate (Toronto Public Library)

PB38.2

551 Mount Pleasant Road



Regent Theatre, c.1927 (Regent Theatre Archives via ERA CHER)



Bedford Theatre, c.1928 (Archives of Ontario)

PB38.2

551 Mount Pleasant Road



Belsize Theatre, 1942 (Archives of Ontario)



Crest Theatre, 1964 (Toronto Star Collection via Toronto Public Library)

PB38.2

551 Mount Pleasant Road



The Madwoman of Chailot (1961): Charmion King, Barbara Chilcott, Bruno Gerussi, Barbara Hamilton, Kate Reid (Photographer Robert Ragsdale)

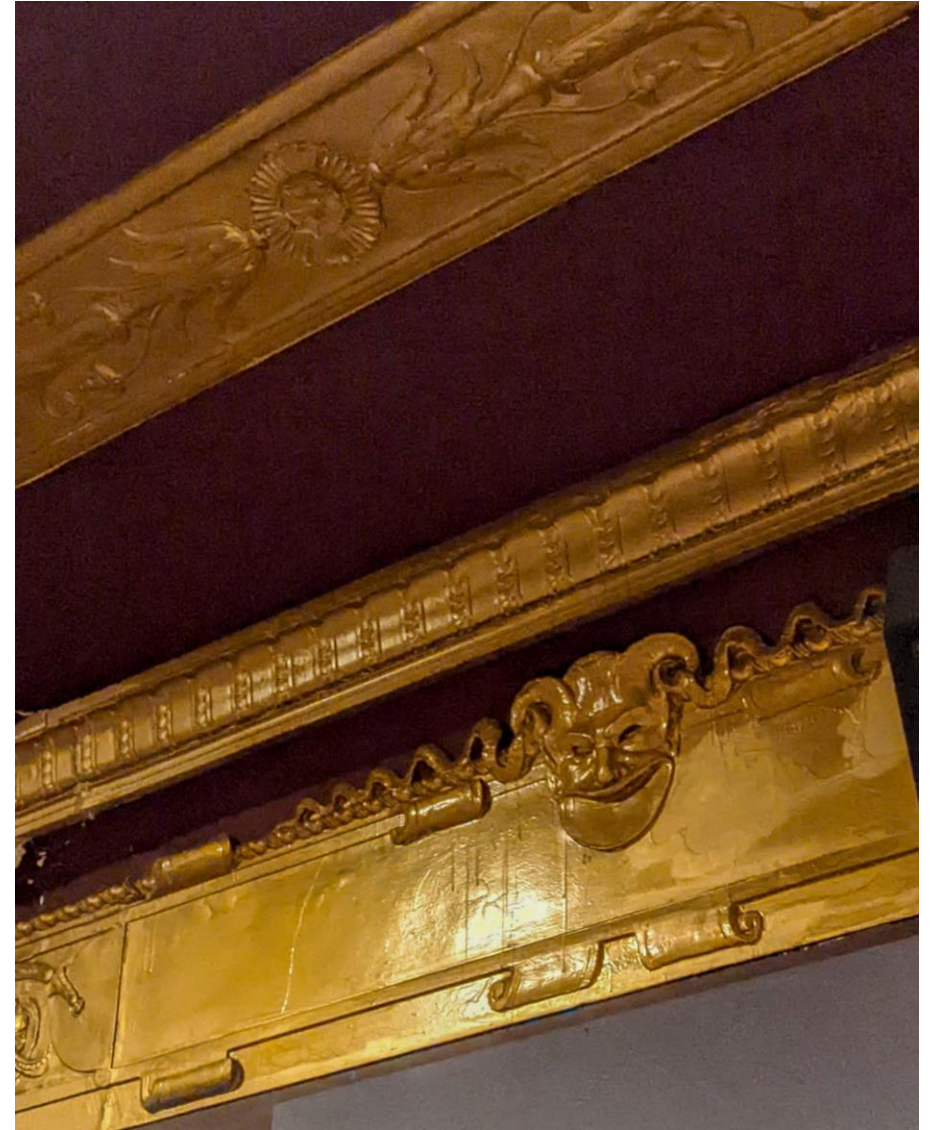


Changing the marquee - November 1964 (Photographer John McNeill, Archives of Ontario)

PB38.2
551 Mount Pleasant Road



Detail of auditorium of Belsize Theatre, 1942 (Archives of Ontario)



Interior detail (Heritage Planning, 2022)

PB38.2
551 Mount Pleasant Road



Partial lobby ceiling previously concealed (Heritage Planning, 2022)



Belsize Theatre, c.1930 (Archives of Ontario)



Bedford Theatre, c.1928 (Archives of Ontario)

PB38.2
551 Mount Pleasant Road



Mount Pleasant Road at Belsize Drive, 1933
(City of Toronto Archives)



Mount Pleasant Road, north of Belsize Drive (Heritage Planning, 2022)