

Final Report

Prepared by Hemson for the City of Toronto

Future of Toronto Employment Areas and the Office Market

Appendix 1

April 7th 2022



In association with:

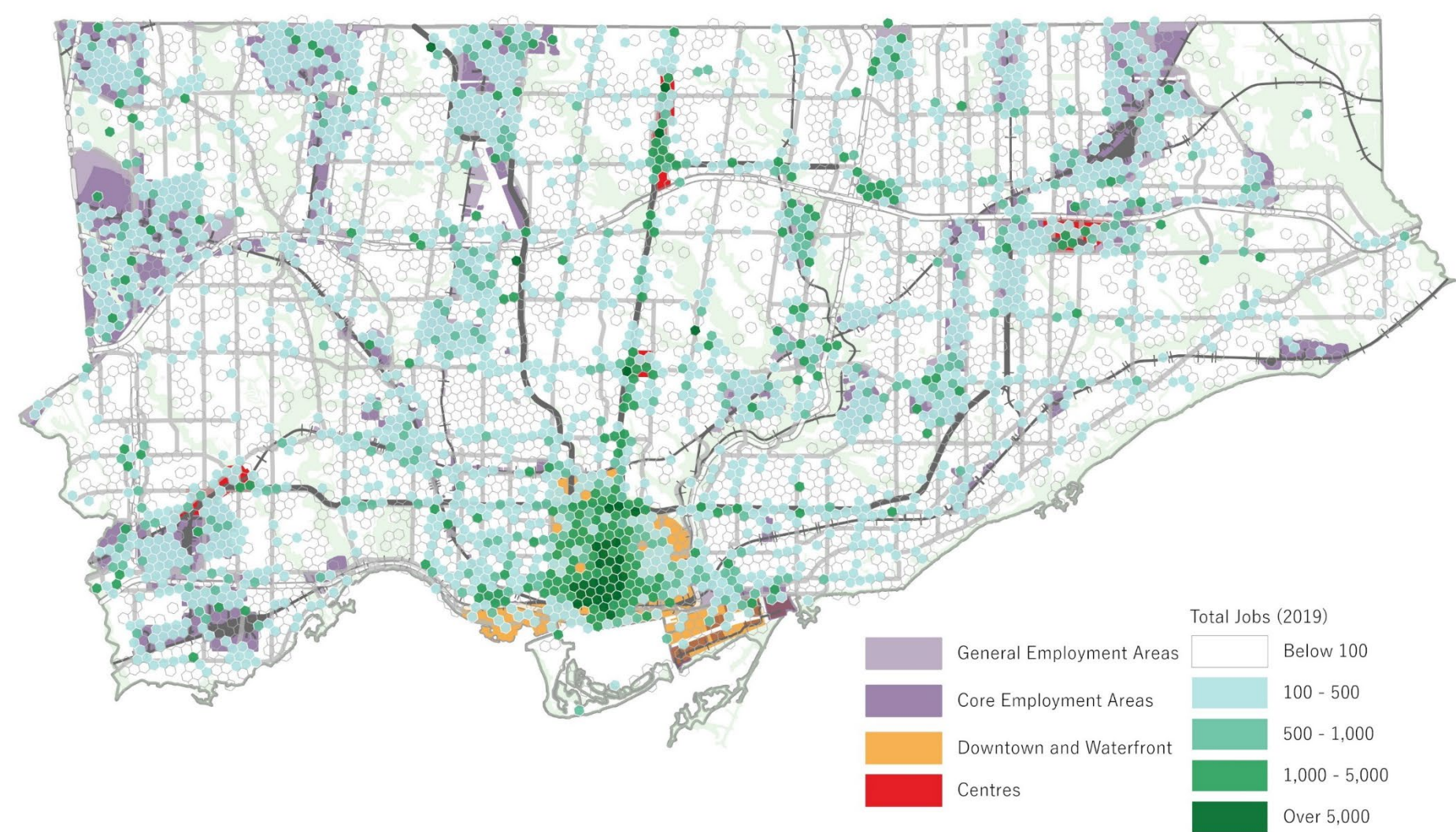


1000 – 30 St. Patrick Street, Toronto, ON M5T 3A3
416 593 5090 | hemson@hemson.com | www.hemson.com

APPENDIX 1

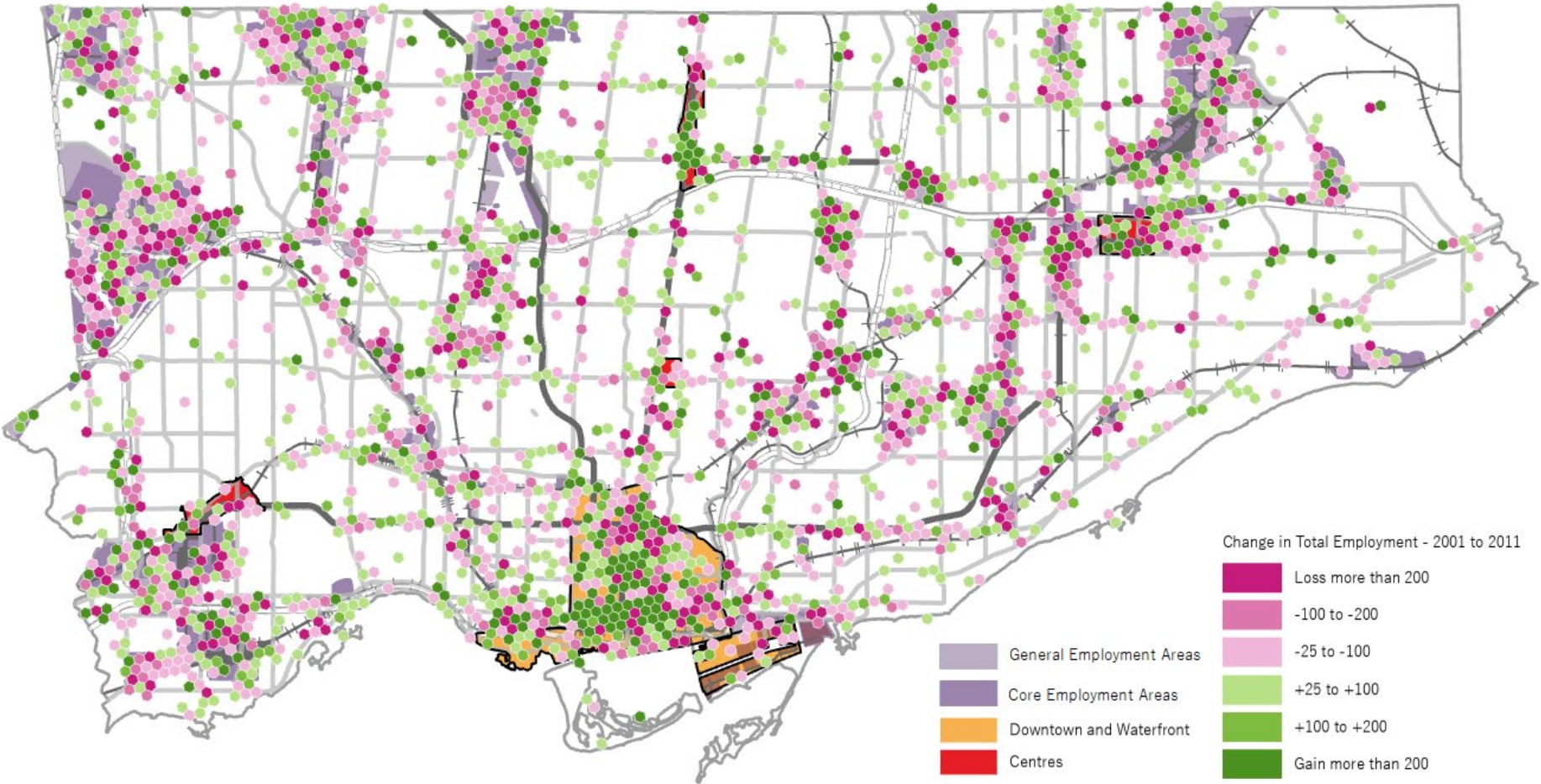
MAPPING OF EMPLOYMENT DISTRIBUTION AND CHANGE OVER TIME BY LAND USE CATEGORY

Appendix 1-1: Distribution of Total Employment, 2019



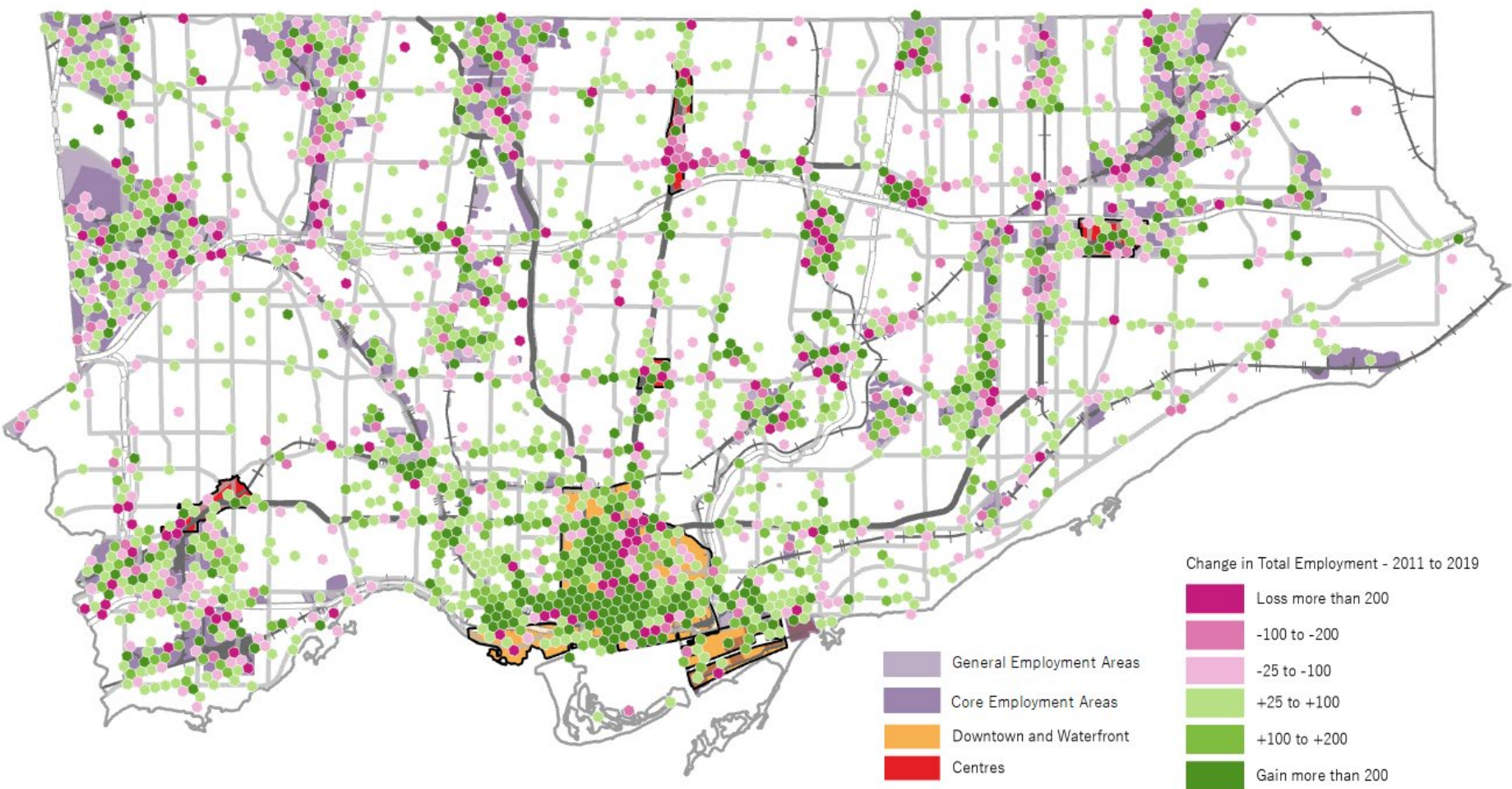
Source: Hemson Consulting, using data from the City of Toronto Employment Survey

Appendix 1-2: Change in Total Employment, 2001-2011



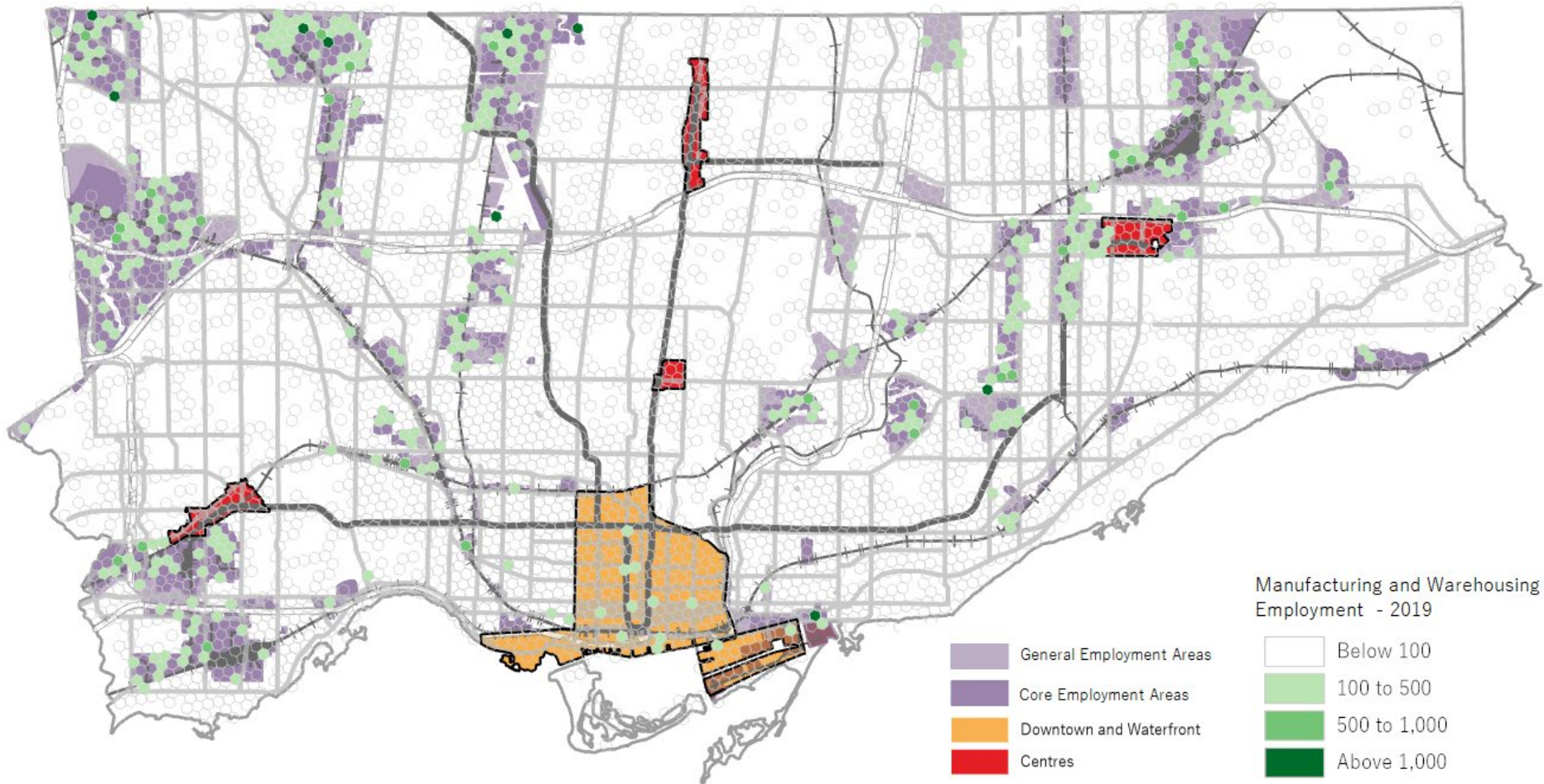
Source: Hemson Consulting, using data from the City of Toronto Employment Survey

Appendix 1-3: Change in Total Employment, 2011-2019



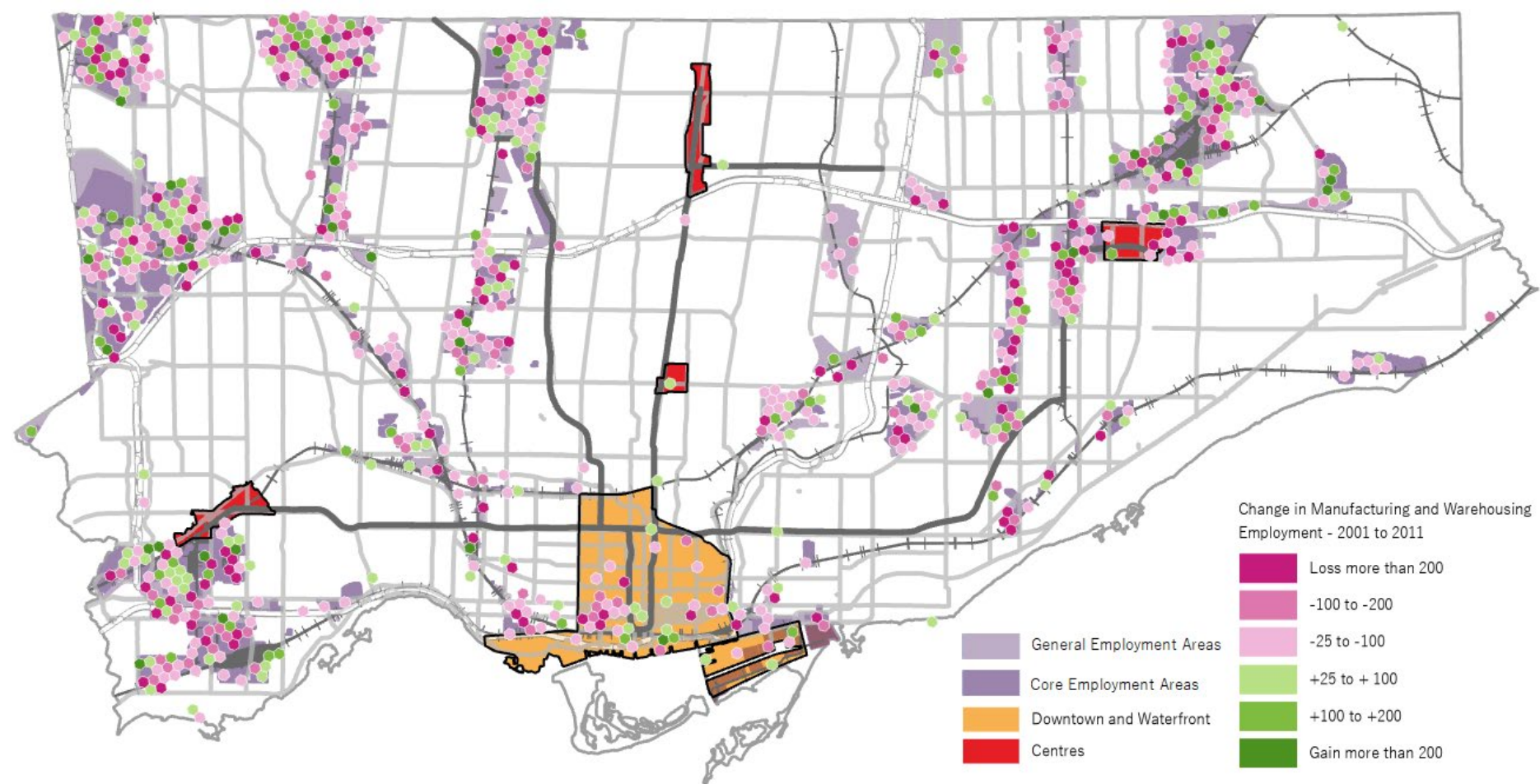
Source: Hemson Consulting, using data from the City of Toronto Employment Survey

Appendix 1-4: Distribution of Manufacturing & Warehouse Employment, 2019



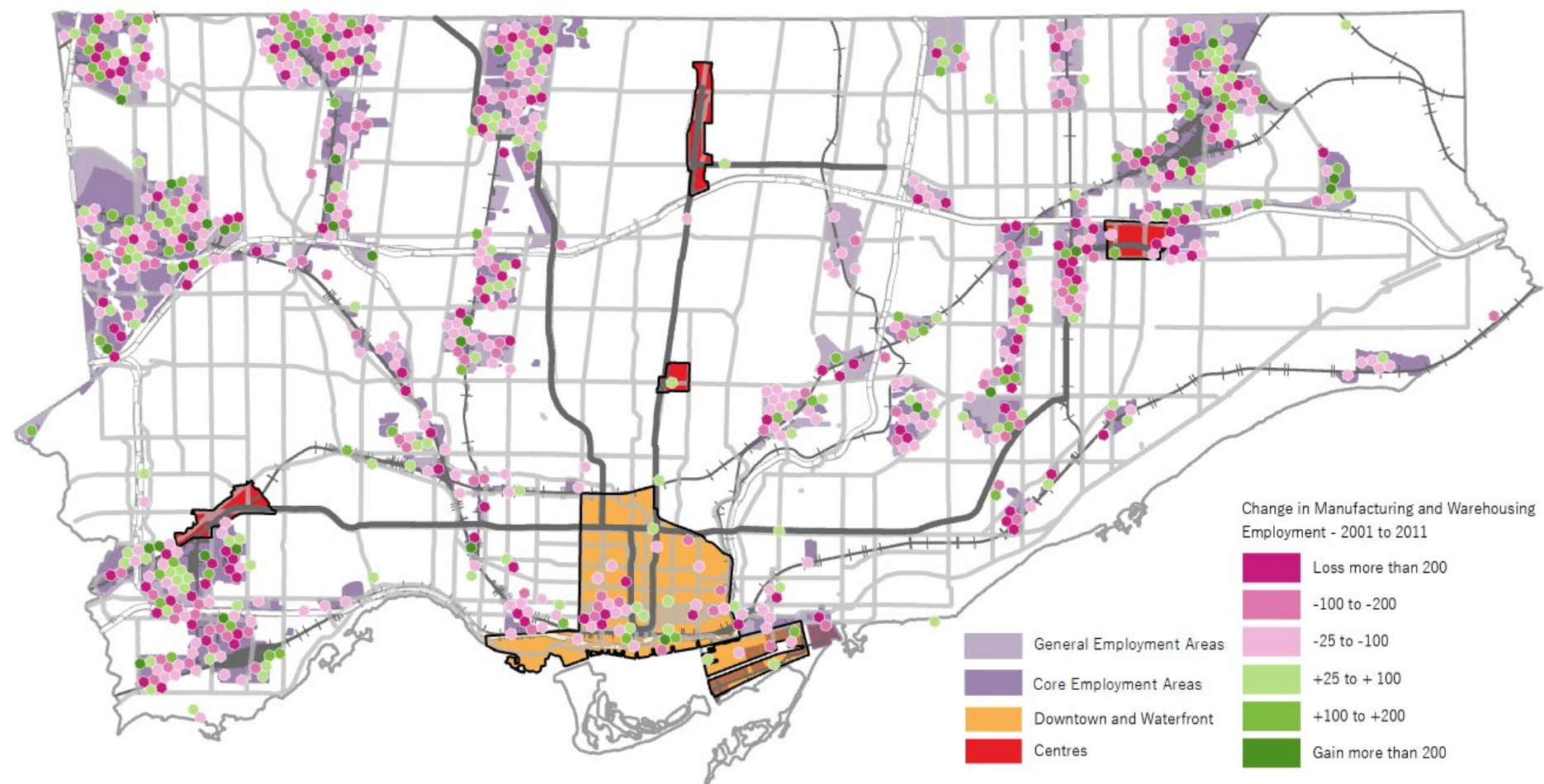
Source: Hemson Consulting, City of Toronto Employment Survey Land Use Activity Codes

Appendix 1-5: Change in Manufacturing & Warehouse Employment, 2001-2011



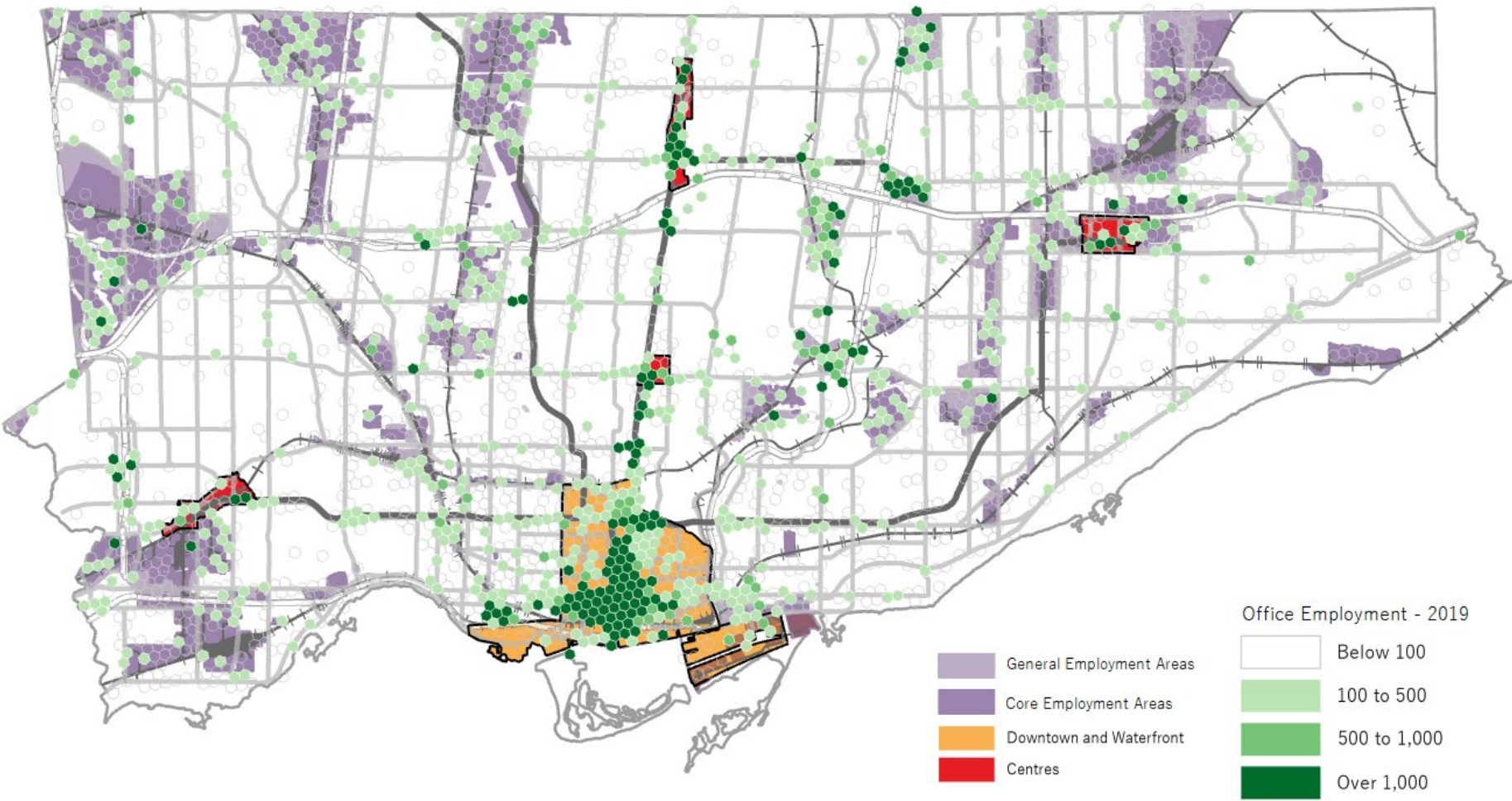
Source: Hemson Consulting, City of Toronto Employment Survey Land Use Activity Codes

Appendix 1-6: Change in Manufacturing & Warehouse Employment, 2011-2019



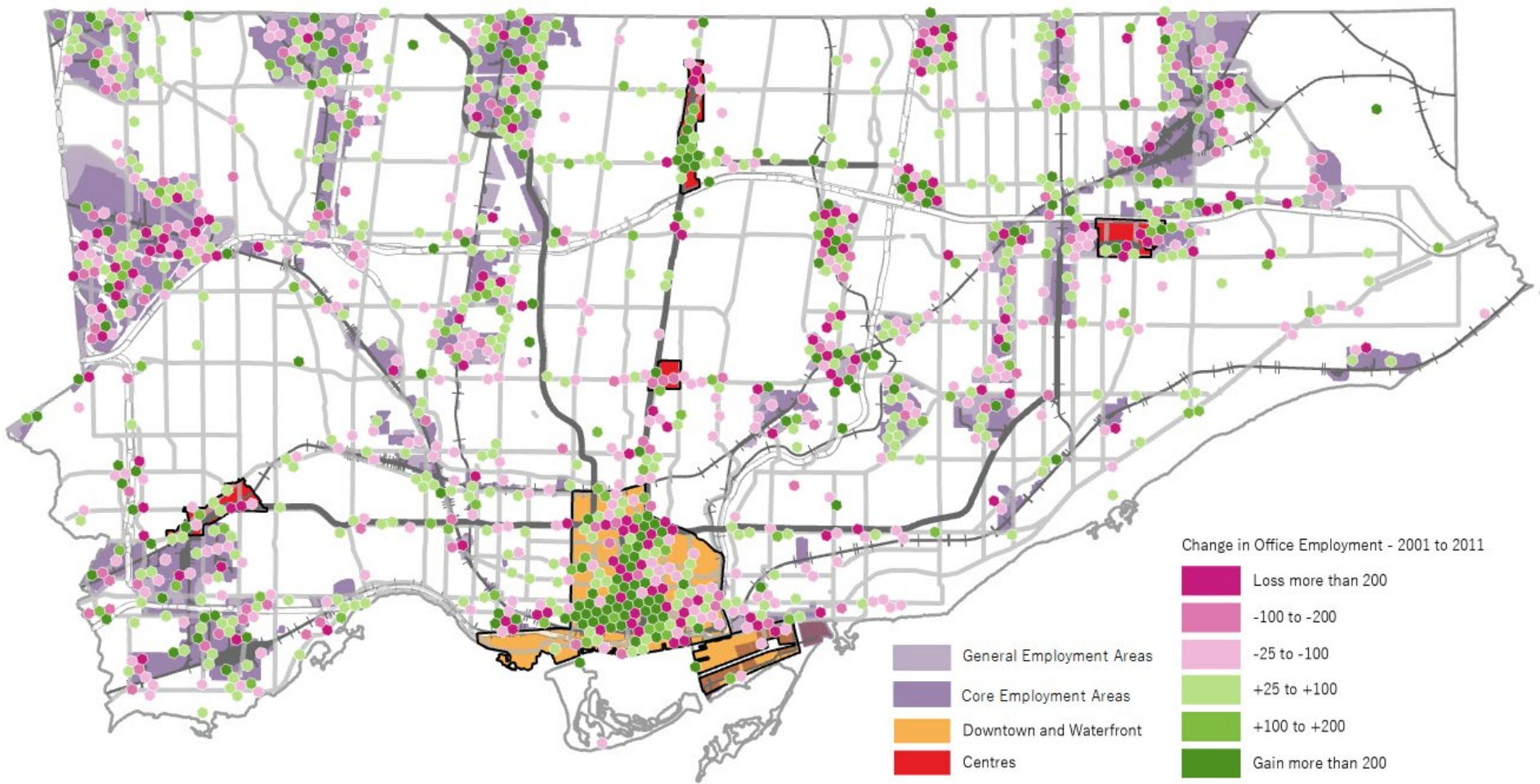
Source: Hemson Consulting, City of Toronto Employment Survey Land Use Activity Codes

Appendix 1-7: Distribution of Office Employment, 2019



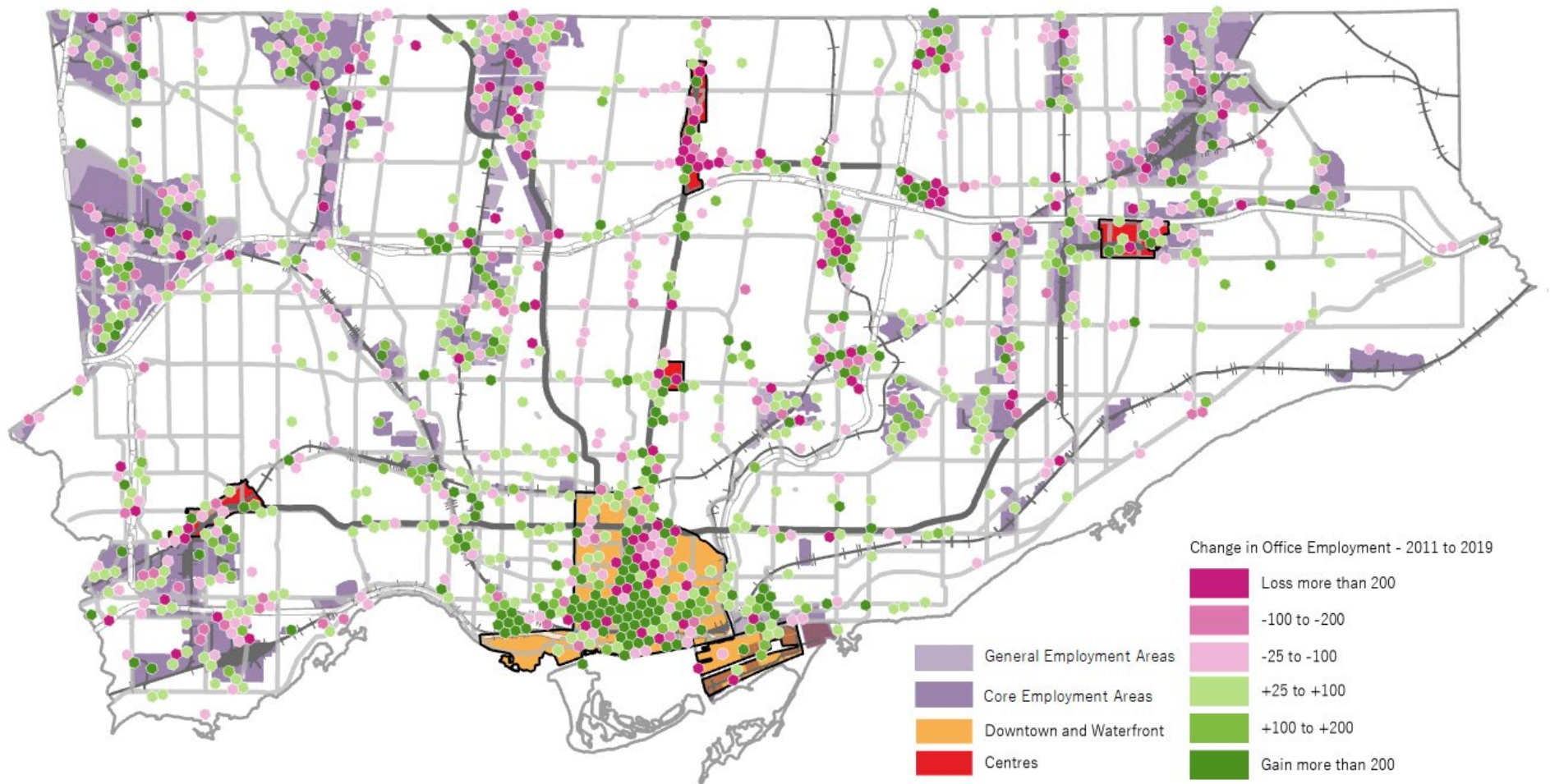
Source: Hemson Consulting, City of Toronto Employment Survey Land Use Activity Codes

Appendix 1-8: Change in Office Employment, 2001-2011



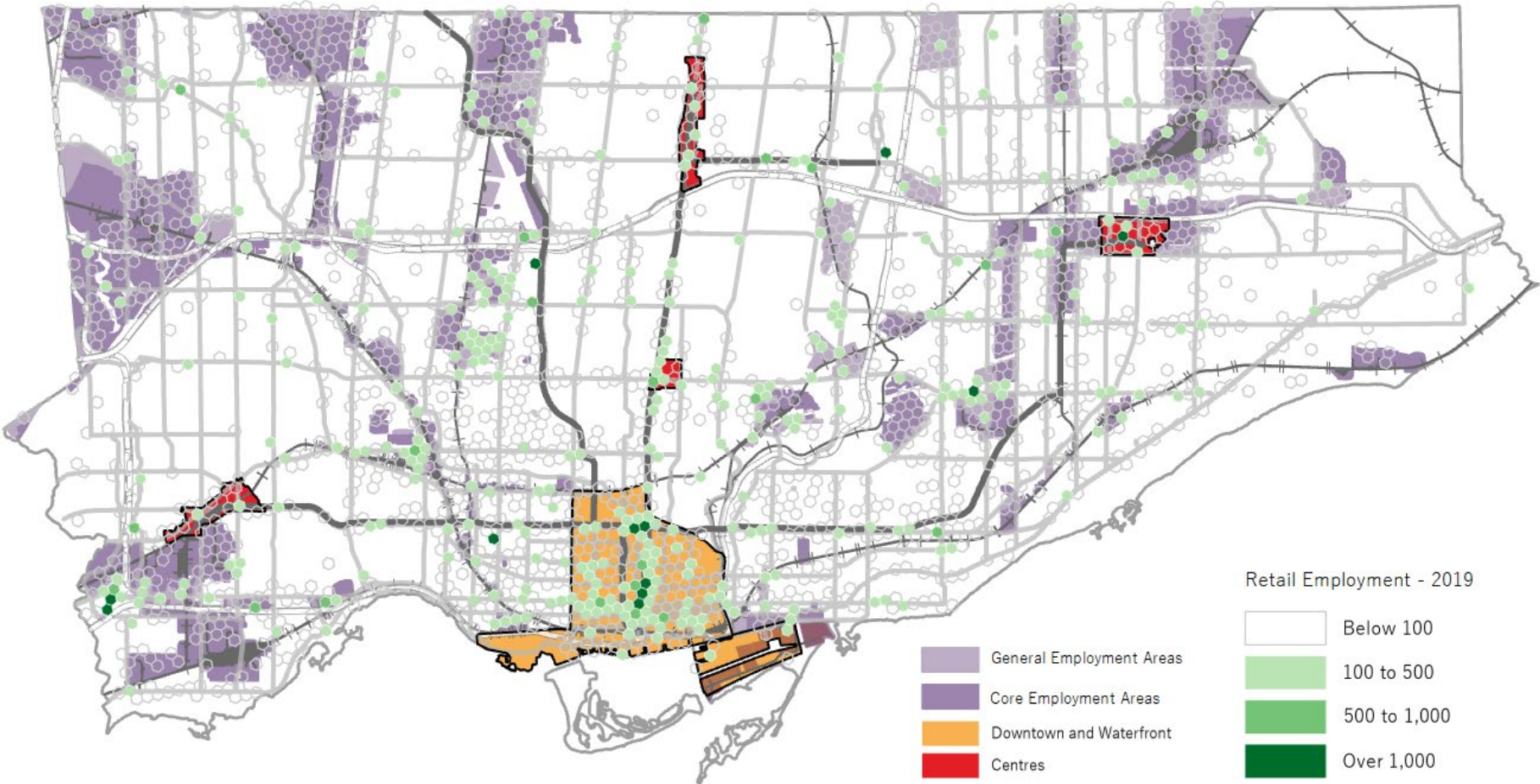
Source: Hemson Consulting, City of Toronto Employment Survey Land Use Activity Codes

Appendix 1-9: Change in Office Employment, 2011-2019



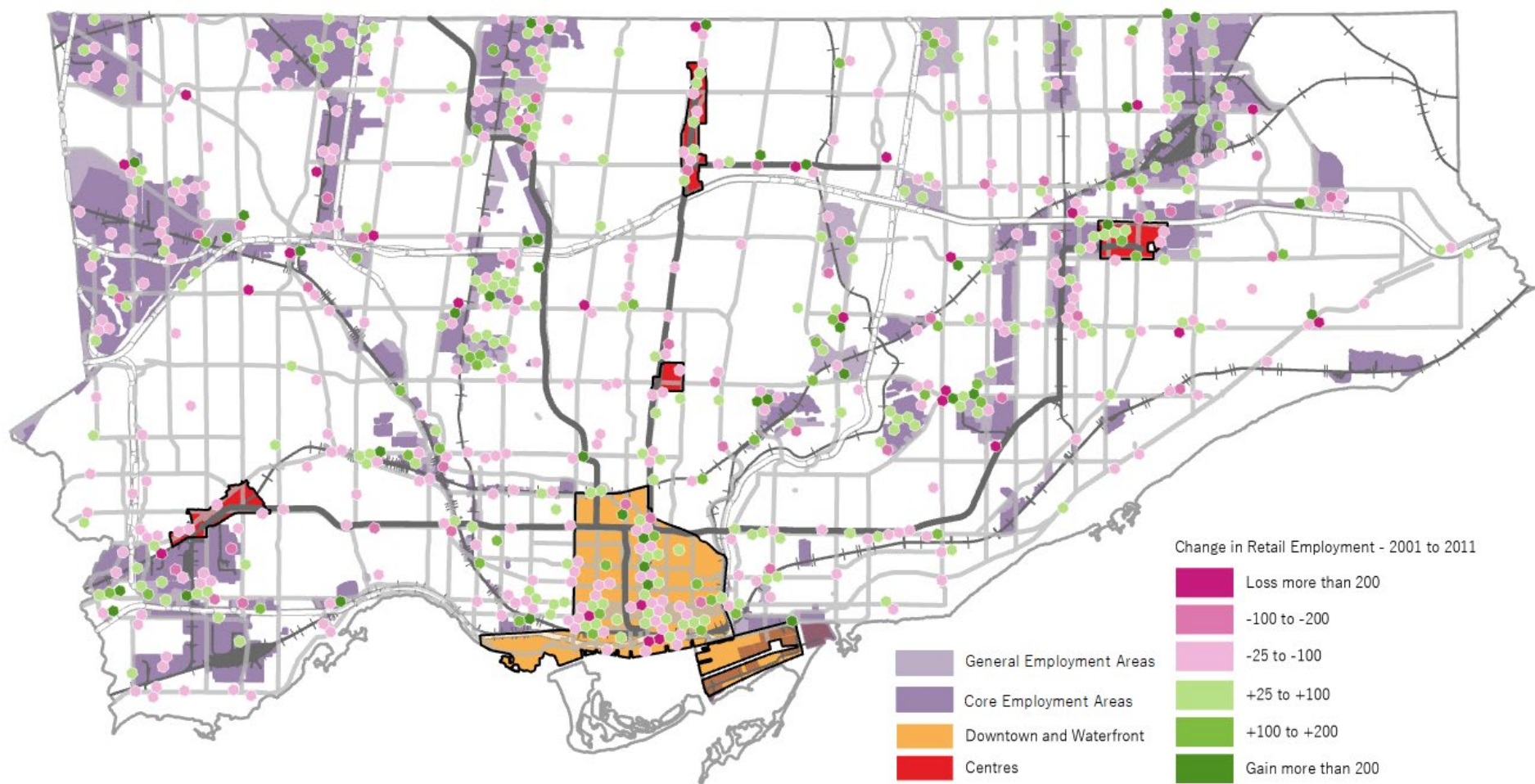
Source: Hemson Consulting, City of Toronto Employment Survey Land Use Activity Codes

Appendix 1-10: Distribution of Retail Employment, 2019



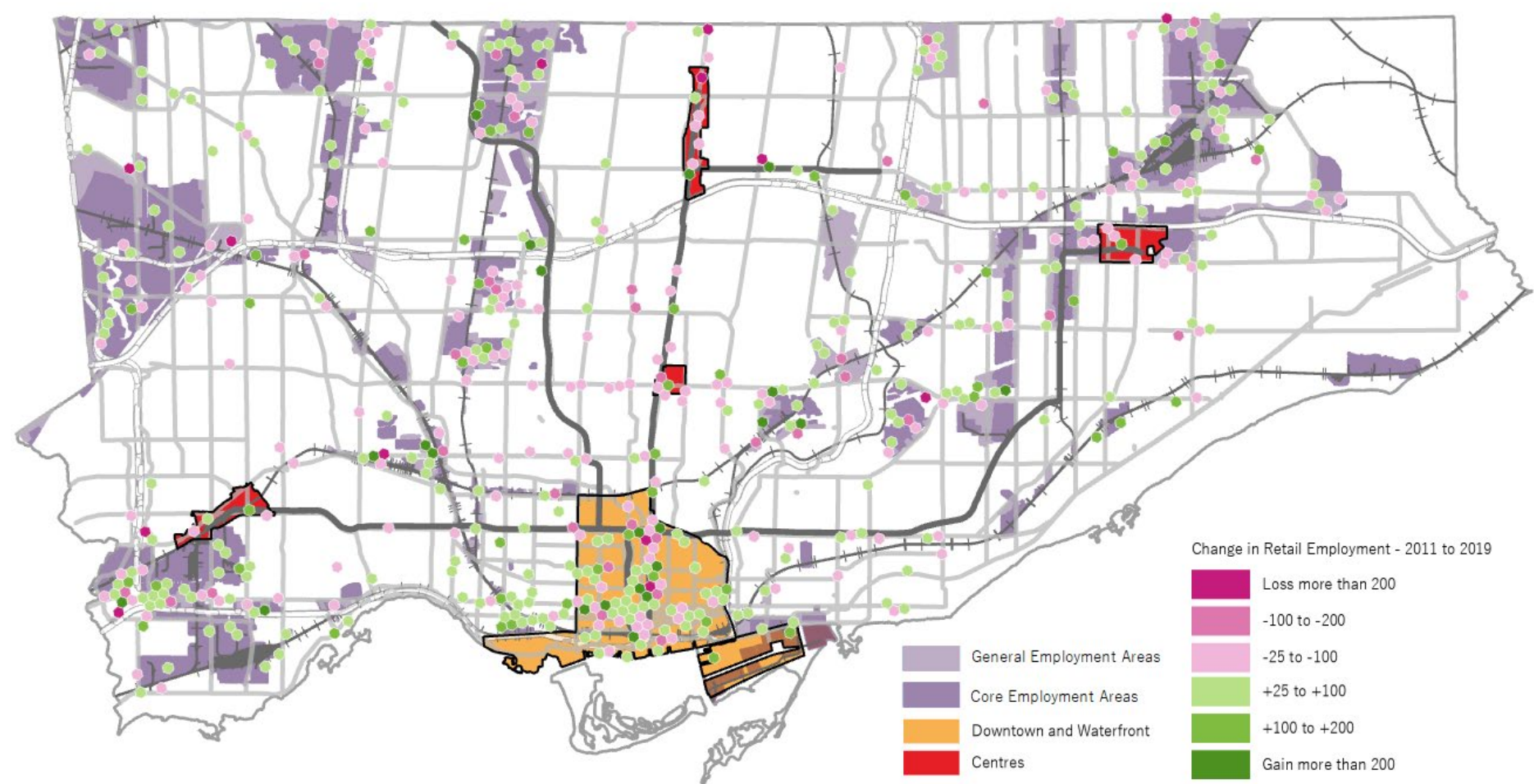
Source: Hemson Consulting, City of Toronto Employment Survey Land Use Activity Codes

Appendix 1-11: Change in Retail Employment, 2001-2011



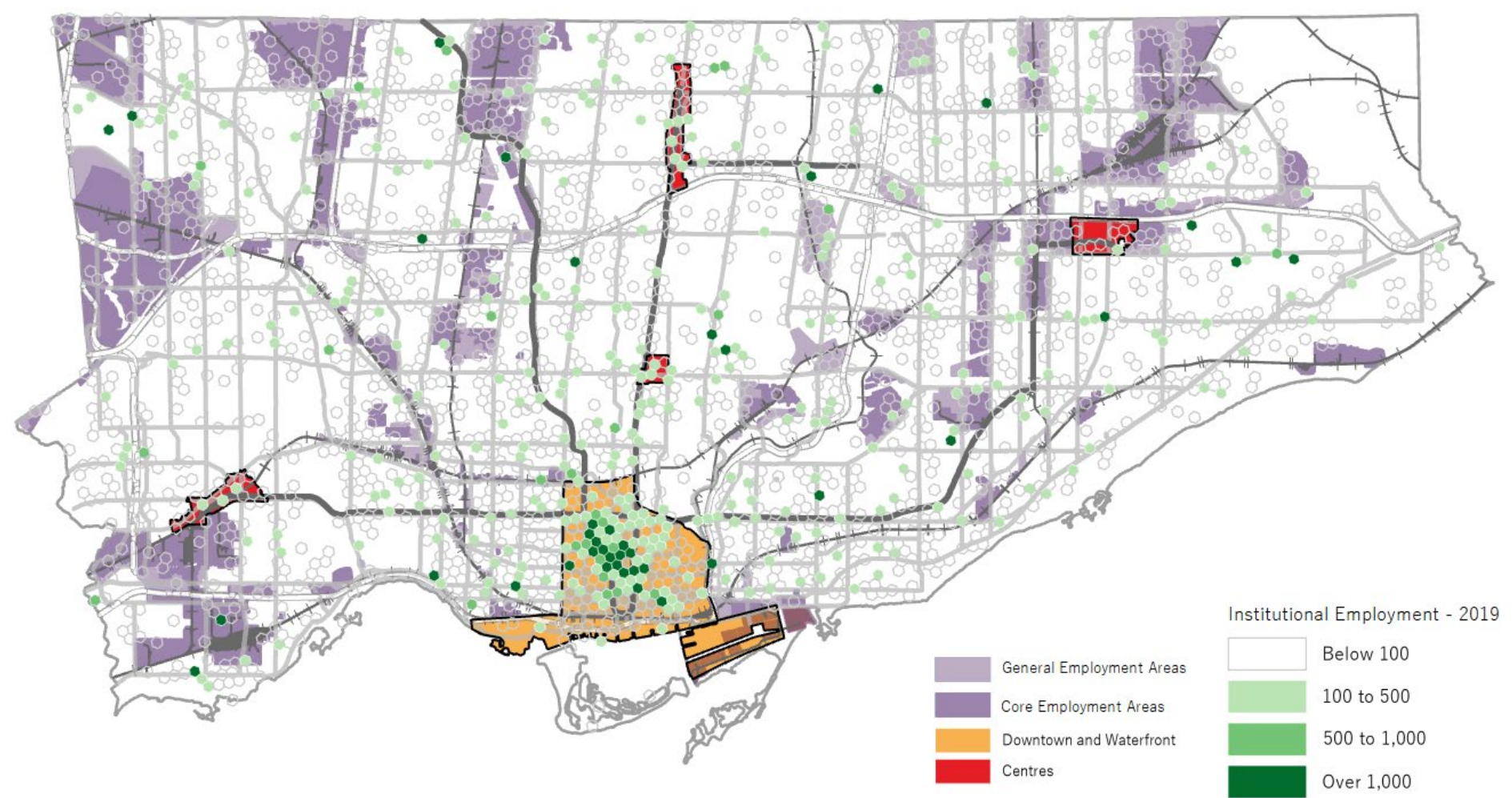
Source: Hemson Consulting, City of Toronto Employment Survey Land Use Activity Codes

Appendix 1-12: Change in Retail Employment, 2011-2019



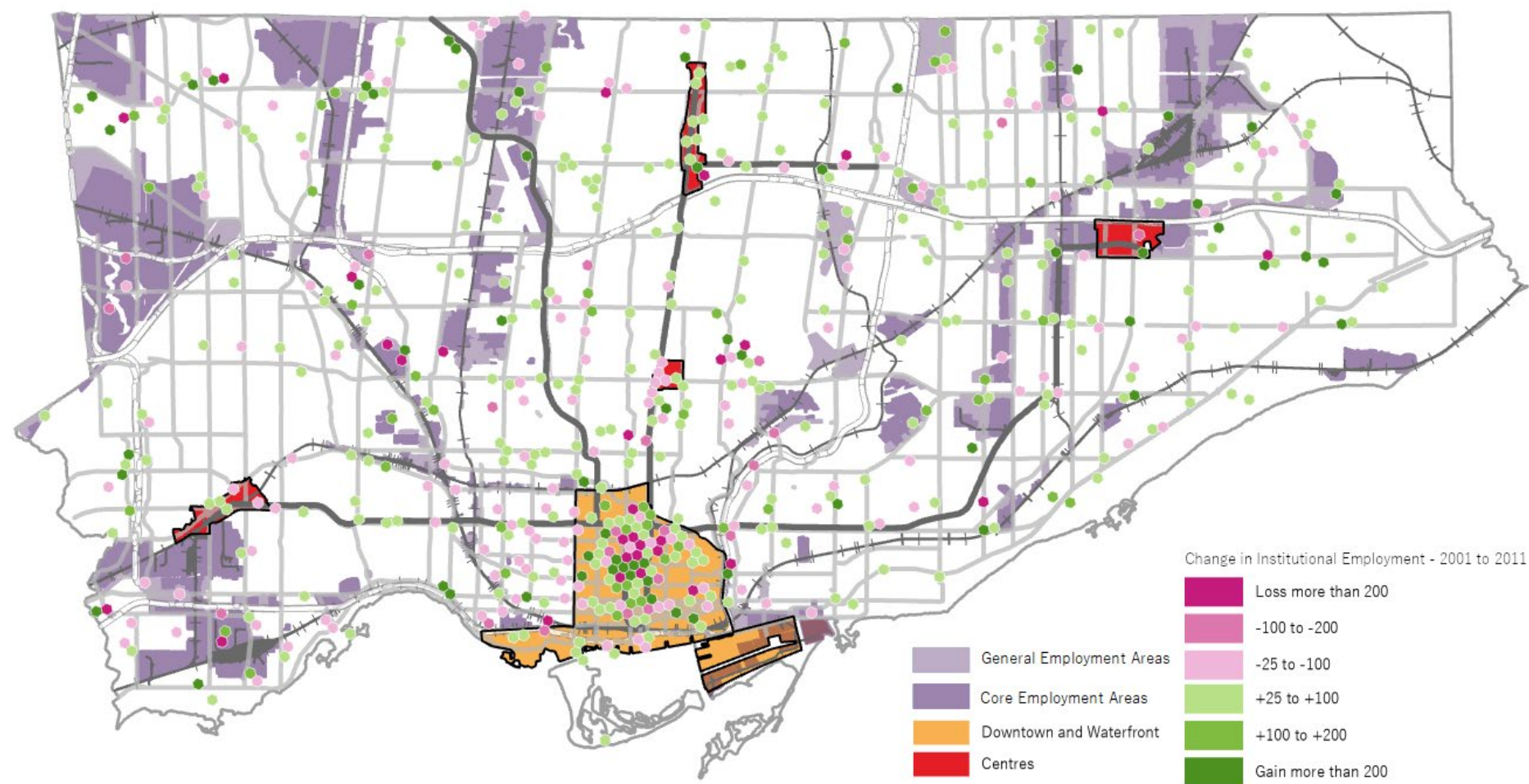
Source: Hemson Consulting, City of Toronto Employment Survey Land Use Activity Codes

Appendix 1-13: Distribution of Institutional Employment, 2019



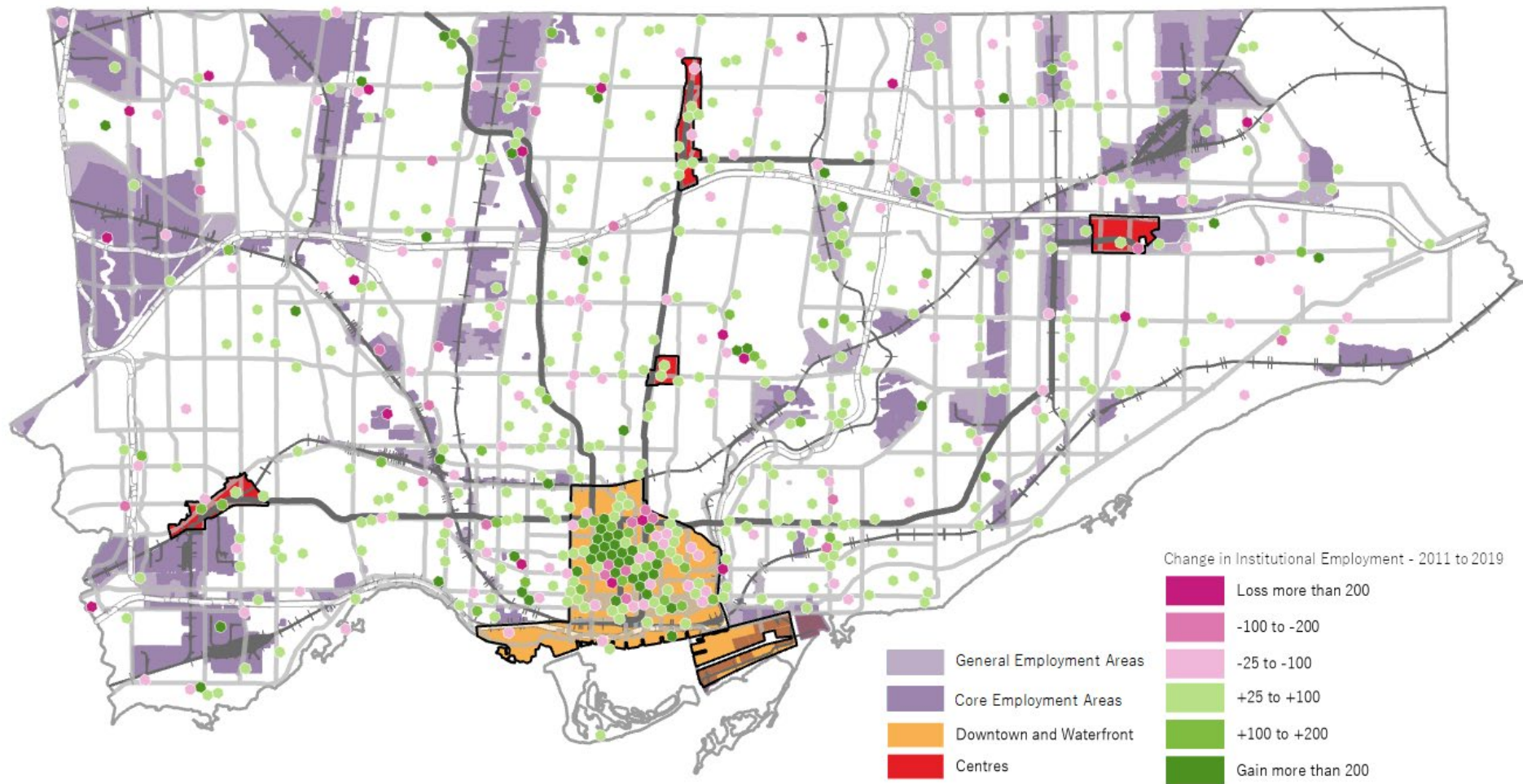
Source: Hemson Consulting, City of Toronto Employment Survey Land Use Activity Codes

Appendix 1-14: Change in Institutional Employment, 2001-2011



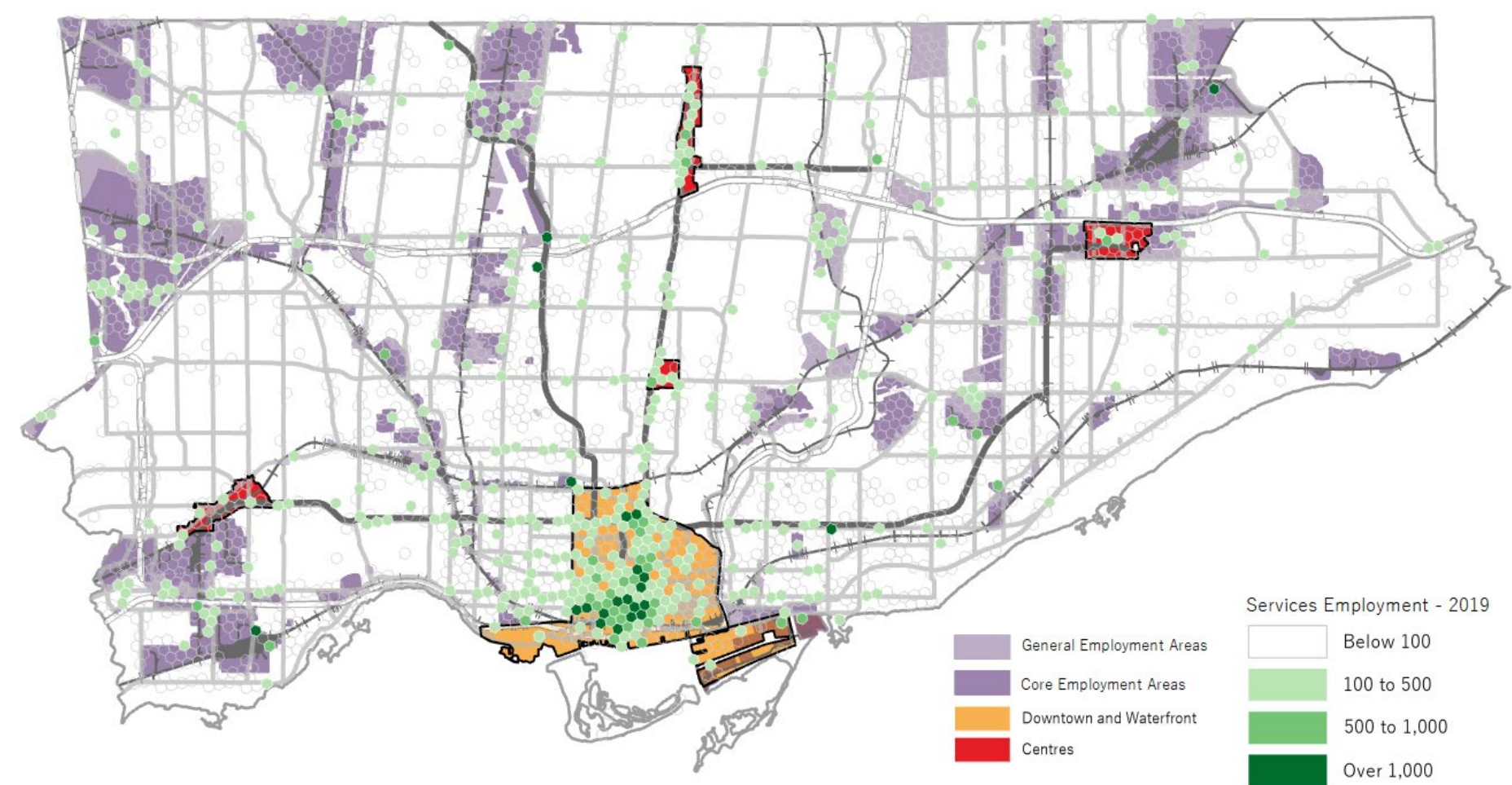
Source: Hemson Consulting, City of Toronto Employment Survey Land Use Activity Codes

Appendix 1-15: Change in Institutional Employment, 2011-2019



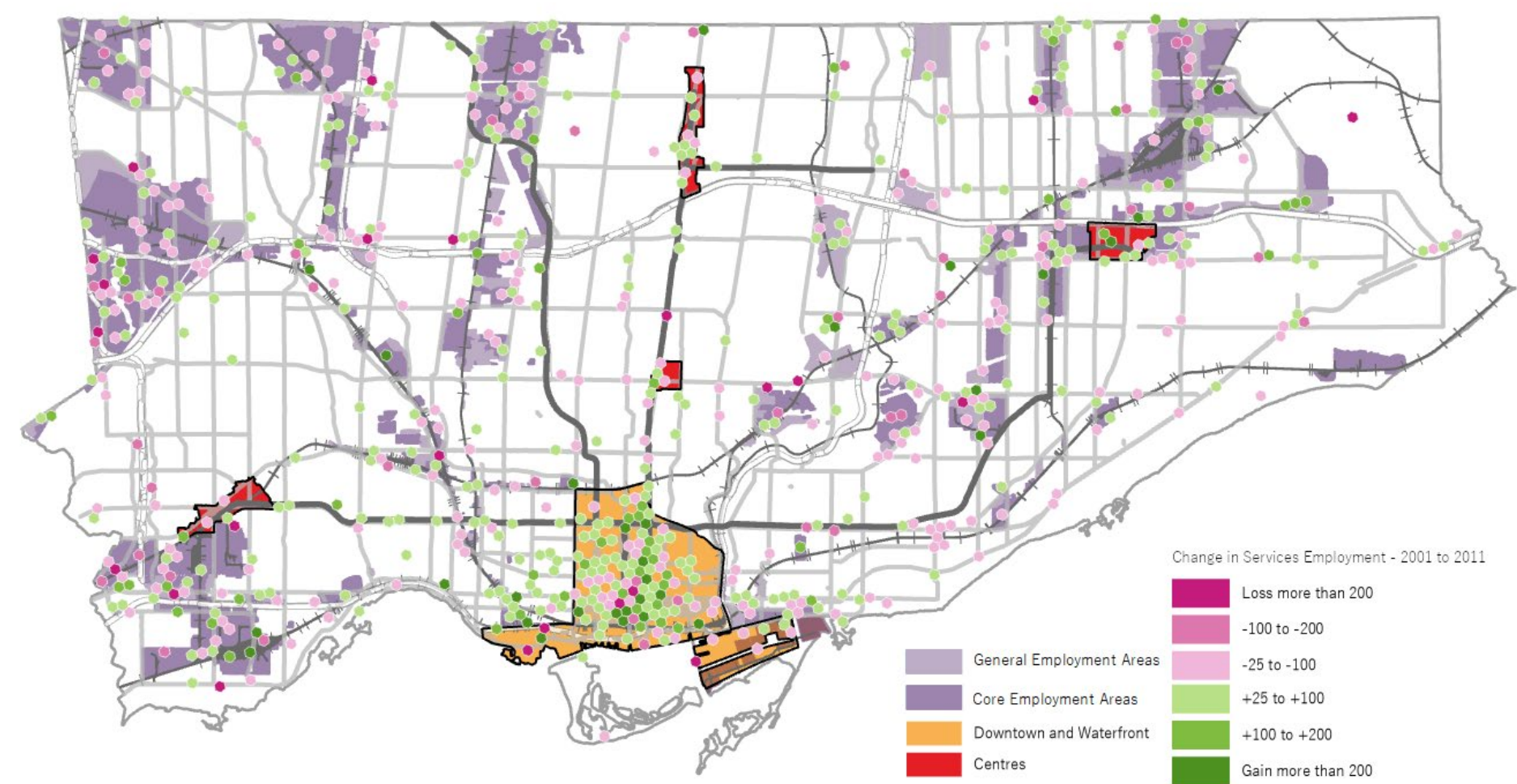
Source: Hemson Consulting, City of Toronto Employment Survey Land Use Activity Codes

Appendix 1-16: Distribution of Service Employment, 2019



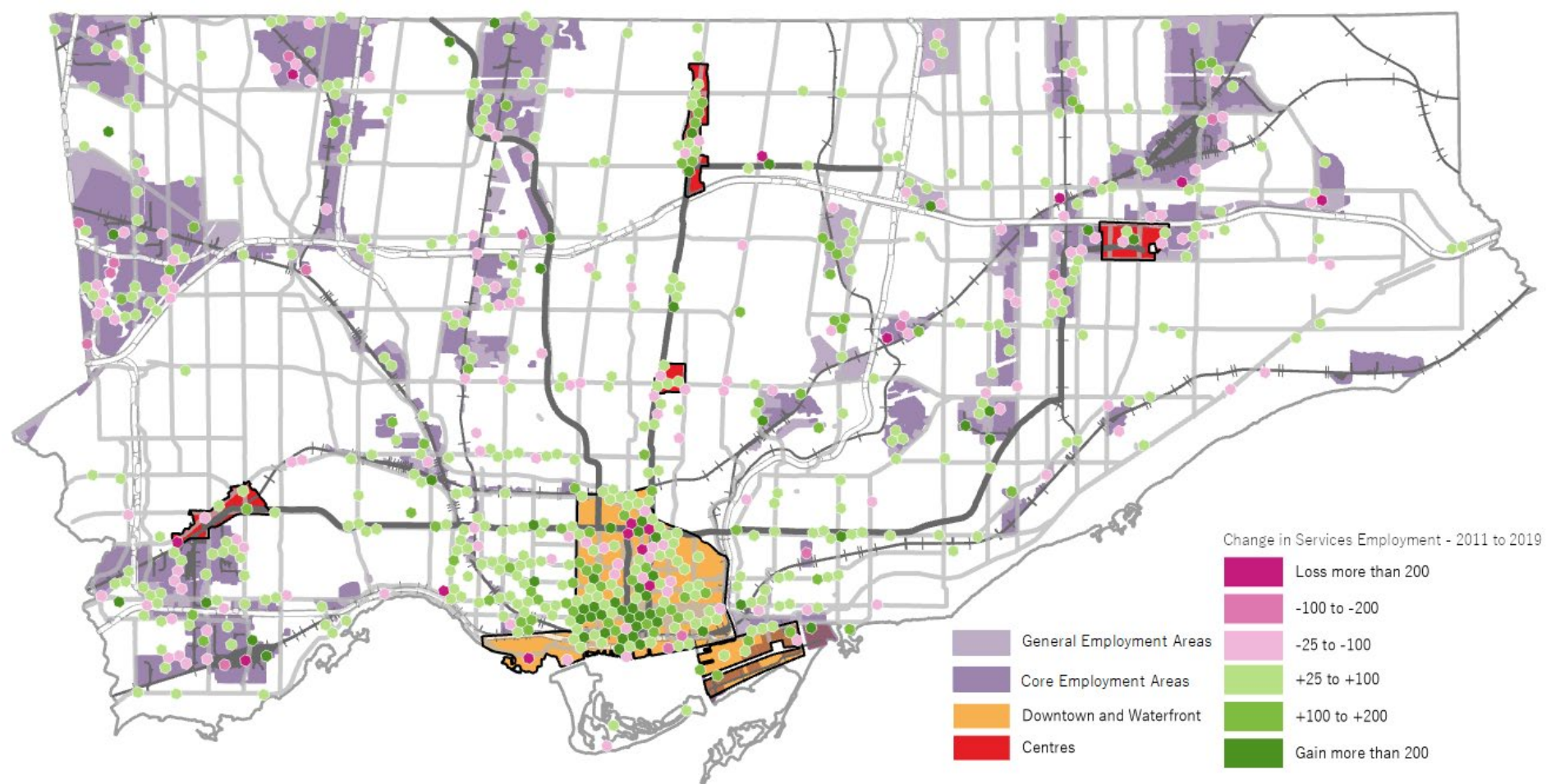
Source: Hemson Consulting, City of Toronto Employment Survey Land Use Activity Codes

Appendix 1-17: Change in Service Employment, 2001-2011



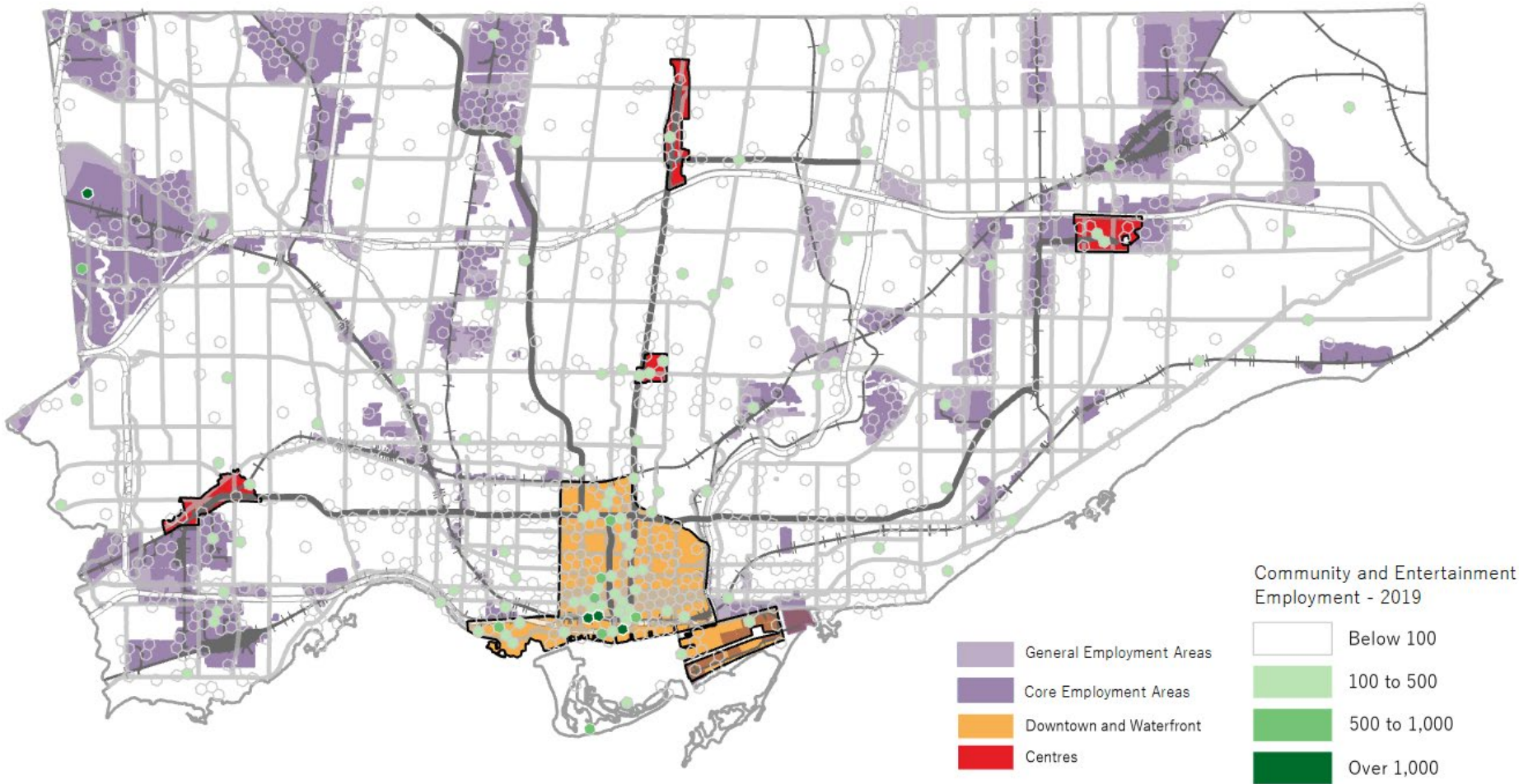
Source: Hemson Consulting, City of Toronto Employment Survey Land Use Activity Codes

Appendix 1-18: Change in Service Employment, 2011-2019



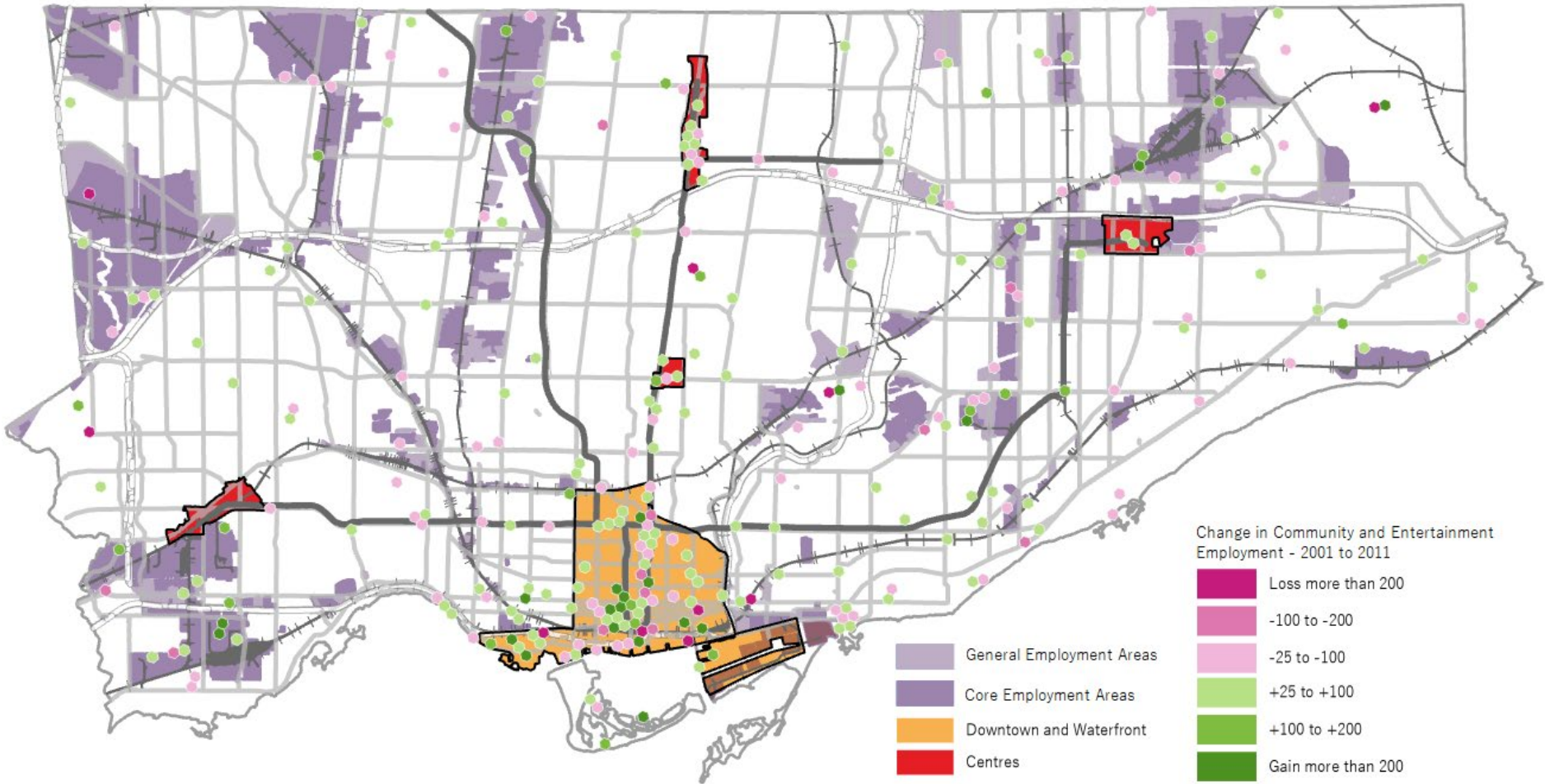
Source: Hemson Consulting, City of Toronto Employment Survey Land Use Activity Codes

Appendix 1-19: Distribution of Community and Entertainment Employment, 2019



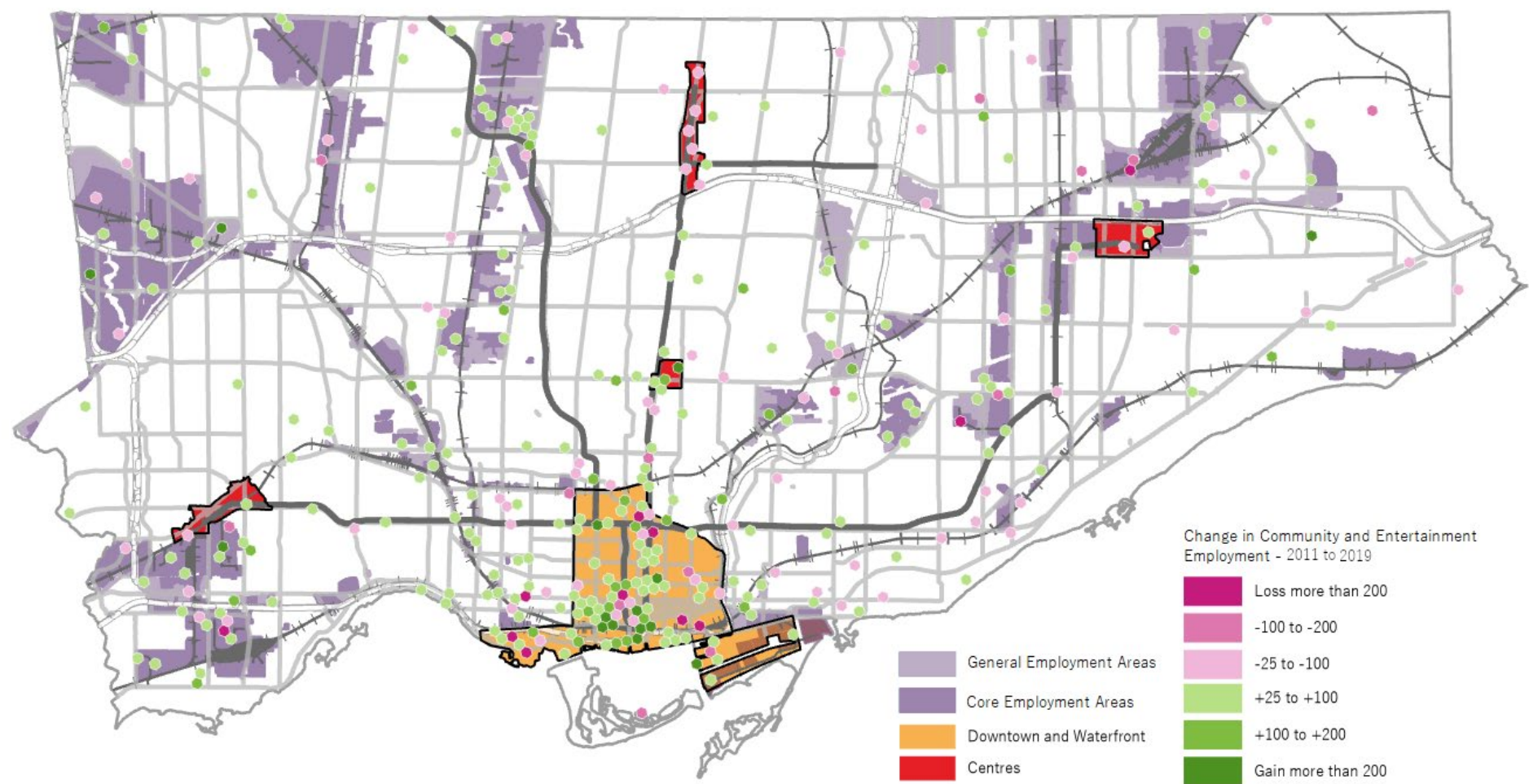
Source: Hemson Consulting, City of Toronto Employment Survey Land Use Activity Codes

Appendix 1-20: Change in Community and Entertainment Employment, 2001-2011



Source: Hemson Consulting, City of Toronto Employment Survey Land Use Activity Codes

Appendix 1-21: Change in Community and Entertainment Employment, 2011-2019



Source: Hemson Consulting, City of Toronto Employment Survey Land Use Activity Codes