

Pay-and-Display Parking - O'Connor Drive

Date: June 13, 2022

To: Toronto and East York Community Council

From: Director, Traffic Management, Transportation Services

Wards: Ward 19, Beaches-East York

SUMMARY

As the Toronto Transit Commission (TTC) operates a transit service on O'Connor Drive, City Council approval of this report is required.

Transportation Services is requesting approval for the installation of on-street paid parking on O'Connor Drive, between Garden Crescent and Yardley Avenue. This request is to help offset the temporary loss of on-street paid parking in the St. Clair Avenue East and O'Connor Drive area due to the City's Engineering and Construction Services capital work tied with the Basement Flooding Protection Program. Transportation Services and Toronto Parking Authority (TPA) staff reviewed streets near St. Clair Avenue East and O'Connor Drive to convert locations with daytime time limit parking, overnight permit parking and no parking regulations, to on-street paid parking.

A separate report, titled "Pay-and-Display Parking - Garden Crescent and Dohme Avenue" outlines the recommended parking amendments for streets without TTC service.

RECOMMENDATIONS

The Director, Traffic Management, Transportation Services recommends that:

1. City Council authorize the amendments to parking regulations required to establish new on-street paid parking locations, as set out in Attachments 2 and 3, to the report "Pay-and-Display Parking - O'Connor Drive", dated June 13, 2022 from the Director, Traffic Management, Transportation Services.

FINANCIAL IMPACT

All costs associated with the necessary signage changes are included within the Transportation Services 2022 Operating Budget.

All costs associated with the installation of parking machines will be assumed by the TPA. These recommendations, if fully implemented, are projected to generate an increase in annual gross revenue of up to \$9,500 from the on-street paid parking program.

DECISION HISTORY

This report addresses a new initiative.

COMMENTS

Engineering and Construction Services' construction of the Basement Flooding Protection Program near St. Clair Avenue East and O'Connor Drive will commence in mid-2022. To offset the impacts of the resulting parking loss to area businesses, Transportation Services has worked with the TPA to identify additional paid parking spaces that could be added in the areas impacted.

Transportation Services and TPA staff reviewed converting locations of existing daytime time limit parking, overnight permit parking and no parking to paid, on-street parking. The review considered parking areas of high demand that are functionally safe, appropriate, and economically viable. All locations identified in this report are located on O'Connor Drive. None of the locations identified in this report are subject to overnight permit parking.

Based on this review, Transportation Services is recommending the introduction of pay-and-display parking on the south and east side, for the following sections on O'Connor Drive where unpaid one-hour time limit parking is in effect:

- Between a point 50 metres north of Gardens Crescent and Dohme Avenue
- Between a point 110 metres north of Dohme Avenue and Yardley Avenue

The existing parking regulations on the south and east sides of O'Connor Drive, between Gardens Crescent and Yardley Avenue, are generally as follows:

- Pay-and-display, between Gardens Crescent and a point 50 metres north of Gardens Crescent, and between Dohme Avenue and a point 110 metres north of Dohme Avenue

- No stopping, from 7:00 a.m. to 9:00 a.m. and from 4:00 p.m. to 6:00 p.m., Monday to Friday
- Maximum one-hour parking, at all other times

The proposed spaces will operate outside the existing peak period stopping prohibitions. The proposed amendments will result in approximately 52 new on-street paid parking spaces.

The Ward Councillor has been advised of the recommendations of this staff report.

CONTACT

Dan Clement, CET, Manager Traffic Operations (Area 1), Transportation Services, 416-397-5021, Dan.Clement@toronto.ca

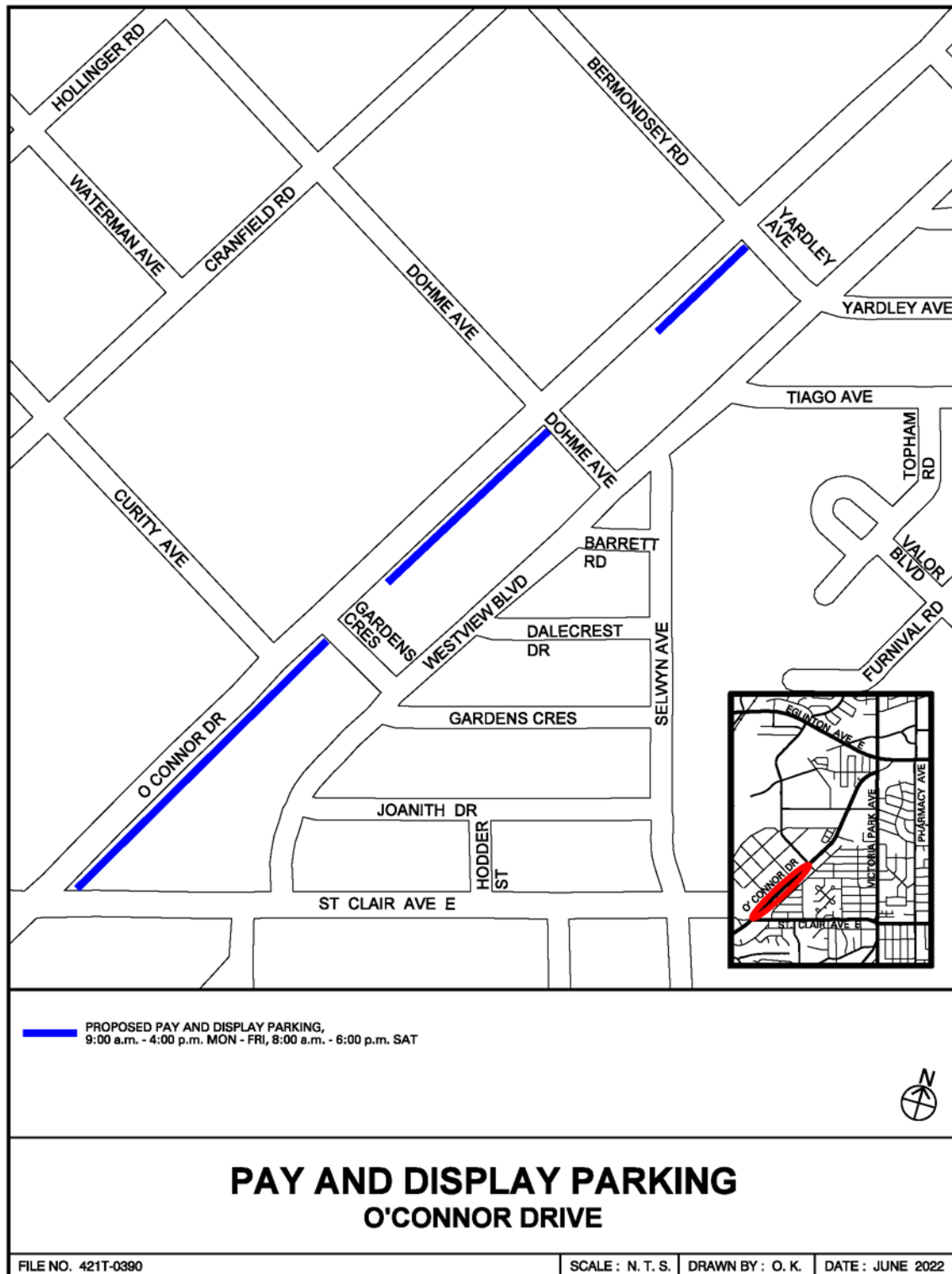
SIGNATURE

Roger Browne, M.A.Sc., P. Eng.
Acting Director, Traffic Management, Transportation Services

ATTACHMENTS

Attachment 1: Map - Parking Machines - O'Connor Drive
Attachment 2: Parking Regulations to be Rescinded
Attachment 3: Parking Regulations to be Enacted

Attachment 1: Map - Parking Machines - O'Connor Drive.



Attachment 2: Parking Regulations to be Rescinded

CHAPTER 950 – SCHEDULE XV: PARKING FOR RESTRICTED PERIODS

Highway	Side	Between	Time and / or days	Maximum period permitted
O'Connor Drive	South and East	Woodbine Avenue and a point opposite of Skopje Gate	Anytime	1 hour

Attachment 3: Parking Regulations to be Enacted

CHAPTER 910 - SCHEDULE 1: PARKING MACHINES

Highway	Side Parking	Between	Hours (daily as indicated below)	Fee / Time Limit	Maximum Parking Period
O'Connor Drive	South and East	50 metres north of Gardens Crescent and Dohme Avenue	9:00 a.m. - 4:00 p.m. Mon to Fri, Sat 9:00 a.m. - 6:00 p.m.	\$2.00 for 1 hour	3 hours
O'Connor Drive	South and East	110 metres north of Dohme Avenue and Yardley Avenue	9:00 a.m.-4:00 p.m. Mon to Fri, Sat 9:00 a.m. - 6:00 p.m.	\$2.00 for 1 hour	3 hours

CHAPTER 950 – SCHEDULE XV: PARKING FOR RESTRICTED PERIODS

Highway	Side	Between	Time and / or days	Maximum period permitted
O'Connor Drive	South and East	Yardley Avenue and Skopje Gate	Anytime	1 hour
O'Connor Drive	South and East	Woodbine Avenue and St. Clair Avenue East	Anytime	1 hour