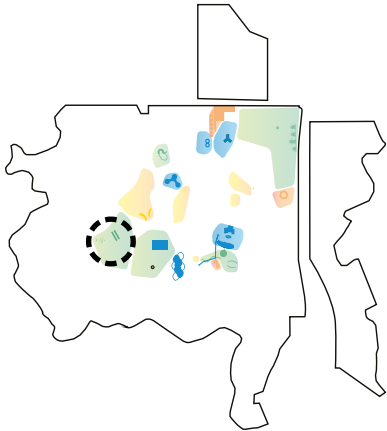


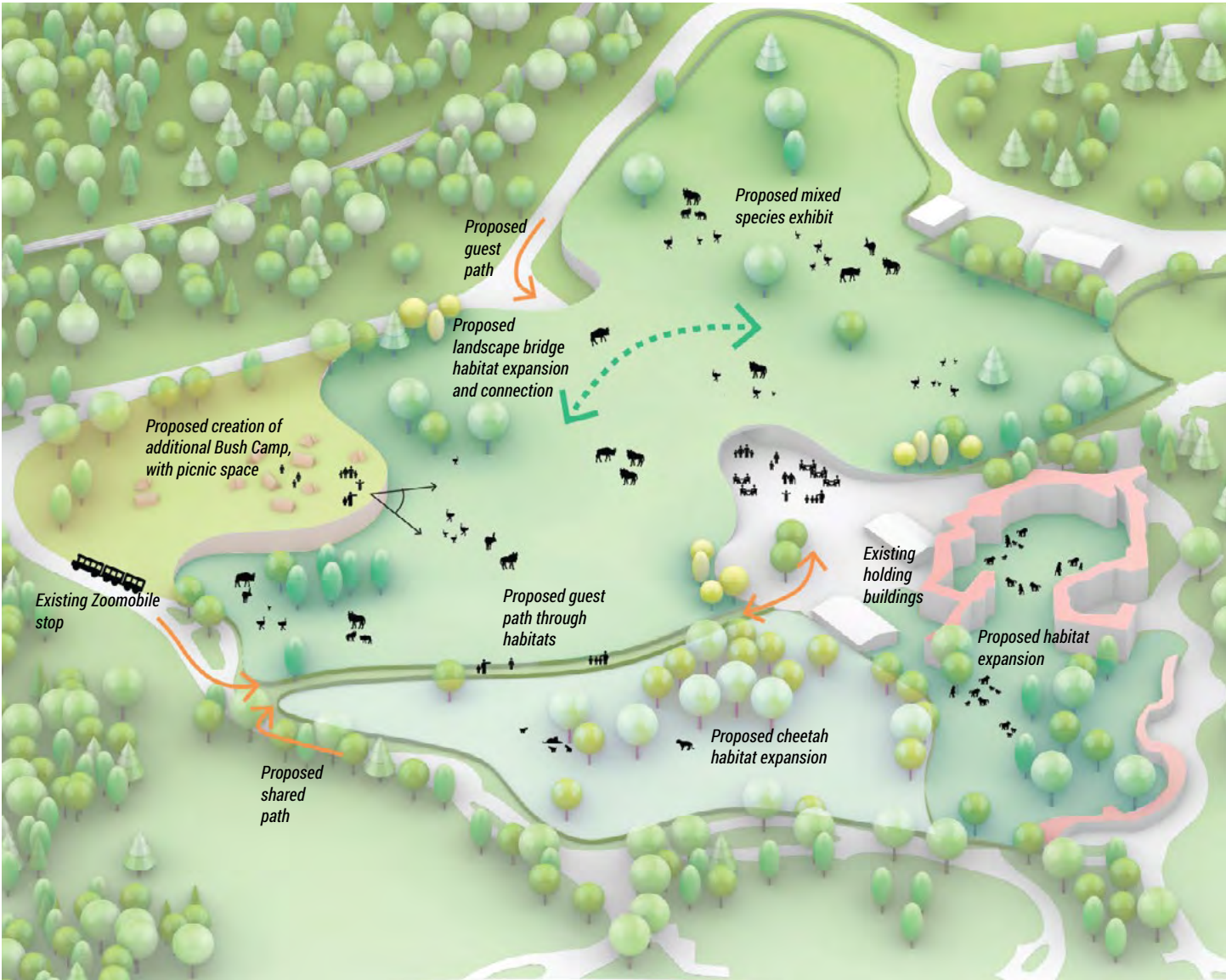
5. THE NEW MASTER PLAN

5.3. CAPITAL PROJECTS: SAFARI MEANDER

The Western Savanna habitats are currently somewhat disconnected, with existing landscape areas that feel underused, while spaces for guests feel removed from animals in this area. The Safari Meander connects smaller habitat areas, while also bridging over an existing service pathway that now becomes part of a guest path, pulling guests underneath species that are able to walk over them, and between two large habitat areas, creating a Safari feeling and a journey of discovery.



Existing



Proposal

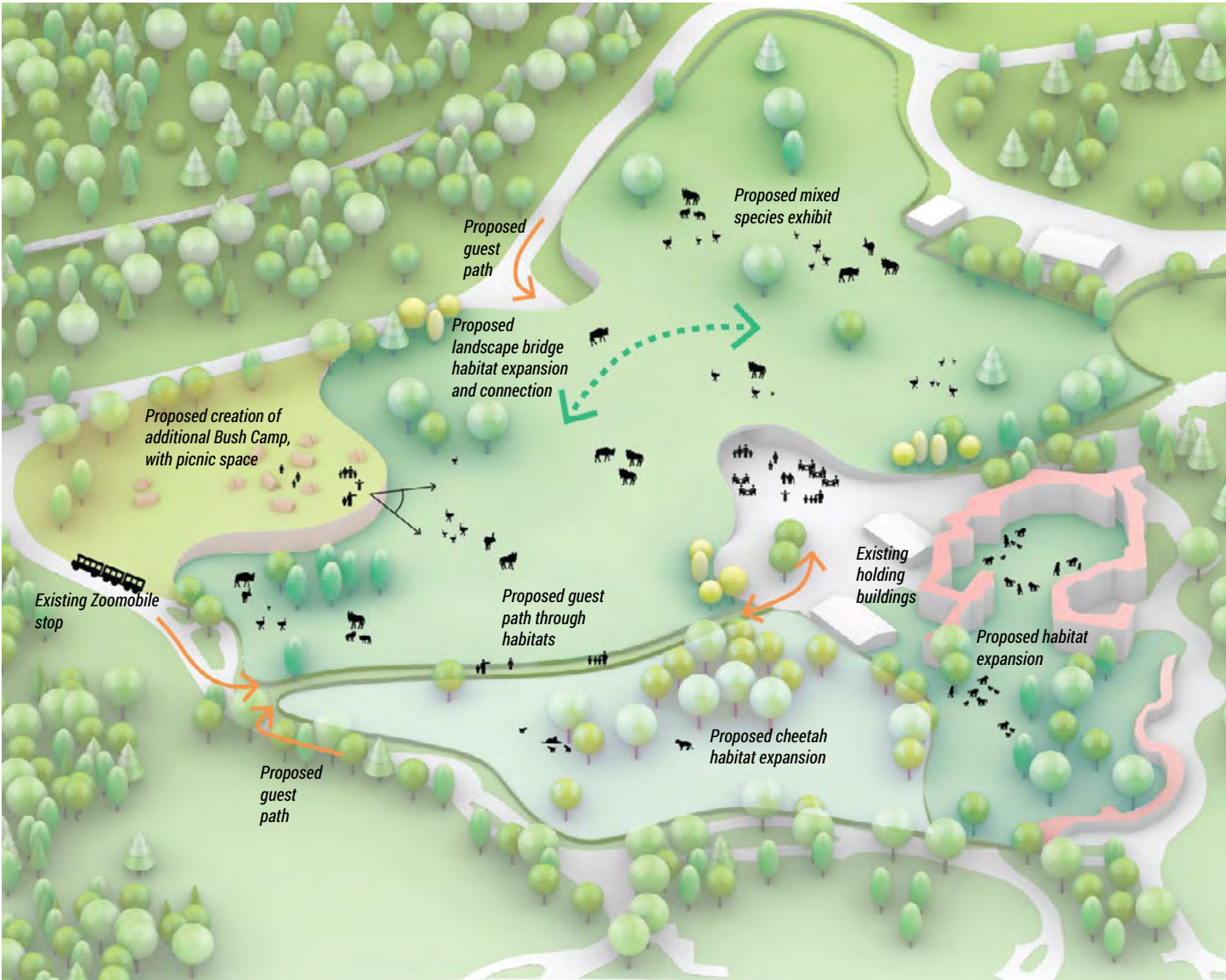
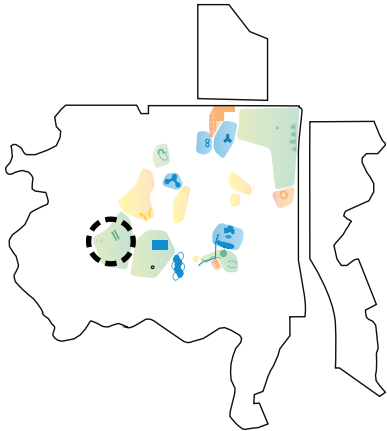
5. THE NEW MASTER PLAN

5.3. CAPITAL PROJECTS: SAFARI MEANDER

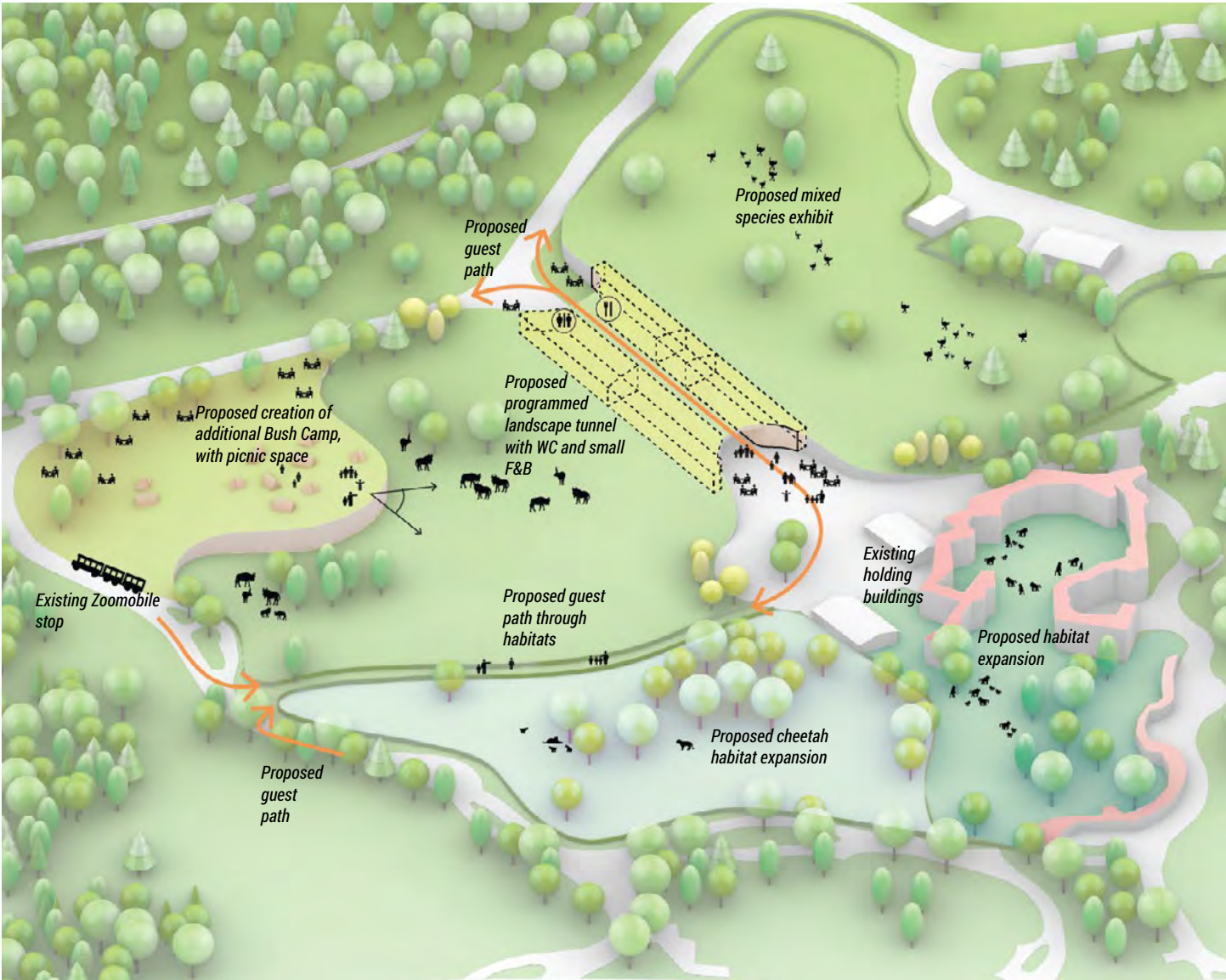
Connecting habitats *above* guests creates a new and unanticipated wonderful experience for guests and new vantage point for animals while also creating a new tunnel program space. Massing of the landscape tunnel allows program to be embedded within it, creating a sheltered, cooler space, with ample programming, that acts as a refuge for guests in the hot summer months. This immersive tunnel underneath the landscape becomes a platform for dialogue, hosting displays and installations and acting as a place where discussions about the impacts of climate change on soils, root systems, water retention in the landscape, and the deeper, less-explored layers of connected landscape systems has the opportunity to occur. Programming within the tunnel includes washrooms that support the Savanna Bush Camp overnight experience that now looks out onto this broad, extensive habitat, allowing guests to experience the sights and sounds of the Savanna at night.

Preliminary program

- **8 m wide landscape tunnel**
- tunnel acts as a landbridge, so is sturdy enough to allow large animals (ostrich, gnu, rhino) to walk over it
- **8 000 sqft in two small buildings** - embedded in tunnel
- this includes bathrooms, small storage areas, interactive display surfaces, a small interpretive room and a food kiosk



Proposal: landscape bridge



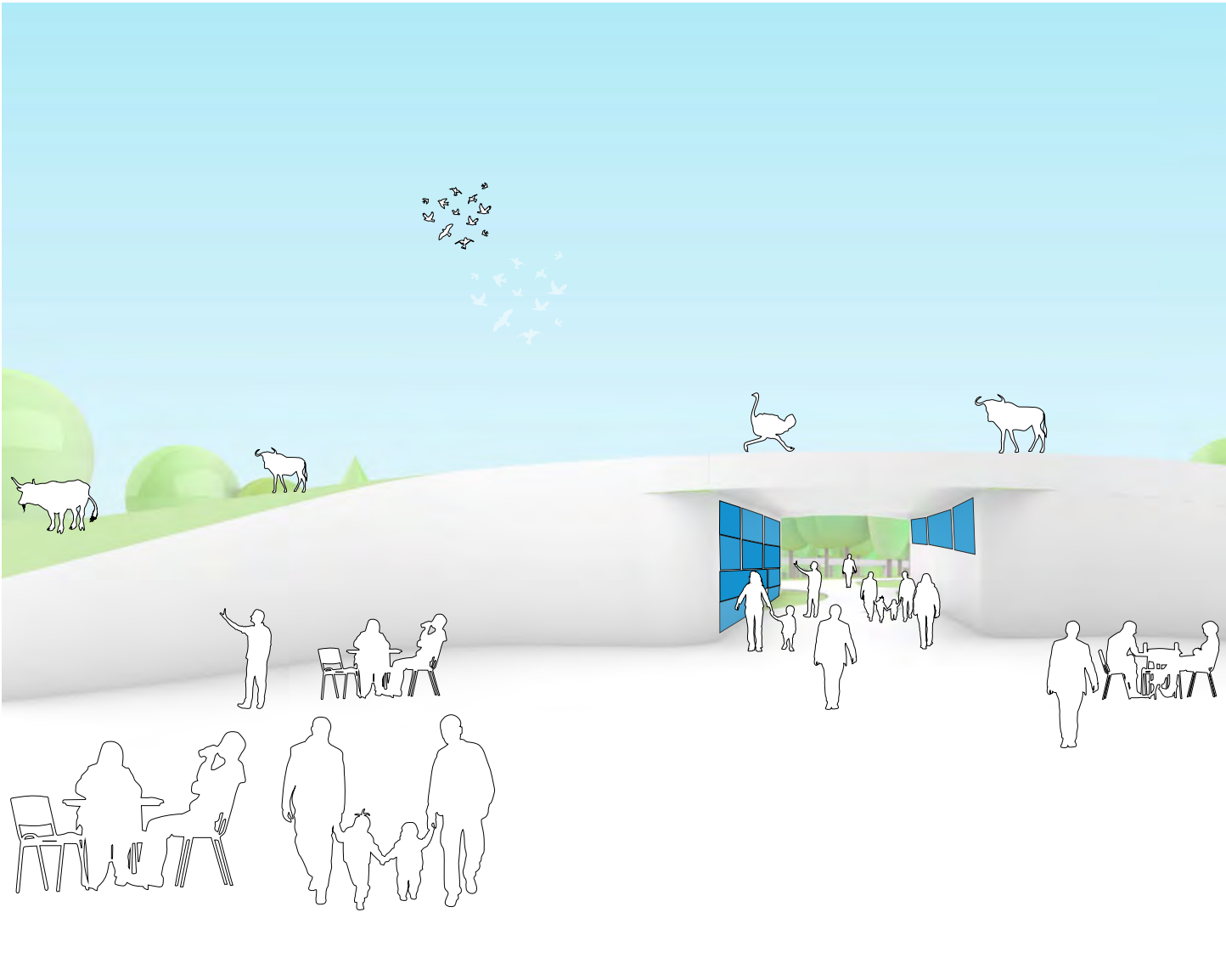
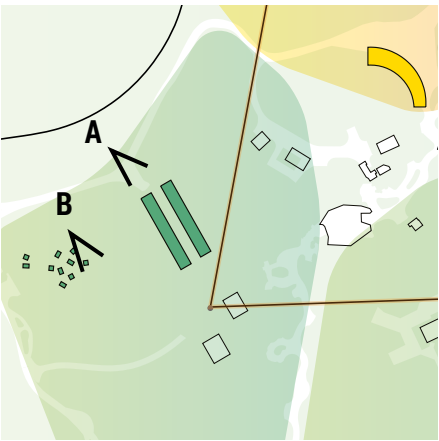
Proposal: guest experience tunnel under landscape

5. THE NEW MASTER PLAN

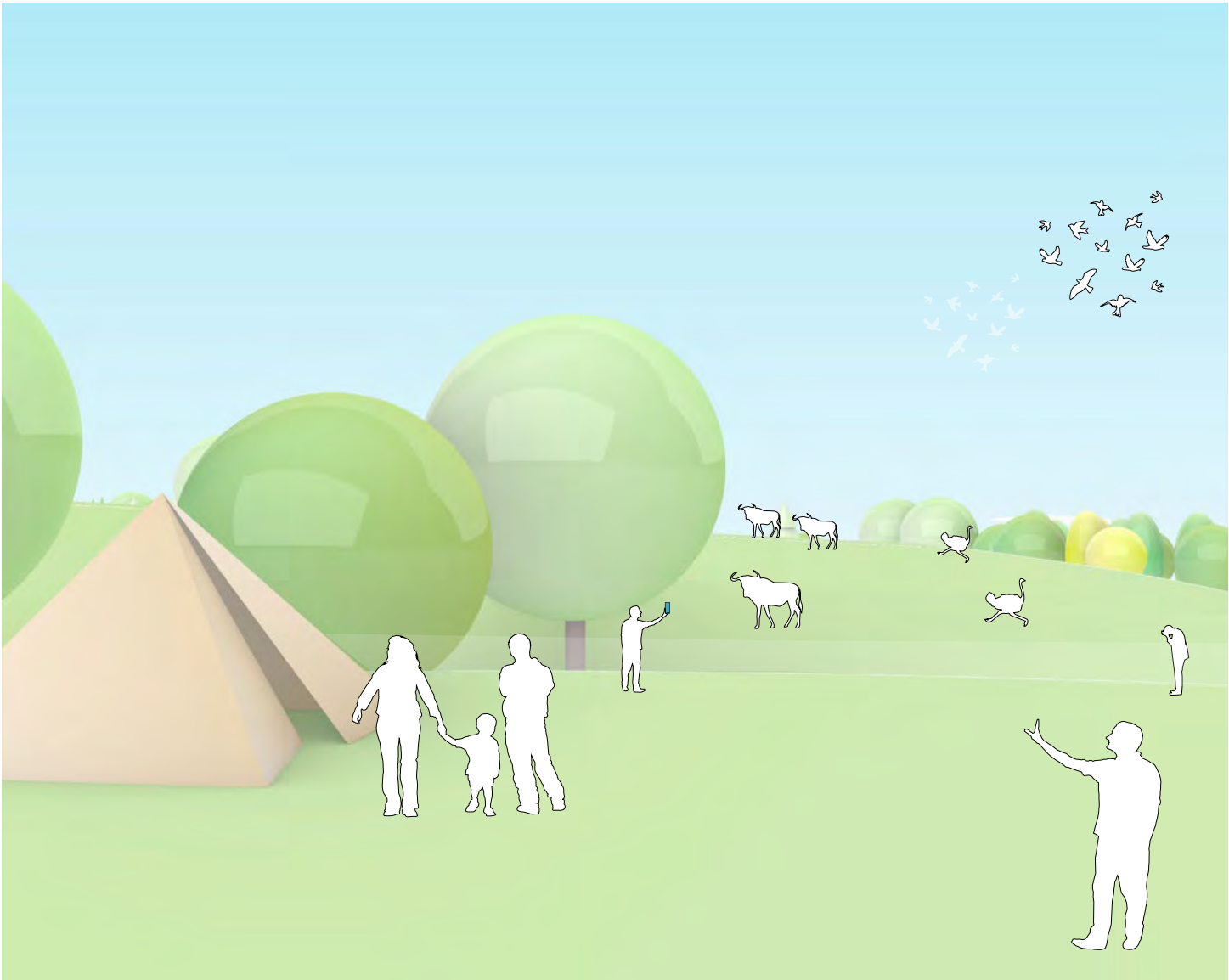
5.3. CAPITAL PROJECTS: SAFARI MEANDER VIEWS

Safari Meander creates entirely new views for guests, bringing animals up above them, while also giving these species a new perspective, looking down on guests from their habitat bridge. Camping experiences here offer views directly onto habitats, creating the feeling of camping in a very wild space, with the sights and sounds of animals right outside of guests' tents!

A set of physical markers within the landscape reveal stories of wildlife. The markers encourage dialogue and can be commissioned works by local artists, in collaboration with Zoo scientists. The tunnel under the habitat bridge becomes an immersive portal, able to transport guests to the Savanna through footage filmed on location with conservation partners in Africa, including synchronous natural sounds designed to express the sonic qualities of the landscape the animals above call home.



View A: view towards the habitat landscape bridge, with interpretive tunnel



View B: a new Bush Camp overnight experience offering the sights and sounds of Savanna species

5. THE NEW MASTER PLAN

5.3. CAPITAL PROJECTS: SAFARI MEANDER, BEGINNING OF A MEMORABLE JOURNEY



5. THE NEW MASTER PLAN

5.3. CAPITAL PROJECTS: SAFARI MEANDER BUSH CAMP WITH AFRICAN SPECIES



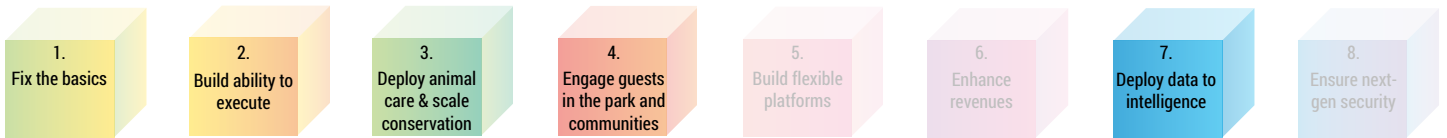
5. THE NEW MASTER PLAN

5.3. CAPITAL PROJECTS: SAFARI MEANDER

Proposed experience of IT projects:

Building technology partnerships, Your Zoo will become an innovation zone, welcoming collaborators from the arts and sciences to partner in the creation of high-tech interactive displays in the Safari Meander interpretive tunnel. These become ways to engage a broader audience in conversations around climate change, soil science, and species migration, to name a few. Developing technology that welcomes creative partners and technological innovators into this space will allow Your Zoo to offer new experiences regularly, as well as host small events and create return visits. Implementation of smart signage and interactive maps gives guests updated information about the species mix in this habitat and about related conservation initiatives.

Building blocks of the Information Technologies (IT) strategy for this area:



IT projects recommended to be investigated in this project (refer to Appendix 5 for the full Technology Master Plan):

- 1.1. Implement Wifi site wide / Install Network
- 1.7. Implement guest distress system / Zoo wide alarm
- 2.1. Manage Technology Partnerships/Become an innovation zone
- 3.3. Implement animal cameras and sensors (heat, location)
- 3.7. Predictive care based on history and sensors
- 3.8. Centralized Animal Database in warehouse (reproduction, welfare, nutrition)
- 4.3. Implement smart signage across the Zoo/interactive maps
- 7.12. Implement Smart Washroom Facilities



Interactive display in the interpretive tunnel created through partnerships with technology innovators.

Smart signage and interactive maps giving updated information on species in this area.

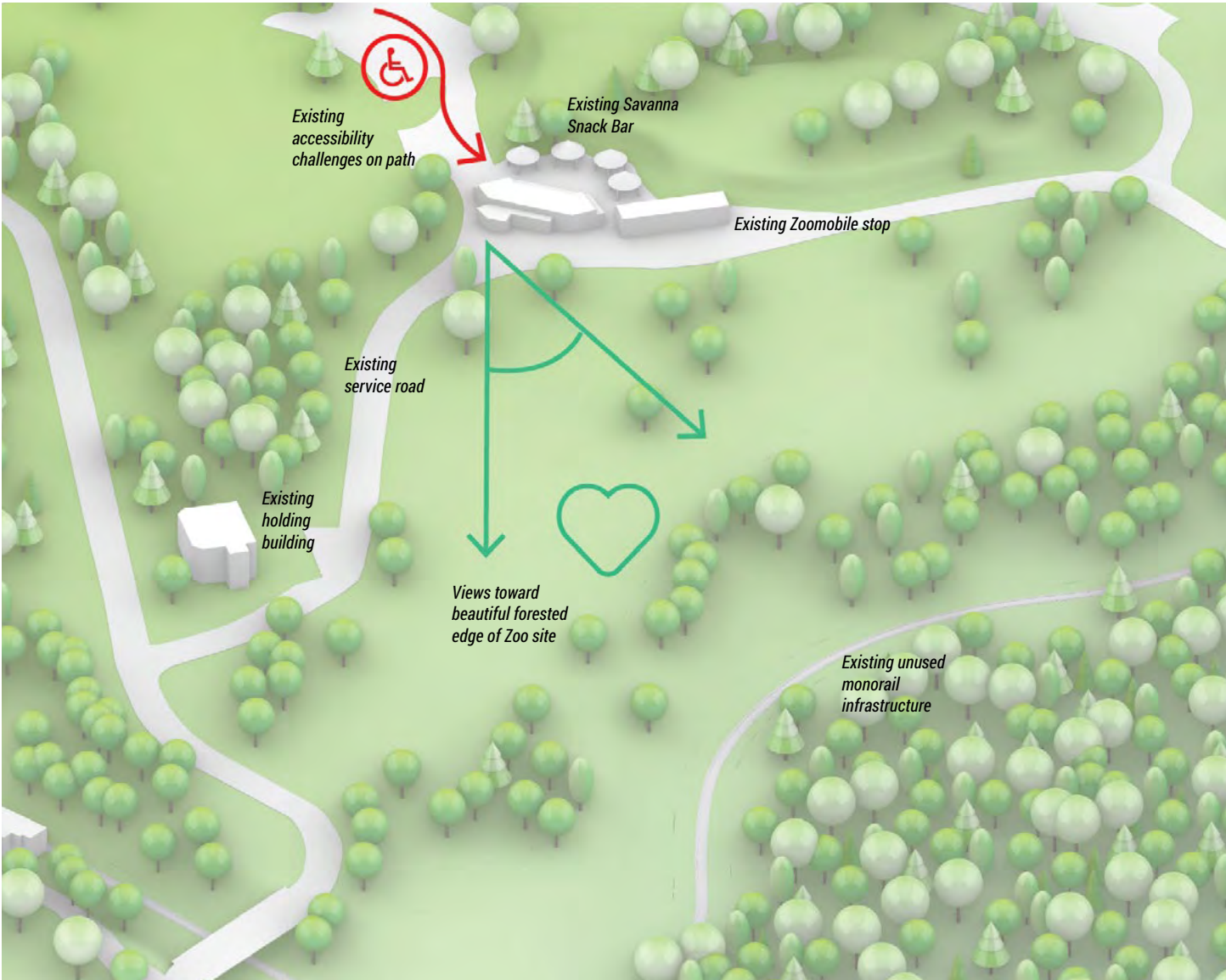
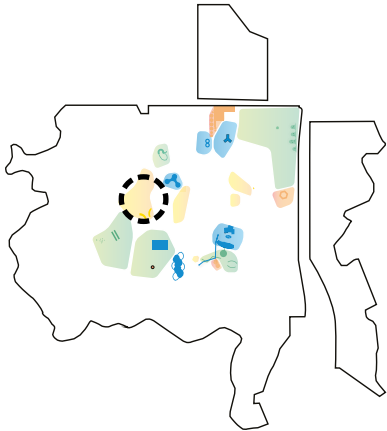
5. THE NEW MASTER PLAN

5.3. CAPITAL PROJECTS: THE FORAGE FARM (OPERATING PROJECT)

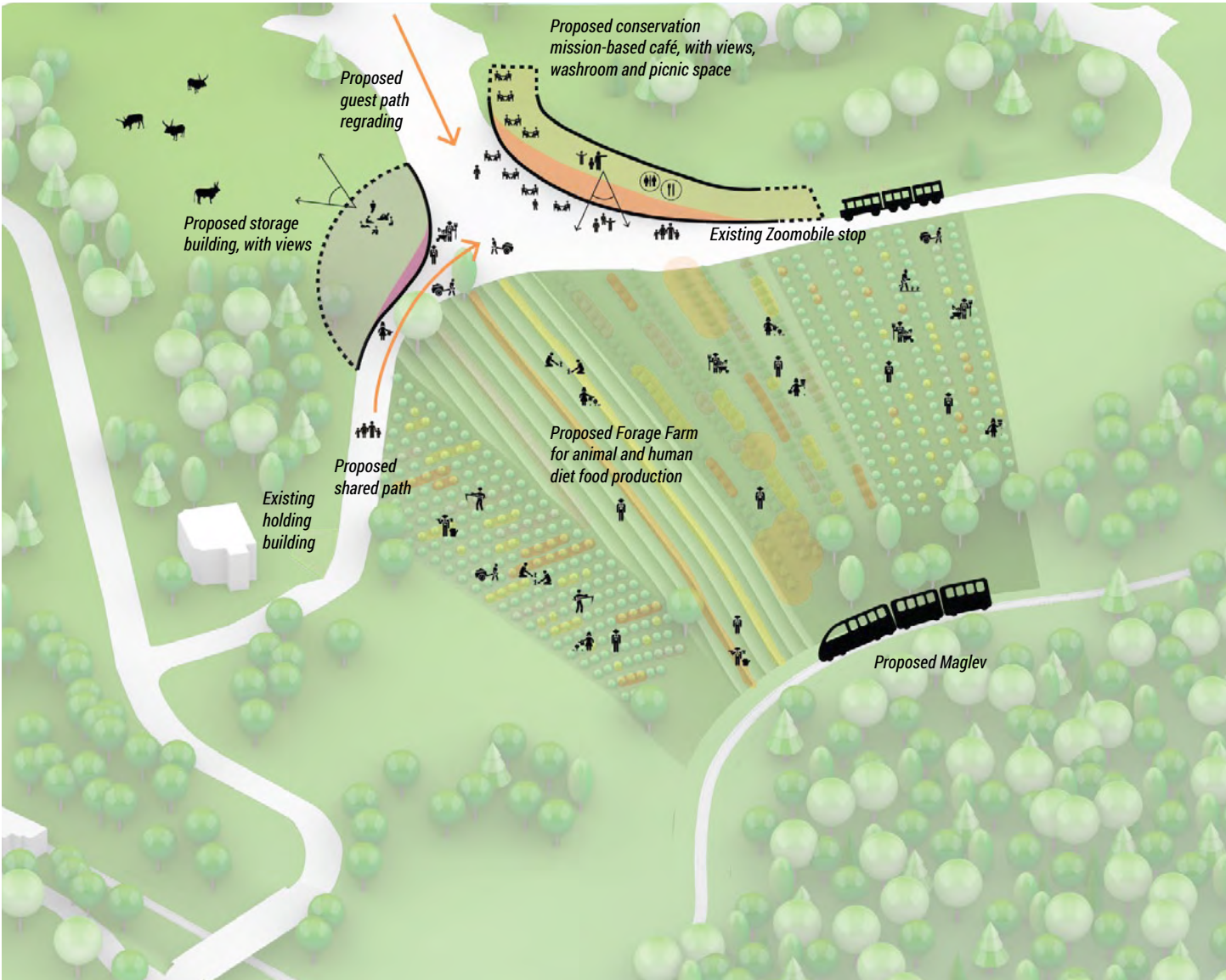
This Western edge of Your Zoo, extending between the Savanna Snack Bar and the old monorail infrastructure, is comprised of some underused green space, between areas that have recently had trees planted. The underused spaces have the potential to become developed as a production area for forage crops and diet material for species, with a new café and new storage building for farm materials embedded in the landscape, creating new views onto this space from the slopes that become their roofs. This offers guests an opportunity to participate in production on site, with programmed farm-related activities that allow the community to actively engage in the nutrition component of caring for animals. This crop production builds on browse growth that is currently happening on site and in other locations near the Zoo, and further develops Your Zoo's commitment to reducing its carbon footprint and closing loops by growing and sourcing materials closer to home. By nesting buildings into the landscape, they are able to naturally stay cooler in summer and warmer in winter, further reducing Your Zoo's carbon footprint.

Preliminary program

- **3 770 sqft café** - right building, also contains bathroom
- **2 100 sqft storage building** - building on left
- both buildings embedded in landscape
- buildings provide views onto farm and habitats



Existing

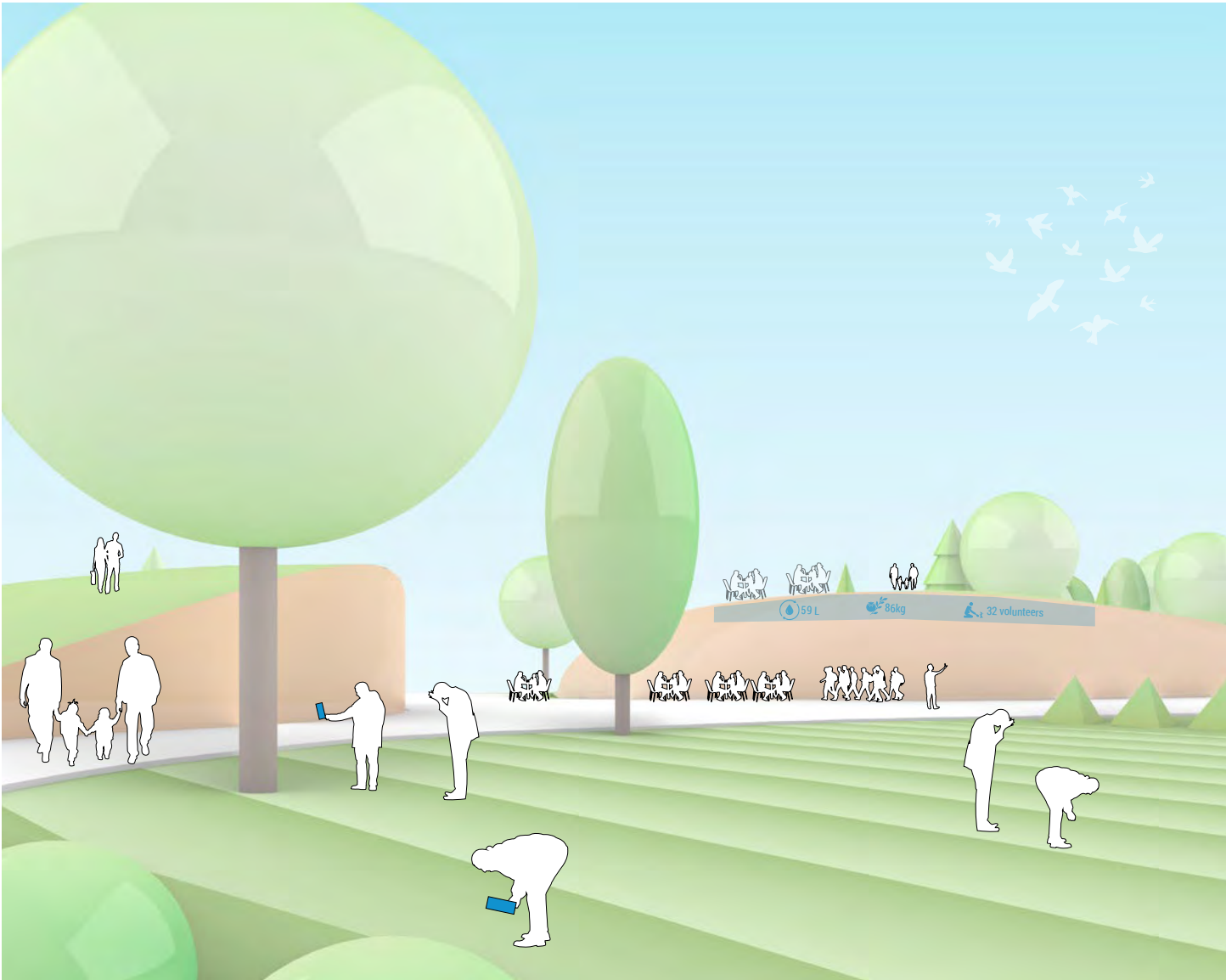
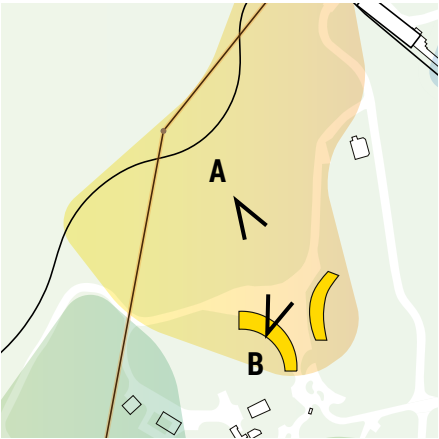


Proposal

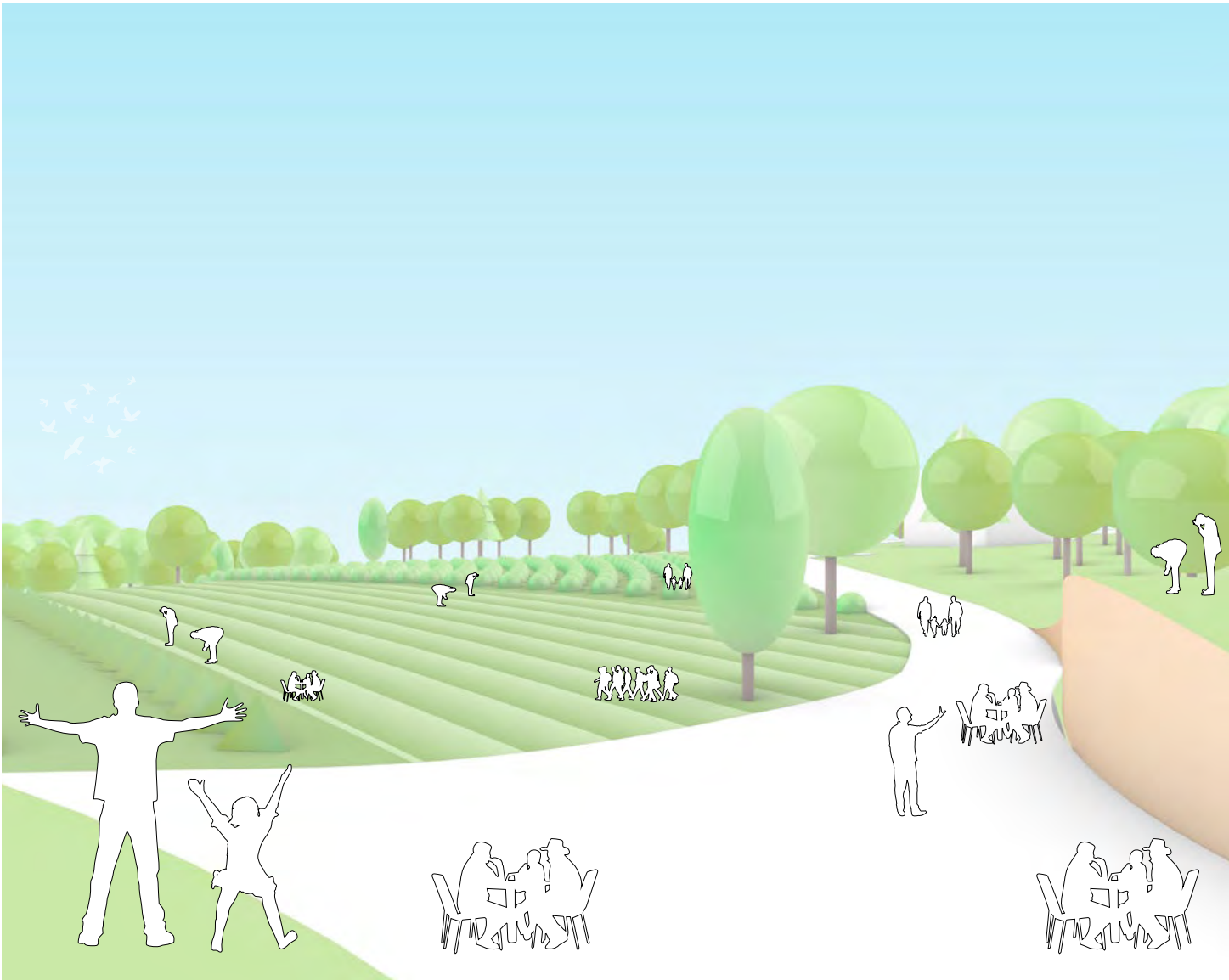
5. THE NEW MASTER PLAN

5.3. CAPITAL PROJECTS: THE FORAGE FARM VIEWS

The Forage Farm offers a new productive landscape on site that actively invites guests to participate in the nutrition narrative at Your Zoo, and to see and understand the different components that comprise the nutrition science behind species' diets. The café and storage building offer new views onto the productive landscape, with the café being a conservation-mission-based café, providing a more sustainable food option that directly supports Your Zoo's work to save species offsite, and connects guests to Your Zoo's broader vision for a more sustainable future at home and abroad.



View A: view from the forage fields



View B: looking towards the productive growing area and storage building, from the café roof

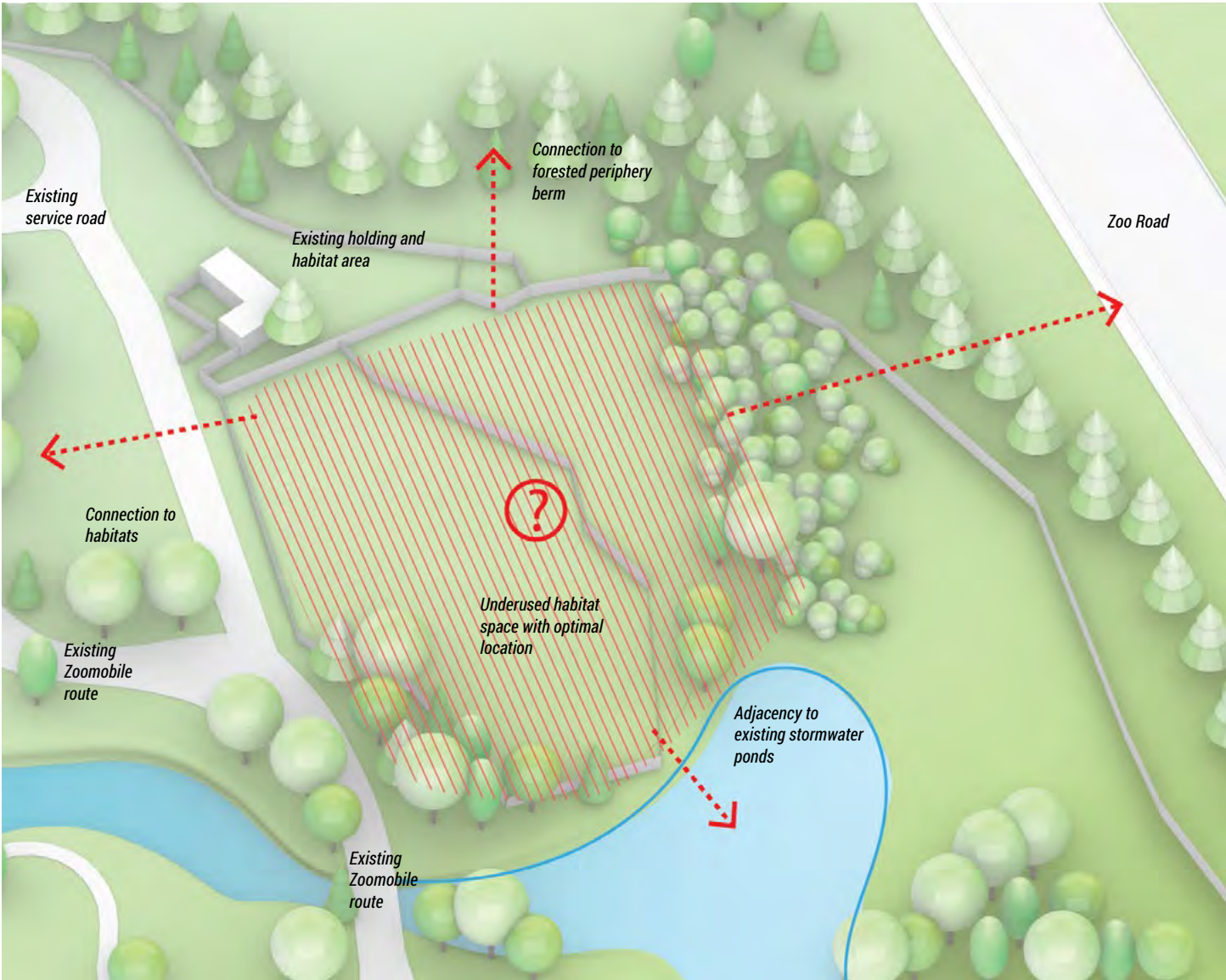
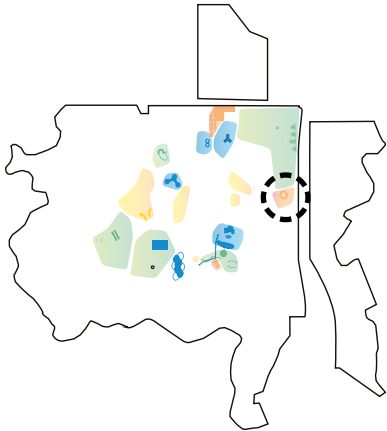
5. THE NEW MASTER PLAN

5.3. CAPITAL PROJECTS: THE DAYCARE (PARTNERSHIP PROJECT)

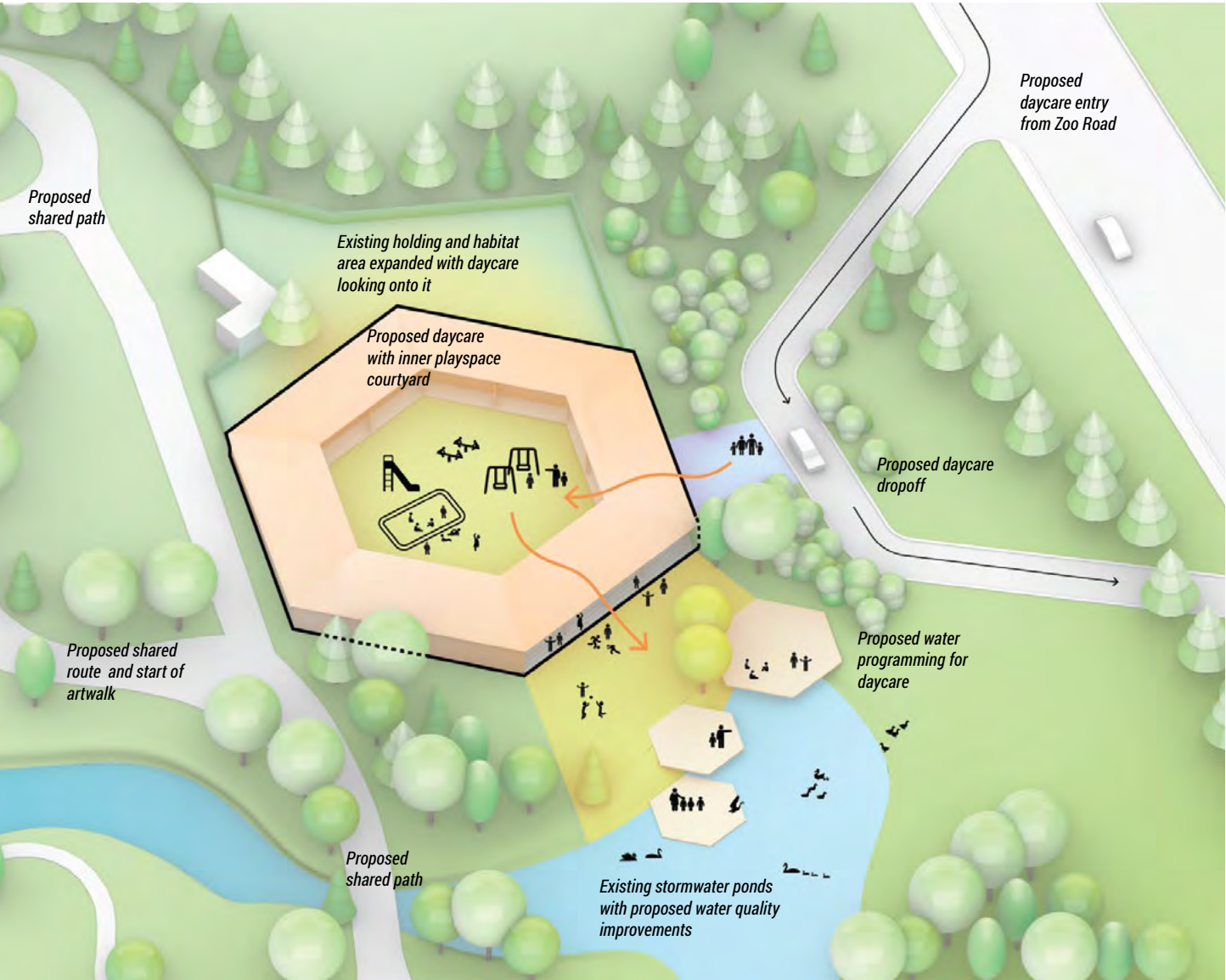
This corner of Your Zoo, just Northeast of Parking Lot 1 and the entry gates, has a great connection to the stormwater pond, with lush vegetation, as well as great proximity to the Kids Zoo. Habitat space here is small and underwhelming and this corner of the site is adjacent to Meadowvale Road and Zoo Road but does not connect to either. This presents a fantastic opportunity for the location of a daycare that offers incredible educational opportunities with connections to species on site, and easy access with a new connection created from Zoo Road. The Daycare occupies a space that can be public, as it sits near the periphery of Your Zoo, and offers a program that can serve both Zoo staff and the broader community. Low building massing with an inner courtyard and multiple external connections to this courtyard allows the daycare program to remain contained when it needs to, but also to spill out and be very much connected to its surroundings, including the habitats and ponds adjacent to it. Refer to page 109 for a proposed partnership funding roadmap for the Daycare project.

Preliminary program

- **5 260 sqft building total**
- includes 1180 sqft/daycare unit x 4 units, + 540 sqft nap room
- single level
- **6 100 sqft outdoor play yard** - in middle of building
- **2 800 sqft dock total**
- 3 docks, two at 700 sqft each, one at 1 400sqft



Existing

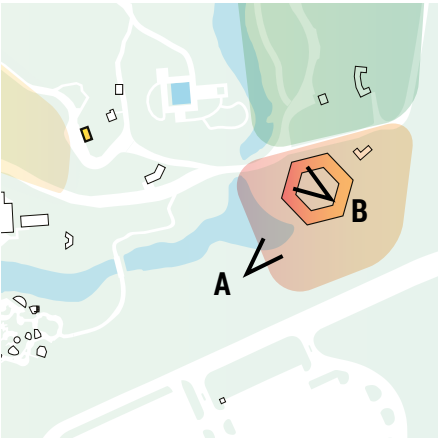


Proposal

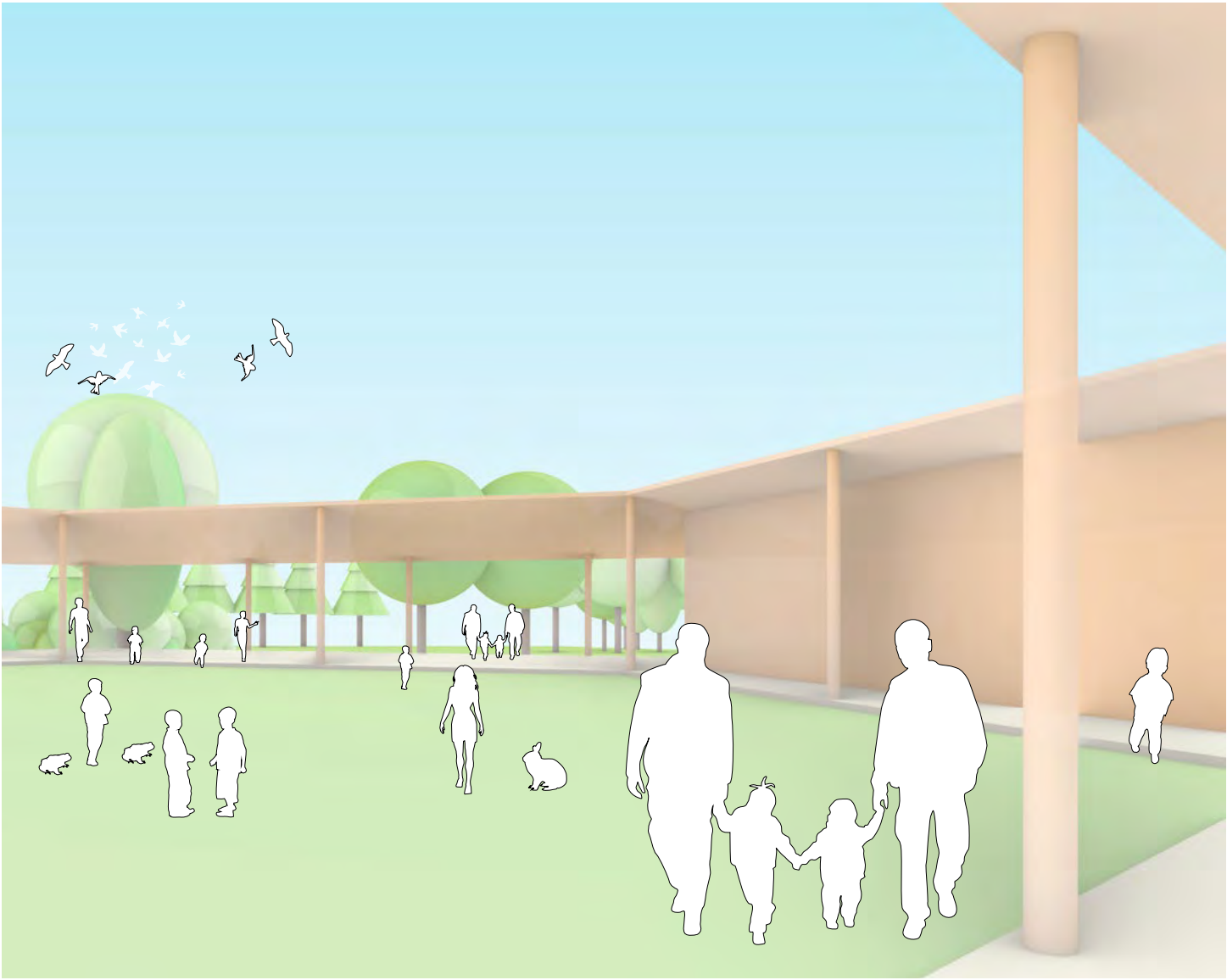
5. THE NEW MASTER PLAN

5.3. CAPITAL PROJECTS: THE DAYCARE VIEWS

The Daycare creates an opportunity for kids to grow up surrounded by incredible opportunities for exploration of native flora and fauna, as well as educational opportunities with other species. The building connects to the landscape, offering access to the water for pond study, and pulling the landscape into the building's courtyard play area. A Zoo daycare will embed kids in an environment where habitat preservation, connection to and respect for animals, sustainable harvesting, material reuse and closing resource loops is the norm.



View A: heading towards the Daycare, coming from the Kids Zoo



View B: unique opportunities for play and exploration inside the daycare inner play area

5. THE NEW MASTER PLAN

5.3. CAPITAL PROJECTS: THE DAYCARE, MANY SPECIES GROWING TOGETHER



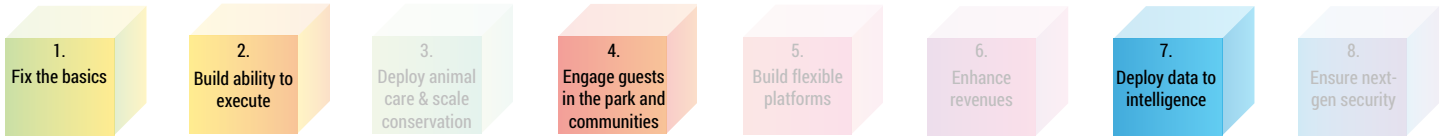
5. THE NEW MASTER PLAN

5.3. CAPITAL PROJECTS: THE DAYCARE

Proposed experience of IT projects:

The Daycare is able to take advantage of Your Zoo’s many technological advances, including through the improvement of last mile technologies to get to Your Zoo site, which is critical in welcoming the community to the Daycare by ensuring that barriers to arriving here are removed. Once at the Daycare, students are able to explore the many technologies across the Zoo site, however the focus at the Daycare itself is on removing the layer of technology between children and species, and providing them hands-on experiences with the species that they have regularly within the daycare, such as chickens and goats. Creating an emotional connection through these moments will help build empathy and create the next generation of impassioned conservationists.

Building blocks of the Information Technologies (IT) strategy for this area:



IT projects recommended to be investigated in this capital project (refer to page 149 in Appendix for full Technology Master Plan):

- 1.1. Implement Wifi site wide / Install Network
- 1.7. Implement guest distress system / zoo wide alarm
- 2.1. Manage Technology Partnerships / Become an innovation zone
- 4.6. Improve last mile to get to the Zoo
- 7.3. Implement sensors for building health monitoring and consumption



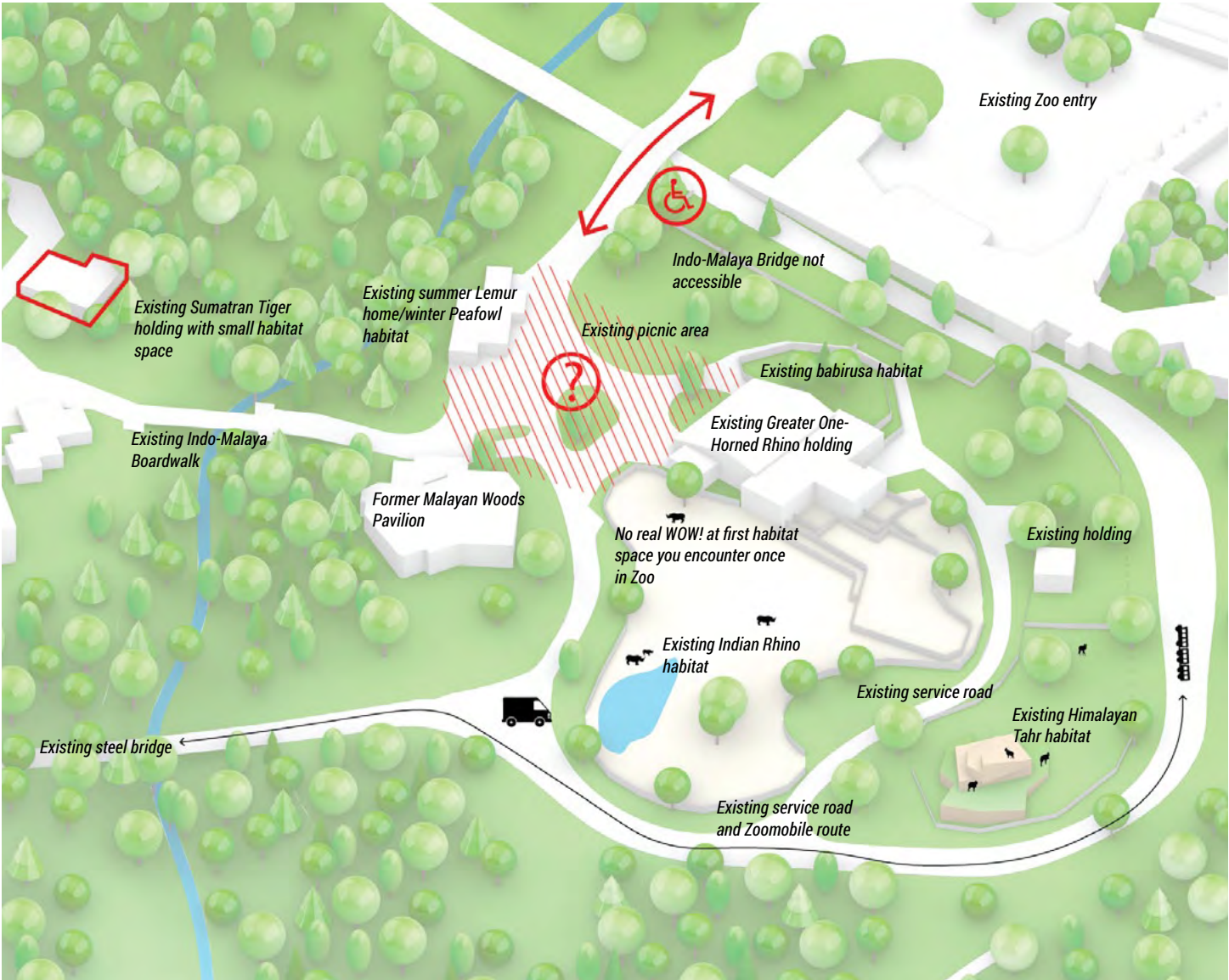
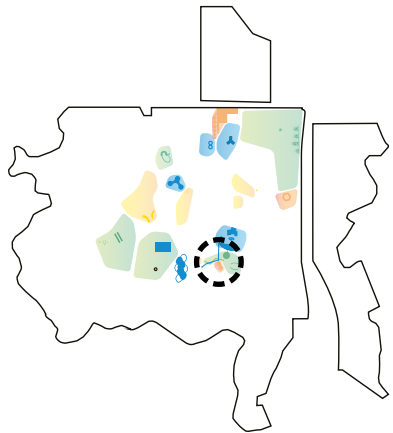
Daily manual feeding of chickens at the Daycare, creating a connection between children and animals.

The technology-free Nature Play yard, encouraging interactions between children, species and nature.

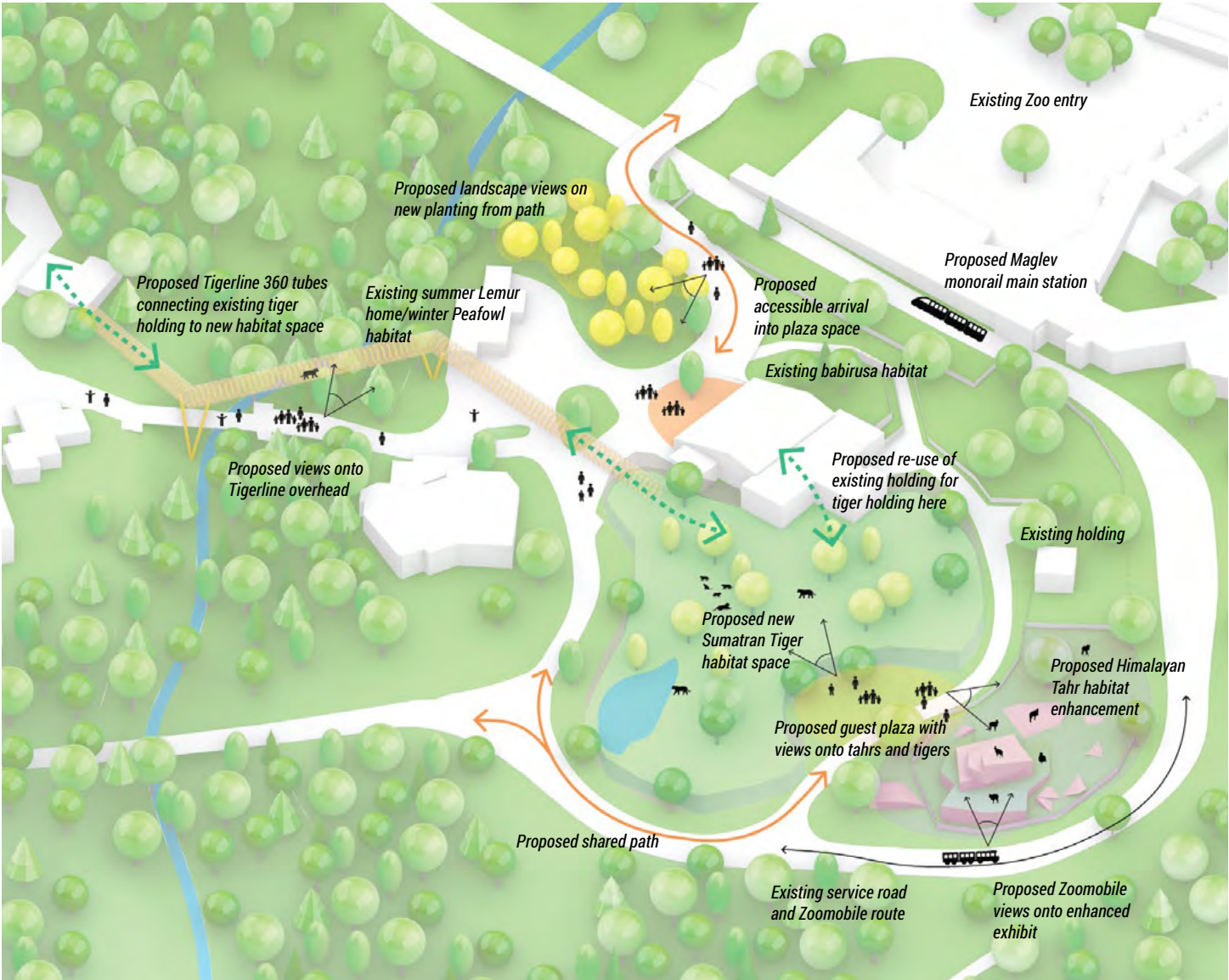
5. THE NEW MASTER PLAN

5.3. CAPITAL PROJECTS: THE TIGERLINE, SUMATRAN TIGER HABITAT EXPANSION

Upon entering the main gates at Your Zoo, if you proceed to your left you enter Indo-Malaya which presents accessibility challenges and leads into a large plaza-like space with small landscaped areas but lacks the real WOW. Greater one-horned rhinos and babirusa are here, with Himalayan tahrs only visible from the Zoomobile route and Sumatran tigers nestled into the ravine just beyond the Indo-Malaya Boardwalk. The opportunity exists to improve the pedestrian connection that begins upon arrival at Your Zoo and leads you through a fully accessible entry into a new landscape development and plaza space right in front of the existing Greater one-horned rhino building. Once the rhinos are phased out, over the long-term, Sumatran tigers gain a new, enhanced, expanded habitat with an exciting overhead connection from their existing habitat. The Himalayan tahr habitat becomes enhanced with new features providing enrichment for the tahrs and an improved guest experience. A revitalized plaza gathering space provides a connection for our guests between tahrs and tigers on a path offering new views into both habitats.



Existing



Proposal Step 1

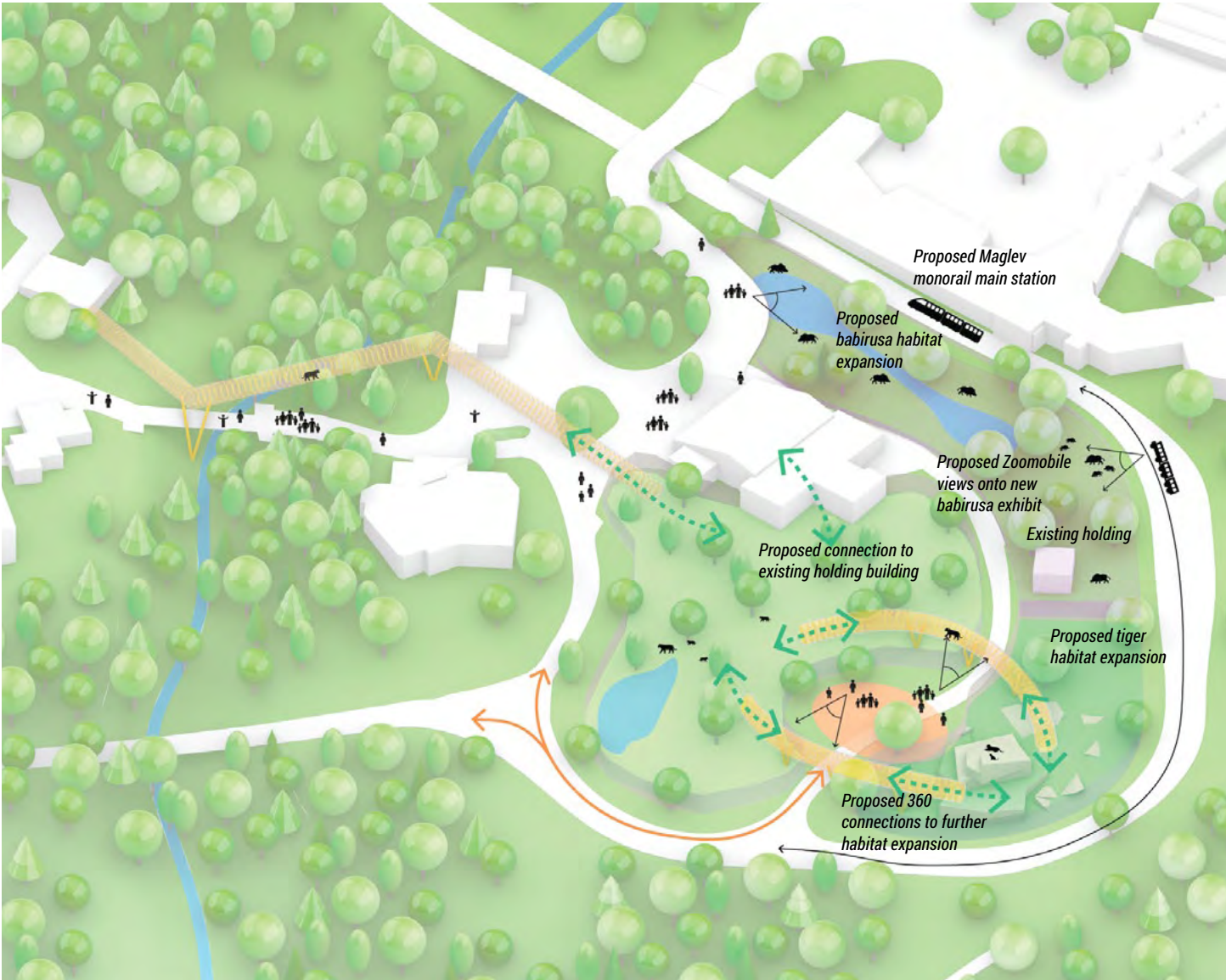
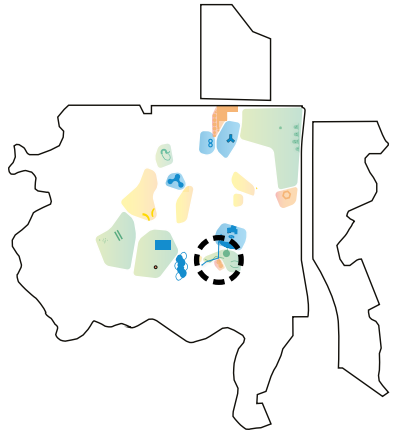
5. THE NEW MASTER PLAN

5.3. CAPITAL PROJECTS: THE TIGERLINE, SUMATRAN TIGER HABITAT EXPANSION

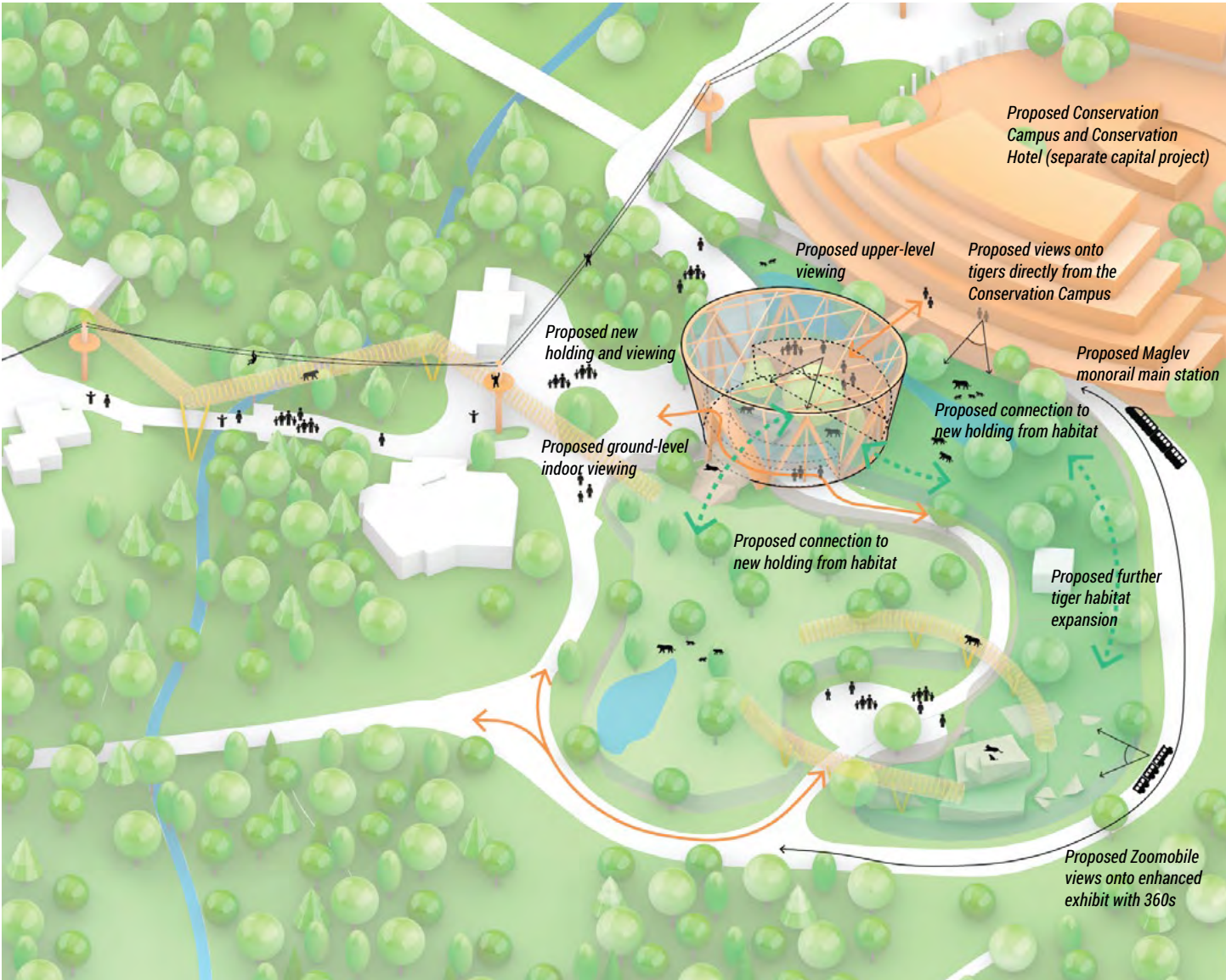
When the enhanced habitat is no longer needed for Tahrs, Sumatran tigers get further habitat expansion with unique climbing elements. This new tiger habitat becomes connected by 360 tubes going up and over the guest plaza, providing views for guests onto tigers above. This offers tigers more choice, and further enrichment, with each habitat space offering unique stimuli. In this phase, the space between the holding building and service road becomes modified with new water features as an enhanced, expanded babirusa habitat. This presents an exciting arrival experience as guests move from Your Zoo's entry across the bridge and encounter their first wildlife. Over the longterm, as babirusa no longer need this space, tiger habitat is further expanded, taking advantage of the unique and stimulating environment here. A new indoor viewing building with holding is developed with connections to the Conservation Campus offering views directly from rooms in the Conservation Campus Phase II onto tigers. The new holding also provides an upper viewing level onto tigers, with a ground-level path bringing guests through the building.

Preliminary program

- **7 600 sqft new building** - holding and viewing
- building has upper-level unobstructed views onto tigers, ground-level indoor viewing, connection between levels
- **230 m of 360 tubes** - allows tigers to move between different habitat areas above habitat
- 120 m from existing habitat, 2 x 55 m between new habitats
- **70 m long bridge** - connecting holding to conservation campus
- **2 400 sqft plaza space**
- **3 400 sqft water**



Proposal Step 2

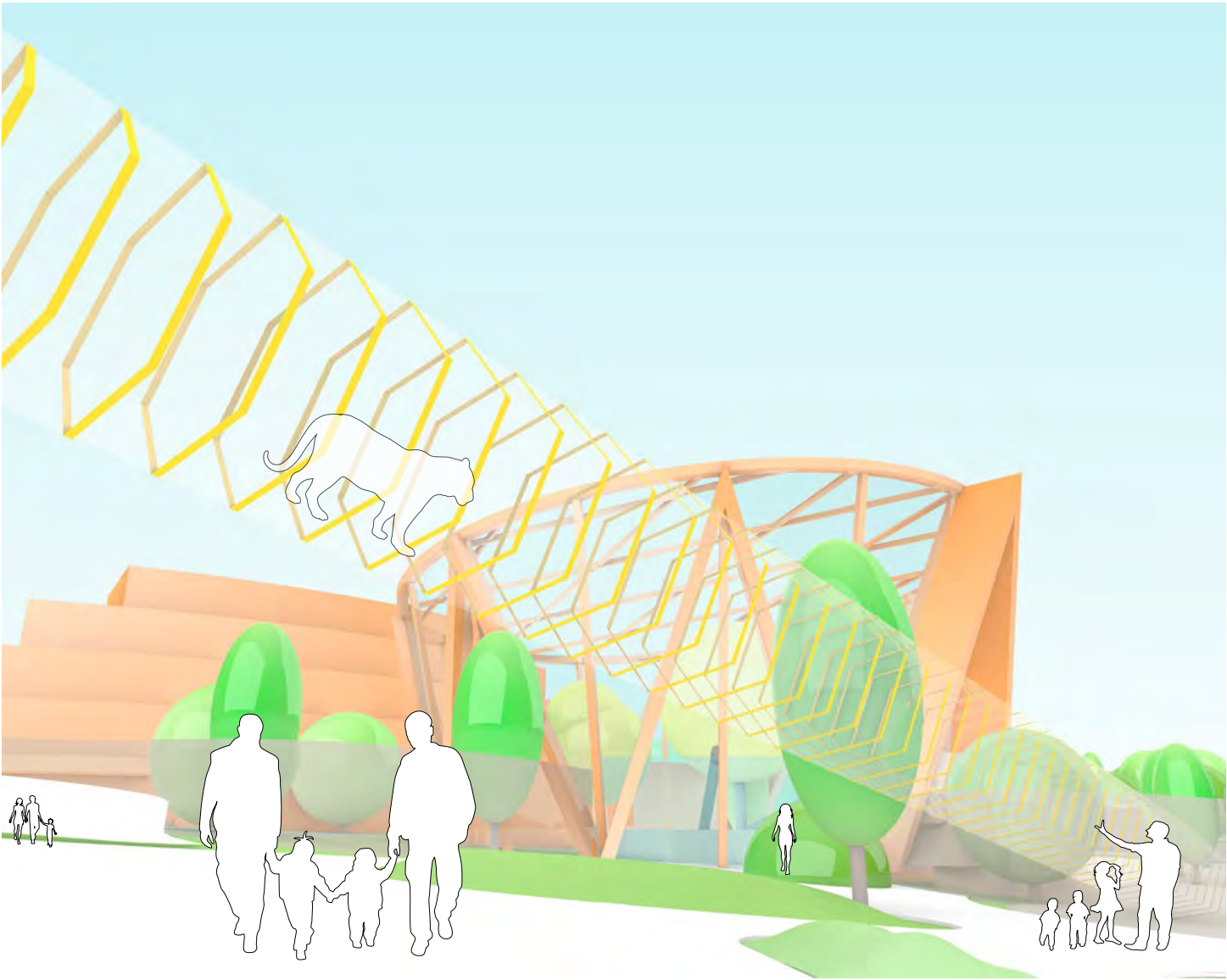
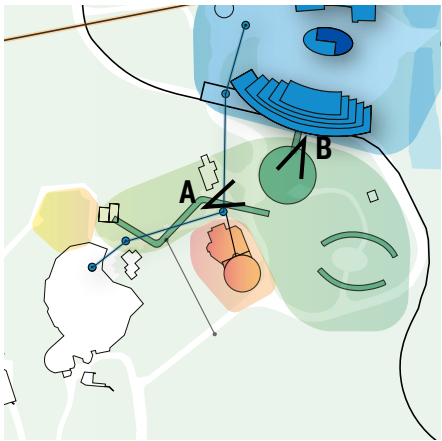


Proposal Step 3

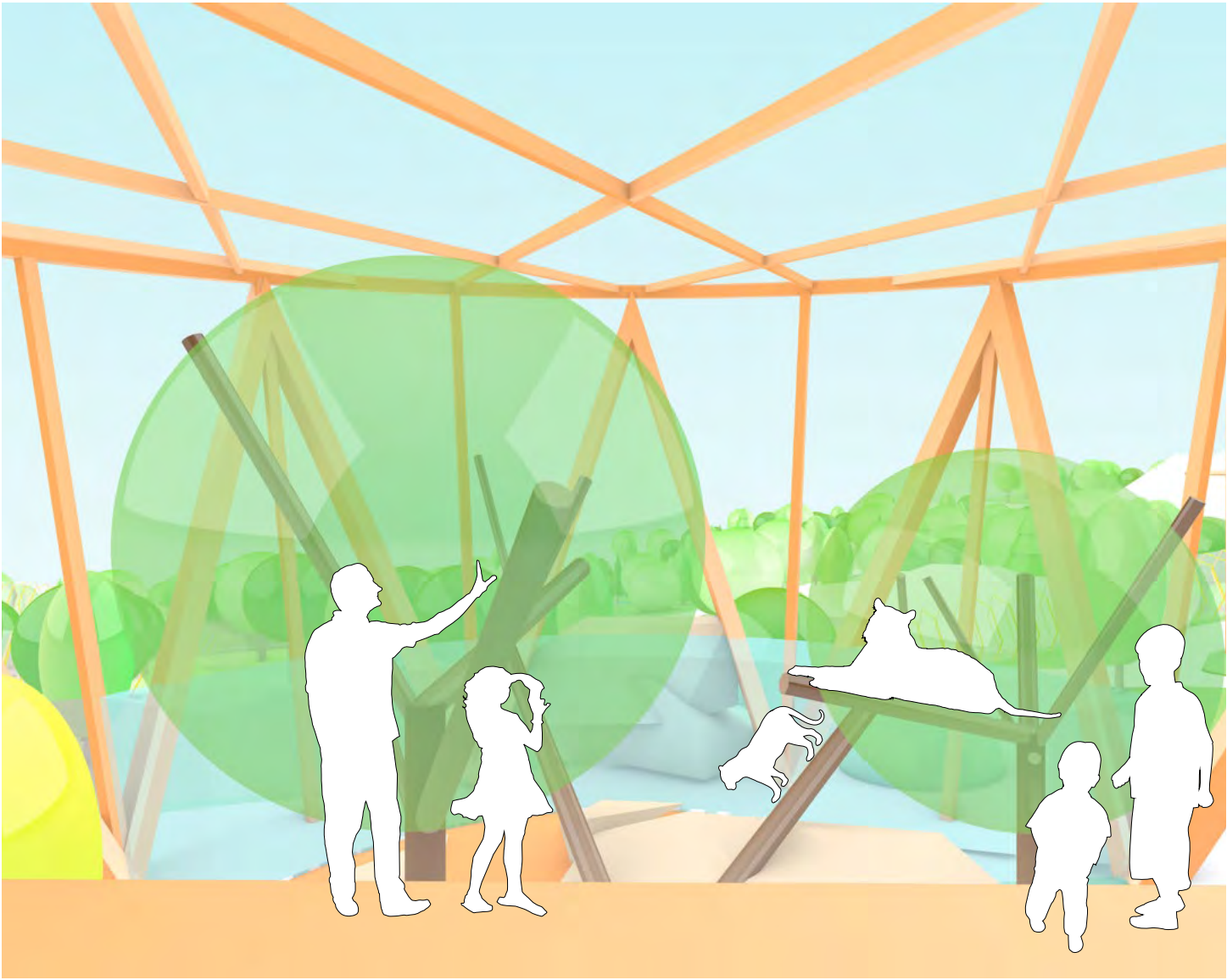
5. THE NEW MASTER PLAN

5.3. CAPITAL PROJECTS: THE TIGERLINE, SUMATRAN TIGER HABITAT EXPANSION

The Tigerline creates a unique opportunity for guests, as well as tigers, right near the entry to Your Zoo. Here, Sumatran tigers are able to move from their existing habitat embedded in the ravine across to a new, larger habitat, offering them choice and enrichment opportunities as they explore their expansive spaces. Guests experience tigers moving overhead as they walk on the path below the Tigerline, and are able to have eye-to-eye experiences as tigers lounge higher up in the branches of their habitat space, with an upper-level viewing area inside their new winter holding, with access right from the Conservation Campus. The new habitat and holding, combined with 360 tubes, allow guests to see tigers in a number of different environments, and from different perspectives, and allow tigers to really roam and explore, providing them with varied and enriching experiences.



View A: view walking towards the new indoor viewing and holding building, with tigers exploring overhead



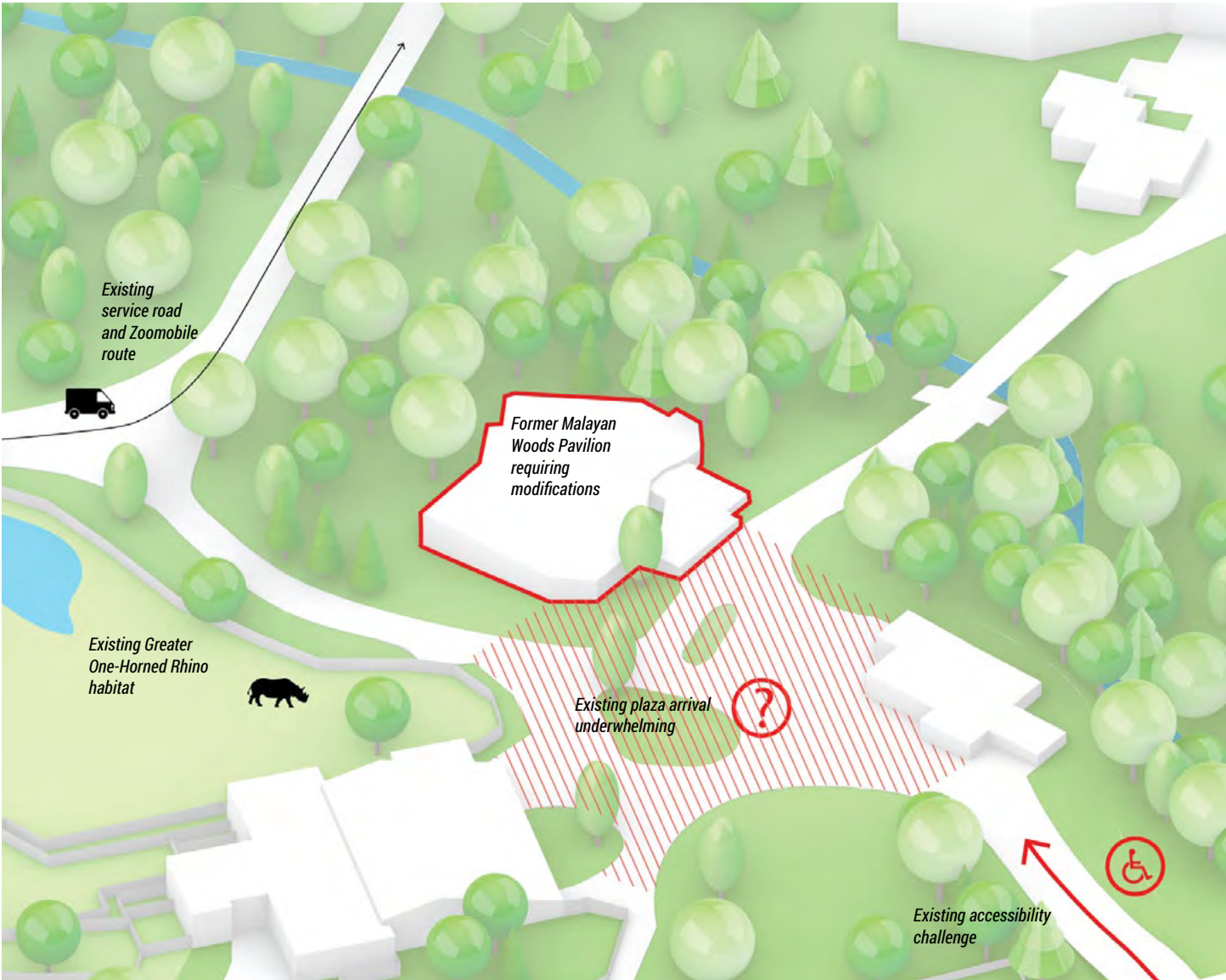
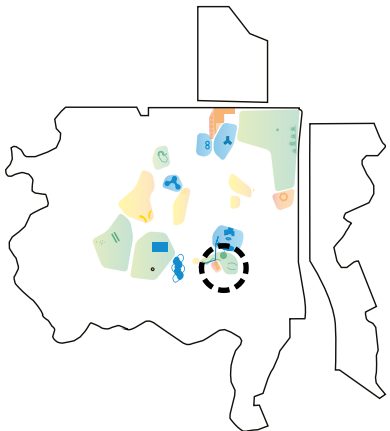
View B: eye-to-eye views of tigers lounging on branches, in the upper viewing level of the indoor holding

5. THE NEW MASTER PLAN

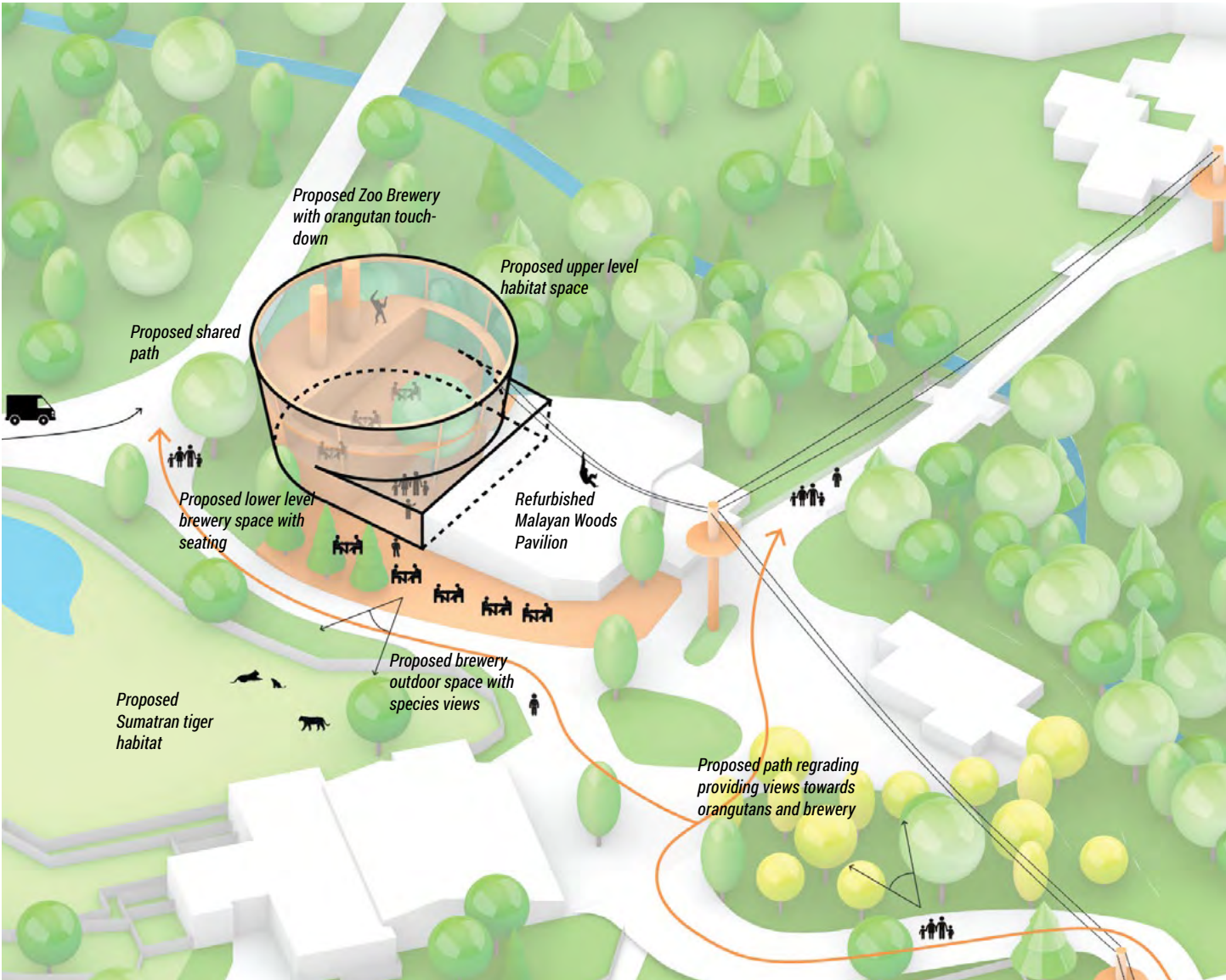
5.3. CAPITAL PROJECTS: ZOO BREWERY (PARTNERSHIP PROJECT)

Upon entering Your Zoo today, the first left that guests take is down a steep grade, into a plaza that has small landscaped pockets but is underwhelming. The former Malayan Woods Pavilion in this plaza - while an interesting building - is in need of significant upgrades. The opportunity exists to refurbish Malayan Woods, enhancing it for educational programming, and to create a new Zoo Brewery here. Together, these create a venue for guests inviting them to spend more time close to species, with a unique program. With the lower part of the brewery for guests, the upper space is developed as a touch-down space for orangutans. The brewery is close to the path, keeping it away from the sensitive top of slope near the ravine. By having habitat space with a brewery, waste from the brewing process can be used for heat generation in the habitat, with this area becoming a showcase of sustainability. The chance to have a conservation mission-supporting beer creates a unique opportunity for potential partners, and supports Your Zoo beyond the site. Refer to page 110 for a proposed partnership funding roadmap for the Zoo Brewery.

- Preliminary program
- **5 300 sqft existing building refurbishment**
 - **4 030 sqft new building**
 - new building internally stepped, 3 storeys total
 - new building has two-storey brewery production space in back of building, with indoor seating on lower level, habitat in upper two-thirds (building is roughly 50% brewery, 50% habitat space)
 - **3 500 sqft plaza**



Existing

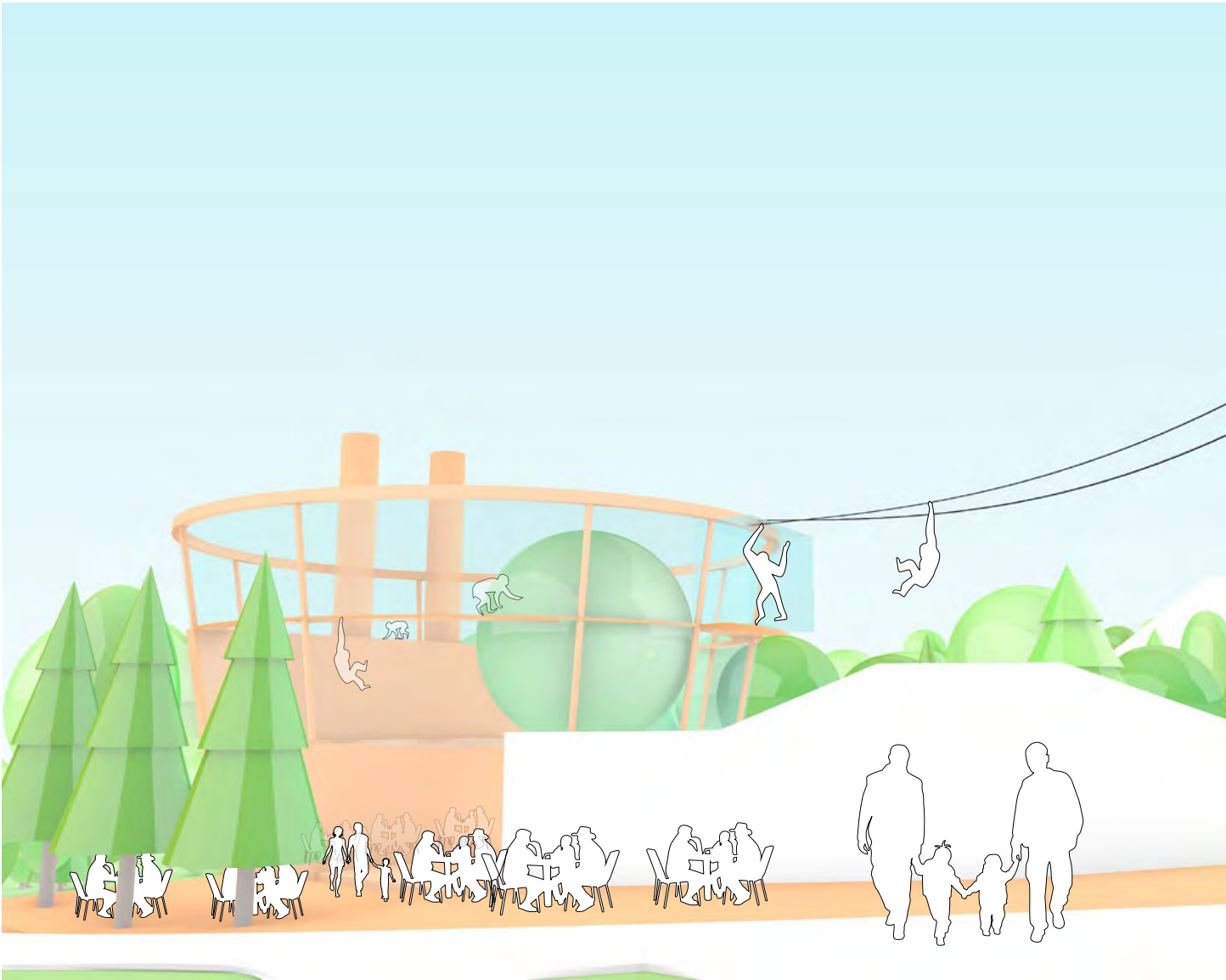
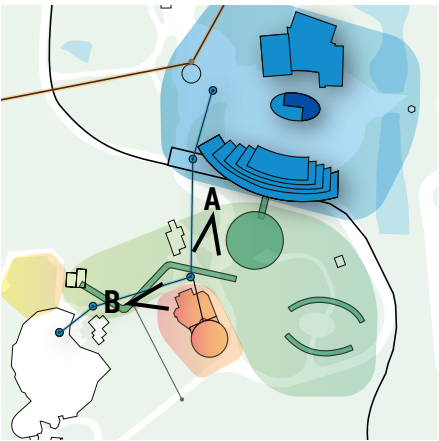


Proposal

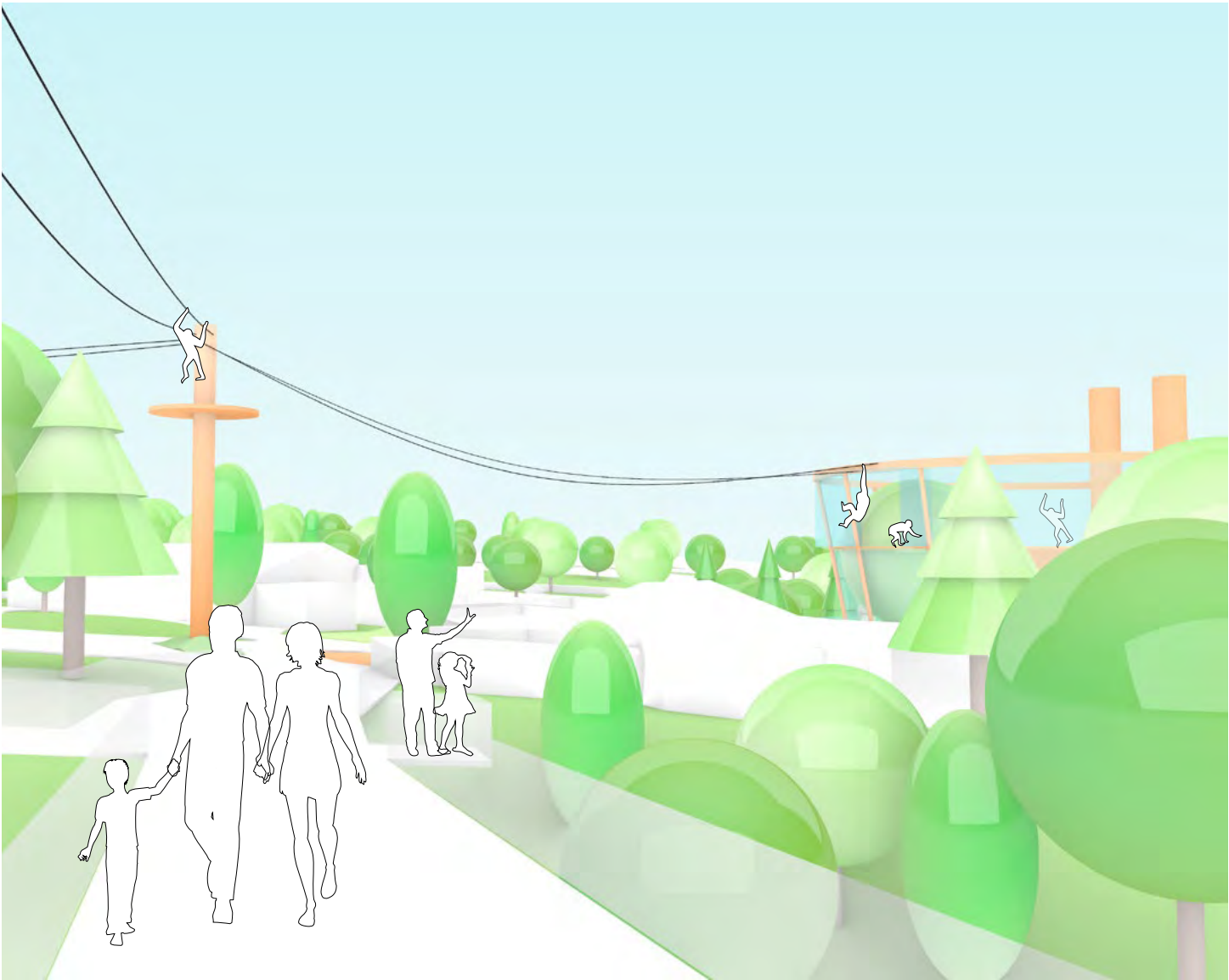
5. THE NEW MASTER PLAN

5.3. CAPITAL PROJECTS: ZOO BREWERY (PARTNERSHIP PROJECT)

Coming from the Zoo entrance, guests catch glimpses of the brewery through the trees and then emerge onto the Indo Plaza with a full view of the brewery and the orangutans that are able to touch down in the upper part of the brewery space. Guests and orangutans are able to spend more time in proximity to each other, watching each other and being enriched by the experience. Arriving from the Indo-Malaya Pavilion provides views directly into the Zoo Brewery as it peeks out from behind the trees, inviting guests to stop in for awhile.



View A: arriving to see the action at the Zoo Brewery with orangutans and guests watching each other



View B: the Zoo Brewery revealed when coming across the ravine from the Indo-Malaya Pavilion