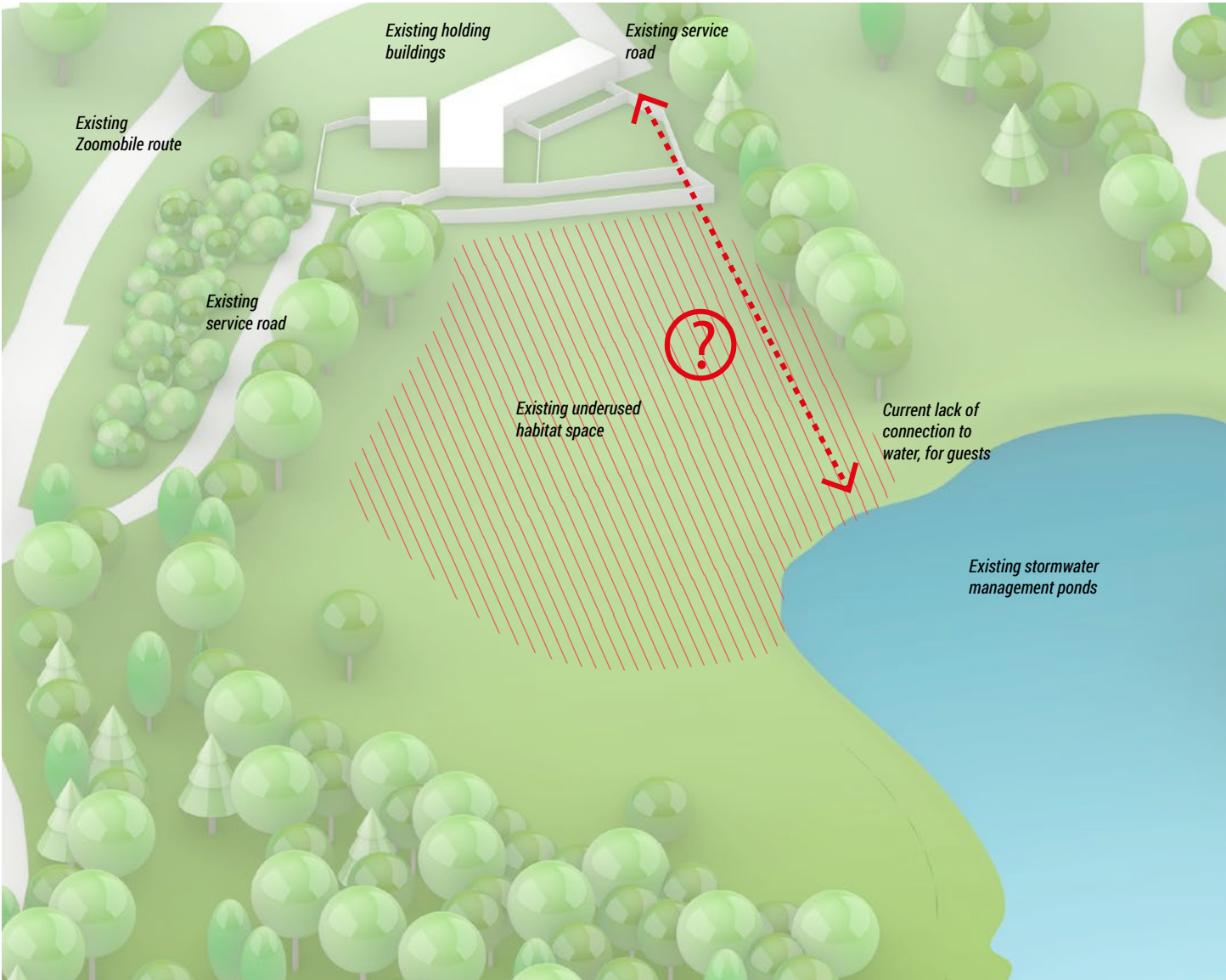
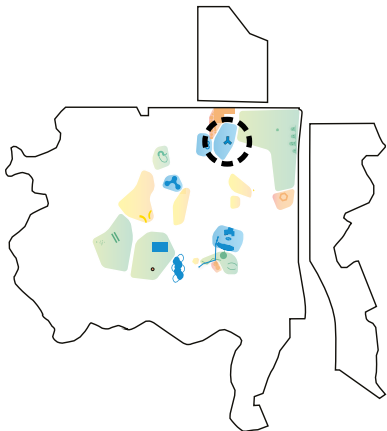


THE NEW MASTER PLAN: THE NEXT TEN YEARS

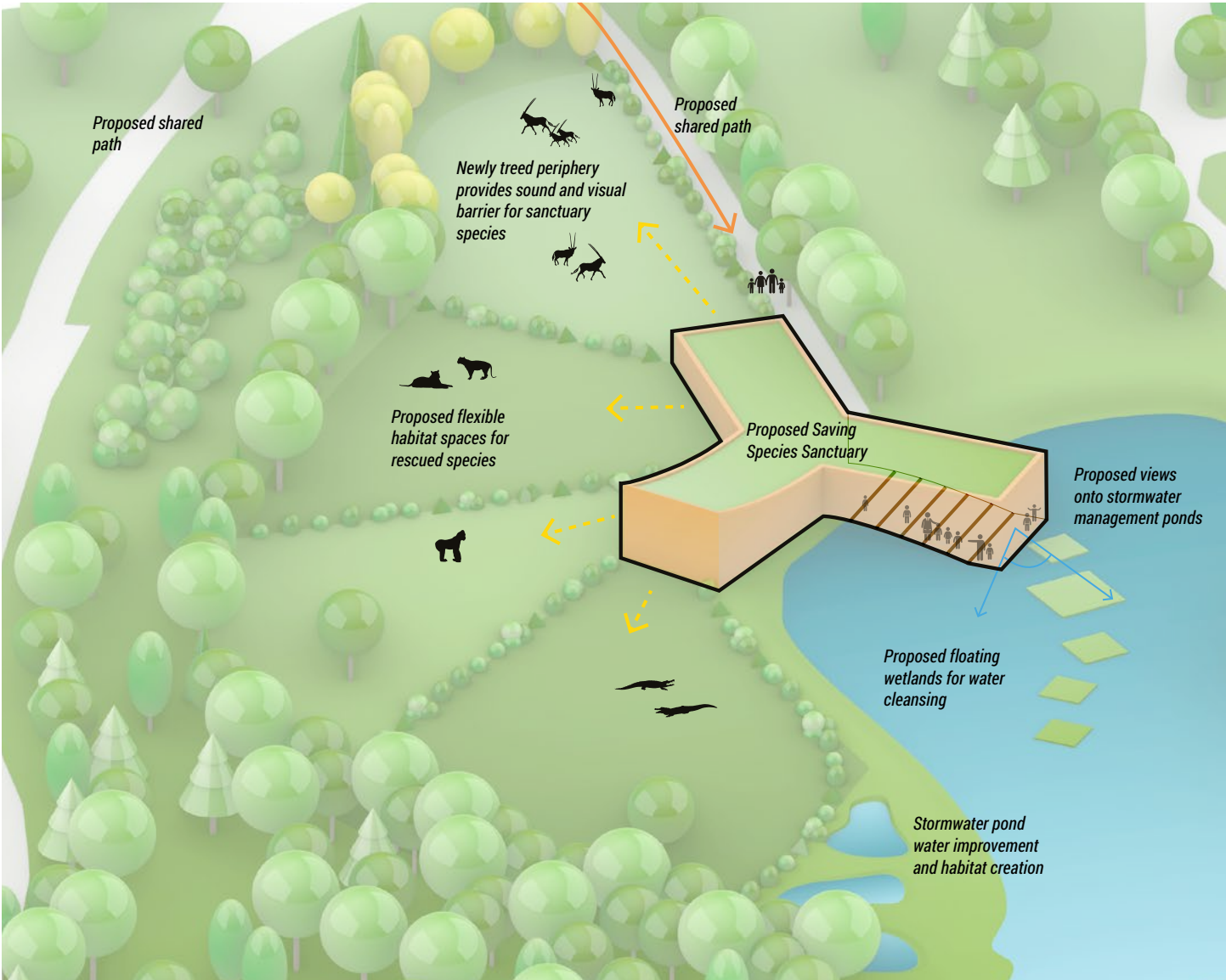
CAPITAL PROJECTS: SAVING SPECIES SANCTUARY

This area east of the Administration complex, at the North of Your Zoo, is currently underused and feels disconnected from the stormwater ponds. This site presents a real opportunity to become a sanctuary for saving exotic rescued animals that are confiscated from smuggling or illegal ownership. Building massing includes three wings, two of which have elevated ceilings including one of the wings serving as a quarantine space able to accommodate different species' needs, that also connects to flexible outdoor habitat spaces. Proximity to the Northern entry to Your Zoo, as well as to the Wildlife Health Centre, makes this an ideal location for this program. The building becomes partially open to the public, with views onto the stormwater ponds demonstrating new technologies used to improve water quality while creating habitat for native species. The sanctuary will be built as a partnership with government funding and donors, demonstrating Your Zoo's commitment as a conservation leader for species in peril locally and globally.

- Preliminary program**
- **6 460 sqft building** - one floor
 - separate quarantine and holding spaces
 - 2 wings double-height
 - all wings insulated for year-round use



Existing

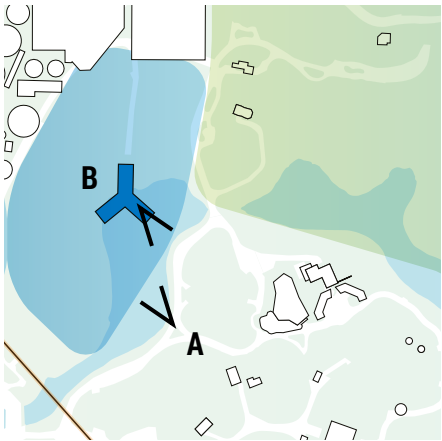


Proposal

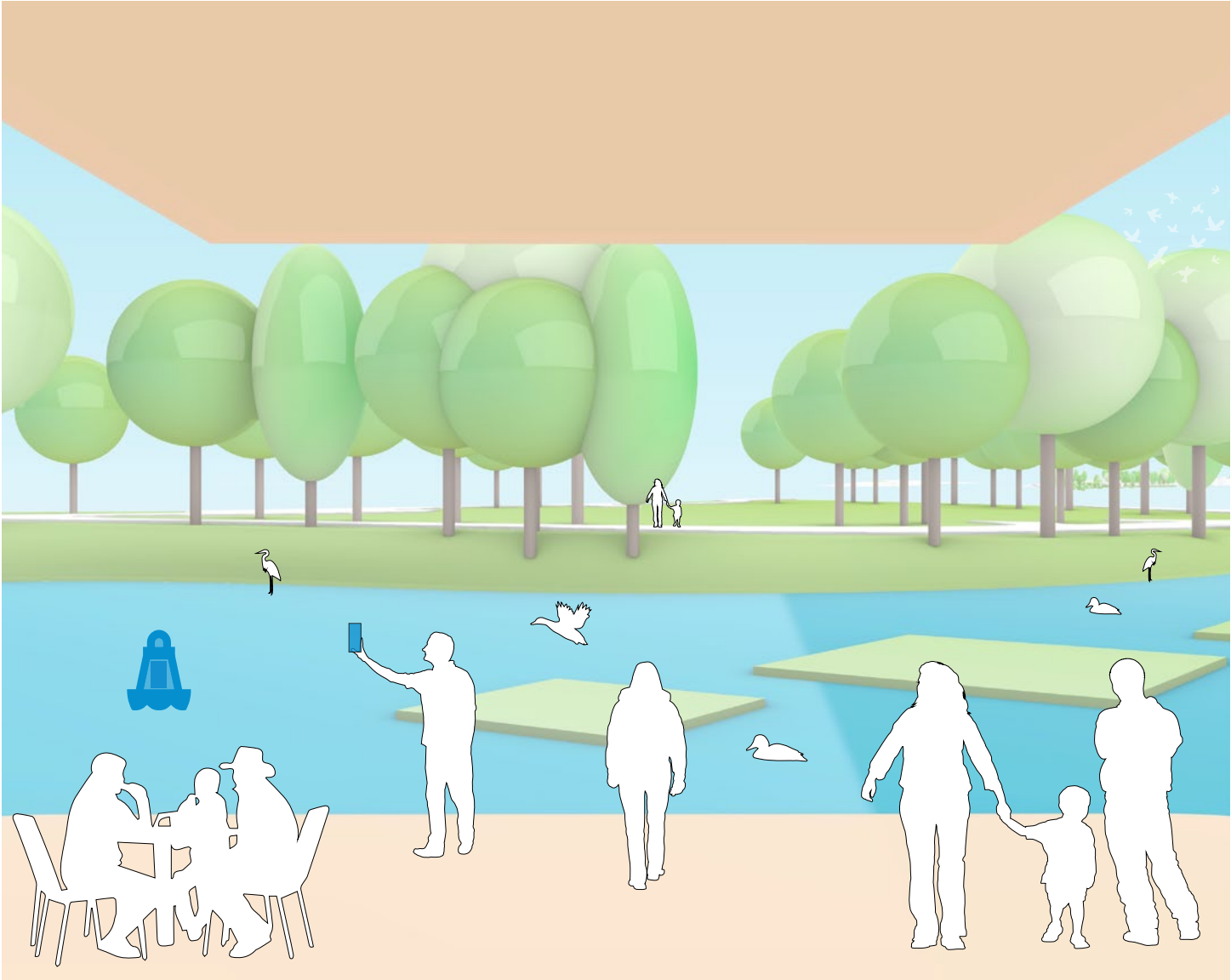
THE NEW MASTER PLAN: THE NEXT TEN YEARS

CAPITAL PROJECTS: SAVING SPECIES SANCTUARY

Views from Eurasia allow guests to view some species at the Sanctuary from afar, even when the sanctuary itself may be closed to guests if animals need more tranquility. Views from within one wing of the sanctuary, looking out over the stormwater ponds, demonstrate the work that is happening onsite to improve existing conditions for local flora and fauna, inviting more native species to thrive and call Your Toronto Zoo home.



View A: view from Eurasia towards the sanctuary



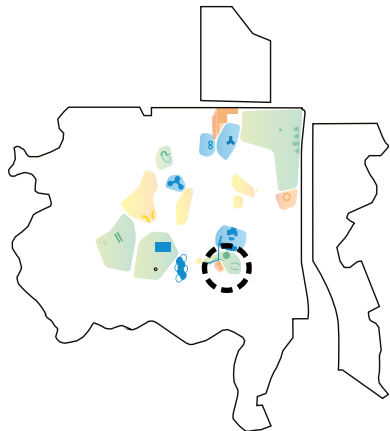
View B: from within the sanctuary, looking onto the stormwater ponds with floating wetlands

THE NEW MASTER PLAN

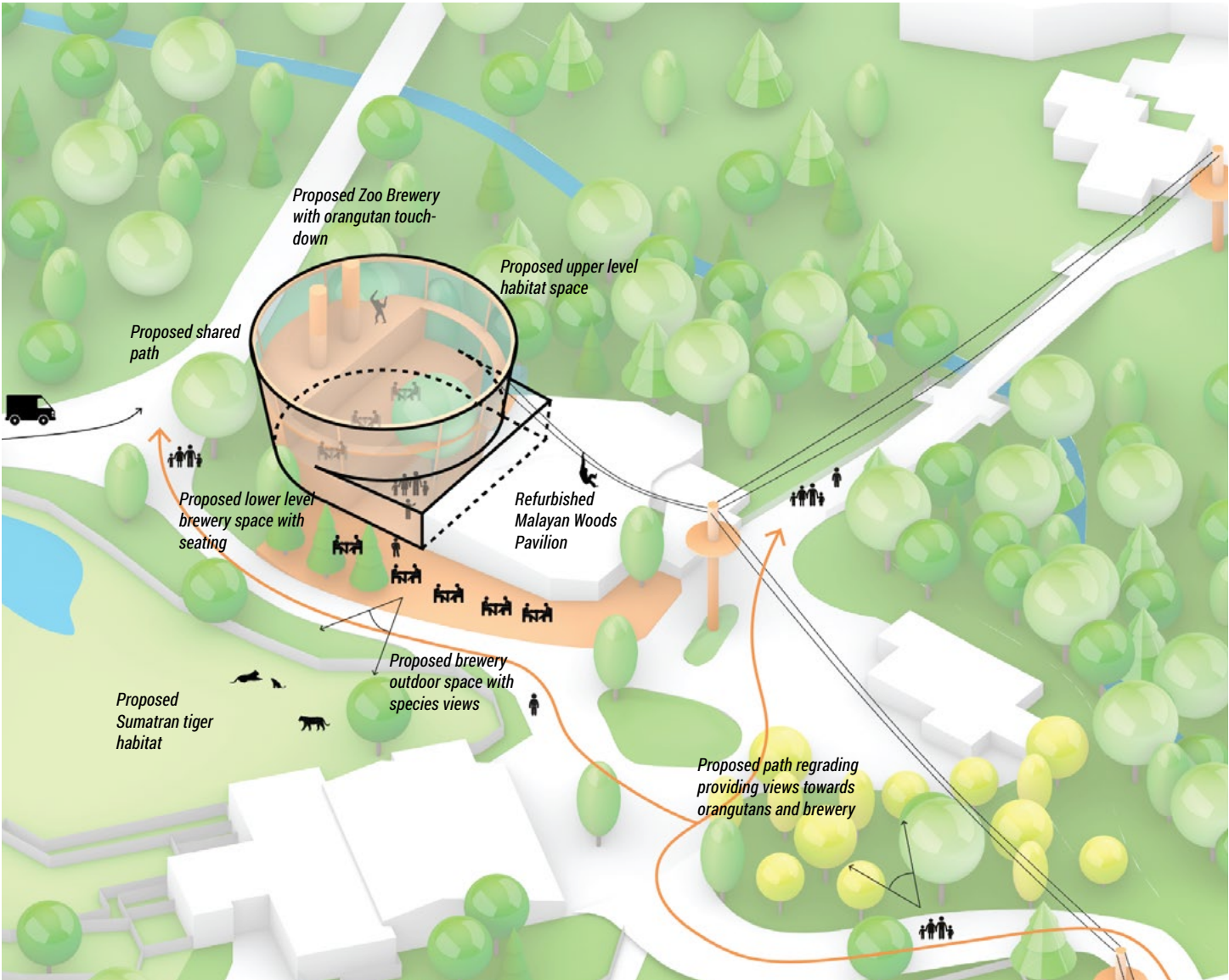
CAPITAL PROJECTS: ZOO BREWERY (PARTNERSHIP PROJECT)

Upon entering Your Zoo today, the first left that guests take is down a steep grade, into a plaza that has small landscaped pockets but is underwhelming. The former Malayan Woods Pavilion in this plaza - while an interesting building - is in need of significant upgrades. The opportunity exists to refurbish Malayan Woods, enhancing it for educational programming, and to create a new Zoo Brewery here. Together, these create a venue for guests inviting them to spend more time close to species, with a unique program. With the lower part of the brewery for guests, the upper space is developed as a touch-down space for orangutans. The brewery is close to the path, keeping it away from the sensitive top of slope near the ravine. By having habitat space with a brewery, waste from the brewing process can be used for heat generation in the habitat, with this area becoming a showcase of sustainability. The chance to have a conservation mission-supporting beer creates a unique opportunity for potential partners, and supports Your Zoo beyond the site. Refer to page 110 for a proposed partnership funding roadmap for the Zoo Brewery.

- Preliminary program
- **5 300 sqft existing building refurbishment**
 - **4 030 sqft new building**
 - new building internally stepped, 3 storeys total
 - new building has two-storey brewery production space in back of building, with indoor seating on lower level, habitat in upper two-thirds (building is roughly 50% brewery, 50% habitat space)
 - **3 500 sqft plaza**



Existing



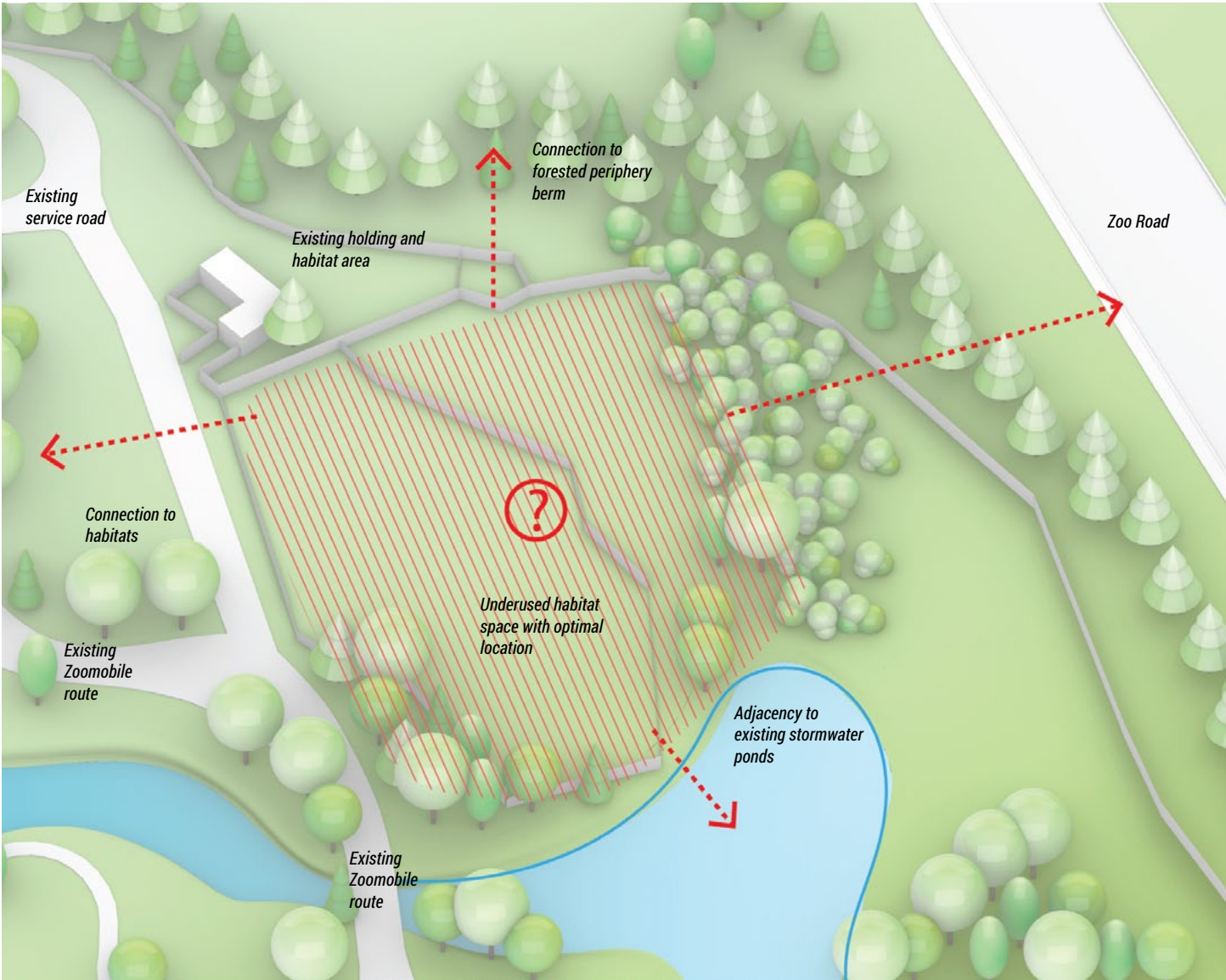
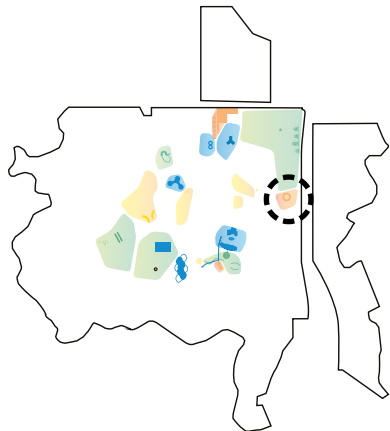
Proposal

THE NEW MASTER PLAN

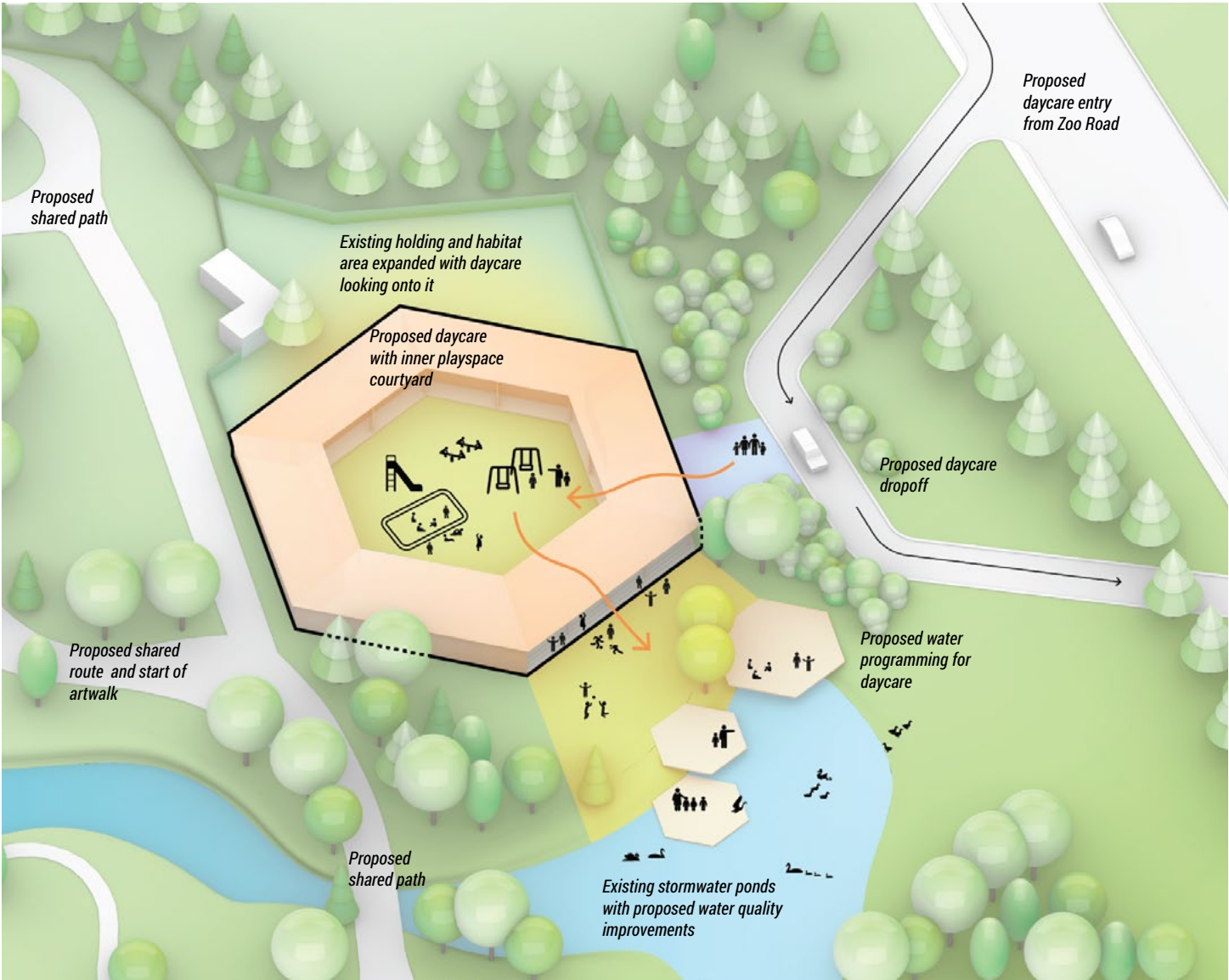
CAPITAL PROJECTS: THE DAYCARE (PARTNERSHIP PROJECT)

This corner of Your Zoo, just Northeast of Parking Lot 1 and the entry gates, has a great connection to the stormwater pond, with lush vegetation, as well as great proximity to the Kids Zoo. Habitat space here is small and underwhelming and this corner of the site is adjacent to Meadowvale Road and Zoo Road but does not connect to either. This presents a fantastic opportunity for the location of a daycare that offers incredible educational opportunities with connections to species on site, and easy access with a new connection created from Zoo Road. The Daycare occupies a space that can be public, as it sits near the periphery of Your Zoo, and offers a program that can serve both Zoo staff and the broader community. Low building massing with an inner courtyard and multiple external connections to this courtyard allows the daycare program to remain contained when it needs to, but also to spill out and be very much connected to its surroundings, including the habitats and ponds adjacent to it. Refer to page 109 for a proposed partnership funding roadmap for the Daycare project.

- Preliminary program
- **5 260 sqft building total**
 - includes 1180 sqft/daycare unit x 4 units, + 540 sqft nap room
 - single level
 - **6 100 sqft outdoor play yard** - in middle of building
 - **2 800 sqft dock total**
 - 3 docks, two at 700 sqft each, one at 1 400sqft



Existing



Proposal

THE NEW MASTER PLAN
THE DAYCARE, MANY SPECIES GROWING TOGETHER



THE NEW MASTER PLAN

CAPITAL PROJECTS TIMELINE: PHASING

With many competing interests onsite, as well as many opportunities for exciting redevelopment, it becomes important to develop criteria for phasing projects in a strategic manner. A list of seven main indicators were developed to serve this purpose. The indicators, listed below, work collectively to allow for a holistic approach to site redevelopment, maximizing how projects can address site challenges while building off of one another in a way that fosters synergies and ensures project success from the start, as well as securing financial stability in the long-term. Your Toronto Zoo will continue to pursue innovative sources of funding for capital projects including public/private partnership opportunities in order to complete some projects contained in the Master Plan sooner than planned.

	CAPITAL PROJECTS	DESCRIPTIONS	PP	OP	RG	1-10 YEAR PLAN - \$148 MILLION TOTAL	11-20 YEAR PLAN
						Funding through City of Toronto, Wildlife Conservancy and other fundraising initiatives	Funding to be determined based on project progress through the first 10 years
HEAVY LIFTERS	The Conservation Campus	Multi-purpose event and education space with new entrance gate and welcome plaza. Phase 1: North building, otter habitat; Phase 2 South building - research facilities, partnership opportunity for hotel, conference/event space, theatre with views of orangutan line and plaza					
	New Indoor Winter Viewing and Holding (African Savanna)	Flexible animal winter viewing and holding area with year-round event space					
	The Saving Species Sanctuary	New flexible and multi-purpose holding spaces for rescued/confiscated/seized animals with access to outdoor habitats and limited guest viewing opportunities (externally funded)					
	Nutrition Centre and Restaurant	Relocation and development of new Nutrition Centre with integration of hydroponic facilities, combined dining experience with a guest educational/demonstration area					
	African Rainforest Pavilion's Redevelopment	Creation of Gorilland offering exciting 360 trail opportunities for both gorillas and guests					
	Americas Pavilion Redevelopment	Americas Pavilion expansion addresses AODA compliance issues, creates better connection between indoor and outdoor spaces and creates expanded exhibits					
MIGHTIES	The Winter Zoo	Introduction of a "highly programmed" visitor loop in African Savanna that provides a broad range of winter activities					
	Jaguar Habitat Expansion	Phase 1: resolve accessibility issues by re-routing existing pathway Phase 2: introduce 360 habitat connection from the existing habitat Phase 3: new jaguar home with habitat expansion					
	Tigerline Sumatran Tiger Habitat Expansion With Holding	Phase 1: resolve accessibility issues by re-routing existing pathway Phase 2: 360 habitat connection across ravine; Phase 3; new tiger home with habitat expansion					
	Wilderness North + Artwalk	Relocation of Canadian species to the Northeastern corner of the site incorporating yurts for overnight stays and a new artwalk					
	The Safari Meander	Expanded habitats with land bridge and rotating species in time-share as well as high-tech interpretive tunnel					
LOW HANGING FRUIT	Amur Tiger Habitat Expansion	Increase existing habitat space by utilizing underused adjacent landscape areas (ongoing project, under 2022 budget)					
	Core Woods Picnic Area	Enhance existing pedestrian pathways and creating new and improved picnic areas					
	Red Panda Climate-Controlled Viewing	Addition of a small, climate-controlled indoor building with viewing area facing into the red panda habitat in the summer					
	Sumatran Tiger Habitat Expansion / Boardwalk	Replacement of existing boardwalk to meet accessibility requirements and expansion of existing Sumatran Tiger habitat					
	Orangutan Indoor Exhibit	Exhibit modification including habitat improvement					
	Hippo House Retrofit	Exhibit modification including habitat improvement					
	Himalayan Tahr Exhibit Improvement	Exhibit modification including habitat improvement					
	The Forage Farm and Café With Demonstration Site	On site vegetable/plant/browse grounds where we grow food for our aniamls seasonally					
SITE INFRASTRUCTURE	Donor Recognition	Identify new and unique opportunities to recognize donors including incorporating into existing exhibits, as well as in some gathering locations and ongoing as new projects occur					
	Fleet of Cargo Bikes	Shared bikes available to staff for goods distribution on site, including cargo and E-bikes and trikes					
	Landscape Destinations and Horticultural Displays	Enhance the Zoo horticultural landscape by increasing the planted areas with seasonal/themed floral displays throughout the site					
	Tech Nodes At Decision-Making Points	Hubs for interpretation and wayfinding including wifi and technological interpretive displays at key intersections around the site					
	Stormwater Ponds Network	Introduce wetlands, cleaning ponds, retention basins, floating wetlands for water improvement, throughout entire network, with educational program opportunities					
PAIN POINTS	Bathrooms Refurbishment	Modifications to washrooms to meet AODA legislation and make the Zoo more accessible to all guests					
	AODA Adaptation of Twiga-Africa Restaurant Path	Regrading of path to meet AODA legislation					
	AODA Adaptation of America-Africa Restaurant Path	Regrading of path to meet AODA legislation					
	AODA adaptation of Lot 2 Parking Path	Regrading of path to meet AODA legislation					
EXTERNALLY FUNDED	Daycare	New pre-school facility embedded into the Zoo site with direct access off Zoo Road					
	Conservation Reserach Centre and Hotel	Hotel/research centre and transportation hub developed with external partners offering on site stays at Your Zoo with views into adjacent species habitats, supporting the Zoo's mission					
	Maglev Monorail	Maglev monorail, moving guests around the site and into the valley providing access and additional viewing opportunities; if not viable, considered as an elevated trail					
	Biodigester	Partnership opportunity for processing of community waste; extensive educational and climate change component; opportunity for synergies with Nutrition Centre and Restaurant, Farm					
	Zoo Brewery	Partnership opportunity to create an onsite brewery with shared revenue opportunity and unique event space					
	Gondola	Scenic overhead ride that moves guests around our site providing a birds eye view into various animal habitats					
	Viewing Tower	Nestled in the heart of African Savanna view our African Savanna species from an elevated tower experience					

Legend

- PP: Project addressing pain points/problem areas
- OP: Project takes advantage of an existing site opportunity beyond solving a problem
- RG: Revenue-generating projects
- Project announcement, building momentum towards groundbreaking
- Project inauguration
- Continuous/ongoing project (series of smaller, connected projects continually being developped)
- Project construction timeline

	INDICATORS (prioritized):	PROJECT EXAMPLES:	REASONS:
1	Addressing AODA requirements by 2025	Indo-Malayan bridge & plaza	Accessibility and welcoming everyone
2	Front-loading projects addressing the main painpoints	Winter holding	Improving animal welfare and guest experience as a priority
3	Front-loading revenue generating hot spots	Winter indoor holding or conservation campus	Extend operating hours and the season and improve financial viability
4	Launching back-bone projects	Ponds network	Starting today to implement projects attached to it
5	Spreading capital investments evenly over time	Balance Heavy Lifters, Mighties and Low-hanging Fruit	To manage the 10 year Capital Works Program
6	Aiming for yearly project announcements and inaugurations		Celebrating accomplishment and new offerings regularly! Sustaining momentum!
7	Exploiting potential synergies	Nutrition Centre and Restaurant + Biodigester	Gaining maximum impact from each new project and reducing costs
*	Giving the go to a partner coming with a budget and projects	As opportunities are presented	



OUR PATH FORWARD, TOGETHER, WITH YOU,
WITH OUR COMMUNITY, TO MAKE OUR NEW
TORONTO ZOO COME TRUE





THANK YOU, LET'S GET TO WORK!

