

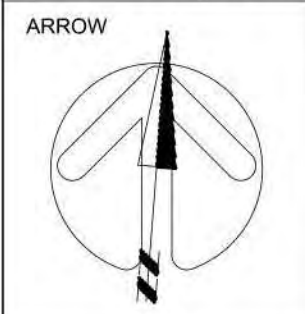
No.	DATE	DESCRIPTION
1	2020/12/17	ISSUED FOR ZBA & SPA
2	2022/11/29	WITHOUT PREJUDICE - SETTLEMENT OPTION



COPYRIGHT:  
Any reproduction or distribution for any purpose other than authorized by IBI Group is forbidden. Written dimensions shall have precedence over scaled dimensions. Contractors shall verify and be responsible for all dimensions and conditions on the job and IBI Group shall be informed of any variations from the dimensions and conditions shown on the drawing. Shop drawings shall be submitted to IBI Group for general confirmation before proceeding with fabrication.

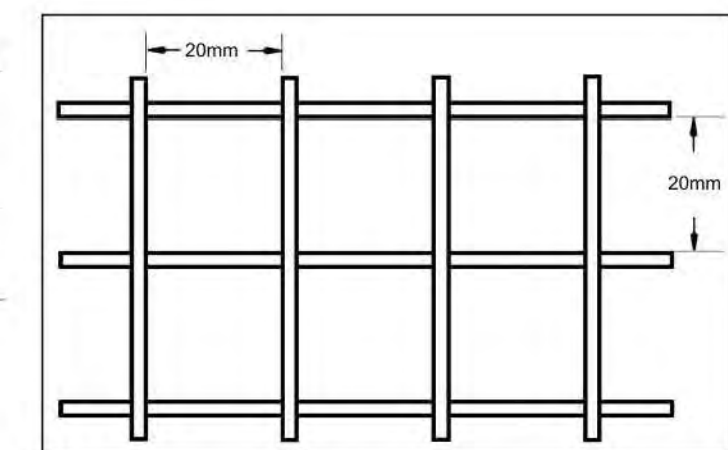
IBI GROUP ARCHITECTS (CANADA) INC.  
is a member of IBI Group of companies

**IBI** GROUP ARCHITECTS (CANADA) INC.  
7TH FLOOR - 55 ST. CLAIR AVE. W.  
TORONTO, ONTARIO M4V 2Y7  
Tel: (416) 596-1930 Fax: (416) 596-0644  
ibigroup.com



PROJECT  
**277 WELLINGTON ST. W.**  
TORONTO, ONTARIO

SHEET TITLE  
**GROUND FLOOR PLAN**



DRAWN BY:	CHKD BY:	DATE:	SCALE:
Author	Checker	2022/11/29	1:100

PROJECT NO: 125033 DWG NO: A1.05

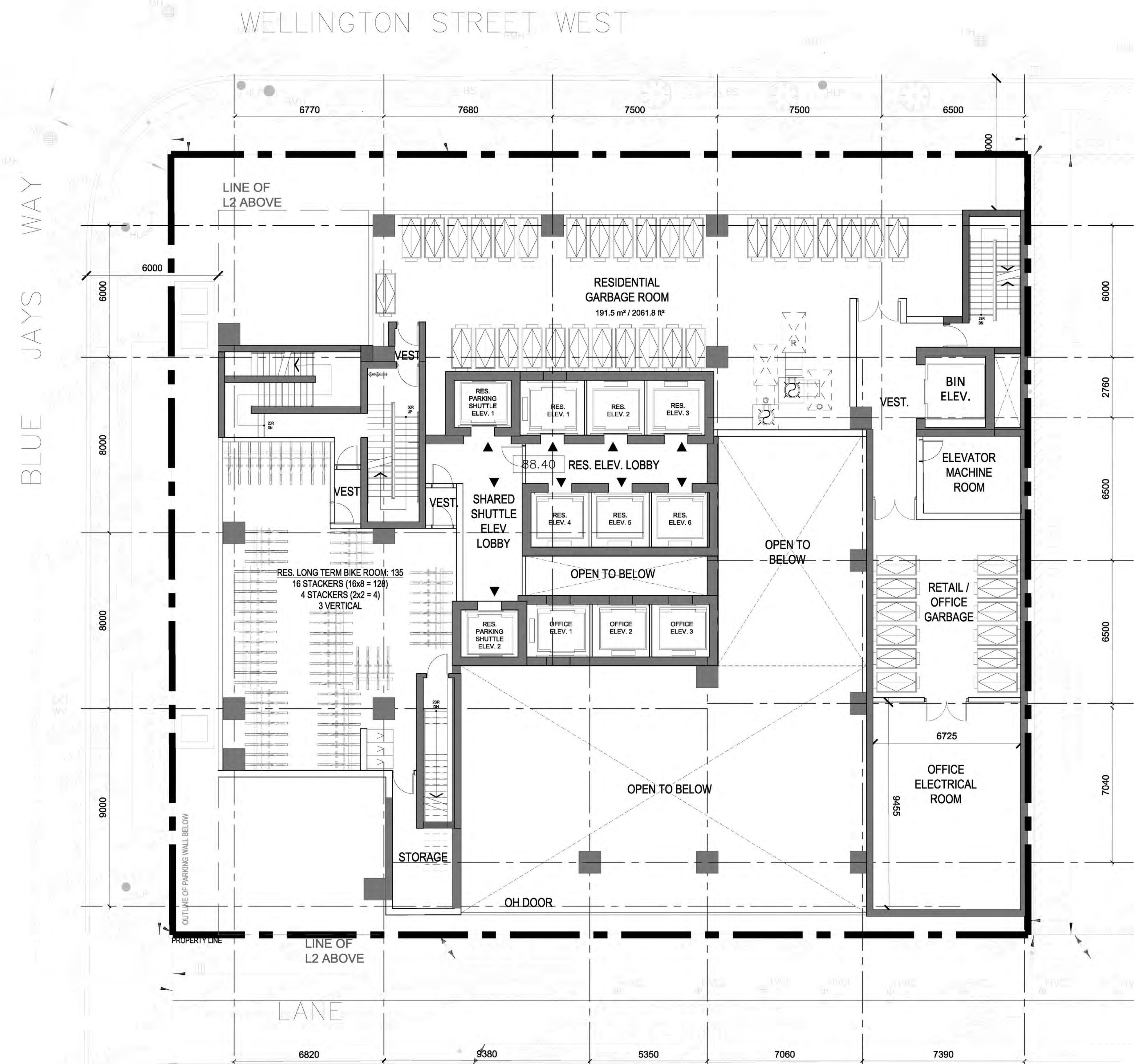
CLIENT

THE RW COMMERCIAL  
PROPERTIES CORPORATION

110 EGLINTON AVE. E.  
SUITE #500  
TORONTO, ONTARIO  
M4P 2Y1

ISSUED

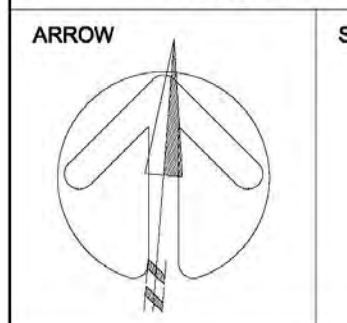
No.	DATE	DESCRIPTION
1	2020/12/17	ISSUED FOR ZBA & SFA
2	2022/11/29	WITHOUT PREJUDICE - SETTLEMENT OPTION



**COPYRIGHT:**  
Any reproduction or distribution for any purpose other than authorized by IBI Group is forbidden. Written dimensions shall have precedence over scaled dimensions. Contractors shall verify and be responsible for all dimensions and conditions on the job and IBI Group shall be advised of any variations from the dimensions and conditions shown on the drawing. Shop drawings shall be submitted to IBI Group for general confirmation before proceeding with fabrication.

**IBI GROUP ARCHITECTS (CANADA) INC.**  
is a member of IBI Group of companies

**IBI** IBI GROUP ARCHITECTS (CANADA) INC.  
7TH FLOOR - 55 ST. CLAIR AVE. W.  
TORONTO, ONTARIO M4V 2Y7  
tel (416) 596-1930 fax (416) 596-0644  
ibigroup.com



**PROJECT**  
277 WELLINGTON ST. W.  
TORONTO, ONTARIO

**SHEET TITLE**  
MEZZANINE FLOOR  
PLAN

**DRAWN BY:** CHKD' BY: DATE: SCALE:  
Author Checker 2022/11/29 1:100

**PROJECT NO:** DWG NO.  
125033 A1.06

CLIENT

THE RW COMMERCIAL  
PROPERTIES CORPORATION

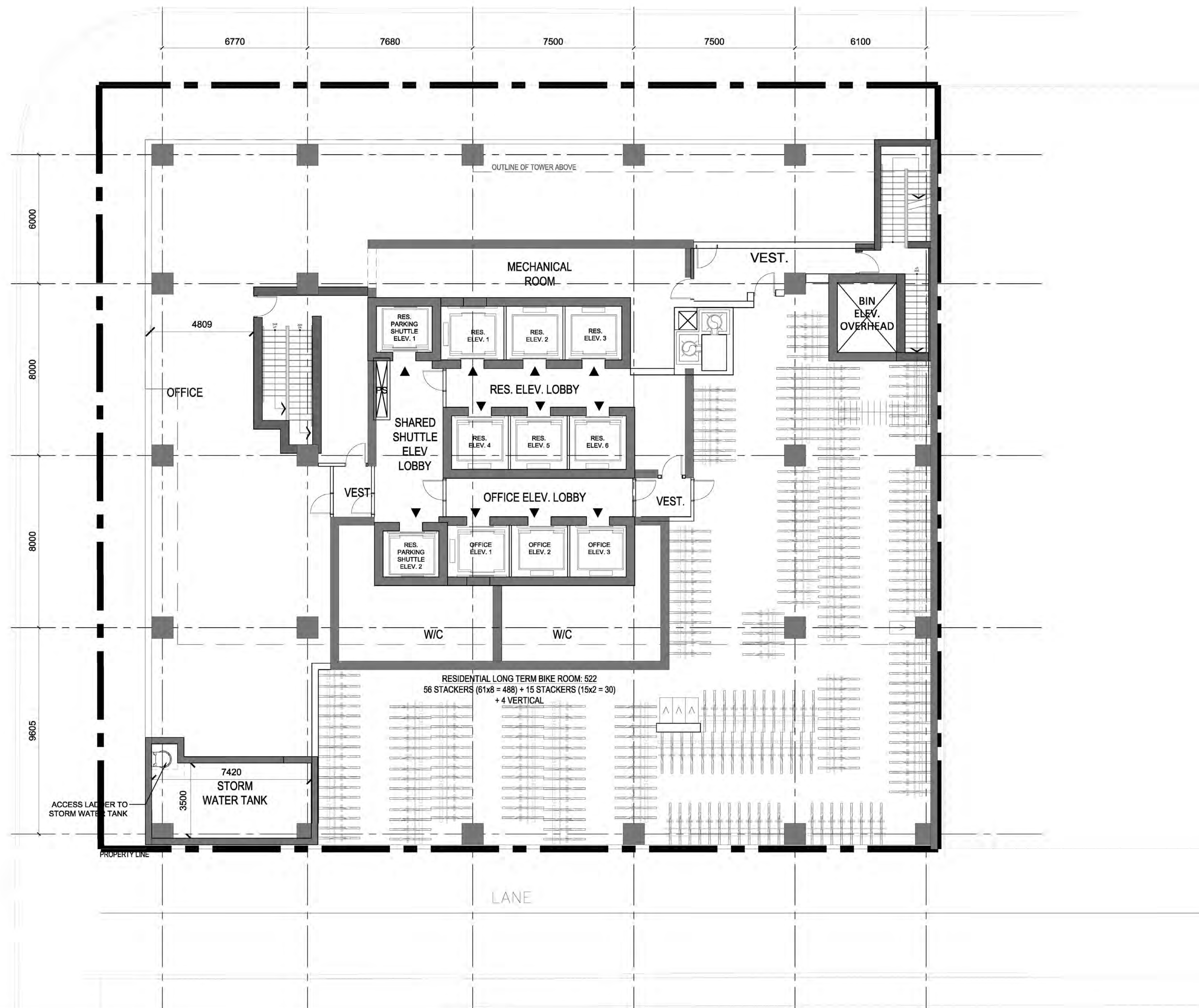
110 EGLINTON AVE. E.  
SUITE #500  
TORONTO, ONTARIO  
M4P 2Y1

ISSUED

No.	DATE	DESCRIPTION
1	2020/12/17	ISSUED FOR ZBA & SPA
2	2022/11/29	WITHOUT PREJUDICE - SETTLEMENT OPTION

WELLINGTON STREET WEST

BLUE JAYS WAY



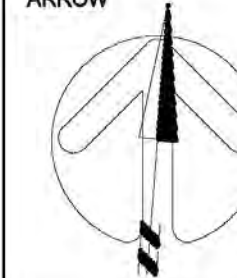
**COPYRIGHT:**  
Any reproduction or distribution for any purpose other than authorized by IBI Group is forbidden. Written dimensions shall have precedence over scaled dimensions. Contractors shall verify and be responsible for all dimensions and conditions on the job and IBI Group shall be advised of any variations from the dimensions and conditions shown on the drawing. Shop drawings shall be submitted to IBI Group for general confirmation before proceeding with fabrication.

IBI GROUP ARCHITECTS (CANADA) INC.  
is a member of IBI Group of companies

**IBI** IBI GROUP ARCHITECTS (CANADA) INC.  
7TH FLOOR - 55 ST. CLAIR AVE. W.  
TORONTO, ONTARIO M4V 2Y7  
tel (416) 596-1930 fax (416) 596-0644  
ibigroup.com

ARROW

SEAL



PROJECT

277 WELLINGTON ST. W.  
TORONTO, ONTARIO

SHEET TITLE

LEVEL 2 FLOOR PLAN

DRAWN BY:	CHKD' BY:	DATE:	SCALE:
Author	Checker	2022/11/29	1:100

PROJECT NO:	DWG NO.
125033	A1.07

CLIENT

THE RW COMMERCIAL  
PROPERTIES CORPORATION

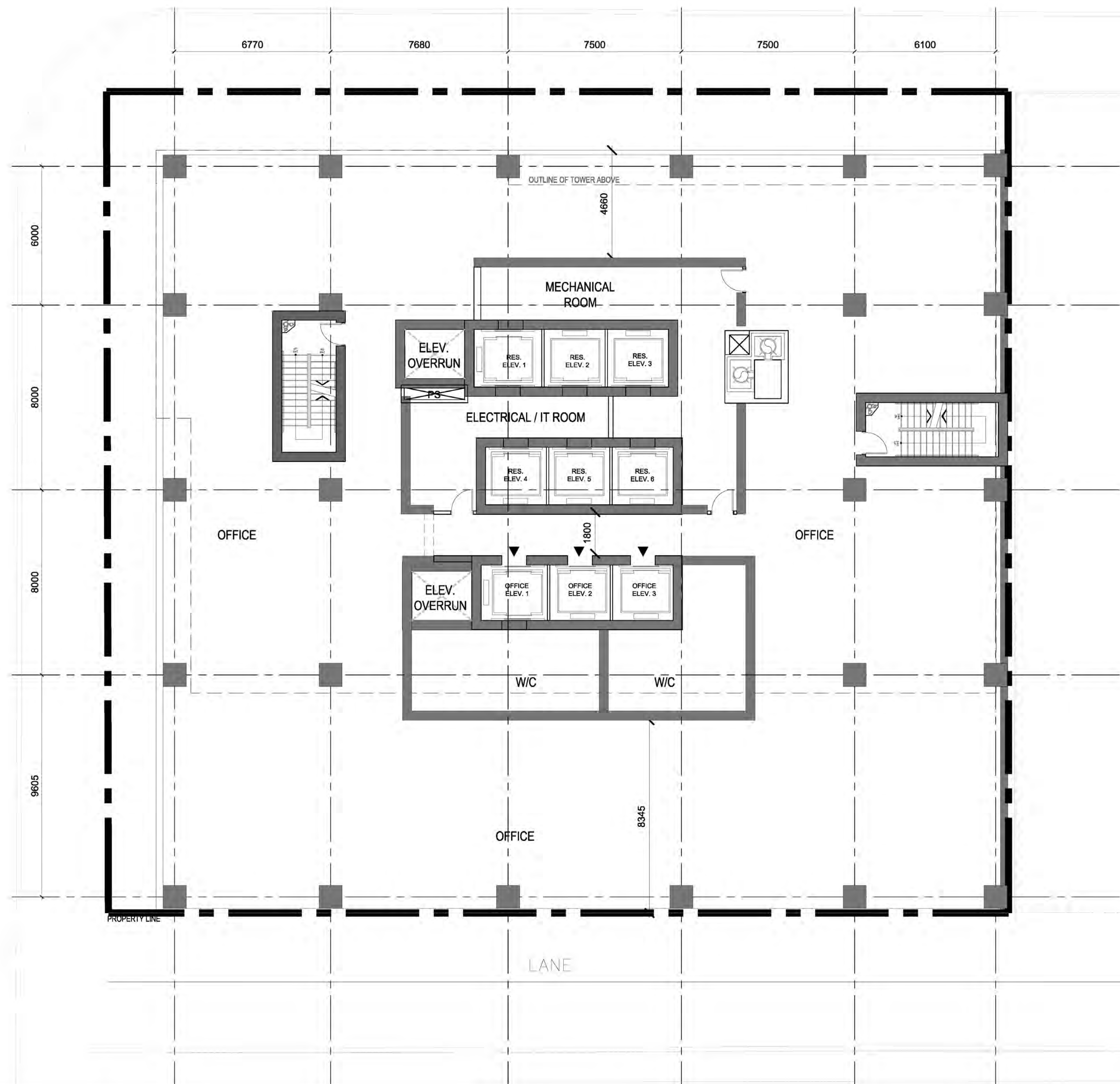
110 EGLINTON AVE. E.  
SUITE #500  
TORONTO, ONTARIO  
M4P 2Y1

ISSUED

No.	DATE	DESCRIPTION
1	2020/12/17	ISSUED FOR ZBA & SPA
2	2022/11/29	WITHOUT PREJUDICE - SETTLEMENT OPTION

WELLINGTON STREET WEST

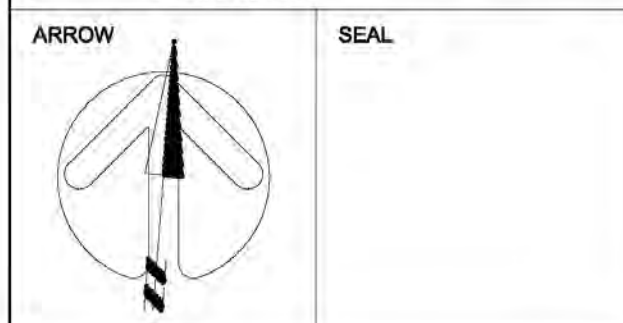
BLUE JAYS WAY



**COPYRIGHT:**  
Any reproduction or distribution for any purpose other than authorized by IBI Group is forbidden. Written dimensions shall have precedence over scaled dimensions. Contractors shall verify and be responsible for all dimensions and conditions on the job and IBI Group shall be relieved of any liability from the dimensions and conditions shown on this drawing. Shop drawings shall be submitted to IBI Group for general confirmation before proceeding with fabrication.

IBI GROUP ARCHITECTS (CANADA) INC.  
is a member of IBI Group of companies

**IBI** IBI GROUP ARCHITECTS (CANADA) INC.  
7TH FLOOR - 55 ST. CLAIR AVE. W.  
TORONTO, ONTARIO M4V 2Y7  
tel (416) 596-1930 fax (416) 596-0644  
ibigroup.com



PROJECT  
**277 WELLINGTON ST. W.**  
TORONTO, ONTARIO

SHEET TITLE  
**LEVEL 3 FLOOR PLAN**

DRAWN BY: CHKD' BY: DATE: SCALE:  
Author Checker 2022/11/29 1:100

PROJECT NO: DWG NO.  
125033 A1.08

CLIENT

THE RW COMMERCIAL  
PROPERTIES CORPORATION

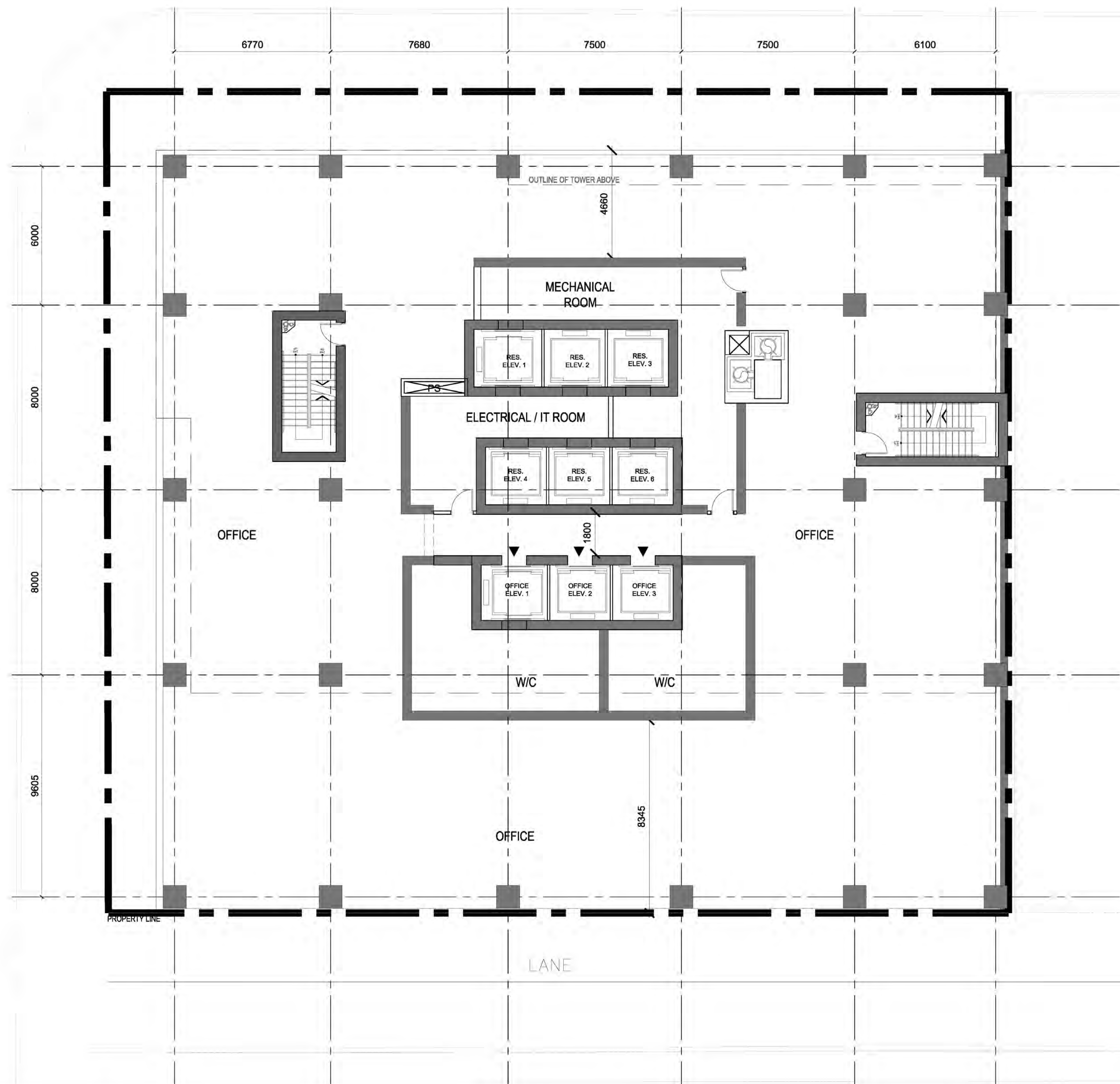
110 EGLINTON AVE. E.  
SUITE #500  
TORONTO, ONTARIO  
M4P 2Y1

ISSUED

No.	DATE	DESCRIPTION
1	2020/12/17	ISSUED FOR ZBA & SPA
2	2022/11/29	WITHOUT PREJUDICE - SETTLEMENT OPTION

BLUE JAYS WAY

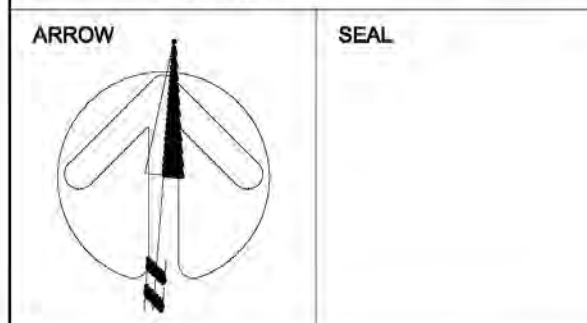
WELLINGTON STREET WEST



**COPYRIGHT:**  
Any reproduction or distribution for any purpose other than authorized by IBI Group is forbidden. Written dimensions shall have precedence over scaled dimensions. Contractors shall verify and be responsible for all dimensions and conditions on the job and IBI Group shall be relieved of any liability from the dimensions and conditions shown on this drawing. Shop drawings shall be submitted to IBI Group for general confirmation before proceeding with fabrication.

**IBI GROUP ARCHITECTS (CANADA) INC.**  
is a member of IBI Group of companies

**IBI**  
IBI GROUP ARCHITECTS (CANADA) INC.  
7TH FLOOR - 55 ST. CLAIR AVE. W.  
TORONTO, ONTARIO M4V 2Y7  
tel (416) 596-1930 fax (416) 596-0644  
ibigroup.com



PROJECT  
**277 WELLINGTON ST. W.**  
TORONTO, ONTARIO

SHEET TITLE  
**LEVEL 4-6 FLOOR PLAN**

DRAWN BY: CHKD' BY: DATE: SCALE:  
Author Checker 2022/11/29 1:100

PROJECT NO: DWG NO.  
125033 A1.09

CLIENT

THE RW COMMERCIAL  
PROPERTIES CORPORATION

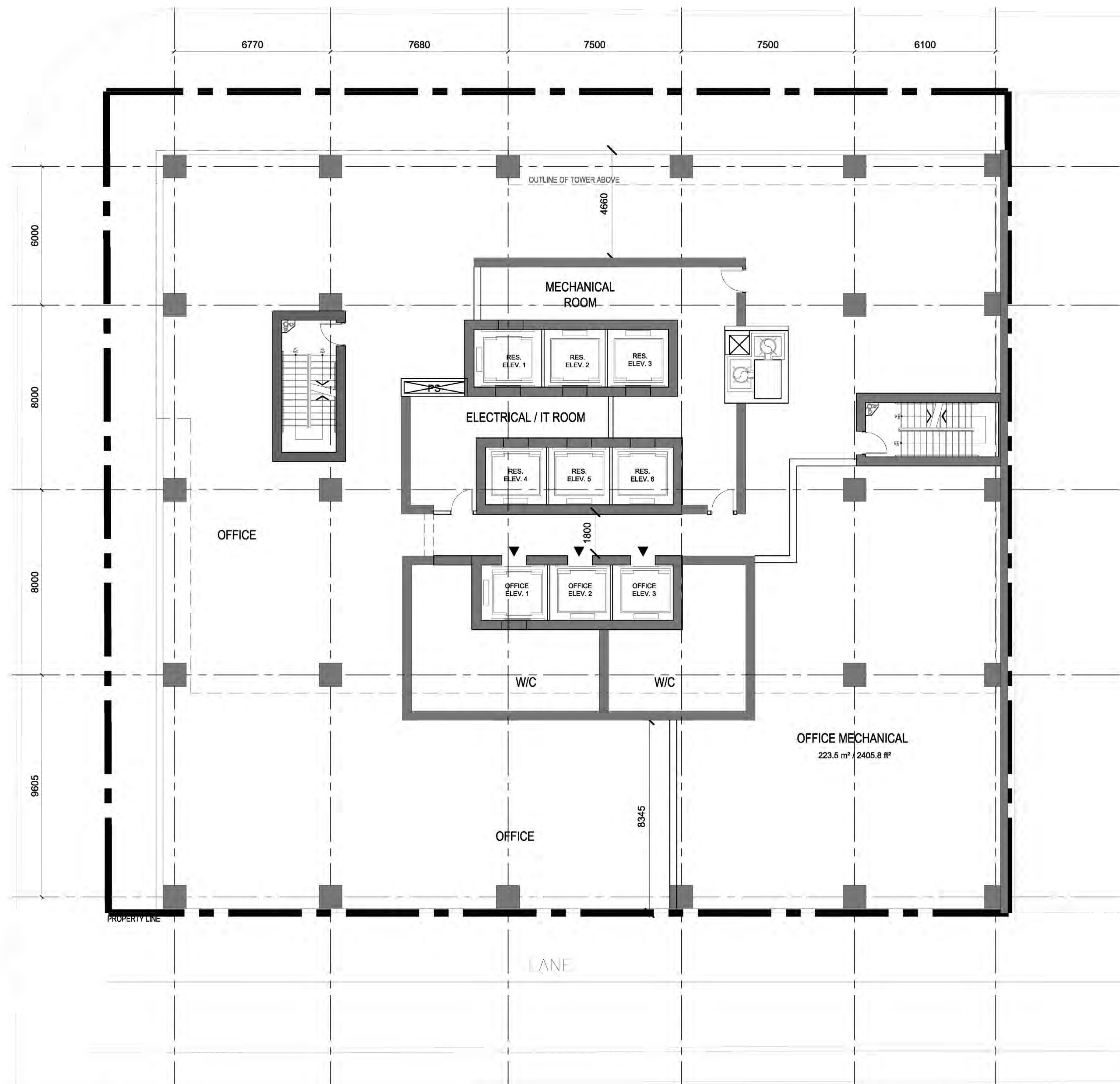
110 EGLINTON AVE. E.  
SUITE #500  
TORONTO, ONTARIO  
M4P 2Y1

ISSUED

No.	DATE	DESCRIPTION
1	2020/12/17	ISSUED FOR ZBA & SPA
2	2022/11/29	WITHOUT PREJUDICE - SETTLEMENT OPTION

WELLINGTON STREET WEST

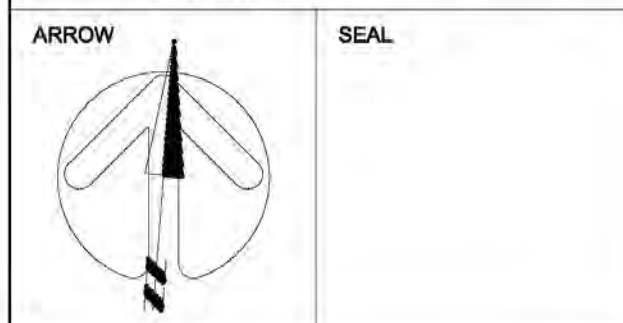
BLUE JAYS WAY



**COPYRIGHT:**  
Any reproduction or distribution for any purpose other than authorized by IBI Group is forbidden. Written dimensions shall have precedence over scaled dimensions. Contractors shall verify and be responsible for all dimensions and conditions on the job and IBI Group shall be relieved of any liability from the dimensions and conditions shown on this drawing. Shop drawings shall be submitted to IBI Group for general confirmation before proceeding with fabrication.

IBI GROUP ARCHITECTS (CANADA) INC.  
is a member of IBI Group of companies

**IBI** IBI GROUP ARCHITECTS (CANADA) INC.  
7TH FLOOR - 55 ST. CLAIR AVE. W.  
TORONTO, ONTARIO M4V 2Y7  
tel (416) 596-1930 fax (416) 596-0644  
ibigroup.com



PROJECT  
**277 WELLINGTON ST. W.**  
TORONTO, ONTARIO

SHEET TITLE  
**LEVEL 7 FLOOR PLAN**

DRAWN BY: CHKD' BY: DATE: SCALE:  
Author Checker 2022/11/29 1:100

PROJECT NO: DWG NO.  
125033 A1.10

CLIENT

THE RW COMMERCIAL  
PROPERTIES CORPORATION

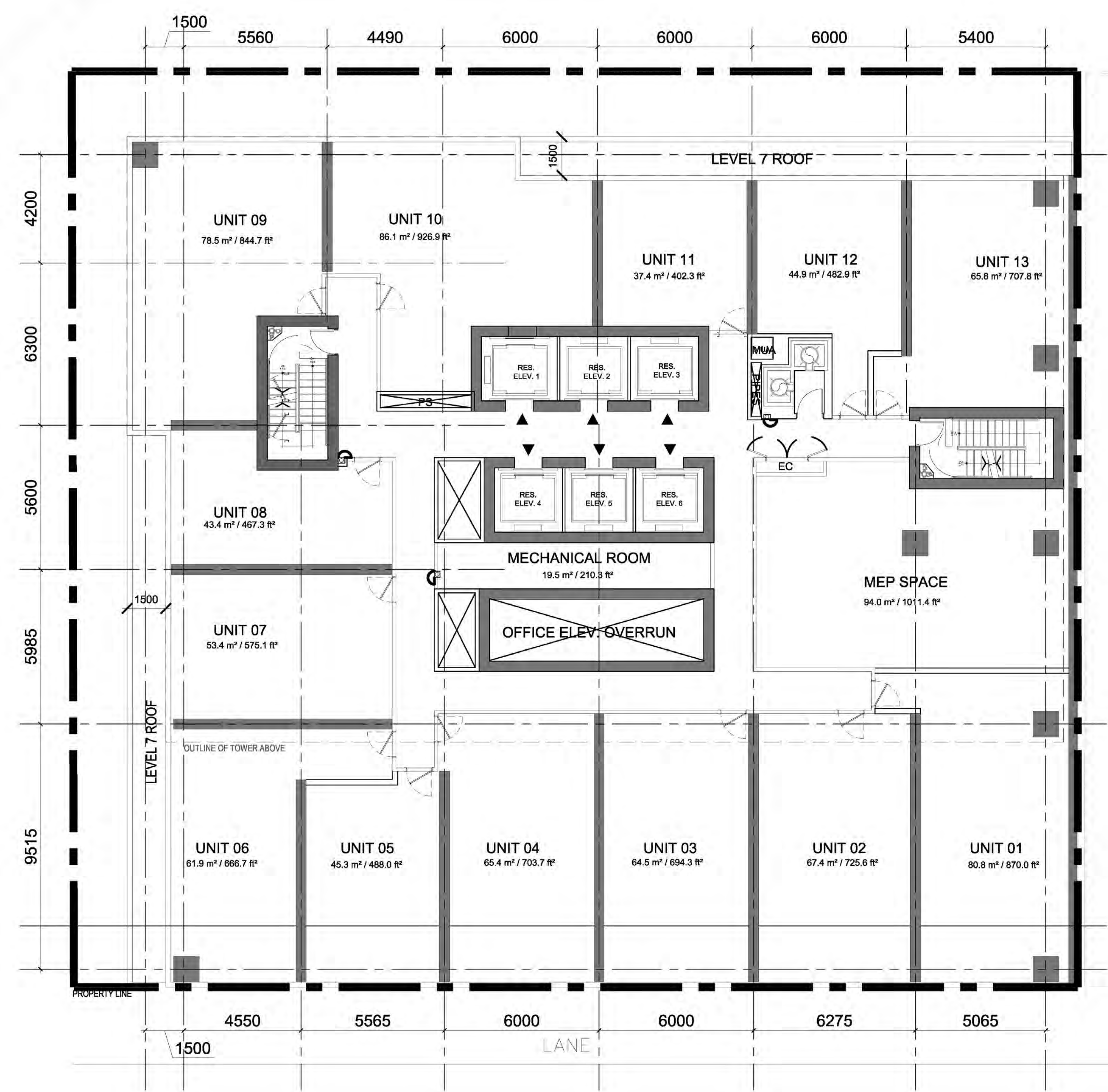
110 EGLINTON AVE. E.  
SUITE #500  
TORONTO, ONTARIO  
M4P 2Y1

ISSUED

No.	DATE	DESCRIPTION
1	2020/12/17	ISSUED FOR ZBA & SPA
2	2022/11/29	WITHOUT PREJUDICE - SETTLEMENT OPTION

WELLINGTON STREET WEST

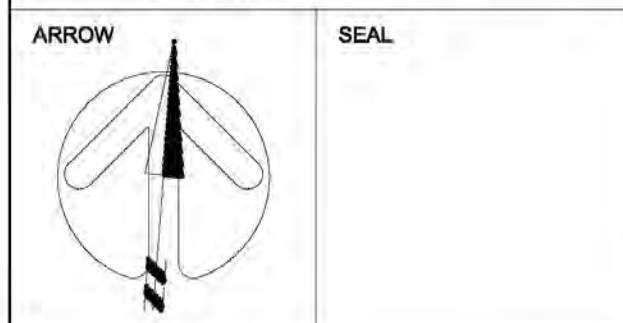
BLUE JAYS WAY



**COPYRIGHT:**  
Any reproduction or distribution for any purpose other than authorized by IBI Group is forbidden. Written dimensions shall have precedence over scaled dimensions. Contractors shall verify and be responsible for all dimensions and conditions on the job and IBI Group shall be relieved of any liability from the dimensions and conditions shown on the drawing. Shop drawings shall be submitted to IBI Group for general confirmation before proceeding with fabrication.

**IBI GROUP ARCHITECTS (CANADA) INC.**  
is a member of IBI Group of companies

**IBI** IBI GROUP ARCHITECTS (CANADA) INC.  
7TH FLOOR - 55 ST. CLAIR AVE. W.  
TORONTO, ONTARIO M4V 2Y7  
tel (416) 596-1930 fax (416) 596-0644  
ibigroup.com



PROJECT  
**277 WELLINGTON ST. W.**  
TORONTO, ONTARIO

SHEET TITLE  
**LEVEL 8-10 FLOOR  
PLAN**

DRAWN BY: CHK'D BY: DATE: SCALE:  
Author Checker 2022/11/29 1:100

PROJECT NO: DWG NO.  
125033 A1.11

CLIENT

THE RW COMMERCIAL  
PROPERTIES CORPORATION

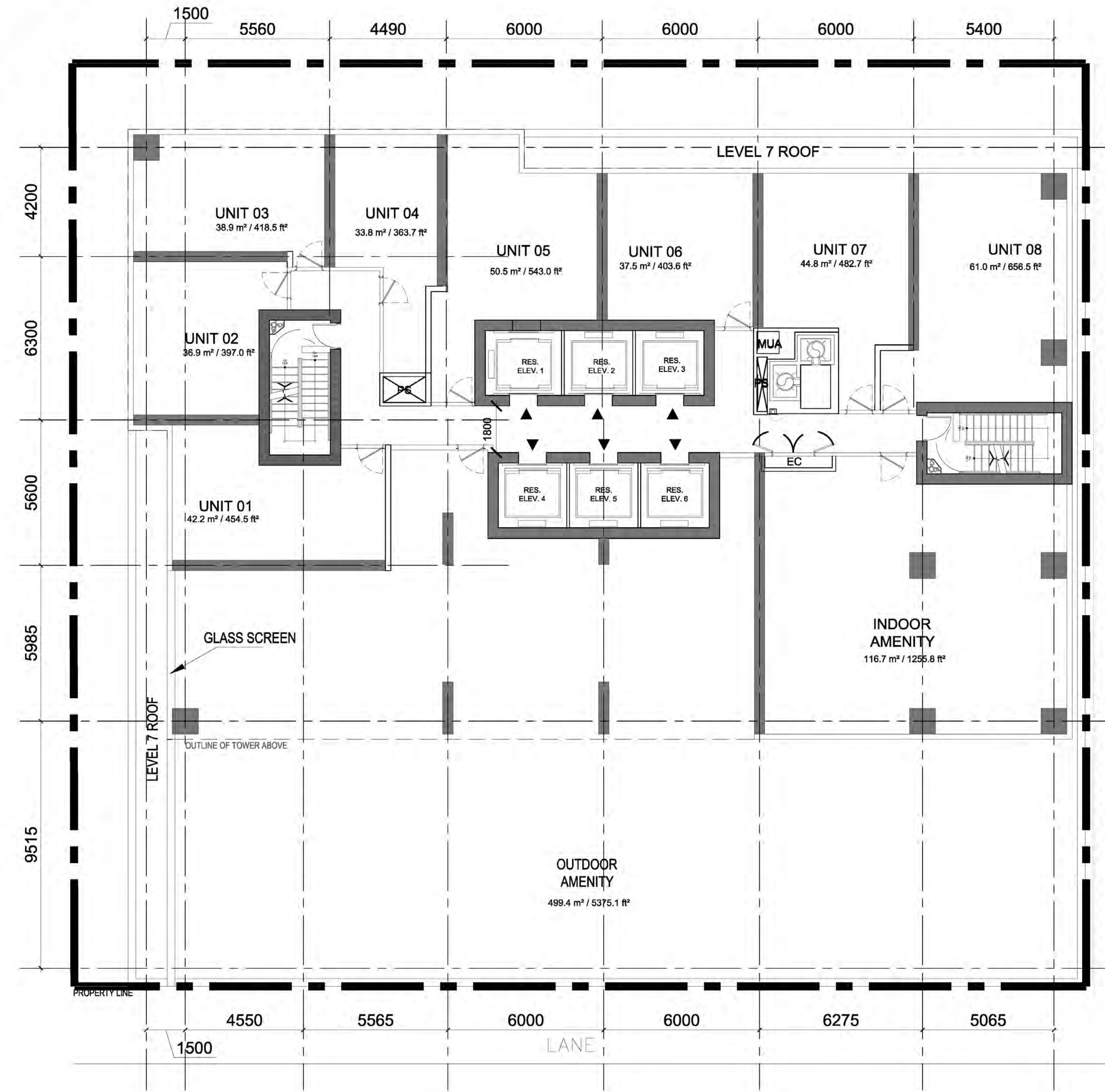
110 EGLINTON AVE. E.  
SUITE #500  
TORONTO, ONTARIO  
M4P 2Y1

ISSUED

No.	DATE	DESCRIPTION
1	2020/12/17	ISSUED FOR ZBA & SPA
2	2022/11/29	WITHOUT PREJUDICE - SETTLEMENT OPTION

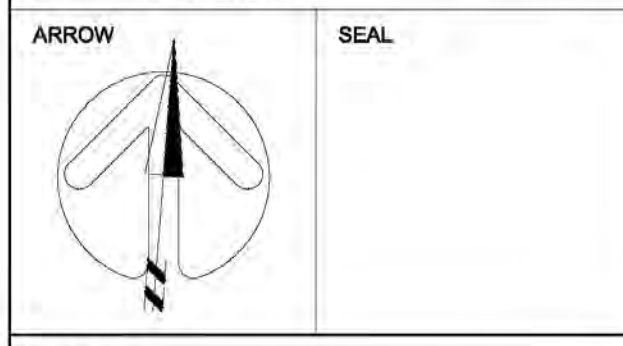
WELLINGTON STREET WEST

BLUE JAYS WAY



**COPYRIGHT:**  
Any reproduction or distribution for any purpose other than authorized by IBI Group is forbidden. Written dimensions shall have precedence over scaled dimensions. Contractors shall verify and be responsible for all dimensions and conditions on the job and IBI Group shall be relieved of any liability from the dimensions and conditions shown on this drawing. Shop drawings shall be submitted to IBI Group for general confirmation before proceeding with fabrication.

**IBI GROUP ARCHITECTS (CANADA) INC.**  
is a member of IBI Group of companies  
**IBI GROUP ARCHITECTS (CANADA) INC.**  
7TH FLOOR - 55 ST. CLAIR AVE. W.  
TORONTO, ONTARIO M4V 2Y7  
tel (416) 596-1930 fax (416) 596-0644  
ibigroup.com



PROJECT  
**277 WELLINGTON ST. W.**  
TORONTO, ONTARIO

SHEET TITLE  
**LEVEL 11 FLOOR PLAN**

DRAWN BY: CHKD' BY: DATE: SCALE:  
Author Checker 2022/11/29 1:100

PROJECT NO: DWG NO.  
125033 A1.12



CLIENT

THE RW COMMERCIAL  
PROPERTIES CORPORATION

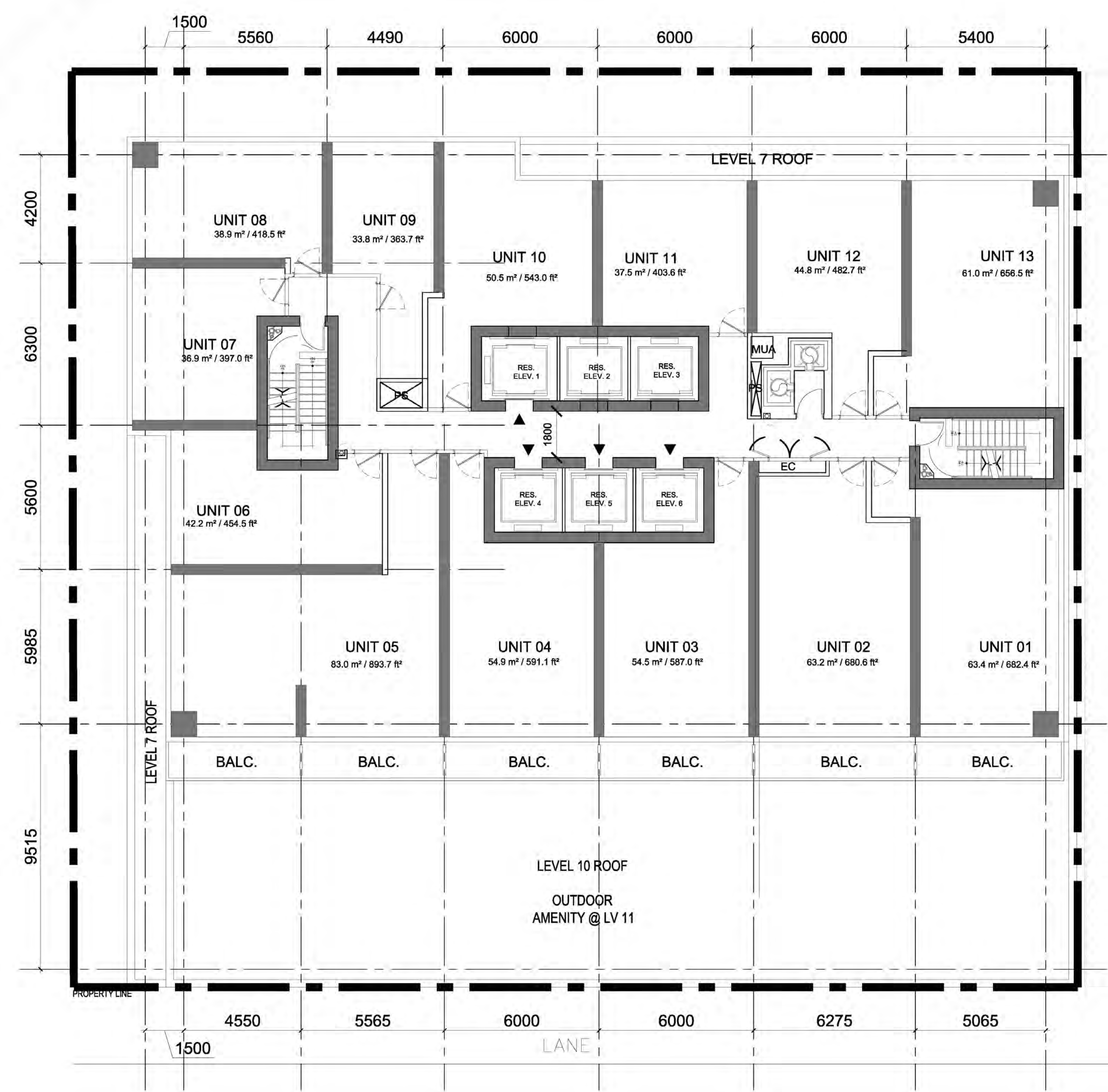
110 EGLINTON AVE. E.  
SUITE #500  
TORONTO, ONTARIO  
M4P 2Y1

ISSUED

No.	DATE	DESCRIPTION
1	2020/12/17	ISSUED FOR ZBA & SPA
2	2022/11/29	WITHOUT PREJUDICE - SETTLEMENT OPTION

BLUE JAYS WAY

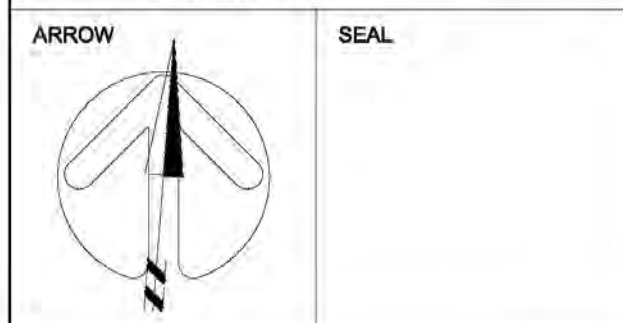
WELLINGTON STREET WEST



**COPYRIGHT:**  
Any reproduction or distribution for any purpose other than authorized by IBI Group is forbidden. Written dimensions shall have precedence over scaled dimensions. Contractors shall verify and be responsible for all dimensions and conditions on the job and IBI Group shall be advised of any variations from the dimensions and conditions shown on the drawing. Shop drawings shall be submitted to IBI Group for general confirmation before proceeding with fabrication.

IBI GROUP ARCHITECTS (CANADA) INC.  
is a member of IBI Group of companies

**IBI** IBI GROUP ARCHITECTS (CANADA) INC.  
7TH FLOOR - 55 ST. CLAIR AVE. W.  
TORONTO, ONTARIO M4V 2Y7  
tel (416) 596-1930 fax (416) 596-0644  
ibigroup.com



PROJECT  
277 WELLINGTON ST. W.  
TORONTO, ONTARIO

SHEET TITLE  
TYPICAL TOWER  
FLOOR PLAN - 12-37

DRAWN BY: CHK'D BY: DATE: SCALE:  
Author Checker 2022/11/29 1:100

PROJECT NO: DWG NO.  
125033 A1.13

CLIENT

THE RW COMMERCIAL  
PROPERTIES CORPORATION

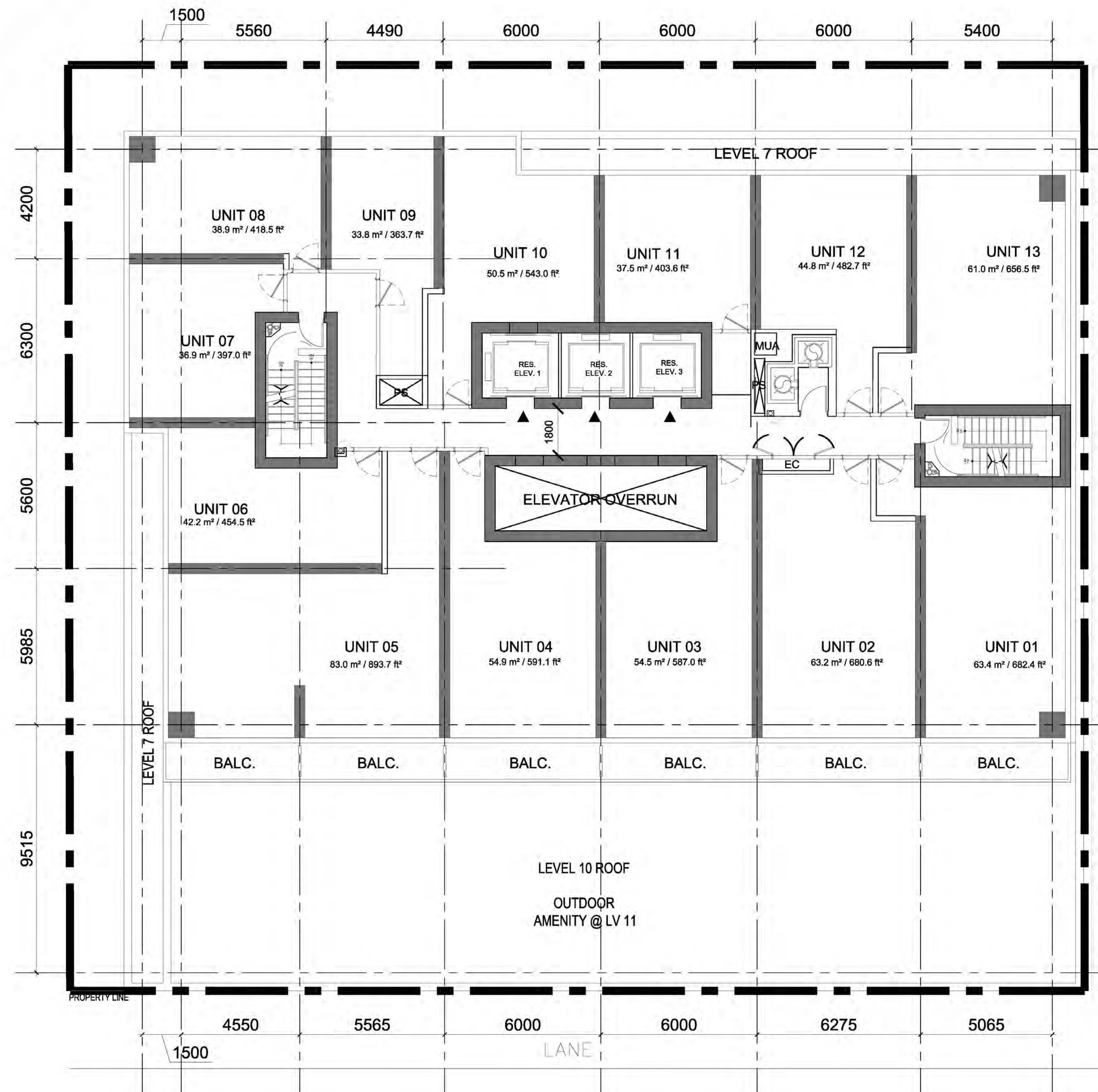
110 EGLINTON AVE. E.  
SUITE #500  
TORONTO, ONTARIO  
M4P 2Y1

ISSUED

No.	DATE	DESCRIPTION
1	2020/12/17	ISSUED FOR ZBA & SPA
2	2022/11/29	WITHOUT PREJUDICE - SETTLEMENT OPTION

WELLINGTON STREET WEST

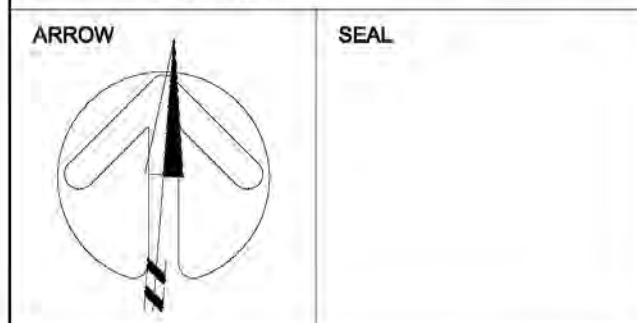
BLUE JAYS WAY



**COPYRIGHT:**  
Any reproduction or distribution for any purpose other than authorized by IBI Group is forbidden. Written dimensions shall have precedence over scaled dimensions. Contractors shall verify and be responsible for all dimensions and conditions on the job and IBI Group shall be relieved of any liability from the dimensions and conditions shown on this drawing. Shop drawings shall be submitted to IBI Group for general confirmation before proceeding with fabrication.

IBI GROUP ARCHITECTS (CANADA) INC.  
is a member of IBI Group of companies

**IBI** IBI GROUP ARCHITECTS (CANADA) INC.  
7TH FLOOR - 55 ST. CLAIR AVE. W.  
TORONTO, ONTARIO M4V 2Y7  
tel (416) 596-1930 fax (416) 596-0644  
ibigroup.com



PROJECT  
277 WELLINGTON ST. W.  
TORONTO, ONTARIO

SHEET TITLE  
LEVEL 38-39 FLOOR  
PLAN

DRAWN BY: CHKD' BY: DATE: SCALE:  
Author Checker 2022/11/29 1:100

PROJECT NO: DWG NO.  
125033 A1.14

CLIENT

THE RW COMMERCIAL  
PROPERTIES CORPORATION

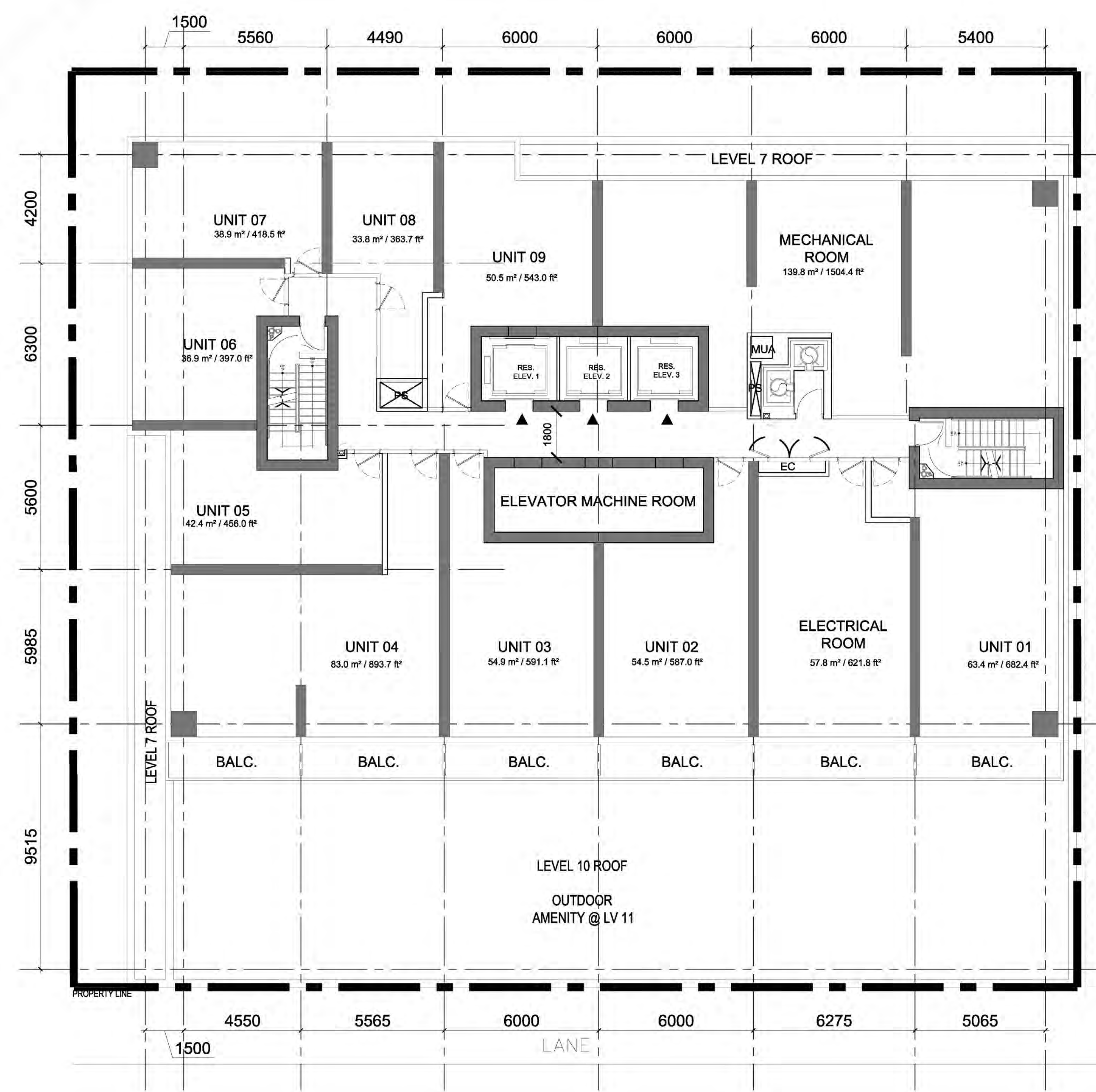
110 EGLINTON AVE. E.  
SUITE #500  
TORONTO, ONTARIO  
M4P 2Y1

ISSUED

No.	DATE	DESCRIPTION
1	2020/12/17	ISSUED FOR ZBA & SPA
2	2022/11/29	WITHOUT PREJUDICE - SETTLEMENT OPTION

WELLINGTON STREET WEST

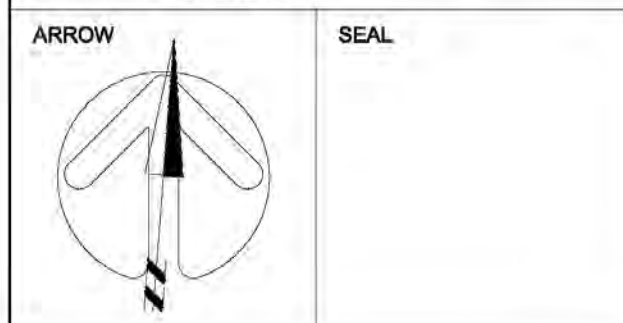
BLUE JAYS WAY



**COPYRIGHT:**  
Any reproduction or distribution for any purpose other than authorized by IBI Group is forbidden. Written dimensions shall have precedence over scaled dimensions. Contractors shall verify and be responsible for all dimensions and conditions on the job and IBI Group shall be relieved of any liability from the dimensions and conditions shown on this drawing. Shop drawings shall be submitted to IBI Group for general confirmation before proceeding with fabrication.

**IBI GROUP ARCHITECTS (CANADA) INC.**  
is a member of IBI Group of companies

**IBI** IBI GROUP ARCHITECTS (CANADA) INC.  
7TH FLOOR - 55 ST. CLAIR AVE. W.  
TORONTO, ONTARIO M4V 2Y7  
tel (416) 596-1930 fax (416) 596-0644  
ibigroup.com



PROJECT  
**277 WELLINGTON ST. W.**  
TORONTO, ONTARIO

SHEET TITLE  
**LEVEL 40 FLOOR PLAN**

DRAWN BY: CHKD' BY: DATE: SCALE:  
Author Checker 2022/11/29 1:100

PROJECT NO: DWG NO.  
125033 A1.15

CLIENT

THE RW COMMERCIAL  
PROPERTIES CORPORATION

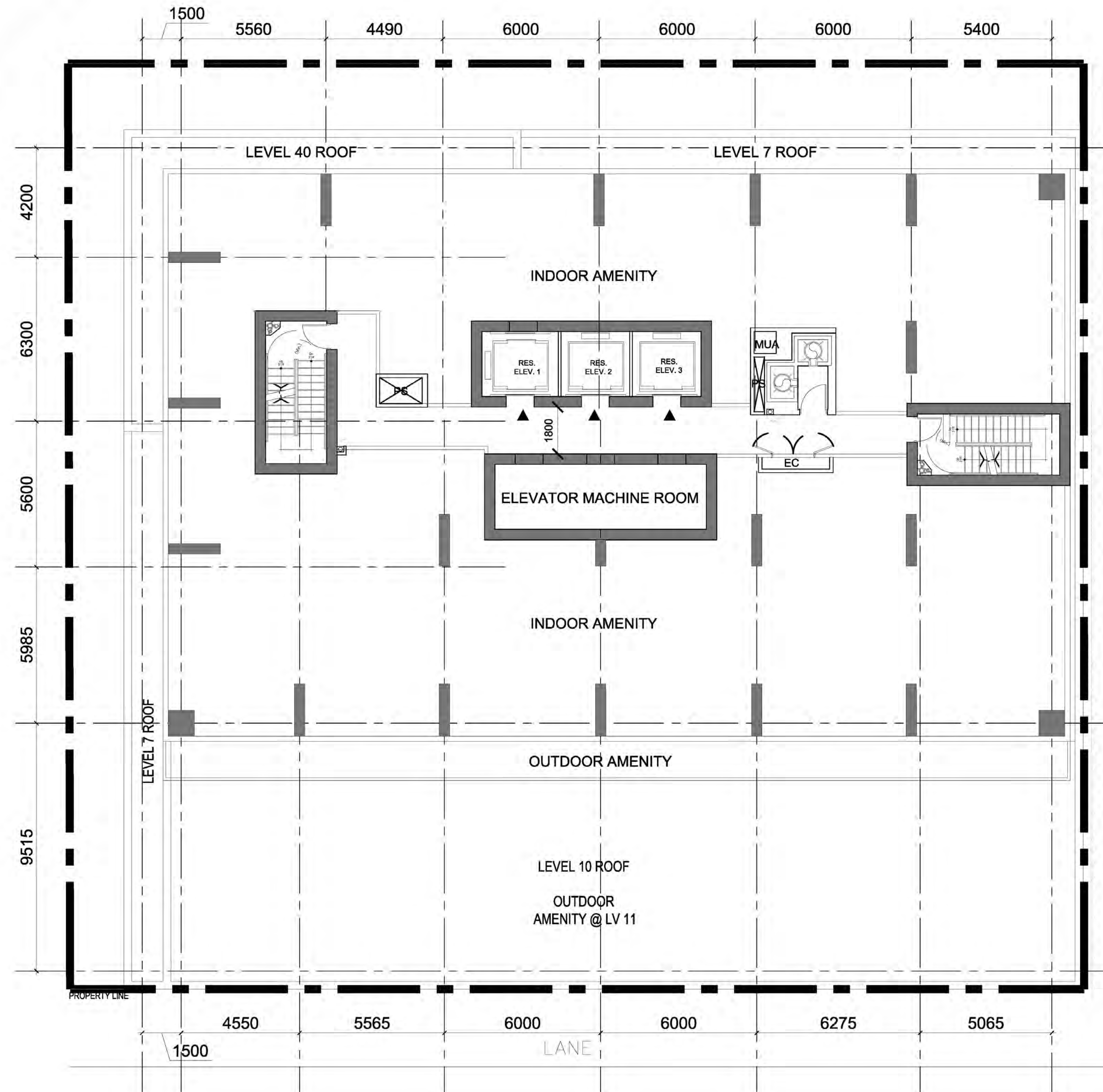
110 EGLINTON AVE. E.  
SUITE #500  
TORONTO, ONTARIO  
M4P 2Y1

ISSUED

No.	DATE	DESCRIPTION
1	2020/12/17	ISSUED FOR ZBA & SPA
2	2022/11/29	WITHOUT PREJUDICE - SETTLEMENT OPTION

WELLINGTON STREET WEST

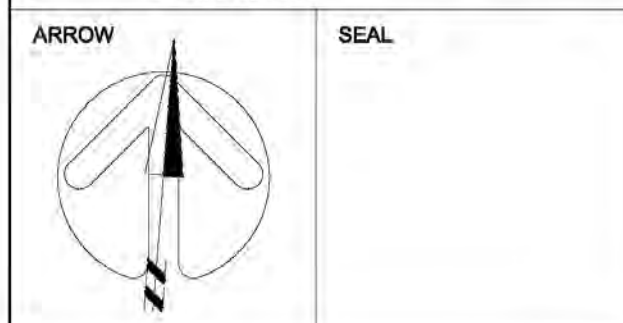
BLUE JAYS WAY



**COPYRIGHT:**  
Any reproduction or distribution for any purpose other than authorized by IBI Group is forbidden. Written dimensions shall have precedence over scaled dimensions. Contractors shall verify and be responsible for all dimensions and conditions on the job and IBI Group shall be relieved of any liability from the dimensions and conditions shown on this drawing. Shop drawings shall be submitted to IBI Group for general confirmation before proceeding with fabrication.

**IBI GROUP ARCHITECTS (CANADA) INC.**  
is a member of IBI Group of companies

**IBI** IBI GROUP ARCHITECTS (CANADA) INC.  
7TH FLOOR - 55 ST. CLAIR AVE. W.  
TORONTO, ONTARIO M4V 2Y7  
tel (416) 596-1930 fax (416) 596-0644  
ibigroup.com



PROJECT  
**277 WELLINGTON ST. W.**  
TORONTO, ONTARIO

SHEET TITLE  
**LEVEL 41 AMENITY  
FLOOR PLAN**

DRAWN BY: CHKD' BY: DATE: SCALE:  
Author Checker 2022/11/29 1:100

PROJECT NO: DWG NO.  
125033 A1.16

CLIENT

THE RW COMMERCIAL  
PROPERTIES CORPORATION

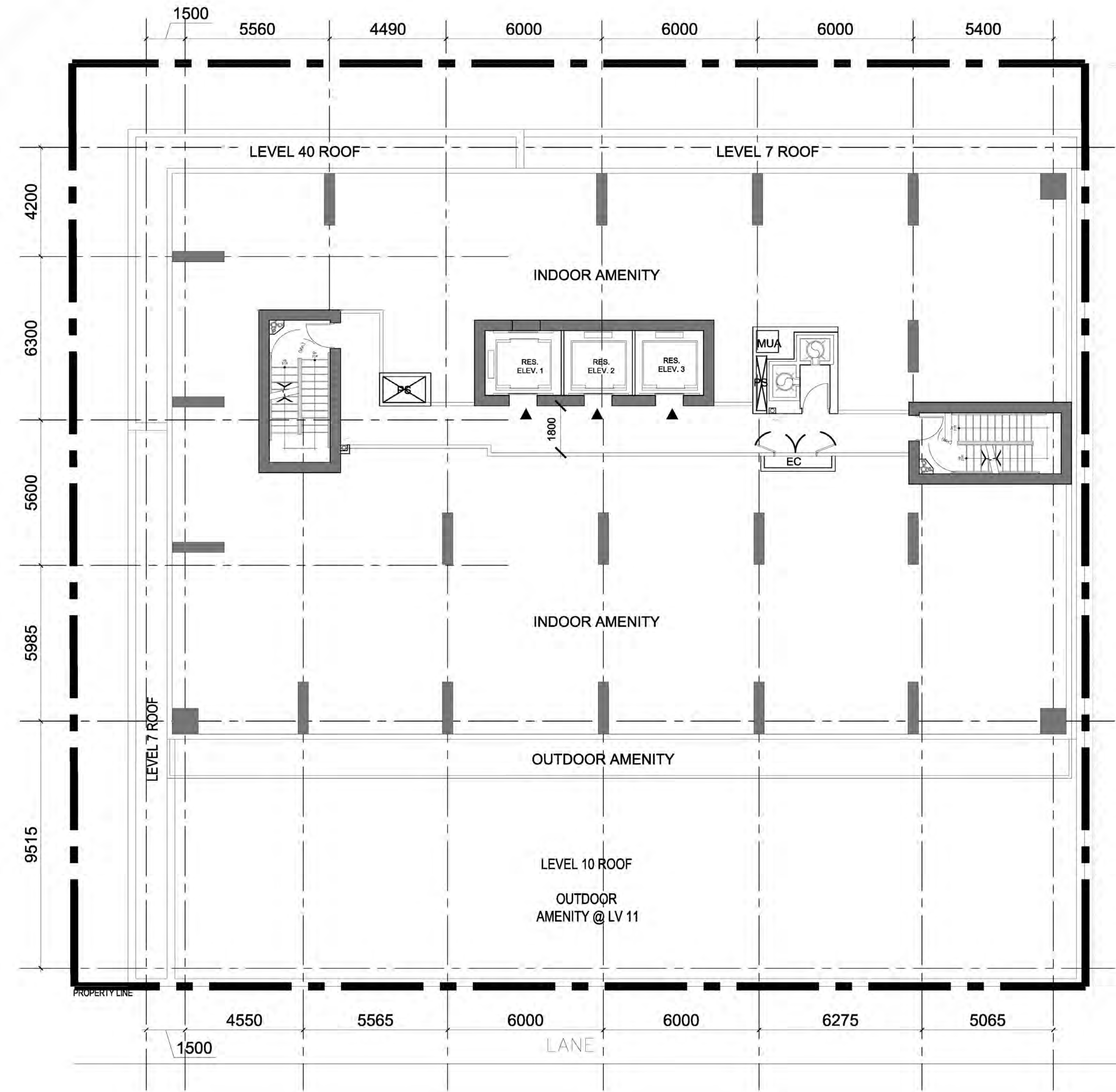
110 EGLINTON AVE. E.  
SUITE #500  
TORONTO, ONTARIO  
M4P 2Y1

ISSUED

No.	DATE	DESCRIPTION
1	2020/12/17	ISSUED FOR ZBA & SPA
2	2022/11/29	WITHOUT PREJUDICE - SETTLEMENT OPTION

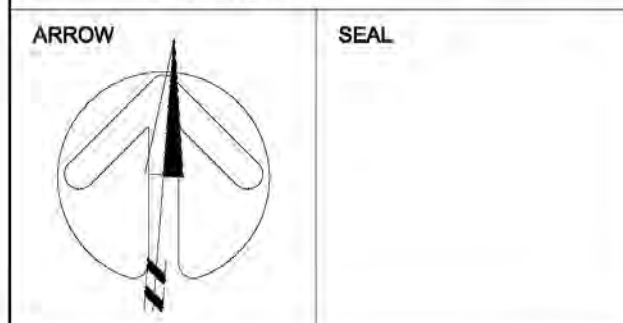
WELLINGTON STREET WEST

BLUE JAYS WAY



**COPYRIGHT:**  
Any reproduction or distribution for any purpose other than authorized by IBI Group is forbidden. Written dimensions shall have precedence over scaled dimensions. Contractors shall verify and be responsible for all dimensions and conditions on the job and IBI Group shall be relieved of any liability from the dimensions and conditions shown on this drawing. Shop drawings shall be submitted to IBI Group for general confirmation before proceeding with fabrication.

**IBI GROUP ARCHITECTS (CANADA) INC.**  
is a member of IBI Group of companies  
**IBI** IBI GROUP ARCHITECTS (CANADA) INC.  
7TH FLOOR - 55 ST. CLAIR AVE. W.  
TORONTO, ONTARIO M4V 2Y7  
tel (416) 596-1930 fax (416) 596-0644  
ibigroup.com



PROJECT  
**277 WELLINGTON ST. W.**  
TORONTO, ONTARIO

SHEET TITLE  
**LEVEL 42 AMENITY  
FLOOR PLAN**

DRAWN BY: CHK'D BY: DATE: SCALE:  
Author Checker 2022/11/29 1:100

PROJECT NO: DWG NO.  
125033 A1.17

CLIENT

THE RW COMMERCIAL  
PROPERTIES CORPORATION

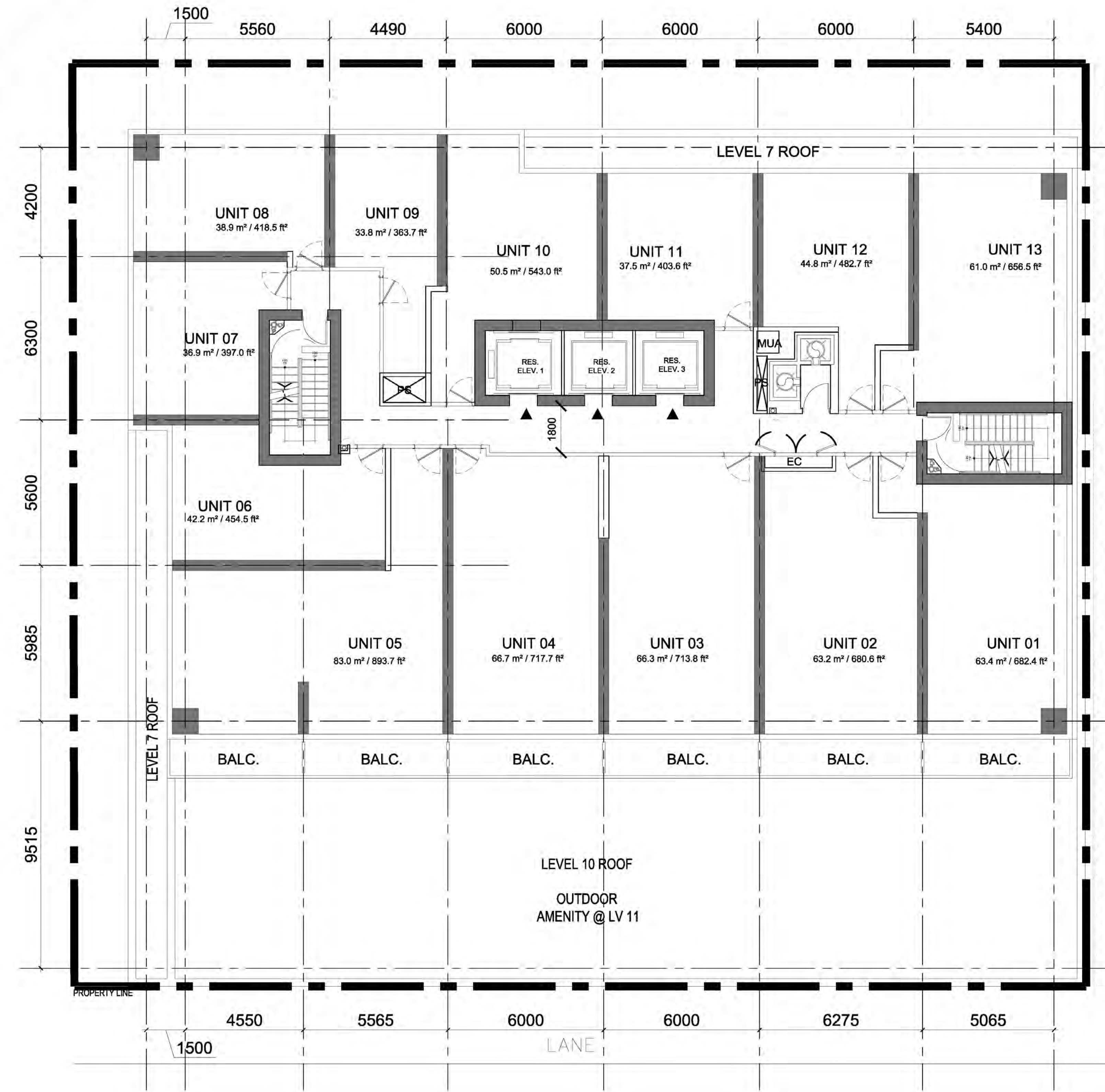
110 EGLINTON AVE. E.  
SUITE #500  
TORONTO, ONTARIO  
M4P 2Y1

ISSUED

No.	DATE	DESCRIPTION
1	2020/12/17	ISSUED FOR ZBA & SPA
2	2022/11/29	WITHOUT PREJUDICE - SETTLEMENT OPTION

WELLINGTON STREET WEST

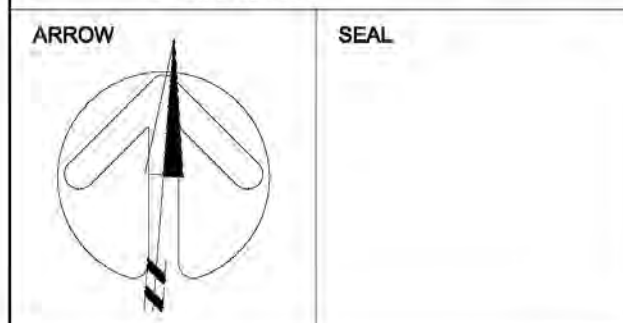
BLUE JAYS WAY



**COPYRIGHT:**  
Any reproduction or distribution for any purpose other than authorized by IBI Group is forbidden. Written dimensions shall have precedence over scaled dimensions. Contractors shall verify and be responsible for all dimensions and conditions on the job and IBI Group shall be advised of any variations from the dimensions and conditions shown on the drawing. Shop drawings shall be submitted to IBI Group for general confirmation before proceeding with fabrication.

**IBI GROUP ARCHITECTS (CANADA) INC.**  
is a member of IBI Group of companies

**IBI** IBI GROUP ARCHITECTS (CANADA) INC.  
7TH FLOOR - 55 ST. CLAIR AVE. W.  
TORONTO, ONTARIO M4V 2Y7  
tel (416) 596-1930 fax (416) 596-0644  
ibigroup.com



PROJECT  
**277 WELLINGTON ST. W.**  
TORONTO, ONTARIO

SHEET TITLE  
**TYPICAL TOWER  
FLOOR PLAN - 43-60**

DRAWN BY: CHK'D BY: DATE: SCALE:  
Author Checker 2022/11/29 1:100

PROJECT NO: DWG NO.  
125033 A1.18

CLIENT

THE RW COMMERCIAL  
PROPERTIES CORPORATION

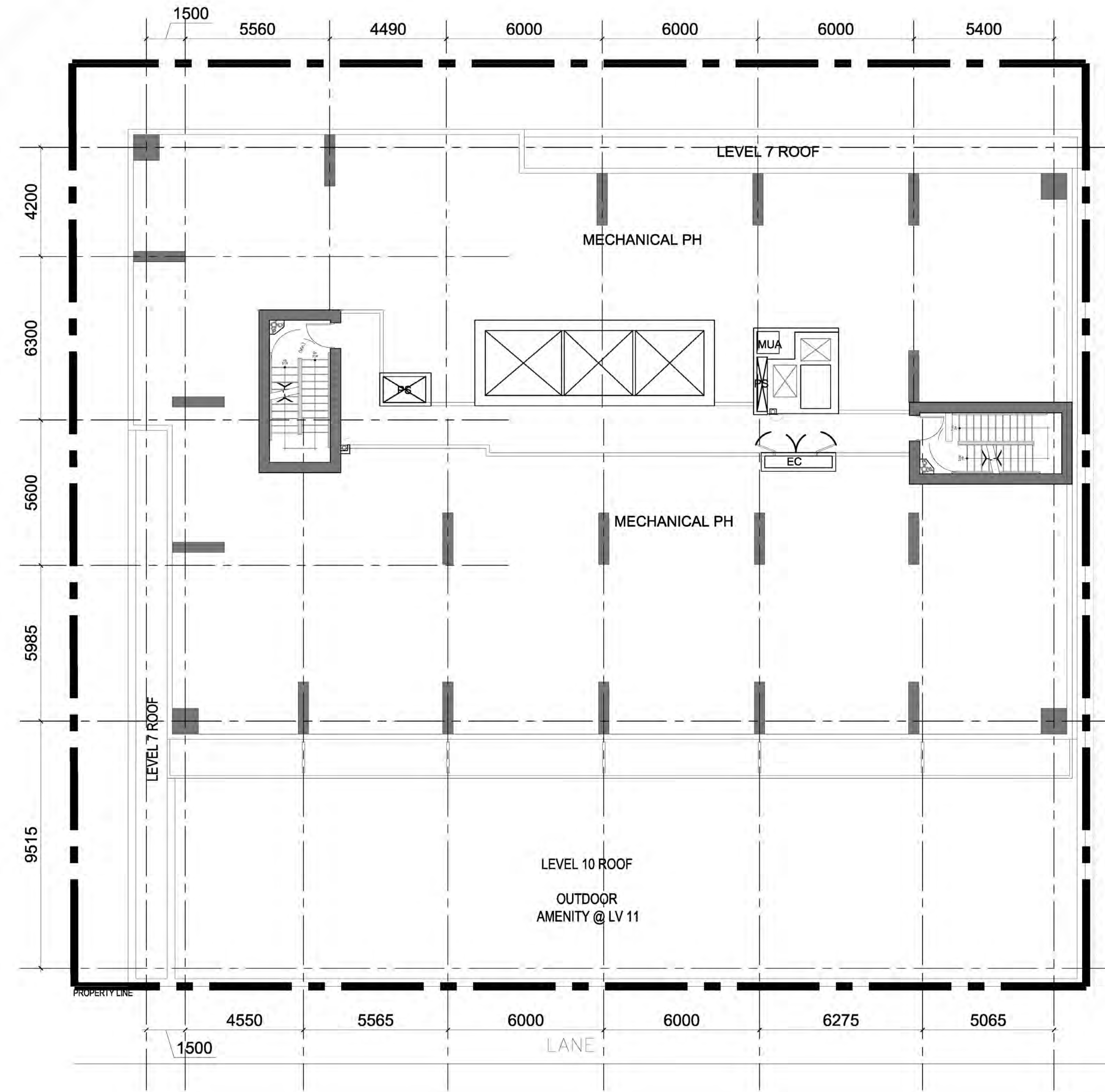
110 EGLINTON AVE. E.  
SUITE #500  
TORONTO, ONTARIO  
M4P 2Y1

ISSUED

No.	DATE	DESCRIPTION
1	2020/12/17	ISSUED FOR ZBA & SPA
2	2022/11/29	WITHOUT PREJUDICE - SETTLEMENT OPTION

WELLINGTON STREET WEST

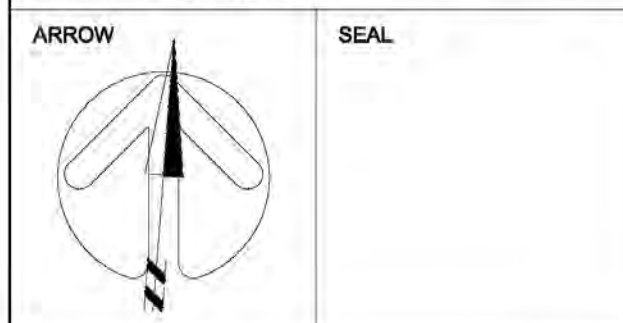
BLUE JAYS WAY



**COPYRIGHT:**  
Any reproduction or distribution for any purpose other than authorized by IBI Group is forbidden. Written dimensions shall have precedence over scaled dimensions. Contractors shall verify and be responsible for all dimensions and conditions on the job and IBI Group shall be relieved of any liability from the dimensions and conditions shown on this drawing. Shop drawings shall be submitted to IBI Group for general confirmation before proceeding with fabrication.

**IBI GROUP ARCHITECTS (CANADA) INC.**  
is a member of IBI Group of companies

**IBI** IBI GROUP ARCHITECTS (CANADA) INC.  
7TH FLOOR - 55 ST. CLAIR AVE. W.  
TORONTO, ONTARIO M4V 2Y7  
tel (416) 596-1930 fax (416) 596-0644  
ibigroup.com



PROJECT  
**277 WELLINGTON ST. W.**  
TORONTO, ONTARIO

SHEET TITLE  
**LEVEL MECHANICAL  
PENTHOUSE FLOOR  
PLAN**

DRAWN BY:	CHKD' BY:	DATE:	SCALE:
Author	Checker	2022/11/29	1 : 100

PROJECT NO:	DWG NO.
125033	A1.19