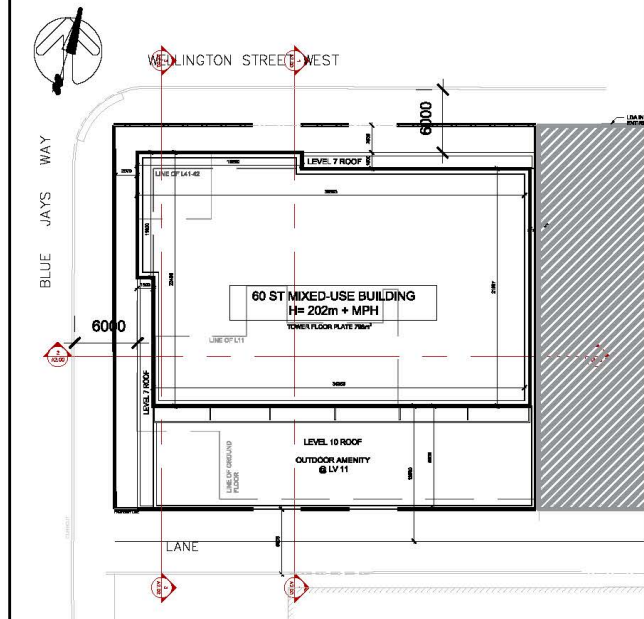


No.	DATE	DESCRIPTION
1	2020/12/17	ISSUED FOR ZBA & SFA
2	2022/11/29	WITHOUT PREJUDICE - SETTLEMENT OPTION

KEY PLAN



COPYRIGHT:
Any reproduction or distribution for any purpose other than authorized by IBI Group is forbidden. Written dimensions shall have precedence over scaled dimensions. Contractors shall verify and be responsible for all dimensions and conditions on the job and IBI Group shall be informed of any variations from the dimensions and conditions shown on the drawing. Shop drawings shall be submitted to IBI Group for general confirmation before proceeding with fabrication.

IBI GROUP ARCHITECTS (CANADA) INC.
is a member of IBI Group of companies

IBI GROUP ARCHITECTS (CANADA) INC.
7TH FLOOR - 55 ST. CLAIR AVE. W.
TORONTO, ONTARIO M4V 2Y7
(416) 596-1930 fax (416) 596-0644
ibigroup.com

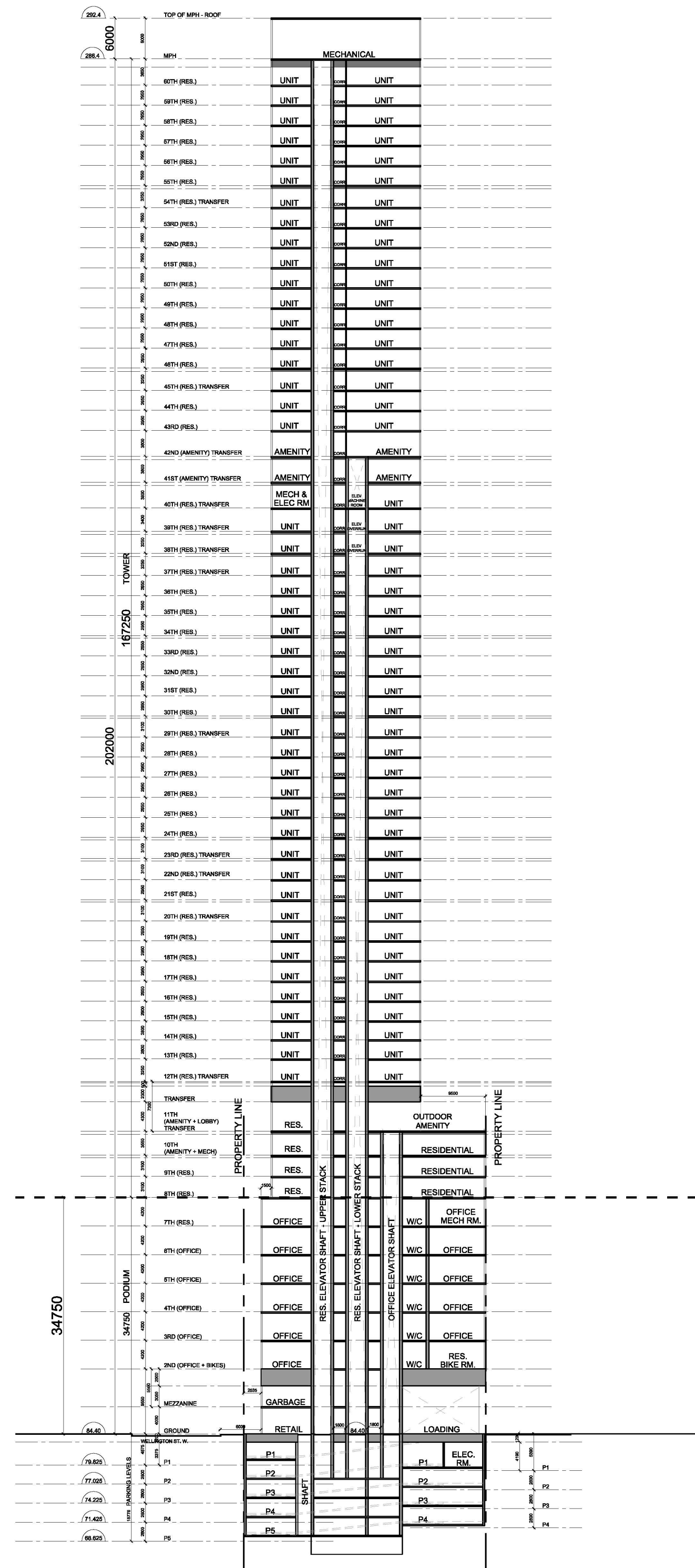
ARROW SEAL

PROJECT
277 WELLINGTON ST. W.
TORONTO, ONTARIO

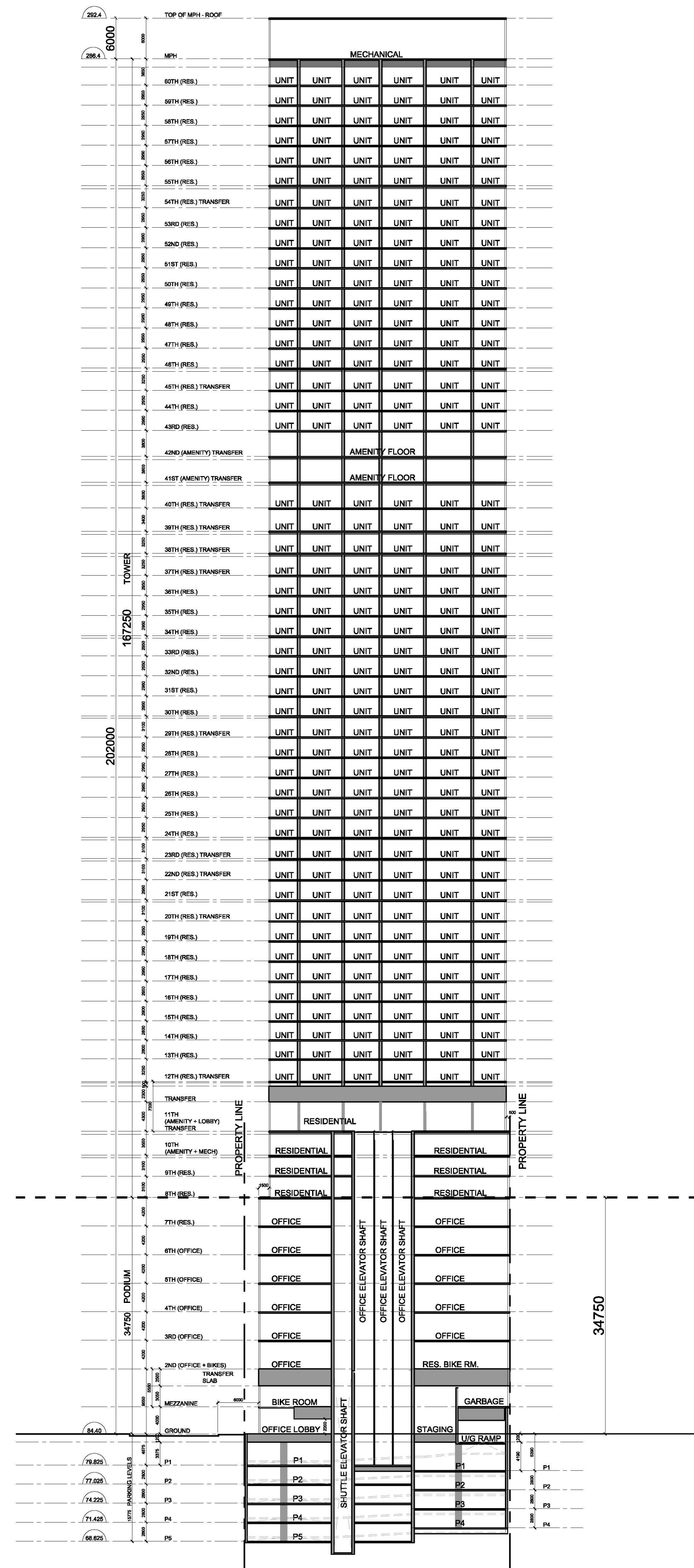
SHEET TITLE
BUILDING SECTIONS

DRAWN BY: CHKD' BY: DATE: SCALE:
Author Checker 2022/11/29 1:500

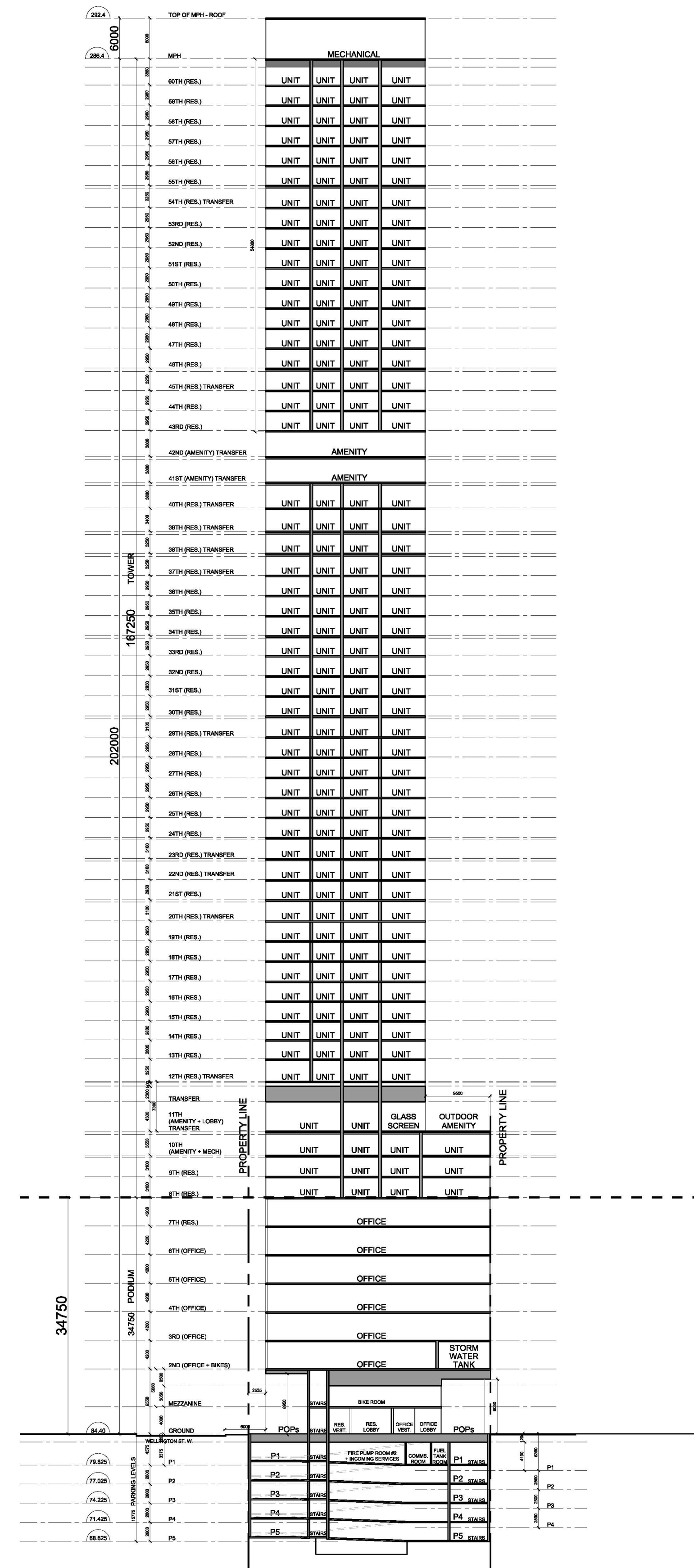
PROJECT NO: DWG NO.
125033 A2.00 - 2.02



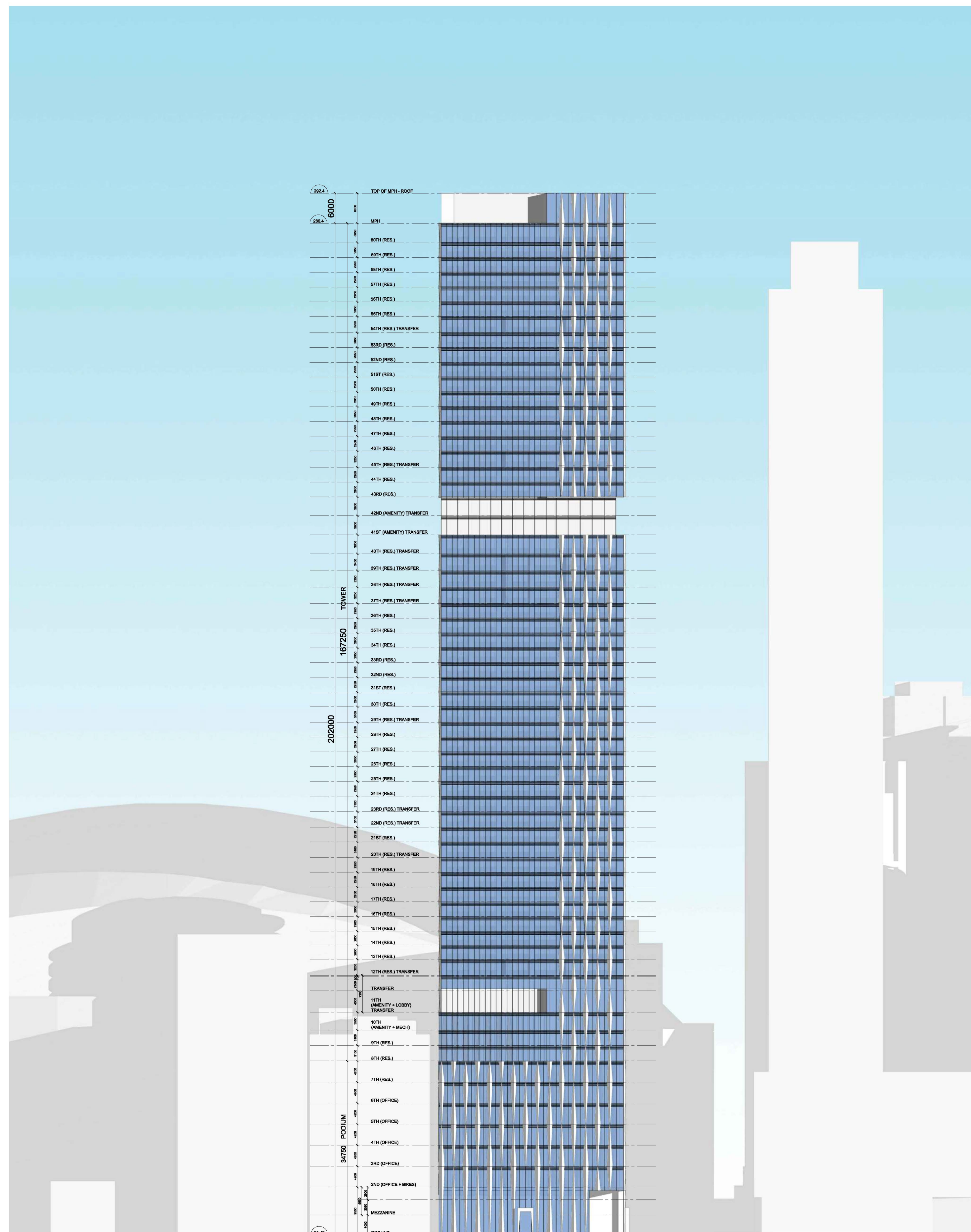
1 A2.00 NORTH-SOUTH
SCALE: 1:500



2 A2.01 EAST-WEST
SCALE: 1:500



3 A2.02 NORTH-SOUTH POPs
SCALE: 1:500



1 A3.00 NORTH ELEVATION
SCALE: 1 : 500

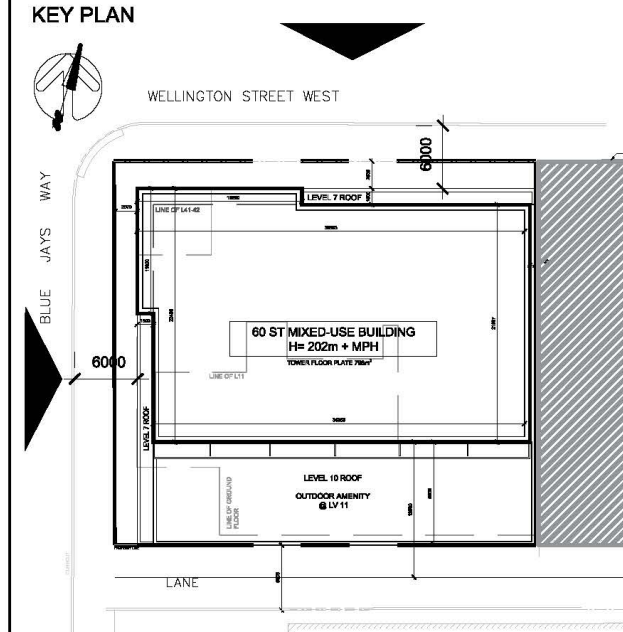


2 A3.01 WEST ELEVATION
SCALE: 1 : 500

CLIENT
**THE RW COMMERCIAL
PROPERTIES CORPORATION**
110 EGLINTON AVE. E.
SUITE #500
TORONTO, ONTARIO
M4P 2Y1

ISSUED

No.	DATE	DESCRIPTION
1	2020/12/17	ISSUED FOR ZBA & SFA
2	2022/11/29	WITHOUT PREJUDICE - SETTLEMENT OPTION



COPYRIGHT:
Any reproduction or distribution for any purpose other than authorized by IBI Group is forbidden. Written dimensions shall have precedence over scaled dimensions. Contractors shall verify and be responsible for all dimensions and conditions on the job and IBI Group shall be informed of any variations from the dimensions and conditions shown on the drawing. Shop drawings shall be submitted to IBI Group for general confirmation before proceeding with fabrication.

IBI GROUP ARCHITECTS (CANADA) INC.
is a member of IBI Group of companies
IBI GROUP ARCHITECTS (CANADA) INC.
7TH FLOOR - 55 ST. CLAIR AVE. W.
TORONTO, ONTARIO M4V 2Y7
Tel (416) 595-1930 fax (416) 596-0644
ibigroup.com

ARROW	SEAL
-------	------

PROJECT
277 WELLINGTON ST. W.
TORONTO, ONTARIO

SHEET TITLE
**NORTH AND WEST
ELEVATION**

DRAWN BY: Author	CHKD' BY: Checker	DATE: 2022/11/29	SCALE: 1 : 500
---------------------	----------------------	---------------------	-------------------

PROJECT NO: 125033
DWG NO: **A3.00-A3.01**

CLIENT

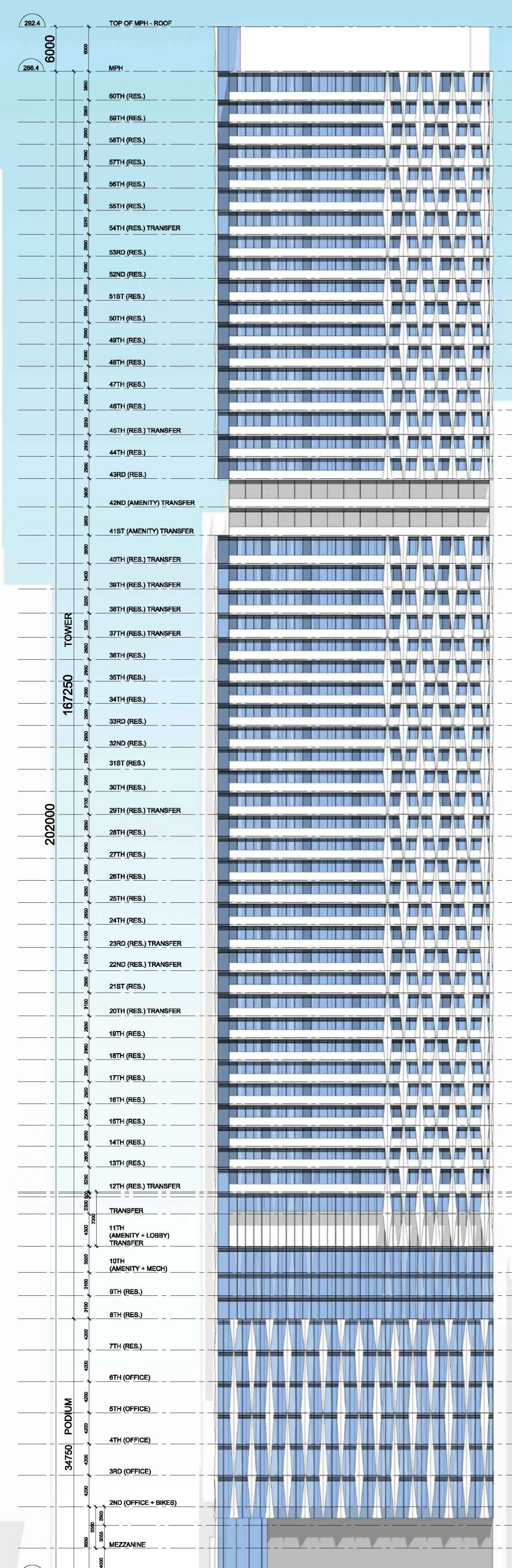
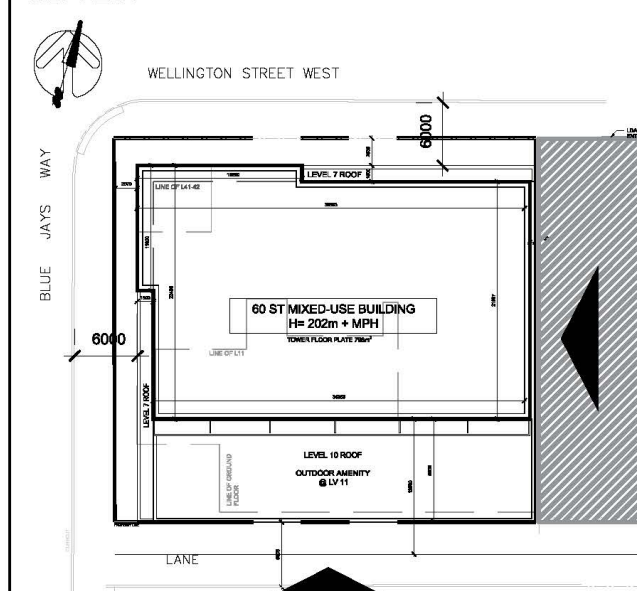
THE RW COMMERCIAL
PROPERTIES CORPORATION

110 EGLINTON AVE. E.
SUITE #500
TORONTO, ONTARIO
M4P 2Y1

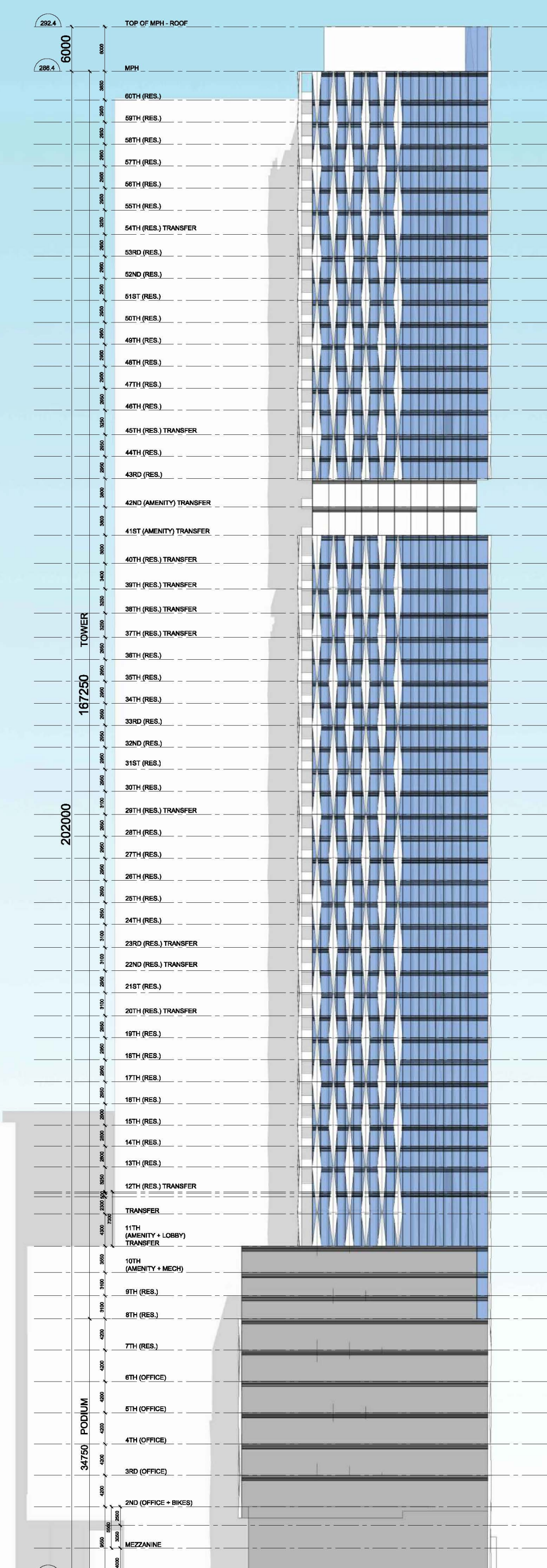
ISSUED

No.	DATE	DESCRIPTION
1	2020/12/17	ISSUED FOR ZBA & SFA
2	2022/11/29	WITHOUT PREJUDICE - SETTLEMENT OPTION

KEY PLAN



3 A3.02 SOUTH ELEVATION
SCALE: 1 : 500



4 A3.03 EAST ELEVATION
SCALE: 1 : 500

COPYRIGHT:
Any reproduction or distribution for any purpose other than authorized by IBI Group is forbidden. Written dimensions shall have precedence over scaled dimensions. Contractors shall verify and be responsible for all dimensions and conditions on the job and IBI Group shall be informed of any variations from the dimensions and conditions shown on the drawing. Shop drawings shall be submitted to IBI Group for general confirmation before proceeding with fabrication.

IBI GROUP ARCHITECTS (CANADA) INC.
is a member of IBI Group of companies

IBI GROUP ARCHITECTS (CANADA) INC.
7TH FLOOR - 55 ST. CLAIR AVE. W.
TORONTO, ONTARIO M4V 2Y7
Tel (416) 596-1930 Fax (416) 596-0644
ibigroup.com

ARROW	SEAL
-------	------

PROJECT
277 WELLINGTON ST. W.
TORONTO, ONTARIO

SHEET TITLE
SOUTH AND EAST
ELEVATION

DRAWN BY: Author	CHKD' BY: Checker	DATE: 2022/11/29	SCALE: 1 : 500
---------------------	----------------------	---------------------	-------------------

PROJECT NO: 125033	DWG NO. A3.02-3.03
-----------------------	-----------------------

CLIENT

THE RW COMMERCIAL
PROPERTIES CORPORATION

110 EGLINTON AVE. E.
SUITE #500
TORONTO, ONTARIO
M4P 2Y1

ISSUED

No.	DATE	DESCRIPTION
1	2020/12/17	ISSUED FOR ZBA & SFA
2	2022/11/29	WITHOUT PREJUDICE - SETTLEMENT OPTION

VIEW FROM BLUE JAYS WAY - LOOKING SOUTH



VIEW FROM CLARENCE SQUARE PARK



COPYRIGHT:
Any reproduction or distribution for any purpose other than authorized by IBI Group is forbidden. Written dimensions shall have precedence over scaled dimensions. Contractors shall verify and be responsible for all dimensions and conditions on the job and IBI Group shall be informed of any variations from the dimensions and conditions shown on the drawing. Shop drawings shall be submitted to IBI Group for general confirmation before proceeding with fabrication.

IBI GROUP ARCHITECTS (CANADA) INC.
is a member of IBI Group of companies

IBI IBI GROUP ARCHITECTS (CANADA) INC.
7TH FLOOR - 55 ST. CLAIR AVE. W.
TORONTO, ONTARIO M4V 2Y7
tel (416) 596-1930 fax (416) 596-0644
ibigroup.com

ARROW SEAL

PROJECT
277 WELLINGTON ST. W.
TORONTO, ONTARIO

SHEET TITLE
VISUALIZATIONS

DRAWN BY: CHKD' BY: DATE: SCALE:
Author Checker 2022/11/29 NTS

PROJECT NO: DWG NO.
125033 A4.00