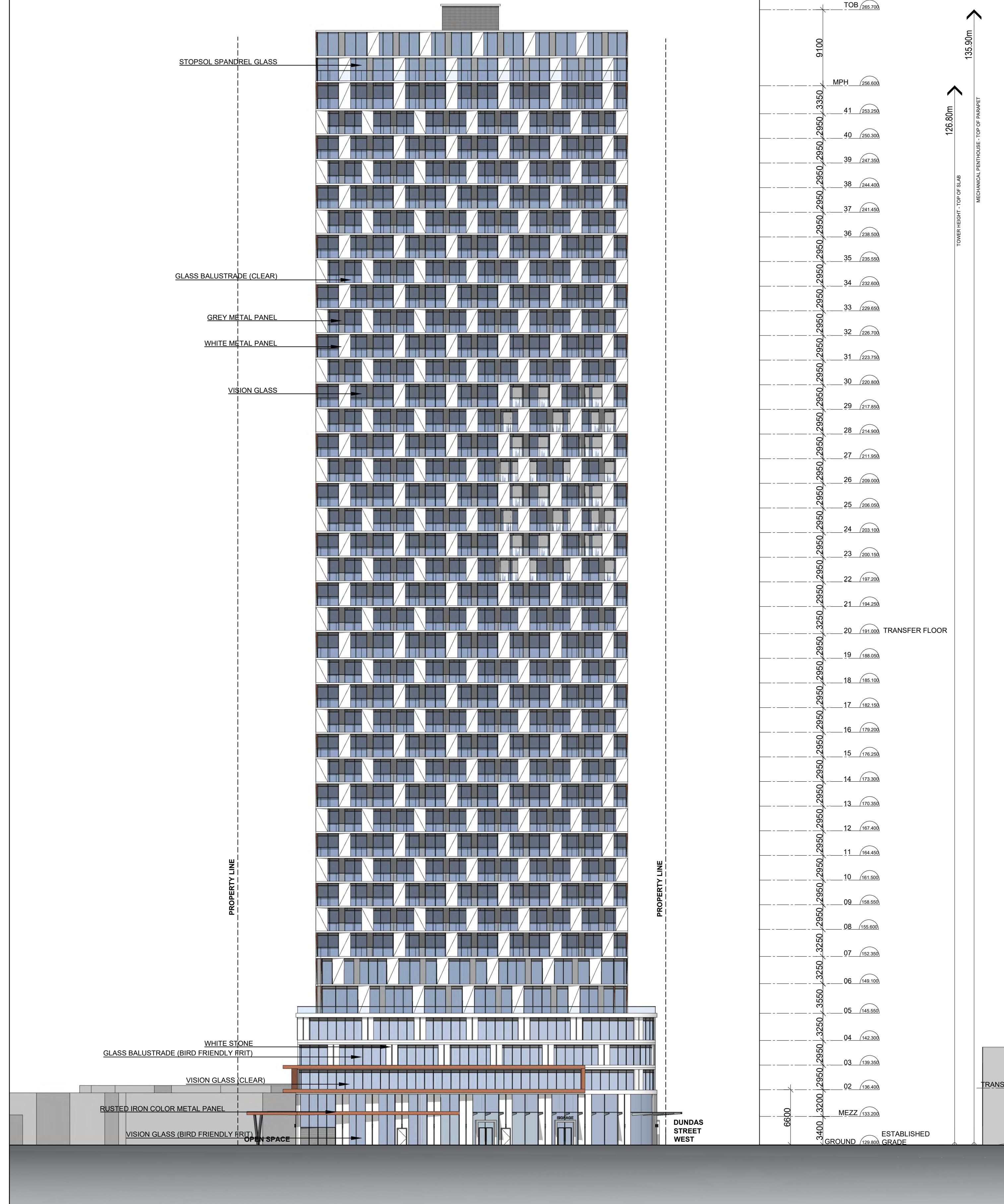
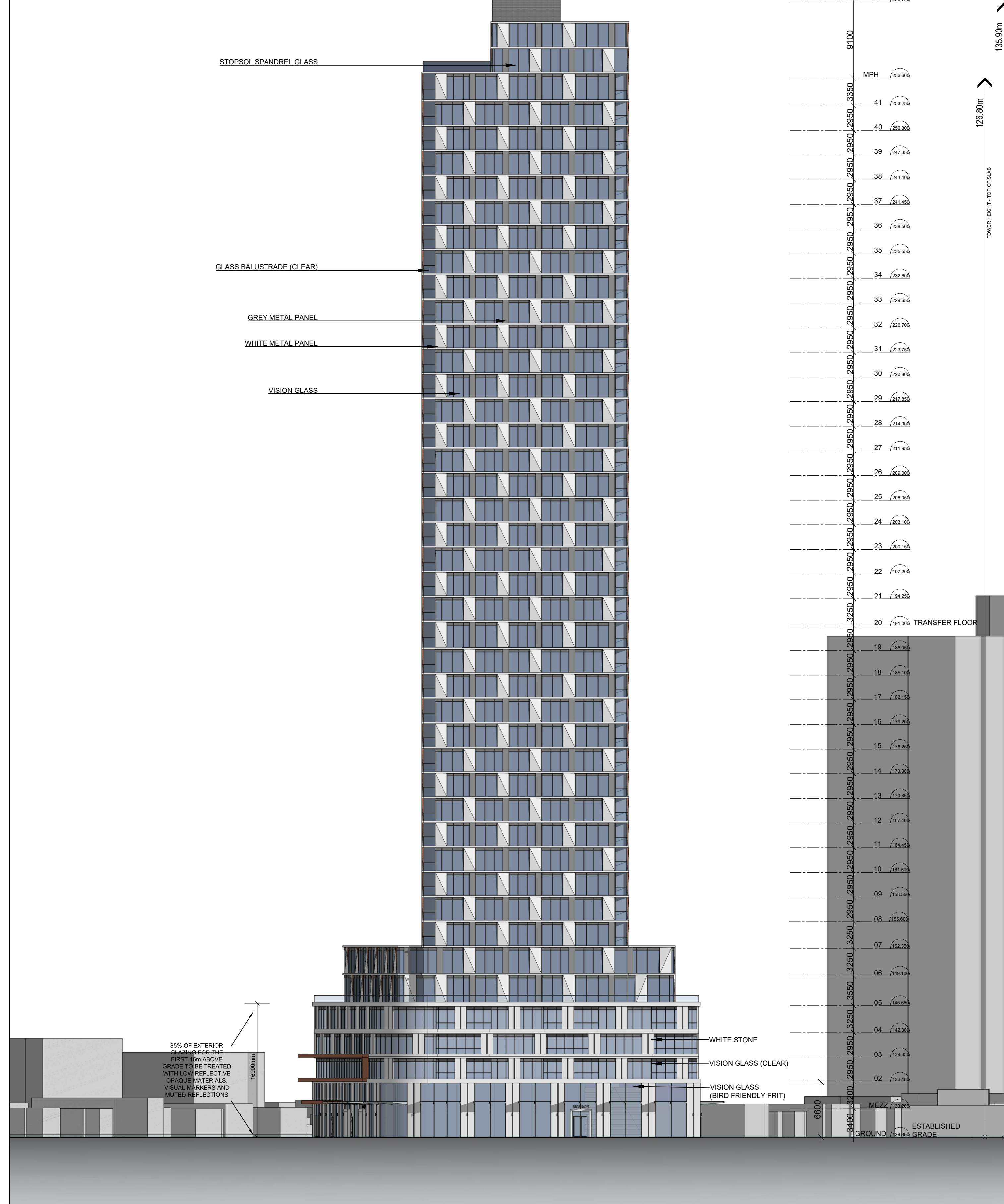


SOUTH ELEVATION



EAST ELEVATION



ISSUE		
No	DATE	DESCRIPTION
1	01 SEPT 2021	ISSUE FOR REZONING
2	08 OCT 2021	ISSUE FOR SPA
3	24 JAN 2023	RE-ISSUE FOR ZBA

GENERAL NOTES:

- DRAWINGS ARE TO BE READ IN CONJUNCTION WITH ALL OTHER CONSULTANTS' DRAWINGS AND REPORTS:
- REFER TO TRAFFIC CONSULTANT'S DOCUMENTATION FOR TRAFFIC DIAGRAMS, TURNING RADII, TRAFFIC REPORT AND SITE ACCESS INFORMATION;
- REFER TO LANDSCAPE ARCHITECT'S DRAWINGS FOR LANDSCAPE INFORMATION;
- REFER TO SITE SERVICING/CIVIL ENGINEER'S DRAWINGS AND REPORTS FOR SITE SERVICING AND UTILITY INFORMATION;
- REFER TO LETTER FROM STRUCTURAL ENGINEER FOR DRIVEWAYS, PASSAGE WAYS AND LOADING SPACE WHERE THEY ARE LOCATED OVER A SUPPORTED STRUCTURE;
- ALL LOADING AND UNLOADING MUST BE ACCOMMODATED ON SITE WITHIN THE LIMITS OF THE DESIGNATED LOADING SPACES. ON SITE TRAINED STAFF TO BE PRESENT DURING GARbage COLLECTION FOR MANEUVERING OF BINS AND TO ASSIST GARbage TRUCKS AND OTHER VEHICLES WITH THE BACKUP MANEUVERS FROM THE LOADING SPACE;
- ALL DRIVEWAYS AND PASSAGE WAYS FOR FIRE ACCESS ROUTE AND TO THE LOADING SPACE OVER A SUPPORTED STRUCTURE ARE TO BE CONSTRUCTED AS PER THE ONTARIO BUILDING CODE REQUIREMENTS INCLUDING ALLOWANCES FOR THE CITY OF TORONTO BULK LIFT VEHICLES;
- ALL DRIVE AISLES TO COMPLY WITH CITY/BY-LAW STANDARDS



IBI GROUP
7th Floor-55 St. Clair Avenue West
Toronto ON M4V 2Y7 Canada
tel 416 596 1930 fax 416 596 0644
ibigroup.com

COPYRIGHT:
Any reproduction or distribution for any purpose other than authorized by IBI Group is forbidden. Written dimensions shall have precedence over scaled dimensions. Contractors shall verify and be responsible for all dimensions and conditions on the job and IBI Group shall be informed of any variations from the dimensions and conditions shown on the drawing. Shop drawings shall be submitted to IBI Group for general conformance before proceeding with fabrication.

IBI GROUP ARCHITECTS (CANADA) INC.
is a member of IBI Group of companies

OWNER:
main + main

DRAWN BY: _____
DRAFTSPERSON

CHECKED BY: _____
PROJECT MANAGER / JOB CAPTAIN

PROJECT TITLE:
**PROPOSED
41 STOREY TOWER
5238 DUNDAS STREET WEST**

SHEET TITLE:
SOUTH AND EAST ELEVATIONS

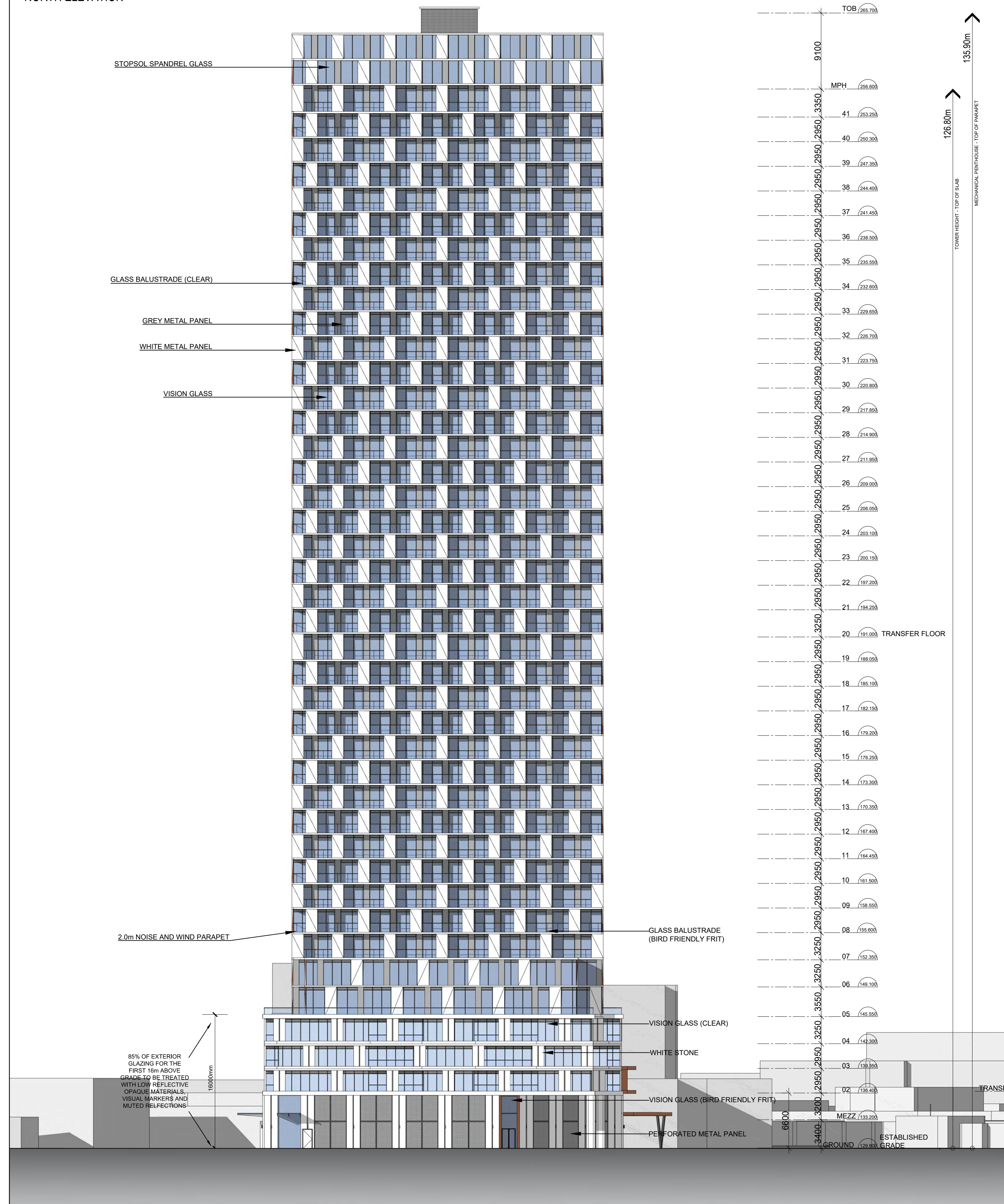
DATE:
JAN 24 2023

SCALE:
1:300

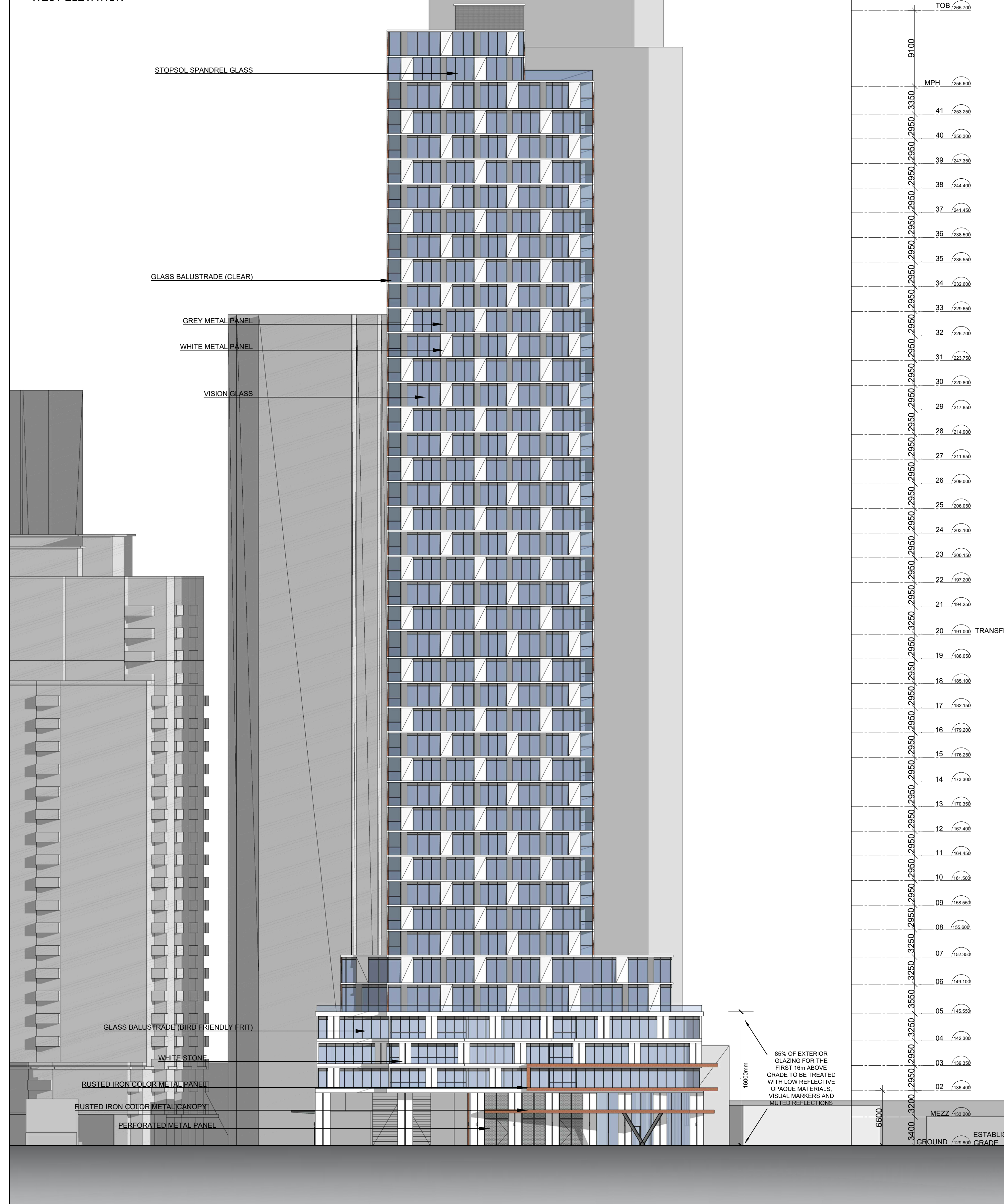
PROJECT No:
134831

DWG No:
A30

NORTH ELEVATION



WEST ELEVATION



No	DATE	DESCRIPTION
1	01 SEPT 2021	ISSUE FOR REZONING
2	08 OCT 2021	ISSUE FOR SPA
3	24 JAN 2023	RE-ISSUE FOR ZBA

GENERAL NOTES:

- DRAWINGS ARE TO BE READ IN CONJUNCTION WITH ALL OTHER CONSULTANTS' DRAWINGS AND REPORTS;
- REFER TO TRAFFIC CONSULTANT'S DOCUMENTATION FOR TRAFFIC DIAGRAMS, TURNING RADII, TRAFFIC REPORT AND SITE ACCESS INFORMATION;
- REFER TO LANDSCAPE ARCHITECT'S DRAWINGS FOR LANDSCAPE INFORMATION;
- REFER TO SITE SERVICING/CIVIL ENGINEER'S DRAWINGS AND REPORTS FOR SITE SERVICING AND UTILITY INFORMATION;
- REFER TO LETTER FROM STRUCTURAL ENGINEER FOR DRIVEWAYS, PASSAGE WAYS AND LOADING SPACE WITH IMPACT FEATURES WHERE THEY ARE LOCATED OVER A SUPPORTED STRUCTURE;
- ALL LOADING AND UNLOADING MUST BE ACCOMMODATED ON SITE WITHIN THE LIMITS OF THE DESIGNATED LOADING SPACES. ON SITE TRAINED STAFF TO BE PRESENT DURING GARBAGE COLLECTION FOR MANEUVERING OF BINS AND TO ASSIST GARBAGE TRUCKS AND OTHER VEHICLES WITH THE BACKUP MANEUVERS FROM THE LOADING SPACE;
- ALL DRIVEWAYS AND PASSAGE WAYS FOR FIRE ACCESS ROUTE AND TO THE LOADING SPACE OVER A SUPPORTED STRUCTURE ARE TO BE CONSTRUCTED AS PER THE ONTARIO BUILDING CODE REQUIREMENTS INCLUDING ALLOWANCES FOR THE CITY OF TORONTO BULK LIFT VEHICLES;
- ALL DRIVE AISLES TO COMPLY WITH CITY-BY-LAW STANDARDS



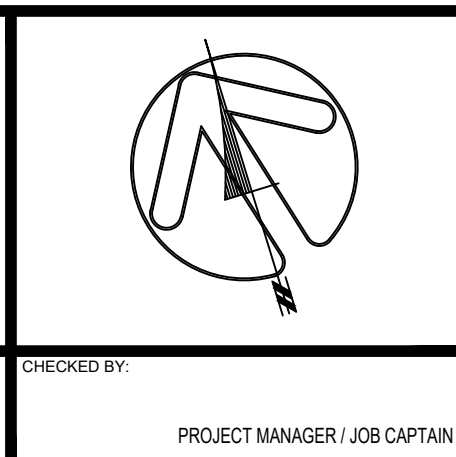
IBI GROUP
7th Floor-55 St. Clair Avenue West
Toronto ON M4V 2Y7 Canada
tel 416 596 1930 fax 416 596 0644
ibigroup.com

COPYRIGHT:
Any reproduction or distribution for any purpose other than authorized by IBI Group is forbidden. Written dimensions shall have precedence over scaled dimensions. Contractors shall verify and be responsible for all dimensions and conditions on the job and IBI Group shall be informed of any variations from the dimensions and conditions shown on the drawing. Shop drawings shall be submitted to IBI Group for general conformance before proceeding with fabrication.

IBI GROUP ARCHITECTS (CANADA) INC.
is a member of IBI Group of companies

OWNER:
main + main

DRAWN BY: _____
CHECKED BY: _____
DRAFTSPERSON
PROJECT MANAGER / JOB CAPTAIN



PROJECT TITLE:
PROPOSED
41 STOREY TOWER
5238 DUNDAS STREET WEST

SHEET TITLE:
NORTH AND WEST ELEVATIONS

DATE:
JAN 24 2023

SCALE:
1:300

PROJECT No:
134831

DWG No:
A31



ISSUE		
No	DATE	DESCRIPTION
1	01 SEPT 2021	ISSUE FOR REZONING
2	08 OCT 2021	ISSUE FOR SPA
3	24 JAN 2023	RE-ISSUE FOR ZBA

GENERAL NOTES:

- DRAWINGS ARE TO BE READ IN CONJUNCTION WITH ALL OTHER CONSULTANTS' DRAWINGS AND REPORTS;
- REFER TO TRAFFIC CONSULTANT'S DOCUMENTATION FOR TRAFFIC DIAGRAMS, TURNING RADII, TRAFFIC REPORT AND SITE ACCESS INFORMATION;
- REFER TO LANDSCAPE ARCHITECT'S DRAWINGS FOR LANDSCAPE INFORMATION;
- REFER TO SITE SERVICING/CIVIL ENGINEER'S DRAWINGS AND REPORTS FOR SITE SERVICING AND UTILITY INFORMATION;
- REFER TO LETTER FROM STRUCTURAL ENGINEER FOR DRIVEWAYS, PASSAGE WAYS AND LOADING SPACE WHERE THEY ARE LOCATED OVER A SUPPORTED STRUCTURE;
- ALL LOADING AND UNLOADING MUST BE ACCOMMODATED ON SITE WITHIN THE LIMITS OF THE DESIGNATED LOADING SPACES. ON SITE TRAINED STAFF TO BE PRESENT DURING GARBAGE COLLECTION FOR MANEUVERING OF BINS AND TO ASSIST GARBAGE TRUCKS AND OTHER VEHICLES WITH THE BACKUP MANEUVERS FROM THE LOADING SPACE;
- ALL DRIVEWAYS AND PASSAGE WAYS FOR FIRE ACCESS ROUTE AND TO THE LOADING SPACE OVER A SUPPORTED STRUCTURE ARE TO BE CONSTRUCTED AS PER THE ONTARIO BUILDING CODE REQUIREMENTS INCLUDING ALLOWANCES FOR THE CITY OF TORONTO BULK LIFT VEHICLES;
- ALL DRIVE AISLES TO COMPLY WITH CITY/BY-LAW STANDARDS



IBI GROUP
 7th Floor-55 St. Clair Avenue West
 Toronto ON M4V 2Y7 Canada
 Tel 416 596 1930 Fax 416 596 0644
 ibigroup.com

COPYRIGHT:
 Any reproduction or distribution for any purpose other than authorized by IBI Group is forbidden. Written dimensions shall have precedence over scaled dimensions. Contractors shall verify and be responsible for all dimensions and conditions on the job and IBI Group shall be informed of any variations from the dimensions and conditions shown on the drawing. Shop drawings shall be submitted to IBI Group for general conformance before proceeding with fabrication.

IBI GROUP ARCHITECTS (CANADA) INC.
 is a member of IBI Group of companies

OWNER:
main + main

DRAWN BY: _____
 DRAFTSPERSON

CHECKED BY: _____
 PROJECT MANAGER / JOB CAPTAIN

PROJECT TITLE
 PROPOSED
 41 STOREY TOWER
 5238 DUNDAS STREET WEST

SHEET TITLE
 1 : 50 ELEVATION

DATE
 JAN 24 2023

SCALE:
 1 : 50

PROJECT No:
 134831

DWG No:
 A32



ISSUE		
No	DATE	DESCRIPTION
1	01 SEPT 2021	ISSUE FOR REZONING
2	08 OCT 2021	ISSUE FOR SPA
3	24 JAN 2023	RE-ISSUE FOR ZBA

GENERAL NOTES:

- DRAWINGS ARE TO BE READ IN CONJUNCTION WITH ALL OTHER CONSULTANTS' DRAWINGS AND REPORTS;
- REFER TO TRAFFIC CONSULTANT'S DOCUMENTATION FOR TRAFFIC DIAGRAMS, TURNING RADII, TRAFFIC REPORT AND SITE ACCESS INFORMATION;
- REFER TO LANDSCAPE ARCHITECT'S DRAWINGS FOR LANDSCAPE INFORMATION;
- REFER TO SITE SERVICING/CIVIL ENGINEER'S DRAWINGS AND REPORTS FOR SITE SERVICING AND UTILITY INFORMATION;
- REFER TO LETTER FROM STRUCTURAL ENGINEER FOR DRIVEWAYS, PASSAGE WAYS AND LOADING SPACE WITH IMPACT FEATURES WHERE THEY ARE LOCATED OVER A SUPPORTED STRUCTURE;
- ALL LOADING AND UNLOADING MUST BE ACCOMMODATED ON SITE WITHIN THE LIMITS OF THE DESIGNATED LOADING SPACES. ON SITE TRAINED STAFF TO BE PRESENT DURING GARBAGE COLLECTION FOR MANEUVERING OF BINS AND TO ASSIST GARBAGE TRUCKS AND OTHER VEHICLES WITH THE BACKUP MANEUVERS /FROM THE LOADING SPACE;
- ALL DRIVEWAYS AND PASSAGE WAYS FOR FIRE ACCESS ROUTE AND TO THE THE LOADING SPACE OVER A SUPPORTED STRUCTURE ARE TO BE CONSTRUCTED AS PER THE ONTARIO BUILDING CODE REQUIREMENTS INCLUDING ALLOWANCES FOR THE CITY OF TORONTO BULK LIFT VEHICLES;
- ALL DRIVE AISLES TO COMPLY WITH CITY/BY-LAW STANDARDS



IBI GROUP
 7th Floor-55 St. Clair Avenue West
 Toronto ON M4V 2Y7 Canada
 tel 416 596 1930 fax 416 596 0644
 ibigroup.com

COPYRIGHT:
 Any reproduction or distribution for any purpose other than authorized by IBI Group is forbidden. Written dimensions shall have precedence over scaled dimensions. Contractors shall verify and be responsible for all dimensions and conditions on the job and IBI Group shall be informed of any variations from the dimensions and conditions shown on the drawing. Shop drawings shall be submitted to IBI Group for general conformance before proceeding with fabrication.

IBI GROUP ARCHITECTS (CANADA) INC.
 is a member of IBI Group of companies

OWNER:
main + main

DRAWN BY:
 DRAFTSPERSON

CHECKED BY:
 PROJECT MANAGER / JOB CAPTAIN

PROJECT TITLE
**PROPOSED
 41 STOREY TOWER
 5238 DUNDAS STREET WEST**

SHEET TITLE
1 : 50 ELEVATION

DATE
 JAN 24 2023

SCALE:
 1 : 50

PROJECT No:
134831

DWG No:
A33



ISSUE		
No	DATE	DESCRIPTION
1	01 SEPT 2021	ISSUE FOR REZONING
2	08 OCT 2021	ISSUE FOR SPA
3	24 JAN 2023	RE-ISSUE FOR ZBA

GENERAL NOTES:

- DRAWINGS ARE TO BE READ IN CONJUNCTION WITH ALL OTHER CONSULTANTS' DRAWINGS AND REPORTS:
- REFER TO TRAFFIC CONSULTANT'S DOCUMENTATION FOR TRAFFIC DIAGRAMS, TURNING RADII, TRAFFIC REPORT AND SITE ACCESS INFORMATION;
- REFER TO LANDSCAPE ARCHITECT'S DRAWINGS FOR LANDSCAPE INFORMATION;
- REFER TO SITE SERVICING/CIVIL ENGINEER'S DRAWINGS AND REPORTS FOR SITE SERVICING AND UTILITY INFORMATION;
- REFER TO LETTER FROM STRUCTURAL ENGINEER FOR DRIVEWAYS, PASSAGE WAYS AND LOADING SPACE WITH IMPACT FEATURES WHERE THEY ARE LOCATED OVER A SUPPORTED STRUCTURE;
- ALL LOADING AND UNLOADING MUST BE ACCOMMODATED ON SITE WITHIN THE LIMITS OF THE DESIGNATED LOADING SPACES. ON SITE TRAINED STAFF TO BE PRESENT DURING GARBAGE COLLECTION FOR MANEUVERING OF BINS AND TO ASSIST GARBAGE TRUCKS AND OTHER VEHICLES WITH THE BACKUP MANEUVERS /FROM THE LOADING SPACE;
- ALL DRIVEWAYS AND PASSAGE WAYS FOR FIRE ACCESS ROUTE AND TO THE THE LOADING SPACE OVER A SUPPORTED STRUCTURE ARE TO BE CONSTRUCTED AS PER THE ONTARIO BUILDING CODE REQUIREMENTS INCLUDING ALLOWANCES FOR THE CITY OF TORONTO BULK LIFT VEHICLES;
- ALL DRIVE AISLES TO COMPLY WITH CITY/BY-LAW STANDARDS



IBI GROUP
 7th Floor-55 St. Clair Avenue West
 Toronto ON M4V 2Y7 Canada
 tel 416 596 1930 fax 416 596 0644
 ibigroup.com

COPYRIGHT:
 Any reproduction or distribution for any purpose other than authorized by IBI Group is forbidden. Written dimensions shall have precedence over scaled dimensions. Contractors shall verify and be responsible for all dimensions and conditions on the job and IBI Group shall be informed of any variations from the dimensions and conditions shown on the drawing. Shop drawings shall be submitted to IBI Group for general conformance before proceeding with fabrication.

IBI GROUP ARCHITECTS (CANADA) INC.
 is a member of IBI Group of companies

OWNER:
main + main

DRAWN BY: _____
 DRAFTSPERSON

CHECKED BY: _____
 PROJECT MANAGER / JOB CAPTAIN

PROJECT TITLE
 PROPOSED
 41 STOREY TOWER
 5238 DUNDAS STREET WEST

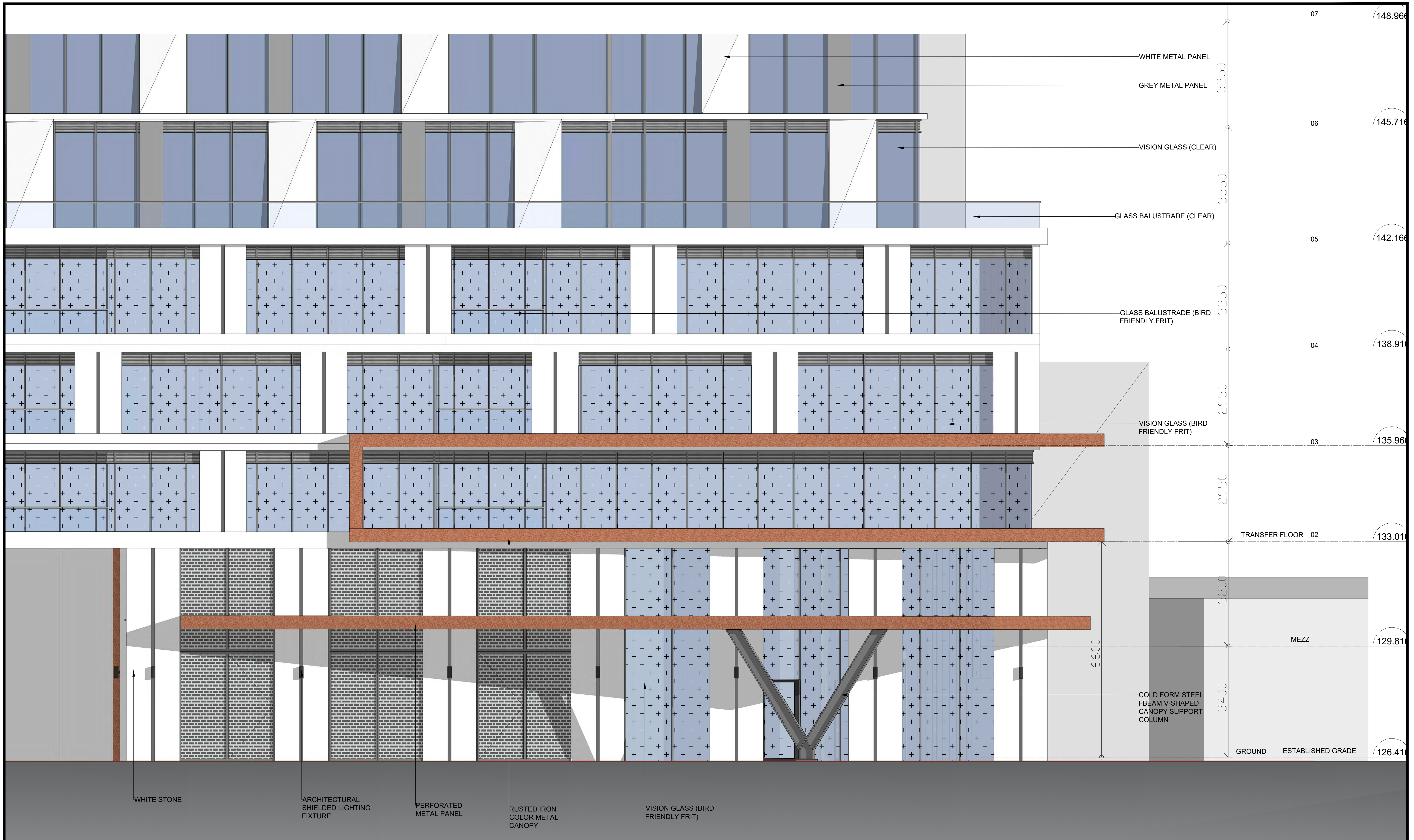
SHEET TITLE
 1 : 50 ELEVATION

DATE
 JAN 24 2023

SCALE:
 1 : 50

PROJECT No:
 134831

DWG No:
 A34



ISSUE	No	DATE	DESCRIPTION
	1	01 SEPT 2021	ISSUE FOR REZONING
	2	08 OCT 2021	ISSUE FOR SPA
	3	24 JAN 2023	RE-ISSUE FOR ZBA

GENERAL NOTES:

- DRAWINGS ARE TO BE READ IN CONJUNCTION WITH ALL OTHER CONSULTANTS' DRAWINGS AND REPORTS:
- REFER TO TRAFFIC CONSULTANT'S DOCUMENTATION FOR TRAFFIC DIAGRAMS, TURNING RADII, TRAFFIC REPORT AND SITE ACCESS INFORMATION;
- REFER TO LANDSCAPE ARCHITECT'S DRAWINGS FOR LANDSCAPE INFORMATION;
- REFER TO SITE SERVING/CIVIL ENGINEER'S DRAWINGS AND REPORTS FOR SITE SERVING AND UTILITY INFORMATION;
- REFER TO LETTER FROM STRUCTURAL ENGINEER FOR DRIVEWAYS, PASSAGE WAYS AND LOADING SPACE WITH IMPACT FEATURES WHERE THEY ARE LOCATED OVER A SUPPORTED STRUCTURE.
- ALL LOADING AND UNLOADING MUST BE ACCOMMODATED ON SITE WITHIN THE LIMITS OF THE DESIGNATED LOADING SPACES. ON SITE TRAINED STAFF TO BE PRESENT DURING GARAGE COLLECTION FOR MANEUVERING OF BINS AND TO ASSIST GARbage TRUCKS AND OTHER VEHICLES WITH THE BACKUP MANEUVERS FROM THE LOADING SPACE.
- ALL DRIVEWAYS AND PASSAGE WAYS FOR FIRE ACCESS ROUTE AND TO THE LOADING SPACE OVER A SUPPORTED STRUCTURE ARE TO BE CONSTRUCTED AS PER THE ONTARIO BUILDING CODE REQUIREMENTS INCLUDING ALLOWANCES FOR THE CITY OF TORONTO BULK LIFT VEHICLES.
- ALL DRIVE AISLES TO COMPLY WITH CITY/BY-LAW STANDARDS.



IBI GROUP
 7th Floor-55 St. Clair Avenue West
 Toronto ON M4V 2Y7 Canada
 Tel 416 596 1930 fax 416 596 0644
 ibigroup.com

COPYRIGHT:
 Any reproduction or distribution for any purpose other than authorized by IBI Group is forbidden. Written dimensions shall have precedence over scaled dimensions. Contractors shall verify and be responsible for all dimensions and conditions on the job and IBI Group shall be informed of any variations from the dimensions and conditions shown on the drawing. Shop drawings shall be submitted to IBI Group for general conformance before proceeding with fabrication.

IBI GROUP ARCHITECTS (CANADA) INC.
 is a member of IBI Group of companies

OWNER:
main + main

DRAWN BY: _____
 DRAFTSPERSON

CHECKED BY: _____
 PROJECT MANAGER / JOB CAPTAIN

PROJECT TITLE:
 PROPOSED
 41 STOREY TOWER
 5238 DUNDAS STREET WEST

SHEET TITLE:
 1 : 50 ELEVATION

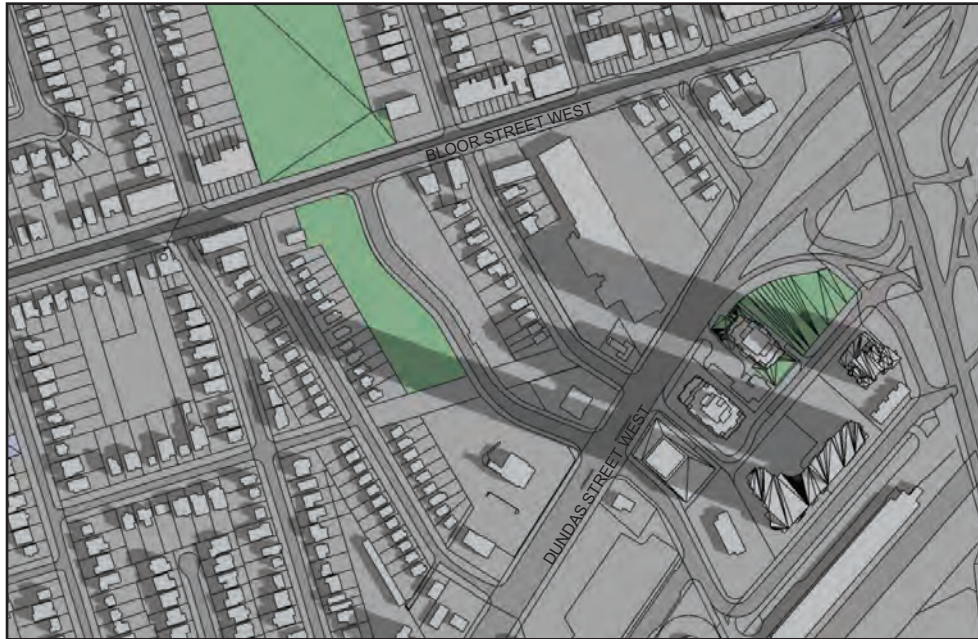
DATE:
 JAN 24 2023

SCALE:
 1 : 50

PROJECT No.:
 134831

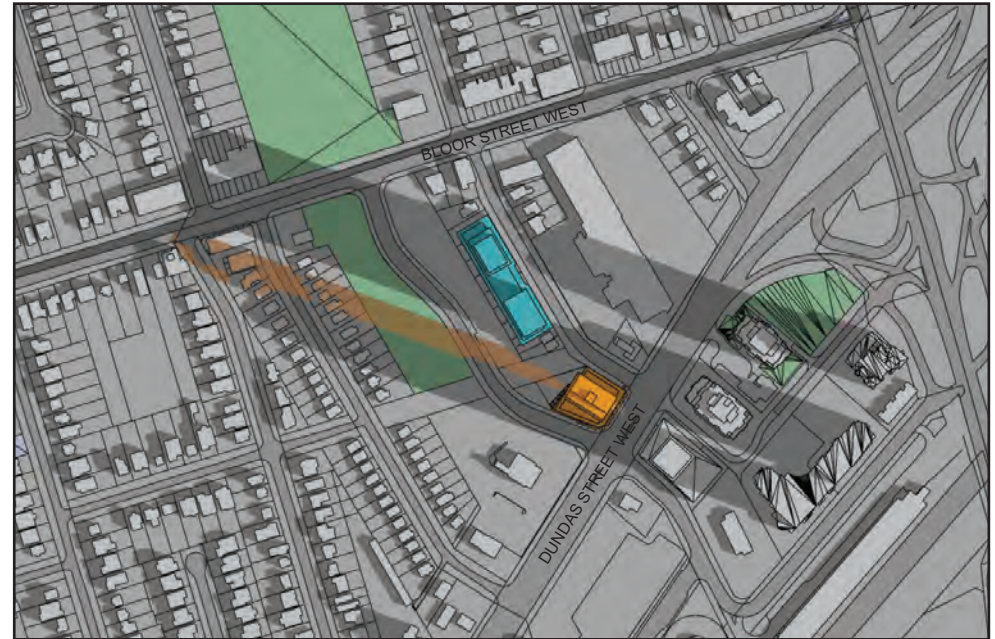
DWG No.:
 A35

EXISTING CONDITIONS







MARCH 21 - 9:18AM

PROPOSED DEVELOPMENT - 41 ST + MPH



MARCH 21 - 9:18AM

-  PROPOSED DEVELOPMENTS & SHADOW
-  APPROVED DEVELOPMENT
-  PARKS & OPEN SPACE
-  SHADOW CAST BY EXISTING, UNDER-CONSTRUCTION AND APPROVED DEVELOPMENTS

5238 DUNDAS STREET WEST
TORONTO, ONTARIO



EXISTING CONDITIONS







MARCH 21 - 10:18AM

PROPOSED DEVELOPMENT - 41 ST + MPH



MARCH 21 - 10:18AM

-  PROPOSED DEVELOPMENTS & SHADOW
-  APPROVED DEVELOPMENT
-  PARKS & OPEN SPACE
-  SHADOW CAST BY EXISTING, UNDER-CONSTRUCTION AND APPROVED DEVELOPMENTS

5238 DUNDAS STREET WEST
TORONTO, ONTARIO



EXISTING CONDITIONS







MARCH 21 - 11:18AM

PROPOSED DEVELOPMENT - 41 ST + MPH



MARCH 21 - 11:18AM

-  PROPOSED DEVELOPMENTS & SHADOW
-  APPROVED DEVELOPMENT
-  PARKS & OPEN SPACE
-  SHADOW CAST BY EXISTING, UNDER-CONSTRUCTION AND APPROVED DEVELOPMENTS

5238 DUNDAS STREET WEST
TORONTO, ONTARIO



EXISTING CONDITIONS







MARCH 21 - 12:18AM

PROPOSED DEVELOPMENT - 41 ST + MPH



MARCH 21 - 12:18AM

-  PROPOSED DEVELOPMENTS & SHADOW
-  APPROVED DEVELOPMENT
-  PARKS & OPEN SPACE
-  SHADOW CAST BY EXISTING, UNDER-CONSTRUCTION AND APPROVED DEVELOPMENTS

5238 DUNDAS STREET WEST
TORONTO, ONTARIO



EXISTING CONDITIONS







MARCH 21 - 1:18PM

PROPOSED DEVELOPMENT - 41 ST + MPH



MARCH 21 - 1:18PM

-  PROPOSED DEVELOPMENTS & SHADOW
-  APPROVED DEVELOPMENT
-  PARKS & OPEN SPACE
-  SHADOW CAST BY EXISTING, UNDER-CONSTRUCTION AND APPROVED DEVELOPMENTS

5238 DUNDAS STREET WEST
TORONTO, ONTARIO



EXISTING CONDITIONS







MARCH 21 - 2:18PM

PROPOSED DEVELOPMENT - 41 ST + MPH



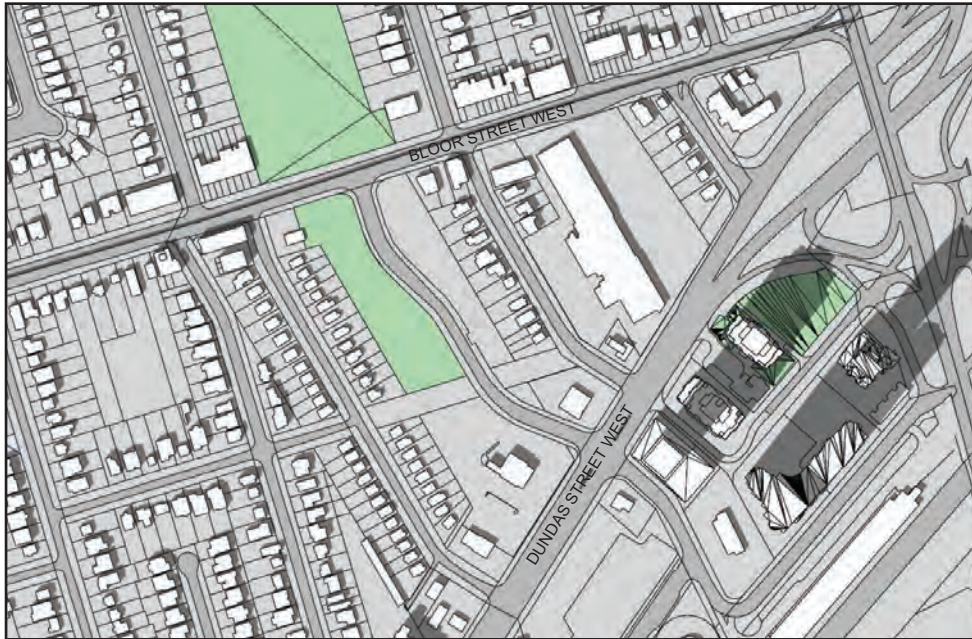
MARCH 21 - 2:18PM

-  PROPOSED DEVELOPMENTS & SHADOW
-  APPROVED DEVELOPMENT
-  PARKS & OPEN SPACE
-  SHADOW CAST BY EXISTING, UNDER-CONSTRUCTION AND APPROVED DEVELOPMENTS

5238 DUNDAS STREET WEST
TORONTO, ONTARIO



EXISTING CONDITIONS







MARCH 21 - 3:18PM

PROPOSED DEVELOPMENT - 41 ST + MPH



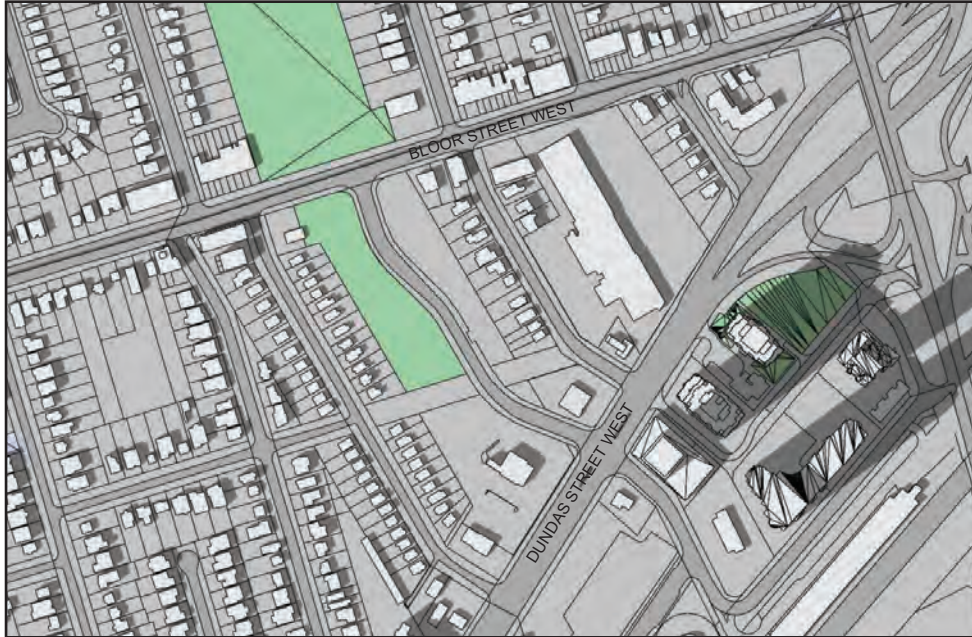
MARCH 21 - 3:18PM

-  PROPOSED DEVELOPMENTS & SHADOW
-  APPROVED DEVELOPMENT
-  PARKS & OPEN SPACE
-  SHADOW CAST BY EXISTING, UNDER-CONSTRUCTION AND APPROVED DEVELOPMENTS

5238 DUNDAS STREET WEST
TORONTO, ONTARIO



EXISTING CONDITIONS







MARCH 21 - 4:18PM

PROPOSED DEVELOPMENT - 41 ST + MPH



MARCH 21 - 4:18PM

-  PROPOSED DEVELOPMENTS & SHADOW
-  APPROVED DEVELOPMENT
-  PARKS & OPEN SPACE
-  SHADOW CAST BY EXISTING, UNDER-CONSTRUCTION AND APPROVED DEVELOPMENTS

5238 DUNDAS STREET WEST
TORONTO, ONTARIO



EXISTING CONDITIONS







MARCH 21 - 5:18PM

PROPOSED DEVELOPMENT - 41 ST + MPH



MARCH 21 - 5:18PM

-  PROPOSED DEVELOPMENTS & SHADOW
-  APPROVED DEVELOPMENT
-  PARKS & OPEN SPACE
-  SHADOW CAST BY EXISTING, UNDER-CONSTRUCTION AND APPROVED DEVELOPMENTS

5238 DUNDAS STREET WEST
TORONTO, ONTARIO



EXISTING CONDITIONS







MARCH 21 - 6:18PM

PROPOSED DEVELOPMENT - 41 ST + MPH



MARCH 21 - 6:18PM

-  PROPOSED DEVELOPMENTS & SHADOW
-  APPROVED DEVELOPMENT
-  PARKS & OPEN SPACE
-  SHADOW CAST BY EXISTING, UNDER-CONSTRUCTION AND APPROVED DEVELOPMENTS

5238 DUNDAS STREET WEST
TORONTO, ONTARIO



EXISTING CONDITIONS







JUNE 21 - 9:18AM

PROPOSED DEVELOPMENT - 41 ST + MPH



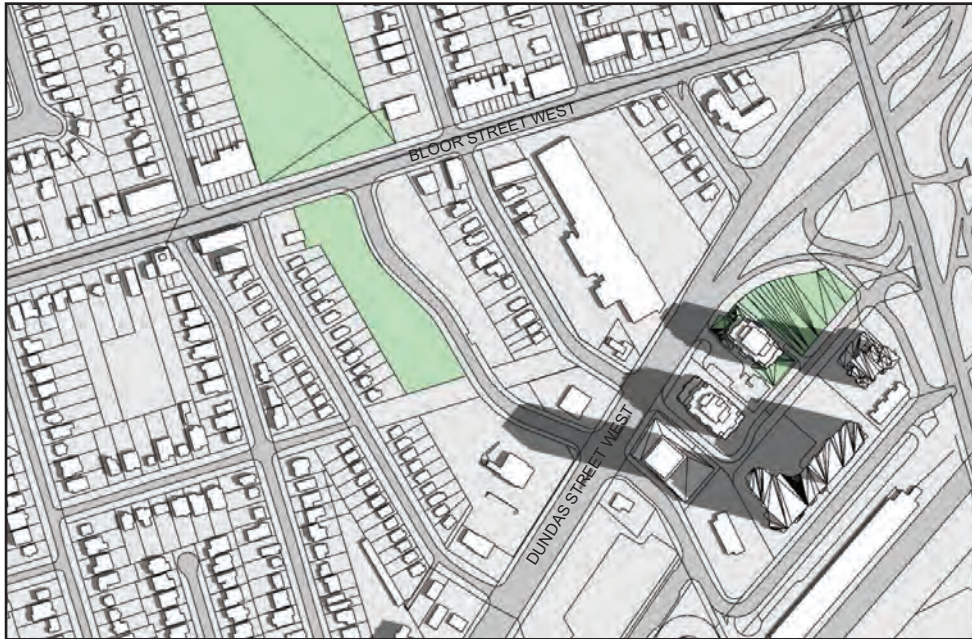
JUNE 21 - 9:18AM

-  PROPOSED DEVELOPMENTS & SHADOW
-  APPROVED DEVELOPMENT
-  PARKS & OPEN SPACE
-  SHADOW CAST BY EXISTING, UNDER-CONSTRUCTION AND APPROVED DEVELOPMENTS

5238 DUNDAS STREET WEST
TORONTO, ONTARIO

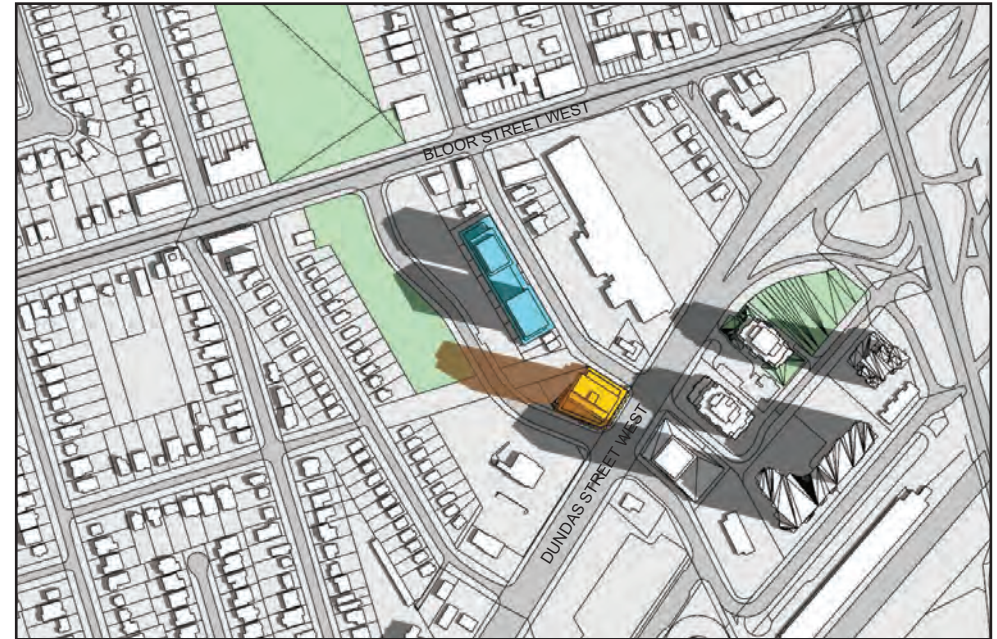


EXISTING CONDITIONS







JUNE 21 - 10:18AM

PROPOSED DEVELOPMENT - 41 ST + MPH



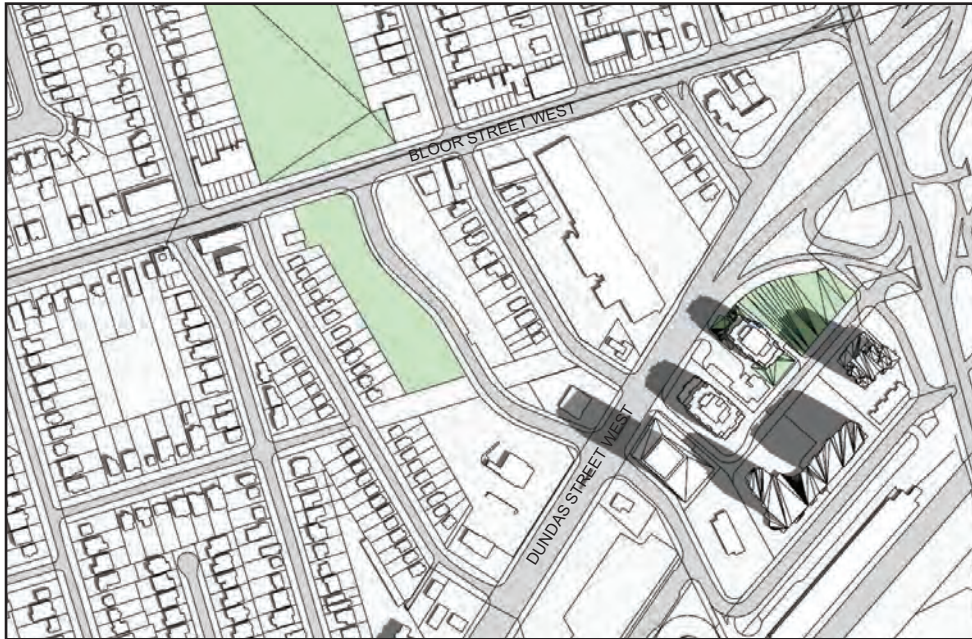
JUNE 21 - 10:18AM

-  PROPOSED DEVELOPMENTS & SHADOW
-  APPROVED DEVELOPMENT
-  PARKS & OPEN SPACE
-  SHADOW CAST BY EXISTING, UNDER-CONSTRUCTION AND APPROVED DEVELOPMENTS

5238 DUNDAS STREET WEST
TORONTO, ONTARIO

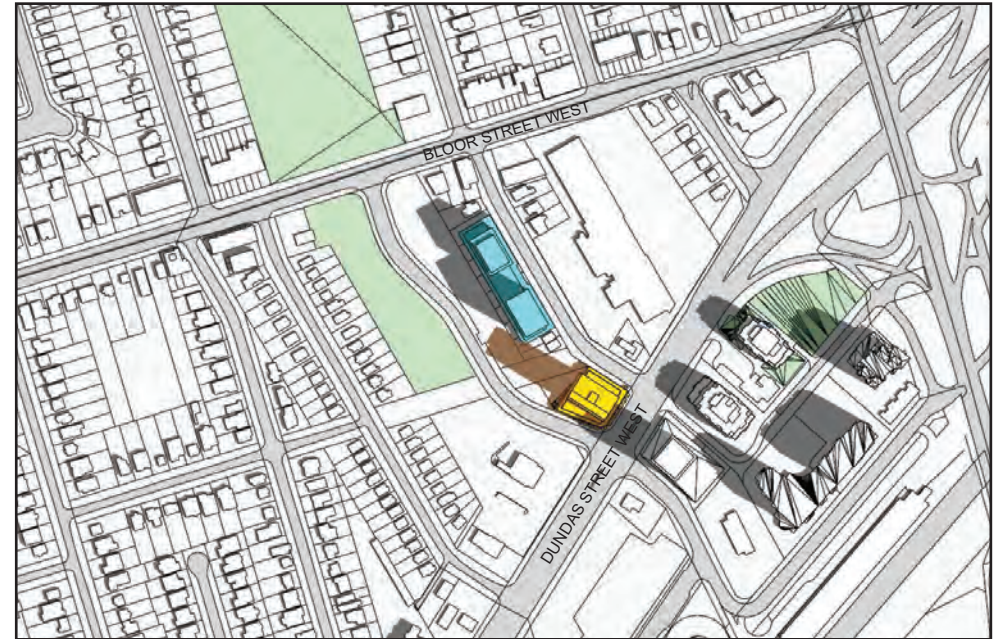


EXISTING CONDITIONS







JUNE 21 - 11:18AM

PROPOSED DEVELOPMENT - 41 ST + MPH



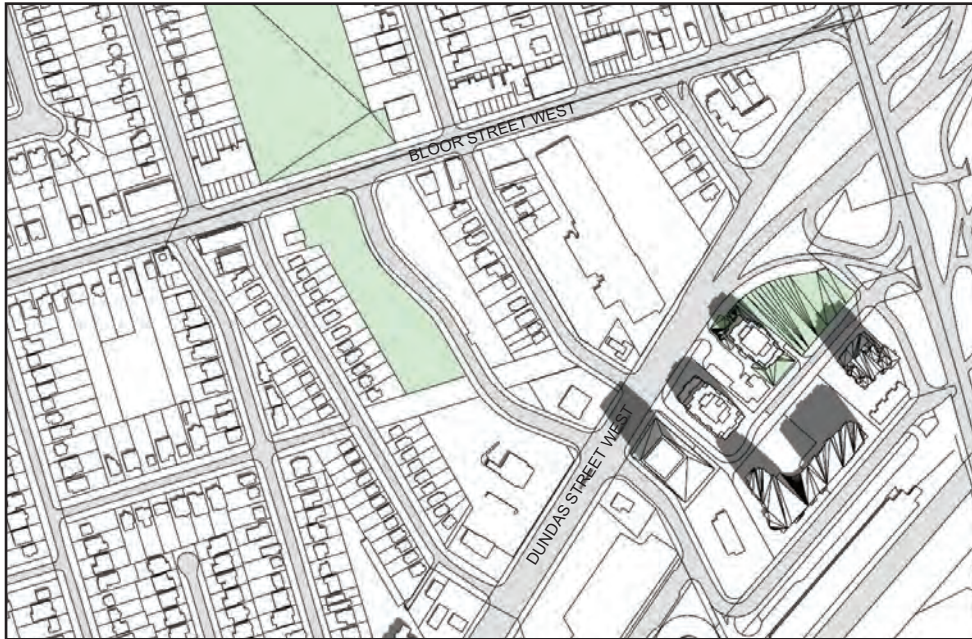
JUNE 21 - 11:18AM

-  PROPOSED DEVELOPMENTS & SHADOW
-  APPROVED DEVELOPMENT
-  PARKS & OPEN SPACE
-  SHADOW CAST BY EXISTING, UNDER-CONSTRUCTION AND APPROVED DEVELOPMENTS

5238 DUNDAS STREET WEST
TORONTO, ONTARIO

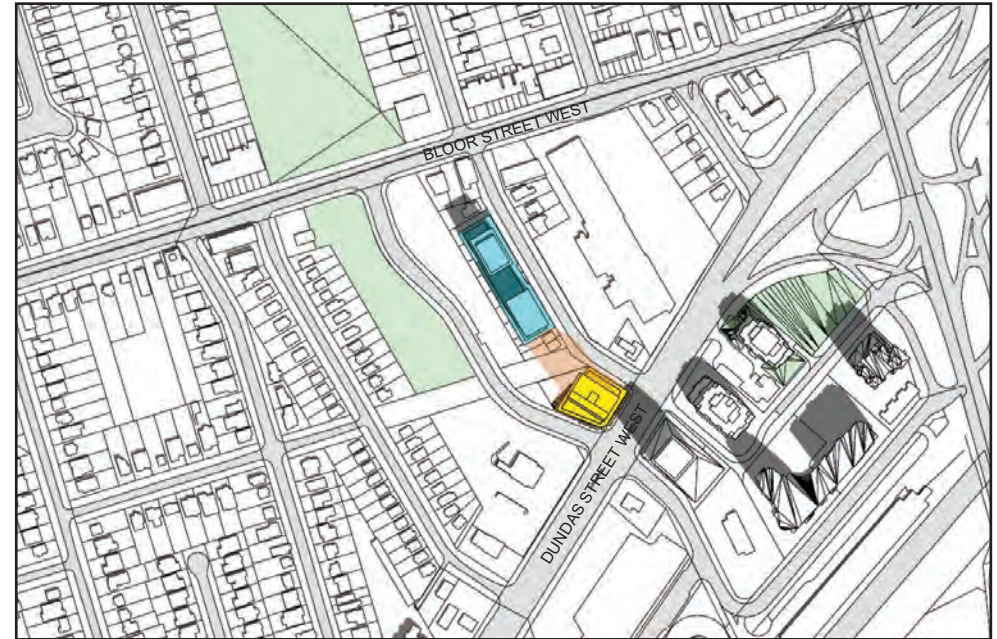


EXISTING CONDITIONS







JUNE 21 - 12:18PM

PROPOSED DEVELOPMENT - 41 ST + MPH



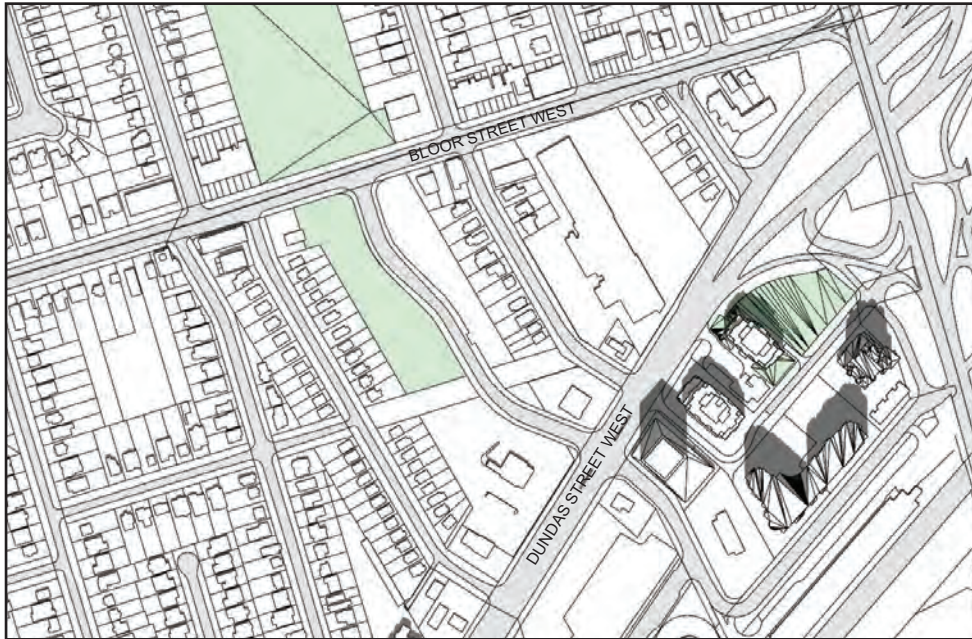
JUNE 21 - 12:18PM

-  PROPOSED DEVELOPMENTS & SHADOW
-  APPROVED DEVELOPMENT
-  PARKS & OPEN SPACE
-  SHADOW CAST BY EXISTING, UNDER-CONSTRUCTION AND APPROVED DEVELOPMENTS

5238 DUNDAS STREET WEST
TORONTO, ONTARIO

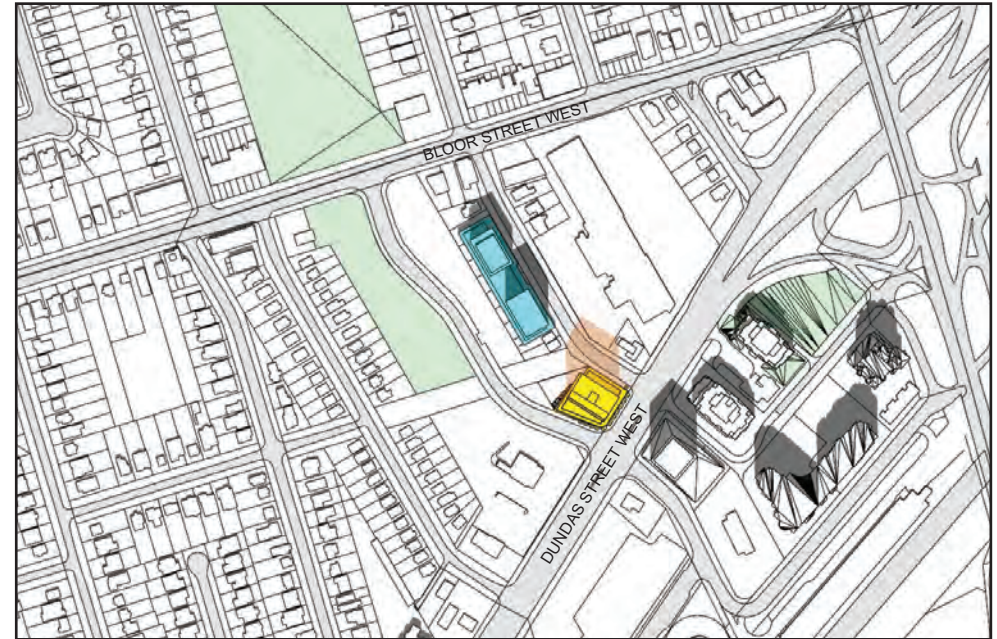


EXISTING CONDITIONS







JUNE 21 - 1:18PM

PROPOSED DEVELOPMENT - 41 ST + MPH



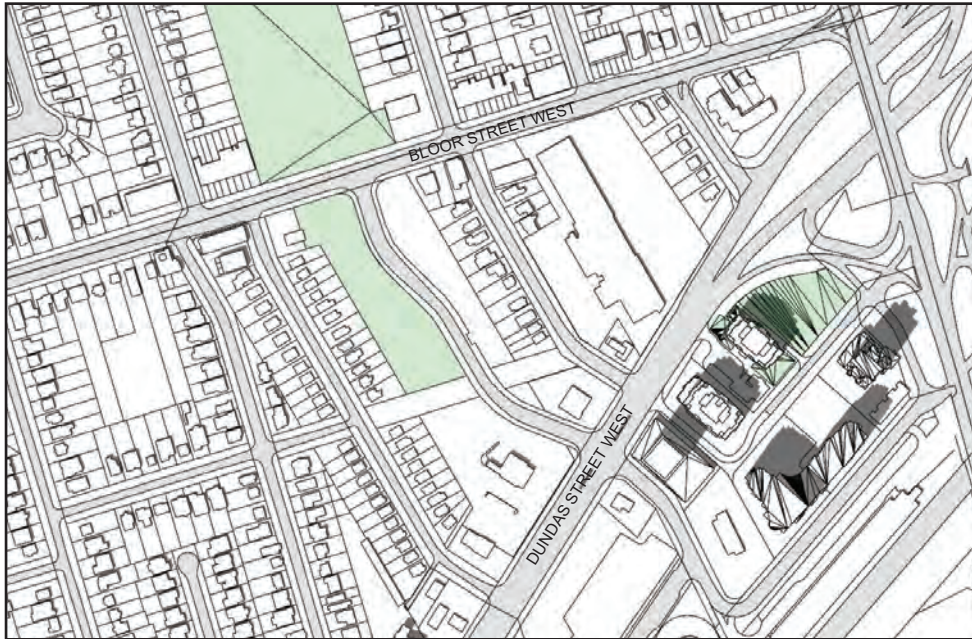
JUNE 21 - 1:18PM

-  PROPOSED DEVELOPMENTS & SHADOW
-  APPROVED DEVELOPMENT
-  PARKS & OPEN SPACE
-  SHADOW CAST BY EXISTING, UNDER-CONSTRUCTION AND APPROVED DEVELOPMENTS

5238 DUNDAS STREET WEST
TORONTO, ONTARIO

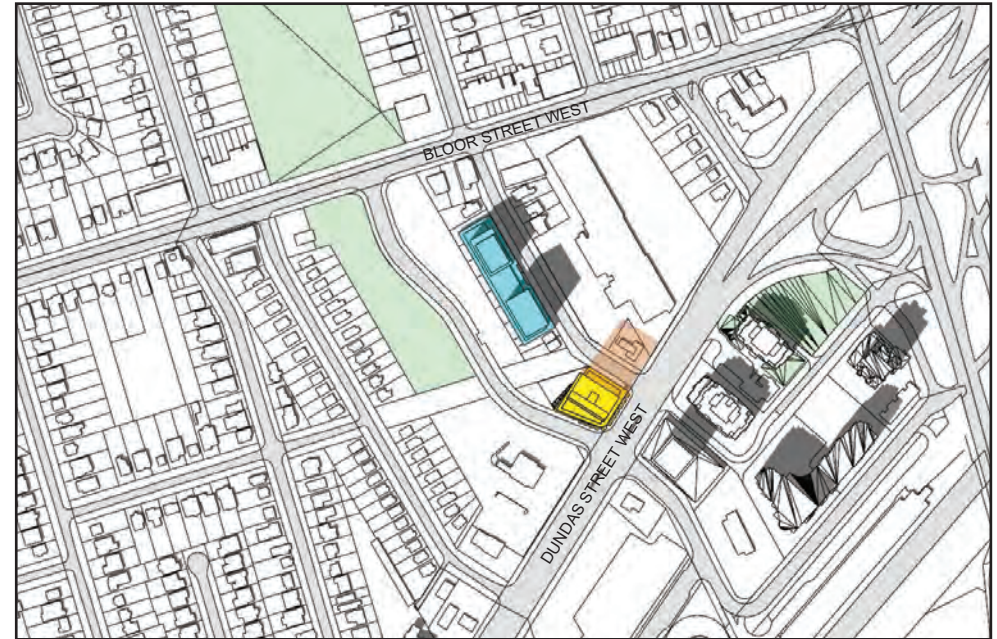


EXISTING CONDITIONS







JUNE 21 - 2:18PM

PROPOSED DEVELOPMENT - 41 ST + MPH



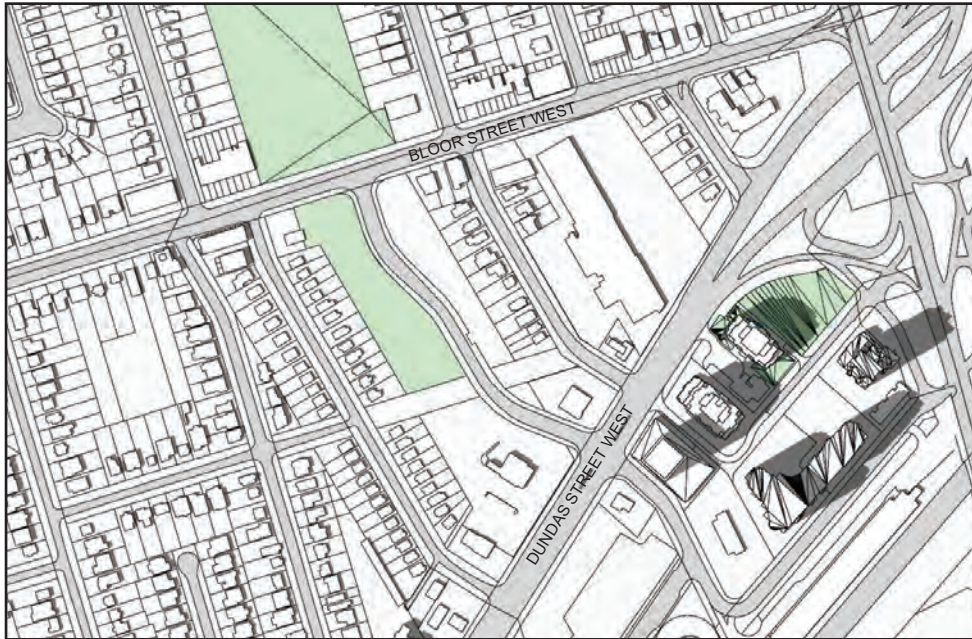
JUNE 21 - 2:18PM

-  PROPOSED DEVELOPMENTS & SHADOW
-  APPROVED DEVELOPMENT
-  PARKS & OPEN SPACE
-  SHADOW CAST BY EXISTING, UNDER-CONSTRUCTION AND APPROVED DEVELOPMENTS

5238 DUNDAS STREET WEST
TORONTO, ONTARIO

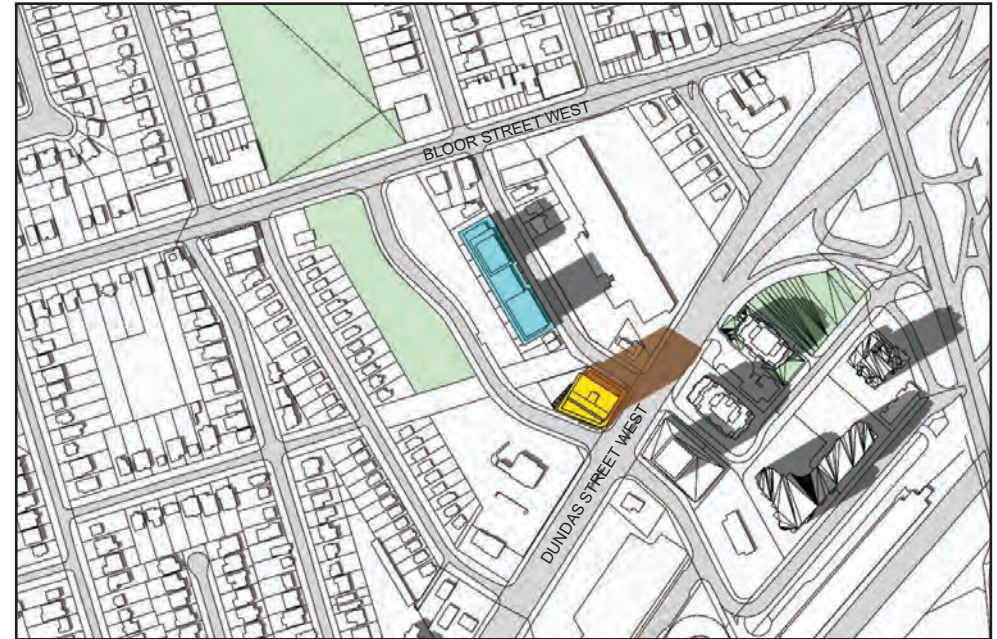


EXISTING CONDITIONS







JUNE 21 - 3:18PM

PROPOSED DEVELOPMENT - 41 ST + MPH



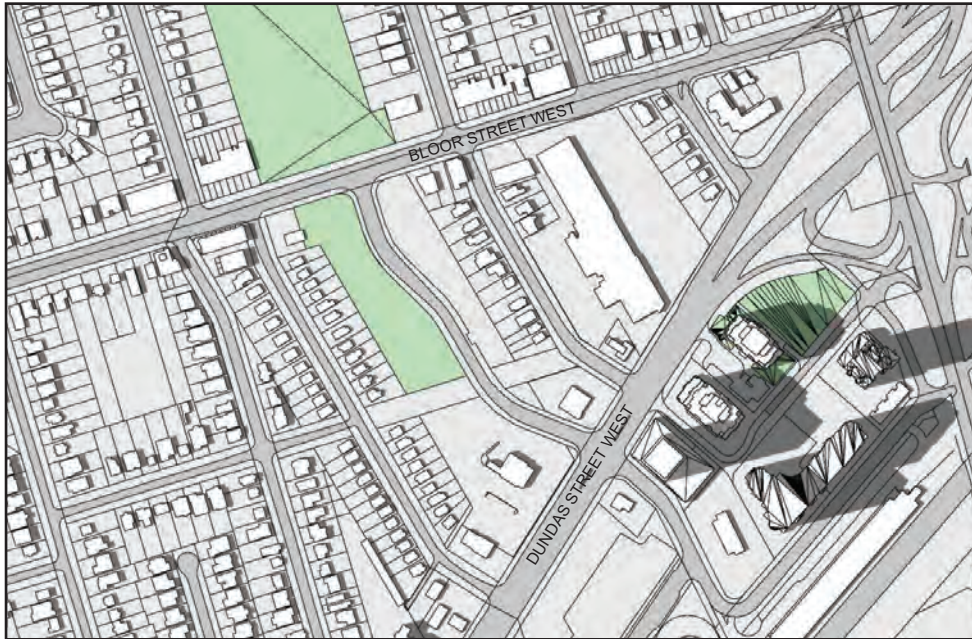
JUNE 21 - 3:18PM

-  PROPOSED DEVELOPMENTS & SHADOW
-  APPROVED DEVELOPMENT
-  PARKS & OPEN SPACE
-  SHADOW CAST BY EXISTING, UNDER-CONSTRUCTION AND APPROVED DEVELOPMENTS

5238 DUNDAS STREET WEST
TORONTO, ONTARIO

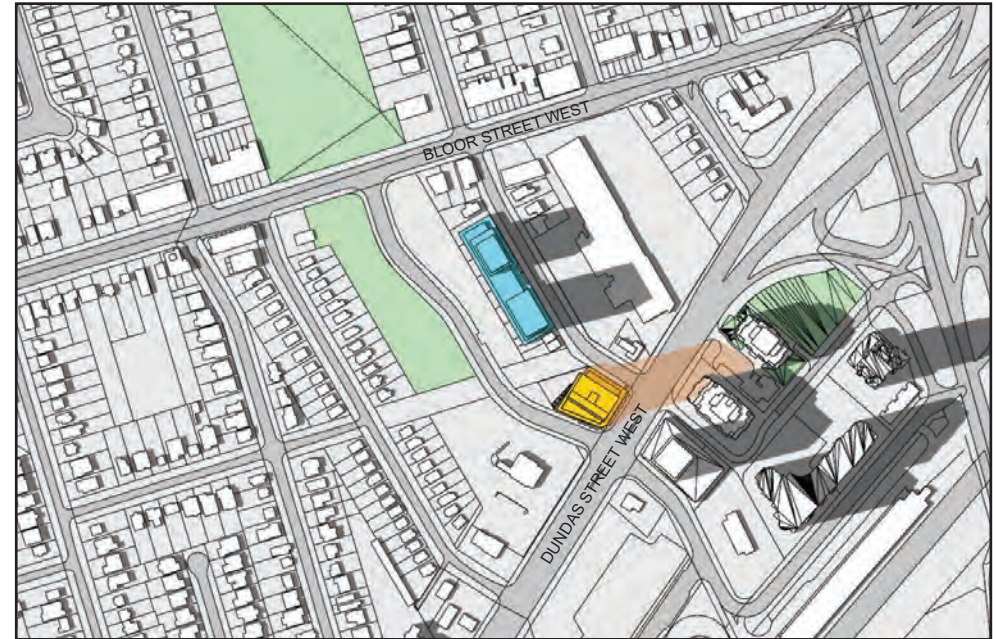


EXISTING CONDITIONS







JUNE 21 - 4:18PM

PROPOSED DEVELOPMENT - 41 ST + MPH



JUNE 21 - 4:18PM

-  PROPOSED DEVELOPMENTS & SHADOW
-  APPROVED DEVELOPMENT
-  PARKS & OPEN SPACE
-  SHADOW CAST BY EXISTING, UNDER-CONSTRUCTION AND APPROVED DEVELOPMENTS

5238 DUNDAS STREET WEST
TORONTO, ONTARIO

