

Copyright is that of the Architect.
An original of this drawing reproduced by any means from any media
without prior written approval of the Architect is to be used for
information only.
The Architect is not liable for any loss or disturbance of information
resulting from subsequent reproduction of this original drawing.

- GENERAL NOTES:**
1. Drawings are not to be scaled. Contractor will verify all existing conditions and dimensions required to perform the Work and will report any discrepancies with the Contract Documents to the Architect before commencing work.
 2. The Mechanical Drawings are to be used in conjunction with all other Contract Documents including the Project Manual and the Structural, Mechanical and Electrical Drawings. In case of difference between the Contract Documents with respect to the quantity, date or scope of work, the greater shall apply.
 3. Positions of support or finished Mechanical or Electrical devices, Wiring and Piping are indicated on the Mechanical Drawings. Locations shown on the Architectural Drawings and given own Mechanical and Electrical Drawings. Mechanical and Electrical items not clearly located will be located as directed by the Architect.
 4. Dimensions indicated on a plan between the faces of finished surfaces unless otherwise noted.
 5. The architect has not been retained for supervision of construction and assumes no responsibility for means, methods and techniques of construction.
 6. These drawings are not to be used for construction unless specifically noted for such purpose.



TOP OF BANK STAKE OUT BY T.R.C. AUTHORITY ON SEPTEMBER 1, 2020

WITHOUT PREJUDICE

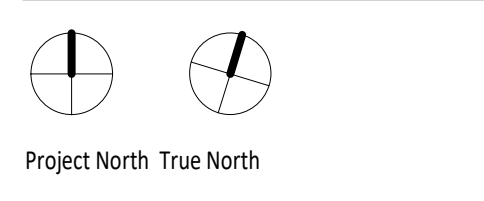
1	JAN 11 2023	OPA / REZONING APP - WITHOUT PREJUDICE
2	DEC 13 2023	OPA / REZONING APPLICATION
3	JUNE 11 2023	OPA / REZONING APPLICATION

Rev.	Date	Issued

KPMB Architects
351 King St E, Suite 1200
Toronto, ON, Canada M5A 0L6
416.977.5104

Markee Developments
Tyndale Green

3377 Bayview Ave
North York, ON M2M 3S4



Project No: 2012
Scale: 1:600
Plot Date: 01/13/2023

LEVEL 6

A106

Copyright is that of the Architect.
 An original of this drawing, reproduced by any means from any media, without prior written approval of the Architect is to be used for informational purposes only.
 The Architect is not liable for any loss or disturbance of information resulting from subsequent reproduction of this original drawing.

- GENERAL NOTES:**
1. Drawings are not to be scaled. Contractor will verify all existing conditions and dimensions required to perform the Work and will report any discrepancies with the Contract Documents to the Architect before commencing work.
 2. The Mechanical Drawings are to be read in conjunction with all other Contract Documents including the Project Manual and the Structural, Mechanical and Electrical Drawings. In case of difference between the Contract Documents with respect to the quantity, date or scope of work, the greater shall apply.
 3. Positions of support or finished Mechanical or Electrical devices, Wiring and Piping are indicated on the Mechanical Drawings. Locations shown on the Architectural Drawings and given own Mechanical and Electrical Drawings. Mechanical and Electrical items not clearly located will be located as directed by the Architect.
 4. Dimensions indicated are taken between the faces of finished surfaces unless otherwise noted.
 5. The architect has not been retained for supervision of construction and assumes no responsibility for means, methods and techniques of construction.
 6. These drawings are not to be used for construction unless specifically noted for such purpose.



**WITHOUT
PREJUDICE**

1	JAN 11 2023	04A / REZONING APP - WITHOUT PREJUDICE
2	DEC 13 2022	04A / REZONING APPLICATION
3	JUNE 11 2022	04A / REZONING APPLICATION

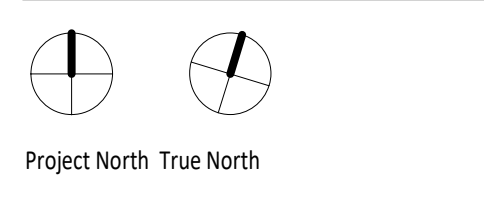
Rev.	Date	Issued



KPMB Architects
 351 King St E, Suite 1200
 Toronto, ON, Canada M5A 0L6
 416.977.5104

Markee Developments
Tyndale Green

3377 Bayview Ave
 North York, ON M2M 3S4



Project No: 2012
 Scale: 1:600
 Plot Date: 01/13/2023

LEVEL 7

A107

Copyright is that of the Architect.
 An approval of this drawing represented by any means from any means
 without prior written approval of the Architect is to be used for
 information only.
 The Architect is not liable for any loss or disturbance of information
 resulting from subsequent reproduction of this original drawing.

- GENERAL NOTES:**
1. Drawings are not to be scaled. Contractor will verify all existing conditions and dimensions required to perform the Work and will report any discrepancies with the Contract Documents to the Architect before commencing work.
 2. The Mechanical Drawings are to be read in conjunction with all other Contract Documents including the Project Manual and the Structural, Mechanical and Electrical Drawings. In case of difference between the Contract Documents with respect to the quantity, date or scope of work, the greater shall apply.
 3. Positions of support or finished Mechanical or Electrical devices, Wiring and fixtures are indicated on the Architectural Drawings. Locations shown on the Architectural Drawings shall govern over Mechanical and Electrical Drawings. Mechanical and Electrical items not clearly located will be located as directed by the Architect.
 4. Dimensions indicated are taken between the faces of finished surfaces unless otherwise noted.
 5. The architect has not been retained for supervision of construction and assumes no responsibility for means, methods and techniques of construction.
 6. These documents are not to be used for construction unless specifically noted for such purpose.



**WITHOUT
PREJUDICE**

1	JAN 11 2023	04/1 / REZONING APP - WITHOUT PREJUDICE
2	DEC 13 2023	04/1 / REZONING APPLICATION
3	JUNE 11 2023	04/1 / REZONING APPLICATION

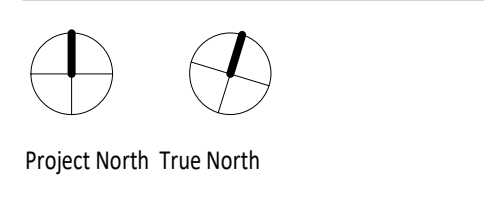
Rev.	Date	Issued



KPMB Architects
 351 King St E, Suite 1200
 Toronto, ON, Canada M5A 0L6
 416.977.5104

Markee Developments
Tyndale Green

3377 Bayview Ave
 North York, ON M2M 3S4



Project No: 2012
 Scale: 1:600
 Plot Date: 01/13/2023

LEVEL 8

A108



TOP OF BANK STAKE OUT BY T.R.C.
AUTHORITY ON SEPTEMBER 1, 2020

Copyright is that of the Architect.
Any version of this drawing reproduced by any means from any media
without prior written approval of the Architect is to be used for
information only.
The Architect is not liable for any loss or destruction of information
resulting from subsequent reproduction of this original drawing.

- GENERAL NOTES:**
1. Drawings are not to be scaled. Contractor will verify all existing conditions and dimensions required to perform the Work and will report any discrepancies with the Contract Documents to the Architect before commencing work.
 2. The Mechanical Drawings are to be read in conjunction with all other Contract Documents including the Project Manual and the Structural, Mechanical and Electrical Drawings. In case of difference between the Contractor's documents with respect to the quantity, size or scope of work, the greater shall apply.
 3. Positions of support for Mechanical or Electrical devices, Wiring and Piping are indicated on the Mechanical Drawings. Locations shown on the Architectural Drawings shall govern over Mechanical and Electrical Drawings. Mechanical and Electrical items not clearly located will be located as directed by the Architect.
 4. Dimensions indicated are taken between the faces of finished surfaces unless otherwise noted.
 5. The architect has not been retained for supervision of construction and assumes no responsibility for means, methods and techniques of construction.
 6. These documents are not to be used for construction unless specifically noted for such purpose.

**WITHOUT
PREJUDICE**

1	JAN 11 2023	OPA / FEASIBILITY STUDY - WITHOUT PREJUDICE
2	DEC 13 2022	OPA / FEASIBILITY STUDY
3	JUNE 11 2021	OPA / FEASIBILITY STUDY

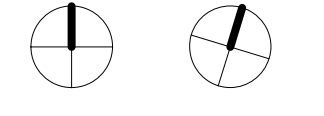
Rev.	Date	Issued



KPMB Architects
351 King St E, Suite 1200
Toronto, ON, Canada M5A 0L6
416.977.5104

Markee Developments
Tyndale Green

3377 Bayview Ave
North York, ON M2M 3S4



Project North True North

Project No: 2012
Scale: 1:600
Plot Date: 01/13/2023

LEVEL 9

A109

Copyright is that of the Architect.
 Any use of this drawing reproduced by any means from any media without prior written approval of the Architect is to be used for informational purposes only.
 The Architect is not liable for any loss or disturbance of information resulting from subsequent reproduction of this original drawing.

- GENERAL NOTES:**
1. Drawings are not to be scaled. Contractor will verify all existing conditions and dimensions required to perform the Work and will report any discrepancies with the Contract Documents to the Architect before commencing work.
 2. The Architectural Drawings are to be read in conjunction with all other Contract Documents including the Project Manual and the Structural, Mechanical and Electrical Drawings. In case of difference between the Contract Documents with respect to the quantity, date or scope of work, the greater shall apply.
 3. Positions of support or finished Mechanical or Electrical devices, Wiring and Piping are indicated on the Architectural Drawings. Locations shown on the Architectural Drawings and given over Mechanical and Electrical Drawings. Mechanical and Electrical items not clearly located will be located as directed by the Architect.
 4. Dimensions indicated are taken between the faces of finished surfaces unless otherwise noted.
 5. The architect has not been retained for supervision of construction and assumes no responsibility for means, methods and techniques of construction.
 6. These documents are not to be used for construction unless specifically noted for such purpose.



1 LEVEL 10
1:600



2 LEVEL 11
1:600



3 LEVEL 12
1:600



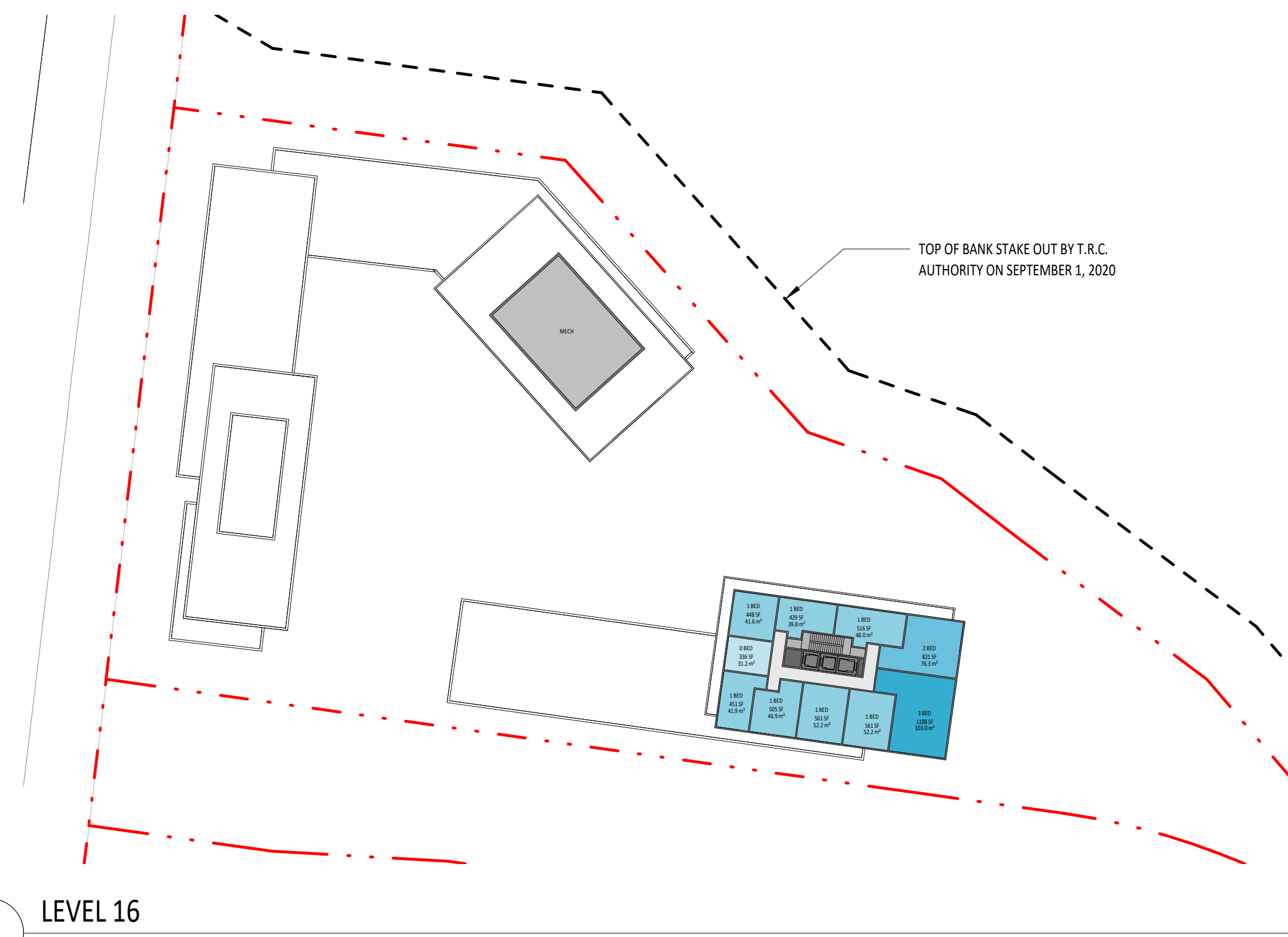
4 LEVEL 13
1:600



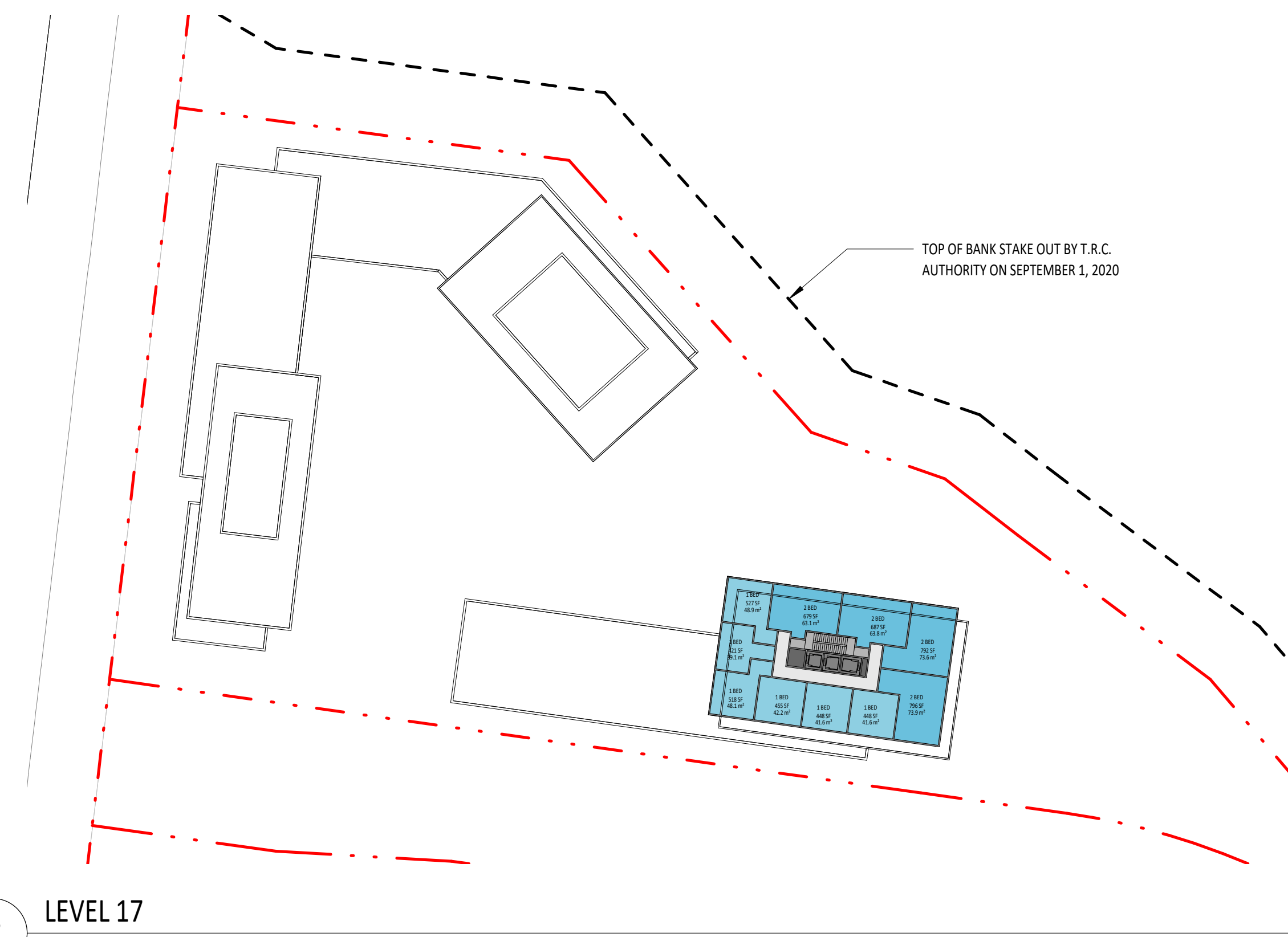
5 LEVEL 14
1:600



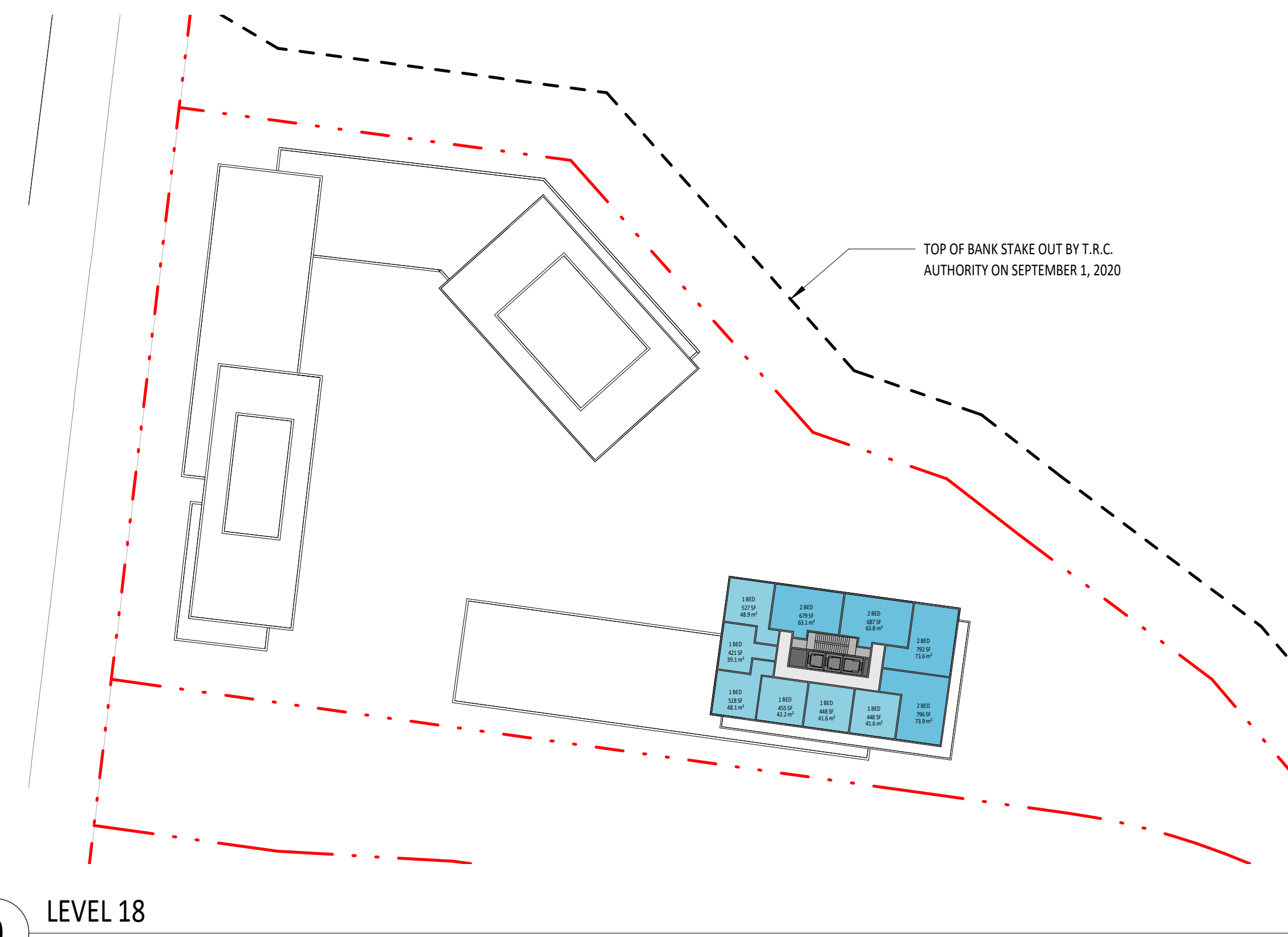
6 LEVEL 15
1:600



7 LEVEL 16
1:600



8 LEVEL 17
1:600



9 LEVEL 18
1:600

WITHOUT PREJUDICE

1	JAN 11 2021	CPA / RECORDING APP - WITHOUT PREJUDICE
2	DEC 11 2021	CPA / RECORDING APPLICATION
3	JUNE 11 2021	CPA / RECORDING APPLICATION

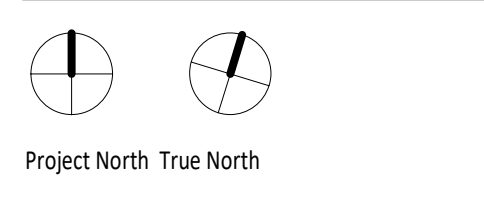
Rev.	Date	Issued



KPMB Architects
 351 King St E, Suite 1200
 Toronto, ON, Canada M5A 0L6
 416.977.5104

Markee Developments
Tyndale Green

3377 Bayview Ave
 North York, ON M2M 3S4



Project No: 2012
 Scale: 1:600
 Plot Date: 01/13/2023

LEVELS 10-18

A110

Copyright is that of the Architect.
 An original of this drawing reproduced by any means from any media without prior written approval of the Architect is to be used for informational purposes only.
 The Architect is not liable for any loss or distribution of information resulting from subsequent reproduction of this original drawing.

- GENERAL NOTES:**
1. Drawings are not to be scaled. Contractor will verify all existing conditions and dimensions required to perform the Work and will report any discrepancies with the Contract Documents to the Architect before commencing work.
 2. The Architectural Drawing shall be used in conjunction with all other Contract Documents including the Project Manual and the Structural, Mechanical and Electrical Drawings. In case of difference between the Contract Documents with respect to the quantity, date or scope of work, the greater shall apply.
 3. Positions of support or finished Mechanical or Electrical devices, Wiring and Piping are indicated on the Architectural Drawing. Locations shown on the Architectural Drawing shall govern over Mechanical and Electrical Drawings. Mechanical and Electrical items not clearly located will be located as directed by the Architect.
 4. Dimensions indicated are taken between the faces of finished surfaces unless otherwise noted.
 5. The architect has not been retained for supervision of construction and assumes no responsibility for means, methods and techniques of construction.
 6. These documents are not to be used for construction unless specifically noted for such purpose.



1 LEVEL 19
1:600



2 LEVEL 20
1:600



3 LEVEL 21
1:600



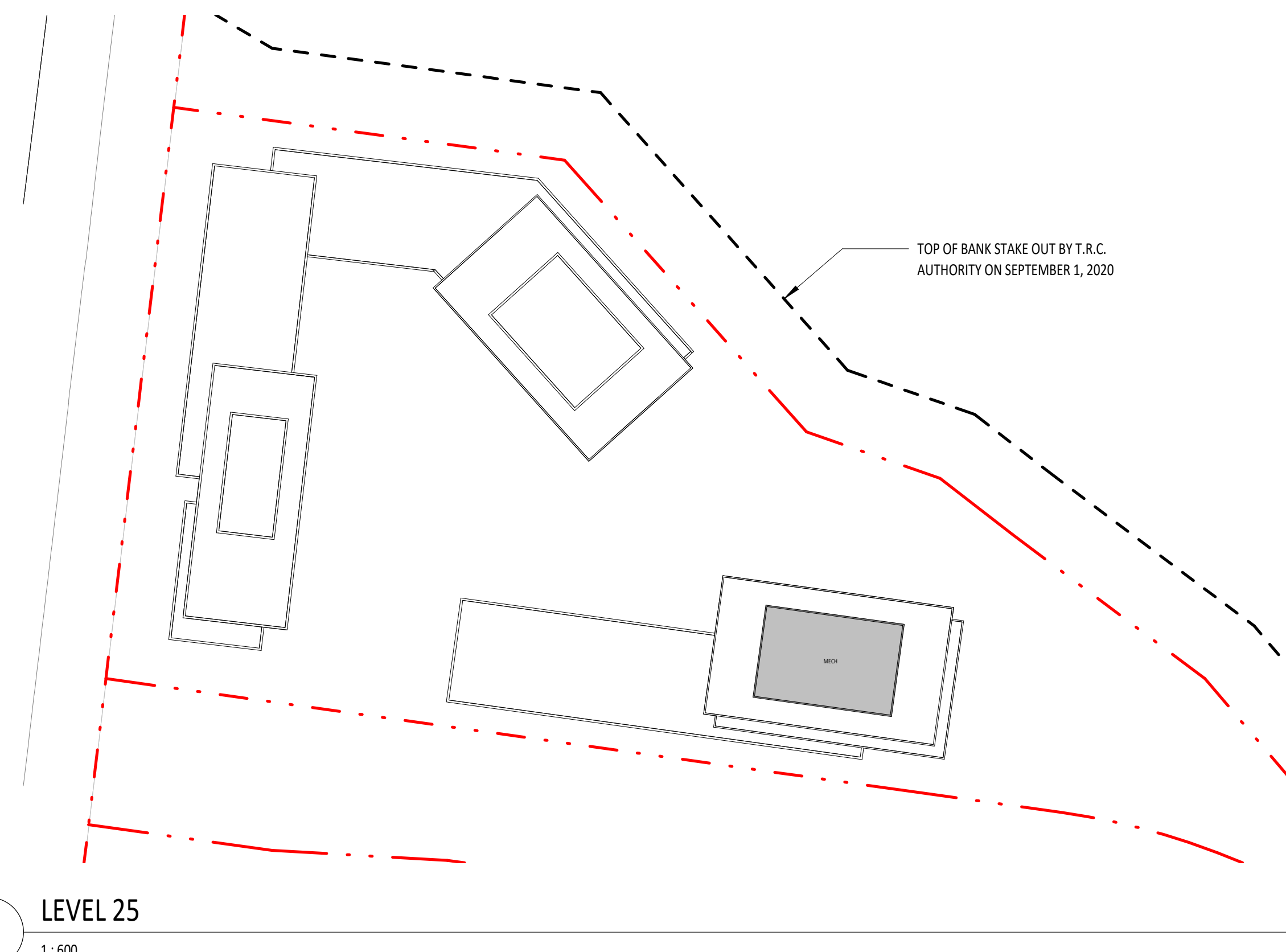
4 LEVEL 22
1:600



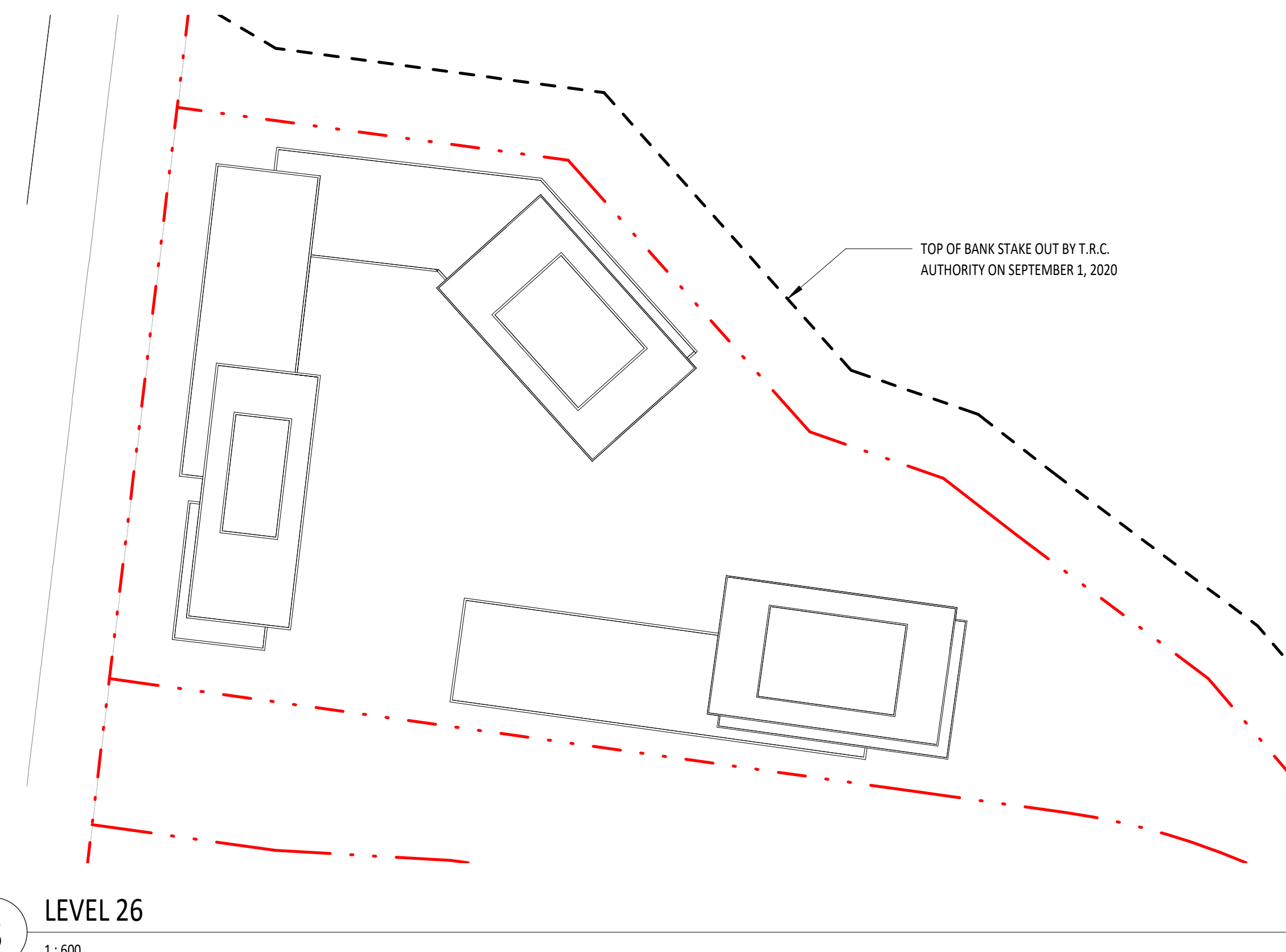
5 LEVEL 23
1:600



6 LEVEL 24
1:600



7 LEVEL 25
1:600



8 LEVEL 26
1:600

**WITHOUT
PREJUDICE**

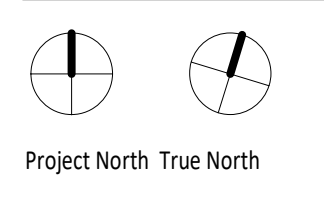
Rev.	Date	Issued
1	JAN 13 2023	04/A / REDLINING APP - WITHOUT PREJUDICE



KPMB Architects
 351 King St E, Suite 1200
 Toronto, ON, Canada M5A 0L6
 416.977.5104

Markee Developments
Tyndale Green

3377 Bayview Ave
 North York, ON M2M 3S4



Project No: 2012
 Scale: 1:600
 Plot Date: 01/13/2023

LEVELS 19-24

A111



* Please reference Key Plan for View Location on Site

3 Red Brick Finish

6 Dark Metal Finish

1 Facade Glass

4 Charcoal Brick Finish



* Please reference Key Plan for View Location on Site

1 Facade Glass

6 Dark Metal Finish

5 Modular Block Cladding

2 Composite Cladding



* Please reference Key Plan for View Location on Site

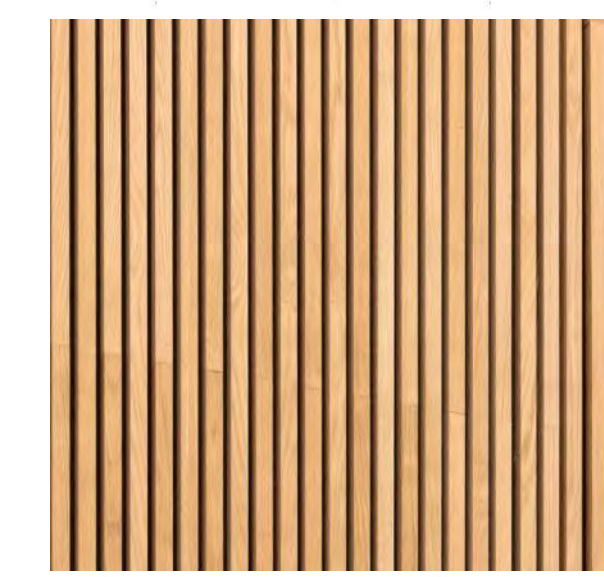


KEY PLAN
NOTE: RENDERINGS ARE PROVIDED TO INDICATE CONCEPTUAL ARCHITECTURAL EXPRESSION AND MATERIAL PALETTE ONLY. REFER TO ARCHITECTURAL PLANS AND SECTIONS FOR BUILDING LOCATIONS, HEIGHTS, AND MASSING.

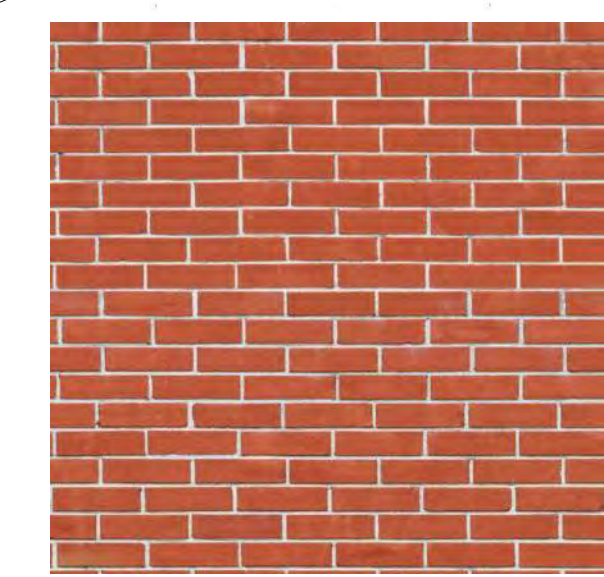
1 Facade Glass



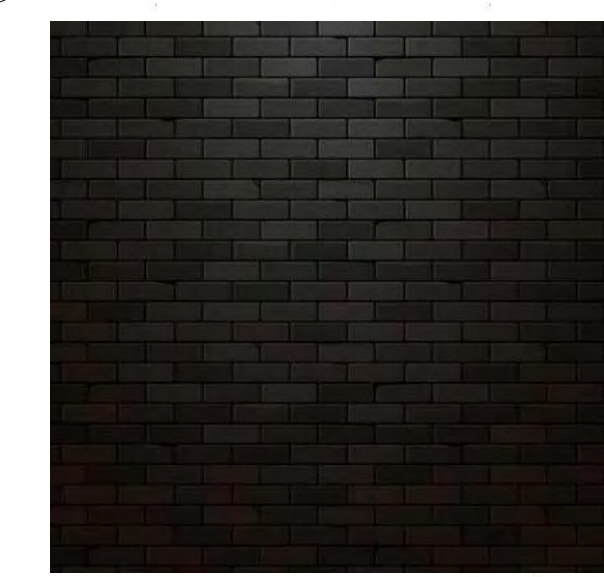
2 Composite Cladding



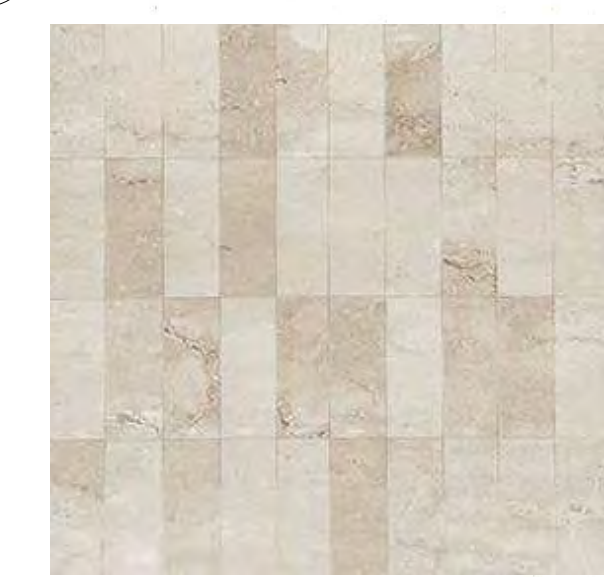
3 Red Brick Finish



4 Charcoal Brick Finish



5 Modular Block Cladding



6 Dark Metal Finish



Copyright is that of the Architect. Any version of this drawing reproduced by any means from any media without prior written approval of the Architect is to be used for informational purposes only. The Architect is not liable for any loss or distortion of information resulting from subsequent reproduction of this original drawing.

- GENERAL NOTES:**
1. Drawings are not to be scaled. Contractor will verify all existing conditions and dimensions required to perform the Work and will report any discrepancies with the Contract Documents to the Architect before commencing work.
 2. The Architect's Design Intent is to be used in conjunction with all other Contract Documents including the Project Manual and the Structural, Mechanical and Electrical Drawings. In case of discrepancy between the Contract Documents with respect to the quantity, date or scope of work, the greater shall apply.
 3. Positions of support or finished Mechanical or Electrical devices, Wiring and Piping are indicated on the Architectural Drawings. Locations shown on the Architectural Drawings shall govern over Mechanical and Electrical Drawings. Mechanical and Electrical items not clearly located will be located as directed by the Architect.
 4. Dimensions indicated are taken between the faces of finished surfaces unless otherwise noted.
 5. The architect has not been retained for supervision of construction and assumes no responsibility for means, methods and techniques of construction.
 6. These documents are not to be used for construction unless specifically noted for such purpose.

WITHOUT PREJUDICE

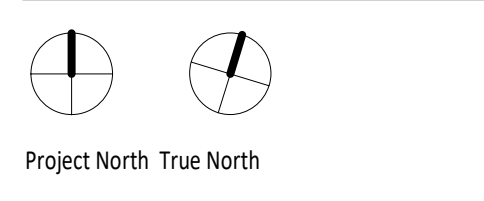
1	JAN 11 2023	04A / REZONING APP - WITHOUT PREJUDICE
2	DEC 13 2022	04A / REZONING APPLICATION
3	JUNE 11 2022	04A / REZONING APPLICATION



KPMB Architects
351 King St. E., Suite 1200
Toronto, ON, Canada M5A 0L6
416.977.5104

Markee Developments
Tyndale Green

3377 Bayview Ave
North York, ON M2M 3S4



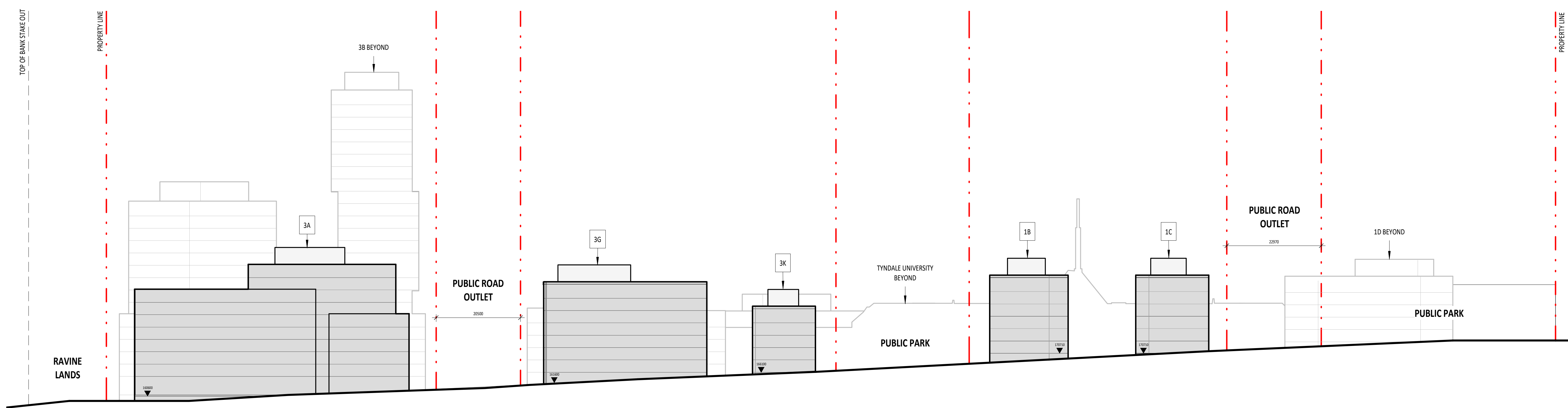
Project No: 2022
Scale: 1:2250
Plot Date: 01/13/2023

MATERIAL PALETTES

A201

Copyright is that of the Architect.
 Any use of this drawing reproduced by any means from any media without prior written approval of the Architect is to be used for informational purposes only.
 The Architect is not liable for any loss or disruption of information resulting from subsequent reproduction of this original drawing.

- GENERAL NOTES:**
1. Drawings are not to be scaled. Contractor will verify all existing conditions and dimensions required to perform the Work and will report any discrepancies with the Contract Documents to the Architect before commencing work.
 2. The Architectural Drawing may be used in conjunction with other Contract Documents including the Project Manual and the Structural, Mechanical and Electrical Drawings. In case of difference between the Contract Documents with respect to the quantity, date or scope of work, the greater shall apply.
 3. Positions of support or finished Mechanical or Electrical devices, Wiring and Piping are indicated on the Architectural Drawing. Locations shown on the Architectural Drawing shall govern over Mechanical and Electrical Drawings. Mechanical and Electrical items not clearly located will be located as directed by the Architect.
 4. Dimensions indicated are taken between the faces of finished surfaces unless otherwise noted.
 5. The architect has not been retained for supervision of construction and assumes no responsibility for means, methods and techniques of construction.
 6. These drawings are not to be used for construction unless specifically noted for such purpose.



**WITHOUT
PREJUDICE**

3	JUNE 11 2021	CPA / REZONING APP - WITHOUT PREJUDICE
2	DEC 13 2020	CPA / REZONING APPLICATION
1	JUNE 11 2021	CPA / REZONING APPLICATION

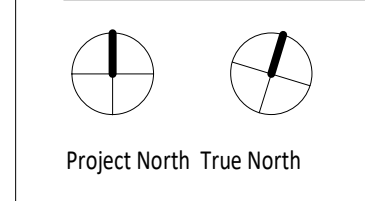
Rev. Date Issued



KPMB Architects
 351 King St E, Suite 1200
 Toronto, ON, Canada M5A 0L6
 416.977.5104

Markee Developments
Tyndale Green

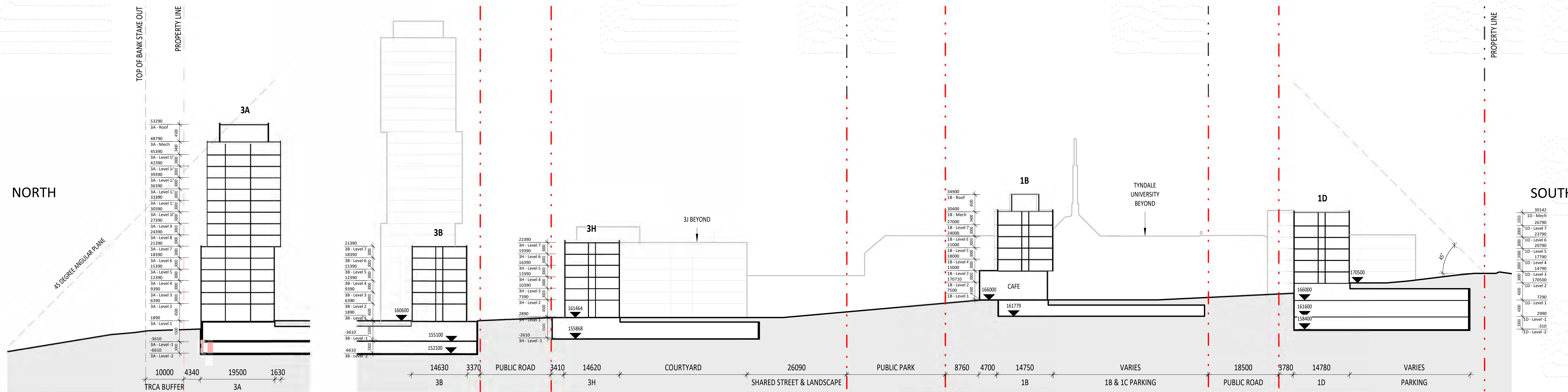
3377 Bayview Ave
 North York, ON M2M 3S4



Project No. 2012
 Scale 1:500
 Plot Date 01/13/2023

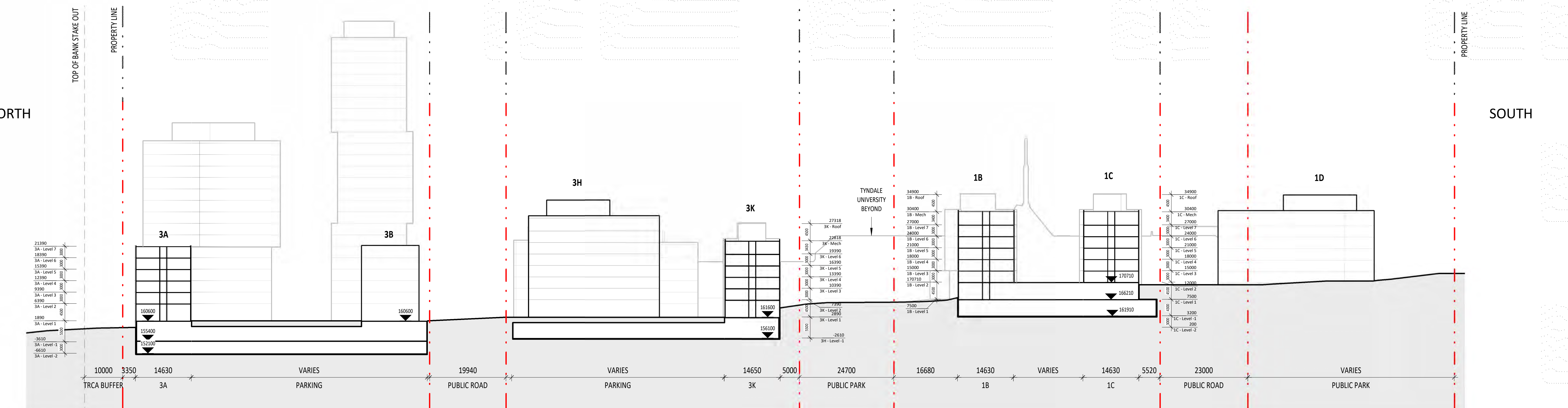
**WEST ELEVATION -
ALONG BAYVIEW AVE.**

A301

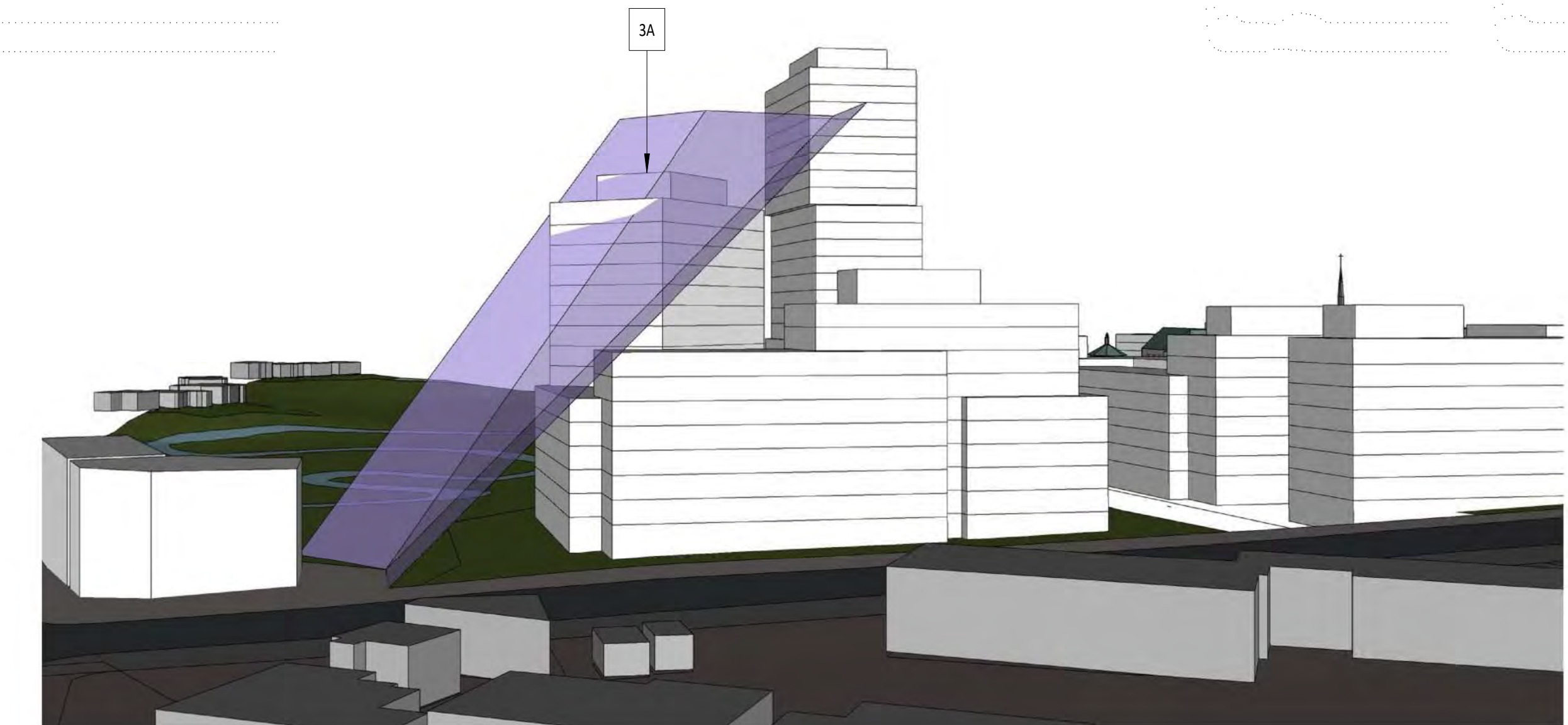


1 Section A-A'
1:500

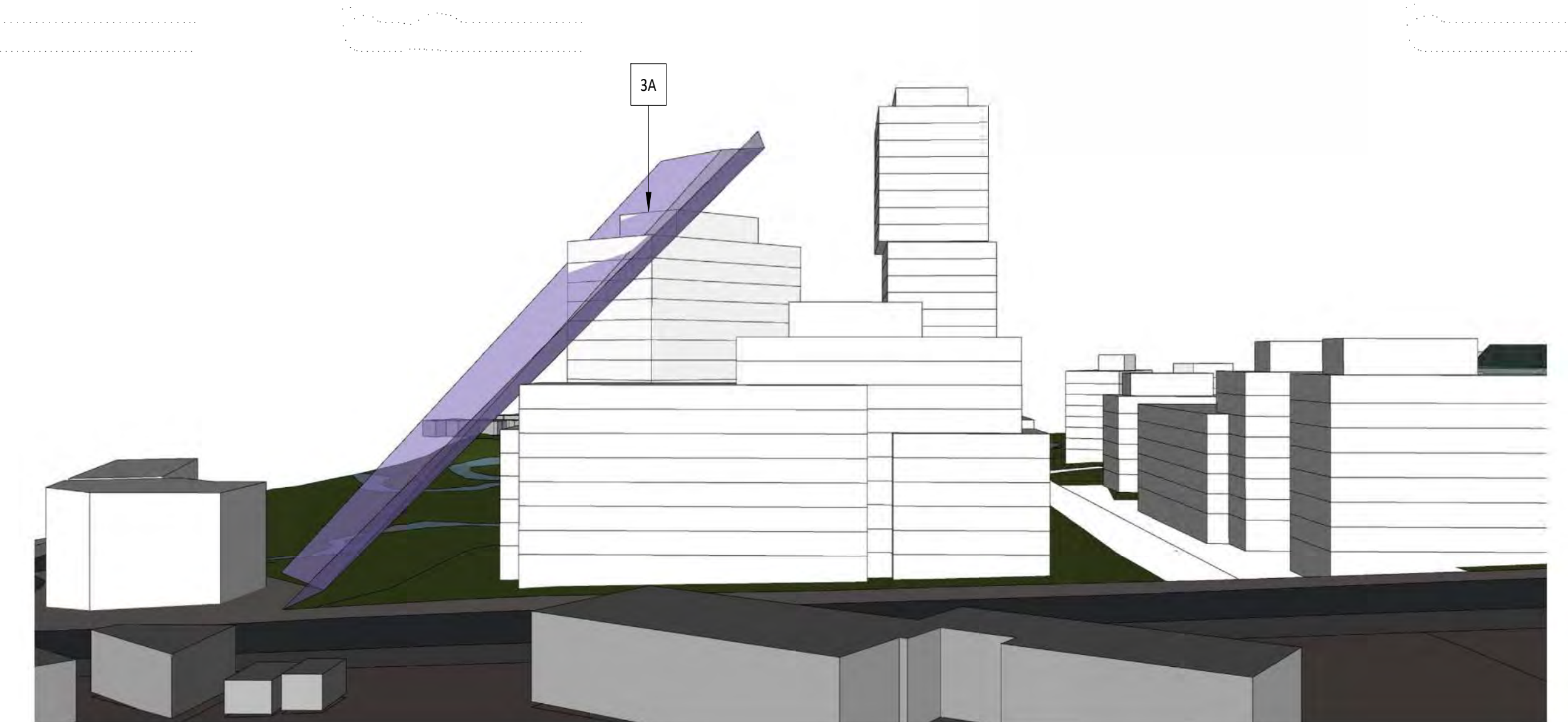
2 SECTION A1-A1'
1:500



3 Section B-B'
1:500



VIEW 1 - ANGULAR PLANE 3D VIEW



VIEW 2 - ANGULAR PLANE 3D VIEW



Copyright is that of the Architect.
An original of this drawing, reproduced by any means from any media without prior written approval of the Architect is to be used for informational purposes only.
The Architect is not liable for any loss or distortion of information resulting from subsequent reproduction of this original drawing.

GENERAL NOTES:

1. Drawings are to be used by the contractor. The contractor will verify all existing conditions and dimensions required to perform the work and will report any discrepancies with the Contract Documents to the Architect before commencing work.
2. The Architect's drawings are to be used in conjunction with all other Contract Documents including the Project Manual and the Structural, Mechanical and Electrical Drawings. In cases of difference between the Contract Documents with respect to the quantity, date or scope of work, the greater shall apply.
3. Positions of proposed or finished Mechanical or Electrical devices, Wiring and Piping are indicated on the Architectural Drawings. Locations shown on the Architectural Drawings and given own Mechanical and Electrical Drawings. Mechanical and Electrical items not clearly located will be located as directed by the Architect.
4. Dimensions indicated on a plan between the faces of finished surfaces unless otherwise noted.
5. The architect has not been retained for supervision of construction and assumes no responsibility for means, methods and techniques of construction.
6. These documents are not to be used for construction unless specifically noted for such purpose.

WITHOUT PREJUDICE

1	JAN 11 2023	CPA / REZONING APP. (WITHOUT PREJUDICE)
2	JUN 11 2023	CPA / REZONING APPLICATION
3	JUN 11 2023	CPA / REZONING APPLICATION

Rev.	Date	Issued

KPMB Architects
351 King St. E., Suite 1200
Toronto, ON, Canada M5A 0L6
416.977.5104

Markee Developments
Tyndale Green

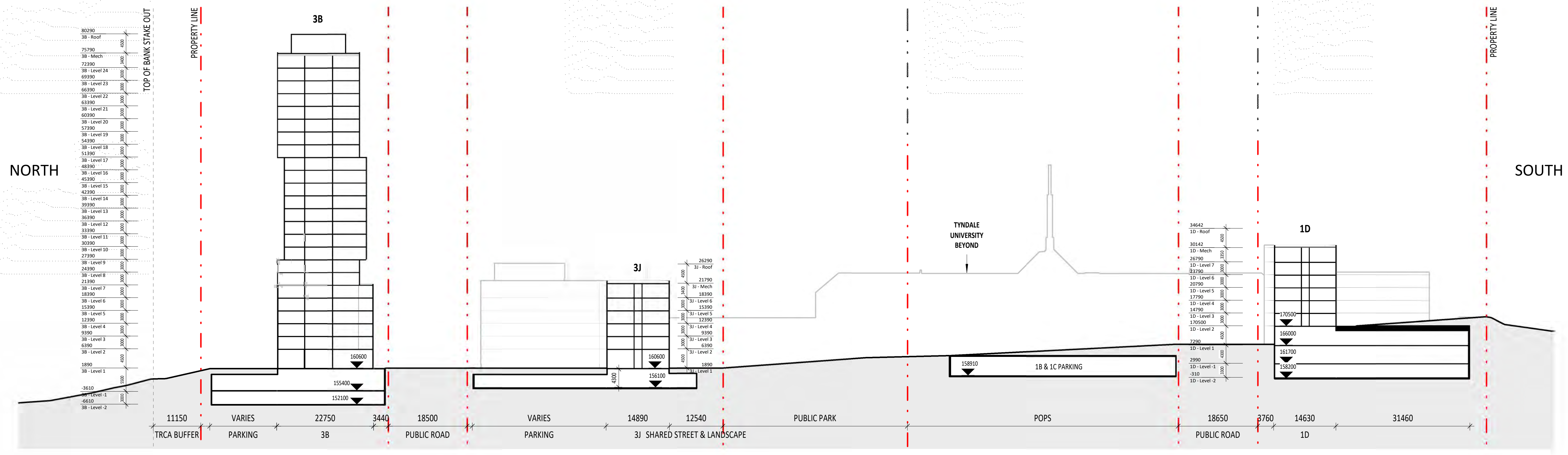
3377 Bayview Ave
North York, ON M2M 3S4

Project North True North

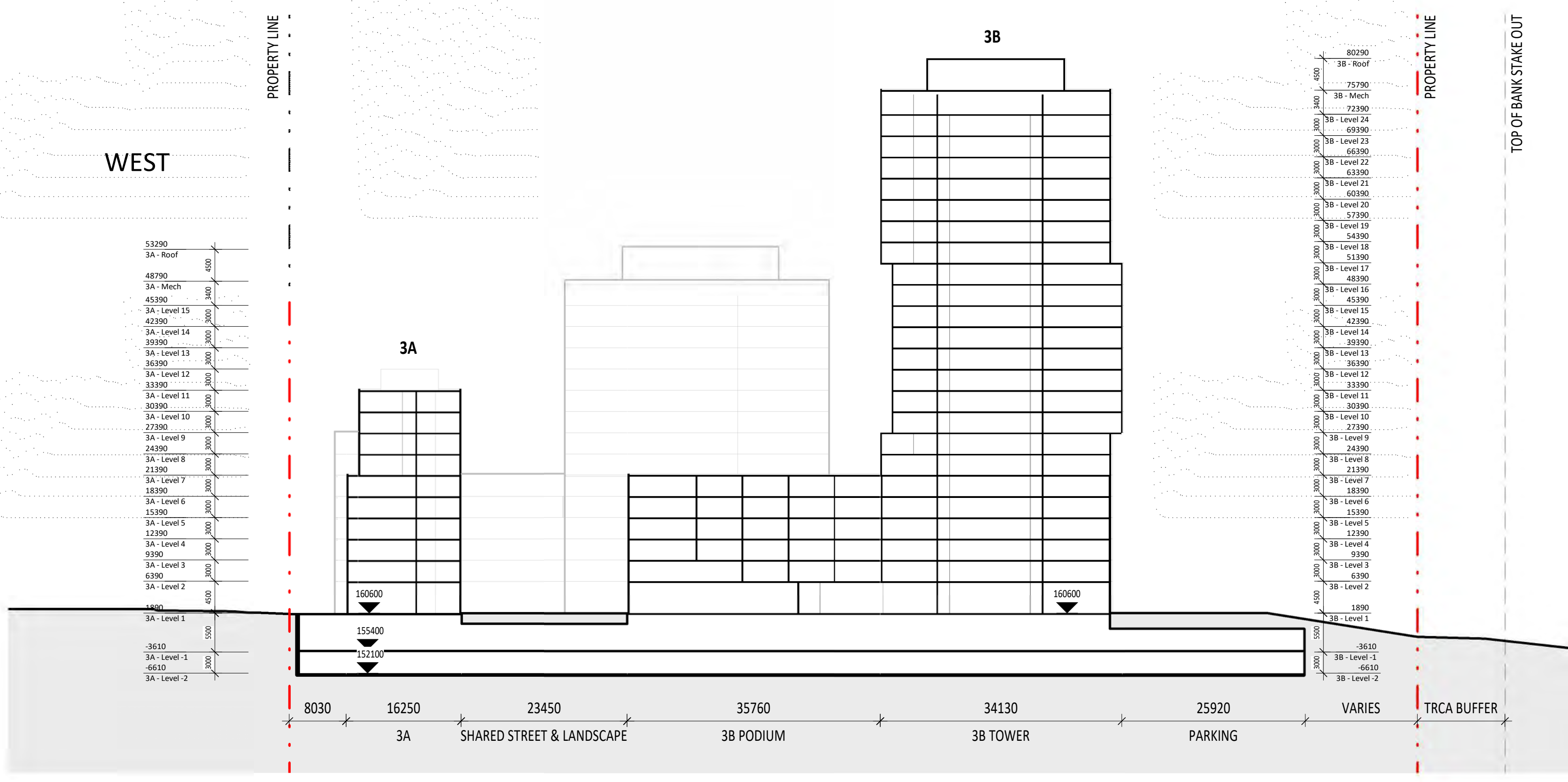
Project No. 2012
Scale As indicated
Plot Date 01/13/2023

SITE SECTIONS

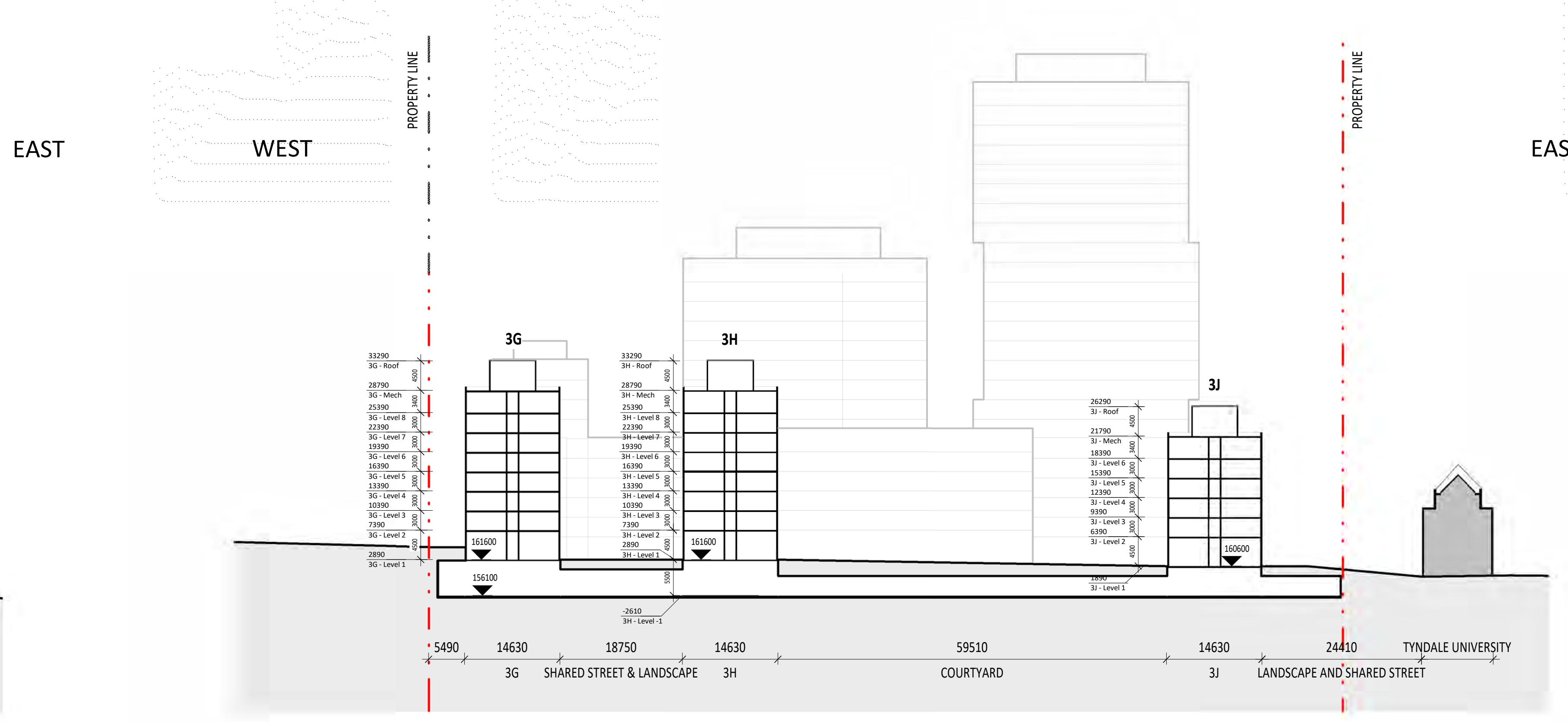
A401



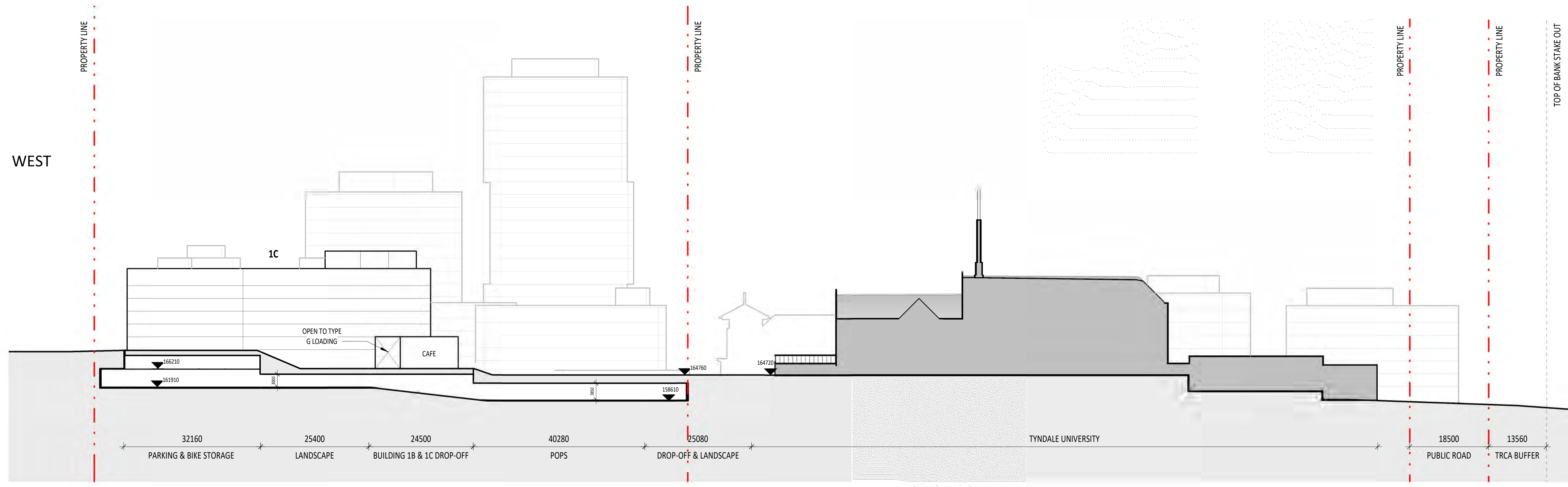
1 SECTION C-C'
1:500



2 SECTION D-D'
1:500



3 SECTION E-E'
1:500



4 SECTION F-F'
1:500



5 SITE PLAN

Copyright is that of the Architect.
 An approval of this drawing represented by any means from any media without prior written approval of the Architect is to be used for informational purposes only.
 The Architect is not liable for any loss or distortion of information resulting from subsequent reproduction of this original drawing.

GENERAL NOTES:

1. Drawings are to be used as a guide. Contractor will verify all existing conditions and dimensions required to perform the Work and will report any discrepancies to the Architect prior to the start of construction work.
2. The Architect's Drawings are to be used in conjunction with all other Contract Documents including the Project Manual and the Structural, Mechanical and Electrical Drawings. In case of discrepancy between the Contract Documents with respect to the quantity, date or scope of work, the greater shall apply.
3. Positions of support for Mechanical or Electrical devices, Wiring, and Piping are indicated on the Architectural Drawings. Locations shown on the Architectural Drawings and Government Owned Mechanical and Electrical Drawings, Mechanical and Electrical items not clearly located will be located as directed by the Architect.
4. Dimensions indicated on a plan between the faces of finished surfaces unless otherwise noted.
5. The architect has not been retained for supervision of construction and assumes no responsibility for means, methods and techniques of construction.
6. These documents are not to be used for construction unless specifically noted for such purpose.

WITHOUT PREJUDICE

1	JAN 11 2023	04 / REVISION APP - WITHOUT PREJUDICE
2	JUN 13 2023	04 / REVISION APPLICATION
3	JUNE 13 2023	04 / REVISION APPLICATION

Rev. Date Issued

KPMB Architects
 351 King St. E., Suite 1200
 Toronto, ON, Canada M5A 0L6
 416.977.5104

Markee Developments
Tyndale Green

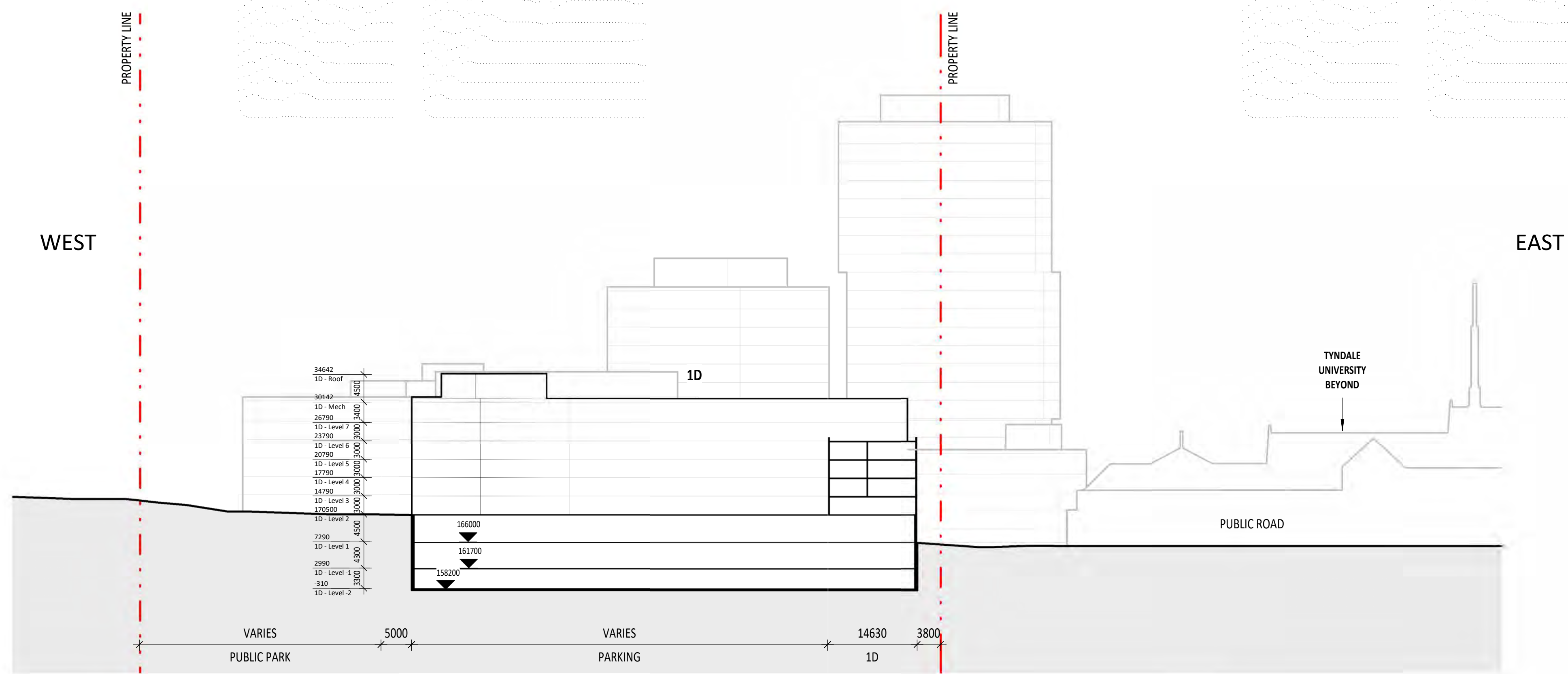
3377 Bayview Ave
 North York, ON M2M 3S4

Project North True North

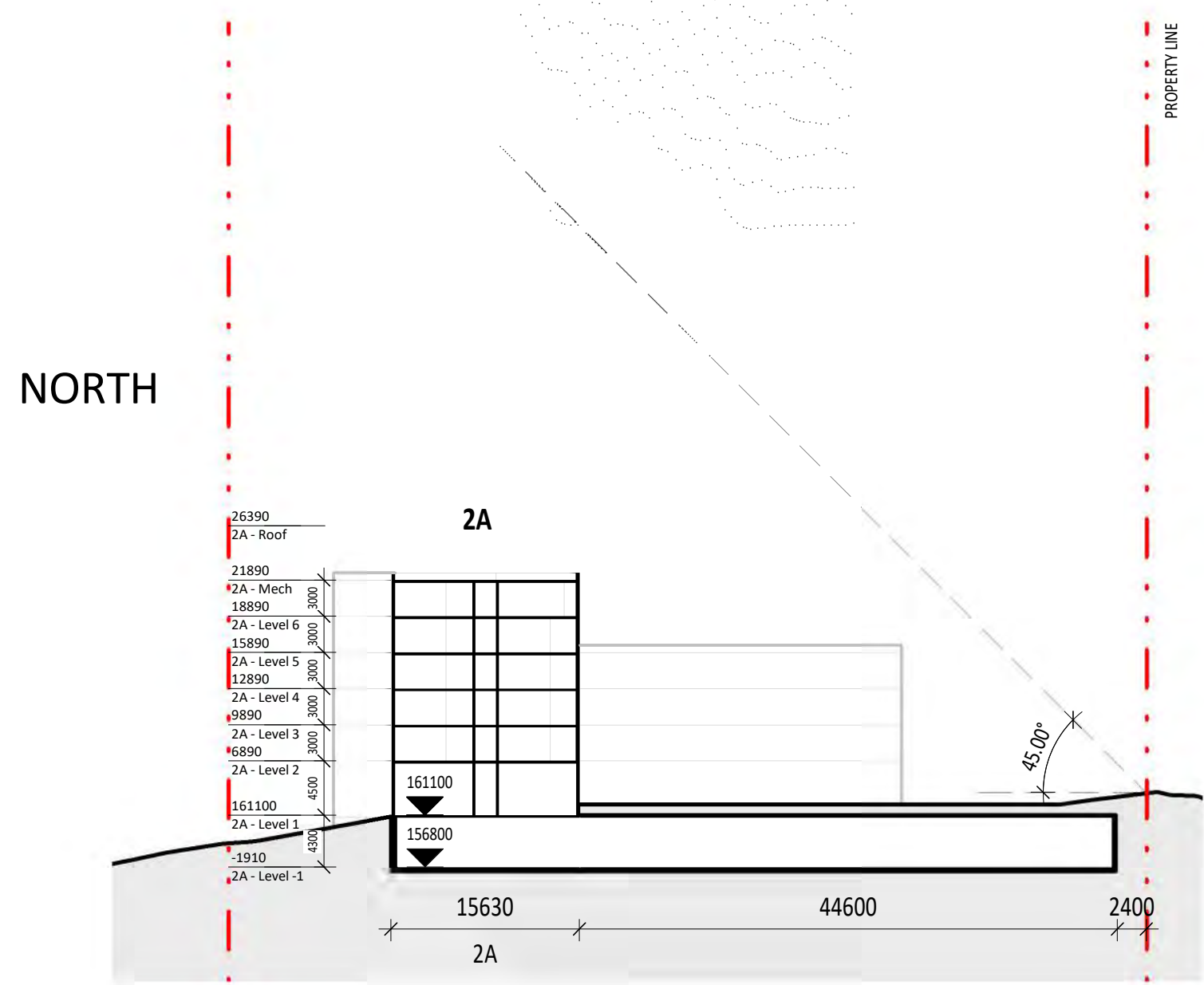
Project No. 2012
 Scale As indicated
 Plot Date 01/13/2023

SITE SECTIONS

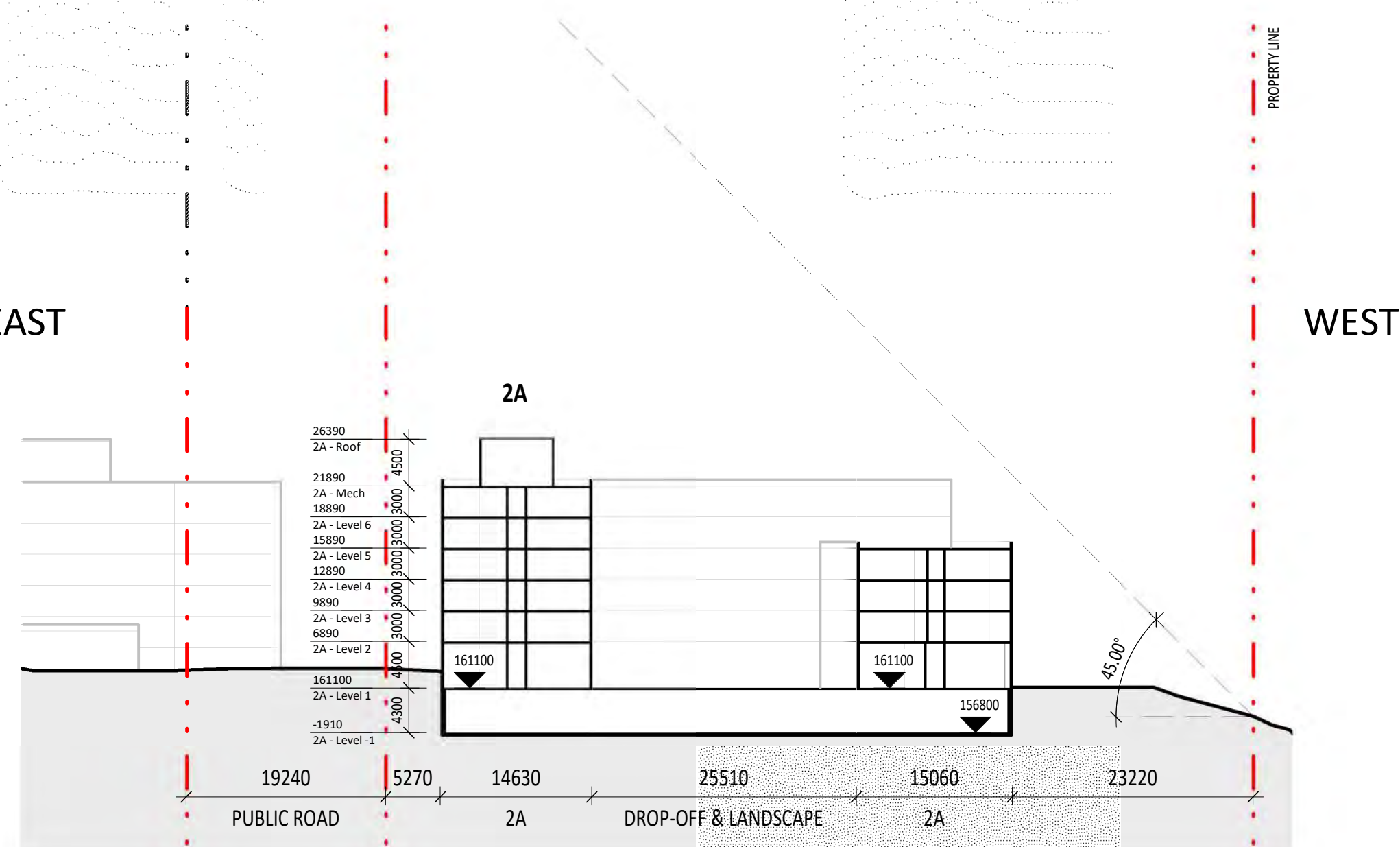
A402



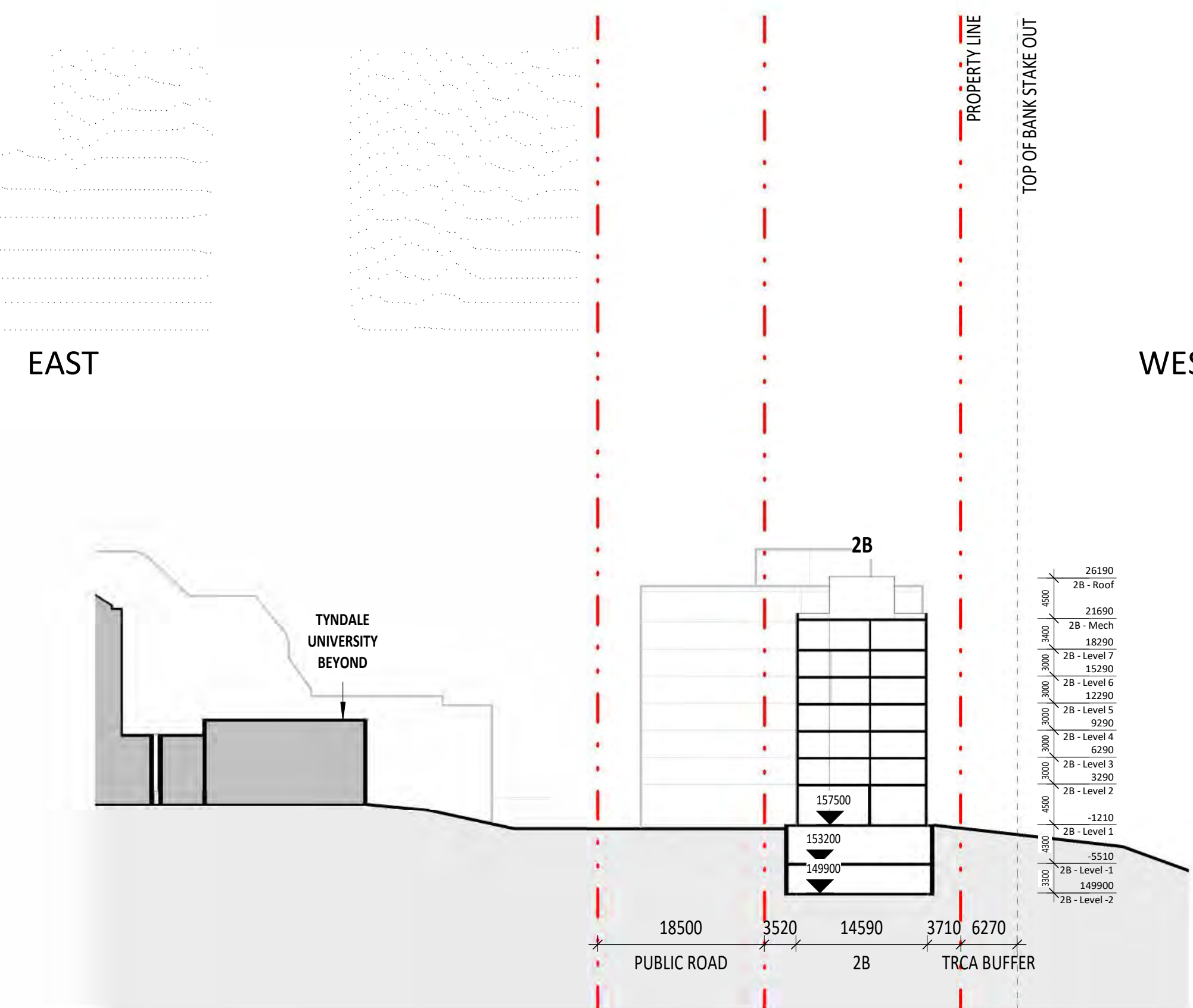
1 SECTION G-G'
1:500



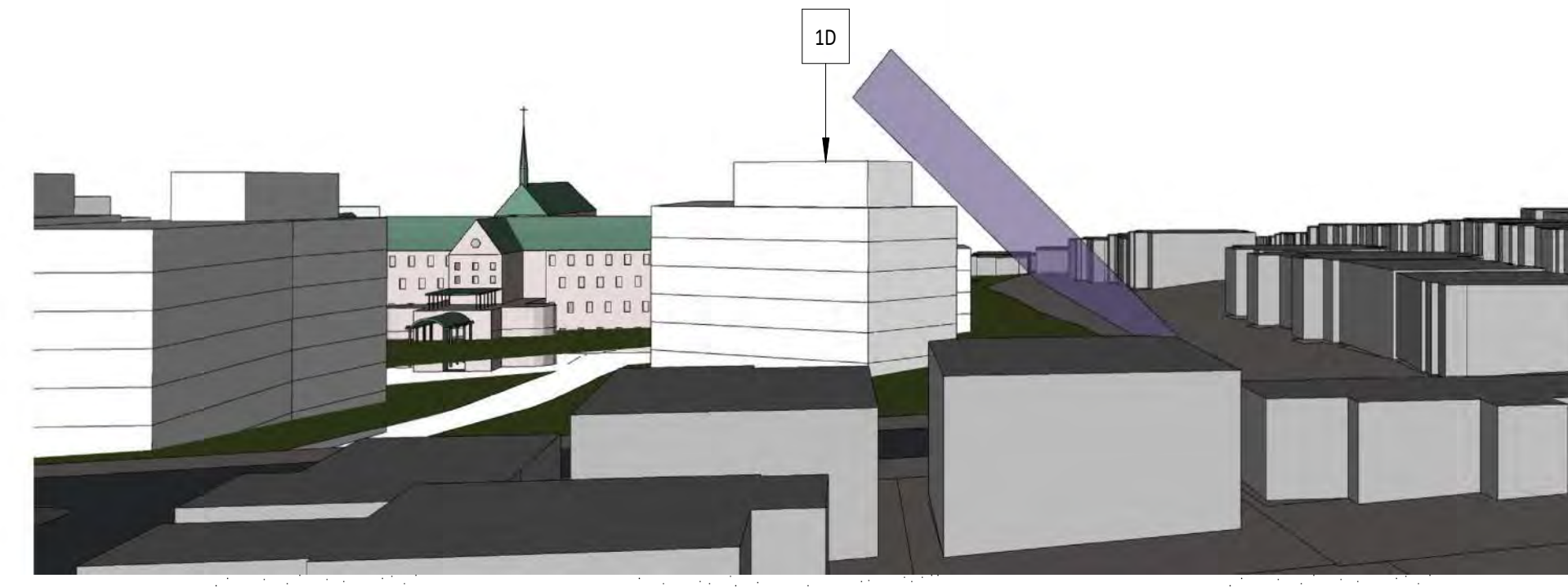
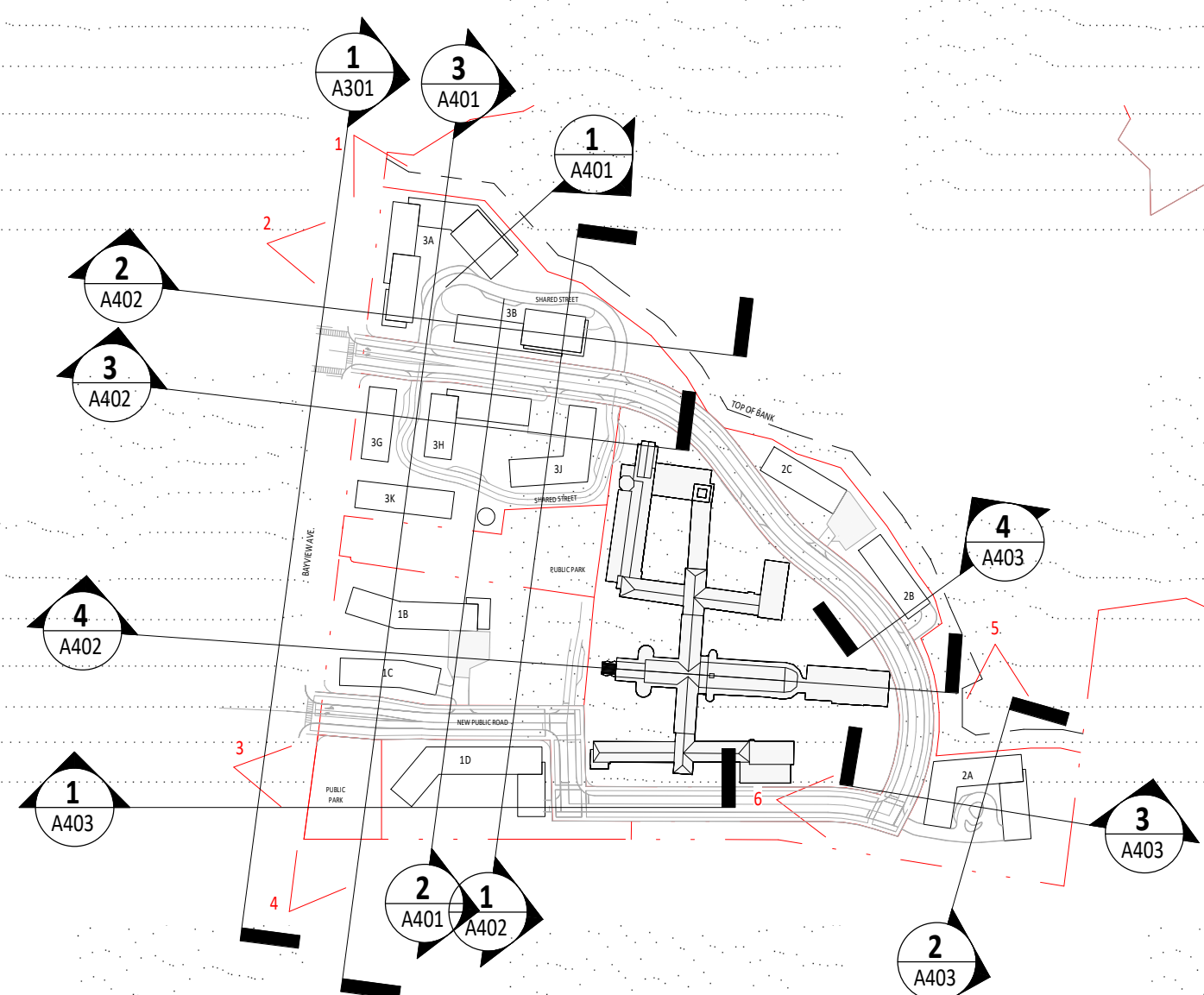
2 SECTION H-H'
1:500



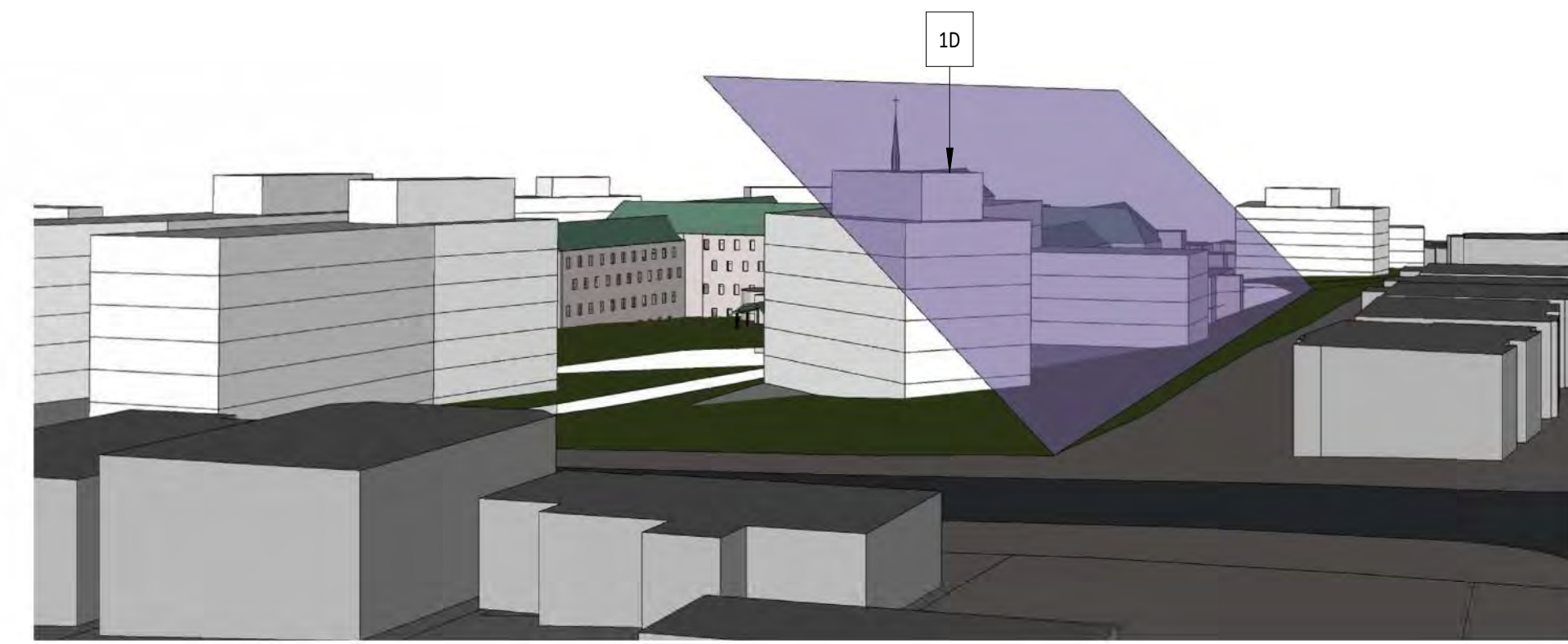
3 SECTION I-I'
1:500



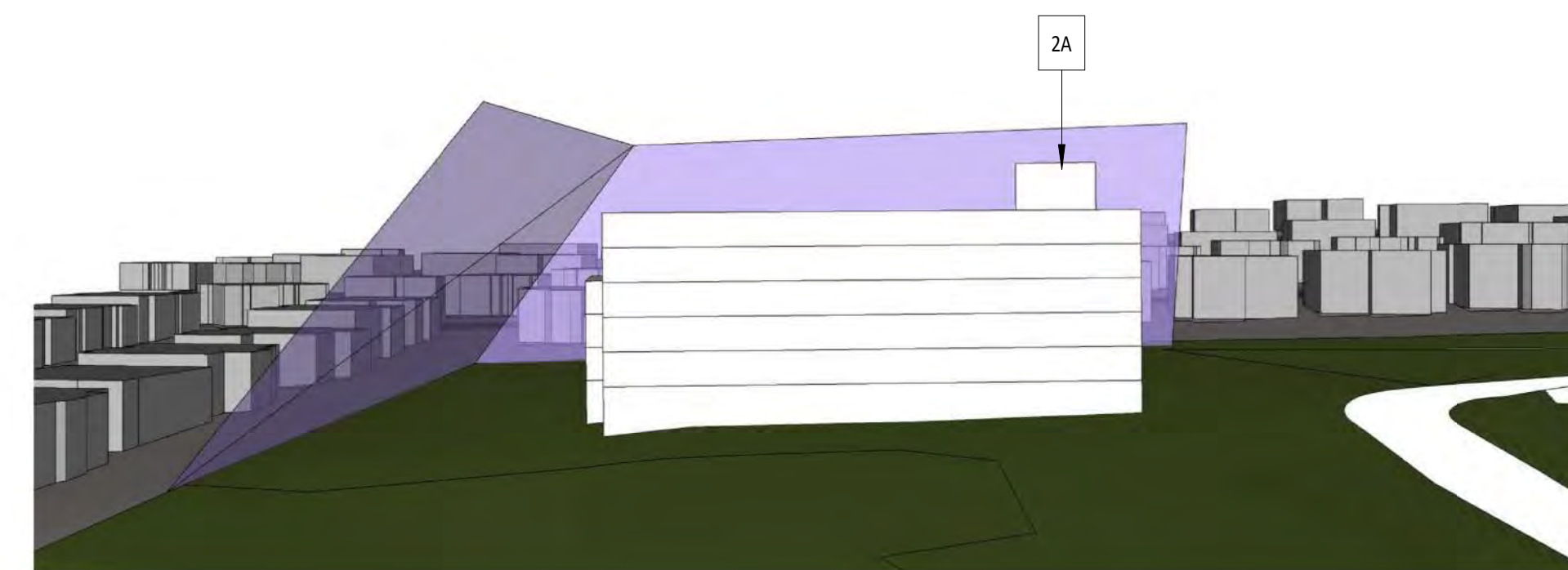
4 SECTION J-J'
1:500



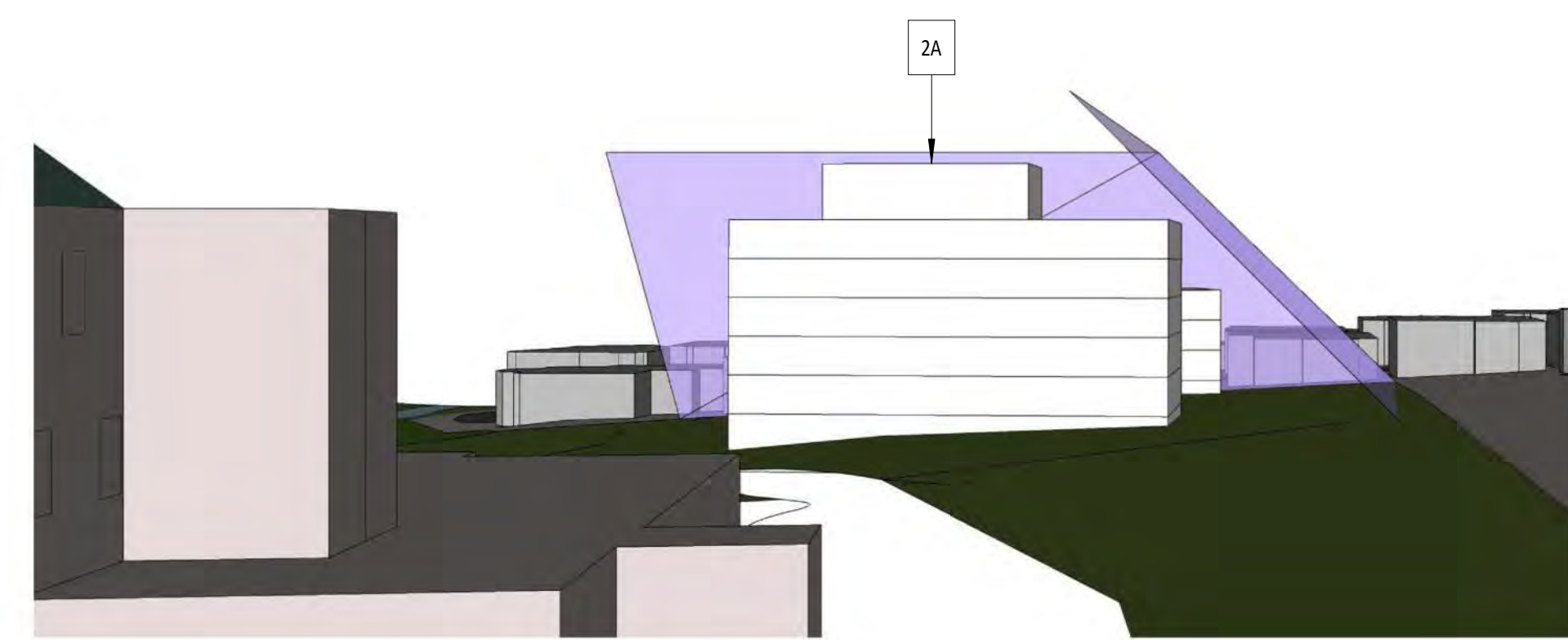
VIEW 3 - ANGULAR PLANE 3D VIEW



VIEW 4 - ANGULAR PLANE 3D VIEW



VIEW 5 - ANGULAR PLANE 3D VIEW



VIEW 6 - ANGULAR PLANE 3D VIEW

Copyright is that of the Architect.
An original of this drawing, reproduced by any means from any media without prior written approval of the Architect is to be used for information only.
The Architect is not liable for any loss or distortion of information resulting from subsequent reproduction of this original drawing.

GENERAL NOTES:

1. Drawings are to be used as a guide. Contractor will verify all existing conditions and dimensions required to perform the Work and will report any discrepancies with the Contract Documents to the Architect before commencing work.
2. The Architect's Drawings are to be used in conjunction with all other Contract Documents including the Project Manual and the Structural, Mechanical and Electrical Drawings. In case of discrepancy between the Contract Documents with respect to the quantity, date or scope of work, the greater shall apply.
3. Positions of support for finished Mechanical or Electrical devices, Wiring and Piping are indicated on the Architectural Drawings. Locations shown on the Architectural Drawings and approved Mechanical and Electrical Drawings, Mechanical and Electrical items not clearly located will be located as directed by the Architect.
4. Dimensions indicated are taken between the faces of finished surfaces unless otherwise noted.
5. The architect has not been retained for supervision of construction and assumes no responsibility for means, methods and techniques of construction.
6. These documents are not to be used for construction unless specifically noted for such purpose.

WITHOUT PREJUDICE

1 JAN 13 2023 OPA / REZONING APP - WITHOUT PREJUDICE

Rev. Date Issued



Project No. 2012
Scale As indicated
Plot Date 01/13/2023

SITE SECTIONS

A403