

**PUBLIC APPENDIX "B"**

**Architectural plans prepared by Turner Fleischer Architects Inc.  
dated February 1, 2023**

20.157CS - 221 STERLING STREET

TORONTO- ONTARIO

PROJECT SITE AREA

SITE AREA	m <sup>2</sup>	ft <sup>2</sup>
TOTAL NET SITE AREA	10,935.2	117,705.9
ROW CONVEYANCE	1,475.7	15,884.3
PUBLIC PARK CONVEYANCE	1,221.3	13,145.9
NET SITE AREA	8,238.2	88,675.2
TOTAL PROPOSED GFA	55,177.5	593,925.6
F.S.I OF PROPOSED DEVELOPMENT	5.05 x SITE AREA	

FSI IS CALCULATED BY DIVIDING THE GROSS FLOOR AREA BY THE GROSS SITE AREA

GROSS FLOOR AREA SUMMARY

BLDG	USE	NSA		GFA		TFA		FSI
		m <sup>2</sup>	ft <sup>2</sup>	m <sup>2</sup>	ft <sup>2</sup>	m <sup>2</sup>	ft <sup>2</sup>	
BLDG A	COMMUNITY SPACE			473.5	5,097			0.00
	SUBTOTAL NON-RESIDENTIAL			473.5	5,097			0.00
	RESIDENTIAL	17,985.3	193,592.3	19,839.4	213,549			1.81
	SUBTOTAL RESIDENTIAL	17,985.3	193,592	19,839.4	213,549	25,373.2	273,115	1.81
	<b>SUB TOTAL</b>	<b>17,985.3</b>	<b>193,592</b>	<b>20,312.9</b>	<b>218,646</b>	<b>25,373.2</b>	<b>273,115</b>	<b>1.86</b>
BLDG B	RESIDENTIAL	15,490.1	166,734.3	18,975.6	204,252			1.73
	SUBTOTAL RESIDENTIAL	15,490.1	166,734	18,975.6	204,252	21,369.4	230,018	1.74
	<b>SUB TOTAL</b>	<b>15,490.1</b>	<b>166,734</b>	<b>18,975.6</b>	<b>204,252</b>	<b>21,369.4</b>	<b>230,018</b>	<b>1.74</b>
BLDG C	RESIDENTIAL	11,509.9	123,891.5	15,889.0	171,028			1.45
	SUBTOTAL RESIDENTIAL	11,509.9	123,892	15,889.0	171,028	22,824.9	245,685	1.45
	<b>SUB TOTAL</b>	<b>11,509.9</b>	<b>123,892</b>	<b>15,889.0</b>	<b>171,028</b>	<b>22,824.9</b>	<b>245,685</b>	<b>1.45</b>
<b>TOTAL</b>	<b>44,985.3</b>	<b>484,218</b>	<b>55,177.5</b>	<b>593,926</b>	<b>69,567.4</b>	<b>748,818</b>	<b>5.05</b>	

SALEABLE UNIT MIX PROVIDED

BLDG	FLOOR	STUDIO	1B	1B+D	2B	3B	TOTAL	AVG. UNIT SIZE						
								m <sup>2</sup>	ft <sup>2</sup>					
BLDG A+B+C	FLOOR 01			2	2		4	65.5	705					
	FLOOR 03	2	3	8	13	11	37	64.7	697					
	FLOOR 04	2	5	9	13	18	47	65.0	699					
	FLOOR 05	1	7	14	4	2	28	50.7	546					
	FLOOR 06	3	12	17	6	3	41	50.3	541					
	FLOOR 07	3	12	17	6	3	41	50.3	541					
	FLOOR 08	3	12	17	6	3	41	50.3	541					
	FLOOR 09	3	12	17	6	3	41	50.3	541					
	FLOOR 10	3	12	17	6	3	41	50.3	541					
	FLOOR 11	3	12	17	6	3	41	50.3	541					
	FLOOR 12	3	12	17	6	3	41	50.3	541					
	FLOOR 13	3	12	17	6	3	41	50.3	541					
	FLOOR 14	3	12	17	6	3	41	50.3	541					
	FLOOR 15	3	12	17	6	3	41	50.3	541					
	FLOOR 16	3	12	17	6	3	41	50.3	541					
	FLOOR 17	3	12	17	6	3	41	50.3	541					
	FLOOR 18	2	11	17	7	3	40	50.9	547					
	FLOOR 19	2	11	17	7	3	40	50.9	548					
	FLOOR 20	2	12	16	5	4	39	50.3	542					
	FLOOR 21	3	13	16	4	3	39	49.0	528					
	FLOOR 22	2	6	11	3	3	25	51.5	555					
	FLOOR 23	2	5	11	3	3	24	50.3	541					
	FLOOR 24	3	9	9	3		24	45.9	494					
	FLOOR 25	1	4	3	1	2	11	52.8	568					
	FLOOR 26	1	3	3	1	2	10	52.9	570					
	FLOOR 27	1	3	4	2		10	47.5	511					
	<b>SUBTOTAL</b>							<b>60</b>	<b>236</b>	<b>344</b>	<b>140</b>	<b>90</b>		
<b>TOTAL UNITS</b>							<b>60</b>	<b>580</b>	<b>140</b>	<b>90</b>	<b>870</b>			
<b>UNIT MIX</b>							<b>6.9%</b>	<b>27.1%</b>	<b>39.5%</b>	<b>16.1%</b>	<b>10.3%</b>	<b>100.0%</b>		
<b>UNIT MIX TOTAL</b>							<b>6.9%</b>	<b>66.7%</b>	<b>16.1%</b>	<b>10.3%</b>	<b>100.0%</b>			
<b>AVG UNIT SIZE</b>							<b>32.0</b>	<b>41.3</b>	<b>51.9</b>	<b>60.9</b>	<b>77.1</b>	<b>m<sup>2</sup></b>		
<b>AVG UNIT SIZE TOTAL</b>							<b>32.0</b>	<b>47.6</b>	<b>60.9</b>	<b>77.1</b>	<b>m<sup>2</sup></b>		<b>51.7</b>	<b>557</b>

GROSS FLOOR AREA BREAKDOWN (BUILDING A) AS PER ZONING BY LAW 569-2013

BLDG A	FLOOR	# OF UNITS	RESIDENTIAL				TOTAL RESIDENTIAL		COMMUNITY SPACE				TOTAL OFFICE		INDOOR AMENITY		TOTAL GFA (TFA - EXCLUSIONS)		OUTDOOR AMENITY		AREA EXCLUSIONS		TOTAL FLOOR AREA		
			SALEABLE		NON-SALEABLE		m <sup>2</sup>	ft <sup>2</sup>	COMMUNITY SPACE		m <sup>2</sup>	ft <sup>2</sup>	m <sup>2</sup>	ft <sup>2</sup>	m <sup>2</sup>	ft <sup>2</sup>	m <sup>2</sup>	ft <sup>2</sup>	m <sup>2</sup>	ft <sup>2</sup>	m <sup>2</sup>	ft <sup>2</sup>	m <sup>2</sup>	ft <sup>2</sup>	
			m <sup>2</sup>	ft <sup>2</sup>	m <sup>2</sup>	ft <sup>2</sup>			COMMUNITY SPACE	COMM. SPACE SERVICE															
	FLOOR UG1																0.0	0			2,166.1	23,316	2,166.1	23,316	
	FLOOR 01	4	262.1	2,821	188.9	2,033	451.0	4,854	473.5	5,097			473.5	5,097	11.6	125	936.1	10,076	108.7	1,170	464.3	4,997	1,400.3	15,073	
	FLOOR 02				1.2	13		13								1,188.8	12,796	1,190.0	12,809	42.7	459	61.4	661	1,251.5	13,471
	FLOOR 03	16	1,042.8	11,224	186.7	2,009	1,229.4	13,234									1,229.4	13,234			61.3	659	1,290.7	13,893	
	FLOOR 04	16	1,042.8	11,224	186.7	2,009	1,229.4	13,234									1,229.4	13,234			61.3	659	1,290.7	13,893	
	FLOOR 05	14	708.3	7,624	56.8	611	765.1	8,235									765.1	8,235			45.3	488	810.4	8,723	
	FLOOR 06	14	708.3	7,624	56.8	611	765.1	8,235									765.1	8,235			45.3	488	810.4	8,723	
	FLOOR 07	14	708.3	7,624	56.8	611	765.1	8,235									765.1	8,235			45.3	488	810.4	8,723	
	FLOOR 08	14	708.3	7,624	56.8	611	765.1	8,235									765.1	8,235			45.3	488	810.4	8,723	
	FLOOR 09	14	708.3	7,624	56.8	611	765.1	8,235									765.1	8,235			45.3	488	810.4	8,723	
	FLOOR 10	14	708.3	7,624	56.8	611	765.1	8,235									765.1	8,235			45.3	488	810.4	8,723	
	FLOOR 11	14	708.3	7,624	56.8	611	765.1	8,235									765.1	8,235			45.3	488	810.4	8,723	
	FLOOR 12	14	708.3	7,624	56.8	611	765.1	8,235									765.1	8,235			45.3	488	810.4	8,723	
	FLOOR 13	14	708.3	7,624	56.8	611	765.1	8,235									765.1	8,235			45.3	488	810.4	8,723	
	FLOOR 14	14	708.3	7,624	56.8	611	765.1	8,235									765.1	8,235			45.3	488	810.4	8,723	
	FLOOR 15	14	708.3	7,624	56.8	611	765.1	8,235									765.1	8,235			45.3	488	810.4	8,723	
	FLOOR 16	14	708.3	7,624	56.8	611	765.1	8,235									765.1	8,235			45.3	488	810.4	8,723	
	FLOOR 17	14	708.3	7,624	56.8	611	765.1	8,235									765.1	8,235			45.3	488	810.4	8,723	
	FLOOR 18	14	708.3	7,624	56.8	611	765.1	8,235									765.1	8,235			45.3	488	810.4	8,723	
	FLOOR 19	14	708.3	7,624	56.8	611	765.1	8,235									765.1	8,235			45.3	488	810.4	8,723	
	FLOOR 20	14	708.3	7,624	56.8	611	765.1	8,235									765.1	8,235			45.3	488	810.4	8,723	
	FLOOR 21	14	708.3	7,624	56.8	611	765.1	8,235									765.1	8,235			45.3	488	810.4	8,723	
	FLOOR 22	14	708.3	7,624	56.8	611	765.1	8,235									765.1	8,235			45.3	488	810.4	8,723	
	FLOOR 23	14	677.3	7,291	56.8	612	734.2	7,903									734.2	7,903			45.3	488	779.5	8,391	
	FLOOR 24	14	626.2	6,741	56.8	612	683.1	7,353									683.1	7,353			45.3	488	728.4	7,841	
	FLOOR 25	11	580.3	6,246	51.7	556	632.0	6,802									632.0	6,802			45.3	488	677.3	7,290	
	FLOOR 26	10	529.2	5,696	51.7	556	580.9	6,253									580.9	6,253			45.3	488	626.2	6,740	
	FLOOR 27	10	475.0	5,113	51.7	556	526.7	5,669									526.7	5,669			48.4	521	575.1	6,190	
	EXCESS INDOOR AMENITY (INCLUDED IN GFA)						506.4	5,451									506.4	5,451							
	<b>TOTAL</b>	<b>347</b>	<b>17,985.013</b>	<b>193,589.156</b>	<b>1,854.133</b>	<b>19,957.731</b>	<b>20,345.563</b>	<b>218,997.917</b>	<b>473.512</b>	<b>5,096.841</b>			<b>473.512</b>	<b>5,096.841</b>	<b>1,200.417</b>	<b>12,921.181</b>	<b>21,513.075</b>	<b>231,564.909</b>	<b>151.4</b>	<b>1,630</b>	<b>3,859.9</b>	<b>41,548</b>	<b>25,373.0</b>	<b>273,113</b>	
	<b>TOTAL (ROUNDED)</b>	<b>347</b>	<b>17,985.0</b>	<b>193,589</b>	<b>1,854.1</b>	<b>19,958</b>	<b>20,345.6</b>	<b>218,998</b>	<b>473.5</b>	<b>5,097</b>			<b>473.5</b>	<b>5,097</b>	<b>1,200.4</b>	<b>12,921</b>	<b>21,513.1</b>	<b>231,565</b>							

AMENITY AREAS REQUIRED & PROVIDED

BLDG A	TYPE	REQUIRED			PROVIDED		
		RATIO	m <sup>2</sup>	ft <sup>2</sup>	RATIO	m <sup>2</sup>	ft <sup>2</sup>
	INDOOR AMENITY	2.00 m <sup>2</sup> /UNIT	694.0	7,470	3.45 m <sup>2</sup> /UNIT	1,200.4	12,921
	OUTDOOR AMENITY	2.00 m <sup>2</sup> /UNIT	694.0	7,470	0.43 m <sup>2</sup> /UNIT	151.4	1,630
	<b>TOTAL AMENITY</b>	<b>4.00 m<sup>2</sup>/UNIT</b>	<b>1,388.0</b>	<b>14,940</b>	<b>3.89 m<sup>2</sup>/UNIT</b>	<b>1,351.8</b>	<b>14,551</b>

TURNER FLEISCHER

Turner Fleischer Architects Inc.

67 Leslie Road  
Toronto, ON, M5B 2T8  
1-416-425-2222  
turnerfleischer.com

This drawing is an instrument of service, it is provided by and is the property of Turner Fleischer Architects Inc. The contractor must verify and accept responsibility for all dimensions and conditions on site and must notify Turner Fleischer Architects Inc. of any variations from the supplied information. This drawing is not to be scaled. The architect is not responsible for the accuracy of survey, structural, mechanical, electrical, etc. information shown on this drawing. Refer to the appropriate consultant drawings before proceeding with the work. Contractor must conform to all applicable codes and requirements of authorities having jurisdiction. The contractor working from drawings not specifically marked 'For Contractor' must assume full responsibility and bear costs for any corrections or damages resulting from his work.

#	DATE	ISSUANCE OF REVISED ZONING DRAWINGS	DESCRIPTION	BY
1	2023-02-01			</

This drawing, as an instrument of service, is provided by and is the property of Turner Fleischer Architects Inc. The contractor must verify and accept responsibility for all dimensions and conditions on site and must notify Turner Fleischer Architects Inc. of any variations from the supplied information. This drawing is not to be scaled. The architect is not responsible for the accuracy of survey, structural, mechanical, electrical, etc. information shown on this drawing. Refer to the appropriate consultant drawings before proceeding with the work. Construction must conform to all applicable codes and requirements of authority having jurisdiction. The contractor working from drawings not specifically marked "For Contractor" must assume full responsibility and bear costs for any corrections or damages resulting from his work.

GROSS FLOOR AREA BREAKDOWN (BUILDING B) AS PER ZONING BY-LAW 569-2013

FLOOR	# OF UNITS	RESIDENTIAL								INDOOR AMENITY		TOTAL GFA (TFA - EXCLUSIONS)		OUTDOOR AMENITY		AREA EXCLUSIONS		TOTAL FLOOR AREA			
		RENTAL REPLACEMENT		NON-RENTABLE		SALEABLE		NON-SALEABLE		m²	ft²	m²	ft²	m²	ft²	m²	ft²	TOTAL FLOOR AREA			
		m²	ft²	m²	ft²	m²	ft²	m²	ft²									m²	ft²		
FLOOR UG1																					
FLOOR 01	4	340.7	3,667					48.2	519	429.8	4,626	48.2	519	384.4	4,138	399.5	4,300	48.2	519		
FLOOR 02	15	1,090.1	11,734					330.0	3,552			1,100.4	11,845			1,499.9	16,145				
FLOOR 03	19					1,225.4	13,190	216.0	2,325			1,441.4	15,515			76.4	822	1,232.5	13,266		
FLOOR 04	19					1,208.4	13,007	275.4	2,964			1,483.8	15,972			45.3	488	1,486.7	16,003		
FLOOR 05	5					252.3	2,716	55.6	599	489.4	5,268	797.3	8,582	830.5	8,940	45.3	488	842.6	9,070		
FLOOR 06	14					708.3	7,624	56.8	611			765.1	8,235			45.3	488	810.4	8,723		
FLOOR 07	14					708.3	7,624	56.8	611			765.1	8,235			45.3	488	810.4	8,723		
FLOOR 08	14					708.3	7,624	56.8	611			765.1	8,235			45.3	488	810.4	8,723		
FLOOR 09	14					708.3	7,624	56.8	611			765.1	8,235			45.3	488	810.4	8,723		
FLOOR 10	14					708.3	7,624	56.8	611			765.1	8,235			45.3	488	810.4	8,723		
FLOOR 11	14					708.3	7,624	56.8	611			765.1	8,235			45.3	488	810.4	8,723		
FLOOR 12	14					708.3	7,624	56.8	611			765.1	8,235			45.3	488	810.4	8,723		
FLOOR 13	14					708.3	7,624	56.8	611			765.1	8,235			45.3	488	810.4	8,723		
FLOOR 14	14					708.3	7,624	56.8	611			765.1	8,235			45.3	488	810.4	8,723		
FLOOR 15	14					708.3	7,624	56.8	611			765.1	8,235			45.3	488	810.4	8,723		
FLOOR 16	14					708.3	7,624	56.8	611			765.1	8,235			45.3	488	810.4	8,723		
FLOOR 17	14					708.3	7,624	56.8	611			765.1	8,235			45.3	488	810.4	8,723		
FLOOR 18	14					707.8	7,619	56.8	611			764.6	8,230			45.3	488	809.9	8,718		
FLOOR 19	14					708.3	7,624	56.8	611			765.1	8,235			45.3	488	810.4	8,723		
FLOOR 20	14					677.3	7,291	56.8	612			734.2	7,903			45.3	488	779.5	8,391		
FLOOR 21	11					626.2	6,741	56.8	612			683.1	7,353			45.3	488	728.4	7,841		
FLOOR 22	14					580.3	6,246	51.7	556			632.0	6,803			45.3	488	677.3	7,291		
FLOOR 23	10					529.2	5,696	51.7	556			580.9	6,253			45.3	488	626.2	6,740		
FLOOR 24	10					475.0	5,113	51.7	556			526.7	5,669			48.4	521	575.1	6,190		
EXCESS INDOOR AMENITY (INCLUDED IN GFA)												285.2	3,069								
TOTAL	317	1,430,767	15,400,658			15,489,846	166,731,387	2,054,795	22,117,643	919,161	9,893,768	19,894,570	214,143,457			1,214.9	13,077	1,474.6	15,872	21,369.2	230,016
TOTAL (ROUNDED)	317	1,430.8	15,401			15,489.8	166,731	2,054.8	22,118	919.2	9,894	19,894.6	214,143								

SALEABLE UNIT MIX PROVIDED

BLDG	FLOOR	STUDIO	RESIDENTIAL				TOTAL	AVG. UNIT SIZE	
			1B	1B+D	2B	3B		m²	ft²
	FLOOR 03		1	6	8	4	19	64.5	694
	FLOOR 04		2	3	9	5	19	63.6	685
	FLOOR 05		1	3	1		5	50.5	543
	FLOOR 06	1	4	6	2	1	14	50.6	545
	FLOOR 07	1	4	6	2	1	14	50.6	545
	FLOOR 08	1	4	6	2	1	14	50.6	545
	FLOOR 09	1	4	6	2	1	14	50.6	545
	FLOOR 10	1	4	6	2	1	14	50.6	545
	FLOOR 11	1	4	6	2	1	14	50.6	545
	FLOOR 12	1	4	6	2	1	14	50.6	545
	FLOOR 13	1	4	6	2	1	14	50.6	545
	FLOOR 14	1	4	6	2	1	14	50.6	545
	FLOOR 15	1	4	6	2	1	14	50.6	545
	FLOOR 16	1	4	6	2	1	14	50.6	545
	FLOOR 17	1	4	6	2	1	14	50.6	545
	FLOOR 18	1	4	6	2	1	14	50.6	544
	FLOOR 19	1	4	6	2	1	14	50.6	545
	FLOOR 20	1	5	5	2	1	14	48.4	521
	FLOOR 21	2	6	5	1		14	44.7	481
	FLOOR 22	1	2	5	1	2	11	52.8	568
	FLOOR 23	1	1	5	1	2	10	52.9	570
	FLOOR 24	1	3	4	2		10	47.5	511
	SUBTOTAL	20	77	120	53	28	298		
	TOTAL UNITS	20	197	53	28	298		52.0	560
	UNIT MIX	6.7%	25.8%	40.3%	17.8%	9.4%	100.0%		
	UNIT MIX TOTAL	6.7%	66.1%	17.8%	9.4%	100.0%			
	AVG UNIT SIZE	32.4	41.1	52.3	61.3	76.6	m²		
	AVG UNIT SIZE TOTAL	32.4	48.0	61.3	76.6	m²			

SALEABLE UNIT MIX PROVIDED




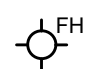
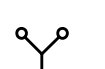


BLDG	FLOOR	STUDIO	RESIDENTIAL				TOTAL	AVG. UNIT SIZE	
			1B	1B+D	2B	3B		m²	ft²
	FLOOR 03				2		2	63.1	679
	FLOOR 04		1	4	1	6	12	66.9	720
	FLOOR 05		2	5	1	1	9	51.0	549
	FLOOR 06	1	4	5	2	1	13	49.6	533
	FLOOR 07	1	4	5	2	1	13	49.6	533
	FLOOR 08	1	4	5	2	1	13	49.6	533
	FLOOR 09	1	4	5	2	1	13	49.6	533
	FLOOR 10	1	4	5	2	1	13	49.6	533
	FLOOR 11	1	4	5	2	1	13	49.6	533
	FLOOR 12	1	4	5	2	1	13	49.6	533
	FLOOR 13	1	4	5	2	1	13	49.6	533
	FLOOR 14	1	4	5	2	1	13	49.6	533
	FLOOR 15	1	4	5	2	1	13	49.6	533
	FLOOR 16	1	4	5	2	1	13	49.6	533
	FLOOR 17	1	4	5	2	1	13	49.6	533
	FLOOR 18		3	5	3	1	12	51.5	554
	FLOOR 19		3	5	3	1	12	51.5	554
	FLOOR 20		3	5	1	2	11	52.5	565
	FLOOR 21		3	5	1	2	11	52.5	565
	SUBTOTAL	12	63	89	36	25	225		
	TOTAL UNITS	12	152	36	25	225		51.2	551
	UNIT MIX	5.3%	28.0%	39.6%	16.0%	11.1%	100.0%		
	UNIT MIX TOTAL	5.3%	67.6%	16.0%	11.1%	100.0%			
	AVG UNIT SIZE	30.1	40.9	50.4	60.7	76.0	m²		
	AVG UNIT SIZE TOTAL	30.1	46.5	60.7	76.0	m²			

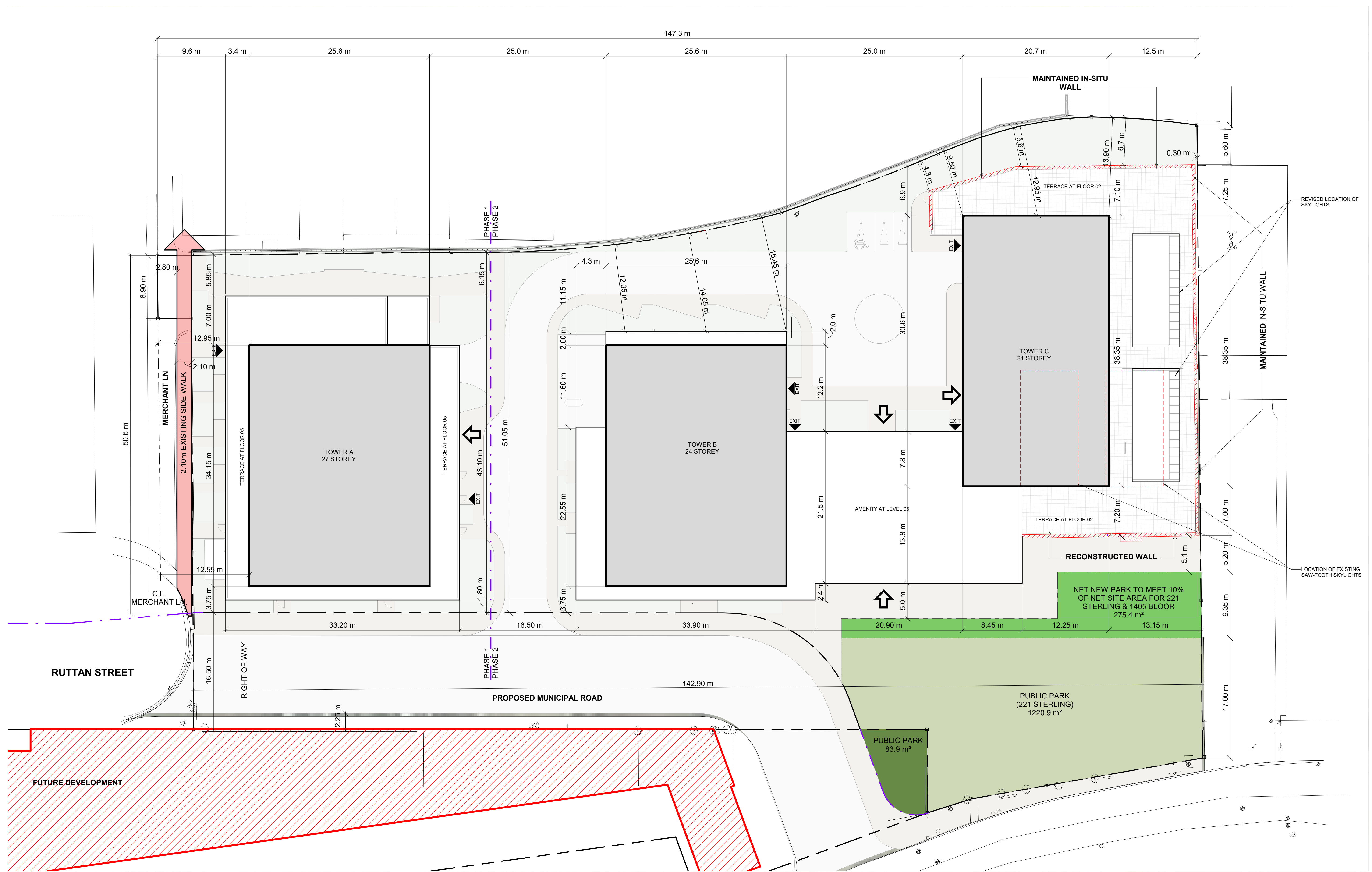
GROSS FLOOR AREA BREAKDOWN (BUILDING C) AS PER ZONING BY-LAW 569-2013

FLOOR	# OF UNITS	RESIDENTIAL								INDOOR AMENITY		TOTAL GFA (TFA - EXCLUSIONS)		OUTDOOR AMENITY		AREA EXCLUSIONS		TOTAL FLOOR AREA	
		RENTAL REPLACEMENT		NON-RENTABLE		SALEABLE		NON-SALEABLE		m²	ft²	m²	ft²	m²	ft²	m²	ft²	TOTAL FLOOR AREA	
		m²	ft²	m²	ft²	m²	ft²	m²	ft²									m²	ft²
FLOOR UG1																			
FLOOR 01	16	1,454.7	15,658					22.8	245			22.8	245	5,491.9	59,114	5,514.7	59,359		
FLOOR 02	13	931.0	10,021					236.5	2,545			1,691.2	18,204	245.2	2,639	1,936.4	20,843		
FLOOR 03	12	679.5	7,314					193.9	2,087			1,124.9	12,108	49.5	533	1,174.4	12,641		
FLOOR 04	12					126.2	1,359	65.7	707			871.4	9,379	49.8	536	921.1	9,915		
FLOOR 05	9					802.4	8,637	27.8	299			830.2	8,936	49.8	536	879.9	9,471		
FLOOR 06	13					459.0	4,940	41.0	441	203.7	2,193	703.7	7,575	49.8	536	753.4	8,110		
FLOOR 07	13					644.2	6,935	46.0	495			690.2	7,429	49.8	536	739.9	7,965		
FLOOR 08	13					644.2	6,935	46.0	495			690.2	7,429	49.8	536	739.9	7,965		
FLOOR 09	13					644.2	6,935	46.0	495			690.2	7,429	49.8	536	739.9	7,965		
FLOOR 10	13					644.2	6,935	46.0	495			690.2	7,429	49.8	536	739.9	7,965		
FLOOR 11	13					644.2	6,935	46.0	495			690.2</							

This drawing is an instrument of service, it is provided by and is the property of Turner Fleischer Architects Inc. The contractor must verify and accept responsibility for all dimensions and conditions on site and must notify Turner Fleischer Architects Inc. of any variations from the supplied information. This drawing is not to be scaled. The architect is not responsible for the accuracy of survey, structural, mechanical, electrical, etc. information shown on this drawing. Refer to the appropriate consultant drawings before proceeding with the work. Contractor must conform to all applicable codes and requirements of all applicable having jurisdiction. The contractor working from drawings not specifically marked for Contractor must assume full responsibility and bear costs for any corrections or damages resulting from his work.

### LEGEND

-  PRIMARY RESIDENTIAL ENTRANCE
-  SECONDARY RESIDENTIAL ENTRANCE
-  RETAIL ENTRANCE
-  EXIT
-  FIRE HYDRANT
-  SIAMESE CONNECTION
-  CONVEX MIRROR
-  TRANSFORMER WITH CLEARANCES
-  FIRE ROUTE SIGN
-  SPOT ELEVATION
-  GAS/HYDRO METER



**1 SITE PLAN**  
1 : 250

#	DATE	ISSUANCE OF REVISED ZONING DRAWINGS DESCRIPTION	BY
1	2023-02-01	ISSUANCE OF REVISED ZONING DRAWINGS	

221 Sterling Road Holdings Inc.

PROJECT  
**221 STERLING ROAD**  
TORONTO ONTARIO

DRAWING  
**SITE PLAN**

PROJECT NO.  
20-157CS  
PROJECT DATE  
2022-11-17  
DRAWN BY  
SKL  
CHECKED BY  
Checker  
SCALE  
As indicated

DRAWING NO.  
**RZ120**

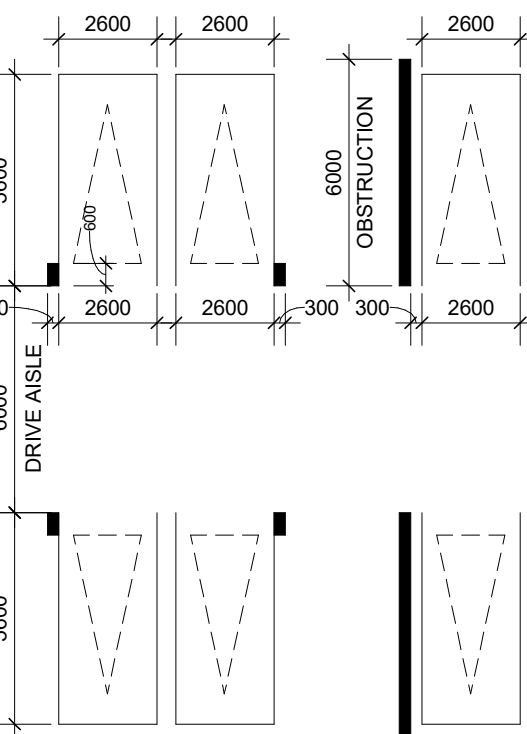
This drawing is an instrument of service, it is provided by and is the property of Turner Fleischer Architects Inc. The contractor must verify and accept responsibility for all dimensions and conditions on site and must notify Turner Fleischer Architects Inc. of any variations from the approved information. This drawing is not to be scaled. The architect is not responsible for the accuracy of survey, structural, mechanical, electrical, etc. information shown on this drawing. Refer to the appropriate consultant drawings before proceeding with the work. Construction must conform to all applicable codes and requirements of applicable building jurisdiction. The contractor working from drawings not specifically marked 'For Construction' must assume full responsibility and bear costs for any corrections or damages resulting from his work.

### SYMBOL LEGEND:

- CONVEX MIRROR
- PARKING SPACE WITH ACCESS TO EVSE

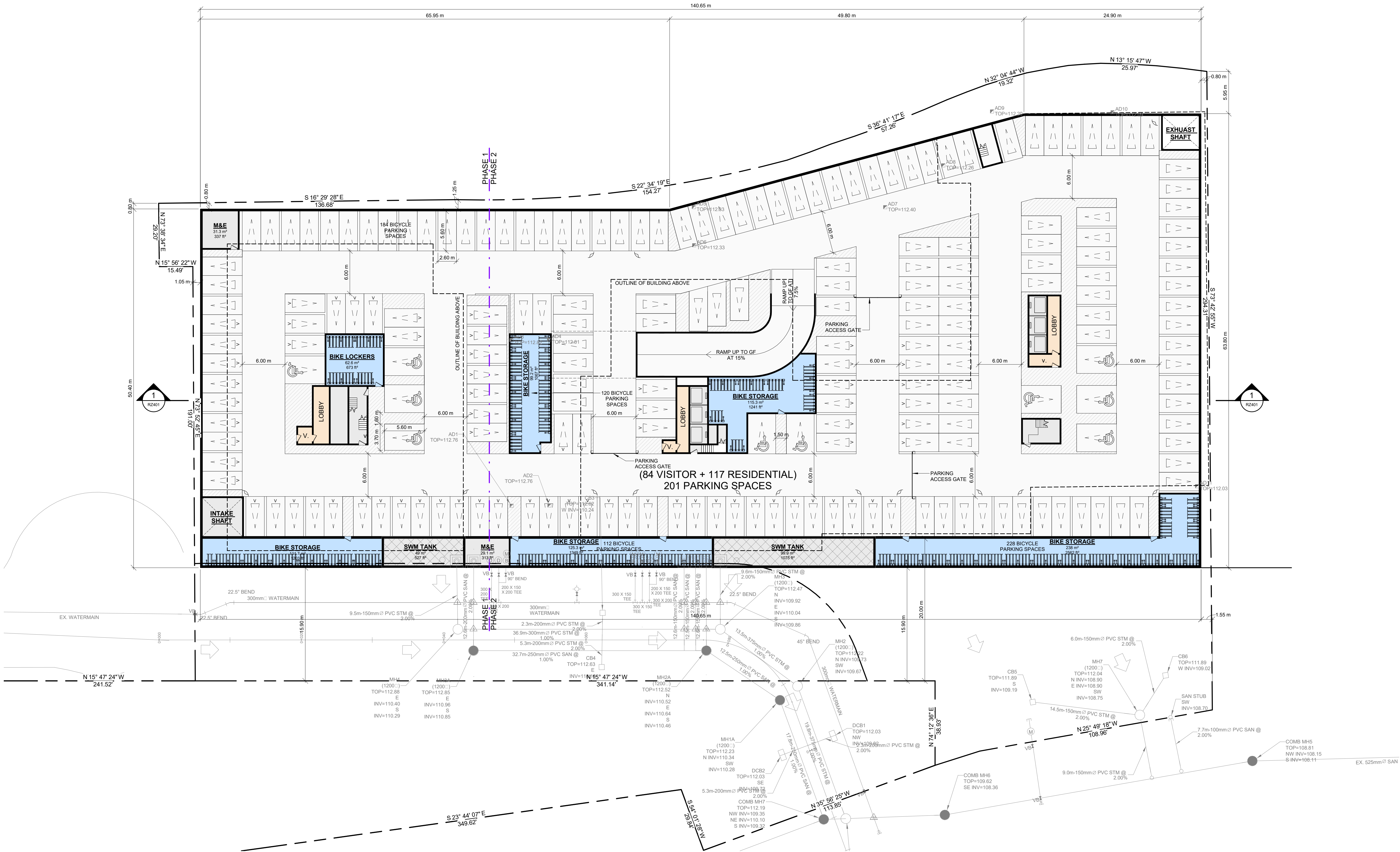
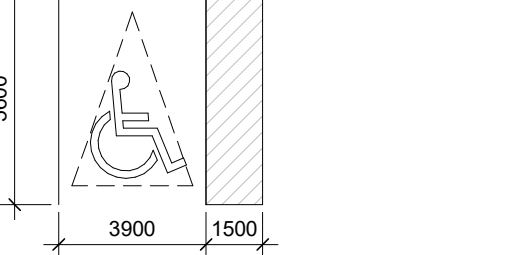
### TYPICAL PARKING DIMENSIONS:

aisle width: MIN 6m  
TYPICAL PARKING SPACE:  
MIN 2.6 x 5.6 x 2.0m HIGH



### TYPICAL BARRIER FREE SPACE:

MIN 3.9 x 5.6 x 2.1m HIGH



#	DATE	ISSUANCE OF REVISED ZONING DRAWINGS	DESCRIPTION	BY
1	2023-02-01	ISSUANCE OF REVISED ZONING DRAWINGS		

### 221 Sterling Road Holdings Inc.

### PROJECT 221 STERLING ROAD

TORONTO ONTARIO

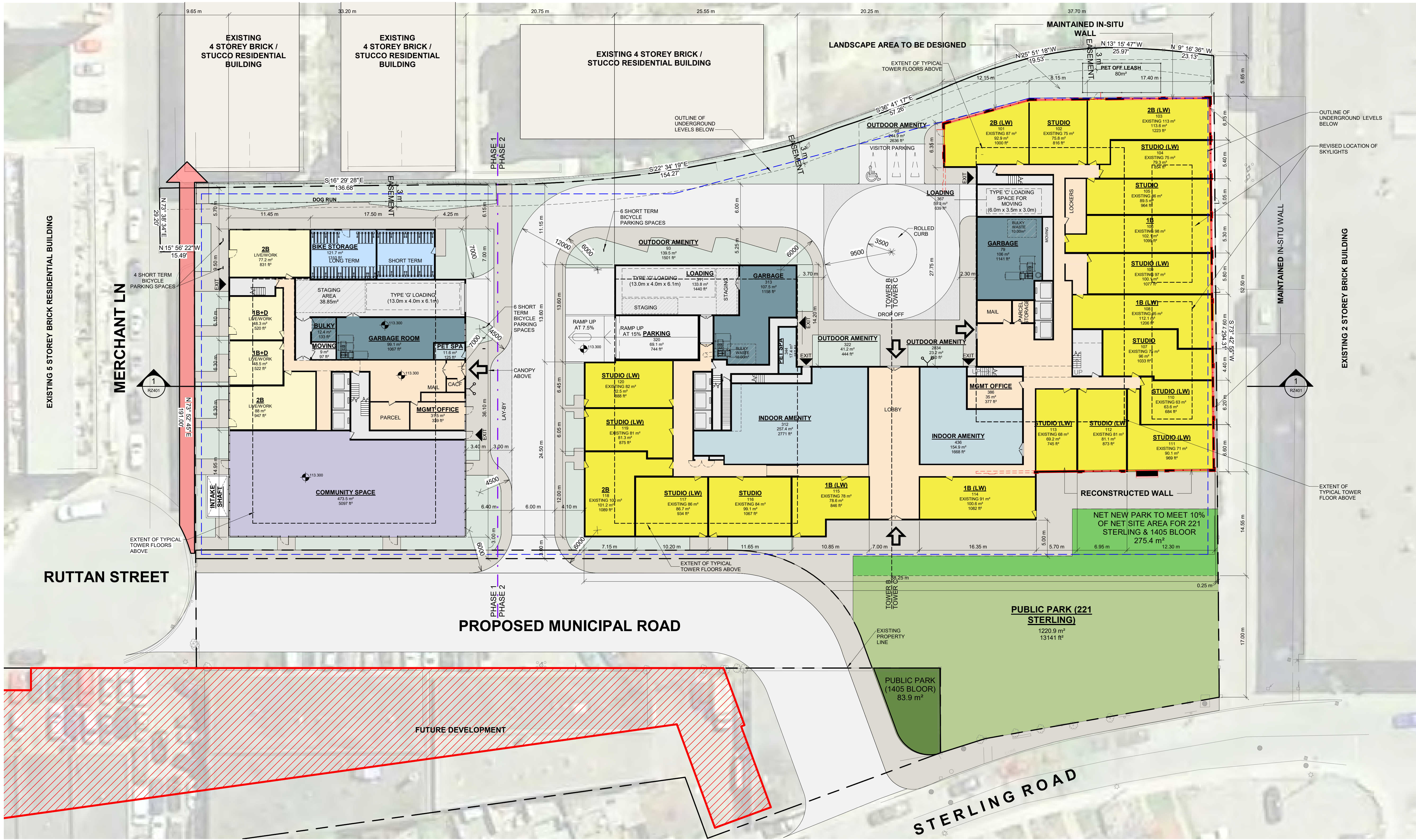
### DRAWING FLOOR UG1

PROJECT NO.	20.157CS
PROJECT DATE	2022-11-17
DRAWN BY	SKL
CHECKED BY	Checker
SCALE	As indicated



1 FLOOR UG1  
1 : 250

This drawing is an instrument of service, it is provided by and is the property of Turner Fleischer Architects Inc. The contractor must verify and accept responsibility for all dimensions and conditions on site and must notify Turner Fleischer Architects Inc. of any variations from the supplied information. This drawing is not to be scaled. The architect is not responsible for the accuracy of survey, structural, mechanical, electrical, etc. information shown on this drawing. Refer to the appropriate consultant drawings before proceeding with the work. Construction must conform to all applicable codes and requirements of applicable governing jurisdiction. The contractor working from drawings not specifically marked "for Contractor" must assume full responsibility and bear costs for any corrections or damages resulting from his work.



### LEGEND

- PRIMARY RESIDENTIAL ENTRANCE
- SECONDARY RESIDENTIAL ENTRANCE
- RETAIL ENTRANCE
- EXIT
- FIRE HYDRANT
- SIAMESE CONNECTION
- CONVEX MIRROR
- TRANSFORMER WITH CLEARANCES
- FIRE ROUTE SIGN
- SPOT ELEVATION
- GAS/HYDRO METER

#	DATE	ISSUANCE OF REVISED ZONING DRAWINGS	DESCRIPTION	BY
1	2023-02-01	ISSUANCE OF REVISED ZONING DRAWINGS		

221 Sterling Road Holdings Inc.

PROJECT  
**221 STERLING ROAD**  
TORONTO ONTARIO

DRAWING  
**GROUND FLOOR PLAN**

PROJECT NO. 20.157CS
PROJECT DATE 2022-11-17
DRAWN BY SKL
CHECKED BY Checker
SCALE As indicated

DRAWING NO. **RZ151**













#	DATE	ISSUANCE OF REVISED ZONING DRAWINGS	DESCRIPTION	BY
1	2023-02-01			

221 Sterling Road Holdings Inc.

PROJECT  
**221 STERLING ROAD**

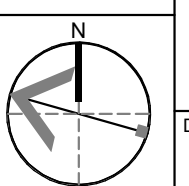
TORONTO ONTARIO

DRAWING  
**TYPICAL TOWER PLANS (5-23 BLD A, 6-20 BLD B, 6-17 BLD C)**

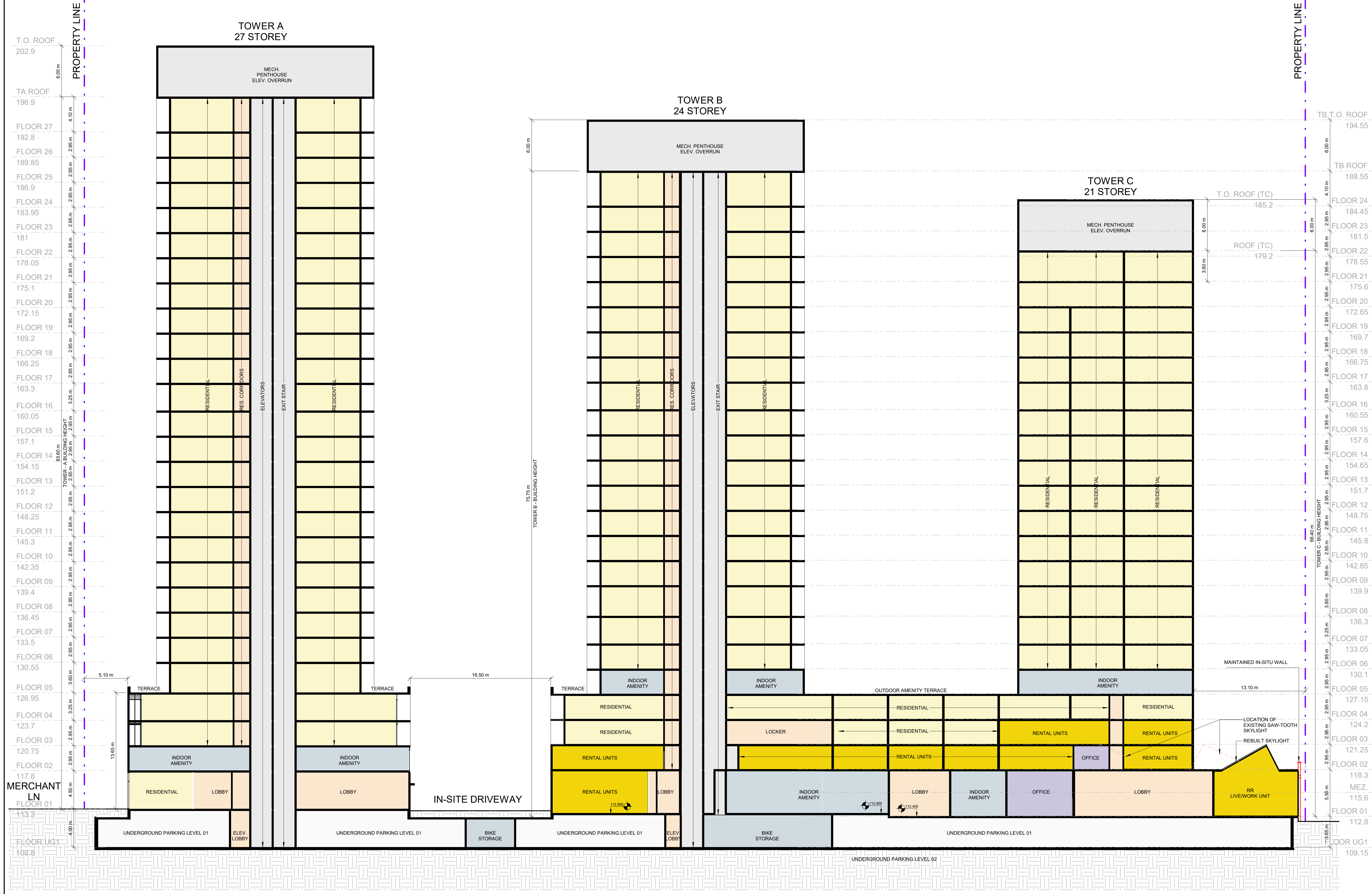
PROJECT NO.  
20.157CS  
PROJECT DATE  
2022-11-17  
DRAWN BY  
SKL  
CHECKED BY  
Checker

SCALE  
1 : 250

DRAWING NO.  
**RZ156**



This drawing, as an instrument of service, is provided by and is the property of Turner Fleischer Architects Inc. The contractor must verify and accept responsibility for all dimensions and conditions on site and must notify Turner Fleischer Architects Inc. of any variations from the supplied information. This drawing is not to be scaled. The architect is not responsible for the accuracy of survey, structural, mechanical, electrical, etc. information shown on this drawing. Refer to the appropriate consultants' drawings before proceeding with the work. Contractor must conform to all applicable codes and requirements of authorities having jurisdiction. The contractor working from drawings not specifically marked "for Contractor" must assume full responsibility and bear costs for any corrections or damages resulting from his work.



#	DATE	ISSUANCE OF REVISED ZONING DRAWINGS	DESCRIPTION	BY
1	2023-02-01			

**221 Sterling Road Holdings Inc.**

**PROJECT 221 STERLING ROAD**

TORONTO ONTARIO

**BUILDING SECTION**

PROJECT NO.	20.157CS
PROJECT DATE	2022-11-17
DRAWN BY	SKL
CHECKED BY	Checker
SCALE	1:200

DRAWING NO. **RZ401**