

THIS DRAWING, AS AN INSTRUMENT OF SERVICE, IS PROVIDED BY AND IS THE PROPERTY OF GRAZIANI + CORAZZA ARCHITECTS INC. THE CONTRACTOR MUST VERIFY AND ACCEPT RESPONSIBILITY FOR ALL DIMENSIONS AND CONDITIONS ON SITE AND MUST NOTIFY GRAZIANI + CORAZZA ARCHITECTS INC. OF ANY VARIATIONS FROM THE SUPPLIED INFORMATION. GRAZIANI + CORAZZA ARCHITECTS INC. IS NOT RESPONSIBLE FOR THE ACCURACY OF SURVEY, STRUCTURAL, MECHANICAL, ELECTRICAL, ETC., ENGINEERING INFORMATION SHOWN ON THIS DRAWING. REFER TO THE APPROPRIATE ENGINEERING DRAWINGS BEFORE PROCEEDING WITH THE WORK. CONTRACTORS MUST CONFORM TO ALL APPLICABLE CODES AND REQUIREMENTS OF THE AUTHORITIES HAVING JURISDICTION, UNLESS OTHERWISE NOTED. NO INVESTIGATION HAS BEEN UNDERTAKEN OR REPORTED ON BY THIS OFFICE IN REGARDS TO THE ENVIRONMENTAL CONDITIONS OF THE SITE.

THIS DRAWING IS NOT TO BE SCALED. ALL ARCHITECTURAL SYMBOLS INDICATED ON THIS DRAWING ARE GRAPHIC REPRESENTATIONS ONLY. THIS DRAWING IS NOT TO BE USED FOR CONSTRUCTION PURPOSES UNLESS COUNTERSIGNED BY THE ARCHITECT.

CONDITIONS FOR ELECTRONIC INFORMATION TRANSFER:  
ELECTRONIC INFORMATION IS SUPPLIED TO THE OTHER ASSOCIATED FIRMS TO ASSIST THEM IN THE EXECUTION OF THEIR WORK/REVIEW. THE RECIPIENT FIRMS MUST DETERMINE THE COMPLETENESS/APPROPRIATENESS/RELEVANCE OF THE INFORMATION IN RESPECT TO THEIR PARTICULAR RESPONSIBILITY.

ISSUES

No.	Date	Description	Issued by
01	NOV 03 2021	ISSUED FOR SPA SUBMISSION	E.C.
02	APR 20 2023	ISSUED FOR OLI SUBMISSION	E.C.

GRAZIANI + CORAZZA ARCHITECTS INC. SHALL NOT BE RESPONSIBLE FOR:  
1. ERRORS, OMISSIONS, INCOMPLETENESS DUE TO LOSS OF INFORMATION IN WHOLE OR PART WHEN INFORMATION IS TRANSFERRED.  
2. TRANSMISSION OF ANY VIRUS OR DAMAGE TO THE RECEIVING ELECTRONIC SYSTEM WHEN INFORMATION IS TRANSFERRED.

MATERIAL LEGEND	
	VISION GLASS GLASS: CLEAR FRAME: GREY/CHARCOAL
	VISION GLASS - BIRD FRIENDLY GLASS: CLEAR FRAME: GREY/CHARCOAL NOTE: ALLOW FOR BIRD FRET PATTERN NO MORE THAN 100mm x 100mm AT 18m HEIGHT FROM GROUND FLOOR AND 4m HEIGHT FROM VARIOUS GREEN ROOF CONDITIONS
	GLASS RAILING GLASS: CLEAR FRAME: GREY
	GLASS RAILING GLASS: CLEAR FRAME: GREY NOTE: ALLOW FOR BIRD FRET PATTERN NO MORE THAN 100mm x 100mm AT 18m HEIGHT FROM GROUND FLOOR AND 4m HEIGHT FROM VARIOUS GREEN ROOF CONDITIONS
	GLASS RAILING/SCREEN - FROSTED GLASS: FROSTED WHITE FRAME: GREY
	MULLION/FRAME - WHITE WHITE
	MULLION/FRAME - GREY GREY
	MULLION/FRAME - CHARCOAL CHARCOAL
	GLAZED SPANDREL PANEL - GREY GLASS: GREY
	PREFINISHED METAL LOUVER/GRILLE GREY
	PREFINISHED METAL LOUVER/GRILLE CHARCOAL
	METAL PANEL - WHITE WHITE
	METAL PANEL - GREY GREY
	PRECAST PANEL - LIGHT WHITE
	PRECAST PANEL - DARK CHARCOAL

NOTE: IF EXACT SPECIFIED COLOUR IS NOT AVAILABLE, ATTEMPT COLOUR MATCH AND SUBMIT ALTERNATIVE SAMPLES FOR ARCHITECTS APPROVAL.

No.	Date	Description	Issued by
Issued for revisions			

PROPOSED MIXED-USE DEVELOPMENT  
2010-2050 YONGE STREET



TORONTO

Project Architect : E. CORAZZA  
Assistant Designer : L. WONG/J.O.H.  
Drawn By : J.O.H.  
Checked By : D. BIASE  
Plot Date : APR. 20 2023  
Job # : 1736.19

EAST - YONGE STREET

1:50 A405



WEST PROPERTY LINE

EAST PROPERTY LINE

6TH

400 ROAD WIDENING

5TH

GL-S

MP-W

ML-G

GL-V

MF-G

GR

MP-W

4TH

ML-C

MF-C

GL-VB

GR-B

PC-D

GL-S

3RD

ML-C

GL-VB

MF-C

PC-D

GL-S

PC-D

ML-C

GL-VB

PC-D

2ND

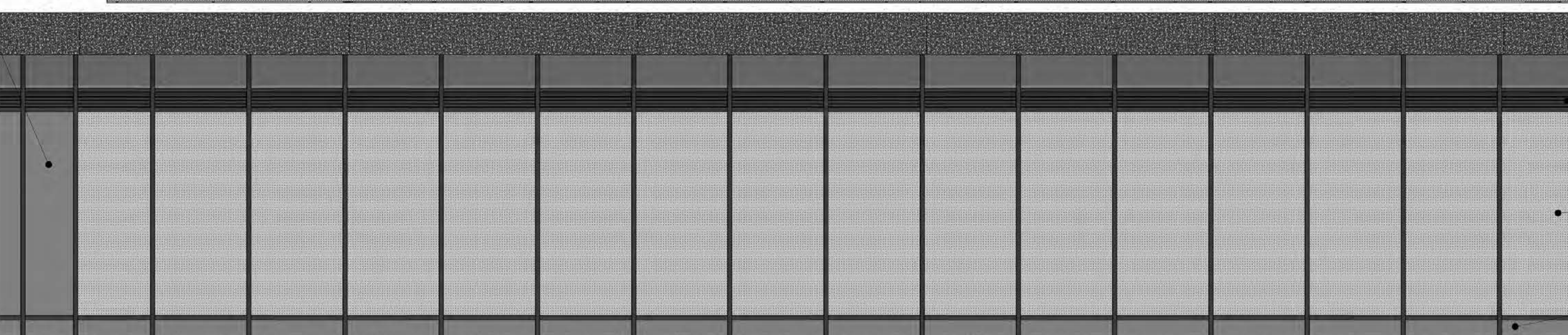
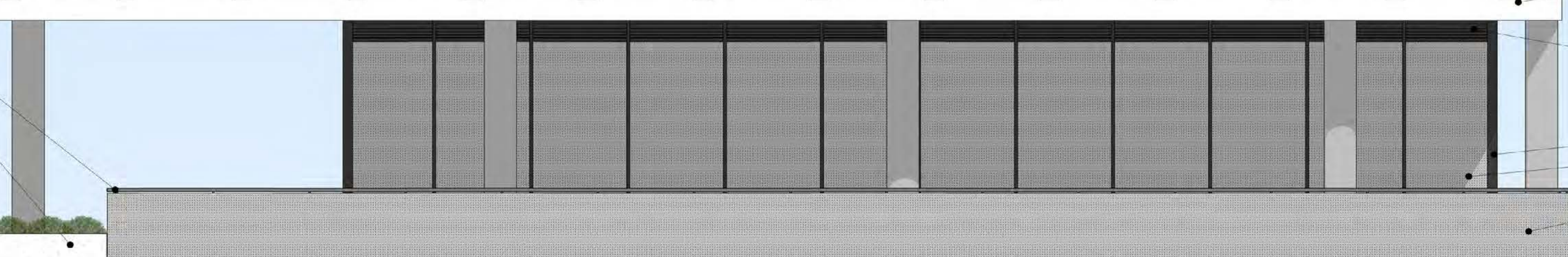
MEZZANINE

GROUND

YONGE STREET

MF-G  
PC-L  
GL-S

PC-L



THIS DRAWING, AS AN INSTRUMENT OF SERVICE, IS PROVIDED BY AND IS THE PROPERTY OF GRAZIANI + CORAZZA ARCHITECTS INC. THE CONTRACTOR MUST VERIFY AND ACCEPT RESPONSIBILITY FOR ALL DIMENSIONS AND CONDITIONS ON SITE AND MUST NOTIFY GRAZIANI + CORAZZA ARCHITECTS INC. OF ANY VARIATIONS FROM THE SUPPLIED INFORMATION. GRAZIANI + CORAZZA ARCHITECTS INC. IS NOT RESPONSIBLE FOR THE ACCURACY OF SURVEY, STRUCTURAL, MECHANICAL, ELECTRICAL, ETC., ENGINEERING INFORMATION SHOWN ON THIS DRAWING. REFER TO THE APPROPRIATE ENGINEERING DRAWINGS BEFORE PROCEEDING WITH THE WORK. CONSTRUCTION MUST CONFORM TO ALL APPLICABLE CODES AND REQUIREMENTS OF THE AUTHORITIES HAVING JURISDICTION, UNLESS OTHERWISE NOTED. NO INVESTIGATION HAS BEEN UNDERTAKEN OR REPORTED ON BY THIS OFFICE IN REGARDS TO THE ENVIRONMENTAL CONDITIONS OF THE SITE.

CONDITIONS FOR ELECTRONIC INFORMATION TRANSFER:  
ELECTRONIC INFORMATION IS SUPPLIED TO THE OTHER ASSOCIATED FIRMS TO ASSIST THEM IN THE EXECUTION OF THEIR WORK/REVIEW. THE RECIPIENT FIRMS MUST DETERMINE THE COMPLETENESS, APPROPRIATENESS/RELEVANCE OF THE INFORMATION IN RESPECT TO THEIR PARTICULAR RESPONSIBILITY.

GRAZIANI + CORAZZA ARCHITECTS INC. SHALL NOT BE RESPONSIBLE FOR:  
1. ERRORS, OMISSIONS, INCOMPLETENESS DUE TO LOSS OF INFORMATION IN WHOLE OR PART WHEN INFORMATION IS TRANSFERRED.  
2. TRANSMISSION OF ANY VIRUS OR DAMAGE TO THE RECEIVING ELECTRONIC SYSTEM WHEN INFORMATION IS TRANSFERRED.

Issues table with columns: No., Date, Description, Issued by. It lists two issues related to SPA and OLT submissions.

MATERIAL LEGEND table listing various materials and finishes such as VISION GLASS, GLASS RAILING, MULLION FRAME, and METAL PANEL with their respective color and frame specifications.

Professional stamps and logos for Graziani + Corazza Architects, Ontario Association of Architects, and Sudgroup.

Project information including: Project Architect: E. CORAZZA, Assistant Designer: L. WONG/J. OH, Drawn By: J. OH, Checked By: D. BIASE, Plot Date: APR. 20. 2023, Job #: 1736.19.

Orientation: SOUTH, Scale: 1:50, Drawing ID: A406



6TH

5TH

4TH

3RD

2ND

MEZZANINE

GROUND

EAST PROPERTY LINE

WEST PROPERTY LINE

400  
ROAD WIDENING

- MP-W
- ML-G
- MF-G
- GL-V

- MF-G
- MP-W
- MP-W
- ML-C
- GL-VB
- MF-C
- MF-G

- GR-B
- PC-L
- PC-D
- ML-C
- GL-VB
- GL-S
- PC-D
- PC-D
- ML-C
- MF-C



YONGE STREET



THIS DRAWING, AS AN INSTRUMENT OF SERVICE, IS PROVIDED BY AND IS THE PROPERTY OF GRAZIANI + CORAZZA ARCHITECTS INC. THE CONTRACTOR MUST VERIFY AND ACCEPT RESPONSIBILITY FOR ALL DIMENSIONS AND CONDITIONS ON SITE AND MUST NOTIFY GRAZIANI + CORAZZA ARCHITECTS INC. OF ANY VARIATIONS FROM THE SUPPLIED INFORMATION. GRAZIANI + CORAZZA ARCHITECTS INC. IS NOT RESPONSIBLE FOR THE ACCURACY OF SURVEY, STRUCTURAL, MECHANICAL, ELECTRICAL, ETC. ENGINEERING INFORMATION SHOWN ON THIS DRAWING. REFER TO THE APPROPRIATE ENGINEERING DRAWINGS BEFORE PROCEEDING WITH THE WORK. CONSTRUCTION MUST CONFORM TO ALL APPLICABLE CODES AND REQUIREMENTS OF THE AUTHORITIES HAVING JURISDICTION, UNLESS OTHERWISE NOTED. NO INVESTIGATION HAS BEEN UNDERTAKEN OR REPORTED ON BY THIS OFFICE IN REGARDS TO THE ENVIRONMENTAL CONDITIONS OF THIS SITE.

THIS DRAWING IS NOT TO BE SCALED. ALL ARCHITECTURAL SYMBOLS INDICATED ON THIS DRAWING ARE GRAPHIC REPRESENTATIONS ONLY.

THIS DRAWING IS NOT TO BE USED FOR CONSTRUCTION PURPOSES UNLESS COUNTERSIGNED BY THE ARCHITECT.

CONDITIONS FOR ELECTRONIC INFORMATION TRANSFER:

ELECTRONIC INFORMATION IS SUPPLIED TO THE OTHER ASSOCIATED FIRMS TO ASSIST THEM IN THE EXECUTION OF THEIR WORK/REVIEW. THE RECIPIENT FIRMS MUST DETERMINE THE COMPLETENESS / APPROPRIATENESS / RELEVANCE OF THE INFORMATION IN RESPECT TO THEIR PARTICULAR RESPONSIBILITY.

GRAZIANI + CORAZZA ARCHITECTS INC. SHALL NOT BE RESPONSIBLE FOR:  
 1. ERRORS, OMISSIONS, INCOMPLETENESS DUE TO LOSS OF INFORMATION IN WHOLE OR PART WHEN INFORMATION IS TRANSFERRED.  
 2. TRANSMISSION OF ANY VIRUS OR DAMAGE TO THE RECEIVING ELECTRONIC SYSTEM WHEN INFORMATION IS TRANSFERRED.

Issues:

No.	Date	Description	Issued by
01	NOV 03 2021	ISSUED FOR SPA SUBMISSION	E.C.
02	APR 20 2023	ISSUED FOR OLI SUBMISSION	E.C.

MATERIAL LEGEND

- GL-V VISION GLASS  
GLASS: CLEAR  
FRAME: GREY/CHARCOAL
- GL-F VISION GLASS - BIRD FRIENDLY  
GLASS: CLEAR  
FRAME: GREY/CHARCOAL  
NOTE: ALLOW FOR BIRD FRET PATTERN NO MORE THAN 20mm BY 10mm AS MIN HEIGHT FROM GROUND FLOOR AND AN HEIGHT FROM VARIOUS GREEN ROOF CONDITIONS
- GL-R GLASS RAILING  
GLASS: CLEAR  
FRAME: GREY
- GL-S GLASS RAILING  
GLASS: CLEAR  
FRAME: GREY  
NOTE: ALLOW FOR BIRD FRET PATTERN NO MORE THAN 100mm x 100mm AT 18m HEIGHT FROM GROUND FLOOR AND AN HEIGHT FROM VARIOUS GREEN ROOF CONDITIONS
- GL-T GLASS RAILING SCREEN - FROSTED  
GLASS: FROSTED WHITE  
FRAME: GREY
- ML-W MULLION FRAME - WHITE  
WHITE
- ML-G MULLION FRAME - GREY  
GREY
- ML-C MULLION FRAME - CHARCOAL  
CHARCOAL
- GL-S GLAZED SPANDREL PANEL - GREY  
GLASS: GREY
- ML-D PREFINISHED METAL LOUVER/GRILLE  
GREY
- ML-C PREFINISHED METAL LOUVER/GRILLE  
CHARCOAL
- MP-W METAL PANEL - WHITE  
WHITE
- MP-G METAL PANEL - GREY  
GREY
- PC-L PRECAST PANEL - LIGHT  
WHITE
- PC-D PRECAST PANEL - DARK  
CHARCOAL

NOTE: IF EXACT SPECIFIED COLOUR IS NOT AVAILABLE, ATTEMPT COLOUR MATCH AND SUBMIT ALTERNATIVE SAMPLES FOR ARCHITECTS APPROVAL.

No.	Date	Description	Issued by
Issued for revisions:			



8400 JANE STREET, BUILDING D, SUITE 300, CONCORD, ONTARIO L4K 4L8  
 PHONE: 905.795.2801 FAX: 905.795.2844 WWW.GC-ARCHITECTS.COM

PROPOSED MIXED-USE DEVELOPMENT

2010-2050 YONGE STREET



TORONTO ONTARIO

Project Architect : E. CORAZZA  
 Assistant Designer : L. WONG/J.O.H.  
 Drawn By : J.O.H.  
 Checked By : D. BIASE  
 Plot Date : APR. 20. 2023  
 Job # : 1736.19

NORTH

1:50 A407



THIS DRAWING, AS AN INSTRUMENT OF SERVICE, IS PROVIDED BY AND IS THE PROPERTY OF GRAZIANI - CORAZZA ARCHITECTS INC. THE CONTRACTOR MUST VERIFY AND ACCEPT RESPONSIBILITY FOR ALL DIMENSIONS AND CONDITIONS ON SITE AND MUST NOTIFY GRAZIANI - CORAZZA ARCHITECTS INC. OF ANY VARIATIONS FROM THE SUPPLIED INFORMATION. GRAZIANI - CORAZZA ARCHITECTS INC. IS NOT RESPONSIBLE FOR THE ACCURACY OF SURVEY, STRUCTURAL, MECHANICAL, ELECTRICAL, ETC. ENGINEERING INFORMATION SHOWN ON THIS DRAWING. REFER TO THE APPROPRIATE ENGINEERING DRAWINGS BEFORE PROCEEDING WITH THE WORK. CONSTRUCTION MUST CONFORM TO ALL APPLICABLE CODES AND REQUIREMENTS OF THE AUTHORITIES HAVING JURISDICTION, UNLESS OTHERWISE NOTED. NO INVESTIGATION HAS BEEN UNDERTAKEN OR REPORTED ON BY THIS OFFICE IN REGARDS TO THE ENVIRONMENTAL CONDITION OF THIS SITE.

THIS DRAWING IS NOT TO BE SCALED. ALL ARCHITECTURAL SYMBOLS INDICATED ON THIS DRAWING ARE GRAPHIC REPRESENTATIONS ONLY.

THIS DRAWING IS NOT TO BE USED FOR CONSTRUCTION PURPOSES UNLESS COUNTERSIGNED BY THE ARCHITECT.

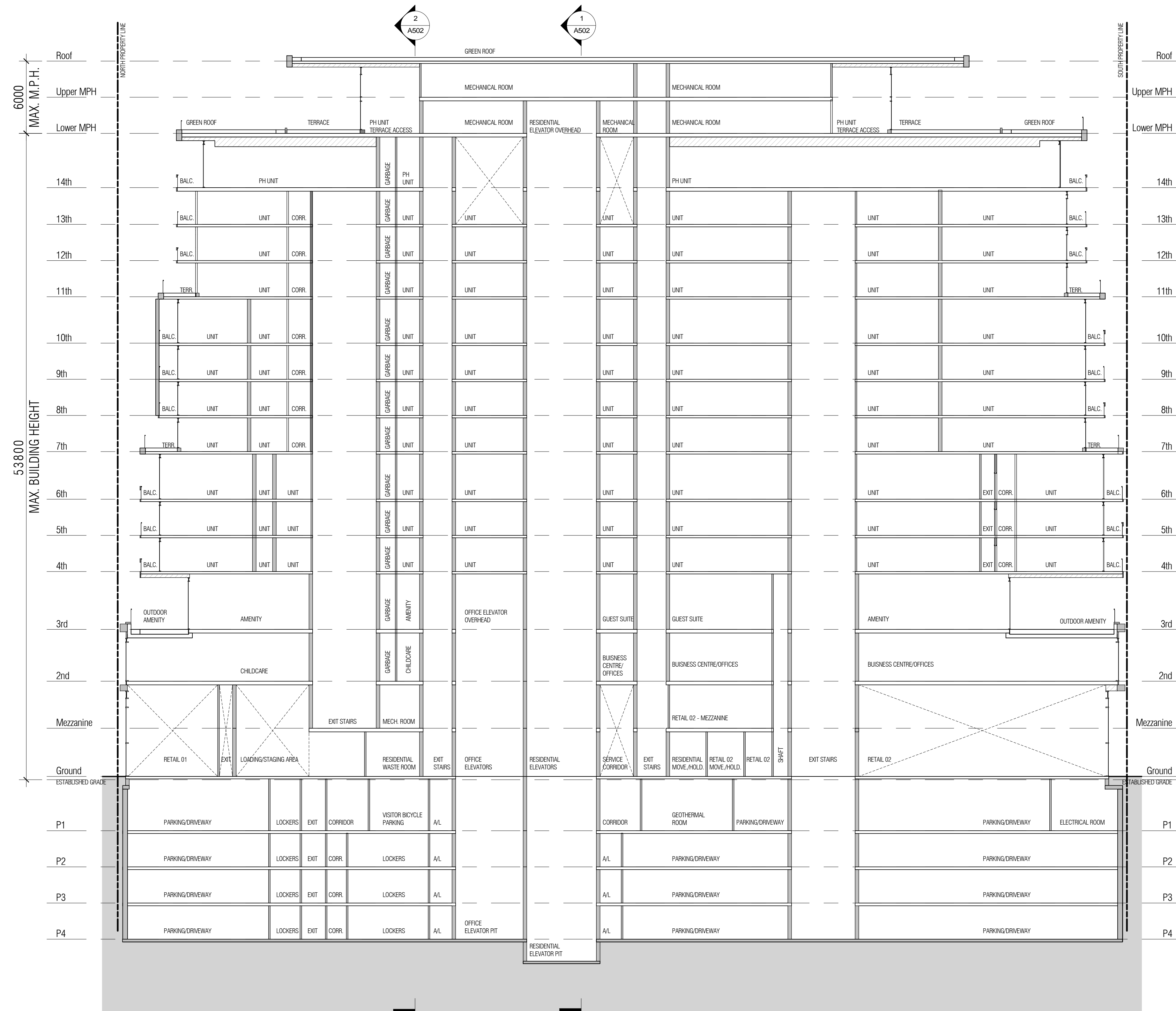
CONDITIONS FOR ELECTRONIC INFORMATION TRANSFER:

ELECTRONIC INFORMATION IS SUPPLIED TO THE OTHER ASSOCIATED FIRMS TO ASSIST THEM IN THE EXECUTION OF THEIR WORK/REVIEW. THE RECIPIENT FIRMS MUST DETERMINE THE COMPLETENESS/APPROPRIATENESS/RELEVANCE OF THE INFORMATION IN RESPECT TO THEIR PARTICULAR RESPONSIBILITY.

GRAZIANI - CORAZZA ARCHITECTS INC. SHALL NOT BE RESPONSIBLE FOR:  
 1. ERRORS, OMISSIONS, INCOMPLETENESS DUE TO LOSS OF INFORMATION IN WHOLE OR PART WHEN INFORMATION IS TRANSFERRED.  
 2. TRANSMISSION OF ANY VIRUS OR DAMAGE TO THE RECEIVING ELECTRONIC SYSTEM WHEN INFORMATION IS TRANSFERRED.

ISSUANCES

No.	Date	Description	Issued by
01	NOV 03 2021	ISSUED FOR SPA SUBMISSION	E.C.
02	APR 20 2023	ISSUED FOR OLT SUBMISSION	E.C.



No.	Date	Description	Issued by
-----	------	-------------	-----------

Issued for revisions



8400 JANE STREET, BUILDING D, SUITE 300, CONCORD, ONTARIO L4K 4L8  
 PHONE: 905.795.2601 FAX: 905.795.2644 WWW.GC-ARCHITECTS.COM

PROPOSED MIXED-USE DEVELOPMENT

2010-2050 YONGE STREET



TORONTO ONTARIO

Project Architect : E.CORAZZA  
 Assistant Designer : L.WONG/J.OH  
 Drawn By : J.OH  
 Checked By : D.BIASE  
 Plot Date : APR.20.2023  
 Job # : 1736.19

NORTH - SOUTH SECTION

1:200 A501

THIS DRAWING, AS AN INSTRUMENT OF SERVICE, IS PROVIDED BY AND IS THE PROPERTY OF GRAZIANI - CORAZZA ARCHITECTS INC. THE CONTRACTOR MUST VERIFY AND ACCEPT RESPONSIBILITY FOR ALL DIMENSIONS AND CONDITIONS ON SITE AND MUST NOTIFY GRAZIANI - CORAZZA ARCHITECTS INC. OF ANY VARIATIONS FROM THE SUPPLIED INFORMATION. GRAZIANI - CORAZZA ARCHITECTS INC. IS NOT RESPONSIBLE FOR THE ACCURACY OF SURVEY, STRUCTURAL, MECHANICAL, ELECTRICAL, ETC. ENGINEERING INFORMATION SHOWN ON THIS DRAWING. REFER TO THE APPROPRIATE ENGINEERING DRAWINGS BEFORE PROCEEDING WITH THE WORK. CONSTRUCTION MUST CONFORM TO ALL APPLICABLE CODES AND REQUIREMENTS OF THE AUTHORITIES HAVING JURISDICTION, UNLESS OTHERWISE NOTED. NO INVESTIGATION HAS BEEN UNDERTAKEN OR REPORTED ON BY THIS OFFICE IN REGARDS TO THE ENVIRONMENTAL CONDITION OF THIS SITE.

THIS DRAWING IS NOT TO BE SCALED. ALL ARCHITECTURAL SYMBOLS INDICATED ON THIS DRAWING ARE GRAPHIC REPRESENTATIONS ONLY.

THIS DRAWING IS NOT TO BE USED FOR CONSTRUCTION PURPOSES UNTIL COUNTERSIGNED BY THE ARCHITECT.

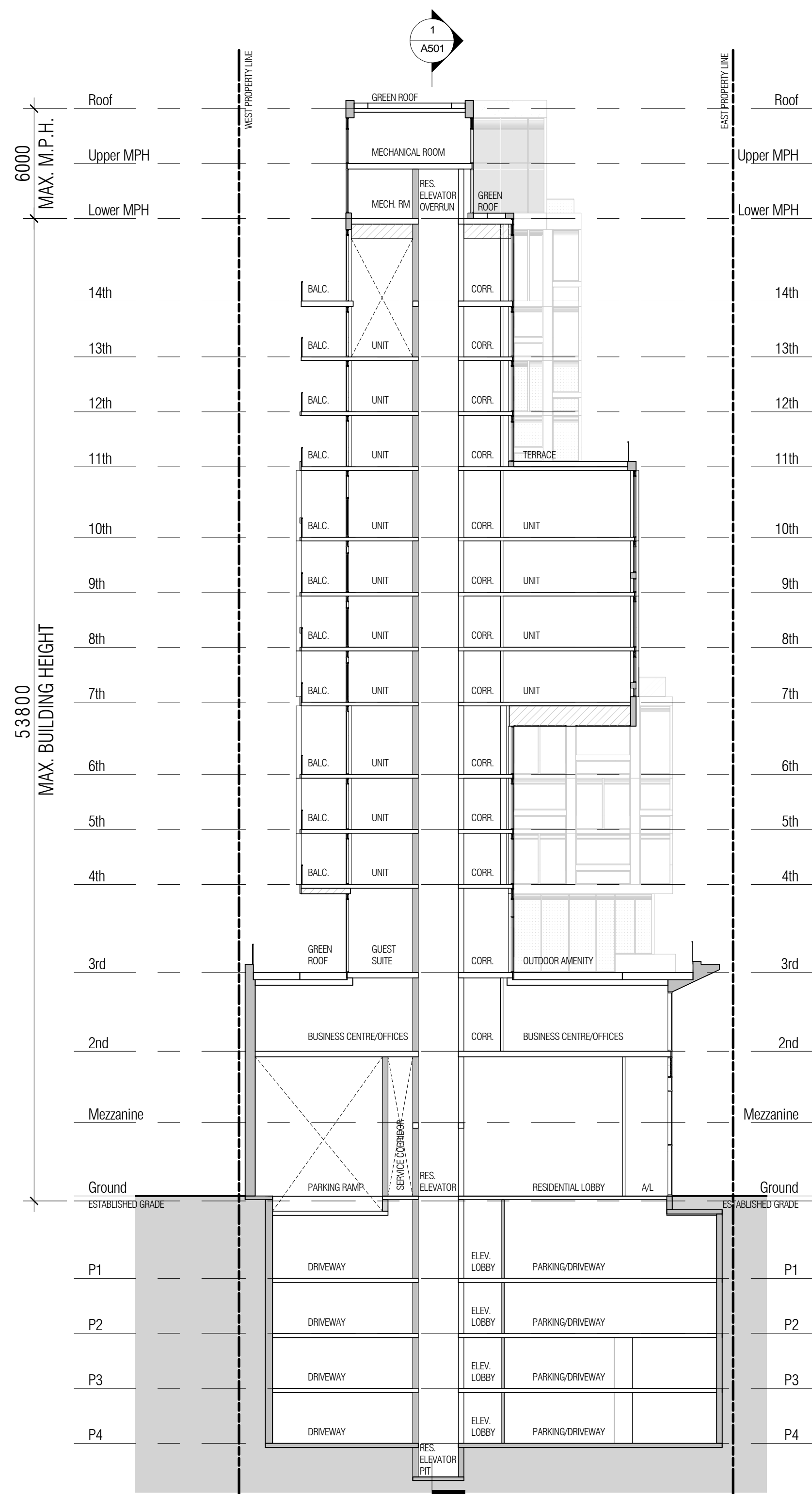
CONDITIONS FOR ELECTRONIC INFORMATION TRANSFER:

ELECTRONIC INFORMATION IS SUPPLIED TO THE OTHER ASSOCIATED FIRMS TO ASSIST THEM IN THE EXECUTION OF THEIR WORK/REVIEW. THE RECIPIENT FIRMS MUST DETERMINE THE COMPLETENESS/APPROPRIATENESS/RELEVANCE OF THE INFORMATION IN RESPECT TO THEIR PARTICULAR RESPONSIBILITY.

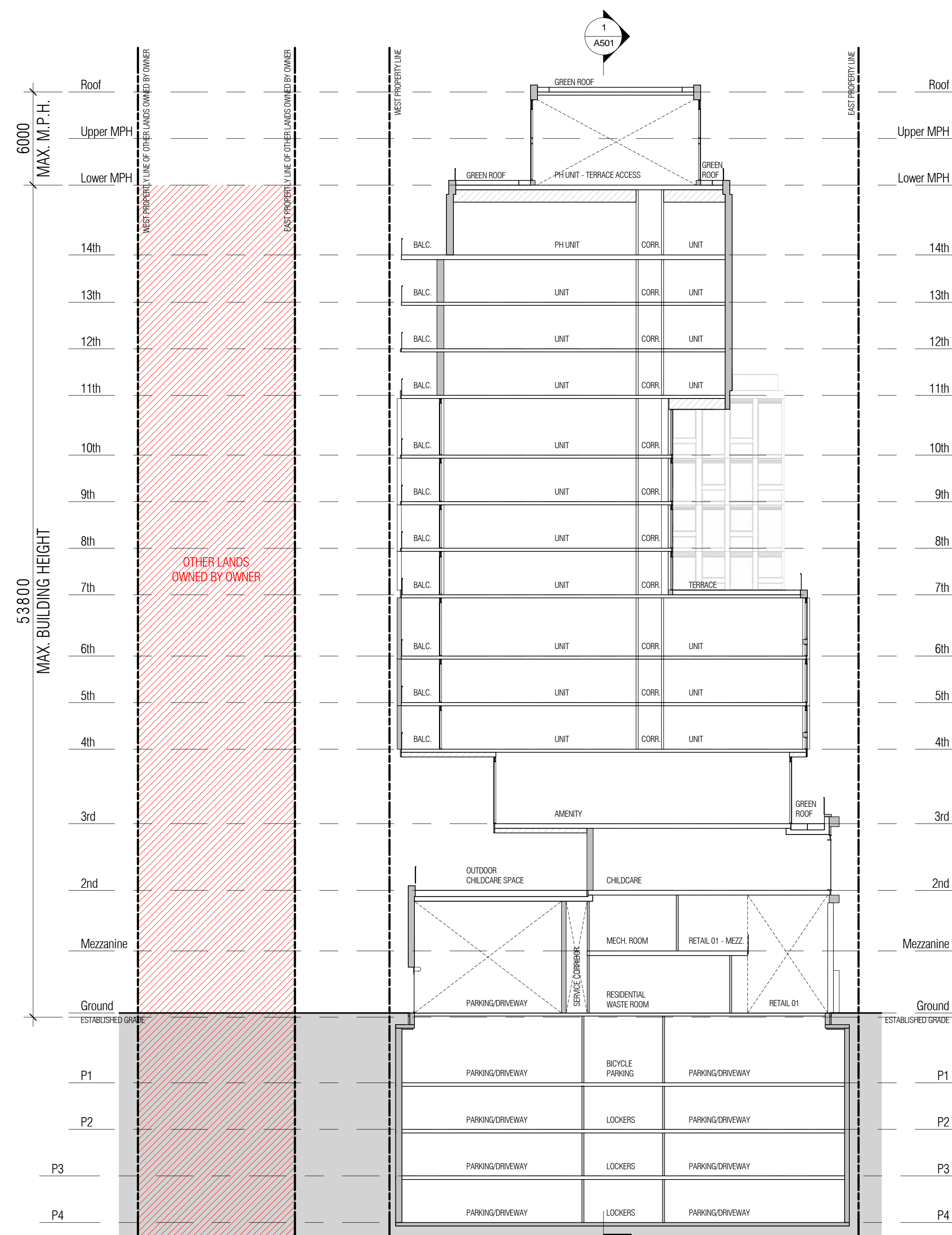
GRAZIANI - CORAZZA ARCHITECTS INC. SHALL NOT BE RESPONSIBLE FOR:  
 1. ERRORS, OMISSIONS, INCOMPLETENESS DUE TO LOSS OF INFORMATION IN WHOLE OR PART WHEN INFORMATION IS TRANSFERRED.  
 2. TRANSMISSION OF ANY VIRUS OR DAMAGE TO THE RECEIVING ELECTRONIC SYSTEM WHEN INFORMATION IS TRANSFERRED.

ISSUANCES

No.	Date	Description	Issued by
01	NOV 03 2021	ISSUED FOR SPA SUBMISSION	E.C.
02	APR 20 2023	ISSUED FOR OLT SUBMISSION	E.C.



1 W-E Section - Openings  
 A502 1:200



2 W-E Section - Childcare  
 A502 1:200

No.	Date	Description	Issued by
-----	------	-------------	-----------

Issued for revisions:

GRAZIANI CORAZZA ARCHITECTS  
 ENZO M. CORAZZA  
 LICENCE #702

8400 JANE STREET, BUILDING D, SUITE 300, CONCORD, ONTARIO L4K 4L8  
 PHONE: 905.795.2601 FAX: 905.795.2644 WWW.GC-ARCHITECTS.COM

PROPOSED MIXED-USE DEVELOPMENT  
 2010-2050 YONGE STREET

TORONTO sudgroup ONTARIO  
 Group, Design, Development and Investment

Project Architect : E. CORAZZA  
 Assistant Designer : L. WONG/J.OH  
 Drawn By : J.OH  
 Checked By : D. BIASE  
 Plot Date : APR. 20. 2023  
 Job # : 1736.19

WEST - EAST SECTIONS