

- Legend**
- 162.19 PROPOSED GRADES BY COUNTERPOINT ENGINEERING
 - 163.67EX EXISTED GRADES FROM COUNTERPOINT ENGINEERING
 - PROPOSED FREESTANDING FIRE CONNECTION BY IFBI
 - TC TOP OF CURB
 - BC BOTTOM OF CURB
 - TW TOP OF WALL
 - FH FIRE HYDRANT
 - DIRECTION OF SURFACE DRAINAGE
 - AD/CB AREA DRAINS/CATCH BASINS
 - MH MANHOLES
 - [Red Hatched Area] PROPOSED SOIL CELL AREA
 - [Circle with X] EXISTING TREES TO REMAIN
CW TREE HOARDING

Note: REFER TO DRAWINGS PREPARED BY COUNTERPOINT ENGINEERING FOR GRADING AND SERVICING

| No | Date | Revisions | By |
|-----|------------|---------------------------|----|
| 2.0 | 05-18-2023 | ISSUED FOR SPA SUBMISSION | GM |
| 1.0 | 06-30-2021 | ISSUED FOR SPA SUBMISSION | GM |

This drawing is an instrument of service, is provided by and is the property of the MBTW Group. The contractor shall check and verify all dimensions and report all errors and omissions to the Landscape Architect whose seal is affixed to this drawing before proceeding with the work. This drawing is not to be scaled.

Designed By

North Arrow

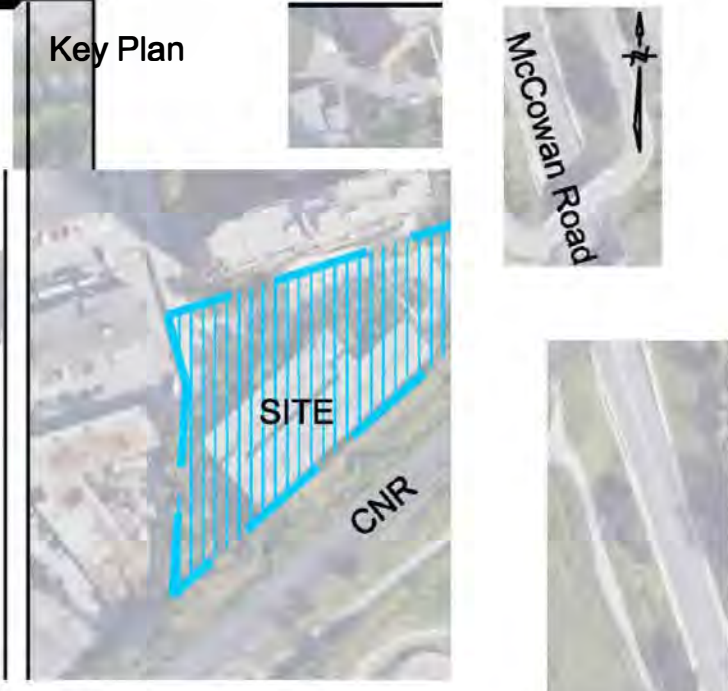
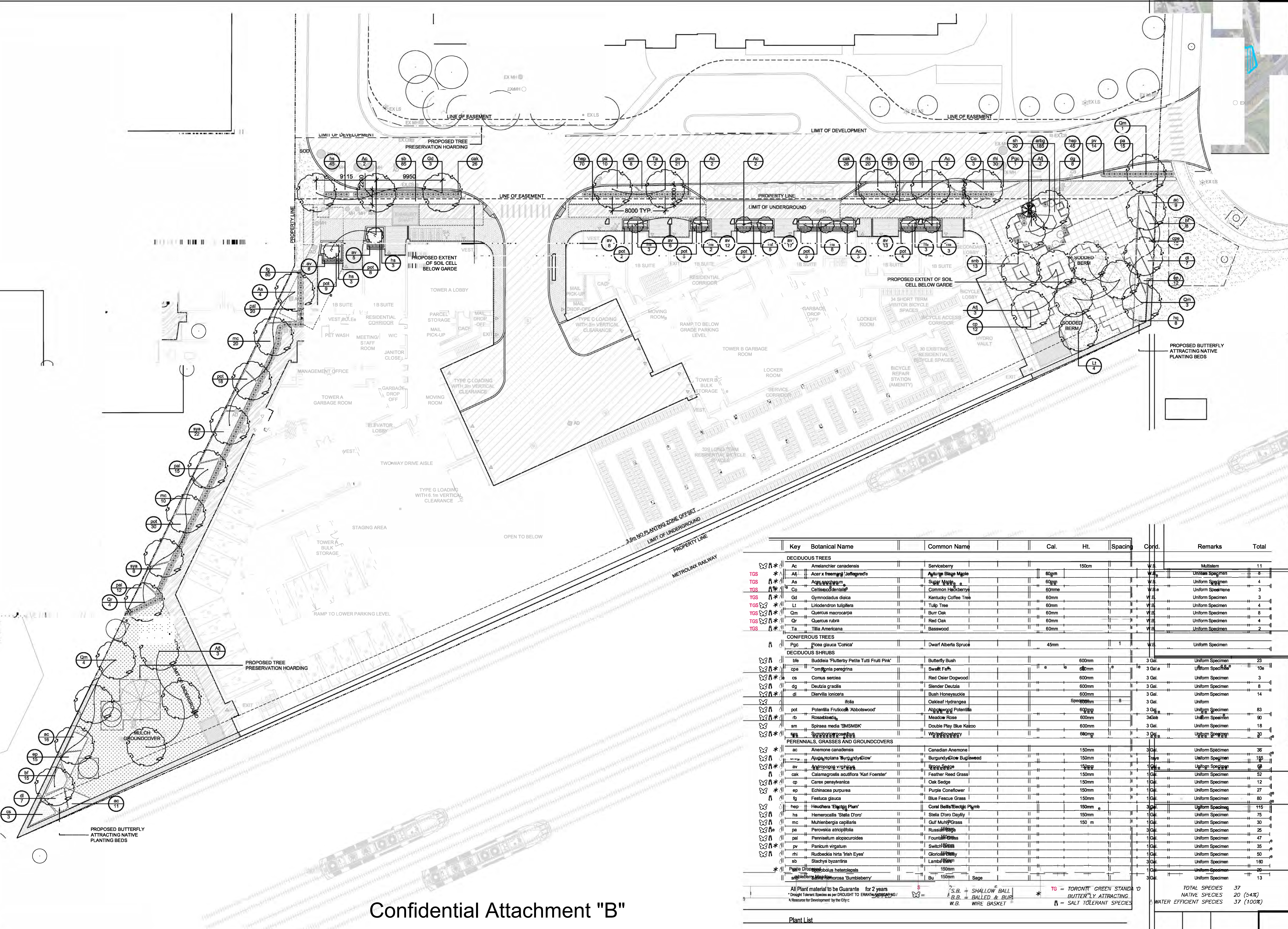
Blauson Assets Management Ltd.
c/o Ling Kee Group

the mbtw group
255 Winkfield Ave., Unit 14 | Toronto, Ontario, Canada M6K 1S6
T: (416) 463-7767 | F: (416) 463-1003 | www.mbtw.com

Project Name:
320 McCowan Road
City of Toronto

Sheet Title:
Grading and Utility Overlay Plan

| | | | |
|-----------------------------------|--------------------|--------------------|---------------------|
| Designed: GGM | Drawn: CS | Scale: As Noted | Drawing No.: L-2 |
| Date of Drawing: June 24, 2021 | Job No.: BAM001 | | |



Legend

- PROPOSED DECIDUOUS TREES
- PROPOSED CONIFEROUS TREES
- PROPOSED ORNAMENTAL TREES
- EXISTING TREES TO REMAIN
- EXISTING TREES TO REMAIN WITH TREE HOARDING
- PROPOSED SHRUB PLANTING
- PROPOSED SOD
- PROPOSED MULCH
- PROPOSED PLANTING KEY
- PROPOSED SOIL CELL AREA

PLANTING NOTES:

- ALL LARGE SHADE TREES WILL BE PROVIDED WITH MIN. 30m³ OF APPROVED PLANTING SOIL IN CONTINUOUS SOIL TRENCHES AS REQUIRED BY THE CITY OF TORONTO.
- MIN. 50% OF PROPOSED LANDSCAPED AREAS TO BE DROUGHT TOLERANT SPECIES.
- REFER TO ARBORIST REPORT AND TRP FOR ADDITIONAL INFORMATION - PROVIDED BY BRUCE TREE EXPERT COMPANY LTD.
- PLANTS TO BE IRRIGATED ONCE WEEKLY FOR 2 YEARS DURING GROWING SEASONS (MAY TO OCTOBER).

| Key | Botanical Name | Common Name | Cal. | Ht. | Spacing | Cond. | Remarks | Total |
|---|---|---------------------------|------|-------|---------|--------|------------------|-------|
| DECIDUOUS TREES | | | | | | | | |
| Ac | Ameniacler canadensis | Serviceberry | | 150cm | | W.S. | Multistem | 11 |
| Ac | Acer x freemanii 'Jefferson' | Aylmer Blage Maple | 60mm | | | W.S. | Uniform Specimen | 8 |
| As | Asplenium | Sugar Maple | 60mm | | | W.S. | Uniform Specimen | 4 |
| Co | Celastrus scandens | Common Highberry | 60mm | | | W.S. | Uniform Specimen | 3 |
| Gd | Gymnocladia dioica | Kentucky Coffee Tree | 60mm | | | W.S. | Uniform Specimen | 3 |
| Lt | Liriodendron tulipifera | Tulip Tree | 60mm | | | W.S. | Uniform Specimen | 4 |
| Qm | Quercus macrocarpa | Burr Oak | 60mm | | | W.S. | Uniform Specimen | 8 |
| Qr | Quercus rubra | Red Oak | 60mm | | | W.S. | Uniform Specimen | 4 |
| Ta | Tilia Americana | Basswood | 60mm | | | W.S. | Uniform Specimen | 2 |
| CONIFEROUS TREES | | | | | | | | |
| Pgc | Picea glauca 'Conica' | Dwarf Alberta Spruce | 45mm | | | W.S. | Uniform Specimen | 1 |
| DECIDUOUS SHRUBS | | | | | | | | |
| Ble | Buddleia 'Flutterby Petite Tutti Frutti Pink' | Butterfly Bush | | 600mm | | 3 Gal. | Uniform Specimen | 23 |
| Cpa | Cornus pergrina | Sweet Fern | | 600mm | | 3 Gal. | Uniform Specimen | 10 |
| Co | Cornus sericea | Red Osier Dogwood | | 600mm | | 3 Gal. | Uniform Specimen | 3 |
| Dg | Deutzia gracilis | Slender Deutzia | | 600mm | | 3 Gal. | Uniform Specimen | 8 |
| Di | Diervilla lonicera | Bush Honeysuckle | | 600mm | | 3 Gal. | Uniform Specimen | 14 |
| Ho | Heuchera | Oakleaf Hydrangea | | 600mm | | 3 Gal. | Uniform | 8 |
| Pot | Potentilla fruticosa 'Abbotswood' | Abbotswood Potentilla | | 600mm | | 3 Gal. | Uniform Specimen | 83 |
| Rb | Rosa blanda | Meadow Rose | | 600mm | | 3 Gal. | Uniform Specimen | 90 |
| Sm | Spiraea media 'SMSMBK' | Double Play Blue Katoo | | 600mm | | 3 Gal. | Uniform Specimen | 18 |
| Sp | Syringa | White Snowflake | | 600mm | | 3 Gal. | Uniform Specimen | 30 |
| PERENNIALS, GRASSES AND GROUNDCOVERS | | | | | | | | |
| Ac | Anemone canadensis | Canadian Anemone | | 150mm | | 3 Gal. | Uniform Specimen | 35 |
| Ag | Agastache 'Burgundy Glow' | Burgundy Glow Bugleweed | | 150mm | | 3 Gal. | Uniform Specimen | 18 |
| Av | Andropogon virginicus | Bird's Foot | | 150mm | | 3 Gal. | Uniform Specimen | 6 |
| Cak | Calamagrostis scutiflora 'Carl Foerster' | Feather Reed Grass | | 150mm | | 1 Gal. | Uniform Specimen | 52 |
| Cp | Carex pensylvanica | Oak Sedge | | 150mm | | 1 Gal. | Uniform Specimen | 12 |
| Ep | Echinacea purpurea | Purple Coneflower | | 150mm | | 1 Gal. | Uniform Specimen | 27 |
| Fg | Festuca glauca | Blue Fescue Grass | | 150mm | | 1 Gal. | Uniform Specimen | 80 |
| Hep | Heuchera 'Electric Plum' | Coral Bells/Electric Plum | | 150mm | | 3 Gal. | Uniform Specimen | 115 |
| Ho | Hemerocallis 'Stella D'oro' | Stella D'oro Day Lily | | 150mm | | 1 Gal. | Uniform Specimen | 75 |
| Mc | Muhlenbergia capillaris | Gulf Muhlenberg | | 150mm | | 1 Gal. | Uniform Specimen | 30 |
| Pa | Penstemon atrorubra | Russian Sage | | 150mm | | 3 Gal. | Uniform Specimen | 25 |
| Pm | Pennisetum alopecuroides | Four O'Clocks | | 150mm | | 1 Gal. | Uniform Specimen | 47 |
| Pv | Panicum virgatum | Switch Grass | | 150mm | | 1 Gal. | Uniform Specimen | 35 |
| Ru | Rudbeckia hirta 'Fish Eye' | Black-eyed Susan | | 150mm | | 1 Gal. | Uniform Specimen | 50 |
| St | Stachys byzantina | Lamb's Ears | | 150mm | | 3 Gal. | Uniform Specimen | 100 |
| St | Stachys byzantina | Lamb's Ears | | 150mm | | 1 Gal. | Uniform Specimen | 30 |
| Bu | Buena Vista | Sage | | 150mm | | 3 Gal. | Uniform Specimen | 13 |



Blauson Assets Management Ltd.
c/o Ling Kee Group

the mtbw group
Landscape Architecture & Planning
255 Woodbine Ave., Unit 14 | Toronto, Ontario, Canada M4B 1W8
(416) 493-7767 | (416) 493-8803 | www.mtbw.com

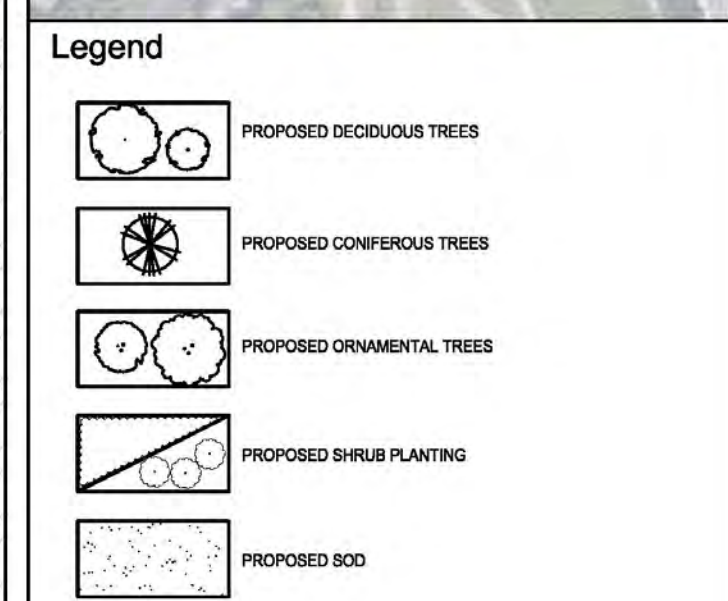
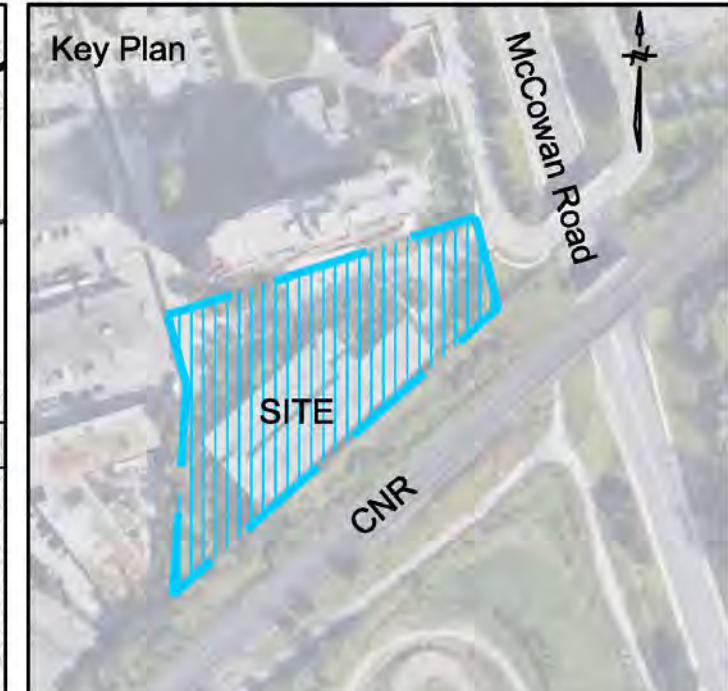
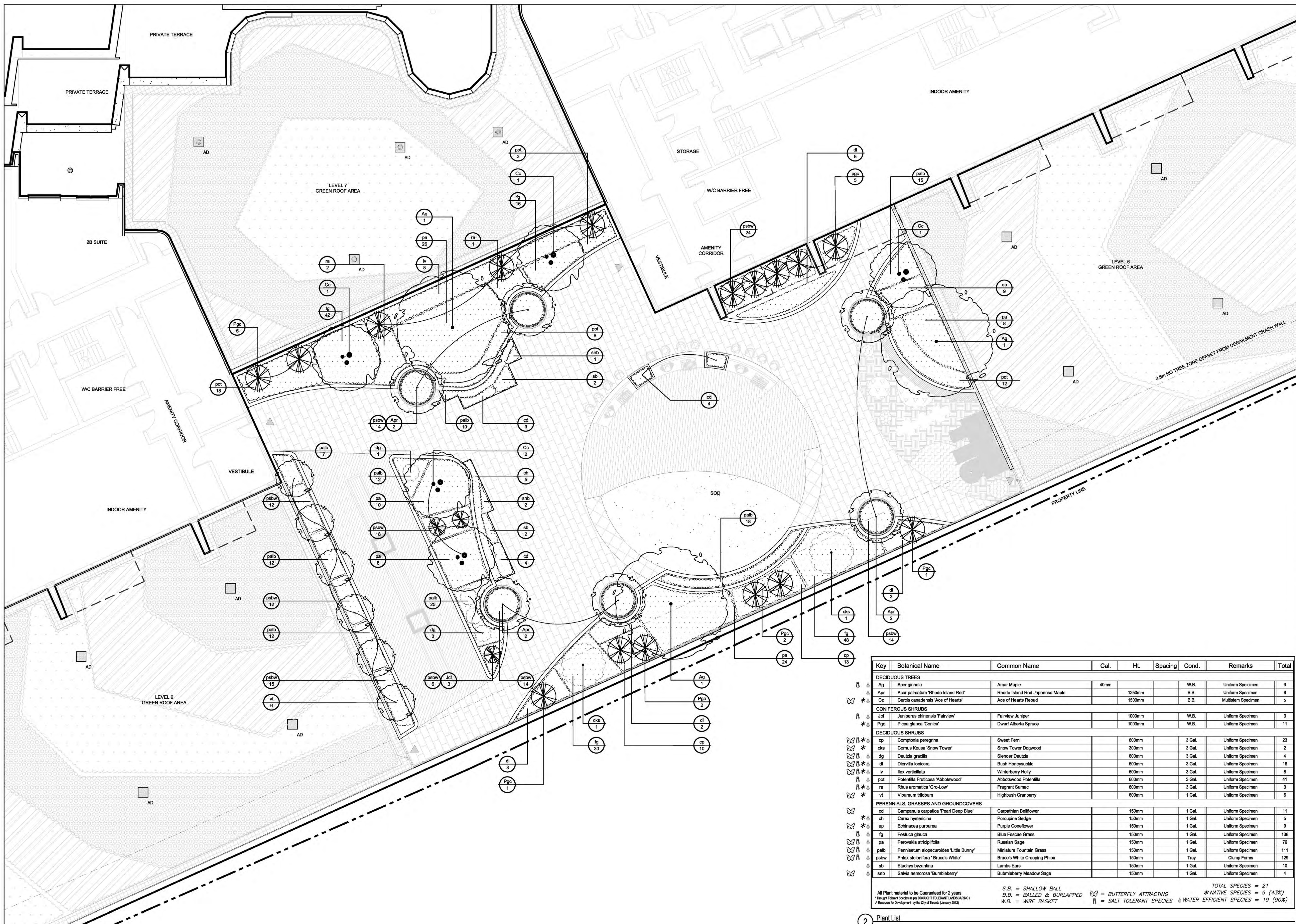
Project Name: 320 McCowan Road

City of Toronto

Ground Floor Planting Plan

Designed: GJM CS Scale: As Noted Drawing No.: L-3a
Date of Drawing: April 30, 2021 Job No.: BAM001

Confidential Attachment "B"



PLANTING NOTE:
 1. MIN. 50% OF PROPOSED LANDSCAPED AREA TO BE DROUGHT TOLERANT SPECIES

IRRIGATION NOTE:
 2. PLANTS TO BE IRRIGATED ONCE WEEKLY FOR 2 YEARS DURING GROWING SEASONS (MAY TO OCTOBER).

| | | | |
|-----|------------|---------------------------|----|
| 2.0 | 05-18-2020 | ISSUED FOR SPA SUBMISSION | GM |
| 1.0 | 07-09-2021 | ISSUED FOR SPA SUBMISSION | GM |

This drawing is an instrument of service, is provided by and is the property of the mbtw group. The contractor shall check and verify all dimensions and report all errors and omissions to the Landscape Architect whose seal is affixed to this drawing before proceeding with the work. This drawing is not to be scaled.



Blauson Assets Management Ltd.
 c/o Ling Kee Group

the mbtw group
 255 Wilsdale Ave., Unit 14 | Toronto, Ontario, Canada M6L 1S8
 T: (416) 463-7767 | F: (416) 463-1003 | www.mbtw.com

Project Name:
320 McCowan Road
 City of Toronto

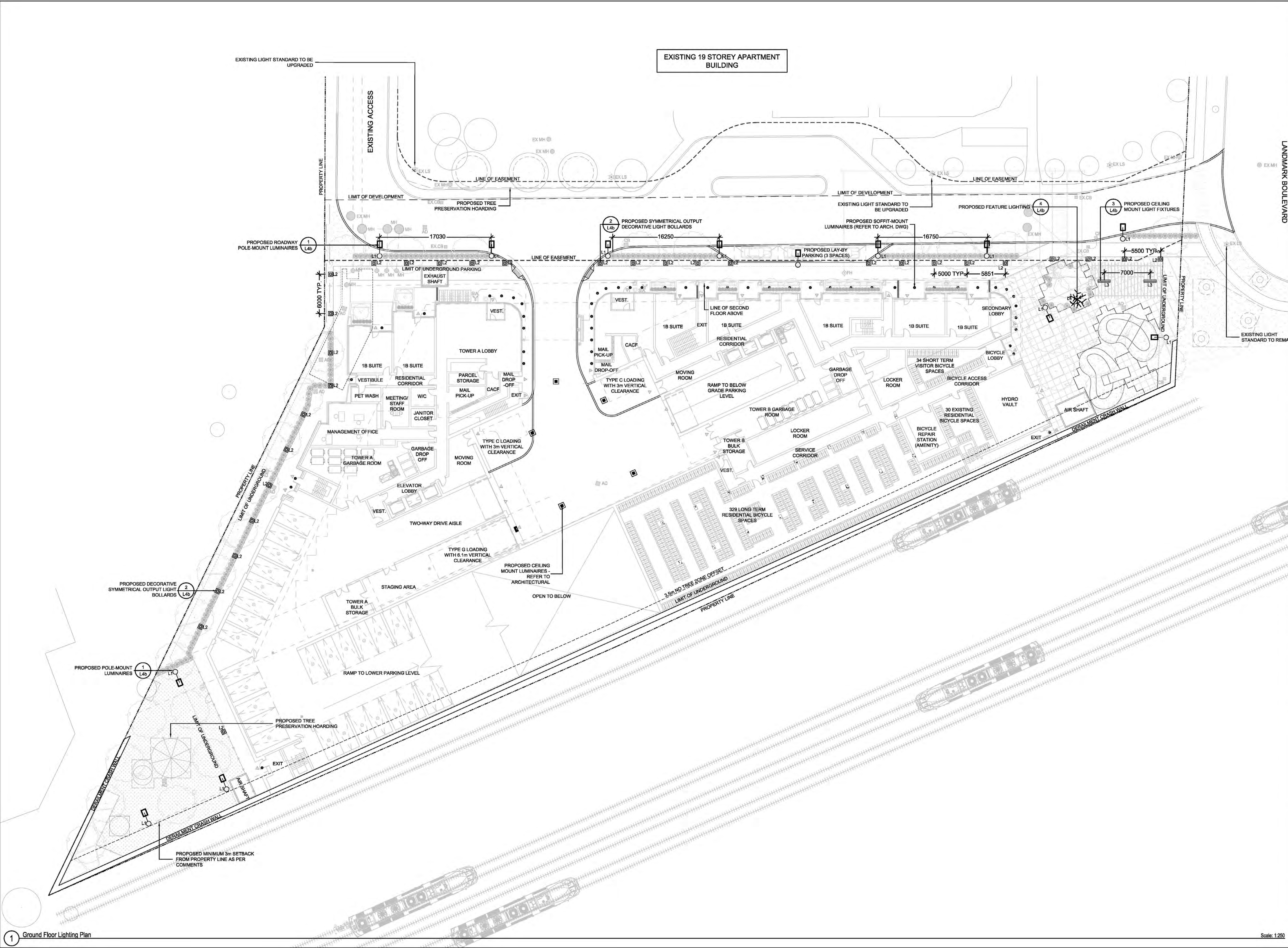
Sheet Title:
6th Floor Amenity Terrace Planting Plan

| | | | |
|------------------|----------|----------|--------------|
| Designed: | Drawn: | Scale: | Drawing No.: |
| GM | CS | As Noted | L-3b |
| Date of Drawing: | Job No.: | | |
| June 28, 2021 | BAM001 | | |

| Key | Botanical Name | Common Name | Cal. | Ht. | Spacing | Cond. | Remarks | Total |
|---|--|---------------------------------|------|--------|---------|--------|--------------------|-------|
| DECIDUOUS TREES | | | | | | | | |
| Ag | <i>Acer ginnala</i> | Amur Maple | 40mm | | | W.B. | Uniform Specimen | 3 |
| Apr | <i>Acer palmatum</i> 'Rhode Island Red' | Rhode Island Red Japanese Maple | | 1250mm | | B.B. | Uniform Specimen | 6 |
| Cc | <i>Cercis canadensis</i> 'Ace of Hearts' | Ace of Hearts Redbud | | 1500mm | | B.B. | Multistem Specimen | 5 |
| CONIFEROUS SHRUBS | | | | | | | | |
| Jcf | <i>Juniperus chinensis</i> 'Fairview' | Fairview Juniper | | 1000mm | | W.B. | Uniform Specimen | 3 |
| Pgc | <i>Picea glauca</i> 'Conical' | Dwarf Alberta Spruce | | 1000mm | | W.B. | Uniform Specimen | 11 |
| DECIDUOUS SHRUBS | | | | | | | | |
| cp | <i>Comptonia peregrina</i> | Sweet Fern | | 600mm | | 3 Gal. | Uniform Specimen | 23 |
| cks | <i>Cornus Kousa</i> 'Snow Tower' | Snow Tower Dogwood | | 300mm | | 3 Gal. | Uniform Specimen | 2 |
| dg | <i>Diervilla gracilis</i> | Slender Deutzia | | 600mm | | 3 Gal. | Uniform Specimen | 4 |
| di | <i>Diervilla lonicera</i> | Bush Honeysuckle | | 600mm | | 3 Gal. | Uniform Specimen | 16 |
| iv | <i>Ilex verticillata</i> | Winterberry Holly | | 600mm | | 3 Gal. | Uniform Specimen | 8 |
| pot | <i>Potentilla Fruticosa</i> 'Abbotswood' | Abbotswood Potentilla | | 600mm | | 3 Gal. | Uniform Specimen | 41 |
| ra | <i>Rhus aromatica</i> 'Gro-Low' | Fragrant Sumac | | 600mm | | 3 Gal. | Uniform Specimen | 3 |
| vt | <i>Viburnum trilobum</i> | Highbush Cranberry | | 600mm | | 1 Gal. | Uniform Specimen | 6 |
| PERENNIALS, GRASSES AND GROUNDCOVERS | | | | | | | | |
| cd | <i>Campanula carpatica</i> 'Pearl Deep Blue' | Carpathian Bellflower | | 150mm | | 1 Gal. | Uniform Specimen | 11 |
| ch | <i>Carex hystericina</i> | Porcupine Sedge | | 150mm | | 1 Gal. | Uniform Specimen | 5 |
| ep | <i>Echinacea purpurea</i> | Purple Coneflower | | 150mm | | 1 Gal. | Uniform Specimen | 9 |
| fg | <i>Festuca glauca</i> | Blue Fescue Grass | | 150mm | | 1 Gal. | Uniform Specimen | 138 |
| pa | <i>Perovskia atriplicifolia</i> | Russian Sage | | 150mm | | 1 Gal. | Uniform Specimen | 78 |
| palb | <i>Pennisetum alopecuroides</i> 'Little Bunny' | Miniature Fountain Grass | | 150mm | | 1 Gal. | Uniform Specimen | 111 |
| psbw | <i>Phlox stolonifera</i> 'Bruce's White' | Bruce's White Creeping Phlox | | 150mm | | Tray | Clump Forms | 129 |
| sb | <i>Stachys byzantina</i> | Lamb's Ears | | 150mm | | 1 Gal. | Uniform Specimen | 10 |
| snb | <i>Salvia nemorosa</i> 'Bumbleberry' | Bumbleberry Meadow Sage | | 150mm | | 1 Gal. | Uniform Specimen | 4 |

S.B. = SHALLOW BALL
 B.B. = BALLED & BURLAPPED
 W.B. = WIRE BASKET
 ♂ = BUTTERFLY ATTRACTING
 ♀ = SALT TOLERANT SPECIES
 ♀ = WATER EFFICIENT SPECIES

TOTAL SPECIES = 21
 * NATIVE SPECIES = 9 (43%)
 † Drought Tolerant Species as per DROUGHT TOLERANT LANDSCAPING
 A Resource for Development by the City of Toronto (January 2012)



- Legend**
- EX LS EXISTING LIGHT STANDARD
 - L1 PROPOSED ROADWAY LUMINAIRE
 - L2 PROPOSED ASYMMETRICAL LIGHT BOLLARD
 - L3 PROPOSED CEILING MOUNT LUMINAIRE
 - L4 PROPOSED FEATURE LIGHTING
 - PROPOSED SOFFIT MOUNT LIGHT FIXTURES - REFER TO ARCHITECTURAL

LIGHTING NOTE:
ALL EXTERIOR LIGHT FIXTURES WILL BE DARK SKY COMPLIANT AS PER TGS REQUIREMENTS.

LIGHTING NOTE:
REFER TO DRAWING L4b - GROUND FLOOR LIGHTING DETAILS FOR FIXTURE SPECIFICATIONS

| No | Date | Revisions | By |
|-----|------------|-------------------------------|----|
| 2.0 | 05-19-2023 | ISSUED FOR SPA SUBMISSION | GM |
| 1.0 | 07-09-2021 | ISSUED FOR SITE PLAN APPROVAL | GM |

This drawing, as an instrument of service, is provided by and is the property of The MBTW Group. The contractor shall check and verify all dimensions and report all errors and omissions to the Landscape Architect whose seal is affixed to this drawing before proceeding with the work. This drawing is not to be scaled.

Designed By

North Arrow

Blauson Assets Management Ltd.
c/o Ling Kee Group

the mbtw group
255 Wilewood Ave., Unit 14 | Toronto, Ontario, Canada M6L 1S8
T: (416) 443-7787 | F: (416) 443-1883 | www.mbtw.com

Project Name:
320 McCowan Road
City of Toronto

Sheet Title:
Ground Floor Lighting Plan

| | | | |
|-----------------------------------|--------------|-----------------|--------------|
| Designed: GGM | Drawn: CS | Scale: 1:250 | Drawing No.: |
| Date of Drawing: June 25, 2021 | Job No.: | BAM001 | L-4a |

1 Ground Floor Lighting Plan

Scale: 1:250

STRUCTURA

Flight - C 18' - 32' Curved Round Aluminum Poles

FIXTURE TYPE: _____
PROJECT NAME: _____

ORDERING GUIDE: EXAMPLE: FLT-25-46-C1-U5-C7A1/2/2-STD

| | | | | | |
|-----|-----------------------------|-----|---|-------|-------------------|
| 1 | Series | 4 | Pole Finish | 7 | Fixture Mounting |
| FLT | Flight 8" O" Pole, 42" Base | 5A | Satin (rotary sandal aluminum) See color options on finishes technical sheet | 72384 | 2 @ 90deg |
| XL | Flight 8" O" Pole, 54" Base | C* | Custom Color | 72764 | 2 @ 90deg |
| 2 | Pole Height | CSM | | 73124 | 4 @ 45deg |
| 18 | 18' | 5 | Wall Thickness | 74504 | 4 1/2" x 4" Tenon |
| 20 | 20' | DI | 0.125" wall | | |
| 25 | 25' | D2 | 0.156" wall | | |
| 30 | 30' | D3 | 0.188" wall | | |
| 35 | 35' | D4 | 0.221" wall | | |
| 40 | 40' | D5 | 0.254" wall | | |
| 3 | Top Diameter | 6 | Base Finish | | |
| 45 | 4.5" Diameter | C* | See color options on finishes technical sheet | | |
| | | CSM | Custom Color | | |
| | | 8 | Special | | |
| | | STD | Standard | | |
| | | MOD | Modified | | |

1. Pole heights determine the pole minimum wind loading (per a given wind speed, see wind loading below).
2. Fixtures are shown in standard configuration.
3. See color options on finishes technical sheet.
4. See color options on finishes technical sheet.
5. See color options on finishes technical sheet.
6. See color options on finishes technical sheet.
7. See color options on finishes technical sheet.
8. See color options on finishes technical sheet.
9. See color options on finishes technical sheet.

©2021 STRUCTURA, INC. 45

1 Pole-Mount Light Fixtures Flight - C by Structura Scale: N.T.S.

STRUCTURA

Mac II Wood Body LED Bollard

FIXTURE TYPE: _____
PROJECT NAME: _____

ORDERING GUIDE: EXAMPLE: MAC II 42-L750-5-55-C7-UNV-STD

| | | | | | |
|--------|----------------|----|---|-----|---|
| 1 | Series | 4 | Light Source ¹⁾ | 7 | Metal Finish |
| MAC II | Mac II | 50 | Standard Output | C* | See color options on finishes technical sheet |
| 2 | Overall Height | 5 | Distribution | CSM | Custom Color |
| 32 | 32" | 3 | Type II | 8 | Voltage |
| 42 | 42" | 3B | Type III Rotated ²⁾ | UNV | 100-277V |
| | | 4 | Type IV | 9 | Special |
| | | 5 | Type V | STD | Standard |
| | | 6 | Wood Finish | MOD | Modified |
| | | | See color options on finishes technical sheet | | |

1. Check fixture for additional output options.
2. Type II rotated optics require bollard to be rotated so that the short side is towards the sidewalk.
3. See color options on finishes technical sheet.
4. See color options on finishes technical sheet.
5. See color options on finishes technical sheet.
6. See color options on finishes technical sheet.
7. See color options on finishes technical sheet.
8. See color options on finishes technical sheet.
9. See color options on finishes technical sheet.

©2021 STRUCTURA, INC. 45

2 Pedestrian Scale Light Bollards Mac II by Structura Scale: N.T.S.

STRUCTURA

Aura Illuminated Wooden Linear Pendant

FIXTURE TYPE: _____
PROJECT NAME: _____

ORDERING GUIDE: EXAMPLE: AURA-LNR-D-6-L50H0-51-CA-0F2-STD

| | | | | | | | |
|------|----------|-----|--------|-----|---|-------|-----------------------|
| 1 | Series | 4 | Length | 5 | Output | 9 | Outfeed ¹⁾ |
| AURA | Aura | 4 | 6' | 60 | High Output | Blank | No Outfeed |
| 2 | Series | 8 | 8' | 80 | Medium Output | OP | 1" Outfeed |
| LNR | Linear | 10 | 10' | 100 | High Output | OP2 | Outfeed + 2" Jumper |
| 3 | Lighting | 12 | 12' | 120 | Wood Finish | OP* | Outfeed + 4" Jumper |
| D | Direct | 5 | | 5* | See color options on finishes technical sheet | 10 | Special |
| | | L37 | | L37 | Mounting | STD | Standard |
| | | L30 | | L30 | See color options on finishes technical sheet | MOD | Modified |
| | | L40 | | L40 | | | |

1. Custom cable designed (see product brochure).
2. Custom cable designed (see product brochure).
3. Weight and PFD based on fixture mounting options.
4. Call for details on cable strain applications with cable and cable work. Additional detail and information per power supply (LF to 30' for HO, and 20' for HD).

©2021 STRUCTURA, INC. 125

3 Ceiling Mount Light Fixture Aura Linear by Structura Scale: N.T.S.

ALBERO

LED

SPECIFICATION SHEET PAGE 1 OF 2

Project Name: _____
Type: _____

Outdoor luminaire with down light symmetrical optic.

Luminaire characteristics:
Power input: 123W
Lumens: 2570 or 2750lm (addendum)
Luminaire efficacy: 21 or 22lm/W

Source: White LED (LM-80 tested)
4000K, 80CRI
Lumen maintenance: >80% of initial lumens at 50,000 hours (LM-79 tested)

Optics: 360° down light symmetrical optic.

Material: Pole on mounting base (anchor flange included).

Mounting: Pole on mounting base (anchor flange included).

Electrical: Universal high efficiency electronic power supply, rated 50,000 hours, 120-277V.

Finish: White (RAL 9016) painted finish with a high level of weather and UV resistance. The semi-gloss finish coating is electrocoat applied. Suitable for use in outdoor areas at high temperatures for superior color relative finish.

Weight: 353 lbs (115 kg).

EPA: 11.6 ft² (1.08 m²).

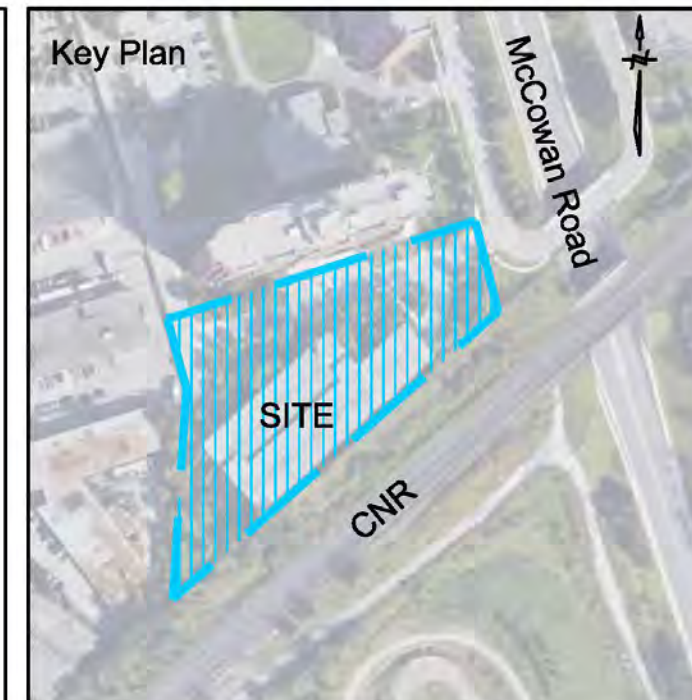
Warranty: 5 year limited warranty.

Certification: cULus listed for wet location.

Rating: IP65, IK08

©2021 STRUCTURA, INC. 125

4 Feature Lighting Albero by Guzzini Scale: N.T.S.



Legend

LIGHTING NOTE:
ALL EXTERIOR LIGHT FIXTURES WILL BE DARK SKY COMPLIANT AS PER TGS REQUIREMENTS.

LIGHTING NOTE:
REFER TO DRAWING L4a - GROUND FLOOR LIGHTING PLAN

LIGHTING NOTE:
REFER TO DRAWING L4a - GROUND FLOOR LIGHTING PLAN

LIGHTING NOTE:
REFER TO DRAWING L4a - GROUND FLOOR LIGHTING PLAN

LIGHTING NOTE:
REFER TO DRAWING L4a - GROUND FLOOR LIGHTING PLAN

LIGHTING NOTE:
REFER TO DRAWING L4a - GROUND FLOOR LIGHTING PLAN

LIGHTING NOTE:
REFER TO DRAWING L4a - GROUND FLOOR LIGHTING PLAN

LIGHTING NOTE:
REFER TO DRAWING L4a - GROUND FLOOR LIGHTING PLAN

LIGHTING NOTE:
REFER TO DRAWING L4a - GROUND FLOOR LIGHTING PLAN

LIGHTING NOTE:
REFER TO DRAWING L4a - GROUND FLOOR LIGHTING PLAN

LIGHTING NOTE:
REFER TO DRAWING L4a - GROUND FLOOR LIGHTING PLAN

LIGHTING NOTE:
REFER TO DRAWING L4a - GROUND FLOOR LIGHTING PLAN

LIGHTING NOTE:
REFER TO DRAWING L4a - GROUND FLOOR LIGHTING PLAN

LIGHTING NOTE:
REFER TO DRAWING L4a - GROUND FLOOR LIGHTING PLAN

LIGHTING NOTE:
REFER TO DRAWING L4a - GROUND FLOOR LIGHTING PLAN

LIGHTING NOTE:
REFER TO DRAWING L4a - GROUND FLOOR LIGHTING PLAN

LIGHTING NOTE:
REFER TO DRAWING L4a - GROUND FLOOR LIGHTING PLAN

LIGHTING NOTE:
REFER TO DRAWING L4a - GROUND FLOOR LIGHTING PLAN

LIGHTING NOTE:
REFER TO DRAWING L4a - GROUND FLOOR LIGHTING PLAN

LIGHTING NOTE:
REFER TO DRAWING L4a - GROUND FLOOR LIGHTING PLAN

LIGHTING NOTE:
REFER TO DRAWING L4a - GROUND FLOOR LIGHTING PLAN

| | | | |
|-----|------------|-------------------------------|----|
| No | Date | Revisions | By |
| 2.0 | 05-18-2023 | ISSUED FOR SPA SUBMISSION | GM |
| 1.0 | 07-09-2021 | ISSUED FOR SITE PLAN APPROVAL | GM |

This drawing is an instrument of service, is provided by and is the property of the MBTW Group. The contractor shall check and verify all dimensions and report all errors and omissions to the Landscape Architect whose seal is affixed to this drawing before proceeding with the work. This drawing is not to be scaled.



Blauson Assets Management Ltd.
c/o Ling Kee Group

the mbtw group
255 Wilsdale Ave., Unit 14 | Toronto, Ontario, Canada M6L 1S6
T: (416) 443-7767 | F: (416) 443-1883 | www.mbtw.com

Project Name:
320 McCowan Road

City of Toronto

Sheet Title:
Ground Floor Lighting Details

Designed: GGM
Drawn: CS
Scale: N/A
Drawing No.: L4-b

Date of Drawing: June 25, 2021
Job No.: BAM001