

All Drawings, Specifications, and Related Documents are the Copyright of the Architect. The Architect retains all rights to control all uses of these documents for the intended issuance/use as identified below. Reproduction of these Documents, without permission from the Architect, is strictly prohibited. The Authorities Having Jurisdiction are permitted to use, distribute, and reproduce these drawings for the intended issuance as noted and dated below, however the extended permission to the Authorities Having Jurisdiction in no way debases or limits the Copyright of the Architect, or control of use of these documents by the Architect.

Do not scale the drawings.  
This Drawing is Not To Be Used For Construction Until Signed By The Architect.

Date:

**KIRKOR**  
ARCHITECTS AND PLANNERS

20 De Boers Drive Suite 400  
Toronto, ON M3J 0H1

Revisions:		
No.:	Revision:	Date:

2	Issued For Site Plan Approval	Nov. 30, 2021
1	Issued For Rezoning	Sept. 30, 2021

No.:	Issued For:	Date:
------	-------------	-------



**CHESTNUT HILL**  
DEVELOPMENTS

Client:

**Chestnut Hill Developments**

**The Dylan 2**

543 Marlee Ave and 805, 807, 811 & 813  
Glencairn Ave, Toronto, ON  
Proposed Residential Development

Drawing Title:  
**3D Massing**

Scale:

Drawn by:  
**Author**  
Checked by:  
**Checker**  
Project No.:  
**20-011**  
Date:  
**July 17, 2023**

Drawing No.:

**dA0.1**

All Drawings, Specifications, and Related Documents are the Copyright of the Architect. The Architect retains all rights to control all uses of these documents for the intended issuance/use as identified below. Reproduction of these Documents, without permission from the Architect, is strictly prohibited. The Authorities Having Jurisdiction are permitted to use, distribute, and reproduce these drawings for the intended issuance as noted and dated below, however the extended permission to the Authorities Having Jurisdiction in no way debases or limits the Copyright of the Architect, or control of use of these documents by the Architect.

Do not scale the drawings.  
 This Drawing is Not To Be Used For Construction Until Signed By The Architect.  
 Date:

# KIRKOR

ARCHITECTS AND PLANNERS

20 De Boers Drive Suite 400  
 Toronto, ON M3J 0H1

Revisions:		
No.:	Revision:	Date:

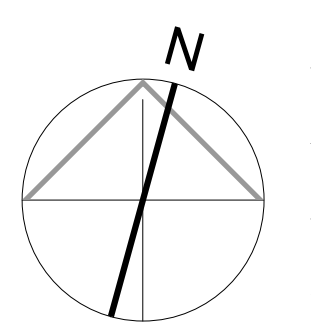
2	Issued For Site Plan Approval	Nov. 30, 2021
1	Issued For Rezoning	Sept. 30, 2021
No.:	Issued For:	Date:



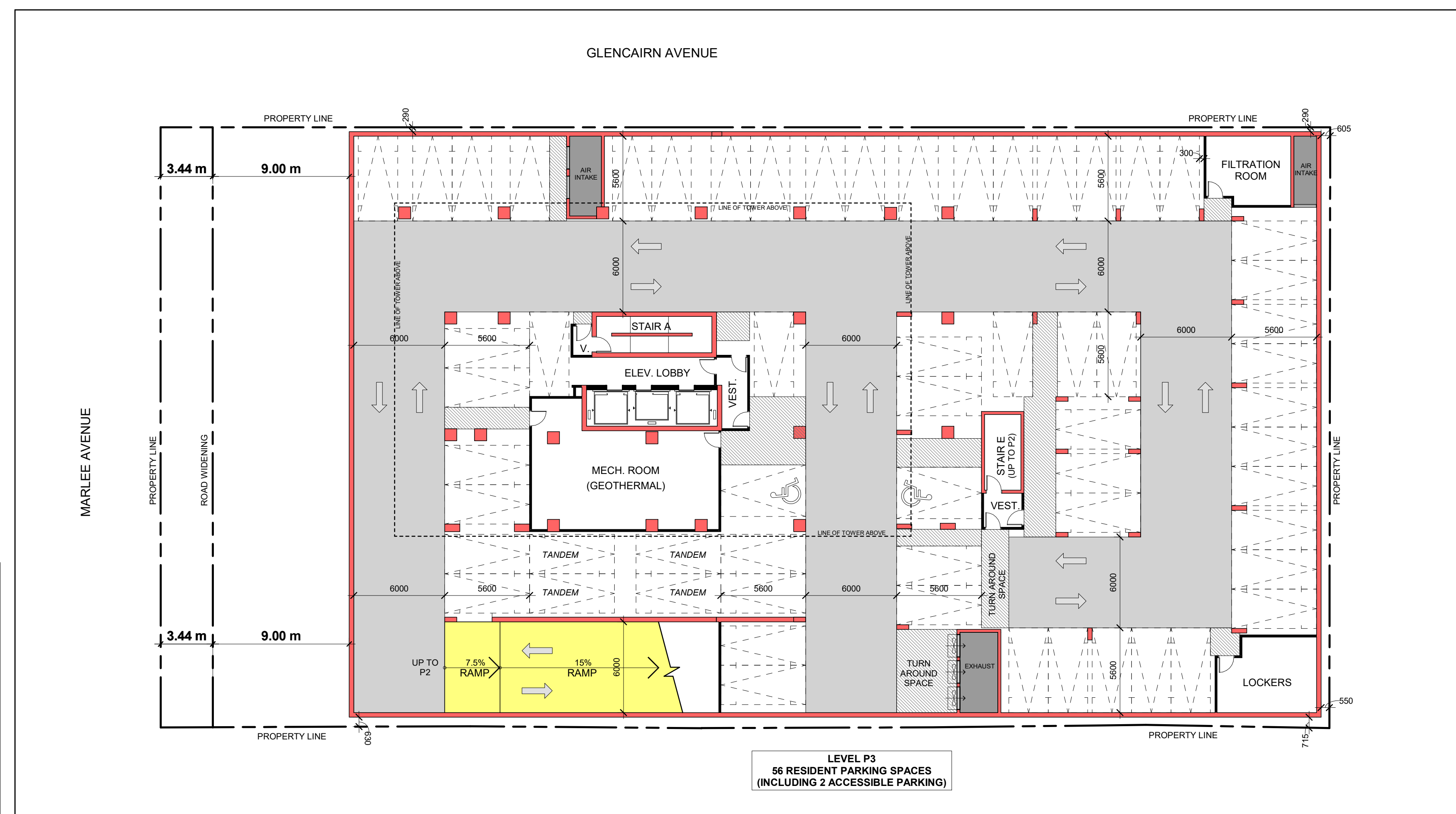
Client:  
**Chestnut Hill Developments**  
**The Dylan 2**  
 543 Marlee Ave and 805, 807, 811 & 813  
 Glencairn Ave, Toronto, ON  
 Proposed Residential Development

## Parking Levels P3 Floor Plan

Scale:  
 1 : 200  
 Drawn by:  
 HM  
 Checked by:  
 CK  
 Project No.:  
 20-011  
 Date:  
 July 20, 2023  
 Drawing No.:



# dA2.1



**LEVEL P3**  
**56 RESIDENT PARKING SPACES**  
**(INCLUDING 2 ACCESSIBLE PARKING)**

Note:  
 20% of the indoor parking spaces require EV charging units with the remainder of spaces to be roughed-in for future EV charging as per TGS ver.3 Tier 1, AQ 1.3

**Parking Legend:**

- Parking with EVSE (Electric Vehicle Supply Equipment)
- LEV (Low-Emitting Vehicle) Parking
- Visitor Parking

**Parking Note 3**  
 NTS dA2.1

**Parking Level P3 - Floor Plan 1**  
 1 : 200 dA2.1

All Drawings, Specifications, and Related Documents are the Copyright of the Architect. The Architect retains all rights to control all uses of these documents for the intended issuance/use as identified below. Reproduction of these Documents, without permission from the Architect, is strictly prohibited. The Authorities Having Jurisdiction are permitted to use, distribute, and reproduce these drawings for the intended issuance as noted and dated below, however the extended permission to the Authorities Having Jurisdiction in no way debases or limits the Copyright of the Architect, or control of use of these documents by the Architect.

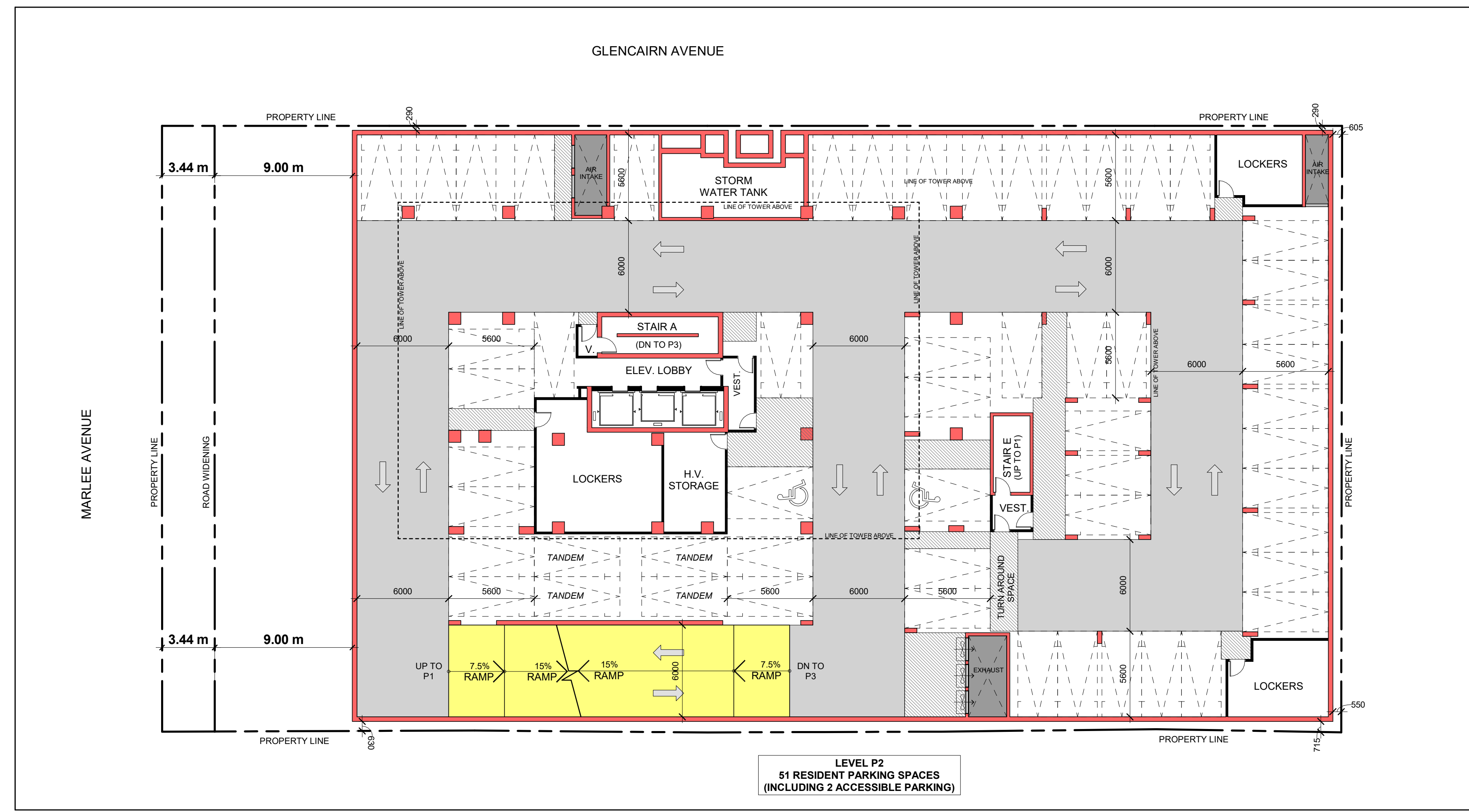
Do not scale the drawings.  
This Drawing is Not To Be Used For Construction Until Signed By The Architect.

Date:

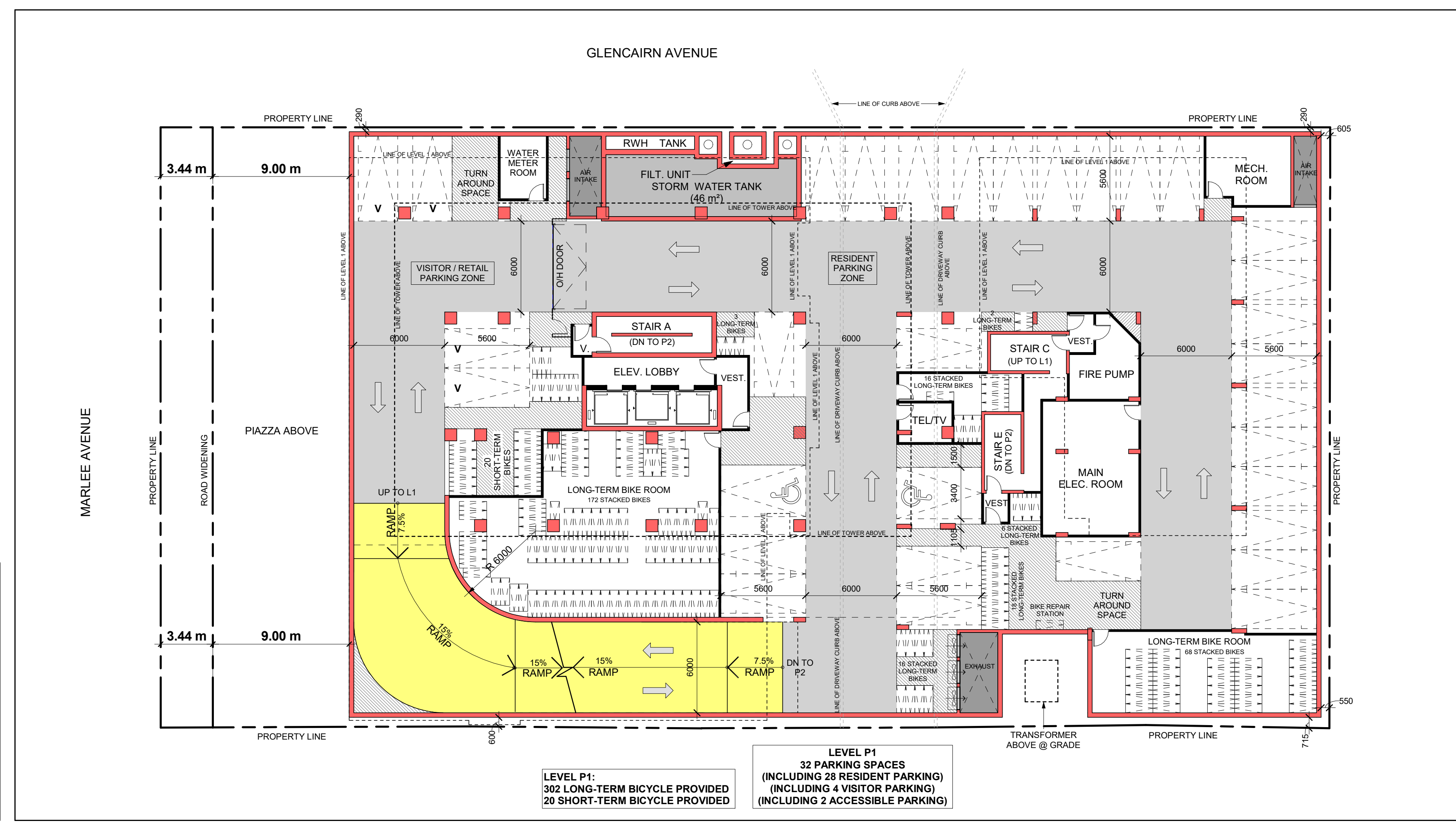


20 De Boers Drive Suite 400  
Toronto, ON M3J 0H1

Revisions:		Date:
No.:	Revision:	Date:



Parking Level P2 - Floor Plan **2**  
1 : 200 dA2.2



Parking Level P1 - Floor Plan **1**  
1 : 200 dA2.2

**Note:**  
20% of the indoor parking spaces require EV charging units with the remainder of spaces to be roughed-in for future EV charging as per TGS ver.3 Tier 1, AQ 1.3

**Parking Legend:**

- Parking with EVSE (Electric Vehicle Supply Equipment)
- LEV (Low-Emitting Vehicle) Parking
- Visitor Parking

Parking Note **3**  
NTS dA2.2

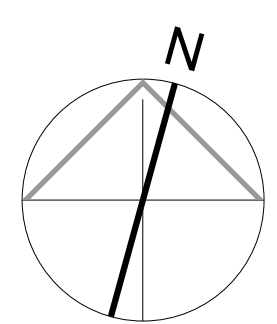
2	Issued For Site Plan Approval	Nov. 30, 2021
1	Issued For Rezoning	Sept. 30, 2021
No.:	Issued For:	Date:



Client:  
**Chestnut Hill Developments**  
**The Dylan 2**  
543 Marlee Ave and 805, 807, 811 & 813  
Glencairn Ave, Toronto, ON  
Proposed Residential Development

Drawing Title:  
**Parking Levels P1 & P2  
Floor Plans**

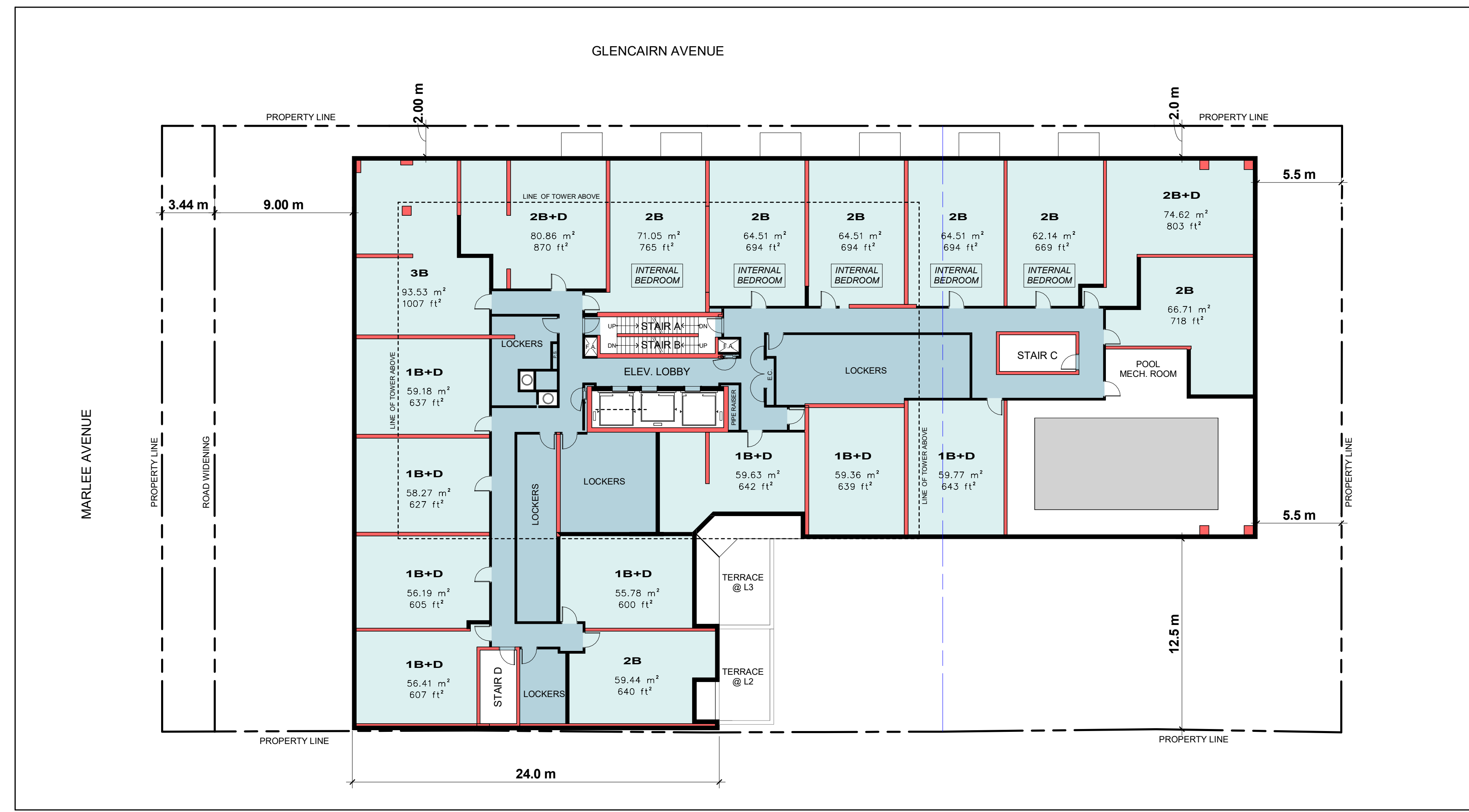
Scale:  
**1 : 200**  
Drawn by:  
**HM**  
Checked by:  
**CK**  
Project No.:  
**20-011**  
Date:  
**July 20, 2023**  
Drawing No.:



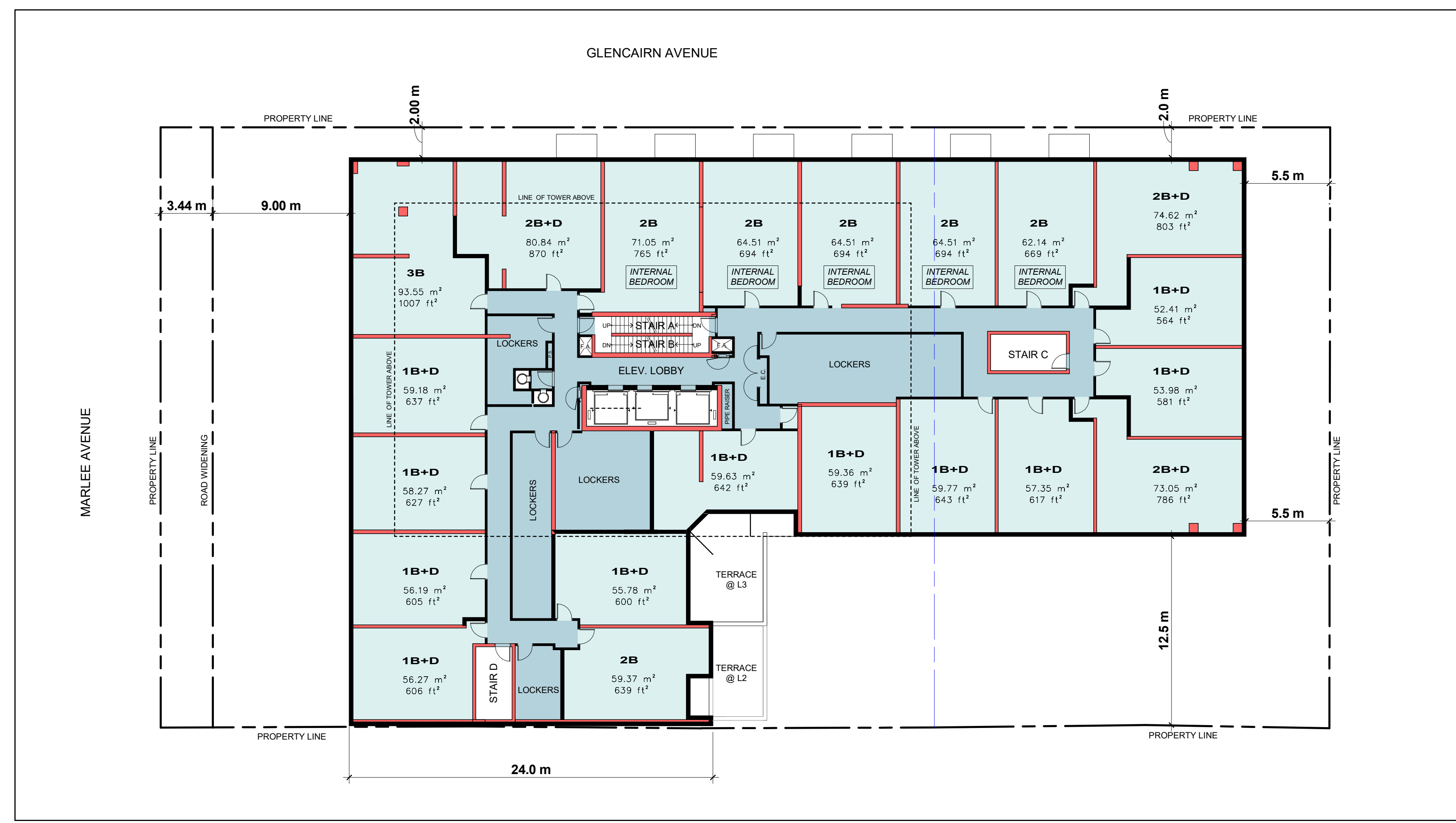
**dA2.2**

Plot Date: 7/20/2023 11:43:57 AM File Path: C:\Users\20231\Documents\2023\20-011\_The Dylan 2\_P1\_P2.dwg 20-011.dwg





Level 4 Floor Plan **2**  
1 : 200 dA2.4



Level 3 Floor Plan **1**  
1 : 200 dA2.4

All Drawings, Specifications, and Related Documents are the Copyright of the Architect. The Architect retains all rights to control all uses of these documents for the intended issuance/use as identified below. Reproduction of these Documents, without permission from the Architect, is strictly prohibited. The Authorities Having Jurisdiction are permitted to use, distribute, and reproduce these drawings for the intended issuance as noted and dated below, however the extended permission to the Authorities Having Jurisdiction in no way debases or limits the Copyright of the Architect, or control of use of these documents by the Architect.

Do not scale the drawings.  
This Drawing is Not To Be Used For Construction Until Signed By The Architect.

Date:



20 De Boers Drive Suite 400  
Toronto, ON M3J 0H1

Revisions:		
No.:	Revision:	Date:

2	Issued For Site Plan Approval	Nov. 30, 2021
1	Issued For Rezoning	Sept. 30, 2021
No.:	Issued For:	Date:



**CHESTNUT HILL DEVELOPMENTS**

Client:  
Chestnut Hill Developments

**The Dylan 2**

543 Marlee Ave and 805, 807, 811 & 813  
Glencairn Ave, Toronto, ON  
Proposed Residential Development

Drawing Title:  
**Levels 3 & 4 Floor Plans**

Scale:

1 : 200

Drawn by:

HM

Checked by:

CK

Project No.:

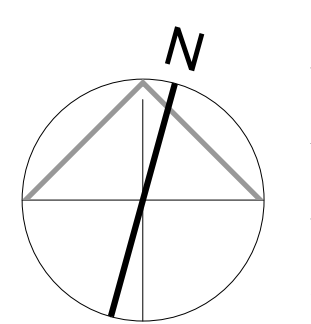
20-011

Date:

July 20, 2023

Drawing No.:

**dA2.4**



All Drawings, Specifications, and Related Documents are the Copyright of the Architect. The Architect retains all rights to control all uses of these documents for the intended issuance/use as identified below. Reproduction of these Documents, without permission from the Architect, is strictly prohibited. The Authorities Having Jurisdiction are permitted to use, distribute, and reproduce these drawings for the intended issuance as noted and dated below, however the extended permission to the Authorities Having Jurisdiction in no way debases or limits the Copyright of the Architect, or control of use of these documents by the Architect.

Do not scale the drawings.  
This Drawing is Not To Be Used For Construction Until Signed By The Architect.

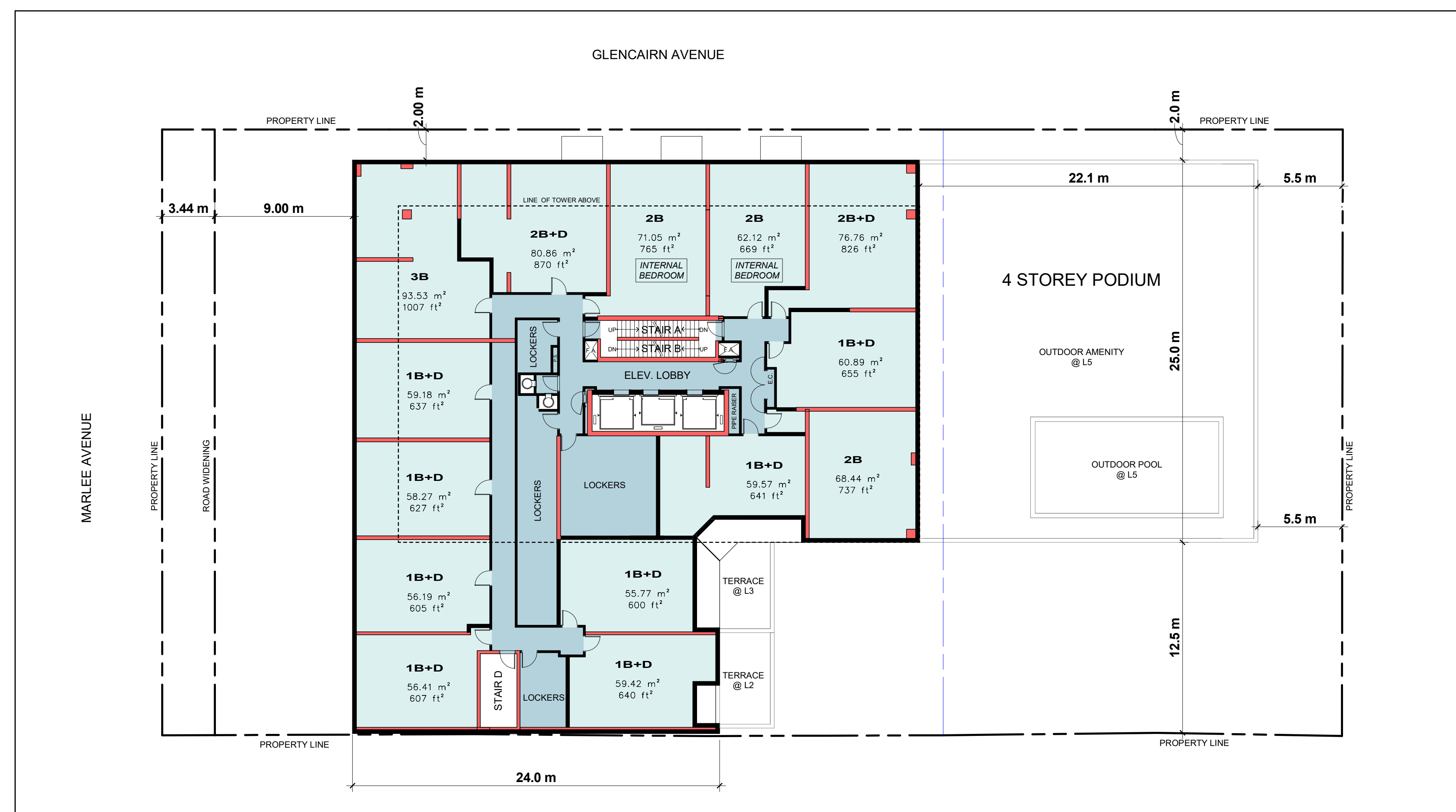
Date:



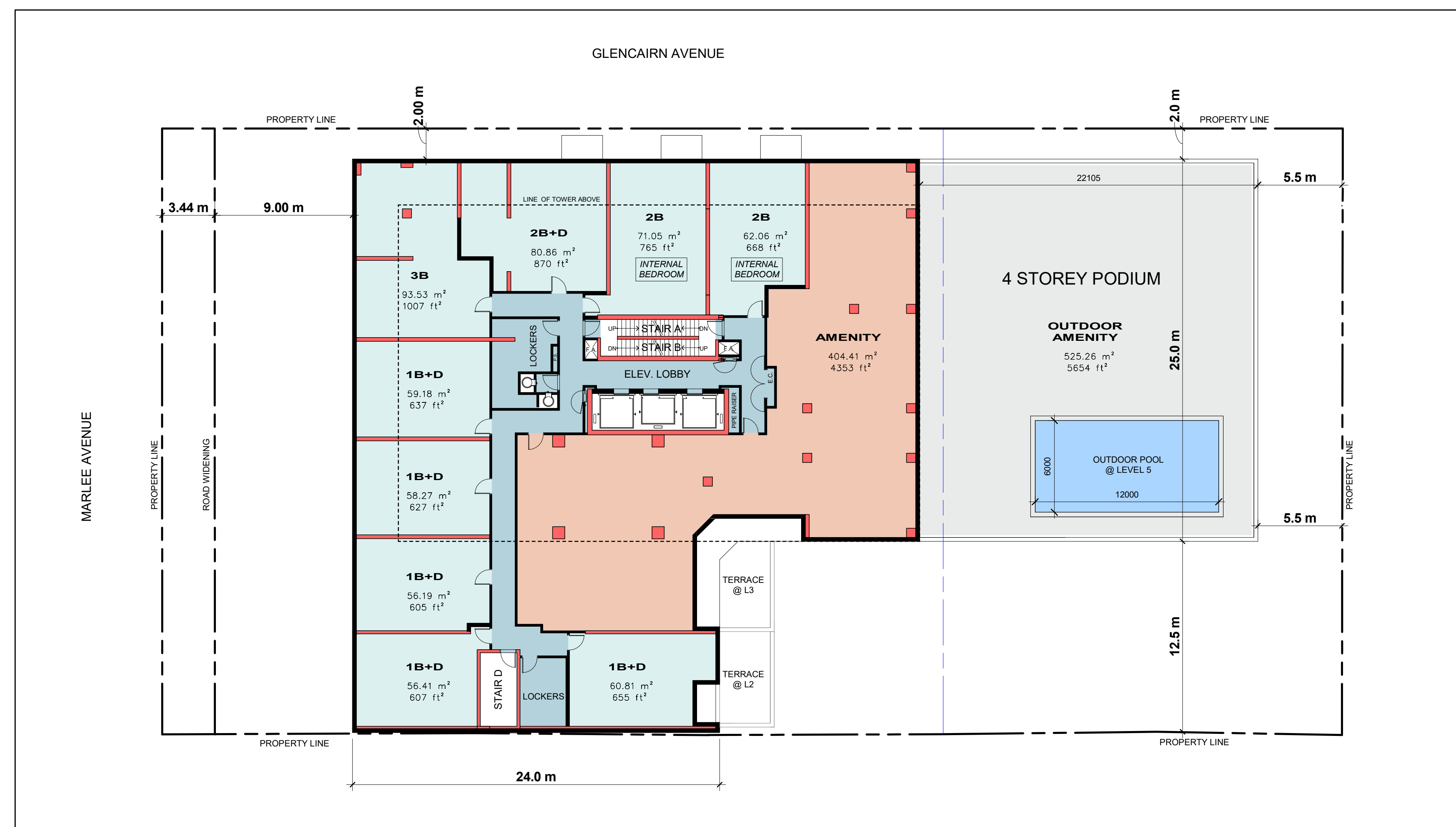
20 De Boers Drive Suite 400  
Toronto, ON M3J 0H1

Revisions:

No.:	Revision:	Date:



Level 6 Floor Plan 2  
1 : 200 dA2.5



Level 5 Floor Plan 1  
1 : 200 dA2.5

2	Issued For Site Plan Approval	Nov. 30, 2021
1	Issued For Rezoning	Sept. 30, 2021

No.: Issued For: Date:



Client:

Chestnut Hill Developments

The Dylan 2

543 Marlee Ave and 805, 807, 811 & 813  
Glencairn Ave, Toronto, ON  
Proposed Residential Development

Drawing Title:

Levels 5 & 6 Floor Plans

Scale:

1 : 200

Drawn by:

HM

Checked by:

CK

Project No.:

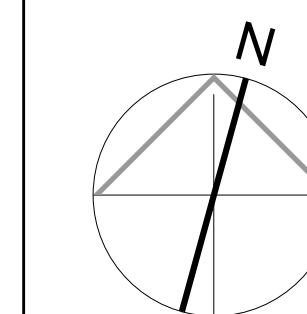
20-011

Date:

July 20, 2023

Drawing No.:

dA2.5



All Drawings, Specifications, and Related Documents are the Copyright of the Architect. The Architect retains all rights to control all uses of these documents for the intended issuance/use as identified below. Reproduction of these Documents, without permission from the Architect, is strictly prohibited. The Authorities Having Jurisdiction are permitted to use, distribute, and reproduce these drawings for the intended issuance as noted and dated below, however the extended permission to the Authorities Having Jurisdiction in no way debases or limits the Copyright of the Architect, or control of use of these documents by the Architect.

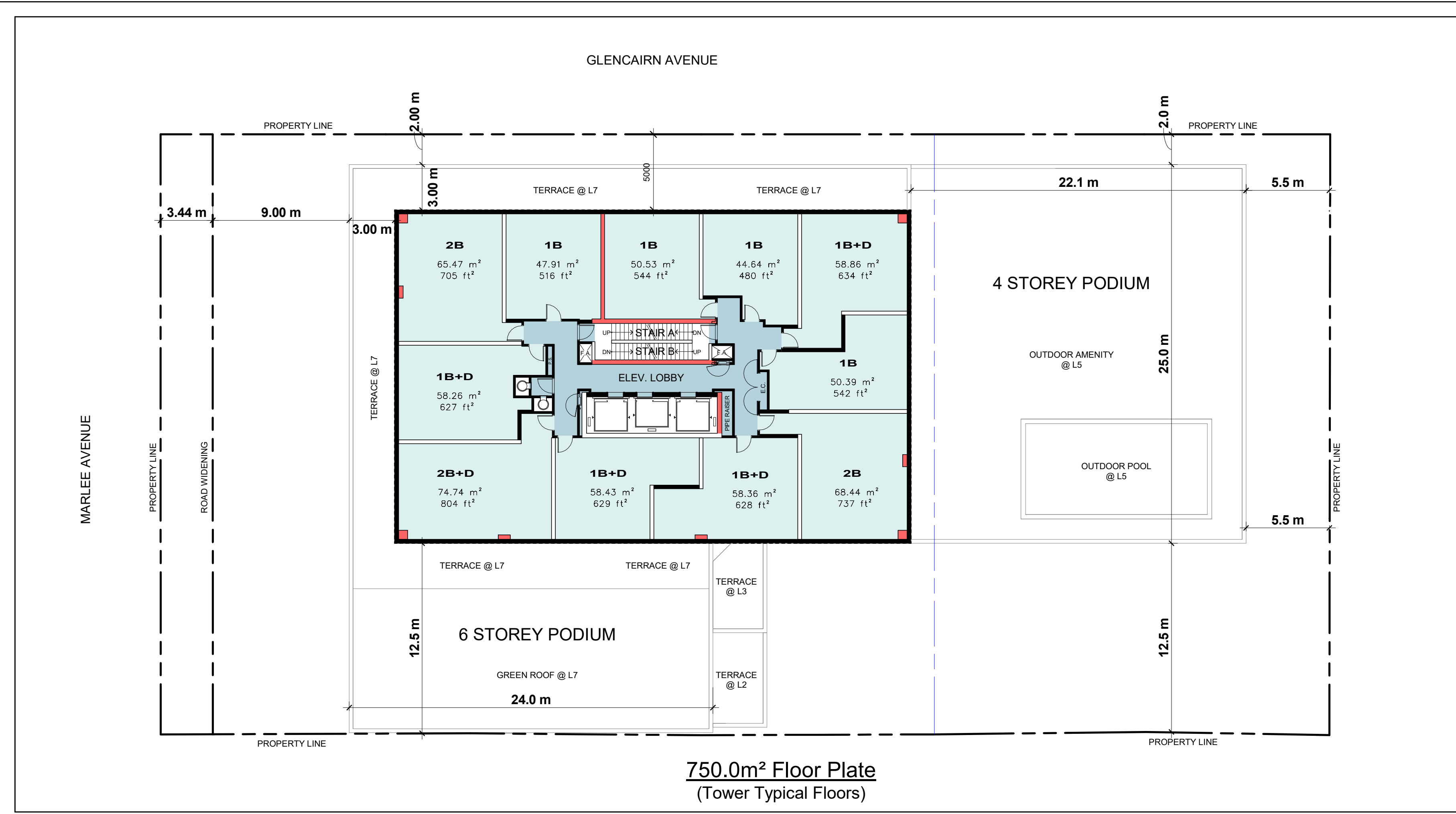
Do not scale the drawings.  
This Drawing is Not To Be Used For Construction Until Signed By The Architect.

Date:



20 De Boers Drive Suite 400  
Toronto, ON M3J 0H1

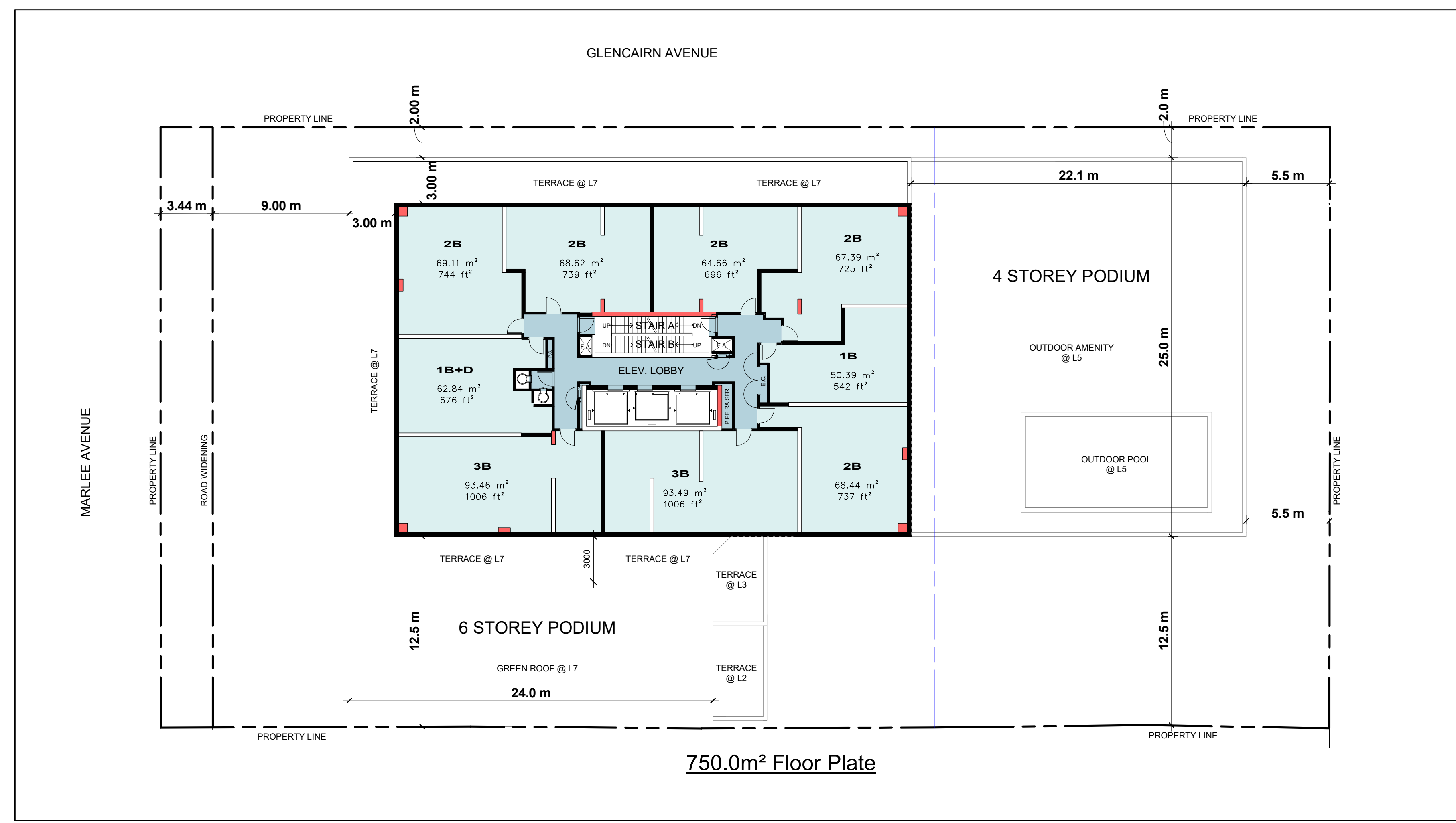
Revisions:		
No.:	Revision:	Date:



Level 8-25 Floor Plan

2  
dA2.6

1 : 200



Level 7 Floor Plan

1  
dA2.6

1 : 200

2	Issued For Site Plan Approval	Nov. 30, 2021
1	Issued For Rezoning	Sept. 30, 2021
No.:	Issued For:	Date:



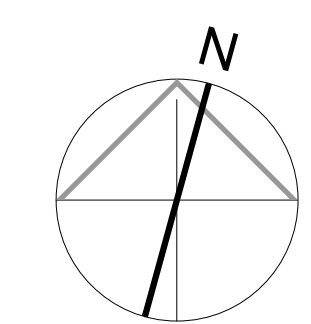
Client:  
Chestnut Hill Developments

**The Dylan 2**

543 Marlee Ave and 805, 807, 811 & 813  
Glencairn Ave, Toronto, ON  
Proposed Residential Development

Drawing Title:  
**Levels 7 & 8-25 Floor Plans**

Scale:  
1 : 200  
Drawn by:  
HM  
Checked by:  
CK  
Project No.:  
20-011  
Date:  
July 20, 2023  
Drawing No.:



**dA2.6**

Plot Date: 7/20/2023 11:52 AM File Path: C:\Users\20231\Documents\2023\2023-07-20\2023\_SitePlan\TheDylan2.dwg

All Drawings, Specifications, and Related Documents are the Copyright of the Architect. The Architect retains all rights to control all uses of these documents for the intended issuance/use as identified below. Reproduction of these Documents, without permission from the Architect, is strictly prohibited. The Authorities Having Jurisdiction are permitted to use, distribute, and reproduce these drawings for the intended issuance as noted and dated below, however the extended permission to the Authorities Having Jurisdiction in no way debases or limits the Copyright of the Architect, or control of use of these documents by the Architect.

Do not scale the drawings.  
This Drawing is Not To Be Used For Construction Until Signed By The Architect.

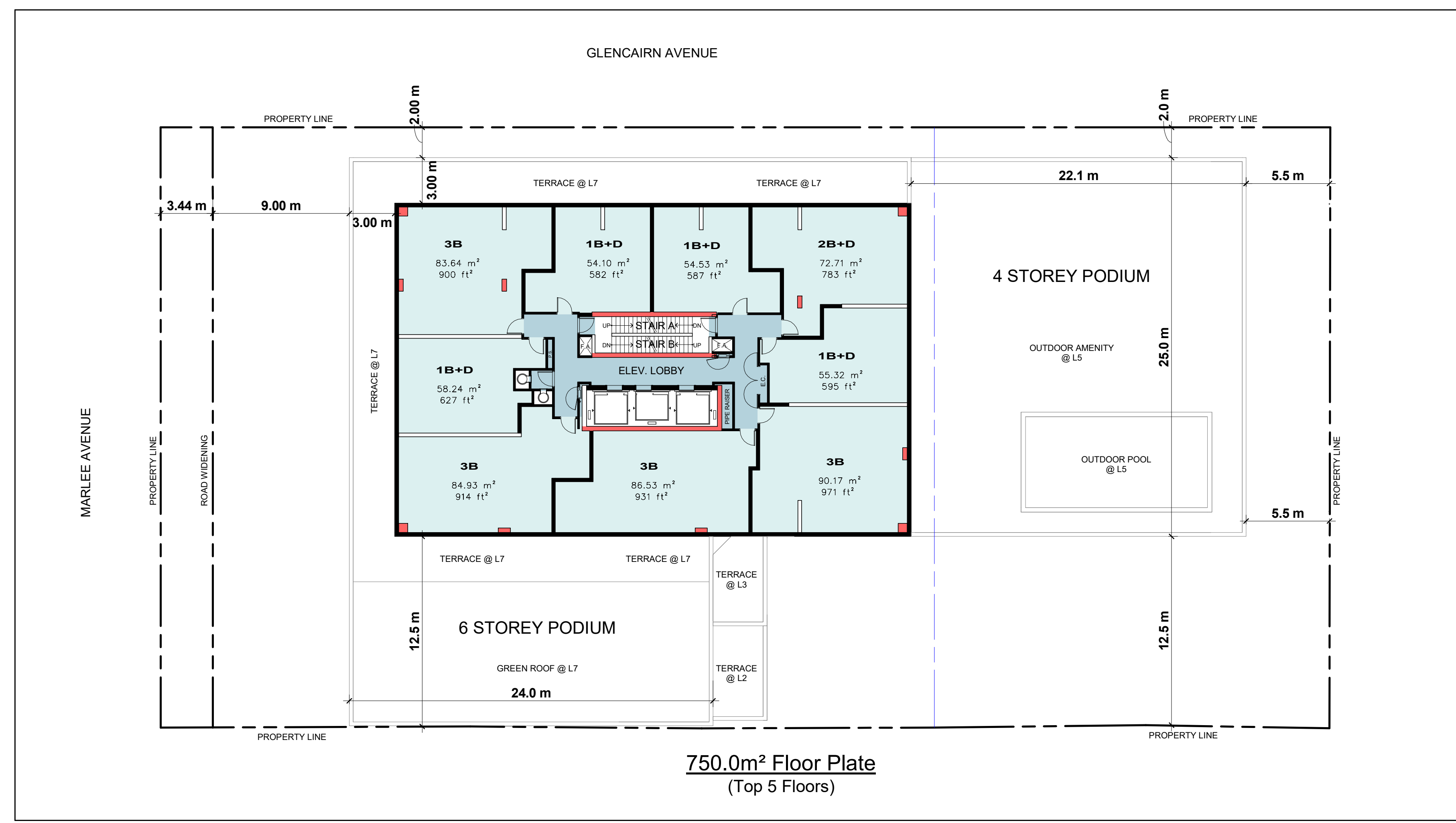
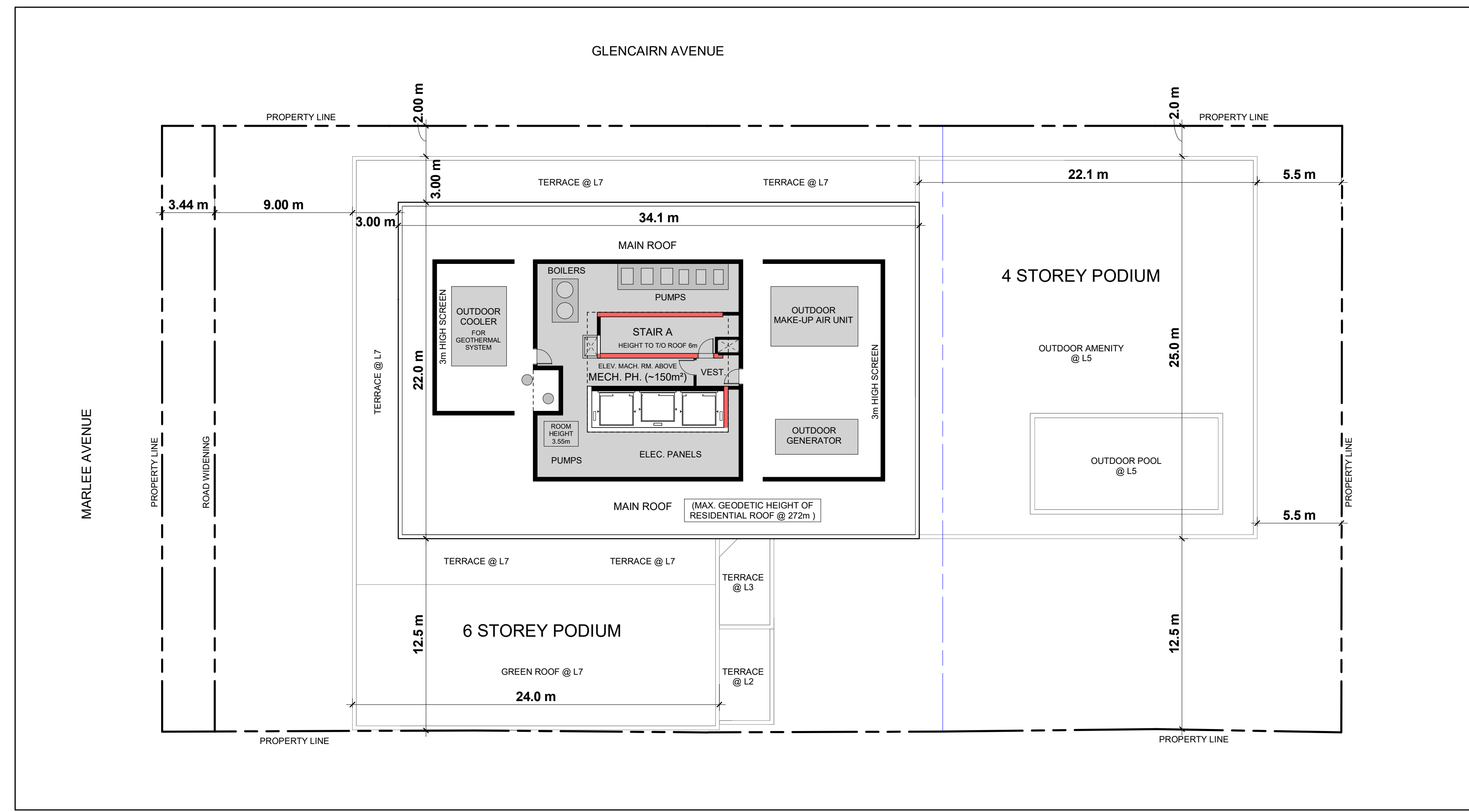
Date:



20 De Boers Drive Suite 400  
Toronto, ON M3J 0H1

Revisions:

No.:	Revision:	Date:
------	-----------	-------



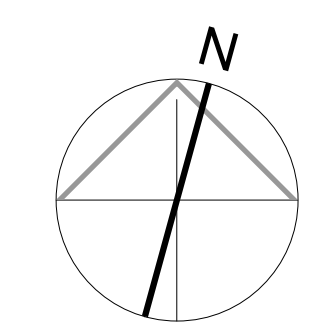
2	Issued For Site Plan Approval	Nov. 30, 2021
1	Issued For Rezoning	Sept. 30, 2021
No.:	Issued For:	Date:



Client:  
**Chestnut Hill Developments**  
**The Dylan 2**  
543 Marlee Ave and 805, 807, 811 & 813  
Glencairn Ave, Toronto, ON  
Proposed Residential Development

Drawing Title:  
**Levels 26-30 & MPH Floor Plans**

Scale:  
1 : 200  
Drawn by:  
Author  
Checked by:  
Checker  
Project No.:  
20-011  
Date:  
July 20, 2023  
Drawing No.:



**dA2.7**

Plot Date: 9/7/2023 12:07 PM File Path: C:\Users\20231\Documents\2023\20-011\20-011.dwg 20-011.dwg