

- ### EXTERIOR FINISH LEGEND
- 15067-1 RICHVIEW - BUILDING C
- EXTERIOR CLADDING
- 1 STONE VENEER  
BRAMPTON BRICK,  
COLOUR: SILHOUETTE: SUAVE
  - 2 FORMED CONCRETE WITH INTEGRAL COLOUR  
MATCH: BRAMPTON BRICK, SILHOUETTE: SUAVE
  - 3 PRECAST CLADDING,  
MATCH: BRAMPTON BRICK, ICELAND WHITE: SUAVE
- GLAZING
- 4 PREFINISHED WINDOW WALL SYSTEM - VISION  
GLASS: VISION PANEL
  - 5 PREFINISHED WINDOW WALL SYSTEM - SPANDREL GLASS  
SPANDREL COLOR: DARK GRAY
  - 6 PREFINISHED WINDOW WALL SYSTEM - ALUMINUM PANEL  
PANEL COLOR: GRAY
  - 7 CURTAIN WALL SYSTEM - VISION  
GLASS: VISION PANEL
  - 8 CURTAIN WALL SYSTEM - GLASS SPANDREL  
SPANDREL COLOUR: DARK GRAY
  - 9 CURTAIN WALL SYSTEM - GLASS SPANDREL  
SPANDREL COLOUR: LIGHT GRAY
- CANOPIES
- C1 PRE-FINISHED ALUMINUM CANOPY WITH RECESSED  
SOFFIT LIGHTING  
DURANAR Charcoal Gray UC54271
- RAILING
- R1 PRE-FINISHED ALUMINUM RAILING  
PANEL: TINTED GLASS
  - R2 PRE-FINISHED ALUMINUM RAILING  
PANEL: CLEAR GLASS
- DOORS
- D1 MAIN ENTRANCE GLAZED DOUBLE DOOR
  - D2 EXIT DOOR
  - D3 STEEL ROLL-UP DOOR,  
PAINTED TO MATCH ADJACENT FINISH

EXTERIOR FINISH LEGEND 2  
NTS dA4.1

### Bird-Friendly Design Statistics

	Elevation First 15m* Above Grade					Total (%)
	North	South	East	West	Total (m <sup>2</sup> )	
Glazing Area (m <sup>2</sup> )	539.63	828.00	238.61	165.14	1751.38	100%
Untreated Area (m <sup>2</sup> )	80.47	234.20	32.79	20.13	357.59	15%
Treated Area (m <sup>2</sup> )	461.96	707.17	187.62	139.86	1496.63	85%
Low-Reflectance	89.78	410.85	101.49	34.11	636.23	36%
Opaque Glass (m <sup>2</sup> )						
Visual Markers (m <sup>2</sup> )	372.18	296.32	86.13	105.77	860.40	49%
Shaded (m <sup>2</sup> )						0

\*For Site Plan Approval applications received before January 1, 2020, treat the first 12m above grade.

	Elevation First 4m Above Roofline Vegetation*					Total (%)
	North (Floor #)	South (Floor #)	East (Floor #)	West (Floor #)	Total (m <sup>2</sup> )	
Glazing Area (m <sup>2</sup> )					0	0
Untreated Area (m <sup>2</sup> )					0	0
Treated Area (m <sup>2</sup> )					0	0
Low-Reflectance					0	0
Opaque Glass (m <sup>2</sup> )					0	0
Visual Markers (m <sup>2</sup> )					0	0
Shaded (m <sup>2</sup> )					0	0

\*Include this section only when applicable and provide relevant floor numbers for reference.

Building Window : Wall Ratio

Bird Friendly Statistics 3  
NTS dA4.1

All Drawings, Specifications, and Related Documents are the Copyright of the Architect. The Architect retains all rights to control all uses of these documents for the intended issuance/use as identified below. Reproduction of these Documents, without permission from the Architect, is strictly prohibited. The Authorities Having Jurisdiction are permitted to use, distribute, and reproduce these drawings for the intended issuance as noted and dated below, however the extended permission to the Authorities Having Jurisdiction in no way debases or limits the Copyright of the Architect, or control of use of these documents by the Architect.

Do not scale the drawings.  
This Drawing is Not To Be Used For Construction Until Signed By The Architect.

Date:



20 De Boers Drive Suite 400  
Toronto, ON M3J 0H1

Revisions:  
No.: Revision: Date:

No.	Revision:	Date:
7.	Re-Zoning Re-submission	Feb 13, 2023
6.	Re-Zoning Re-submission	Feb 10, 2023
5.	Re-Zoning Re-submission	Feb 08, 2023
4.	Re-Zoning Re-submission	Feb 03, 2023
3.	Re-Zoning Re-submission	Dec 22, 2020
2.	Re-Zoning Re-submission	Oct 07, 2020
1.	Re-Zoning	Dec 14, 2018

Client:  
**HR Developments | Fieldgate**

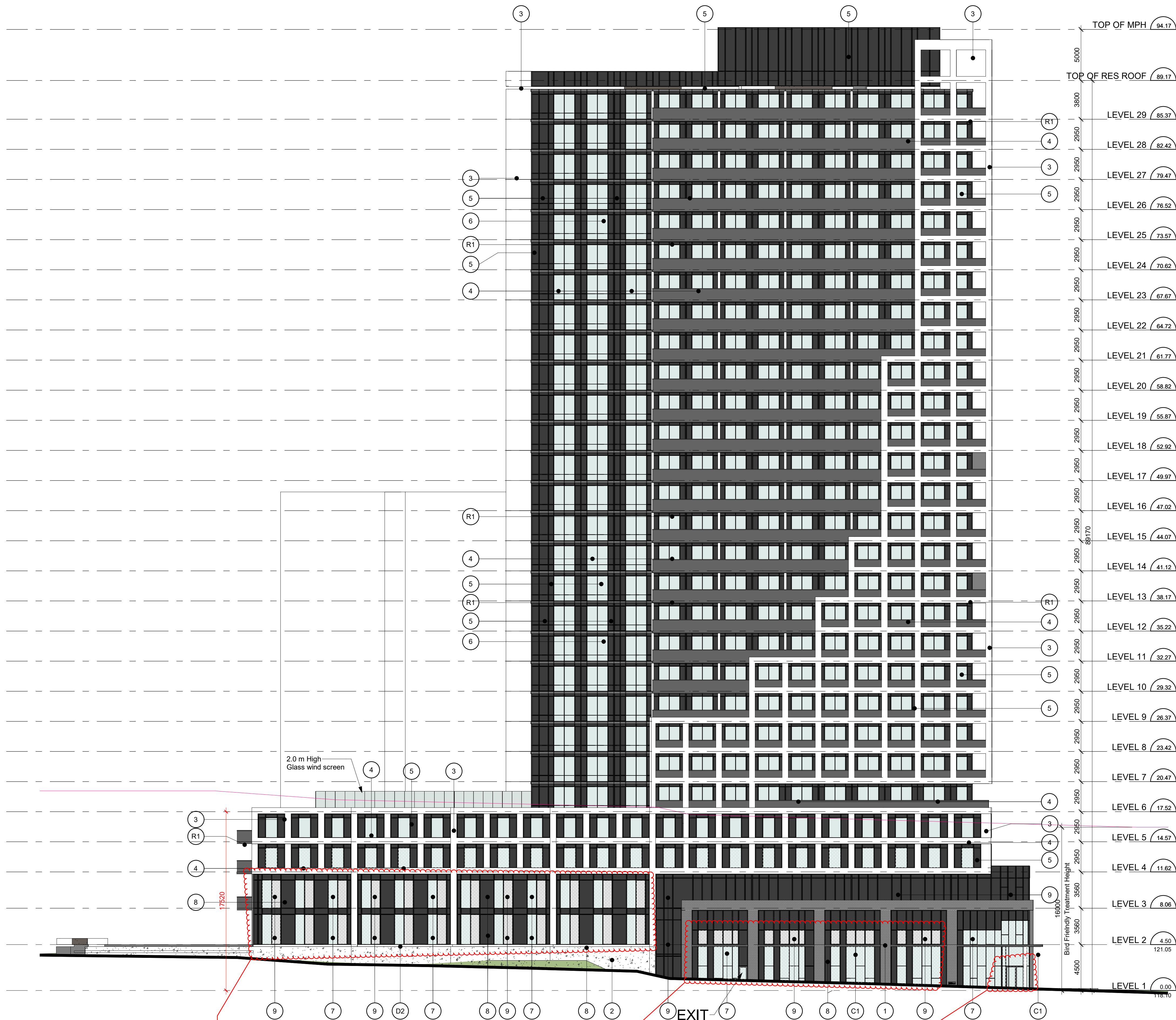
**Betovan Construction Ltd.**  
Proposed Residential Development

Drawing Title:  
**Elevations - North**

Scale:  
**1 : 200**  
Drawn by:  
**Author**  
Checked by:  
**Checker**  
Project No.:  
**15-067**  
Date:  
**Oct 13, 2023**  
Drawing No.:

**dA4.1**

NORTH ELEVATION 1  
Scale: 1 : 200 dA4.1



More Vision Glazing on the south elevation

More Vision Glazing on the south elevation

Entrance to the south of the vestibule/lobby added

SOUTH (EGLINTON AVE) ELEVATION

Scale: 1 : 200

**EXTERIOR FINISH LEGEND**

15067-1 RICHVIEW - BUILDING C

**EXTERIOR CLADDING**

- 1 STONE VENEER  
BRAMPTON BRICK,  
COLOUR: SILHOUETTE: SUAVE
- 2 FORMED CONCRETE WITH INTEGRAL COLOUR  
MATCH: BRAMPTON BRICK, SILHOUETTE: SUAVE
- 3 PRECAST CLADDING,  
MATCH: BRAMPTON BRICK, ICELAND WHITE: SUAVE

**GLAZING**

- 4 PREFINISHED WINDOW WALL SYSTEM - VISION  
GLASS: VISION PANEL
- 5 PREFINISHED WINDOW WALL SYSTEM - SPANDREL GLASS  
SPANDREL COLOR: DARK GRAY
- 6 PREFINISHED WINDOW WALL SYSTEM - ALUMINUM PANEL  
PANEL COLOR: GRAY
- 7 CURTAIN WALL SYSTEM - VISION  
GLASS: VISION PANEL
- 8 CURTAIN WALL SYSTEM - GLASS SPANDREL  
SPANDREL COLOUR: DARK GRAY
- 9 CURTAIN WALL SYSTEM - GLASS SPANDREL  
SPANDREL COLOUR: LIGHT GRAY

**CANOPIES**

- C1 PRE-FINISHED ALUMINUM CANOPY WITH RECESSED  
SOFFIT LIGHTING  
DURANAR Charcoal Gray UC54271

**RAILING**

- R1 PRE-FINISHED ALUMINUM RAILING  
PANEL: TINTED GLASS
- R2 PRE-FINISHED ALUMINUM RAILING  
PANEL: CLEAR GLASS

**DOORS**

- D1 MAIN ENTRANCE GLAZED DOUBLE DOOR
- D2 EXIT DOOR
- D3 STEEL ROLL-UP DOOR,  
PAINTED TO MATCH ADJACENT FINISH

**EXTERIOR FINISH LEGEND**

NTS dA4.2

**Bird-Friendly Design Statistics**

	Elevation First 16m* Above Grade					Total (%)
	North	South	East	West	Total (m2)	
Glazing Area (m <sup>2</sup> )	539.63	828.00	218.61	165.16	1751.38	300%
Untreated Area (m <sup>2</sup> )	80.47	124.20	32.79	20.13	257.58	15%
Treated Area (m <sup>2</sup> )	461.96	707.17	187.62	139.88	1496.63	85%
Low-Reflectance Opaque Glass (m <sup>2</sup> )	89.78	410.85	101.49	34.11	636.23	36%
Visual Markers (m <sup>2</sup> )	172.18	296.32	86.13	105.77	660.40	49%
Shaded (m <sup>2</sup> )					0	0%

	Elevation First 4m Above Rooftop Vegetation*					Total (%)
	North (Floor #)	South (Floor #)	East (Floor #)	West (Floor #)	Total (m2)	
Glazing Area (m <sup>2</sup> )					0	0%
Untreated Area (m <sup>2</sup> )					0	0%
Treated Area (m <sup>2</sup> )					0	0%
Low-Reflectance Opaque Glass (m <sup>2</sup> )					0	0%
Visual Markers (m <sup>2</sup> )					0	0%
Shaded (m <sup>2</sup> )					0	0%

\* Includes this section only when applicable and provide relevant floor numbers for reference.

Refer to the Toronto Green Standard Version 3 Ecology section for details on bird collision deterrence treatment options.

**Bird Friendly Statistics**

NTS dA4.2

All Drawings, Specifications, and Related Documents are the Copyright of the Architect. The Architect retains all rights to control all uses of these documents for the intended issuance/use as identified below. Reproduction of these Documents, without permission from the Architect, is strictly prohibited. The Authorities Having Jurisdiction are permitted to use, distribute, and reproduce these drawings for the intended issuance as noted and dated below, however the extended permission to the Authorities Having Jurisdiction in no way debases or limits the Copyright of the Architect, or control of use of these documents by the Architect.

Do not scale the drawings.  
This Drawing is Not To Be Used For Construction Until Signed By The Architect.

Date:



20 De Boers Drive Suite 400  
Toronto, ON M3J 0H1

No.	Revision	Date

DRAFT

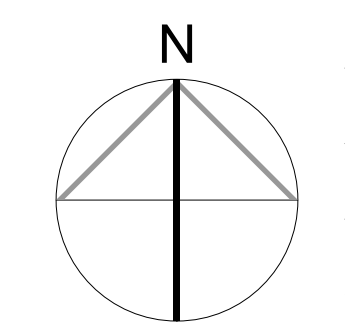
No.	Issued For:	Date:
7.	Re-Zoning Re-submission	Feb 13, 2023
6.	Re-Zoning Re-submission	Feb 10, 2023
5.	Re-Zoning Re-submission	Feb 08, 2023
4.	Re-Zoning Re-submission	Feb 03, 2023
3.	Re-Zoning Re-submission	Dec 22, 2020
2.	Re-Zoning Re-submission	Oct 07, 2020
1.	Re-Zoning	Dec 14, 2018

Client:  
**HR Developments | Fieldgate**

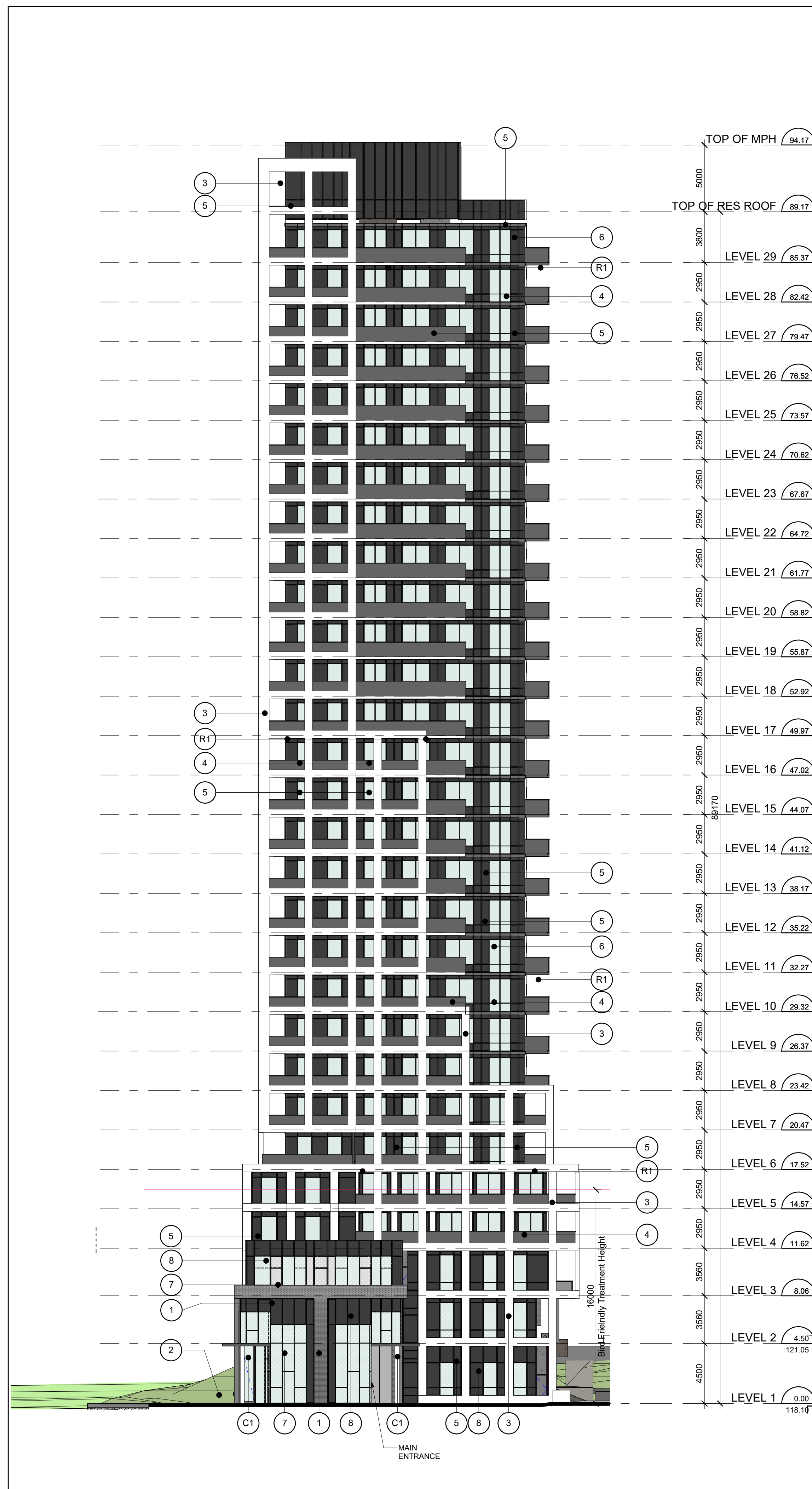
**Betovan Construction Ltd.**  
Proposed Residential Development

**Elevations - South**

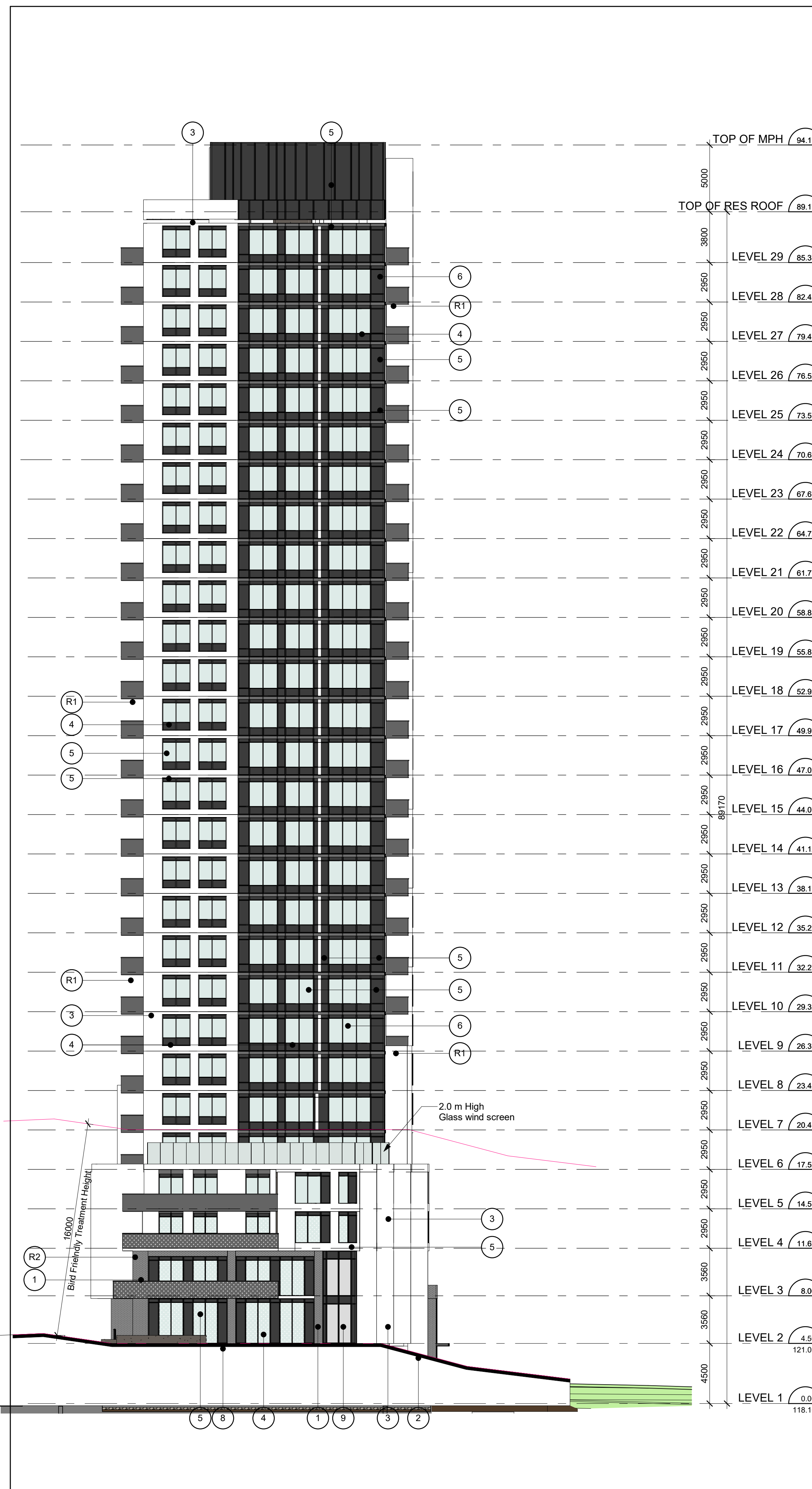
Scale:  
1 : 200  
Drawn by:  
Author  
Checked by:  
Checker  
Project No.:  
15-067  
Date:  
Oct 13, 2023  
Drawing No.:



dA4.2



**EAST ELEVATION** 1  
Scale: 1:200 dA4.3



**WEST ELEVATION** 2  
Scale: 1:200 dA4.3

- EXTERIOR FINISH LEGEND**  
15067-1 RICHVIEW - BUILDING C
- EXTERIOR CLADDING**
- 1 STONE VENEER  
BRAMPTON BRICK,  
COLOUR: SILHOUETTE: SUAVE
  - 2 FORMED CONCRETE WITH INTEGRAL COLOUR  
MATCH: BRAMPTON BRICK, SILHOUETTE: SUAVE
  - 3 PRECAST CLADDING,  
MATCH: BRAMPTON BRICK, ICELAND WHITE: SUAVE
- GLAZING**
- 4 PREFINISHED WINDOW WALL SYSTEM - VISION  
GLASS: VISION PANEL
  - 5 PREFINISHED WINDOW WALL SYSTEM - SPANDREL GLASS  
SPANDREL COLOR: DARK GRAY
  - 6 PREFINISHED WINDOW WALL SYSTEM - ALUMINUM PANEL  
PANEL COLOR: GRAY
  - 7 CURTAIN WALL SYSTEM - VISION  
GLASS: VISION PANEL
  - 8 CURTAIN WALL SYSTEM - GLASS SPANDREL  
SPANDREL COLOUR: DARK GRAY
  - 9 CURTAIN WALL SYSTEM - GLASS SPANDREL  
SPANDREL COLOUR: LIGHT GRAY
- CANOPIES**
- C1 PRE-FINISHED ALUMINUM CANOPY WITH RECESSED  
SOFFIT LIGHTING  
DURANAR Charcoal Gray UC54271
- RAILING**
- R1 PRE-FINISHED ALUMINUM RAILING  
PANEL: TINTED GLASS
  - R2 PRE-FINISHED ALUMINUM RAILING  
PANEL: CLEAR GLASS
- DOORS**
- D1 MAIN ENTRANCE GLAZED DOUBLE DOOR
  - D2 EXIT DOOR
  - D3 STEEL ROLL-UP DOOR,  
PAINTED TO MATCH ADJACENT FINISH

**EXTERIOR FINISH LEGEND** 2  
NTS dA4.3

**Bird-Friendly Design Statistics**

	Elevation First 16m* Above Grade					Total (%)
	North	South	East	West	Total (m <sup>2</sup> )	
Cladding Area (m <sup>2</sup> )	539.62	828.00	218.62	165.16	1751.50	300%
Untreated Area (m <sup>2</sup> )	80.47	124.20	52.79	20.13	257.59	15%
Treated Area (m <sup>2</sup> )	461.96	707.17	187.62	139.88	1496.63	85%
Low-Reflectance Opaque Glass (m <sup>2</sup> )	89.78	410.85	101.49	34.11	636.23	36%
Visual Markers (m <sup>2</sup> )	372.18	256.32	86.13	105.77	860.40	49%
Shaded (m <sup>2</sup> )					0	0%

\*For Site Plan Approval application received before January 1, 2024, treat the first 12m above grade.

	Elevation First 6m Above Rooftop Vegetation*					Total (%)
	North (Floor #)	South (Floor #)	East (Floor #)	West (Floor #)	Total (m <sup>2</sup> )	
Cladding Area (m <sup>2</sup> )					0	0%
Untreated Area (m <sup>2</sup> )					0	0%
Treated Area (m <sup>2</sup> )					0	0%
Low-Reflectance Opaque Glass (m <sup>2</sup> )					0	0%
Visual Markers (m <sup>2</sup> )					0	0%
Shaded (m <sup>2</sup> )					0	0%

\* Include this section only when applicable and provide relevant floor numbers for reference.

Building Window : Wall Ratio

Refer to the Toronto Green Standard Version 3 Ecology section for details on bird collision deterrence treatment options.

**Bird Friendly Statistics** 3  
NTS dA4.3

All Drawings, Specifications, and Related Documents are the Copyright of the Architect. The Architect retains all rights to control all uses of these documents for the intended issuance/use as identified below. Reproduction of these Documents, without permission from the Architect, is strictly prohibited. The Authorities Having Jurisdiction are permitted to use, distribute, and reproduce these drawings for the intended issuance as noted and dated below, however the extended permission to the Authorities Having Jurisdiction in no way debases or limits the Copyright of the Architect, or control of use of these documents by the Architect.

Do not scale the drawings.  
This Drawing is Not To Be Used For Construction Until Signed By The Architect.

Date:



20 De Boers Drive Suite 400  
Toronto, ON M3J 0H1

Revisions:  
No.: Revision: Date:

No.	Revision:	Date:
7.	Re-Zoning Re-submission	Feb 13, 2023
6.	Re-Zoning Re-submission	Feb 10, 2023
5.	Re-Zoning Re-submission	Feb 08, 2023
4.	Re-Zoning Re-submission	Feb 03, 2023
3.	Re-Zoning Re-submission	Dec 22, 2020
2.	Re-Zoning Re-submission	Oct 07, 2020
1.	Re-Zoning	Dec 14, 2018

Client:  
**HR Developments | Fieldgate**

**Betovan Construction Ltd.**  
Proposed Residential Development

Drawing Title:  
**Elevation East & West**

Scale:  
1 : 200

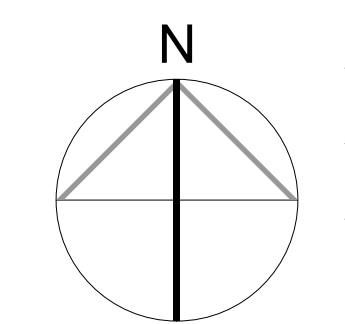
Drawn by:  
Author

Checked by:  
Checker

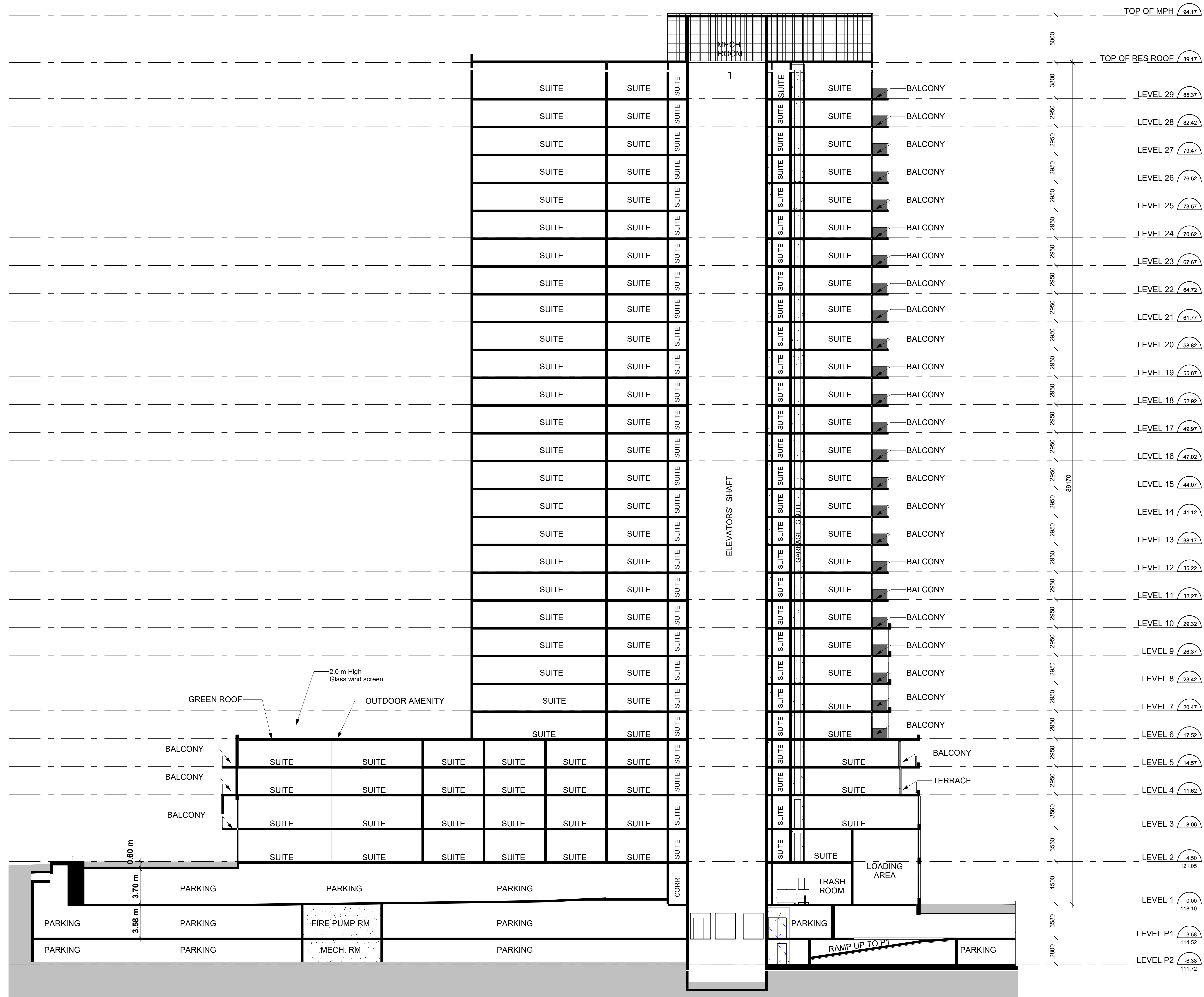
Project No.:  
15-067

Date:  
Oct 13, 2023

Drawing No.:



**dA4.3**



All Drawings, Specifications, and Related Documents are the Copyright of the Architect. The Architect retains all rights to control all uses of these documents for the intended issuance/use as identified below. Reproduction of these Documents, without permission from the Architect, is strictly prohibited. The Authorities Having Jurisdiction are permitted to use, distribute, and reproduce these drawings for the intended issuance as noted and dated below, however the extended permission to the Authorities Having Jurisdiction in no way debases or limits the Copyright of the Architect, or control of use of these documents by the Architect.

Do not scale the drawings.  
This Drawing is Not To Be Used For Construction Until Signed By The Architect.

Date:



20 De Boers Drive Suite 400  
Toronto, ON M3J 0H1

Revisions:		
No.:	Revision:	Date:

DRAFT

7.	Re-Zoning Re-submission	Feb 13, 2023
6.	Re-Zoning Re-submission	Feb 10, 2023
5.	Re-Zoning Re-submission	Feb 08, 2023
4.	Re-Zoning Re-submission	Feb 03, 2023
3.	Re-Zoning Re-submission	Dec 22, 2020
2.	Re-Zoning Re-submission	Oct 07, 2020
1.	Re-Zoning	Dec 14, 2018
No.:	Issued For:	Date:

Client:  
**HR Developments | Fieldgate**

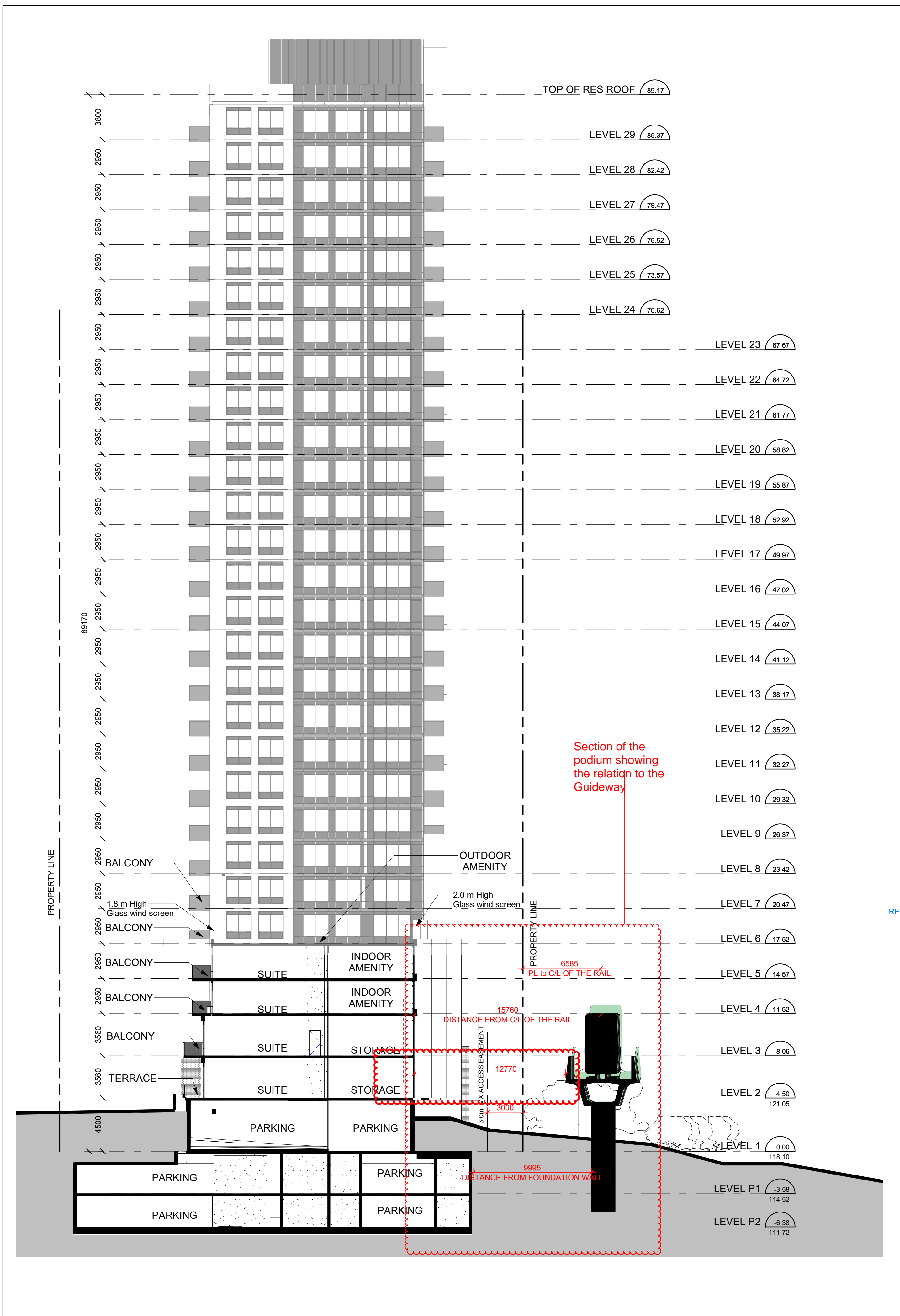
**Betovan Construction Ltd.**  
Proposed Residential Development

Drawing Title:  
**Building Sections**

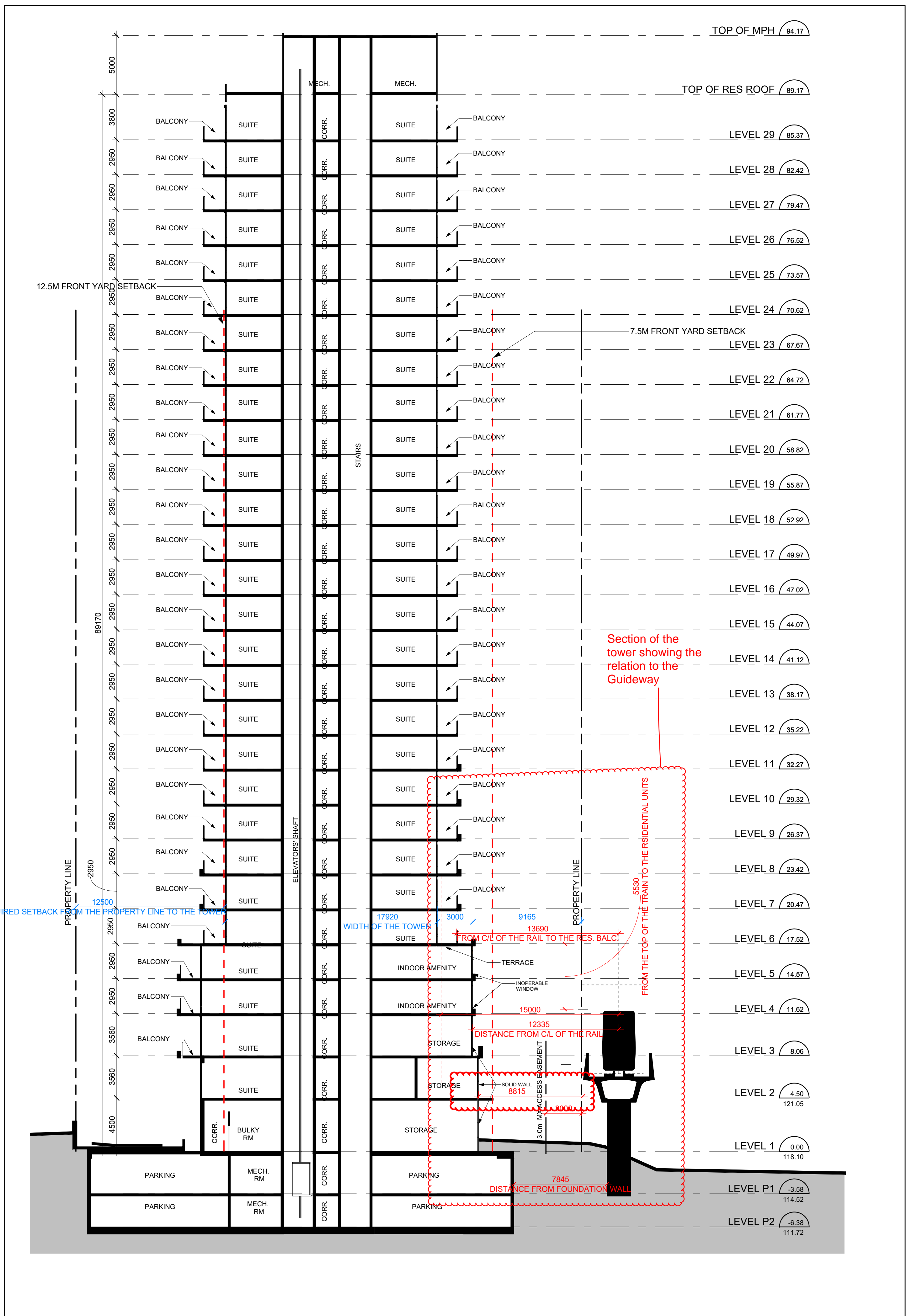
Scale:  
**1 : 200**  
Drawn by:  
**Author**  
Checked by:  
**Checker**  
Project No.:  
**15-067**  
Date:  
**Oct 13, 2023**  
Drawing No.:

**EAST WEST SECTION** 1  
Scale: 1 : 200 dA5.1

**dA5.1**



NORTH SOUTH SECTION @ PODIUM 2  
Scale: 1:200 dA5.2



NORTH SOUTH SECTION @ TOWER 1  
Scale: 1:200 dA5.2

All Drawings, Specifications, and Related Documents are the Copyright of the Architect. The Architect retains all rights to control all uses of these documents for the intended issuance/use as identified below. Reproduction of these Documents, without permission from the Architect, is strictly prohibited. The Authorities Having Jurisdiction are permitted to use, distribute, and reproduce these drawings for the intended issuance as noted and dated below, however the extended permission to the Authorities Having Jurisdiction in no way debases or limits the Copyright of the Architect, or control of use of these documents by the Architect.

Do not scale the drawings.  
This Drawing is Not To Be Used For Construction Until Signed By The Architect.  
Date:

**KIRKOR**  
ARCHITECTS AND PLANNERS  
20 De Boers Drive Suite 400  
Toronto, ON M3J 0H1

Revisions:  
No.: Revision: Date:

No.	Revision:	Date:
7.	Re-Zoning Re-submission	Feb 13, 2023
6.	Re-Zoning Re-submission	Feb 10, 2023
5.	Re-Zoning Re-submission	Feb 08, 2023
4.	Re-Zoning Re-submission	Feb 03, 2023
3.	Re-Zoning Re-submission	Dec 22, 2020
2.	Re-Zoning Re-submission	Oct 07, 2020
1.	Re-Zoning	Dec 14, 2018

Client:  
**HR Developments | Fieldgate**

Proposed Residential Development  
**Betovan Construction Ltd.**

Drawing Title:  
**Building Sections**

Scale:  
1:200

Drawn by:  
Author

Checked by:  
Checker

Project No.:  
15-067

Date:  
Oct 13, 2023

Drawing No.:

DRAFT

dA5.2