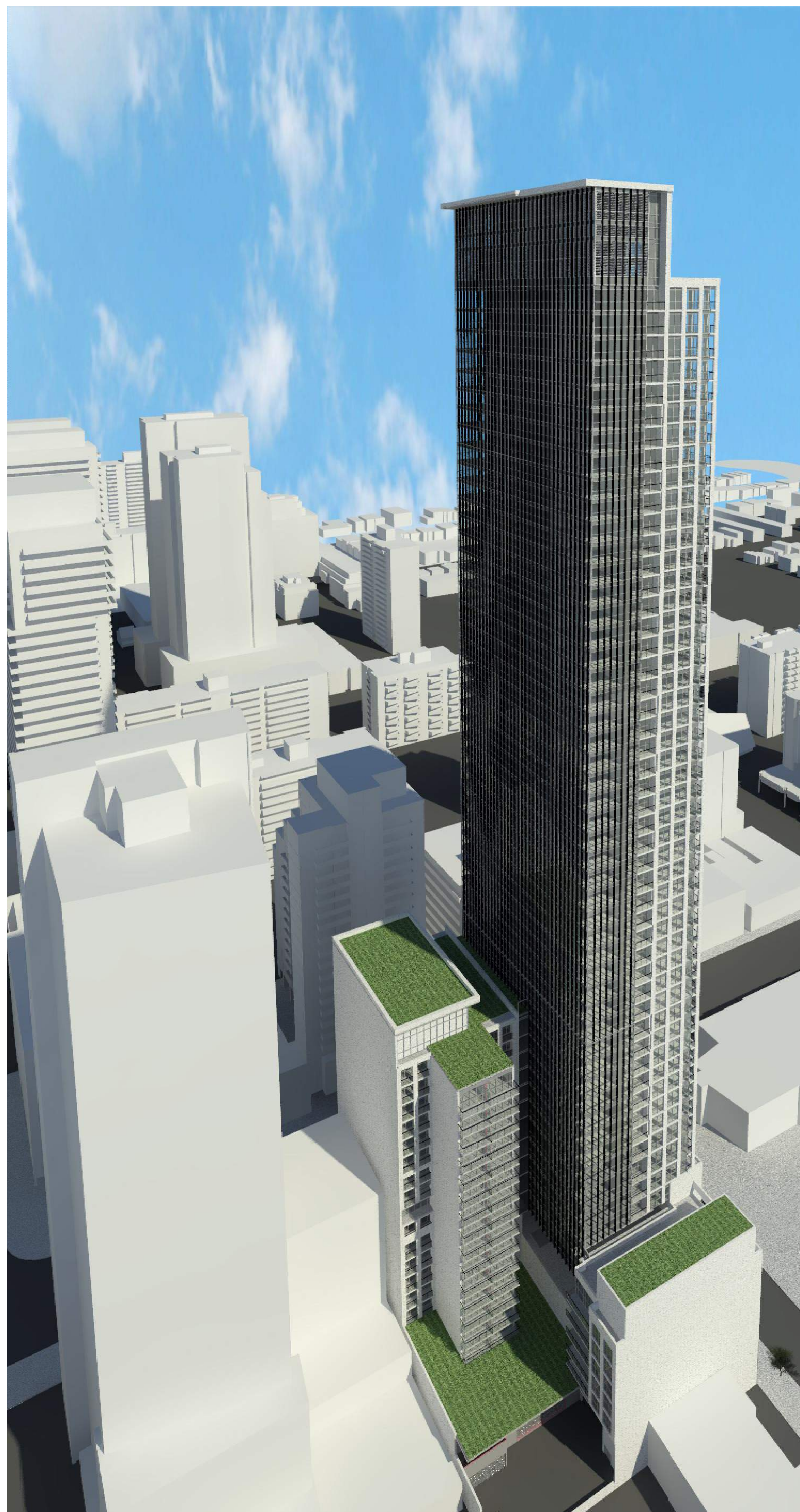


ISSUED	DATE	DESCRIPTION
1	27/09/2023	ISSUED FOR ZBA

**GENERAL NOTES**

- DRAWINGS ARE PREPARED BASED ON BOUNDARY PLAN AND TOPOGRAPHICAL SURVEY OF PART OF LOTS 1 & 2, BLOCK H REGISTERED PLAN 88 IN THE CITY OF TORONTO, AS PREPARED BY R. ASS SURVEYING INC. AND DATED APRIL 29, 2022.
- DRAWINGS ARE TO BE READ IN CONJUNCTION WITH ALL OTHER CONSULTANTS' DRAWINGS AND REPORTS.
- REFER TO TRAFFIC CONSULTANT'S DOCUMENTATION FOR TRAFFIC DIAGRAMS, TURNING RADIUS, TRAFFIC REPORT AND SITE ACCESS INFORMATION.
- REFER TO LANDSCAPE ARCHITECT'S DRAWINGS FOR LANDSCAPING INFORMATION, GRADING, GREEN ROOF AND OUTDOOR AMENITY SPACES. REFER TO SITE SERVICES / CIVIL ENGINEER'S DRAWINGS AND REPORTS FOR SITE SERVICES AND UTILITY INFORMATION.
- REFER TO WASTE MANAGEMENT CONSULTANT'S DESIGN BRIEF FOR INFORMATION ABOUT WASTE STORAGE, PICK-UP AND HANDLING FOR ALL USE OCCUPANCIES.
- REFER TO LIFESAFETY FROM STRUCTURAL ENGINEER FOR DRIVEWAYS, PASSAGE WAYS AND LOADING SPACE WITH IMPACT FACTORS WHERE THEY ARE LOCATED OVER A SUPPORTED STRUCTURE.
- ALL LOADING AND UNLOADING MUST BE ACCOMMODATED ON SITE WITHIN THE LIMITS OF THE DESIGNATED LOADING SPACES. ON SITE TRAINED STAFF TO BE PRESENT DURING GARBAGE COLLECTION FOR MANEUVERING OF BINS AND TO ASSIST GARBAGE TRUCKS AND OTHER VEHICLES WITH THE BACKUP MANEUVER TOP FROM THE LOADING SPACE.
- ALL DRIVEWAYS AND PASSAGE WAYS FOR FIRE ACCESS ROUTE AND TO THE LOADING SPACE OVER A SUPPORTED STRUCTURE ARE TO BE CONSTRUCTED AS PER THE EXISTING BUILDING CODE REQUIREMENTS, INCLUDING ALLOWANCES FOR THE CITY OF TORONTO PEAK 10 T VEHICLES.
- ACCEPTABLE TRAFFIC SIGNS AND MIRRORS TO BE INSTALLED TO WARN MOTORISTS OF ONCOMING TRAFFIC AND POSITIONED SUCH THAT MOTORISTS ARE PROVIDED WITH CLEAR VIEWS OF ONCOMING TRAFFIC.
- BUILDING TO BE FULLY SPRINKLED.
- WARNING SYSTEM TO BE INSTALLED TO ALERT DRIVERS WHEN EXITING THE UNDERGROUND PARKING GARAGE WHEN LARGE TRUCKS ARE MANEUVERING WITHIN THE SURFACE DRIVEWAY.



VIEW SHOWING SOUTH WEST SIDE



VIEW SHOWING NORTH WEST SIDE



VIEW SHOWING NORTH EAST SIDE

REVISIONS

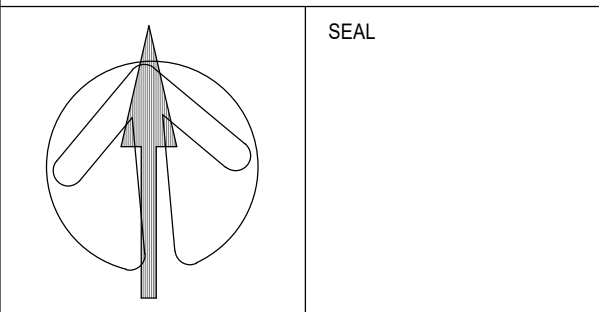
NO.	DATE	DESCRIPTION
-----	------	-------------

ALL DIMENSIONS ARE TO BE CHECKED ON SITE BY THE CONTRACTOR. ANY DISCREPANCIES ARE TO BE REPORTED TO THE ARCHITECT BEFORE PROCEEDING WITH THE WORK. DRAWINGS ARE NOT TO BE SCALED.

**COPYRIGHT**

The information contained herein is the property of Arcadis Architects Inc. All rights reserved. No part of this document may be reproduced, stored in a retrieval system, or transmitted in any form or by any means, electronic, mechanical, photocopying, recording, or by any information storage and retrieval system, without the prior written permission of Arcadis Architects Inc. For general information, please contact us at:

Arcadis Architects (Canada) Inc.



PROJECT  
**181 & 191 EGLINTON AVENUE EAST**  
 Toronto, ON

SHEET TITLE  
**RENDERED VIEWS**

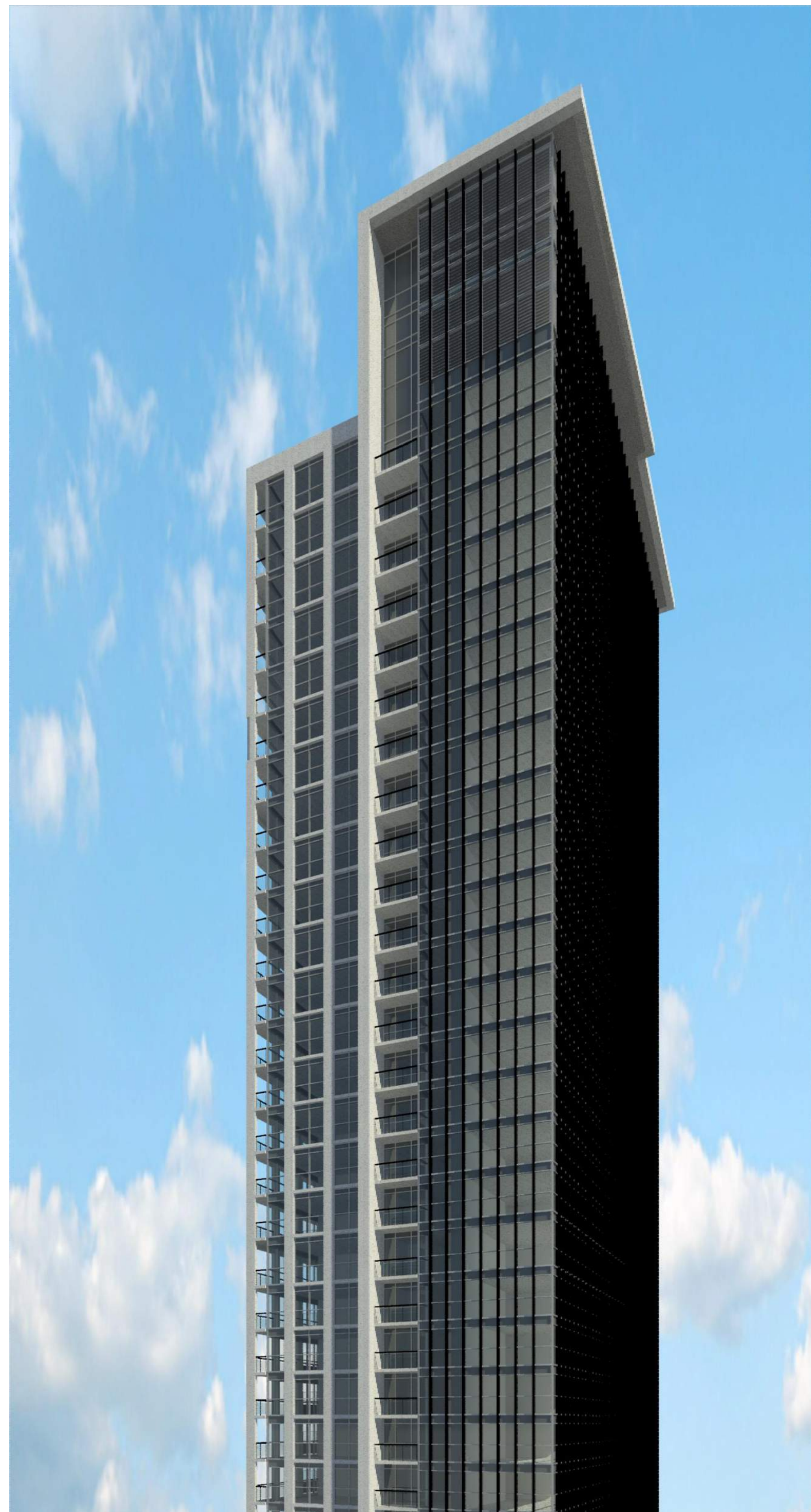
DRAWN BY	CHKD BY	DATE	SCALE
ARCADIS	ARCADIS	23/06/2023	1 : 100

PROJECT NO.	DWG NO.	
137959	A401	





PODIUM VIEW SHOWING SOUTH EAST SIDE



TOWER TOP VIEW SHOWING NORTH WEST SIDE



PODIUM VIEW SHOWING NORTH WEST SIDE



PODIUM VIEW SHOWING NORTH EAST SIDE

**CAMROST FELCORP**

CAMROST FELCORP Inc.

ISSUED	DATE	DESCRIPTION
1	27/08/2023	ISSUED FOR ZBA

**GENERAL NOTES**

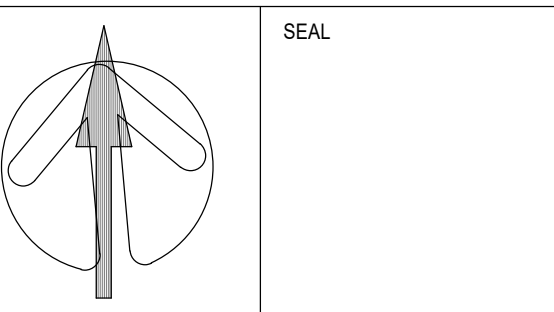
- DRAWINGS ARE PREPARED BASED ON BOUNDARY PLAN AND TOPOGRAPHICAL SURVEY OF PART OF LOTS 1 & 2, BLOCK H REGISTERED PLAN 894 IN THE CITY OF TORONTO AS PREPARED BY R. BAIS SURVEYING INC. AND DATED APRIL 29, 2022.
- DRAWINGS ARE TO BE READ IN CONJUNCTION WITH ALL OTHER CONSULTANT'S DRAWINGS AND REPORTS.
- REFER TO TRAFFIC CONSULTANT'S DOCUMENTATION FOR TRAFFIC DIAGRAMS, TURNING RADI, TRAFFIC REPORT AND SITE ACCESS INFORMATION.
- REFER TO LANDSCAPE ARCHITECT'S DRAWINGS FOR LANDSCAPING INFORMATION, GRADING, GREEN ROOF, AND OUTDOOR AMENITY SPACES.
- REFER TO SITE SERVING CIVIL ENGINEER'S DRAWINGS AND REPORTS FOR SITE SERVING AND UTILITY INFORMATION.
- REFER TO WASTE MANAGEMENT CONSULTANT'S DESIGN BRIEF FOR INFORMATION ABOUT WASTE STORAGE, PICK UP AND HANDLING FOR ALL USE OCCUPANCIES.
- REFER TO LETTER FROM STRUCTURAL ENGINEER FOR DRIVEWAYS, PASSAGE WAYS AND LOADING SPACE WITH IMPACT FACTORS WHERE THEY ARE LOCATED OVER A SUPPORTED STRUCTURE.
- ALL LOADING AND UNLOADING MUST BE ACCOMMODATED ON SITE WITHIN THE LIMITS OF THE DESIGNATED LOADING SPACES. ON SITE TRAINED STAFF TO BE PRESENT DURING GARBAGE COLLECTION FOR MANEUVERING OF BINS AND TO ASSIST GARBAGE TRUCKS AND OTHER VEHICLES WITH THE BACKUP MANUEVER TO/FROM THE LOADING SPACE.
- ALL DRIVEWAYS AND PASSAGE WAYS FOR FIRE ACCESS ROUTE AND TO THE LOADING SPACE OVER A SUPPORTED STRUCTURE ARE TO BE CONSTRUCTED AS PER THE ONTARIO BUILDING CODE REQUIREMENTS, INCLUDING ALL ADVANCES FOR THE CITY OF TORONTO BUILT UP VEHICLES.
- ACCEPTABLE TRAFFIC SIGNS AND MIRRORS TO BE INSTALLED TO WARN MOTORISTS OF OBTAINING TRAFFIC AND POSITIONED SUCH THAT MOTORISTS ARE PROVIDED WITH CLEAR VIEWS OF ONCOMING TRAFFIC.
- BUILDING TO BE FULLY SPRINKLED
- WARNING SYSTEM TO BE INSTALLED TO ALERT DRIVER WHEN EXITING THE UNDERGROUND PARKING GARAGE WHEN LARGE TRUCKS ARE MANEUVERING WITHIN THE SURFACE DRIVEWAY

**REVISIONS**

ALL DIMENSIONS ARE TO BE CHECKED ON SITE BY THE CONTRACTOR. ANY DISCREPANCIES ARE TO BE REPORTED TO THE ARCHITECT BEFORE PROCEEDING WITH THE WORK. DRAWINGS ARE NOT TO BE SCALED.

**COPYRIGHT**  
The contents of these drawings shall be the intellectual property of Arcadis Architects (Canada) Inc. No part of these drawings shall be reproduced, stored in a retrieval system, or transmitted in any form or by any means, electronic, mechanical, photocopying, recording, or by any information storage and retrieval system, without the prior written permission of Arcadis Architects (Canada) Inc. All rights reserved.

Arcadis Architects (Canada) Inc.  
  
 ARCADIS ARCHITECTS (CANADA) INC.  
 55 St. Clair Avenue West | 20th Floor  
 Toronto | ON | M5V 2T1 | Canada  
 T 416 596 1930 | F 416 596 0644  
[www.arcadis.com](http://www.arcadis.com)



PROJECT  
**181 & 191 EGLINTON AVENUE EAST**  
 Toronto, ON

SHEET TITLE  
**REVISED VIEWS**

DRAWN BY	CHKD BY	DATE	SCALE
ARCADIS	ARCADIS	23/06/2023	1:100

PROJECT NO. 137959 DWG NO. A402