

Metrolinx Ontario Line – Temporary Lane Closures on the Don Valley Parkway and F.G. Gardiner Expressway and Temporary Delegation of Authority

Date: April 19, 2023
To: Executive Committee
From: General Manager, Transportation Services
Wards: All Wards

SUMMARY

This report provides an overview of Metrolinx's plans to construct the Ontario Line Don Valley Crossing and Lower Don Bridge, the two new bridges to carry the Ontario Line across the Don Valley Parkway. Construction of these new bridges will require multiple temporary lane closures on the Don Valley Parkway, F.G. Gardiner Expressway, and the Don Roadway between 2023 and 2028. The report discusses various construction activities and the number and duration of the temporary lane closures.

In addition, the report requests City Council amendment to City of Toronto Municipal Code Chapter 937, Temporary Closing of Highways, in order to provide for various temporary delegations of authority to the General Manager, Transportation Services to implement lane closures on the Don Valley Parkway and F.G. Gardiner Expressway for various time frames and periods for the purposes of various aspects related to the construction of the Ontario Line Don Valley Crossing and Lower Don Bridge. This report also requests City Council to amend Chapter 937 as well as City of Toronto Municipal Code Chapter 27, Council Procedures, in order to delegate to the General Manager, Transportation Services, the authority to temporarily close the Don Roadway for various time frames and periods for the purposes of various aspects related to the construction of the Ontario Line Don Valley Crossing and Lower Don Bridge.

RECOMMENDATIONS

The General Manager, Transportation Services, recommends that:

1. City Council amend City of Toronto Municipal Code Chapter 937, Temporary Closing of Highways, to delegate to the General Manager, Transportation Services, to facilitate the test pit investigation work related to the Ontario Line Don Valley Crossing, despite Section 937-4 of Code Chapter 937, the authority to temporarily close to vehicular traffic:

a. the southbound outside lane and adjacent pavement shoulder on the Don Valley Parkway, between 400 metres north of the Leaside Bridge and 100 metres south of Beechwood Drive, from 11:00 p.m. of one day to 5:00 a.m. on the following day for three nights between June 1, 2023 and June 12, 2023, inclusive,

and exempt the General Manager, Transportation Services, in carrying out this delegated authority from Section 937-5 of Chapter 937, that being the requirement to notify the local Ward Councillor of the pending closure and the requirement to report on the proposed closure if so requested by the local Ward Councillor.

2. City Council amend City of Toronto Municipal Code Chapter 937, Temporary Closing of Highways, to delegate to the General Manager, Transportation Services, to facilitate the geotechnical investigation site visit related to the Ontario Line Don Valley Crossing, despite Section 937-4 of Code Chapter 937, the authority to temporarily close to vehicular traffic:

a. the northbound outside lane and adjacent pavement shoulder on the Don Valley Parkway, between 600 metres south of Beechwood Drive and 350 metres north of Leaside Bridge, from 11:00 p.m. of one day to 2:00 a.m. on the following day for one night between May 15, 2023 and May 31, 2023, inclusive;

b. the southbound outside lane and adjacent pavement shoulder on the Don Valley Parkway, between 450 metres north of the Leaside Bridge and 300 metres south of Beechwood Drive, from 11:00 p.m. of one day to 2:00 a.m. on the following day for one night between May 15, 2023 and May 31, 2023, inclusive;

c. the northbound inside lane and adjacent pavement shoulder on the Don Valley Parkway, between 600 metres south of Beechwood Drive and 350 metres north of Leaside Bridge, from 2:00 a.m. of one day to 5:00 a.m. of the same day for one night between May 15, 2023 and May 31, 2023, inclusive; and

d. the southbound inside lane and adjacent pavement shoulder on the Don Valley Parkway, between 450 metres north of the Leaside Bridge and 300 metres south of Beechwood Drive, from 2:00 a.m. of one day to 5:00 a.m. of the same day for one night between May 15, 2023 and May 31, 2023, inclusive,

and exempt the General Manager, Transportation Services, in carrying out this delegated authority from Section 937-5 of Chapter 937, that being the requirement to notify the local Ward Councillor of the pending closure and the requirement to report on the proposed closure if so requested by the local Ward Councillor.

3. City Council amend City of Toronto Municipal Code Chapter 937, Temporary Closing of Highways, to delegate to the General Manager, Transportation Services, to facilitate the geotechnical borehole and instrumentation work related to the Ontario Line Don Valley Crossing, despite Section 937-4 of Code Chapter 937, the authority to temporarily close to vehicular traffic:

a. the northbound outside lane and adjacent pavement shoulder on the Don Valley Parkway, between 600 metres south of Beechwood Drive and 350 metres north of the Leaside Bridge, for up to and including fifty nights from 11:00 p.m. of one day to 5:00 a.m. of the following day, excluding Saturday and Sunday overnights, between June 12, 2023 and September 1, 2023, inclusive;

b. the southbound outside lane and adjacent pavement shoulder on the Don Valley Parkway, between 450 metres north of the Leaside Bridge and 300 metres south of Beechwood Drive, for up to and including thirty-five nights from 11:00 p.m. of one day to 5 a.m. of the following day, excluding Saturday and Sunday overnights, between June 12, 2023 and September 1, 2023, inclusive;

c. the northbound inside lane and adjacent pavement shoulder on the Don Valley Parkway, between 600 metres south of Beechwood Drive and 350 metres north of the Leaside Bridge, for up to and including eight nights from 11:00 p.m. of one day to 5 a.m. of the following day, excluding Saturday and Sunday overnights, between June 12, 2023 and September 1, 2023, inclusive; and

d. the southbound inside lane and adjacent pavement shoulder on the Don Valley Parkway, between 450 metres north of the Leaside Bridge and 300 metres south of Beechwood Drive, for up to and including thirteen nights from 11:00 p.m. of one day to 5 a.m. of the following day, excluding Saturday and Sunday overnights, between June 12, 2023 and September 1, 2023, inclusive,

and exempt the General Manager, Transportation Services, in carrying out this delegated authority from Section 937-5 of Chapter 937, that being the requirement to notify the local Ward Councillor of the pending closure and the requirement to report on the proposed closure if so requested by the local councillor.

4. City Council direct the General Manager, Transportation Services to add as a condition of permit that, between June 12, 2023 and September 1, 2023, inclusive, the Metrolinx contractor will implement only one temporary lane closure per direction per night on the Don Valley Parkway, between 450 metres north of Leaside Bridge and 600 metres south of Beechwood Drive, to facilitate the geotechnical borehole and instrumentation work related to the Ontario Line Don Valley Crossing.

5. City Council amend City of Toronto Municipal Code Chapter 937, Temporary Closing of Highways, to delegate to the General Manager, Transportation Services, to facilitate the geotechnical monitoring and measurement work related to the Ontario Line Don Valley Crossing, despite Section 937-4 of Code Chapter 937, the authority to temporarily close to vehicular traffic:

a. the northbound outside lane and adjacent pavement shoulder on the Don Valley Parkway, between 600 metres south of Beechwood Drive and 350 metres north of the Leaside Bridge, from 11:00 p.m. of one day to 5:00 a.m. on the following day for one night between September 1, 2023 and September 30, 2023, inclusive;

b. the southbound outside lane and adjacent pavement shoulder on the Don Valley Parkway, between 450 metres north of the Leaside Bridge and 300 metres south of Beechwood Drive, from 11:00 p.m. of one day to 5:00 a.m. on the following day for one night between September 1, 2023 and September 30, 2023, inclusive;

c. the northbound outside lane and adjacent pavement shoulder on the Don Valley Parkway, between 600 metres south of Beechwood Drive and 350 metres north of the Leaside Bridge, from 11:00 p.m. of one day to 5:00 a.m. on the following day for one night between November 1, 2023 and November 30, 2023, inclusive;

d. the southbound outside lane and adjacent pavement shoulder on the Don Valley Parkway, between 450 metres north of the Leaside Bridge and 300 metres south of Beechwood Drive, from 11:00 p.m. of one day to 5:00 a.m. on the following day for one night between November 1, 2023 and November 30, 2023, inclusive;

e. the northbound outside lane and adjacent pavement shoulder on the Don Valley Parkway, between 600 metres south of Beechwood Drive and 350 metres north of the Leaside Bridge, from 11:00 p.m. of one day to 5:00 a.m. on the following day for one night between April 1, 2024 and April 30, 2024, inclusive;

f. the southbound outside lane and adjacent pavement shoulder on the Don Valley Parkway, between 450 metres north of the Leaside Bridge and 300 metres south of Beechwood Drive, from 11:00 p.m. of one day to 5:00 a.m. on the following day for one night between April 1, 2024 and April 30, 2024, inclusive;

g. the northbound outside lane and adjacent pavement shoulder on the Don Valley Parkway, between 600 metres south of Beechwood Drive and 350 metres north of the Leaside Bridge, from 11:00 p.m. of one day to 5:00 a.m. on the following day for one night between July 1, 2024 and July 31, 2024, inclusive; and

h. the southbound outside lane and adjacent pavement shoulder on the Don Valley Parkway, between 450 metres north of the Leaside Bridge and 300 metres south of Beechwood Drive, from 11:00 p.m. of one day to 5:00 a.m. on the following day for one night between July 1, 2024 and July 31, 2024, inclusive,

and exempt the General Manager, Transportation Services, in carrying out this delegated authority from Section 937-5 of Chapter 937, that being the requirement to notify the local Ward Councillor of the pending closure and the requirement to report on the proposed closure if so requested by the local councillor.

6. City Council amend City of Toronto Municipal Code Chapter 937, Temporary Closing of Highways, to delegate to the General Manager, Transportation Services, to facilitate the installation and removal of the temporary slope safety system related to the Ontario Line Don Valley Crossing, despite Section 937-4 of Code Chapter 937, the authority to temporarily close to vehicular traffic:

a. the northbound outside lane and adjacent pavement shoulder on the Don Valley Parkway, between 600 metres south of Beechwood Drive and 350 metres north of the Leaside Bridge, from 11:00 p.m. of one day to 5:00 a.m. on the following day for up to and including ten nights between April 1, 2024 and April 30, 2024, inclusive; and

b. the northbound outside lane and adjacent pavement shoulder on the Don Valley Parkway, between 600 metres south of Beechwood Drive and 350 metres north of the Leaside Bridge, from 11:00 p.m. of one day to 5:00 a.m. on the following day for up to and including ten nights between June 1, 2027 and June 30, 2027, inclusive,

and exempt the General Manager, Transportation Services, in carrying out this delegated authority from Section 937-5 of Chapter 937, that being the requirement to notify the local Ward Councillor of the pending closure and the requirement to report on the proposed closure if so requested by the local Ward Councillor.

7. City Council amend City of Toronto Municipal Code Chapter 937, Temporary Closing of Highways, to delegate to the General Manager, Transportation Service, to facilitate the installation of brackets and conduits on the south side of the existing Lower Don Bridge, despite Section 937-4 of Code Chapter 937, the authority to temporarily close to vehicular traffic:

a. the southbound outside lane on the Don Valley Parkway, between 20 metres north of Eastern Avenue and the Don Valley Parkway-F.G. Gardiner Expressway on-ramp, from 11:00 p.m. of one day to 5:00 a.m. on the following day for up to and including eight nights between July 1, 2023 and July 31, 2023, inclusive;

b. the south-to-westbound outside lane on the Don Valley Parkway-F.G. Gardiner Expressway on-ramp, between the Don Valley Parkway and a point 150 metres south, from 11:00 p.m. of one day to 5:00 a.m. on the following day for up to and including eight nights between July 1, 2023 and July 31, 2023, inclusive;

c. the eastbound outside lane on the F.G. Gardiner Expressway, between Parliament Street and the Don Valley Parkway-F.G. Gardiner Expressway off-ramp, from 11:00 p.m. of one day to 5:00 a.m. on the following day for up to and including eight nights between July 1, 2023 and July 31, 2023, inclusive;

d. the east-to-northbound outside lane on the Don Valley Parkway-F.G. Gardiner Expressway off-ramp, between the F.G. Gardiner Expressway and Don Valley Parkway, from 11:00 p.m. of one day to 5:00 a.m. on the following day for up to and including eight nights between July 1, 2023 and July 31, 2023, inclusive;

e. the northbound middle lane on the Don Valley Parkway, between the Don Valley Parkway-F.G. Gardiner Expressway off-ramp and 200 metres south of Eastern Avenue, from 11:00 p.m. of one day to 5:00 a.m. on the following day for up to and including eight nights between July 1, 2023 and July 31, 2023, inclusive;

f. the northbound outside lane on the Don Valley Parkway, between the Don Roadway and 100 metres south of Eastern Avenue, from 11:00 p.m. of one day to 5:00 a.m. on the following day for up to and including eight nights between July 1, 2023 and July 31, 2023, inclusive;

g. the southbound inside lane on the Don Valley Parkway, between 20 metres north of Eastern Avenue and the Don Valley Parkway-F.G. Gardiner Expressway on-ramp, from 11:00 p.m. of one day to 5:00 a.m. on the following day for up to and including eight nights between August 1, 2023 and August 31, 2023, inclusive;

h. the south-to-westbound inside lane on the Don Valley Parkway-F.G. Gardiner Expressway on-ramp, between the Don Valley Parkway and 150 metres south, from 11:00 p.m. of one day to 5:00 a.m. on the following day for up to and including eight nights between August 1, 2023 and August 31, 2023, inclusive;

i. the eastbound inside lane on the F.G. Gardiner Expressway, between Parliament Street and the Don Valley Parkway-F.G. Gardiner Expressway off-ramp, from 11:00 p.m. of one day to 5:00 a.m. on the following day for up to and including eight nights between August 1, 2023 and August 31, 2023, inclusive;

j. the east-to-northbound inside lane on the Don Valley Parkway-F.G. Gardiner Expressway off-ramp, between the F.G. Gardiner Expressway and the Don Valley Parkway, from 11:00 p.m. of one day to 5:00 a.m. on the following day for up to and including eight nights between August 1, 2023 and August 31, 2023, inclusive; and

k. the northbound inside lane on the Don Valley Parkway, between the Don Valley-F.G. Gardiner Expressway off-ramp and 200 metres south of Eastern Avenue, from 11:00 p.m. of one day to 5:00 a.m. on the following day for up to and including eight nights between August 1, 2023 and August 31, 2023, inclusive,

and exempt the General Manager, Transportation Services, in carrying out this delegated authority from Section 937-5 of Chapter 937, that being the requirement to notify the local Ward Councillor of the pending closure and the requirement to report on the proposed closure if so requested by the local Ward Councillor

8. City Council amend City of Toronto Municipal Code Chapter 937, Temporary Closing of Highways, to delegate to the General Manager, Transportation Services, to facilitate the removal of the median barrier in September 2025 and its reconstruction in February 2026 related to the Ontario Line Lower Don Bridge, despite Section 937-4 of Code Chapter 937, the authority to temporarily close to vehicular traffic:

a. the eastbound inside lane on the F.G. Gardiner Expressway, between Parliament Street and the Don Valley Parkway-F.G. Gardiner Expressway off-ramp, from 11:00 p.m. of one day to 5:00 a.m. on the following day for up to and including two nights between September 1, 2025 and September 30, 2025,

inclusive, and for up to and including four nights between February 1, 2026 and February 28, 2026, inclusive;

b. the east-to-northbound inside lane on the Don Valley Parkway-F.G. Gardiner Expressway off-ramp, between the F.G. Gardiner Expressway and the Don Valley Parkway, from 11:00 p.m. of one day to 5:00 a.m. on the following day for up to and including two nights between September 1, 2025 and September 30, 2025, inclusive, and for up to and including four nights between February 1, 2026 and February 28, 2026, inclusive;

c. the northbound inside lane on the Don Valley Parkway, between the Don Valley Parkway-F.G. Gardiner Expressway off-ramp and 200 metres south of Eastern Avenue, from 11:00 p.m. of one day to 5:00 a.m. on the following day for up to and including two nights between September 1, 2025 and September 30, 2025, inclusive, and for up to and including four nights between February 1, 2026 and February 28, 2026, inclusive;

d. the southbound inside lane on the Don Valley Parkway, between 100 metres north of Eastern Avenue and the Don Valley Parkway-F.G. Gardiner Expressway on-ramp, from 11:00 p.m. of one day to 5:00 a.m. on the following day for up to and including two nights between September 1, 2025 and September 30, 2025, inclusive, and for up to and including four nights between February 1, 2026 and February 28, 2026, inclusive; and

e. the south-to-westbound inside lane on the F.G. Gardiner Expressway on-ramp, between the Don Valley Parkway and 150 metres south, from 11:00 p.m. of one day to 5:00 a.m. on the following day for up to and including two nights between September 1, 2025 and September 30, 2025, inclusive, and for up to and including four nights between February 1, 2026 and February 28, 2026, inclusive,

and exempt the General Manager, Transportation Services, in carrying out this delegated authority from Section 937-5 of Chapter 937, that being the requirement to notify the local Ward Councillor of the pending closure and the requirement to report on the proposed closure if so requested by the local Ward Councillor.

9. City Council amend City of Toronto Municipal Code Chapter 937, Temporary Closing of Highways, to delegate to the General Manager, Transportation Services, to facilitate the installation and removal of temporary falsework support, removal of the deck forming system and residual spot repairs related to the Ontario Line Lower Don Bridge, despite Section 937-4 of Code Chapter 937, the authority to temporarily close to vehicular traffic:

a. the southbound inside lane on the Don Valley Parkway, between 250 metres north of Gerrard Street and the Don Valley Parkway-F.G. Gardiner Expressway on-ramp, from 11:00 p.m. of one day to 5:00 a.m. on the following day for up to and including four nights between September 1, 2025 and September 30, 2025, inclusive, for one night between December 1, 2026 and December 31, 2026, inclusive, and for up to and including three nights between October 1, 2026 and January 31, 2027, inclusive;

b. the southbound middle lane on the Don Valley Parkway, between 60 metres south of Gerrard Street and the Don Valley Parkway-F.G. Gardiner Expressway on-ramp, from 11:00 p.m. of one day to 5:00 a.m. on the following day for up to and including four nights between September 1, 2025 and September 30, 2025, inclusive, for one night between December 1, 2026 and December 31, 2026, inclusive, and for up to and including three nights between October 1, 2026 and January 31, 2027, inclusive; and

c. the southbound outside lane on the Don Valley Parkway, between 160 metres south of Dundas Street and the Don Valley Parkway-F.G. Gardiner Expressway on-ramp, from 11:00 p.m. of one day to 5:00 a.m. on the following day for up to and including four nights between September 1, 2025 and September 30, 2025, inclusive, for one night between December 1, 2026 and December 31, 2026, inclusive, and for up to and including three nights between October 1, 2026 and January 31, 2027, inclusive,

and exempt the General Manager, Transportation Services, in carrying out this delegated authority from Section 937-5 of Chapter 937, that being the requirement to notify the local Ward Councillor of the pending closure and the requirement to report on the proposed closure if so requested by the local Ward Councillor.

10. City Council amend City of Toronto Municipal Code Chapter 937, Temporary Closing of Highways, to delegate to the General Manager, Transportation Services, to facilitate the Self-propelled Modular Transporter staging, removal of the deck forming system and residual spot repairs related to the Ontario Line Lower Don Bridge, despite Section 937-4 of Code Chapter 937, the authority to temporarily close to vehicular traffic:

a. the eastbound inside lane on the F.G. Gardiner Expressway, between Rees Street and the Don Valley Parkway-F.G. Gardiner Expressway off-ramp, from 11:00 p.m. of one day to 5:00 a.m. on the following day for up to and including two nights between January 1, 2026 and January 31, 2026, inclusive, and for up to and including three nights between October 1, 2026 and January 31, 2027, inclusive;

b. the eastbound middle lane on the F.G. Gardiner Expressway, between 80 metres east of Lower Simcoe Street and the Don Valley Parkway-F.G. Gardiner Expressway off-ramp, from 11:00 p.m. of one day to 5:00 a.m. on the following day for up to and including two nights between January 1, 2026 and January 31, 2026, inclusive, and for up to and including three nights between October 1, 2026 and January 31, 2027, inclusive;

c. the eastbound outside lane on the F.G. Gardiner Expressway, between 110 metres west of Bay Street and the Don Valley Parkway-F.G. Gardiner Expressway off-ramp, from 11:00 p.m. of one day to 5:00 a.m. on the following day for up to and including two nights between January 1, 2026 and January 31, 2026, inclusive, and for up to and including three nights between October 1, 2026 and January 31, 2027, inclusive;

d. the Don Valley Parkway-F.G. Gardiner Expressway off-ramp, between the F.G. Gardiner Expressway and the Don Valley Parkway, from 11:00 p.m. of one day to 5:00 a.m. on the following day for up to and including two nights between January 1, 2026 and January 31, 2026, inclusive, and for up to and including three nights between October 1, 2026 and January 31, 2027, inclusive;

e. the Don Valley Parkway northbound, all lanes, between the Don Valley Parkway-F.G. Gardiner Expressway and 100 metres south of Eastern Avenue, from 11:00 p.m. of one day to 5:00 a.m. on the following day for up to and including two nights between January 1, 2026 and January 31, 2026, inclusive, and for up to and including three nights between October 1, 2026 and January 31, 2027, inclusive;

f. the Bay Street-F.G. Gardiner Expressway East on-ramp, all lanes, from 11:00 p.m. to 5:00 a.m. for two nights from 11:00 p.m. of one day to 5:00 a.m. on the following day for up to and including two nights between January 1, 2026 and January 31, 2026, inclusive, and for up to and including three nights between October 1, 2026 and January 31, 2027, inclusive; and

g. the Rees Street-F.G. Gardiner Expressway East on-ramp, all lanes, from 11:00 p.m. of one day to 5:00 a.m. on the following day for up to and including two nights between January 1, 2026 and January 31, 2026, inclusive, and for up to and including three nights from October 1, 2026 January 31, 2027,

and exempt the General Manager, Transportation Services, in carrying out this delegated authority from Section 937-5 of Chapter 937, that being the requirement to notify the local Ward Councillor of the pending closure and the requirement to report on the proposed closure if so required by the local Ward Councillor.

11. City Council amend City of Toronto Municipal Code Chapter 937, Temporary Closing of Highways, to delegate to the General Manager, Transportation Services, to facilitate the launch of the Ontario Line Lower Don Bridge, despite Section 937-4 of Code Chapter 937, the authority to temporarily close to vehicular traffic:

a. the southbound inside lane on the Don Valley Parkway, between 250 metres north of Gerrard Street and the Don Valley Parkway-F.G. Gardiner Expressway on-ramp, from 11:00 p.m. of one Friday evening to 5:00 a.m. on the following Monday morning for one weekend between January 1, 2026 and February 2, 2026, inclusive;

b. the southbound middle lane on the Don Valley Parkway, between 60 metres south of Gerrard Street and the Don Valley Parkway-F.G. Gardiner Expressway on-ramp, from 11:00 p.m. of one Friday evening to 5:00 a.m. on the following Monday morning for one weekend between January 1, 2026 and February 2, 2026, inclusive;

c. the southbound outside lane on the Don Valley Parkway, between 160 metres south of Dundas Street and the Don Valley Parkway-F.G. Gardiner Expressway

on-ramp, from 11:00 p.m. of one Friday evening to 5:00 a.m. on the following Monday morning for one weekend between January 1, 2026 and February 2, 2026, inclusive;

d. the eastbound inside lane on the F.G. Gardiner Expressway, between Rees Street and the Don Valley Parkway-F.G. Gardiner Expressway off-ramp, from 11:00 p.m. of one Friday evening to 5:00 a.m. on the following Monday morning for one weekend between January 1, 2026 and February 2, 2026, inclusive;

e. the eastbound middle lane on the F.G. Gardiner Expressway, between 80 metres east of Lower Simcoe Street and the Don Valley Parkway-F.G. Gardiner Expressway off-ramp, from 11:00 p.m. of one Friday evening to 5:00 a.m. on the following Monday morning for one weekend between January 1, 2026 and February 2, 2026, inclusive;

f. the eastbound outside lane on the F.G. Gardiner Expressway, between 110 metres west of Bay Street and the Don Valley Parkway-F.G. Gardiner Expressway off-ramp, from 11:00 p.m. of one Friday evening to 5:00 a.m. on the following Monday morning for one weekend between January 1, 2026 and February 2, 2026, inclusive;

g. the Don Valley Parkway-F.G. Gardiner Expressway off-ramp, between the F.G. Gardiner Expressway and the Don Valley Parkway, from 11:00 p.m. of one Friday evening to 5:00 a.m. on the following Monday morning for one weekend between January 1, 2026 and February 2, 2026, inclusive;

h. the Don Valley Parkway northbound, all lanes, between the Don Valley Parkway-F.G. Gardiner Expressway and 100 metres south of Eastern Avenue, from 11:00 p.m. of one Friday evening to 5:00 a.m. on the following Monday morning for one weekend between January 1, 2026 and February 2, 2026, inclusive;

i. the Bay Street-F.G. Gardiner Expressway East on-ramp from 11:00 p.m. of one Friday evening to 5:00 a.m. on the following Monday morning for one weekend between January 1, 2026 and February 2, 2026, inclusive; and

j. the Rees Street-F.G. Gardiner Expressway East on-ramp from 11:00 p.m. of one Friday evening to 5:00 a.m. on the following Monday morning for one weekend between January 1, 2026 and February 2, 2026, inclusive,

and exempt the General Manager, Transportation Services, in carrying out this delegated authority from Section 937-5 of Chapter 937, that being the requirement to notify the local Ward Councillor of the pending closure and the requirement to report on the proposed closure if so required by the local Ward Councillor.

12. City Council amend City of Toronto Municipal Code Chapter 937, Temporary Closing of Highways, to delegate to the General Manager, Transportation Services, to facilitate tightening of bridge cables, removal of bridge arch bracing, installation of debris shield, bridge deck concrete placement, bridge railing curb placement, removal of Metrolinx Ontario Line – Temporary Lane Closures on the Don Valley Parkway and F.G. Gardiner Expressway

debris shield, and finishing of the bridge structure related to the Ontario Line Lower Don Bridge, despite Section 937-4 of Code Chapter 937, the authority to temporarily close to vehicular traffic:

a. the southbound inside lane on the Don Valley Parkway, between 250 metres north of Gerrard Street and the Don Valley Parkway-F.G. Gardiner Expressway on-ramp, from 11:00 p.m. of one day to 5:00 a.m. on the following day for one night between June 1, 2026 and June 30, 2026, inclusive, for up to and including two nights between July 1, 2026 and July 31, 2026, inclusive, for one night between August 1, 2026 and August 31, 2026, inclusive, for one night between September 1, 2026 and September 30, 2026, inclusive, for one night between October 1, 2026 and October 31, 2026, inclusive, for one night between November 1, 2026 and November 30, 2026, inclusive, and for up to and including four nights between December 1, 2026 and January 27, 2027, inclusive;

b. the southbound middle lane on the Don Valley Parkway, between 60 metres south of Gerrard Street and the Don Valley Parkway-F.G. Gardiner Expressway on-ramp, from 11:00 p.m. of one day to 5:00 a.m. on the following day for one night between June 1, 2026 and June 30, 2026, inclusive, for up to and including two nights between July 1, 2026 and July 31, 2026, inclusive, for one night between August 1, 2026 and August 31, 2026, inclusive, for one night between September 1, 2026 and September 30, 2026, inclusive, for one night between October 1, 2026 and October 31, 2026, inclusive, for one night between November 1, 2026 and November 30, 2026, inclusive, and for up and including four nights between December 1, 2026 and January 27, 2027, inclusive;

c. the southbound outside lane on the Don Valley Parkway, between 160 metres south of Dundas Street and the Don Valley Parkway-F.G. Gardiner Expressway on-ramp, from 11:00 p.m. of one day to 5:00 a.m. on the following day for one night between June 1, 2026 and June 30, 2026, inclusive, for up to and including two nights between July 1, 2026 and July 31, 2026, inclusive, for one night between August 1, 2026 and August 31, 2026, inclusive, for one night between September 1, 2026 and September 30, 2026, inclusive, for one night between October 1, 2026 and October 31, 2026, inclusive, for one night between November 1, 2026 and November 30, 2026, inclusive, and for up to and including four nights between December 1, 2026 and January 27, 2027, inclusive;

d. the eastbound inside lane on the F.G. Gardiner Expressway, between Rees Street and the Don Valley Parkway-F.G. Gardiner Expressway off-ramp, from 11:00 p.m. of one day to 5:00 a.m. on the following day for one night between June 1, 2026 and June 30, 2026, inclusive, for up to and including two nights between July 1, 2026 and July 31, 2026, inclusive, for one night between August 1, 2026 and August 31, 2026, inclusive, for one night between September 1, 2026 and September 30, 2026, inclusive, for one night between October 1, 2026 and October 31, 2026, inclusive, for one night between November 1, 2026 and November 30, 2026, inclusive, and for up to and including four nights between December 1, 2026 and January 27, 2027, inclusive;

e. the eastbound middle lane on the F.G. Gardiner Expressway, between 80 metres east of Lower Simcoe Street and the Don Valley Parkway-F.G. Gardiner Expressway off-ramp, from 11:00 p.m. of one day to 5:00 a.m. on the following day for one night between June 1, 2026 and June 30, 2026, inclusive, for up to and including two nights between July 1, 2026 and July 31, 2026, inclusive, for one night between August 1, 2026 and August 31, 2026, inclusive, for one night between September 1, 2026 and September 30, 2026, inclusive, for one night between October 1, 2026 and October 31, 2026, inclusive, for one night between November 1, 2026 and November 30, 2026, inclusive, and for up to and including four nights between December 1, 2026 and January 27, 2027, inclusive;

f. the eastbound outside lane on the F.G. Gardiner Expressway, between 110 metres west of Bay Street and the Don Valley Parkway-F.G. Gardiner Expressway off-ramp, from 11:00 p.m. of one day to 5:00 a.m. of the following day for one night between June 1, 2026 and June 30, 2026, inclusive, for up to and including two nights between July 1, 2026 and July 31, 2026, inclusive, for one night between August 1, 2026 and August 31, 2026, inclusive, for one night between September 1, 2026 and September 30, 2026, inclusive, for one night between October 1, 2026 and October 31, 2026, inclusive, for one night between November 1, 2026 and November 30, 2026, inclusive, and for up to and including four nights between December 1, 2026 and January 27, 2027, inclusive;

g. the Don Valley Parkway-F.G. Gardiner Expressway off-ramp, between the F.G. Gardiner Expressway and the Don Valley Parkway, from 11:00 p.m. of one day to 5:00 a.m. on the following day for one night between June 1, 2026 and June 30, 2026, inclusive, for up to and including two nights between July 1, 2026 and July 31, 2026, inclusive, for one night between August 1, 2026 and August 31, 2026, inclusive, for one night between September 1, 2026 and September 30, 2026, inclusive, for one night between October 1, 2026 and October 31, 2026, inclusive, for one night between November 1, 2026 and November 30, 2026, inclusive, and for up to and including four nights between December 1, 2026 and January 27, 2027, inclusive;

h. the Don Valley Parkway northbound, all lanes, between the Don Valley Parkway-F.G. Gardiner Expressway and 100 metres south of Eastern Avenue, from 11:00 p.m. of one day to 5:00 a.m. on the following day for one night between June 1, 2026 and June 30, 2026, inclusive, for up to and including two nights between July 1, 2026 and July 31, 2026, inclusive, for one night between August 1, 2026 and August 31, 2026, inclusive, for one night between September 1, 2026 and September 30, 2026, inclusive, for one night between October 1, 2026 and October 31, 2026, inclusive, for one night between November 1, 2026 and November 30, 2026, inclusive, and for up to and including four nights between December 1, 2026 and January 27, 2027, inclusive;

i. the Bay Street-F.G. Gardiner Expressway East on-ramp from 11:00 p.m. of one day to 5:00 a.m. of the following day for one night between June 1, 2026 and June 30, 2026, inclusive, for up to and including two nights between July 1, 2026 and July 31, 2026, inclusive, for one night between August 1, 2026 and August 31, 2026, inclusive, for one night between September 1, 2026 and September

30, 2026, inclusive, for one night between October 1, 2026 and October 31, 2026, inclusive, for one night between November 1, 2026 and November 30, 2026, inclusive, and for up to and including four nights between December 1, 2026 and January 27, 2027, inclusive; and

j. the Rees Street-F.G. Gardiner Expressway East on-ramp from 11:00 p.m. of one day to 5:00 a.m. of the following day for one night between June 1, 2026 and June 30, 2026, inclusive, for up to and including two nights between July 1, 2026 and July 31, 2026, inclusive, for one night between August 1, 2026 and August 31, 2026, inclusive, for one night between September 1, 2026 and September 30, 2026, inclusive, for one night between October 1, 2026 and October 31, 2026, inclusive, for one night between November 1, 2026 and November 30, 2026, inclusive, and for up to and including four nights between December 1, 2026 and January 27, 2027, inclusive,

and exempt the General Manager, Transportation Services, in carrying out this delegated authority from Section 937-5 of Chapter 937, that being the requirement to notify the local Ward Councillor of the pending closure and the requirement to report on the proposed closure if so required by the local Ward Councillor.

13. City Council amend City of Toronto Municipal Code Chapter 937, Temporary Closing of Highways, to delegate to the General Manager, Transportation Services, the authority to temporarily close to vehicular traffic:

a. the Don Roadway, northbound, between Lake Shore Boulevard East and the Don Valley Parkway, from 11:00 p.m. of one day to 5:00 a.m. on the following day for up to and including eight nights between July 1, 2023 and July 31, 2023, inclusive, to facilitate the installation of brackets and conduits on the south side of the existing Lower Don Bridge;

b. the Don Roadway, southbound, between the Don Valley Parkway and Lake Shore Boulevard East, from 11:00 p.m. of one day to 5:00 a.m. on the following day for up to and including eight nights between August 1, 2023 and August 31, 2023, inclusive, to facilitate the installation of brackets and conduits on the south side of the existing Lower Don Bridge;

c. the Don Roadway, southbound, between the Don Valley Parkway and Lake Shore Boulevard East, from 11:00 p.m. of one day to 5:00 a.m. on the following day for up to and including two nights between September 1, 2025 and September 30, 2025, inclusive, and for up and including four nights between February 1, 2026 and February 28, 2026, inclusive, to facilitate the removal of the median barrier and its reconstruction related to the Ontario Line Lower Don Bridge;

d. the Don Roadway, southbound, between the Don Valley Parkway and Lake Shore Boulevard East, from 11:00 p.m. of one day to 5:00 a.m. on the following day for up to and including four nights between September 1, 2025 and September 30, 2025, inclusive, for one night between December 1, 2026 and December 31, 2026, inclusive, and for up to and including three nights between

October 1, 2026 and January 31, 2027, inclusive, to facilitate the installation of a temporary falsework support, removal of temporary falsework support, removal of deck forming system and residual spot repairs related to the Ontario Line Lower Don Bridge;

e. the Don Roadway, northbound, between Lake Shore Boulevard East and the Don Valley Parkway, from 11:00 p.m. of one day to 5:00 a.m. on the following day for up to and including two nights between January 1, 2026 and January 31, 2026, inclusive, and for up to and including three nights between October 1, 2026 and January 31, 2027, inclusive, to facilitate the Self-propelled Modular Transporter staging, removal of the deck forming system and residual spot repairs related to the Ontario Line Lower Don Bridge;

f. the Don Roadway, northbound and southbound, between Lake Shore Boulevard East and the Don Valley Parkway, from 11:00 p.m. on one Friday evening to 5:00 a.m. of the following Monday morning for one weekend between January 1, 2026 and February 2, 2026 to facilitate the launch of the Ontario Line Lower Don Bridge;

g. the Don Roadway, southbound, between the Don Valley Parkway and Lake Shore Boulevard, from 11:00 p.m. of one day to 5:00 a.m. on the following day for one night between June 1, 2026 and June 30, 2026, inclusive, for up to and including two nights between July 1, 2026 and July 31, 2026, inclusive, for one night between August 1, 2026 and August 31, 2026, inclusive, for one night between September 1, 2026 and September 30, 2026, inclusive, for one night between October 1, 2026 and October 31, 2026, inclusive, for one night between November 1, 2026 and November 30, 2026, inclusive, and for up to and including four nights between December 1, 2026 and January 27, 2027, inclusive, to facilitate the tightening of bridge cables, removal of bridge arch bracing, installation of debris shield, bridge deck concrete placement, bridge railing curb placement, removal of debris shield and finishing of the bridge structure related to the Ontario Line Lower Don Bridge; and

h. the Don Roadway, northbound, between Lake Shore Boulevard and the Don Valley Parkway, from 11:00 p.m. of one day to 5:00 a.m. on the following day for one night between June 1, 2026 and June 30, 2026, for up to and including two nights between July 1, 2026 and July 31, 2026, inclusive, for one night between August 1, 2026 and August 31, 2026, inclusive, for one night between September 1, 2026 and September 30, 2026, inclusive, for one night between October 1, 2026 and October 31, 2026, inclusive, for one night between November 1, 2026 and November 30, 2026, inclusive, and for up to and including four nights between December 1, 2026 and January 27, 2027, inclusive, to facilitate the tightening of bridge cables, removal of bridge arch bracing, installation of debris shield, bridge deck concrete placement, bridge railing curb placement, removal of debris shield and finishing of the bridge structure related to the Ontario Line Lower Don Bridge,

and City Council exempt the General Manager, Transportation Services, in carrying out this delegated authority from Section 937-5 of Chapter 937, Temporary Closing of Metrolinx Ontario Line – Temporary Lane Closures on the Don Valley Parkway and F.G. Gardiner Expressway

Highways, that being the requirement to notify the local Ward Councillor of the pending closure and the requirement to report on the proposed closure if so requested by the local Ward Councillor.

14. City Council amend City of Toronto Municipal Code Chapter 27, Council Procedures, to provide that the current delegation to Community Council to temporarily close public lanes or public alleys, local roads, collector roads, and minor arterial roads, does not include closures delegated to the General Manager, Transportation Services, in carrying out the authority in Part 13 above.

15. City Council temporarily close the southbound outside lane and adjacent pavement shoulder on the Don Valley Parkway, between 400 metres north of the Leaside Bridge and 100 metres south of Beechwood Drive, from 11:00 p.m. of one day to 5:00 a.m. on the following day from December 1, 2023 to March 31, 2024, inclusive, in order to conduct retaining wall construction and storm sewer relocation related to the Ontario Line Don Valley Crossing.

16. City Council authorize the City Solicitor to introduce the necessary bills to give effect to City Council's decision and City Council authorize the City Solicitor to make any necessary clarifications, refinements, minor modifications, technical amendments, or by-law amendments as may be identified by the City Solicitor or General Manager, Transportation Services, in order to give effect to Parts 1 to 14, inclusive.

FINANCIAL IMPACT

There are no financial impacts associated with this report. The Chief Financial Officer and Treasurer has reviewed this report and agrees with the financial impact information.

DECISION HISTORY

In January 2020, City Council delegated to the General Manager, Transportation Services, the authority to temporarily close to pedestrian and vehicular traffic highways or portion of highways for a period up to and including 365 consecutive days, until December 31, 2030, with the exception of those highways listed in section 937-4 of Chapter 937, as required for the purpose of the construction of the Line 2 Scarborough Subway Extension and exempt the General Manager, Transportation Services, in carrying out this delegated authority from Section 937-5 of Chapter 937, that being the requirement to notify the local Ward Councillor of the pending closure and the requirement to report on the proposed closure if so requested by the local Ward Councillor.

Link: <https://secure.toronto.ca/council/agenda-item.do?item=2020.IE11.13>

In February 2021, City Council adopted, with amendments, IE19.10 Metrolinx Projects - Eglinton Crosstown West Extension, Yonge North Subway Extension and Ontario Line - Metrolinx Ontario Line – Temporary Lane Closures on the Don Valley Parkway and F.G. Gardiner Expressway

Temporary Delegation for Long-term Road Closures granting delegated authority to the General Manager, Transportation Services, to temporarily close pedestrian and vehicular traffic highways or portions of highways for the purpose of constructing the Eglinton Crosstown West Extension and Ontario Line, excluding its proposed above ground section, between the Don River and Gerrard Street for 365 days until December 31, 2030. Through the report, City Council also exempted the General Manager, Transportation Services, in carrying out this delegated authority from Section 937-5 of Chapter 937, that being the requirement to notify the local Ward Councillor of the pending closure and the requirement to report on the proposed closure if so requested by the local Ward Councillor.

Link: <https://secure.toronto.ca/council/agenda-item.do?item=2021.IE19.10>

In June 2022, City Council adopted, with amendments, EC33.1, Metrolinx Transit Expansion Projects – Second Quarter 2022, and delegated a temporary authority to the General Manager, Transportation Services, to temporarily close to pedestrians and vehicular traffic highways or portion of highways for a period up to and including 365 consecutive days but ending no later than December 31, 2026, inclusive, with the exception of those highways listed in Section 937-4 of Chapter 937, Temporary Closing of Highways, as required for the purpose of the construction of the Ontario Line Early Works in the Lakeshore East Joint Corridor and exempt the General Manager, Transportation Services, in carrying out this delegated authority from Section 937-5 of Chapter 937, that being the requirement to notify the local Ward Councillor of the pending closure and the requirement to report on the proposed closure if so requested by the local Ward Councillor.

COMMENTS

This report outlines the Metrolinx plans for constructing the Don Valley Crossing and Ontario Line (OL) Lower Don Bridge, two new grade-separated bridges along the OL route across the Don Valley Parkway. Figure 1 below shows the location of these new bridges along the OL route.

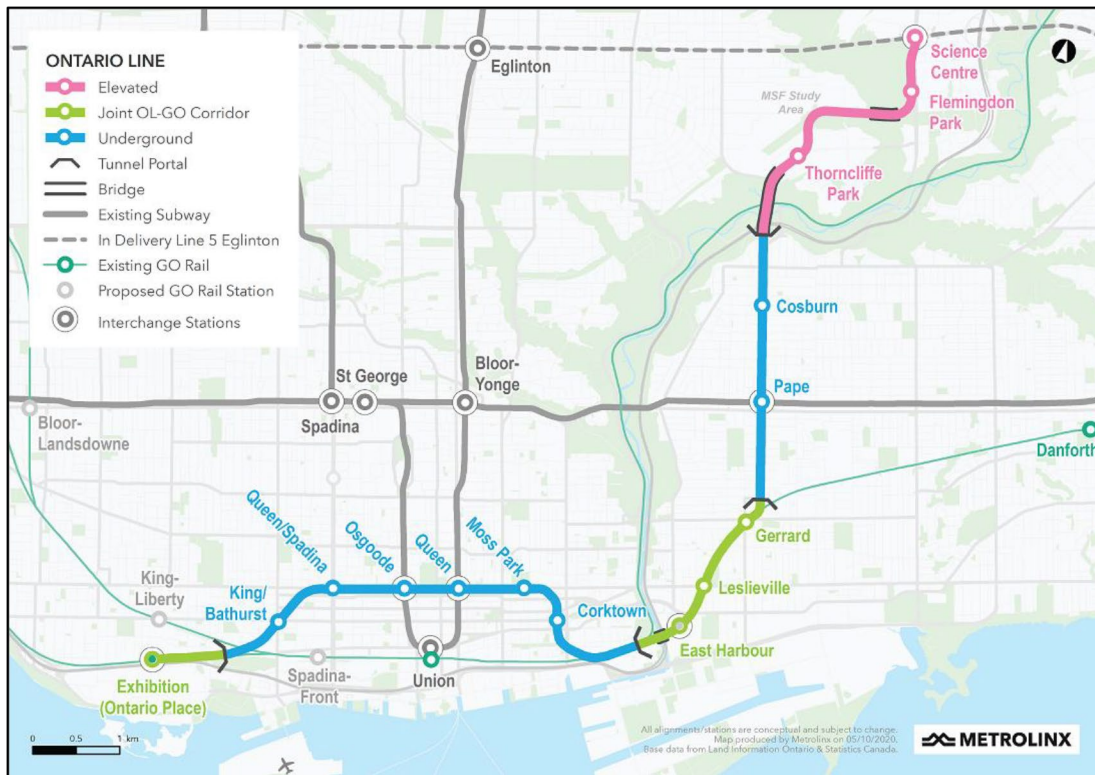


Figure 1 – Ontario Line Alignment and DVP Crossings

Source: Metrolinx

Metrolinx plans to deliver the Don Valley Crossing and OL Lower Don Bridge projects through separate contracts. The Don Valley Crossing project is currently in the project planning phase, with the bridge design advanced to sixty percent. Metrolinx has finalized the construction proposal for the advanced works including the temporary lane closures on the Don Valley Parkway to complete these works.

Temporary lane closures on the Don Valley Parkway require City Council approval. Consequently, this report provides information on the advanced works and associated lane closures on the Don Valley Parkway to complete these works. Additionally, the report includes information on the temporary lane closures required to complete construction of the Don Valley Crossing Bridge. However, this information is based on the sixty percent design and is subject to refinement as the design advances.

The OL Lower Don Bridge project is currently in the contractor procurement stage. Metrolinx has finalized the preliminary bridge design and determined the maximum number and duration of the temporary road closures on the Don Valley Parkway required to construct the bridge. Metrolinx has provided these maximum road closure requirements as project specifications to the bidders for their bridge design and construction proposal submissions. This report includes information on the Metrolinx-specified temporary lane closures for the bridge construction and, subject to City Council approval for these temporary road closures, aims to assure the bidders that Metrolinx-specified road closures on the Don Valley Parkway are feasible and construction work may proceed without further delay.

This report provides up-to-date information on the maximum temporary road/lane closures on the Don Valley Parkway required to construct the Don Valley Parkway and

OL Lower Don Bridge structures, although the timing of implementation of these road/lane closures is subject to modification as Metrolinx completes the contractor procurement. To address potential schedule modifications, and ensure construction activities are not unduly delayed while amendments to approved closure dates or timescales are sought, the report requests time periods with a temporary delegation of authority to the General Manager, Transportation Services, to temporarily close to vehicular traffic portions of the Don Valley Parkway and F.G. Gardiner Expressway as required for the purposes of construction of the Don Valley Crossing and OL Lower Don Bridge. This delegated authority is consistent with the delegated authority granted by City Council for other Metrolinx programs.

The following sections describe the planned construction activities at the Don Valley Crossing and OL Lower Don Bridge sites and associated temporary lane closures on the Don Valley Parkway to facilitate these activities:

Don Valley Crossing

Metrolinx plans to construct the Don Valley Crossing using cast-in-place girders. The Bridge will carry the Ontario Line over the Don Valley Parkway and provide a transition to the underground section of the OL route through the Minton Place Tunnel Portal. Figure 2 shows the rendering of the Don Valley Crossing.

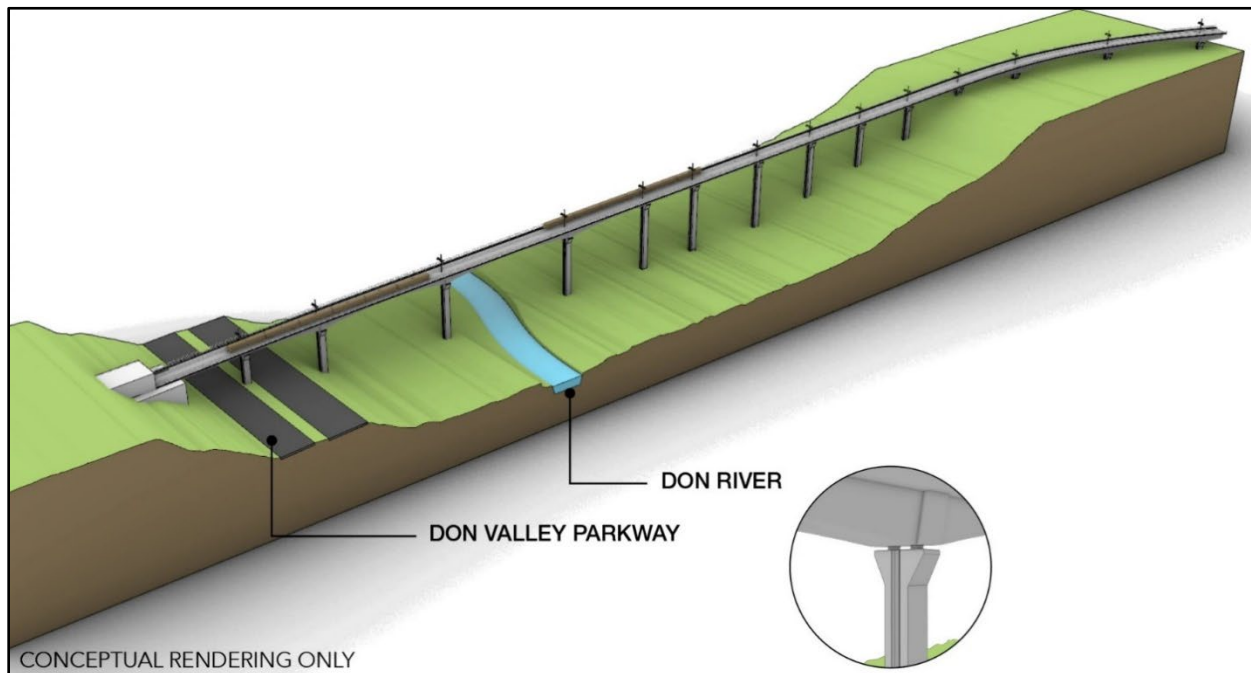


Figure 2 – Don Valley Crossing
(Artist's Rendering – Only for Illustration)

Source: Metrolinx

The major construction activities at the Don Valley Crossing will include the following:

Advanced Works

- Test pit investigation along the southbound traffic lanes of the Don Valley Parkway to confirm below-ground utility conflicts with the new infrastructure.
- Geotechnical investigation, instrumentation and measurements at the existing retaining wall along the northbound lanes of the Don Valley Parkway.
- Sanitary sewer relocation and support-of-excavation retaining wall construction.
- Slope stabilization at the Minton Place Tunnel Portal.

Structural Works

- Installation of a temporary median support.
- Construction of the Don Valley Crossing superstructure.
- Finishing of the Don Valley Crossing bridge structure

The above-listed construction activities and the associated temporary lane closures are described below:

Advanced Works

As part of the advanced works, Metrolinx will need to relocate a large sanitary sewer with a diameter of 1.5 metres, which conflicts with one of the bridge piers for the Don Valley Crossing. Additionally, a support-of-excavation retaining wall will be constructed along the southbound traffic lanes of the Don Valley Parkway to provide ground stability and safety to the travelling public during construction.

Test Pit Investigation

Before constructing the retaining wall, Metrolinx will perform a test pit investigation, to confirm the location of a RESCU cable, which is expected to conflict with a proposed retaining wall.

Metrolinx will complete this investigation using a temporary closure of the southbound outside lane and pavement shoulder on the Don Valley Parkway, from 11 p.m. to 5 a.m. over three nights between June 1, 2023 and June 12, 2023. The temporary lane closure will extend from a point 400 metres north of the Leaside Bridge and a point 100 metres south of the Beechwood Drive, and will be utilized to accommodate the hydro-vac machine and backfill truck required for the work.

With the temporary nightly lane closure of the southbound outside lane, the adjacent southbound middle and inside lanes on the Don Valley Parkway within the work zone will remain available to traffic. There will be no lane closures in the northbound direction. Figure 3 illustrates the test pit investigation work zone area on the Don Valley Parkway.

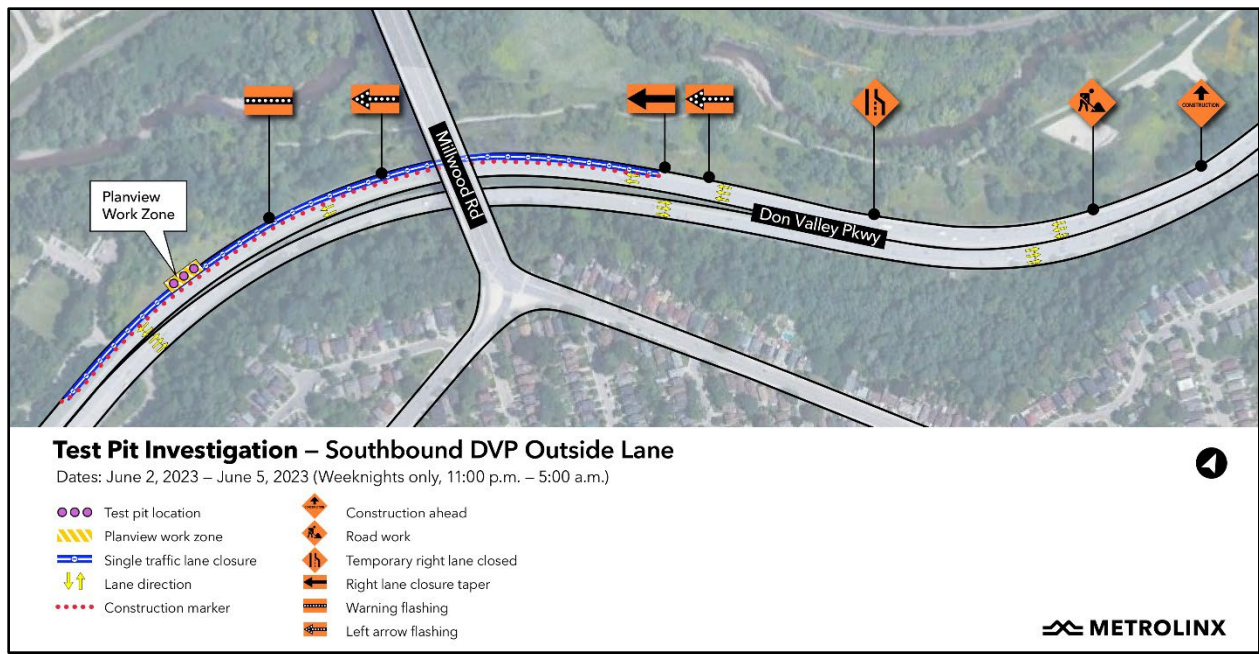


Figure 3 – Don Valley Crossing Test Pit Investigation

Source: Metrolinx

Metrolinx anticipates the test pit investigation to take place sometime between June 1 and June 12, 2023 from 11:00 pm of one day to 5:00 on the following day for three nights. Currently the schedule, which may change, provides for the work to be conducted on the following dates:

- 11 p.m. on Friday, June 9, 2023 to 5 a.m. on Saturday, June 10, 2023
- 11 p.m. on Saturday, June 10, 2023 to 5 a.m. on Sunday, June 11, 2023
- 11 p.m. on Sunday, June 11, 2023 to 5 a.m. on Monday, June 12, 2023

Geotechnical Field Investigation

Apart from the test pit investigation, Metrolinx will perform a geotechnical investigation on the existing retaining wall on the east side of the Don Valley Parkway, south of the Leaside Bridge. This assessment will evaluate the performance of the retaining wall, specifically its foundations and overall stability. To support the investigation, Metrolinx will install geotechnical instrumentation and perform measurement and monitoring of potential displacement of soil and rock. This data will be utilized to advance the bridge design for the Don Valley Crossing and Minton Place Tunnel Portal. Additionally, Metrolinx will perform pavement boreholes along the shoulders of the Don Valley Parkway to evaluate its ability to support additional temporary traffic loads in case of any traffic lane realignments during the construction of the Don Valley Crossing Bridge.

The scope of the geotechnical investigation includes a site visit, nine deep boreholes, ten shallow pavement boreholes, eight pavement coreholes, installation of inclinometers and measurements of the slope displacement at the existing retaining wall, and installation of a ground water monitoring well along the southbound outside lane pavement shoulder. Figure 4 shows the locations of the geotechnical investigation work.

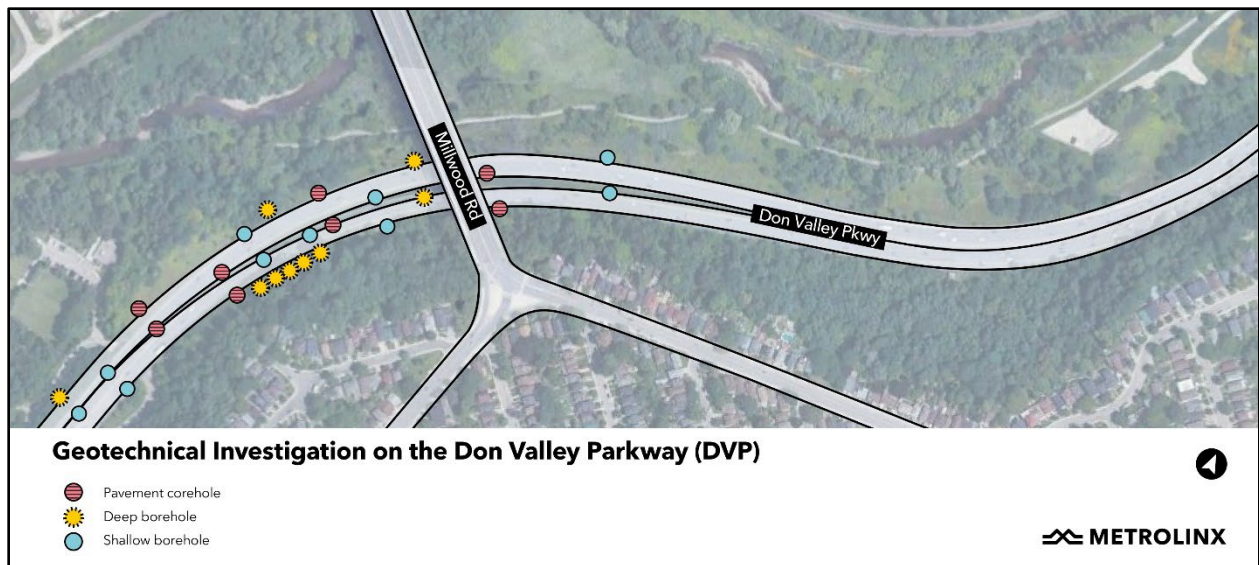


Figure 4 – Geotechnical Investigation Locations

Source: Metrolinx

Metrolinx will require lane closures for three specific tasks, initial site visits to confirm details, for the geotechnical investigations themselves and then for monitoring and measurement.

Site Visit:

Metrolinx will require temporary closures of the northbound and southbound outside and inside lanes over one night between May 15, 2023 and May 31, 2023.

During the site visit, Metrolinx will temporarily close the northbound and southbound outside lanes from 11 p.m. of one day to 2 a.m. on the following day followed by the temporary closure of the northbound and southbound inside lanes from 2 a.m. of one day to 5 a.m. on the same day. During the directional lane closures, two northbound and two southbound lanes will remain available for traffic.

Figure 5 shows the current Metrolinx-proposed dates, which dates are subject to change within the above specified time period, for the temporary nightly lane closures and Figures 6 and 7 illustrate the temporary lane closures.

Road	Lane	Limit 1	Limit 2	Duration
DVP	NB outside	600m south of Beechwood Dr.	350m north of Leaside Bridge	11 p.m. - 2 a.m. (May 24-May25, 2023)
DVP	SB outside	450m north of Leaside Bridge	300m south of Beechwood Dr.	11 p.m. - 2 a.m. (May 24-May25, 2023)
DVP	NB inside	600m south of Beechwood Dr	350m north of Leaside Bridge	2 a.m. - 5 a.m. (May25, 2023)
DVP	SB inside	450m north of Leaside Bridge	350m north of Leaside Bridge	2 a.m. - 5 a.m. (May25, 2023)

Figure 5 – Temporary Lane Closures for the Site Visit

Source: Metrolinx

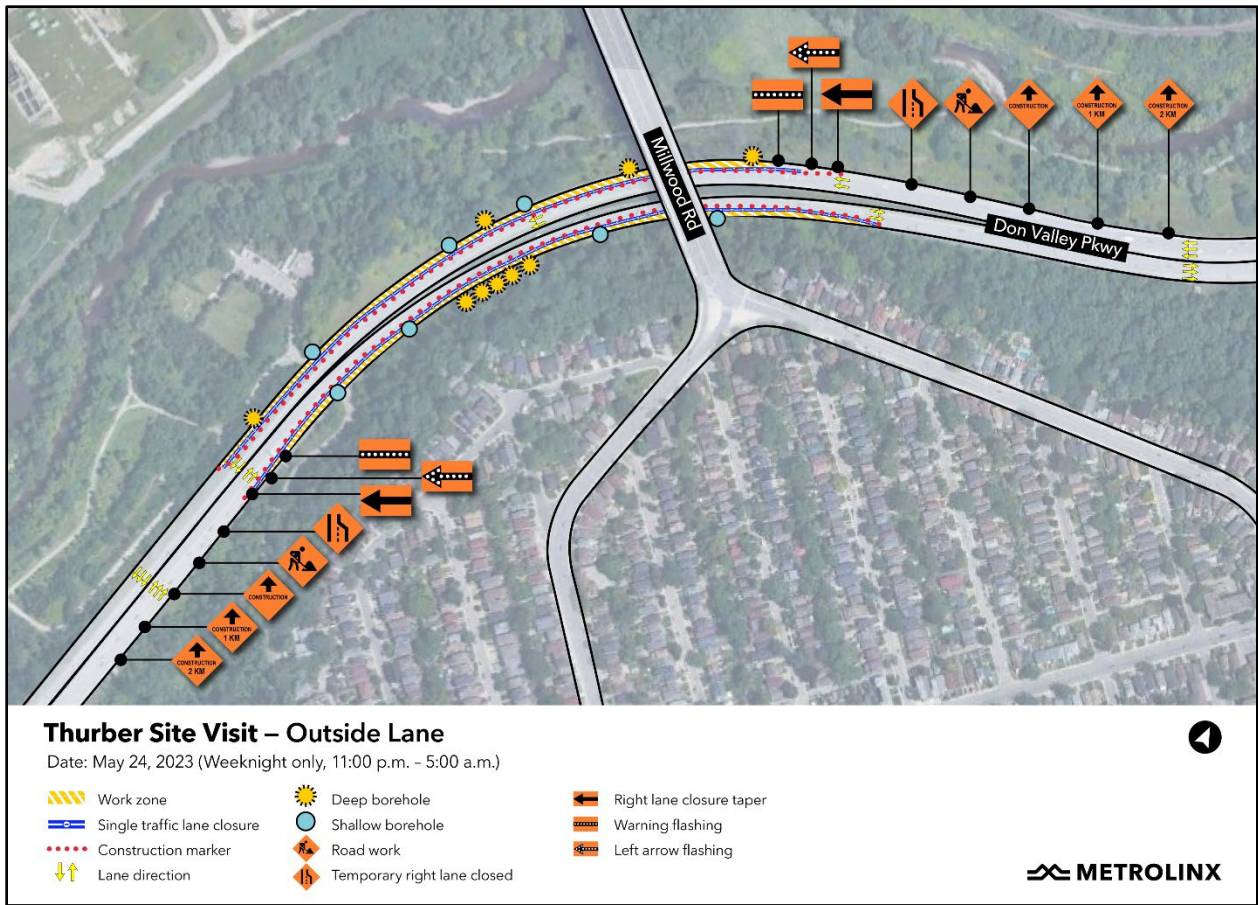


Figure 6 – Geotechnical Site Visit (Outside Lane Occupation)

Source: Metrolinx



Figure 7 – Geotechnical Site Visit (Inside Lane Occupation)

Source: Metrolinx

Geotechnical Borehole and Instrumentation Work:

Metrolinx will require temporary closures of the northbound and southbound lanes to perform geotechnical borehole and instrumentation work. The temporary lane closures will be implemented for various time frames from 11 p.m. of one day to 5 a.m. on the following day between June 12, 2023 and September 1, 2023. Figure 8 shows the details of the temporary lane closures and Figures 9 and 10 illustrate the lane closures.

Metrolinx will not be permitted to close more than one lane per direction per night to perform this work. With the single lane closure in place, two lanes per direction will remain available to the travelling public in the work zone.

Road	Lane	Limit 1	Limit 2	Duration
DVP	NB outside	600m south of Beechwood Dr.	350m north of Leaside Bridge	50 nights (11 p.m. - 5 a.m.; June 12-Sept. 1, 2023)
DVP	SB outside	450m north of Leaside Bridge	300m south of Beechwood Dr.	35 nights (11 p.m. - 5 a.m.; June 12-Sept. 1, 2023)
DVP	NB inside	600m south of Beechwood Dr	350m north of Leaside Bridge	8 nights (11 p.m. - 5 a.m.; June 12-Sept. 1, 2023)
DVP	SB inside	450m north of Leaside Bridge	350m north of Leaside Bridge	13 nights (11 p.m. - 5 a.m.; June 12-Sept. 1, 2023)

Figure 8 – Temporary Lane Closures for Geotechnical Investigation

Source: Metrolinx

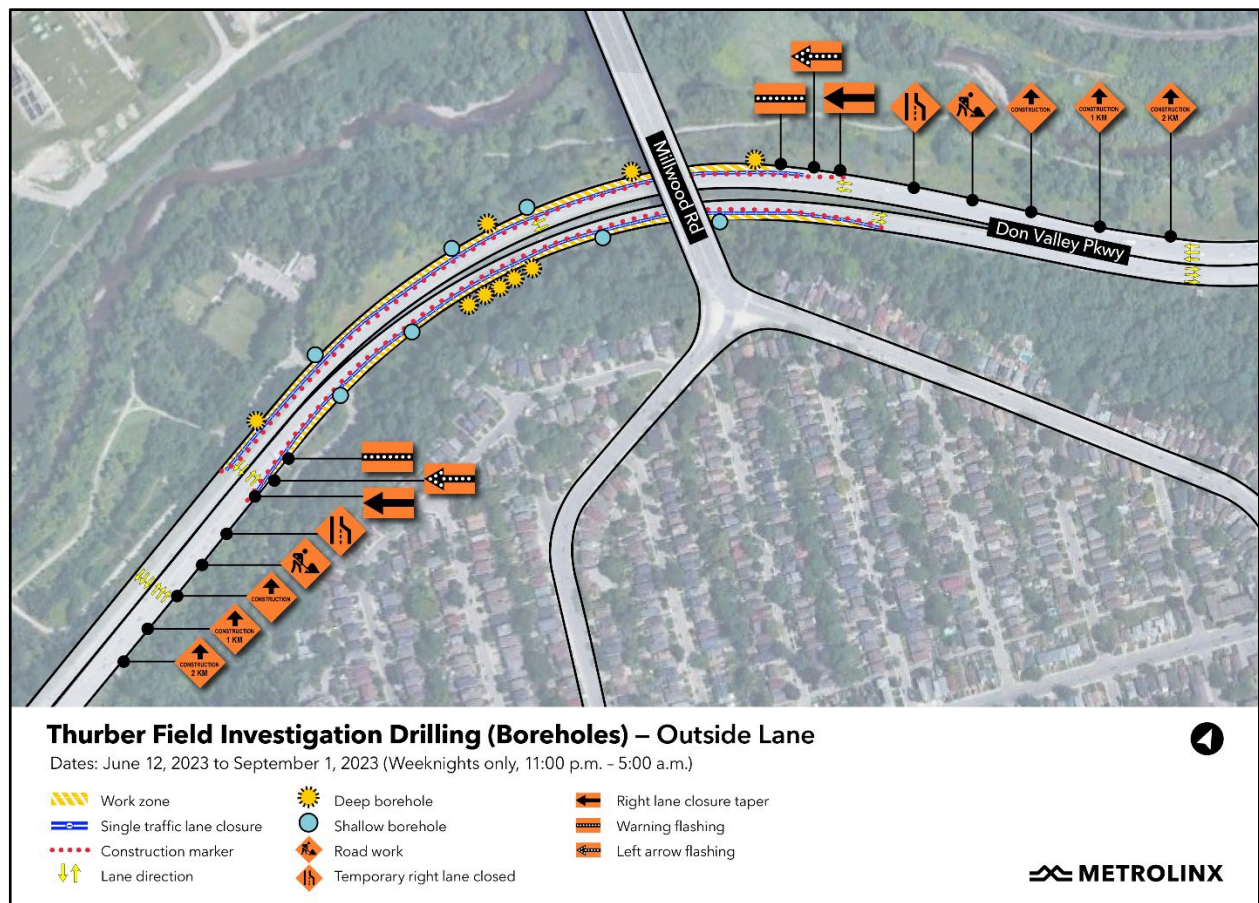


Figure 9 – Geotechnical Investigation (Outside Lane Occupation)

Source: Metrolinx

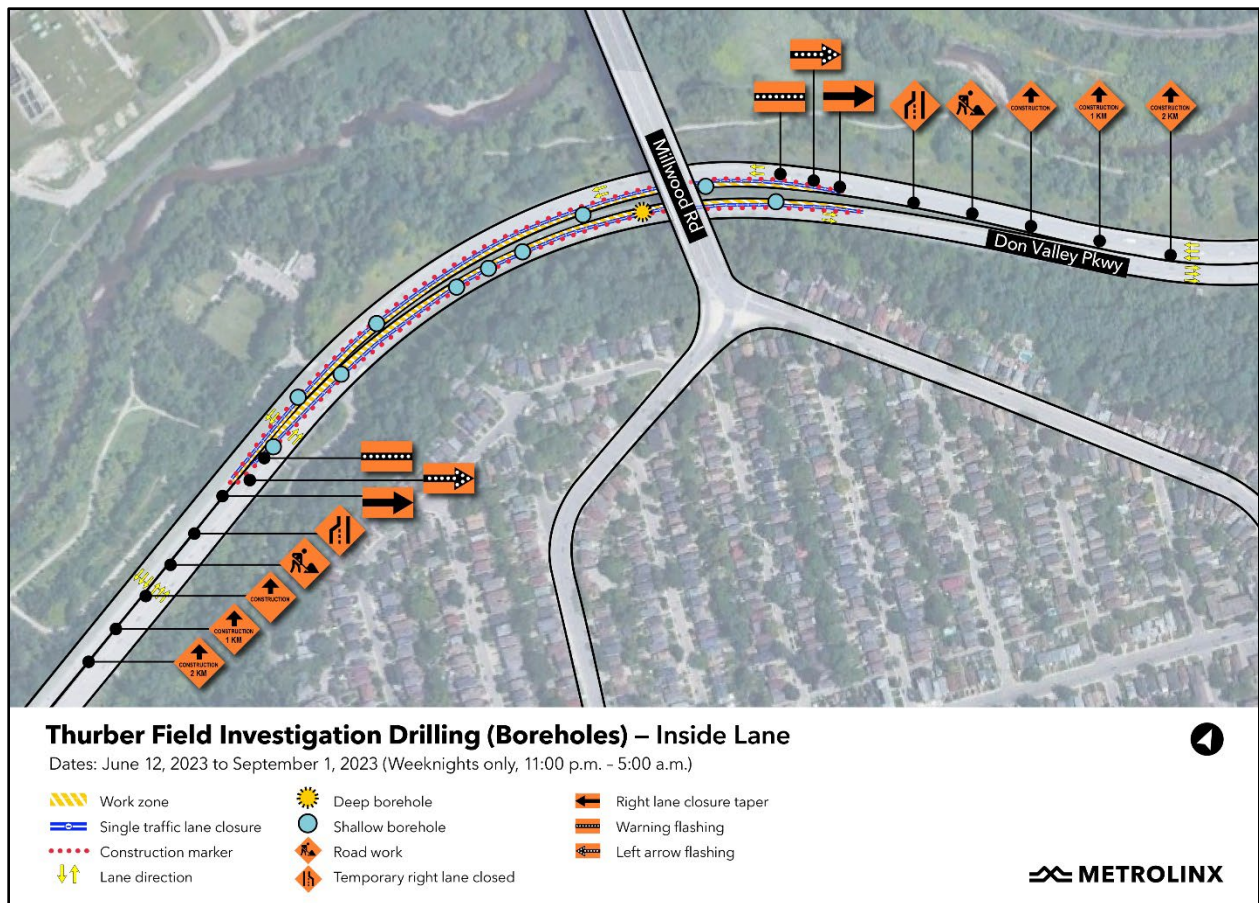


Figure 10 – Geotechnical Investigation (Inside Lane Occupation)

Source: Metrolinx

Monitoring and Measurement:

Metrolinx will perform geotechnical monitoring and measurement related work using temporary closures of the northbound and southbound outside lanes on the Don Valley Parkway from 11 p.m. of one day to 5 a.m. on the following day over one night in each of the months of September 2023, November 2023, April 2024 and July 2024. Figure 11 shows the Metrolinx-proposed dates within the above months, which dates are subject to change within these specified months, for the temporary nightly lane closures and Figure 12 illustrates the lane closures.

With the temporary closures of the northbound and southbound outside lanes in place, two lanes in each direction will remain available to the motorists in the work zone.

Road	Lane	Limit 1	Limit 2	Duration
DVP	NB outside	600m south of Beechwood Dr.	350m north of Leaside Bridge	11 p.m. - 5 a.m. (Sept. 12, 2023; Nov. 27, 2023; April 1, 2024; July 29, 2024)
DVP	SB outside	450m north of Leaside Bridge	300m south of Beechwood Dr.	11 p.m. - 5 a.m. (Sept. 12, 2023; Nov. 27, 2023; April 1, 2024; July 29, 2024)
DVP	NB outside	600m south of Beechwood Dr.	350m north of Leaside Bridge	11 p.m. - 5 a.m. (Sept. 12, 2023; Nov. 27, 2023; April 1, 2024; July 29, 2024)
DVP	SB outside	450m north of Leaside Bridge	350m north of Leaside Bridge	11 p.m. - 5 a.m. (Sept. 12, 2023; Nov. 27, 2023; April 1, 2024; July 29, 2024)

Figure 11 – Temporary Lane Closures for Geotechnical Monitoring

Source: Metrolinx

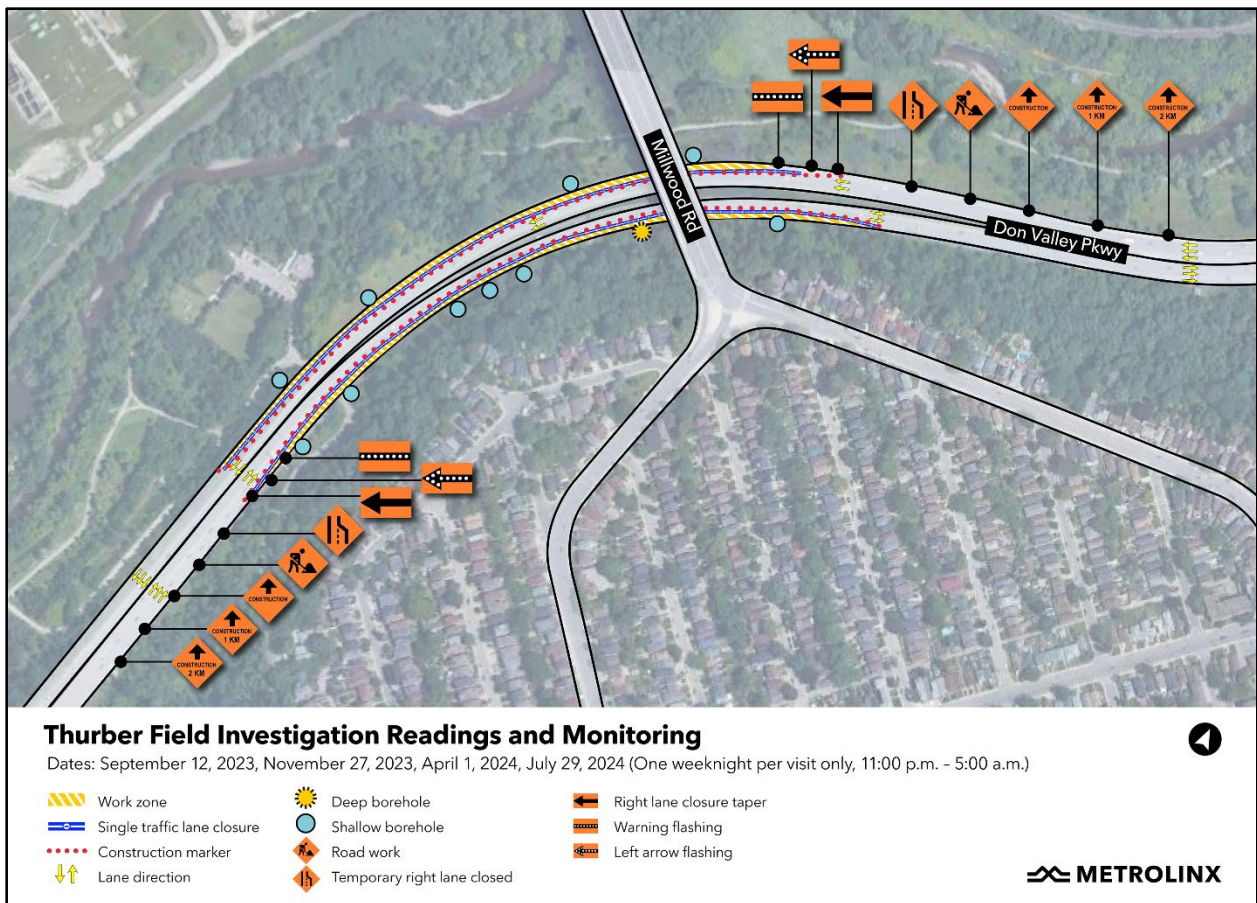


Figure 12 – Geotechnical Monitoring and Measurement

Source: Metrolinx

Retaining Wall Construction and Storm Sewer Relocation

After the geotechnical field investigation, the Metrolinx contractor will construct the retaining wall and relocate the sanitary sewer along the southbound traffic lanes on the Don Valley Parkway. This construction work will involve heavy equipment such as auger-boring machine and multiple trucks with material deliveries.

To ensure safe and efficient construction, Metrolinx will need to temporarily close the southbound outside lane and adjacent pavement shoulder on the Don Valley Parkway, between 400 metres north of the Leaside Bridge and 100 metres south of Beechwood Drive. This temporary lane closure would be implemented from 11 p.m. of one day to 5 a.m. on the following day for 122 nights from December 1, 2023 to March 31, 2024, inclusive.

With the temporary closure of the southbound outside lane, two southbound lanes will remain available for the motorists in the work zone. There will be no lane closures in the northbound direction.

Slope Stabilization for Minton Tunnel Portal

Before starting the construction of the Minton Place Tunnel Portal, the Metrolinx contractor will stabilize the embankment slope on the east side of the Don Valley Parkway south of the Millwood Road Bridge to ensure public safety and prevent any ground movements during the construction work. The stabilization work will include clearing, grubbing, erosion control, drilling, grouting, and installing of anchor blocks and piles. A temporary safety system will also be installed to prevent debris from falling onto the Don Valley Parkway.

Metrolinx has scheduled the installation of the temporary slope stabilization system in April 2024 and the removal in June 2027. As a result, Metrolinx requires a temporary lane closure of the northbound outside lane and adjacent pavement shoulder on the Don Valley Parkway, between 600 metres south of Beechwood Drive and 350 metres north of the Leaside Bridge, from 11 p.m. of one day to 5 a.m. on the following day for 10 nights between April 1, 2024 and April 30, 2024, inclusive, for the installation of the temporary slope safety system.

Similarly, Metrolinx require a temporary lane closure of the northbound outside lane and adjacent pavement shoulder on the Don Valley Parkway, between 600 metres south of Beechwood Drive and 350 metres north of the Leaside Bridge, from 11 p.m. of one day to 5 a.m. on the following day for 10 nights between June 1, 2027 and June 30, 2027, inclusive, for the removal of the temporary slope safety system.

With the temporary closure of the northbound outside lane, two northbound lanes will remain available for the motorists in the work zone. There will be no lane closures in the southbound direction.

Don Valley Crossing Bridge Construction

Prior to constructing the Don Valley Crossing Bridge, Metrolinx will construct a temporary steel support structure with concrete footing in the median of the Don Valley Parkway. This temporary structure will support the Don Valley Crossing bridge structure during construction and will be removed upon completion of the construction. Figure 13 illustrates the estimated temporary nightly lane closures required to complete the installation of the median support in February 2027 and the removal of the median support in September 2027.

Construction Stage	Northbound	Southbound	
	1 Lane	1 Lane	2 Lanes
1	-	3	-
2	-	-	2
3	-	2	-
4	2	-	2
5	5	-	5
6	9	-	9
Total	16	5	18

Figure 13 – Estimated Temporary Nightly Lane Closures for Temporary Median Support

Source: Metrolinx

Metrolinx will construct the Don Valley Crossing Bridge using cast-in-place concrete box girder segments in a construction sequence involving a form traveller, reinforcement of ducts, concrete pouring, curing and stressing of the ducts to create a monolithic structure. The construction of the bridge will occur in two stages, with Stage 1 involving the erection of the bridge structure and Stage 2 involving finishing the bridge structure. Based on the currently available sixty percent design, Metrolinx has estimated the number and timing of the temporary nightly lane closures on the Don Valley Parkway required to complete the construction of the bridge, shown on Figure 14.

Construction Stage	Number of Lanes Closed	Timing	Estimated Duration
Bridge Construction	1 Southbound	March 2027	8 nights
	2 Southbound	March 2027	4 nights
	1 Southbound	April 2027	4 nights
	2 Southbound	April 2027	14 nights
	1 Southbound	May 2027	2 nights
	1 Northbound	May 2027	8 nights
	2 Northbound	June 2027	4 nights
	1 Northbound	June 2027	8 nights
	2 Northbound	July 2027	10 nights
	1 Northbound	August 2027	4 nights
	1 Northbound	September 2027	2 nights
Finishing of Bridge Structure	2 Southbound	March – April 2028	4 nights
	2 Northbound	March – April 2028	4 nights

Figure 14 – Estimated Temporary Nightly Lane Closures for the Don Valley Crossing Source: Metrolinx

As mentioned earlier in the report, the temporary lane closures shown in Figures 13 and 14 are subject to modification as the bridge design advances further. An update on the final temporary nightly lane closure requirements will be provided in a future staff report.

Ontario Line Lower Don Bridge

Metrolinx will construct the OL Lower Don Bridge as a steel arch bridge, which will be located just north of the existing Lower Don Rail Bridge. Figure 15 shows a rendering of the new OL Bridge.



Figure 15 – Ontario Line Bridge North of the Lower Don Bridge (Artist's Rendering - Only for Illustration) Source: Metrolinx

Metrolinx has considered using the partial launch method for bridge construction to minimize the impact on traffic flow and reduce the construction time. This method involves preassembling the arch bridge structure adjacent to the Don Valley Parkway and then launching it across the Don Valley Parkway using specialized self-propelled modular transporters (SPMTs). The tightening of bridge cables, construction of the bridge deck and removal of the temporary supports will follow the bridge launch.

The major construction activities at the OL Lower Don Bridge requiring temporary road closures on the Don Valley Parkway, F.G. Gardiner Expressway and Don Roadway and will include the following:

Advanced Work

- Installation of brackets on the south side of the existing Lower Don Rail Bridge.

Structural Work

- Removal of the median barrier on the Don Valley Parkway
- Installation of temporary support along the south side of the Don Valley Parkway
- Self-propelled modular transporter (SPMT) staging on the east side of the Don Valley Parkway
- Launch of partial arch section of the bridge across the Don Valley Parkway
- Reconstruction of permanent median barrier on the Don Valley Parkway
- Tightening of bridge cables
- Removal of temporary bridge arch bracing
- Installation of temporary debris shield
- Bridge deck concrete placement
- Bridge railing concrete curb placement
- Removal of the temporary debris shield
- Removal of deck forming system
- Removal of temporary support adjacent to the southbound Don Valley Parkway
- Residual spot repairs and final adjustments to the bridge cables
- Finishing off the Ontario Line Lower Don Bridge structure

Advanced Works

In advance of constructing the OL Lower Don Bridge, Metrolinx will install brackets and conduits on the south side of the existing Lower Don Bridge to accommodate rail-related fibre optic cables. This work will be performed in stages with temporary sequential closures of the northbound and southbound outside and inside lanes on the Don Valley Parkway during nighttime hours (11 p.m. to 5 a.m.) between July 1, 2023 and August 31, 2023.

The temporary nightly lane closures on the Don Valley Parkway will extend to the F.G. Gardiner Expressway and Don Roadway. Temporary lane closures on the F.G. Gardiner Expressway will be required to accommodate the merging and termination tapers. Additionally, temporary directional lane closures on Don Roadway will be

required to prevent traffic movements between Lake Shore Boulevard East and the closed portion of the Don Valley Roadway.

During Stage 1 (July 1, 2023 to July 31, 2023), work will be performed over the northbound middle, outside and southbound outside lanes on the Don Valley Parkway. With the temporary nightly lane closures in place, northbound and southbound traffic on the Don Valley Parkway will be maintained on the inside lanes.

The temporary nightly closure of the northbound middle and outside lanes on the Don Valley Parkway will prohibit northbound traffic movements from Don Roadway, resulting in the temporary nightly closure of Don Roadway northbound, between Lake Shore Boulevard East and the Don Valley Parkway. Metrolinx will install advanced advisory signage along Lake Shore Boulevard East to inform motorists of the temporary closures. Eastbound and westbound motorists on Lake Shore Boulevard East will be able to connect with the Don Valley Parkway northbound via Carlaw Avenue, Eastern Avenue, Broadview Avenue and Queen Street.

Additionally, a portion of the south-to-westbound outside lane on the Don Valley Parkway-F.G. Gardiner Expressway on-ramp will be closed to accommodate the termination taper of the southbound outside lane closure on the Don Valley Parkway. Traffic will be maintained on the available adjacent south-to-westbound inside lane.

During Stage 2 (August 1, 2023 to August 31, 2023), work will be performed over the northbound inside and southbound inside lanes on the Don Valley Parkway. With the temporary nightly lane closures in place, northbound and southbound traffic on the Don Valley Parkway will be maintained on the outside lanes.

The temporary closure of the southbound inside lane will restrict vehicular movements to Don Roadway southbound and Lake Shore Boulevard East, resulting in temporary nightly closure of Don Roadway southbound, between the Don Valley Parkway and Lake Shore Boulevard East. The southbound motorists on the Don Valley Parkway destined to Don Roadway southbound and Lake Shore Boulevard East will detour via Eastern Avenue, Cherry Street and Lakeshore Boulevard East. Alternatively, southbound motorists may continue their journey along the F.G. Gardiner Expressway and detour via Yonge Street, Queens Quay East and Lake Shore Boulevard East.

Additionally, a portion of the temporary closure of the south-to-westbound inside lane on the Don Valley Parkway-F.G. Gardiner Expressway on-ramp will be closed to accommodate the termination taper of the southbound inside lane closure on the Don Valley Parkway. Traffic will be maintained on the available adjacent south-to-westbound outside lane.

Metrolinx will install advanced advisory signage on the Don Valley Parkway, F.G. Gardiner Expressway and Lake Shore Boulevard East to inform motorists of the temporary nightly lane closures. Figure 16 shows the details of the temporary lane closures with Figures 17 and 18 illustrates the temporary closures on the Don Valley Parkway, F.G. Gardiner Expressway and Don Roadway.

Road	Lane	Limit 1	Limit 2	Duration
DVP	SB outside	20m north of Eastern Ave.	DVP-Gardiner on-ramp	Stage 1-8 nights
DVP-Gardiner On-ramp	SB-to-WB Outside	DVP	150m south	Stage 1-8 nights
Gardiner	EB outside	Parliament St.	DVP-Gardiner off-ramp	Stage 1-8 nights
DVP-Gardiner off-ramp	EB-to-NB outside	Gardiner	DVP	Stage 1-8 nights
DVP	NB middle	DVP-Gardiner off-ramp	200m south of Eastern Ave.	Stage 1-8 nights
DVP	NB outside	Don Roadway	100m south of Eastern Ave.	Stage 1-8 nights
Don Roadway	NB	Lake Shore Blvd. East	DVP	Stage 1-8 nights
DVP	SB Inside	20m north of Eastern Ave.	DVP-Gardiner on-ramp	Stage 2-8 nights
DVP-Gardiner on-ramp	SB-to-WB inside	DVP	150m south	Stage 2-8 nights
Don Roadway	SB	DVP	Lake Shore Blvd. East	Stage 2-8 nights
Gardiner	EB inside	Parliament St.	DVP-Gardiner off-ramp	Stage 2-8 nights
DVP-Gardiner off-ramp	EB-to-NB inside	Gardiner	DVP	Stage 2-8 nights
DVP	NB inside	DVP-Gardiner off-ramp	200m south of Eastern Ave.	Stage 2-8 nights

Figure 16 – Temporary Lane Closures for Installation of Brackets

Source: Metrolinx



Stage 1: East Harbour Station Advanced Works to Install Brackets for Fibre Optics Cable Outside Lane Night-time Closure

July - August, 2023



-  Work zone
-  Lane closure



Figure 17 – Advanced Works – Installation of Brackets

Source: Metrolinx



Stage 2: East Harbour Station Advanced Works to Install Brackets for Fibre Optics Cable Inside Lane Night-time Closure



July - August, 2023



-  Work zone
-  Lane closure



Figure 18 – Advanced Works – Installation of Brackets

Source: Metrolinx

Structural Work

Removal of Median Barrier

Metrolinx will remove a section of the median concrete barrier, as show in Figure 19, to create a clear path for the Self-propelled Modular Transporters during the bridge launch operation. The removed portion of the median concrete barrier will be replaced with a temporary barrier.

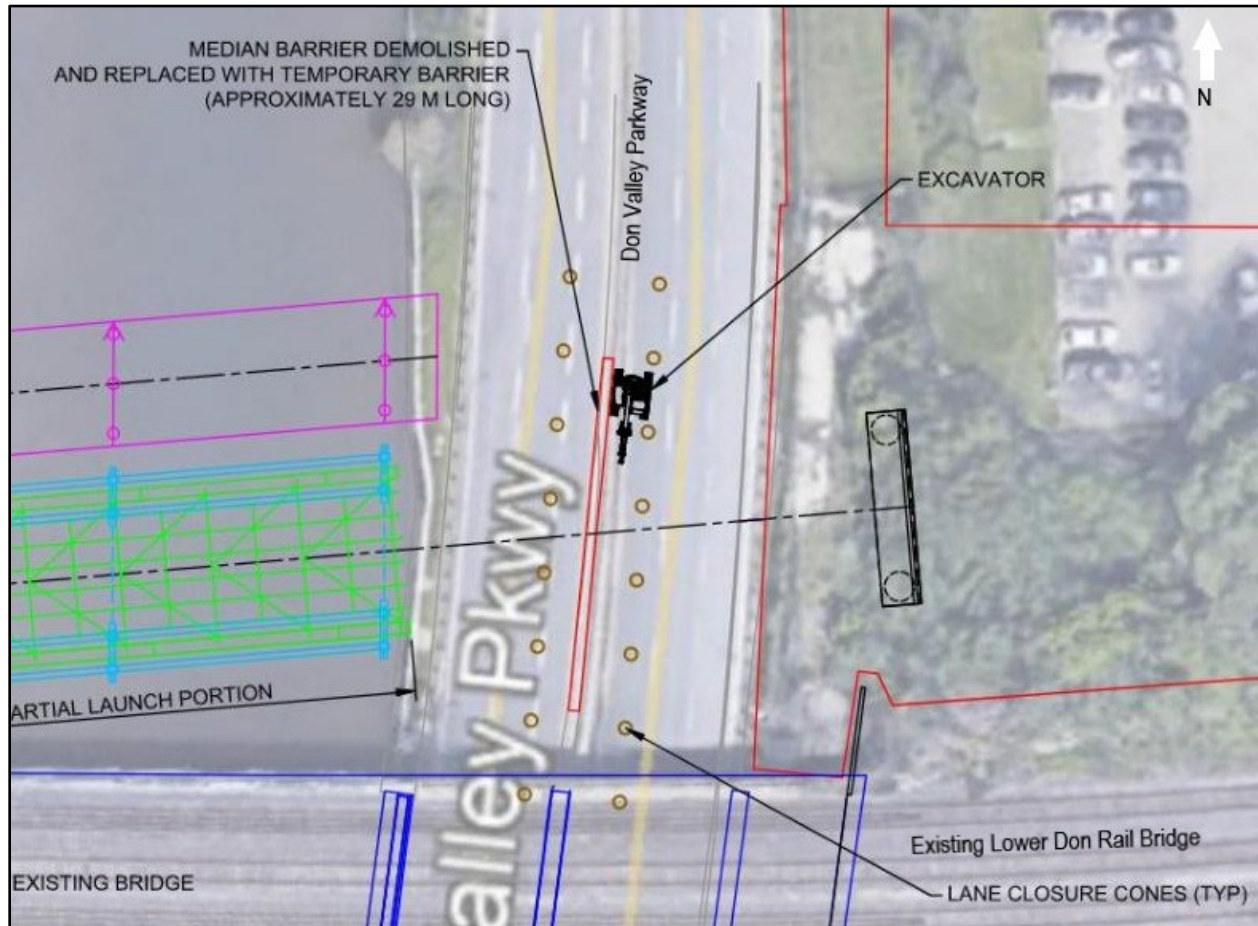


Figure 19 – Median Barrier Removal

Source: Metrolinx

Metrolinx will perform the work using temporary nightly closures of the northbound inside and southbound inside lanes on the Don Valley Parkway. The temporary lane closures will be implemented from 11 p.m. of one day to 5 a.m. on the following day over two nights between September 1, 2025 and September 30, 2025.

The temporary lane closures on the Don Valley Parkway will extend to the F.G Gardiner Expressway and Don Roadway. A portion of the south-to-westbound lane of the Don Valley Parkway-F.G. Gardiner Expressway will be temporarily closed to accommodate the termination taper of the southbound inside lane closure on the Don Valley Parkway. Traffic will be maintained on the remaining available adjacent south-to-westbound lane.

Additionally, the temporary closure of the southbound inside lane on the Don Valley Parkway will restrict vehicular access to Don Roadway southbound, between the Don Valley Parkway and Lake Shore Boulevard East. Southbound motorists on the Don Valley Parkway destined to Don Roadway southbound and Lake Shore Boulevard East will detour via Eastern Avenue, Cherry Street and Lakeshore Boulevard East. Alternatively, southbound motorists may continue their journey along the F.G. Gardiner Expressway and detour via Yonge Street, Queens Quay East and Lake Shore Boulevard East.

Metrolinx will install advanced advisory signage along the Don Valley Parkway, F.G. Gardiner Expressway and Lake Shore Boulevard East to inform motorists of the temporary nightly lane closures. Figure 20 shows the details of the temporary lane closures.

Road	Lane	Limit 1	Limit 2	Duration
Gardiner	EB inside	Parliament St.	DVP-Gardiner off-ramp	2 nights (Sept. 1-Sept. 30, 2025)
DVP-Gardiner off-ramp	EB-to-NB inside	Gardiner	DVP	2 nights (Sept. 1-Sept. 30, 2025)
DVP	NB inside	DVP-Gardiner off-ramp	200m south of Eastern Ave.	2 nights (Sept. 1-Sept. 30, 2025)
DVP	SB Inside	100m north of Eastern Ave.	DVP-Gardiner on-ramp	2 nights (Sept. 1-Sept. 30, 2025)
DVP-Gardiner on-ramp	SB-to-WB inside	DVP	150m south	2 nights (Sept. 1-Sept. 30, 2025)
Don Roadway	SB	DVP	Lake Shore Blvd. East	2 nights (Sept. 1-Sept. 30, 2025)

Figure 20 – Temporary Lane Closures for Median Barrier Removal

Source: Metrolinx

Installation of Temporary Falsework Support

Prior to assembling the steel structure of the OL Lower Don Bridge, Metrolinx will install two temporary falsework systems in the Don River. Additionally, a temporary trestle will be constructed across the Don River to enable the assembly of the steel arch structure over the falsework systems. One of the falsework supports will be situated in close proximity to the southbound traffic lanes of the Don Valley Parkway, as shown in Figure 21. Installing the falsework support will require removing the existing guiderail and replacement with a temporary concrete barrier after the installation.

Metrolinx will perform this work using temporary nightly full closures of the southbound traffic lanes on the Don Valley Parkway. The temporary lane closures will be implemented from 11 p.m. of one day to 5 a.m. on the following day over four nights between September 1, 2025 and September 30, 2025. Figure 22 shows the details of the temporary lane closures.

The temporary nightly full closure of the southbound lanes on the Don Valley Parkway will restrict vehicular access to the F.G. Gardiner Expressway westbound and Don Roadway southbound. The southbound motorists will exit the Don Valley Parkway at Eastern Avenue and continue westbound on the road network to connect the F.G. Gardiner Expressway westbound using the Lower Jarvis Street on-ramp or other subsequent on-ramps. Similarly, the motorists destined to Lake Shore Boulevard East and Don Roadway may detour via Eastern Avenue, Cherry Street and Lakeshore Boulevard East.

Metrolinx will install advanced advisory signage to inform the motorists of the temporary nightly full closure of the southbound lanes on Don Valley Parkway.

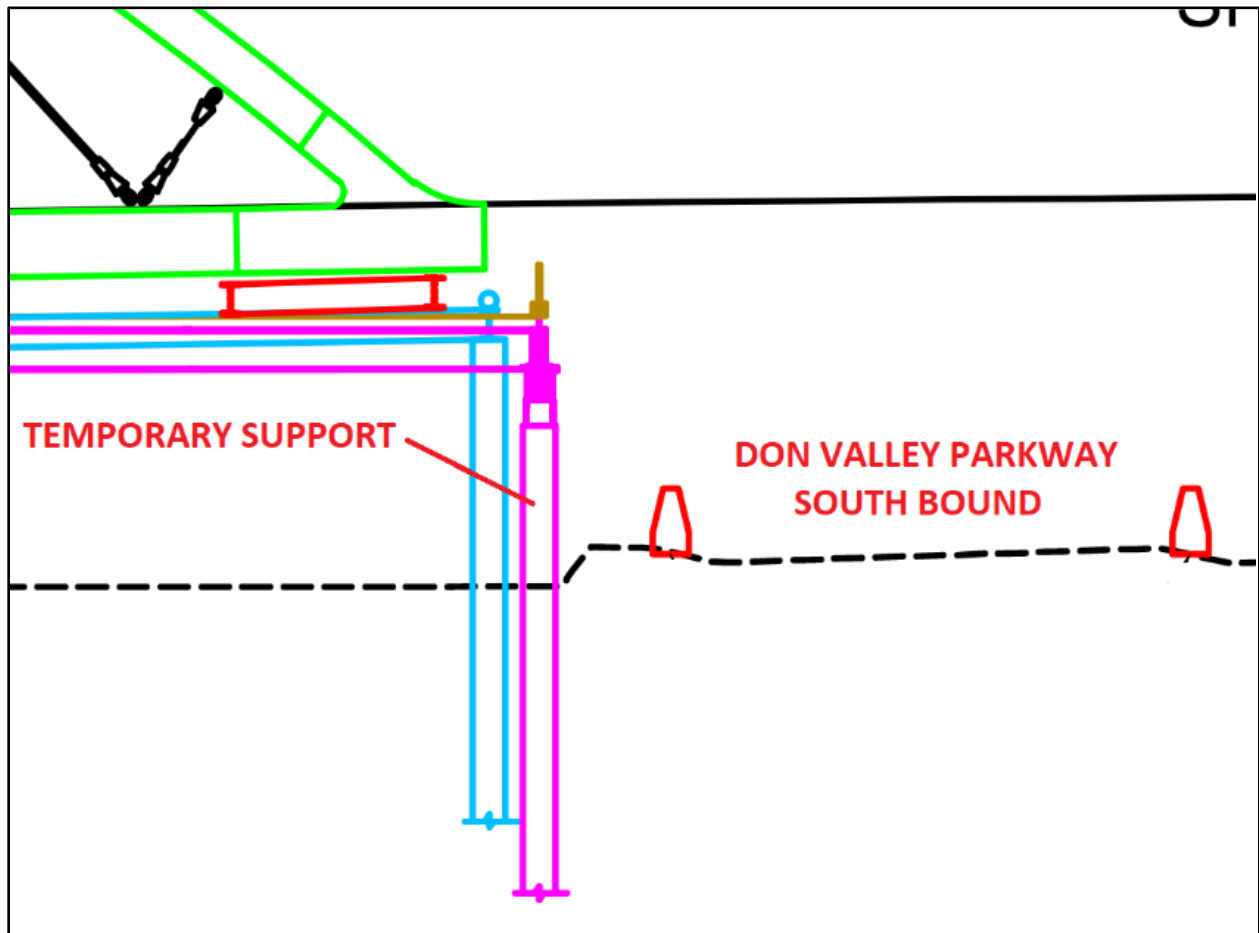


Figure 21 – Temporary Falsework Support

Source: Metrolinx

Road	Lane	Limit 1	Limit 2	Duration
DVP	SB inside	250m north of Gerrard St.	DVP-Gardiner on-ramp	4 nights (Sept. 1-Sept. 30, 2025)
DVP	SB middle	60m south of Gerrard St.	DVP-Gardiner on-ramp	4 nights (Sept. 1-Sept. 30, 2025)
DVP	SB outside	160m north of Dundas St.	DVP-Gardiner on-ramp	4 nights (Sept. 1-Sept. 30, 2025)
Don Roadway	SB	DVP	Lake Shore Blvd. East	4 nights (Sept. 1-Sept. 30, 2025)

Figure 22 – Temporary Lane Closures For Falsework Installation

Source: Metrolinx

Self-Propelled Modular Transporter (SPMT) Staging

Metrolinx plans to use SPMTs to launch the pre-assembled arch bridge across the Don Valley Parkway. The SPMTs and associated equipment will be assembled and staged along the east side of the Don Valley Parkway, as shown in Figure 23. The assembly of the SPMT will involve the use of large construction equipment, including cranes and delivery trucks.

Metrolinx will perform the work using temporary nightly full closures of the northbound lanes on the Don Valley Parkway. The temporary lane closures will be implemented from 11 p.m. of one day to 5 a.m. on the following day over two nights between January 1, 2026 and January 31, 2026. Figure 24 shows the details of the temporary lane closures.

The temporary nightly full closure of the northbound lanes on the Don Valley Parkway will restrict vehicular access from the F.G. Gardiner Expressway eastbound and Don Roadway northbound. Eastbound motorists will exit the F.G. Gardiner Expressway at Jarvis Street or other upstream off-ramps and continue through the City road network to connect with the Don Valley Parkway northbound at Eastern Avenue. With the temporary closure of Don Roadway northbound in place, eastbound and westbound motorists on Lake Shore Boulevard East will be able to connect with the Don Valley Parkway northbound via Carlaw Avenue, Eastern Avenue, Broadview Avenue and Queen Street or via other parts of the road network.

Metrolinx will install advanced advisory signage to inform motorists of the temporary nightly full closure of the southbound lanes on Don Valley Parkway.

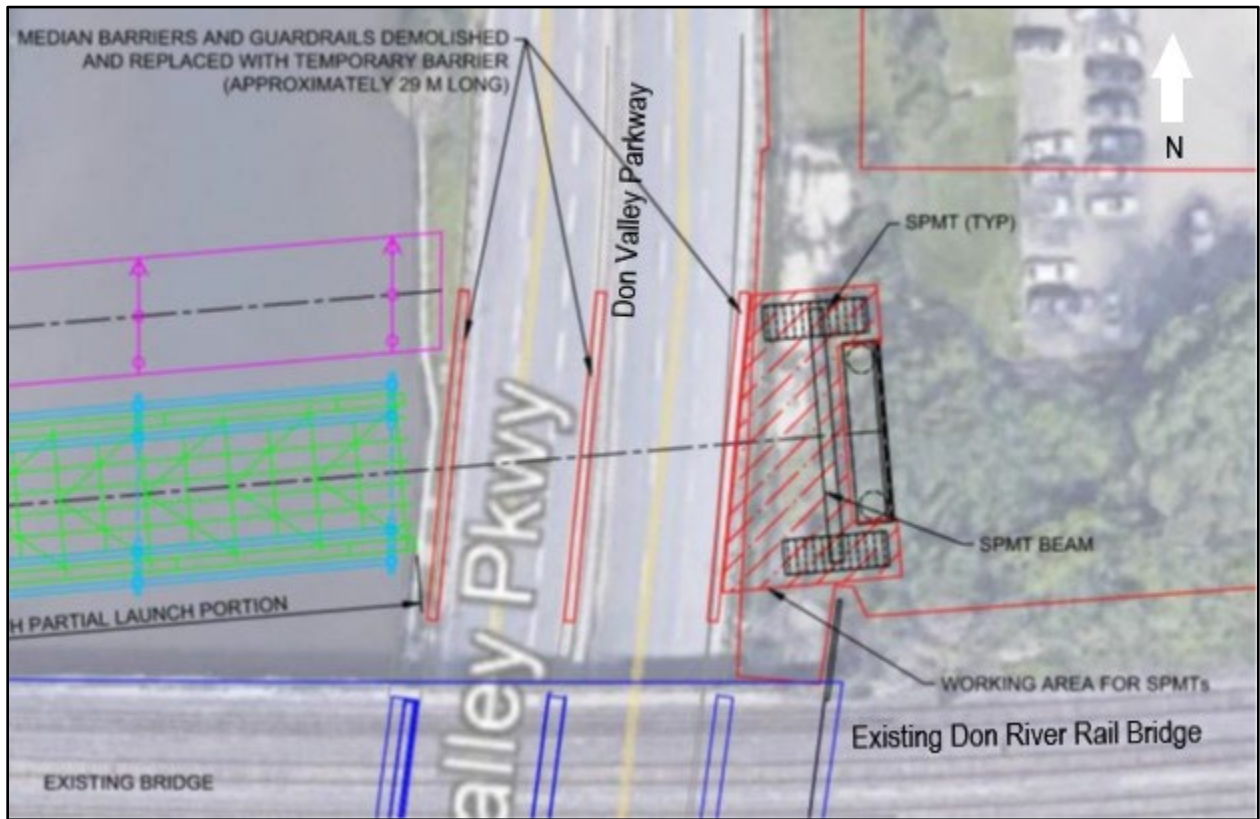


Figure 23 – Self-propelled Modular Transporter Staging

Source: Metrolinx

Road	Lane	Limit 1	Limit 2	Duration
Gardiner	EB inside	Rees St.	DVP-Gardiner off-ramp	2 nights (Jan. 1-Jan. 31, 2026)
Gardiner	EB middle	80m east of Simcoe St.	DVP-Gardiner off-ramp	2 nights (Jan. 1-Jan. 31, 2026)
Gardiner	EB outside	110m west of Bay St.	DVP-Gardiner off-ramp	2 nights (Jan. 1-Jan. 31, 2026)
DVP-Gardiner off-ramp	All lanes	Gardiner	DVP	2 nights (Jan. 1-Jan. 31, 2026)
DVP	NB all lanes	DVP-Gardiner off-ramp	100m south of Eastern Ave.	2 nights (Jan. 1-Jan. 31, 2026)
Don Roadway	NB	Lake Shore Blvd. East	DVP	2 nights (Jan. 1-Jan. 31, 2026)
Bay-Gardiner on-ramp	All lanes	Bay St.	Gardiner EB	2 nights (Jan. 1-Jan. 31, 2026)
Rees-Gardiner on-ramp	All lanes	Lakes Shore Blvd. East	Gardiner EB	2 nights (Jan. 1-Jan. 31, 2026)

Figure 24 – Temporary Lane Closures for SPMT Staging

Source: Metrolinx

Launch of Partial Arch Bridge

Metrolinx will launch the partial arch bridge structure using the SPMTs across the Don Valley Parkway. The bridge launch process will involve lifting and sliding the bridge structure eastward along the falsework until the bridge structure is over the southbound traffic lanes. The SPMTs will then lift the arch bridge and transport it across the Don Valley Parkway to the east abutment. The bridge section will then be lowered and anchored in place. The SPMTs will be demobilized before opening the road to traffic. Figure 25 shows the launch of the partial arch section of the bridge.

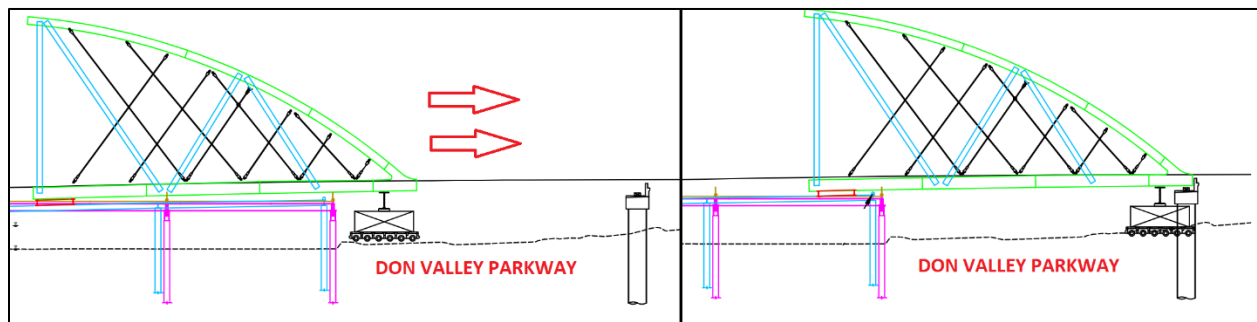


Figure 25 – Bridge Launch using the Self-propelled Modular Transporter

Source: Metrolinx

Metrolinx will perform the significant task of launching the bridge arch section using the temporary full closure of the Don Valley Crossing over a single weekend in January 2026.

With the temporary full closure in place, southbound motorists will exit Don Valley Parkway at Eastern Avenue or upstream off-ramps and continue their journey on the City road network. Eastbound motorists on the F.G. Gardiner Expressway will exit at Jarvis Street or upstream off-ramps. East and westbound motorists on Lake Shore Boulevard East at Don Roadway will be able to connect with Don Valley Parkway northbound via Carlaw Avenue, Eastern Avenue, Broadview Avenue and Queen Street or via other parts of the road network.

Metrolinx will provide advanced notification of the road closure on the project website and via electronic and traditional media. Additionally, Metrolinx will install advanced advisory signage and use the electronic variable messaging system to inform motorists of the weekend full road closure.

Reconstruction of Permanent Median

Upon completion of the bridge launch operation, Metrolinx will reconstruct the median barrier on the Don Valley Parkway. The work will include the removal of the temporary concrete barrier, installation of the new foundation, reinforcement, forming and concrete pour.

Similar to the removal of the median concrete barrier, Metrolinx will perform the installation work using temporary nightly closures of the northbound and southbound inside lanes on the Don Valley Parkway. The temporary lane closures will be

implemented from 11 p.m. of one day to 5 a.m. on the following day over four nights between February 1, 2026 and February 28, 2026.

The temporary lane closures on the Don Valley Parkway will extend to the F.G Gardiner Expressway and Don Roadway. A portion of the south-to-westbound lane of the Don Valley Parkway-F.G. Gardiner Expressway will be temporarily closed to accommodate the termination taper of the southbound inside lane closure on the Don Valley Parkway. Traffic will be maintained on the remaining available adjacent south-to-westbound lane.

Additionally, temporary closure of the southbound inside lane on the Don Valley Parkway will restrict vehicular access to Don Roadway southbound, between the Don Valley Parkway and Lake Shore Boulevard East. Southbound motorists on the Don Valley Parkway, destined to Don Roadway southbound and Lake Shore Boulevard East, will detour via Eastern Avenue, Cherry Street and Lakeshore Boulevard East. Alternatively, southbound motorists may continue their journey along the F.G. Gardiner Expressway and detour via Yonge Street, Queens Quay East and Lake Shore Boulevard East.

Metrolinx will install advanced advisory signage along the Don Valley Parkway, F.G. Gardiner Expressway and Lake Shore Boulevard East to inform motorists of the temporary nightly lane closures. Figure 26 shows the details of the temporary lane closures.

Road	Lane	Limit 1	Limit 2	Duration
Gardiner	EB inside	Parliament St.	DVP-Gardiner off-ramp	4 nights (Feb. 1-Feb. 28, 2026)
DVP-Gardiner off-ramp	EB-to-NB inside	Gardiner	DVP	4 nights (Feb. 1-Feb. 28, 2026)
DVP	NB inside	DVP-Gardiner off-ramp	200m south of Eastern Ave.	4 nights (Feb. 1-Feb. 28, 2026)
DVP	SB Inside	100m north of Eastern Ave.	DVP-Gardiner on-ramp	4 nights (Feb. 1-Feb. 28, 2026)
DVP-Gardiner on-ramp	SB-to-WB inside	DVP	150m south	4 nights (Feb. 1-Feb. 28, 2026)
Don Roadway	SB	DVP	Lake Shore Blvd. East	4 nights (Feb. 1-Feb. 28, 2026)

Figure 26 – Temporary Lane Closures for Installation of Permanent Median Barrier Source: Metrolinx

Tightening of Bridge Cables

Metrolinx will complete the OL Lower Don Bridge by assembling the remaining portion of the arch bridge on the Don River and joining it with the already launched portion to

create a single, self-supporting structure. This work will require tightening of the bridge hanger cables to make the bridge structure self-supporting.

Metrolinx will perform this work using temporary full closures of the northbound and southbound lanes on the Don Valley Parkway. The entire operation is expected to be completed over four nights in June 2026.

Prior to issuing a permit, City staff will review the Metrolinx schedule for the temporary lane closures to ensure no conflict with the 2026 FIFA World Cup games in the City. In the event of a conflict, Metrolinx will be requested to provide alternative dates of nightly road closures.

With the temporary full closure in place, southbound motorists will exit Don Valley Parkway at Eastern Avenue or upstream off-ramps and continue their journey on the City road network. Eastbound motorists on the F.G. Gardiner Expressway will exit at Jarvis Street or upstream off-ramps. East and westbound motorists on Lake Shore Boulevard East at Don Roadway will be able to connect with Don Valley Parkway northbound via Carlaw Avenue, Eastern Avenue, Broadview Avenue and Queen Street or via other parts of the road network.

Metrolinx will provide advanced notification of the road closure on the project website and via electronic and traditional media. Additionally, Metrolinx will install advanced advisory signage and use the electronic variable messaging system to inform motorists of the weekend full road closure.

Removal of Bridge Arch Bracing

When the bridge structure becomes self-supporting, the temporary bridge bracing, shown in Figure 27 will be removed. Metrolinx will perform this work using temporary nightly full closures of the northbound and southbound lanes on the Don Valley Parkway. The entire operation is expected to be completed over two nights in July 2026.

Metrolinx's planned temporary nightly full road closures will be coordinated with the 2026 FIFA World Cup games in the City to ensure no road closures take place during the World Cup games in the City. In the event of a conflict, Metrolinx will be requested to provide alternative dates of the nightly road closures.

As with the earlier mentioned tasks requiring the temporary full road closure, southbound motorists on the Don Valley Parkway, eastbound motorists on the F.G. Gardiner Expressway and east and westbound motorists on Lake Shore Boulevard East will be diverted at the nearest available intersection.

As with all the temporary closures, Metrolinx will provide advanced notification of the temporary road closure on the project website and via electronic and traditional media. Additionally, Metrolinx will install advanced advisory signage and use the electronic variable messaging system to inform motorists of the weekend full road closure.

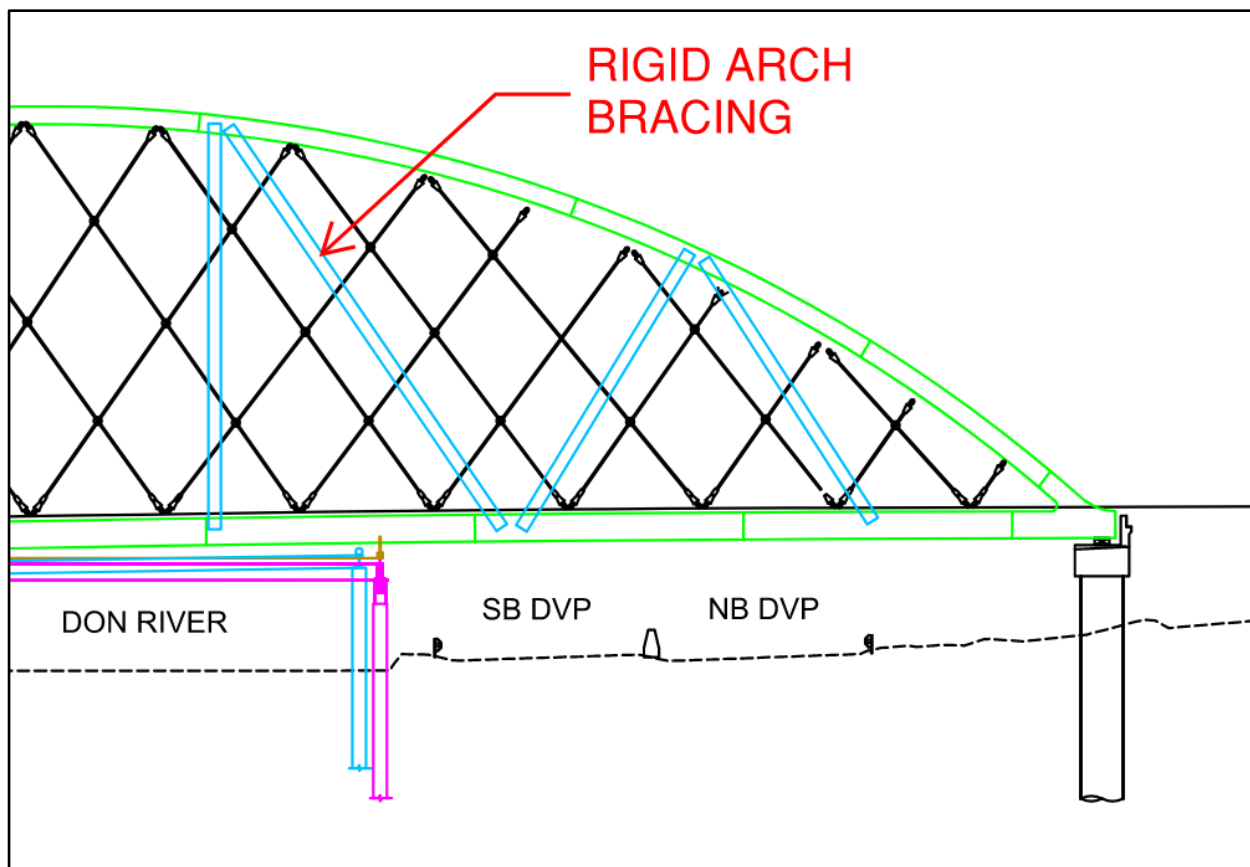


Figure 27 – Bridge Arch Bracing

Source: Metrolinx

Installation of Debris Shield

Metrolinx will install a temporary debris shield to ensure the safety of the travelling public during construction of the bridge deck. Metrolinx will perform this work using a temporary one night full closure of the northbound and southbound lanes on the Don Valley Parkway, expected to be in August 2026.

Bridge Deck Concrete Placement

Metrolinx will complete the bridge deck placement using a temporary one night full closure of the northbound and southbound lanes of the Don Valley Parkway, expected to be in September 2026.

Bridge Railing Curb Placement

The bridge deck structure includes metal railings with cast-in-place concrete curbs on both sides of the bridge deck. Metrolinx will install these curbs in a separate concrete pour using a temporary one night full closure of the northbound and southbound lanes of the Don Valley Parkway, expected to be in October 2026.

Removal of Debris Shield

Metrolinx will remove the temporary debris shield from underneath the bridge using a temporary one night full closure of the northbound and southbound lanes of the Don Valley Parkway, expected to be in November 2026.

Removal of Deck Forming System

Removing the non-permanent deck formwork for the concrete bridge deck will use separate directional full closures on the Don Valley Parkway between December 2026 and January 2027. The work over the northbound lanes will be completed using a temporary nightly full closure of the northbound lanes of the Don Valley Parkway. Similarly, the work over the southbound lanes will be completed using a temporary nightly full closure of the southbound lanes of the Don Valley Parkway.

Removal of Temporary Support

Removal of the temporary falsework pier adjacent to the southbound lanes of the Don Valley Parkway and reinstatement of the guiderail will require a temporary one night full closure of the southbound lanes of Don Valley Parkway, expected to be in December 2026.

The temporary nightly full closure of the southbound lanes on the Don Valley Parkway will restrict vehicular access to the F.G. Gardiner Expressway westbound and Don Roadway southbound. Southbound motorists will exit the Don Valley Parkway at Eastern Avenue and continue westbound on the road network to connect to the F.G. Gardiner Expressway westbound using the Lower Jarvis Street on-ramp or other subsequent on-ramps. Similarly, motorists destined to Lake Shore Boulevard East and Don Roadway may detour via Eastern Avenue, Cherry Street and Lakeshore Boulevard East.

Metrolinx will install advanced advisory signage to inform motorists of the temporary nightly full closure of the southbound lanes on Don Valley Parkway.

Residual Spot Repairs and Adjustments

Once the entire bridge structure is constructed and all temporary falsework is removed, Metrolinx will perform any spot repairs to the paint and also make adjustments to the bridge hanger cables, if required.

This may require separate directional full closures on the Don Valley Parkway between October 2026 and June 2027. The work over the northbound lanes will be completed using a temporary nightly full closure of the northbound lanes of the Don Valley Parkway. Similarly, the work over the southbound lanes will be completed using a temporary nightly full closure of the southbound lanes of the Don Valley Parkway.

Finishing of the OL Lower Don Bridge

Metrolinx's Project Co. responsible for the Rolling Stock, Systems, Operations and Maintenance will perform the finishing of the OL Lower Don Bridge by installing the rail tracks and related infrastructure.

The Project Co. will perform this task using separate directional full closures on the Don Valley Parkway between October 2026 and June 2027. The work over the northbound lanes will be completed using two temporary nightly full closures of the northbound lanes of the Don Valley Parkway. Similarly, the work over the southbound lanes will be completed using two temporary nightly full closures of the southbound lanes of the Don Valley Parkway.

Impact and Mitigation Measures

As described earlier in the report, except for one weekend temporary full closure, Metrolinx will complete the construction of the Don Valley Crossing and OL Lower Don Bridge using nightly (11 p.m. to 5 a.m.) temporary lane/road closures. Due to lower traffic volumes, the night time lane closures are expected to result in lower levels of traffic diversion, congestion and delay. During the weekend full road closure at the OL Lower Don Bridge, Metrolinx will install advanced advisory signage including portable changeable message signs at the network level to inform motorists of the full road closure. Additionally, Metrolinx will provide the road closure information on the project website, social media and traditional media to encourage alternative routes or travel modes. Metrolinx's contractor will be required to submit the Road Disruption Activity Reporting System (RoDARS) notification and inform web-based navigation service providers such as Google and Waze etc. of the road closures.

Special considerations will be given to motorist's safety in the work zones during the night time work. City staff will review the work zone traffic management plans to ensure all signage, traffic control setup and work zone illumination requirements comply with the Ontario Traffic Manual Book 7 guidelines.

Apart from traffic mitigation, Metrolinx's contractor will identify major noise and vibration generating construction activities and develop a construction noise and vibration management plan with protocols to deal with the noise and vibration related issues and complaints. Additionally, Metrolinx's contractor will perform construction noise and vibration monitoring to ensure work generated noise and vibration levels comply with established criteria.

City staff and Metrolinx will collaborate to investigate the possibility of leveraging the City's yearly maintenance closures on the Don Valley Parkway and F.G. Gardiner Expressway to carry out the Ontario Line related work, consequently reducing the number of lane closures and impact on commuters.

Additionally, the Metrolinx-proposed lane closures will be coordinated with planned events on the Don Valley Parkway and F.G. Gardiner Expressway. In case of a conflict, Metrolinx will be requested to provide an alternative work schedule.

Temporary Delegation of Authority

As previously stated, the report details the maximum number and duration of temporary lane closures expected to be required to construct the Don Valley Crossing and OL Lower Don Bridge. However, potential changes to the schedule of these temporary lane closures may occur due to Metrolinx's pending contractor selection process for these projects.

The need to report and obtain City Council approval for any schedule changes of these temporary lane closures could delay the construction schedule due to the timeline of Council reporting cycles. To avoid these delays and promptly address the schedule and issue permits without delay for the construction, it is recommended that the General Manager, Transportation Services, be given the delegated authority to temporarily close to vehicular traffic portions of the Don Valley Parkway and F.G. Gardiner Expressway, including entry and exit roadway ramps, despite Section 937-4 of Chapter 937, as required for the purposes of the construction of the Don Valley Crossing and OL Lower Don Bridge, as outlined in the recommendations.

It is also recommended that, in carrying out this delegation, the General Manager, Transportation Services, be exempt from Section 937-5 of Chapter 937, that being the requirement to notify the local Ward Councillor of the pending closure and the requirement to report on the proposed closure if so requested by the local Ward Councillor. It should be noted that City Council has previously granted a similar delegation of authority on the Ontario Line project and other subway expansion projects, including the Scarborough Subway Extension, Eglinton Crosstown West Extension and Yonge North Subway Extension. City staff will hold regular meetings with local Councillors to provide updates, information and advice on the Metrolinx works.

This temporary delegation of authority will enable Transportation Services staff to efficiently handle any matters related to project scheduling, traffic control, road safety, or event coordination. Furthermore, the temporary delegation will allow staff to allocate their time towards reviewing plans, collaborating with stakeholders, and coordinating work zones to reduce construction impacts on the local communities and travelling public, instead of responding to numerous reporting requirements.

Communication and Community Engagement

Metrolinx will implement a Communication Plan to proactively engage the community, provide construction updates, address concerns and minimize impacts during the construction of the Don Valley Crossing and OL Lower Don Bridge.

The Metrolinx Communication Plan will include the following:

- Project updates on the project website and other information portals including social media, television, e-newsletter, construction notices with details on construction activities, schedule, impact and mitigation.

- Communication regarding traffic and noise impacts and proposed mitigation within the zone of influence along the sites of the Don Valley Crossing and OL Lower Don Bridge.
- 24/7 communication contacts during the construction work.
- Project updates at the Construction Liaison Committee meetings.

To address project related concerns, Metrolinx's contractor's phone number and email address will be shared with the Toronto 311 service. Any complaints received through the 311 service or through the local Councillor's office will be directed to this dedicated email or phone number. The complaints will be logged and resolved by Metrolinx and their contractor project team in collaboration with City staff.

Metrolinx will discuss project updates and advanced information on project activities, including road closures, at the Construction Liaison Committee meetings. Additionally, Metrolinx will identify and address any concerns from the impacted community. Metrolinx will also work closely with the local Councillors to discuss specific details of the construction work and traffic management plans. City staff will also hold regular one-on-one briefings with local Councillors to provide information and advice on concerns related to the projects. Additionally, City staff will continue to have ongoing liaison with Metrolinx to minimize disruption during construction activities.

CONTACT

Ashley Curtis, Director, Planning and Capital Program, Transportation Services
Ashley.Curtis@toronto.ca, Tel: 416-392-0170

SIGNATURE

Barbara Gray
General Manager, Transportation Services