

PROSTATE CANCER

WE CAN'T AVOID IT, WE HAVE TO TALK ABOUT IT





Anthony Henry Story



Prostate cancer deaths

This table shows global prostate cancer mortality in 2020. Zimbabwe had the highest rate of prostate cancer mortality in 2020, followed by Barbados.

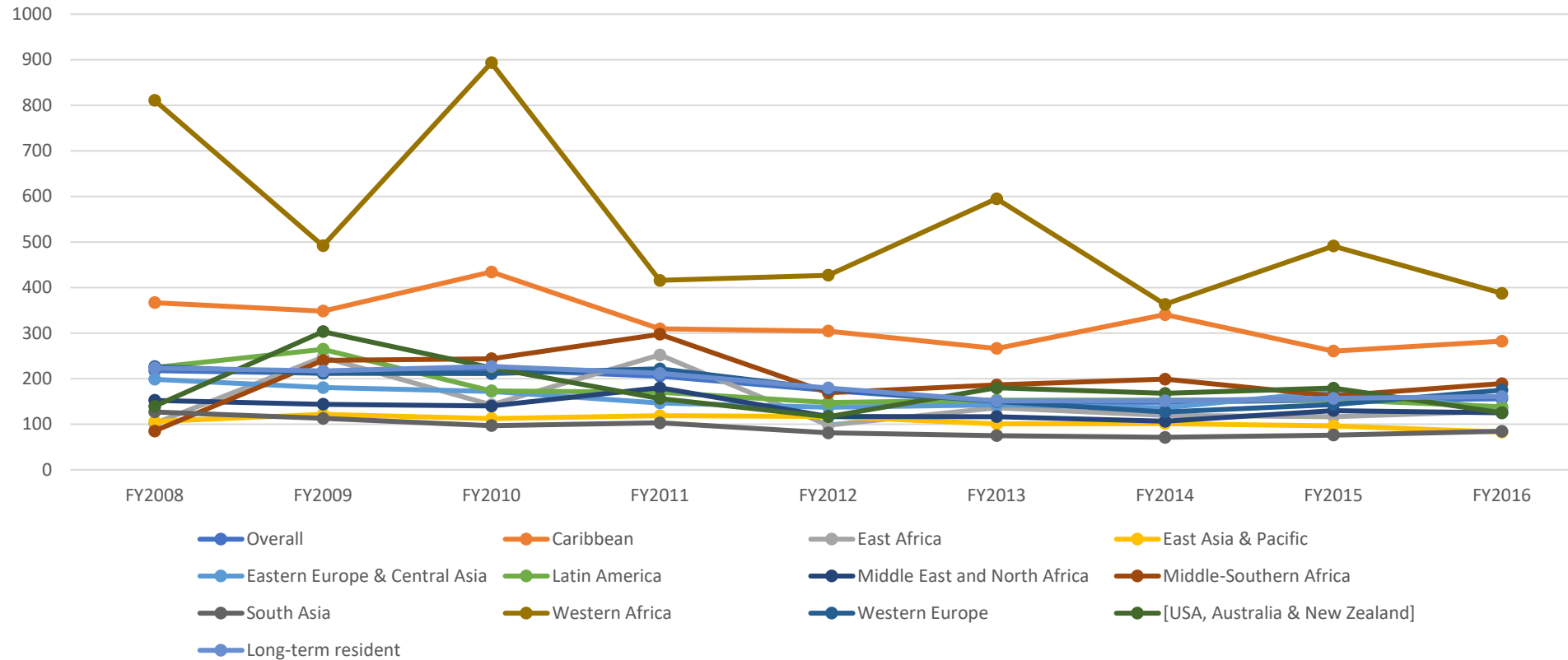
Rank	Country	Number	ASR/100,000
	<i>World</i>	<i>375,304</i>	<i>7.7</i>
1	Zimbabwe	868	41.7
2	Barbados	137	40.3
3	Haiti	1,533	40.2
4	Zambia	823	40.1
5	Jamaica	844	39.4
6	Trinidad and Tobago	403	38.9
7	Bahamas	72	36.3
8	Dominican Republic	2,228	35.0
9	Saint Lucia	54	32.6
10	Côte d'Ivoire	1,600	29.5

Source: The World Health Organization



What does Ontario data tell us

Figure 1. Age-standardized incidence rates per 100,000 for prostate cancer in Ontario for fiscal years (FY) 2008-2016, stratified by region of origin



Research by Dr. Aisha Lofters, Research Scientist, University of Toronto and based on Prostate Cancer among Immigrant men in Ontario. The Walnut Foundation Co-authored this study origin.



Potential Reasons

- Potential reasons for differences in prostate cancer incidence and mortality for Black men = ***social disparities, economic disparities, genetics associated with being of West African ancestry, environmental factors, dietary factors, access to quality health care***
- ***Note: US and UK data are identical***



The Walnut Foundation

- We are a 100% Volunteered-based Registered non-profit Charity, with a mission to bring awareness to the community through education (monthly meetings/ conferences/ churches, community health centres, etc)
- Provide a safe/ confidential environment for dialogue and support to black men with Prostate Cancer.
- Partnered in research projects targeted to the black community (Princess Margaret Hospital (2) Canadian Cancer Society (1) Movember (1))
- Fund scholarships for black students entering the medical programs at Temerty Faculty of Medicine at the University of Toronto.
- Our Funding comes from an Annual Walkathon and from sponsors to our Conferences and Symposiums



Our Challenge

- The Walnut Foundation is the only organization, that we know of, providing awareness education about prostate cancer in black men.
- We are a 100% volunteer-based with growing demands for our services and partnerships in various Prostate cancer initiatives.
- This model of operations is not sustainable in the future. We need help to transform our operating model to continue to serve the black community.



Our Recommendations

- Toronto Public Health partner with the Walnut Foundation to get the awareness message into the black communities through its Public Health Agencies.
- TPH assistance in the form of funding for part time staff to help sustain the mission and objective of the Walnut Foundation and support the increased demands.