

Pedestrian Crossing Protection - Senlac Road, South of the York Cemetery and Funeral Centre Access

Date: January 9, 2023

To: North York Community Council

From: Director, Traffic Management, Transportation Services

Wards: Ward 18 - Willowdale

SUMMARY

As the Toronto Transit Commission (TTC) operates a transit service on Senlac Road, City Council approval of this report is required.

Transportation Services has reviewed the need for pedestrian crossing protection on Senlac Road at the York Cemetery and Funeral Centre access. Based on the assessment undertaken, Transportation Services is recommending the installation of a pedestrian crossover (PXO) at the subject location. The PXO will provide enhanced safety for vulnerable road users.

RECOMMENDATIONS

The Director, Traffic Management, Transportation Services recommends that:

1. City Council authorize the installation of a pedestrian crossover on Senlac Road at a point approximately 210 metres north of Burnett Avenue.

FINANCIAL IMPACT

The estimated cost for installing a PXO on Senlac Road, approximately 210 metres north of Burnett Avenue is \$110,000. Funding would be subject to availability and competing priorities within the Transportation Services interim 2023 Capital Budget.

DECISION HISTORY

This report addresses a new initiative.

COMMENTS

Transportation Services staff was requested by the former Ward Councillor to review the need for pedestrian crossing protection on Senlac Road at the York Cemetery and Funeral Centre access. This request is to address the long distance between protected pedestrian crossings on Senlac Road and enhance safety for pedestrians and transit users using the mid-block TTC bus stops.

Existing Conditions

Senlac Road is characterized by the following conditions:

- It is a two-lane, north-south minor arterial roadway with a centre two-way left turn lane
- It operates two-way traffic on a pavement width of approximately 10 metres
- The daily two-way traffic volume is approximately 7,000 vehicles
- The speed limit is 50 km/h
- Heavy trucks are prohibited at all times
- There is TTC service provided by the 98 Willowdale-Senlac bus route
- There are sidewalks located on both sides of the street

North-south traffic on Senlac Road is free-flow at the York Cemetery and Funeral Centre access.

The York Cemetery and Funeral Centre, located at 160 Beecroft Road, has accesses on both sides of Senlac Road at approximately 230 metres north of Burnett Avenue.

The adjacent land use in this area is an open space cemetery on both sides of Senlac Road.

The closest adjacent traffic controls are located approximately 250 metres to the north at Park Home Avenue in the form of traffic control signals and approximately 230 metres to the south at Burnett Avenue in the form of a pedestrian crossover (PXO).

A map of the area is shown in Attachment 1.

Pedestrian Crossover (PXO)

To determine the need for a PXO on Senlac Road at the York Cemetery and Funeral Centre access, staff rely on the justification criteria as outlined in the Ontario Traffic Manual (OTM) Book 12. The OTM justification criteria includes two main factors: the volume of vehicles and pedestrians; and pedestrian delay to cross traffic. Based on the traffic volume on Senlac Road, the warrants require a minimum of 418 pedestrian crossing over eight hours. Also, based on the pedestrian crossing volume, at least 75 pedestrians must be delayed more than 10 seconds.

An eight-hour pedestrian volume and delay study was conducted on November 3, 2021 which recorded the total volume and delays of pedestrians crossing at Senlac Road and the York Cemetery and Funeral Centre access. Seniors, unassisted children and people with disabilities that are observed crossing are given a higher weighting by a factor of

two. The adjusted volume of pedestrians observed crossing was 143; of these, 22 experienced a delay greater than 10 seconds. The compliance level of the study results in relation to the warrant criteria is shown in Table 1 below.

Table 1: Pedestrian Crossover Warrant Criteria and Compliance at Senlac Road and the York Cemetery and Funeral Centre Access

Justification	Compliance
Pedestrian Volume	34 percent
Pedestrian Delay	29 percent

In order to meet the warrant criteria, 100 percent compliance is required in both categories. Based on the results of the study, a PXO is not technically justified as the compliance levels did not meet the minimum requirements.

Staff also reviewed the collision history at this location. Collision statistics provided by the Toronto Police Service for the three-year period ending December 31, 2021 did not disclose any collisions on Senlac Road at the York Cemetery and Funeral Centre access that involved crossing pedestrians.

In addition to the technical criteria, consideration of the surrounding area is given and in some cases engineering judgement may be applied to recommend a PXO even if the number of pedestrians do not meet the threshold of the technical warrants. Due to the long spacing between controls on Senlac Road and the presence of transit stops in both directions that attract pedestrians to cross the street, Transportation Services is recommending the installation of a PXO on Senlac Road, south of the York Cemetery and Funeral Centre access.

Environmental safety characteristics were also evaluated to ensure that the installation of a PXO would be appropriate at this location. Based on the evaluation, a PXO would be a suitable type of pedestrian crossing protection at this location. Details of the evaluation are included in the Attachment 2.

In considering the above, Transportation Services recommends the installation of a PXO on Senlac Road at a point approximately 210 metres north of Burnett Avenue as it will provide enhanced safety for all road users.

A consultation with Traffic Systems Planning, Design and Capital Coordination Unit disclosed that the preferable location of the proposed PXO is south of the York Cemetery and Funeral Centre access, adjacent to the existing southbound TTC bus stop. This will however require the relocation of the existing southbound TTC bus stop and bus shelter on the west side of Senlac Road. Accordingly, comments were requested from TTC regarding the relocation of the existing southbound TTC bus stop and bus shelter. TTC staff have advised that they support the proposal and indicated that they have no objection in relocating the existing southbound TTC bus stop and bus shelter to approximately 42 metres further south.

Other Considerations

It should also be noted that the installation of a PXO on Senlac Road south of the York Cemetery and Funeral Centre access will result in the following impacts:

- There is potential for an increase in minor delays for traffic, including TTC buses, on Senlac Road as north-south traffic will no longer operate free flow.
- Relocation of southbound TTC bus stop to approximately 42 metres further south
- Relocation of existing bus shelter on the west side of Senlac Road to a point 42 metres further south.

The Ward Councillor has been advised of the recommendation in this report.

CONTACT

Shawn Dillon, Manager Traffic Operations (Area 2), Transportation Services, 416-394-8409, Shawn.Dillon@toronto.ca

SIGNATURE

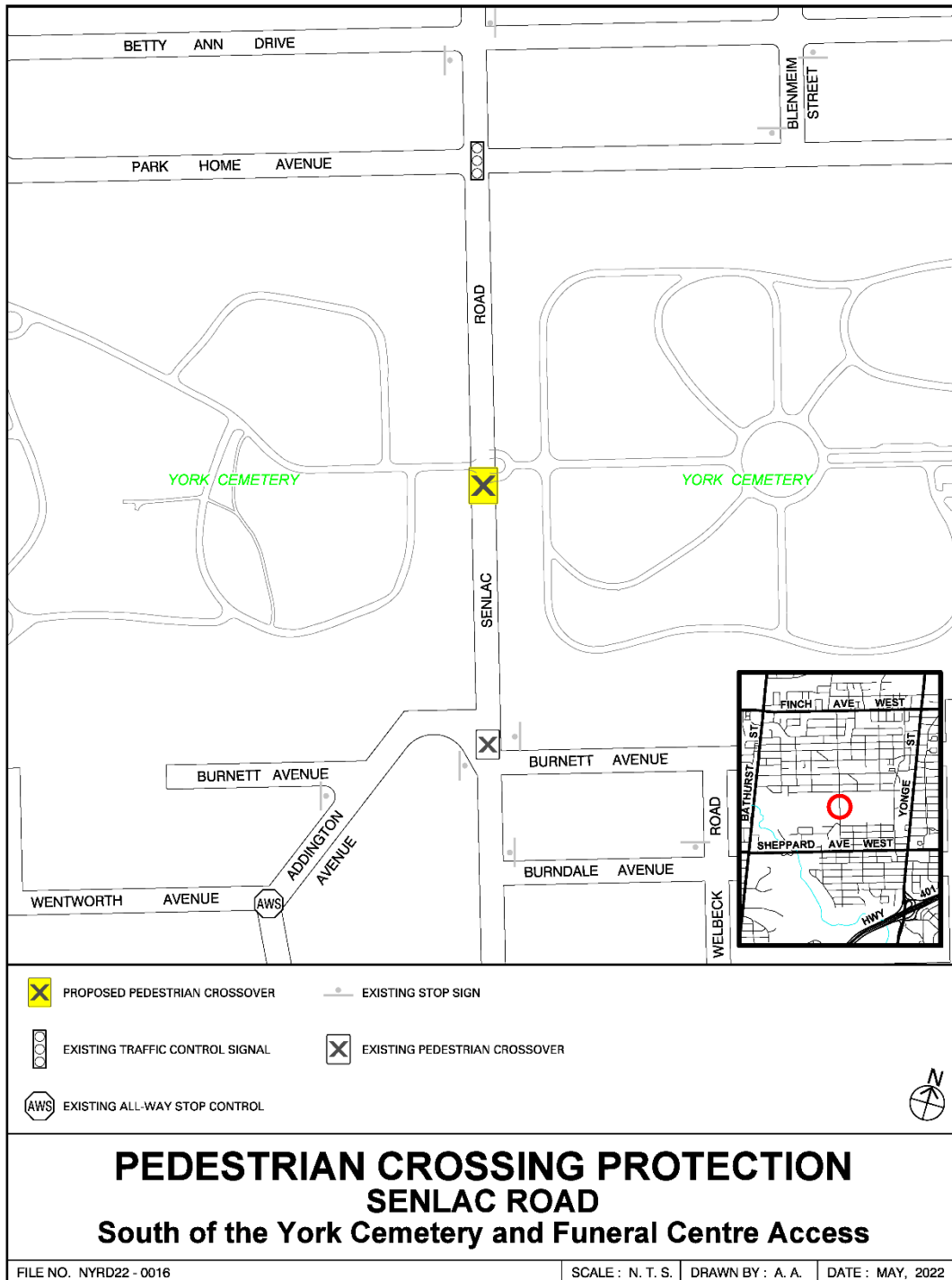
Roger Browne, M.A.Sc., P. Eng.
Director, Traffic Management, Transportation Services

ATTACHMENTS

Attachment 1: Map - Pedestrian Crossing Protection - Senlac Road at the York Cemetery and Funeral Centre Access

Attachment 2: Environmental Safety Audit - PXO - Senlac Road at the York Cemetery and Funeral Centre Access

Attachment 1: Map - Pedestrian Crossing Protection - Senlac Road at the York Cemetery and Funeral Centre Access



Attachment 2: Environmental Safety Audit - PXO – Senlac Road and the York Cemetery and Funeral Centre Access

Standard	Comments	Standard Met/Not Met
Vehicle operating speed less than 60 km/h	The posted speed limit on Senlac Road is 50 km/h with an operating speed of 54 km/h	Met
Not more than four lanes wide on a two-way street or more than three lanes wide on a one-way street	Senlac Road is two-lanes with a centre left turn lane.	Met
Traffic volume not more than 35,000 vehicles per day	Senlac Road carries approximately 7,000 vehicles per day.	Met
No significant volume of turning movements	The volume of traffic turning to/from Senlac Road is moderate.	Met
No visibility problems exist for either pedestrians or motorists	No vertical or horizontal curves.	Met
No loading zones (including TTC) in the immediate area	TTC stops are located on both sides of Senlac Road at York Cemetery entrance	Not Met
No driveways or entrances nearby	No driveways in the vicinity of PXO	Met
Spacing is not less than 200 metres to another pedestrian crossover or traffic control signal	<p>Senlac Road and Burnett Avenue (PXO) - 210 metres south</p> <p>Senlac Road and Park Home Avenue (TCS) - 250 metres north</p>	Met