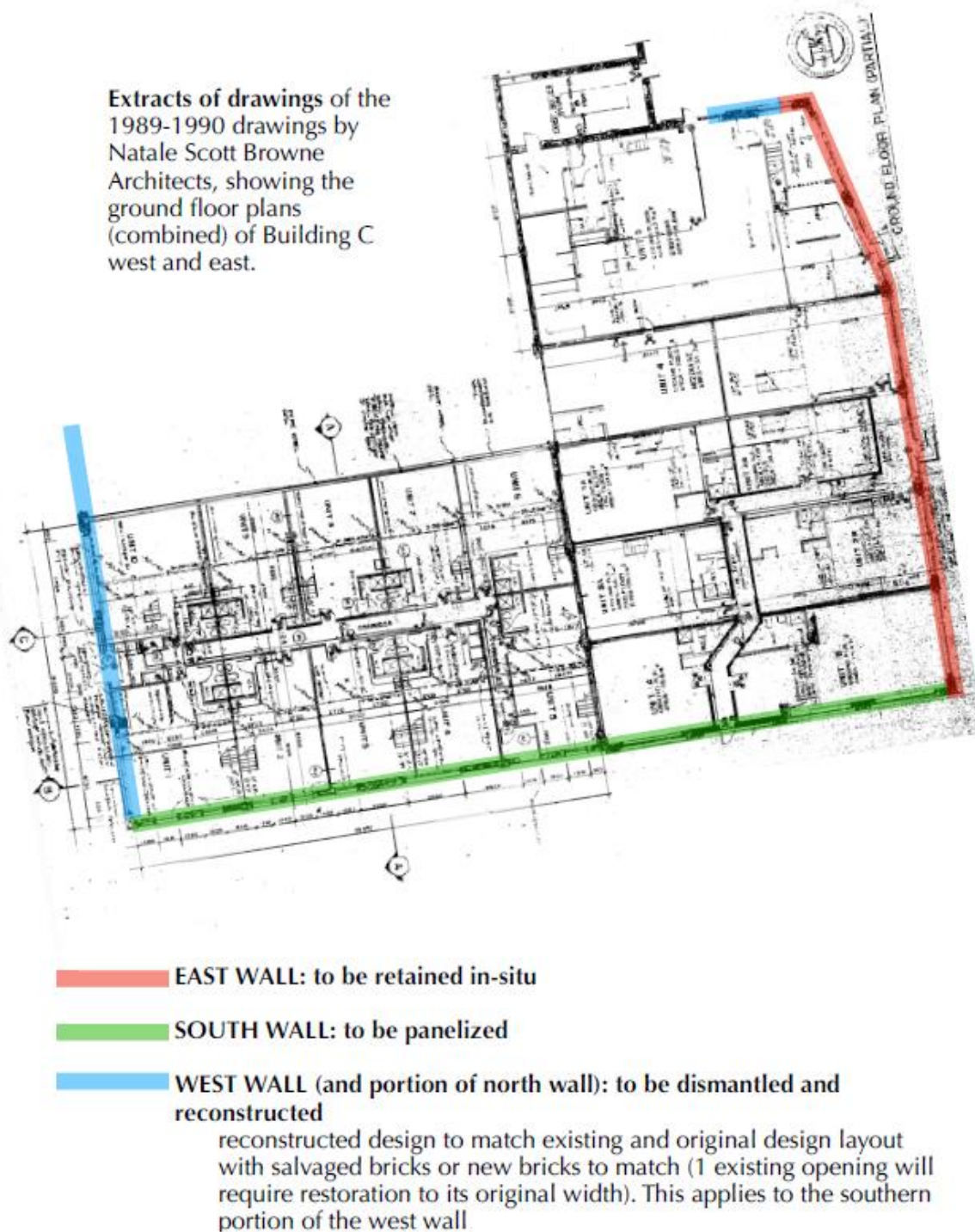


## PUBLIC APPENDIX "D"

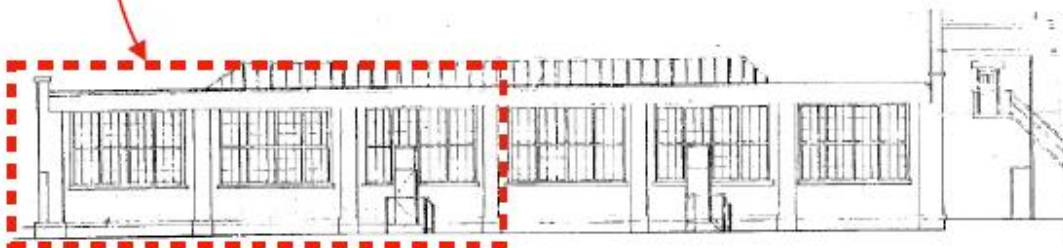
### Public Appendix "D" - Conservation Strategy plans and drawings



Plan showing conservation strategy proposed for the east, south and west walls of 221 Sterling Road (HIA prepared by GBCA Architects dated February 1, 2023)






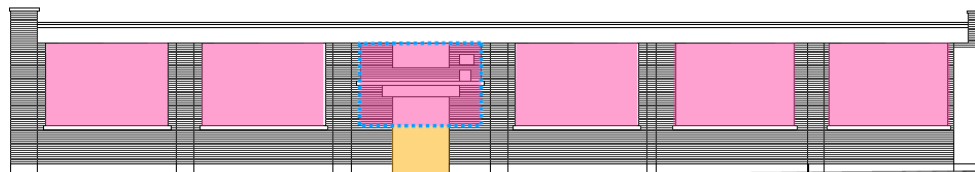
Key Plan of "Building C", highlighting the east wall



East elevation from the the 1989-1990 drawings by Natale Scott Browne Architects (annotated by GBCA).

Proposed building elevations, showing interventions:

-  masonry removals to create opening (salvage bricks if in good condition)
-  new windows
-  infill with masonry

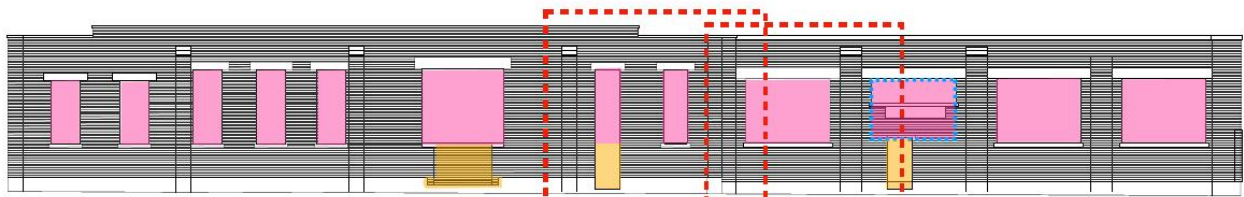


Existing east elevation, showing proposed alterations.

Illustrations showing proposed conservation strategy for the east elevation (HIA prepared by GBCA Architects dated February 1, 2023)



Key Plan of "Building C", highlighting the south wall



Existing south elevation, showing proposed alterations.

Proposed building elevations, showing interventions:

- masonry removals to create opening (salvage bricks if in good condition)
- new windows
- infill with masonry



Examples of panelization layouts. See Appendix II for further information.

Illustration showing proposed conservation strategy for the south wall (HIA prepared by GBCA Architects dated February 1, 2023)



*Proposed building elevations, showing interventions:*



*demolished*



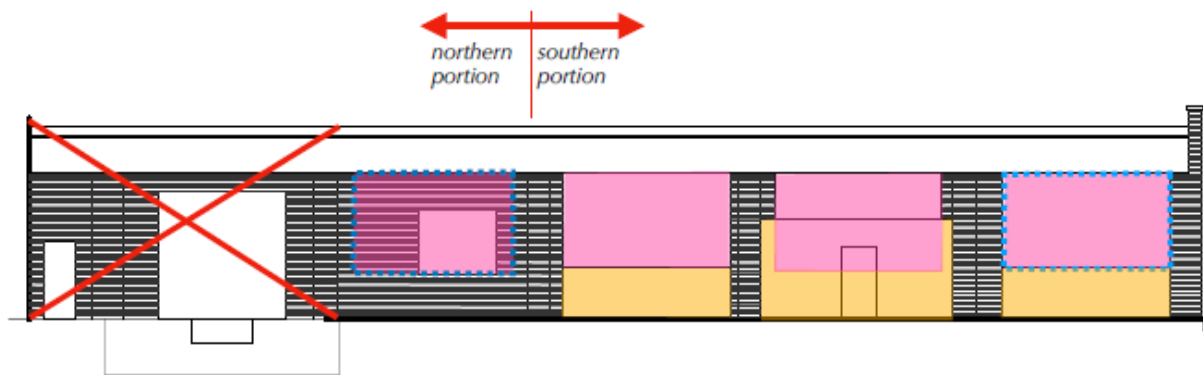
*masonry removals to create opening  
(salvage bricks if in good condition)*



*new windows*



*infill with new masonry*



Illustrations showing proposed conservation strategy of the west elevation (HIA prepared by GBCA Architects dated February 1, 2023)