



PB5.3

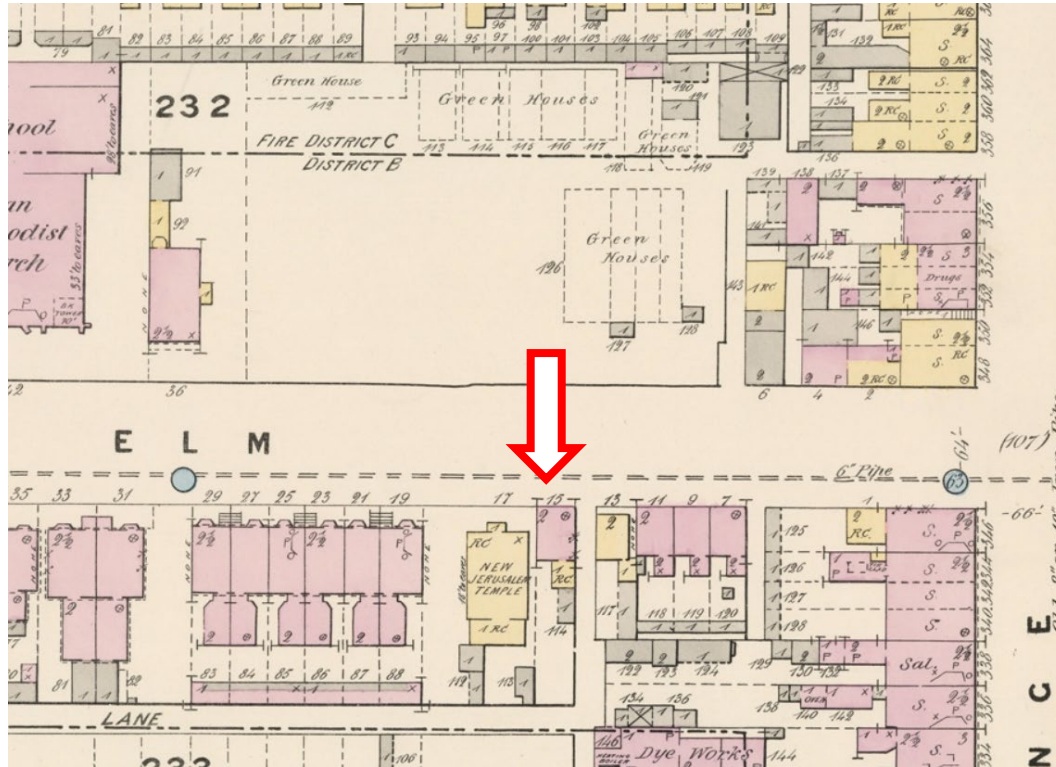
15 Elm Street – Intention to Designate a Property under Part IV, Section 29 of the Ontario Heritage Act

PB5.3 15 Elm Street

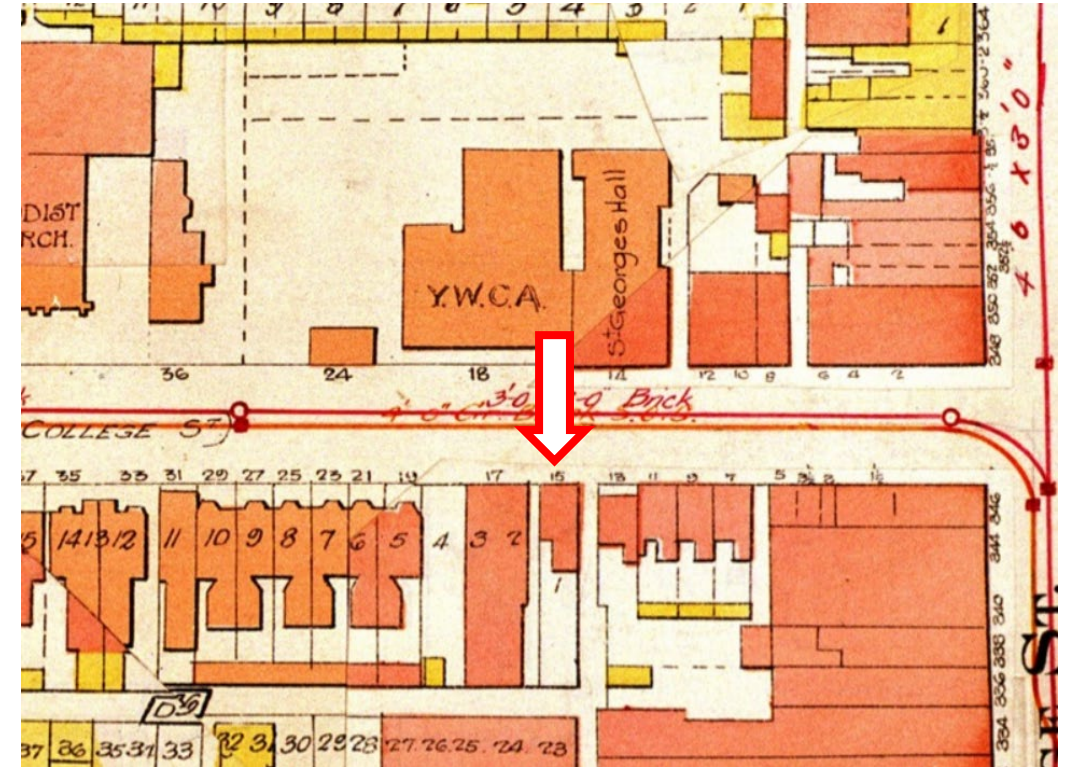


This location map is for information purposes only; the exact boundaries of the property are not shown. The arrow marks the location of the site.

PB5.3 15 Elm Street



1880 Goad's Fire Insurance Plan showing the residential character of the south side of Elm Street west of Yonge, which is nearly fully developed with brick house-form properties. The arrow indicates the property at 15 Elm Street.



1924 Goad's Historical Atlas Map showing that the south side of Elm is now fully built out with brick dwellings while the grand YWCA and St. George's Hall buildings have replaced the nurseries and gardens on the north side of the street.

PB5.3
15 Elm Street



c. 1865 archival photo looking northwest at the Fleming Nursery on the north side of Elm St, west of Yonge.



James Fleming c. 1880, age 68 years.



Current photo showing the collection of late-19th century heritage buildings located on the north side of Elm just west of Yonge, including (from left to right) the YWCA (now The Elmwood), St. George's Hall (now The Arts and Letters Club) and the James Fleming Buildings.

PB5.3
15 Elm Street



1952 archival photo looking east on Elm Street toward Yonge from Bay Street. The subject property at 15 Elm Street is indicated by the arrow.

PB5.3
15 Elm Street



Looking south at the east elevation with rear concrete block additions completed by 1947 and adjacent to Harry Barberian Lane

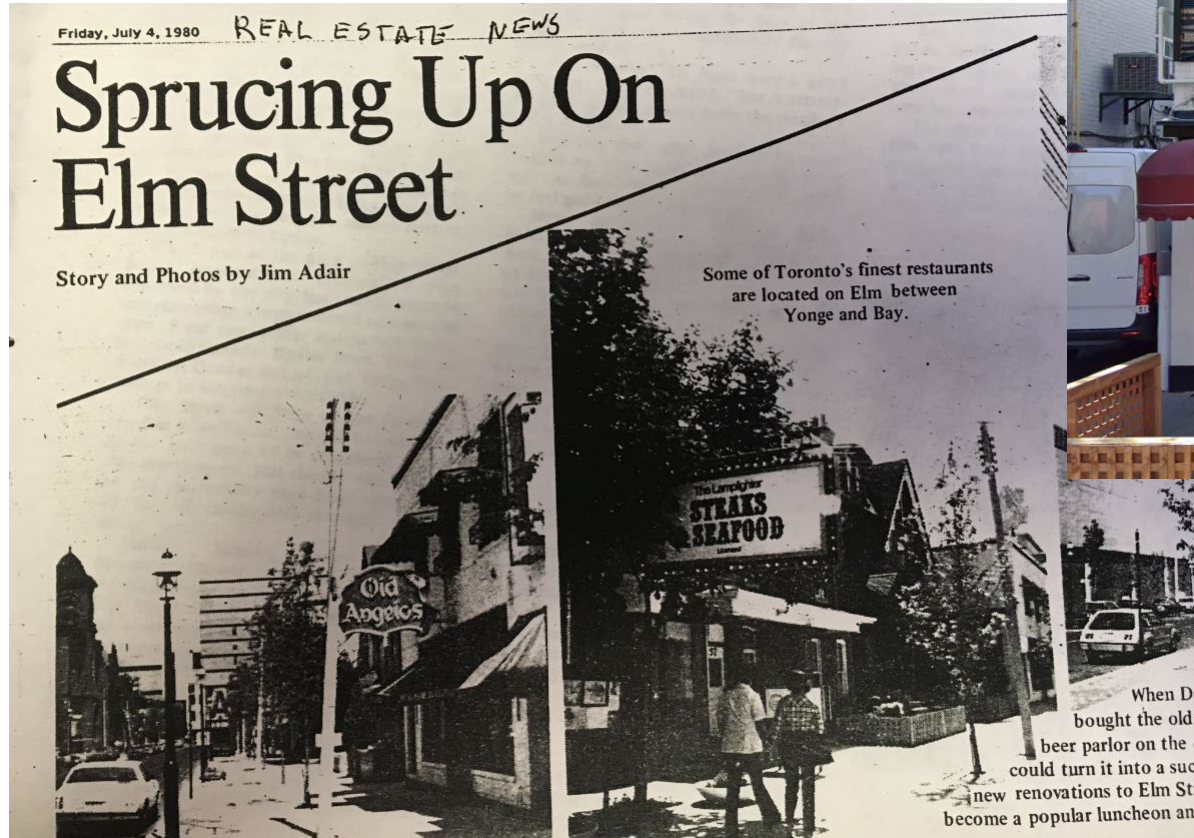


Early 1920s wooden door surround and transom on the principal (north) elevation



Basement interior at 15 Elm Street showing the rubble stone foundation and wooden cross beams

PB5.3
15 Elm Street



7-9 Elm Street, another remaining Confederation-era building located adjacent to 15 Elm and home to Barberian's Steak House since 1959

1980 article showcasing the popular restaurant scene on Elm Street.

PB5.3
15 Elm Street



Contextual photo looking east along the south side of the street and showing the properties east of 15 Elm, including Barberian's Steak House at centre left.



Contextual photo looking east along the south side of the street and showing the heritage properties located at 31-43 and 49 Elm Street, of which 15 Elm forms part of this 19th-century collection of house-form buildings.