

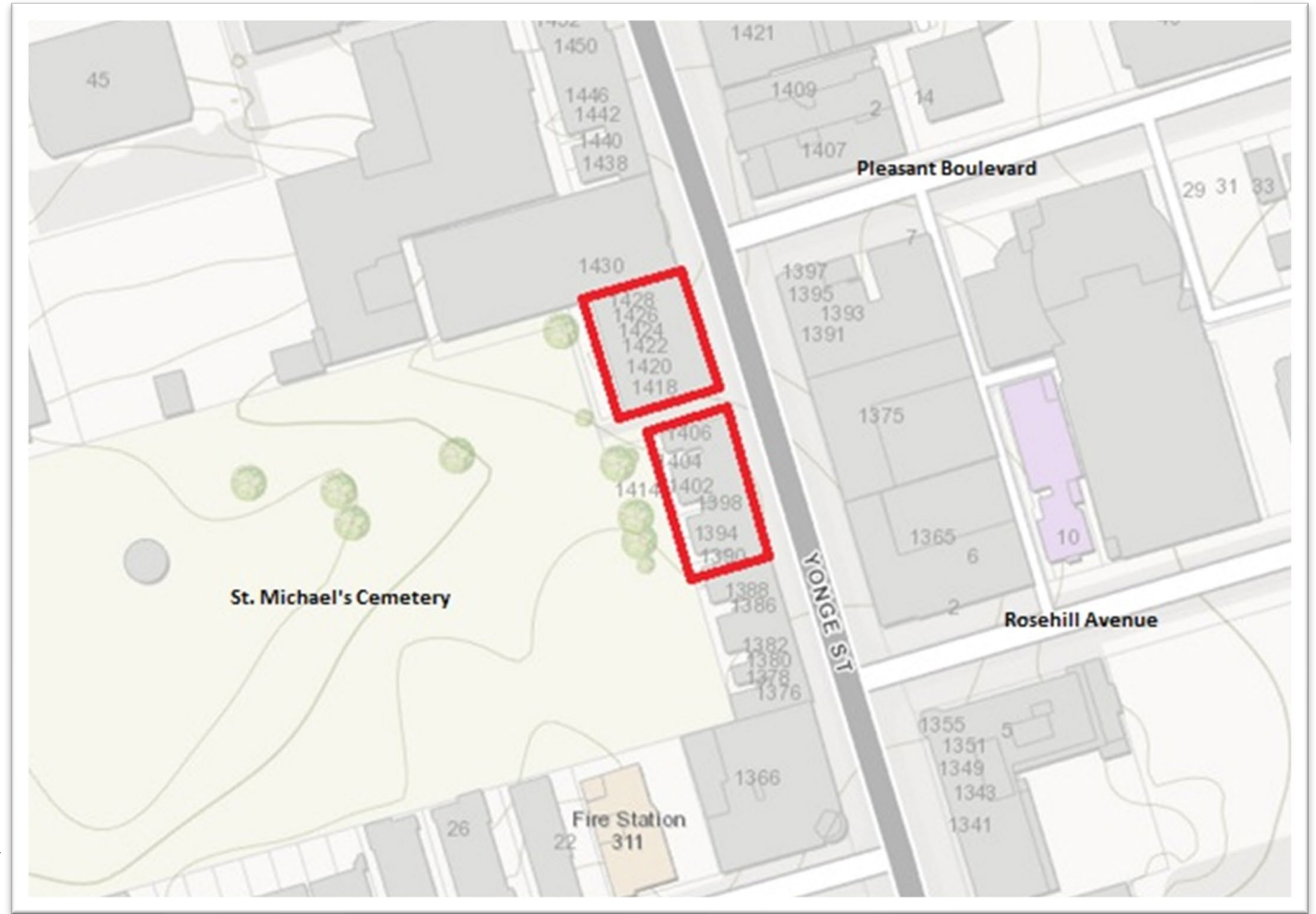


PB6.5

Alterations to Heritage Properties and Authority to Enter into a Heritage Easement Agreement – 1420 Yonge Street and Demolition of Heritage Properties – 1404 and 1406 Yonge Street

1404 -1406 and 1420 Yonge Street

This location map is for information purposes only; the exact boundaries of the property are not shown. The arrow marks the location of the site.



PB6.5

1404 -1406 and 1420 Yonge Street

East (primary) elevation of the main street commercial row at **1390-1406 Yonge Street** (Heritage Planning, 2022)



East (primary) elevation of the main street commercial row at **1420 Yonge Street** (Heritage Planning, 2022)



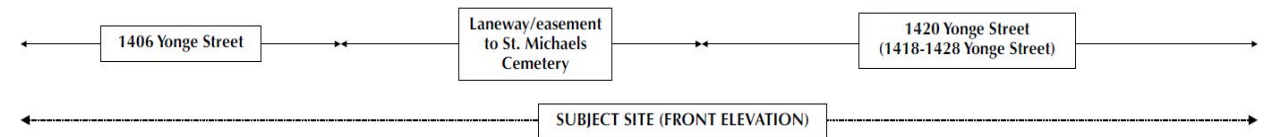
PB6.5

1404 -1406 and 1420 Yonge Street

View of the development site as seen from Yonge Street, looking west through the laneway to St. Michael's Cemetery (GBCA, 2022)



Looking west from the east side of Yonge Street to the subject site, as annotated below.



PB6.5
1404 - 1420 Yonge Street

Scheme approved in July 2022

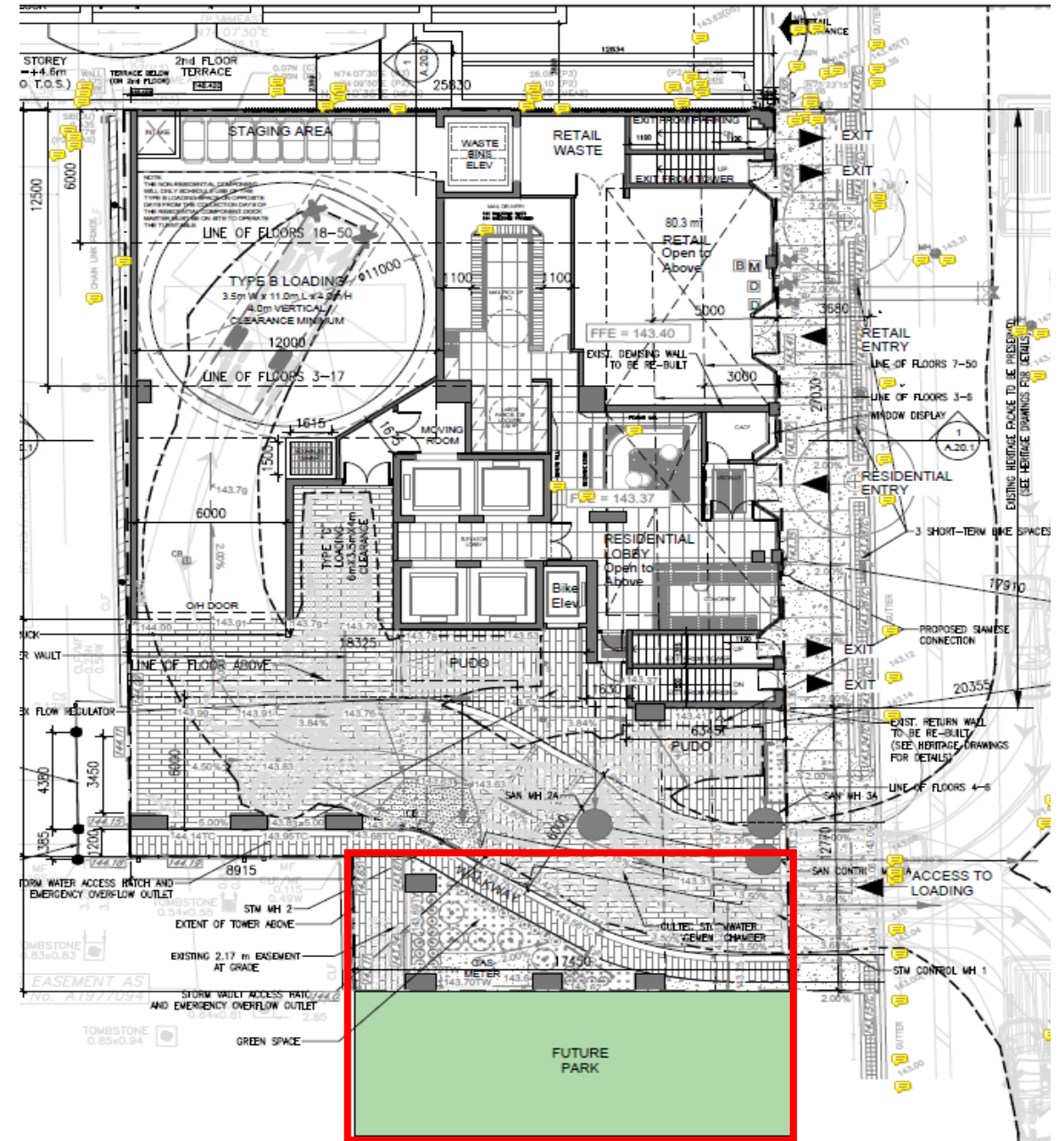


PB6.5

1404 -1406 and 1420 Yonge Street

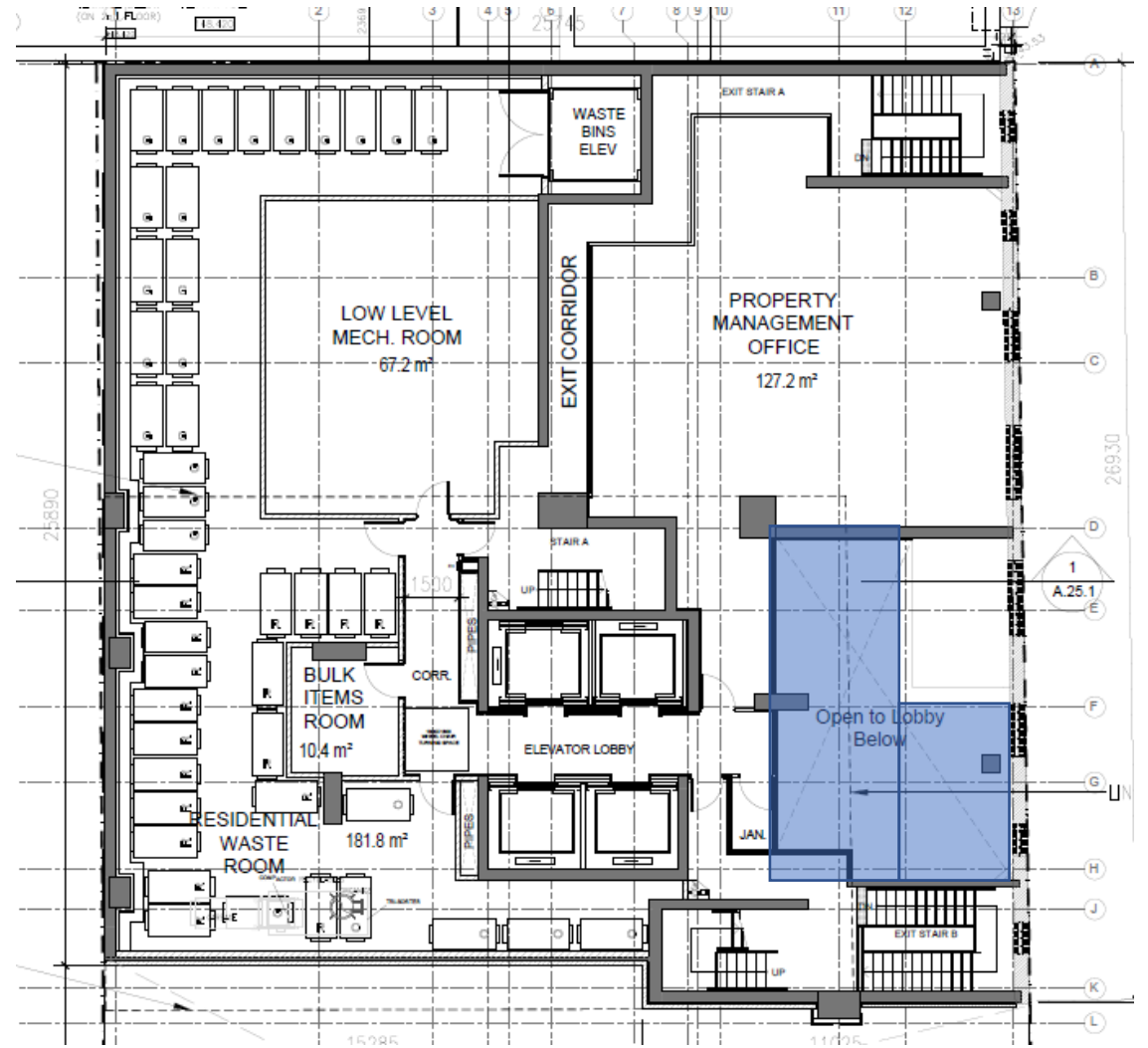
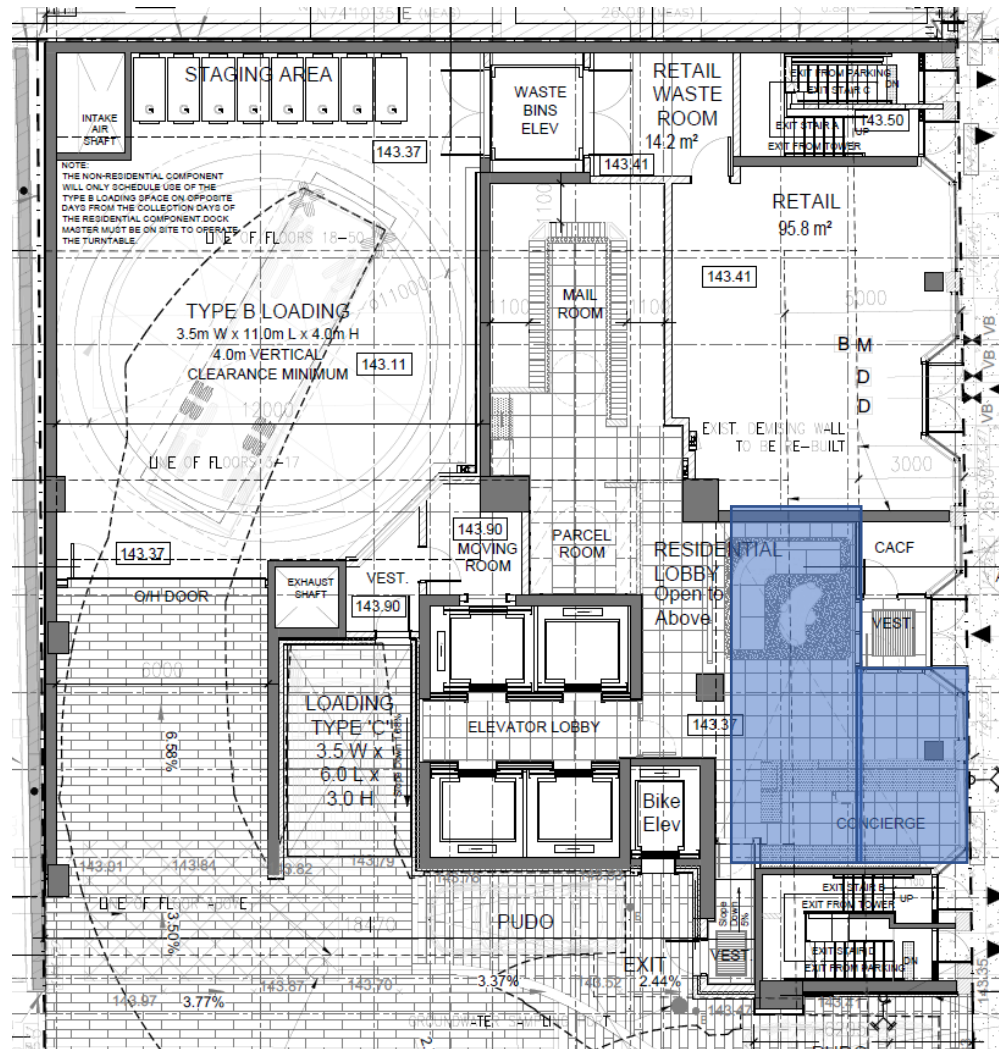


Proposed Site Plan - red outline shows the location of 1404 and 1406 Yonge Street that are proposed to be demolished.



PB6.5

1404 -1406 and 1420 Yonge Street



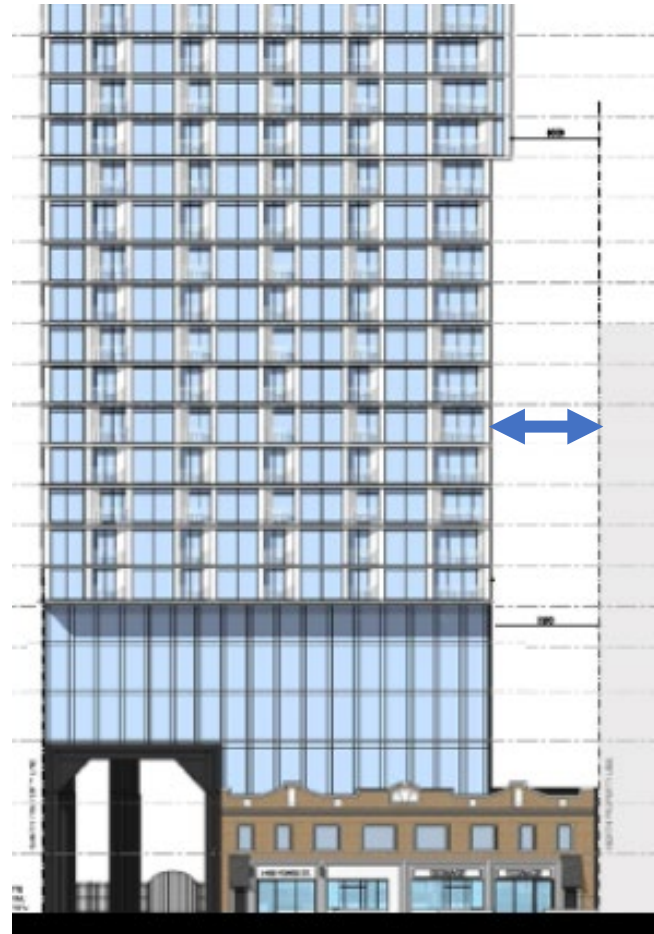
PB6.5

1404 -1406 and 1420 Yonge Street

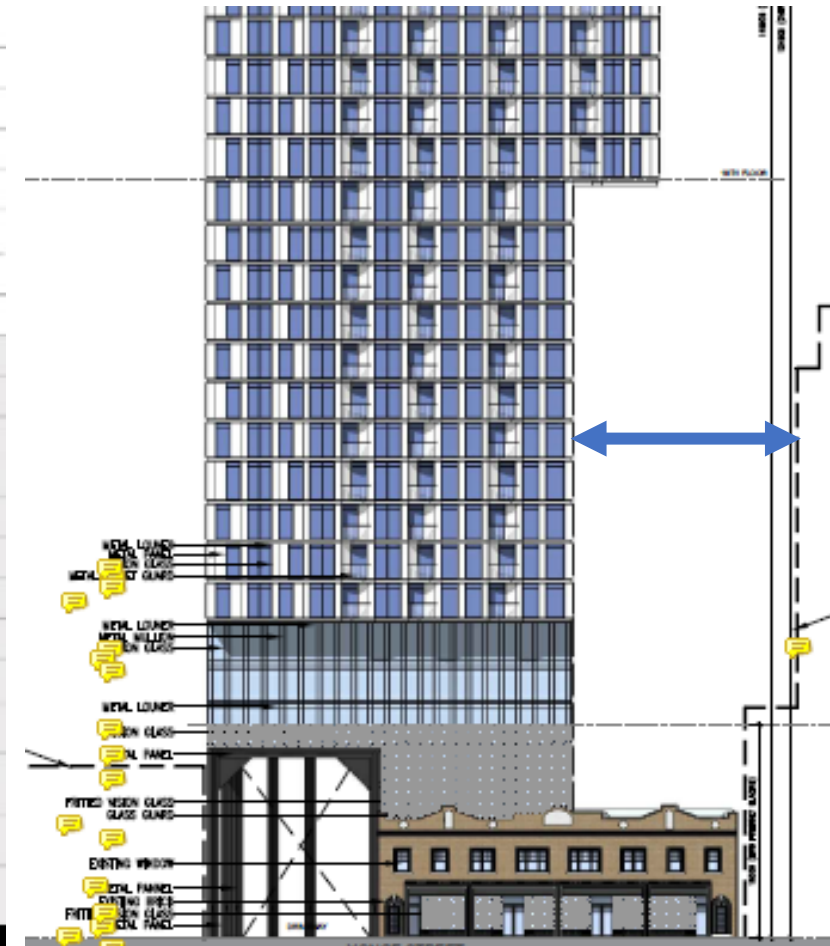
Views from Yonge Street

East elevation on the left shows the proposal that was approved by Council in 2022.

Elevation on the right shows the current proposal with increased separation distance to the property to the north.



Council approval 2022



Current proposal

PB6.5

1404 -1406 and 1420 Yonge Street

Renderings of the view of proposal illustrating
the base of the tower at 1420 Yonge Street. (IBI Group)





PB6.5

1404 -1406 and 1420 Yonge Street

Thank you!