



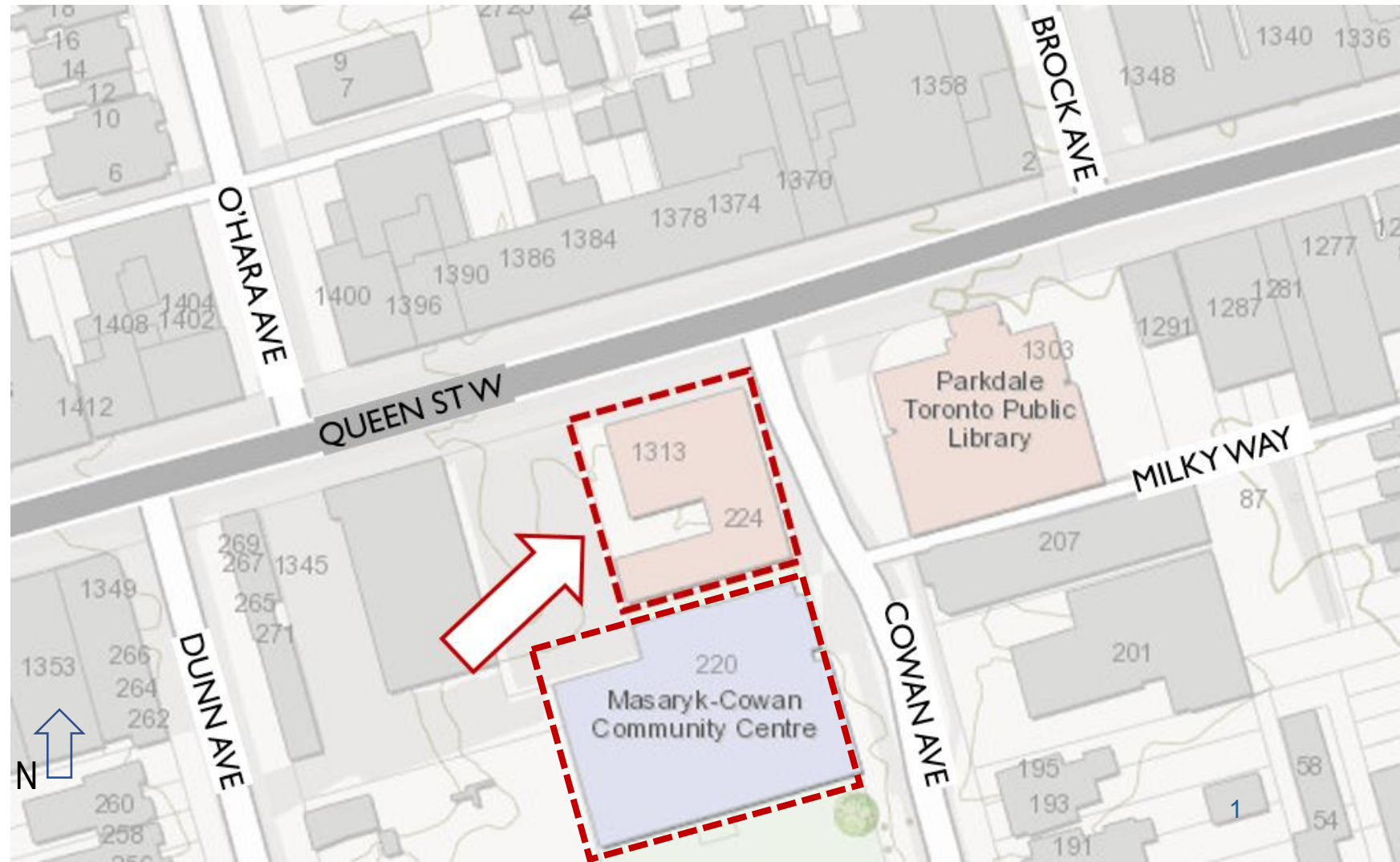
PB10.3

220 Cowan Avenue and 1313 Queen Street West – Alterations to Designated Heritage Properties

PB10.3

220 Cowan Avenue and 1313 Queen Street West

This location map is for information purposes only; the exact boundaries of the properties are not shown. The arrow marks the location of the site.



PB10.3

220 Cowan Avenue and 1313 Queen Street West



Principal (east) elevation of the former Parkdale Curling Club at 220 Cowan Avenue (ERA Architects Inc., 2022)



Principal (east) elevation of the former Fire Hall No.18 at 220 Cowan Avenue (ERA Architects Inc., 2022)

PB10.3

220 Cowan Avenue and 1313 Queen Street West

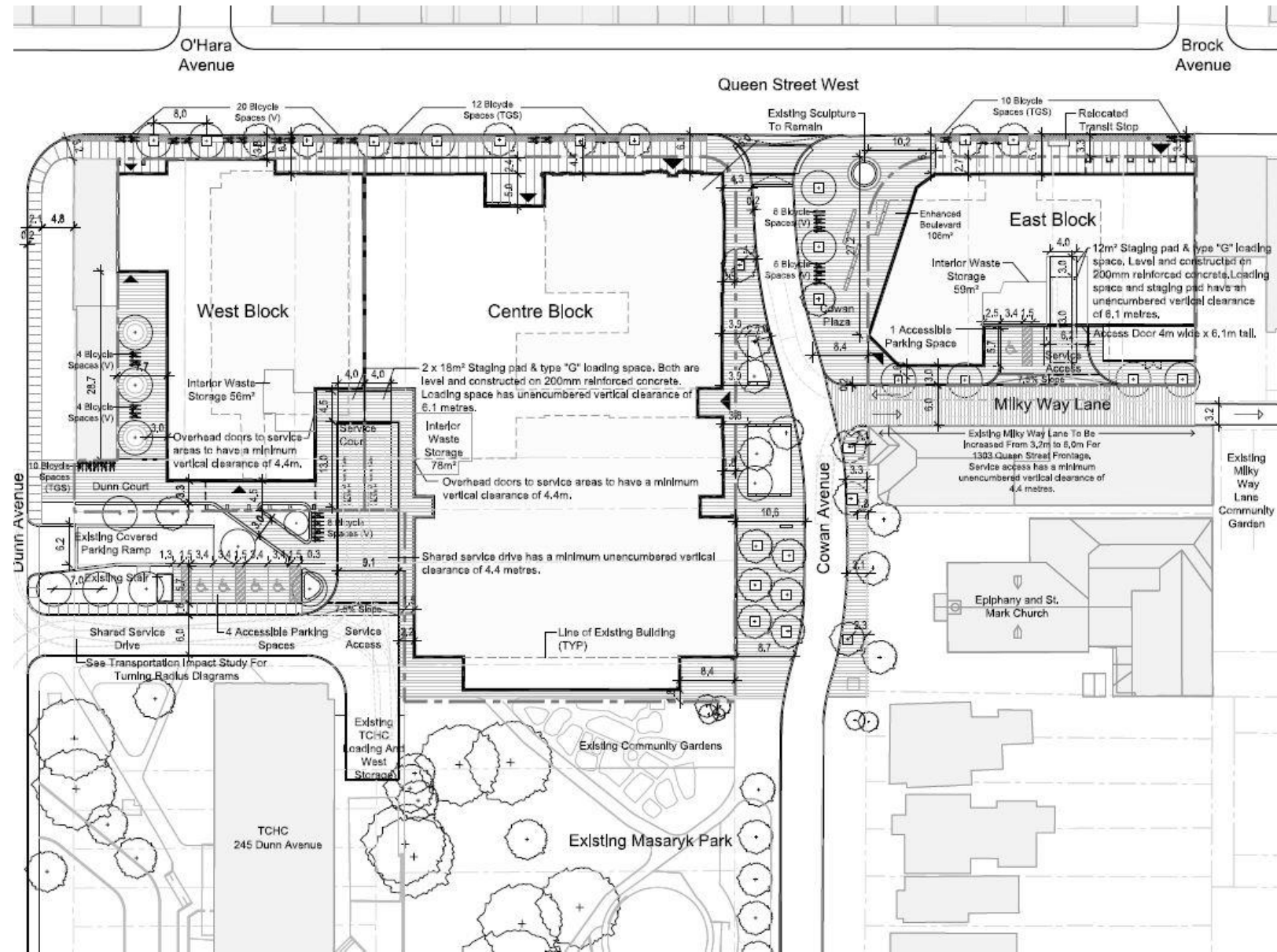


Principal (north) elevation of 1313 Queen Street West
(Heritage Planning, 2023)



East elevation of 1313 Queen Street West
(Heritage Planning, 2023)

220 Cowan Avenue and 1313 Queen Street West



Site Plan (DTAH Architects Limited; July 7, 2023)

PB10.3

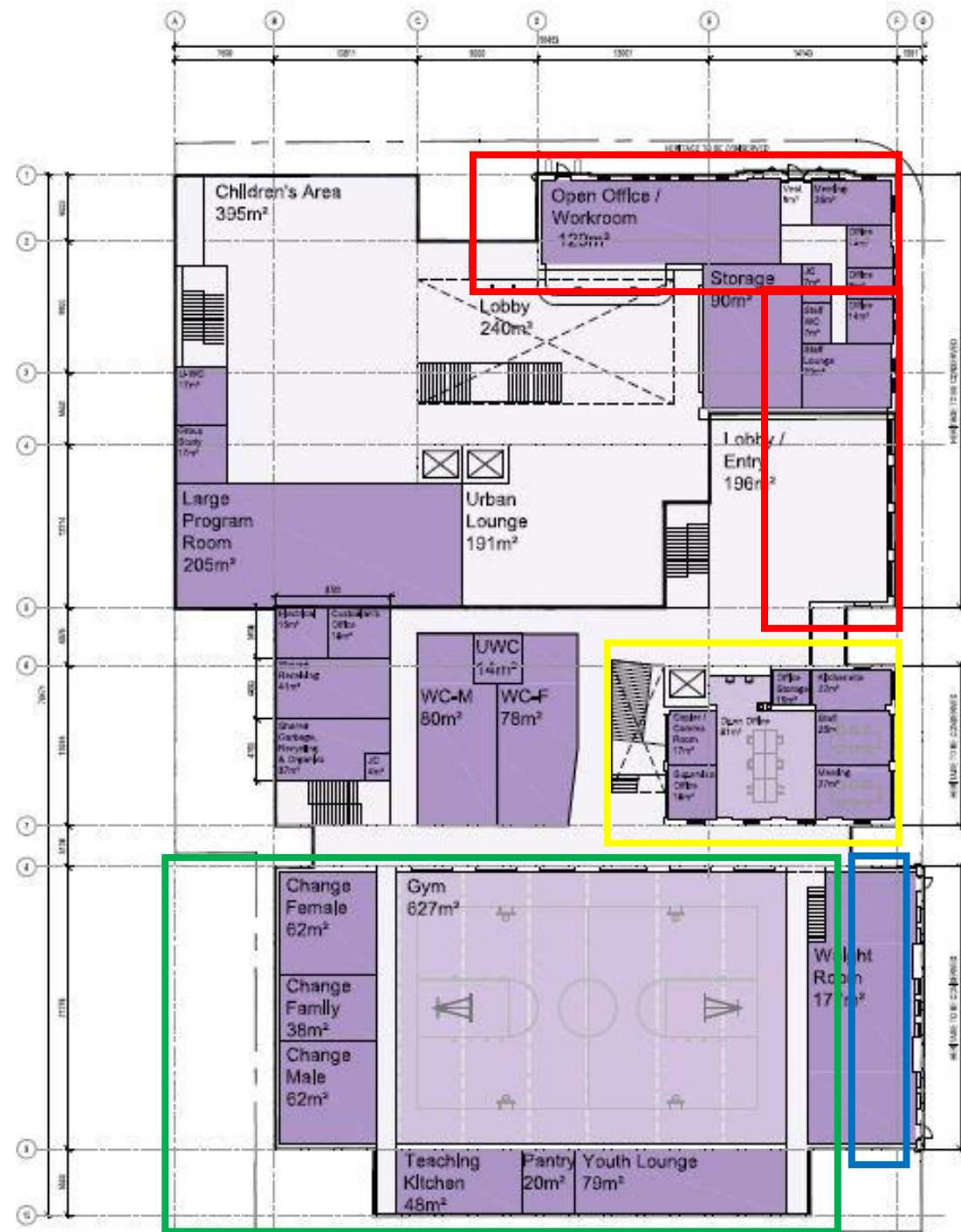
220 Cowan Avenue and 1313 Queen Street West

Parkdale Hub Centre Block level 1 (DTAH Architects Limited, July 7, 2023).

Outlined in red is the approximate portion of the former Police Station No. 6 to be retained.

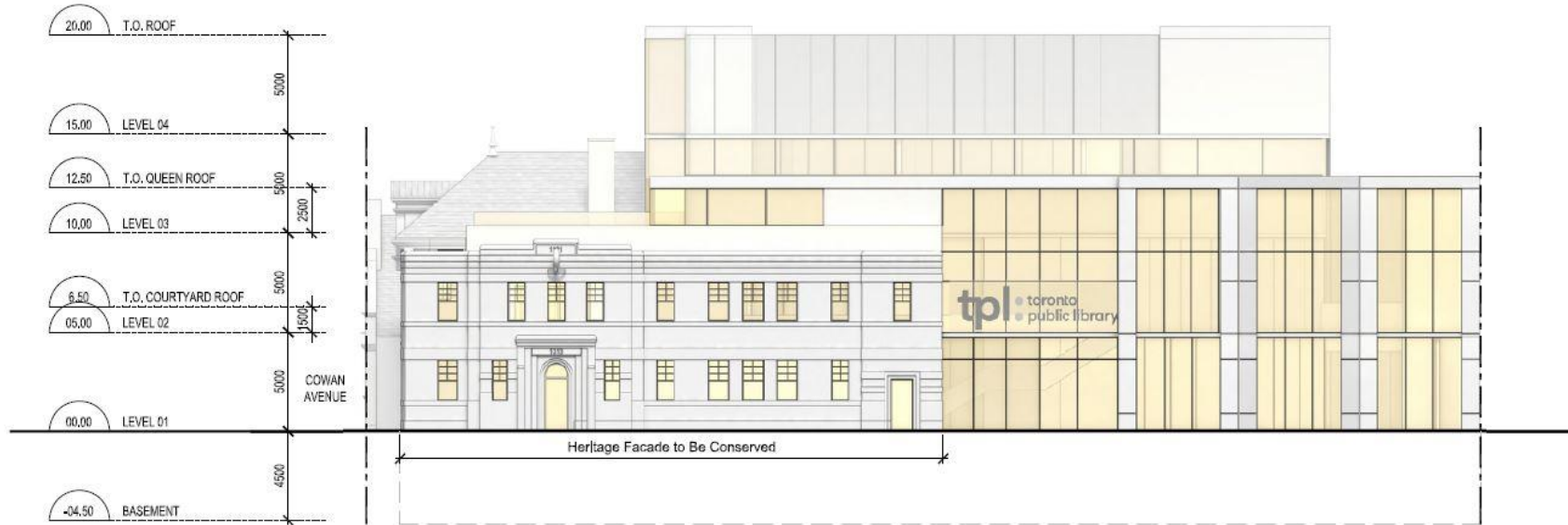
Outlined in yellow is the former Fire Hall No. 18, to be retained as a whole building.

Outlined in blue is the original façade of the former Parkdale Curling Club and outlined in green is the non-original portion of the Parkdale Curling Club. The entirety of the former Parkdale Curling Club is proposed to be retained with alterations to the non-original south side wall.



PB10.3

220 Cowan Avenue and 1313 Queen Street West



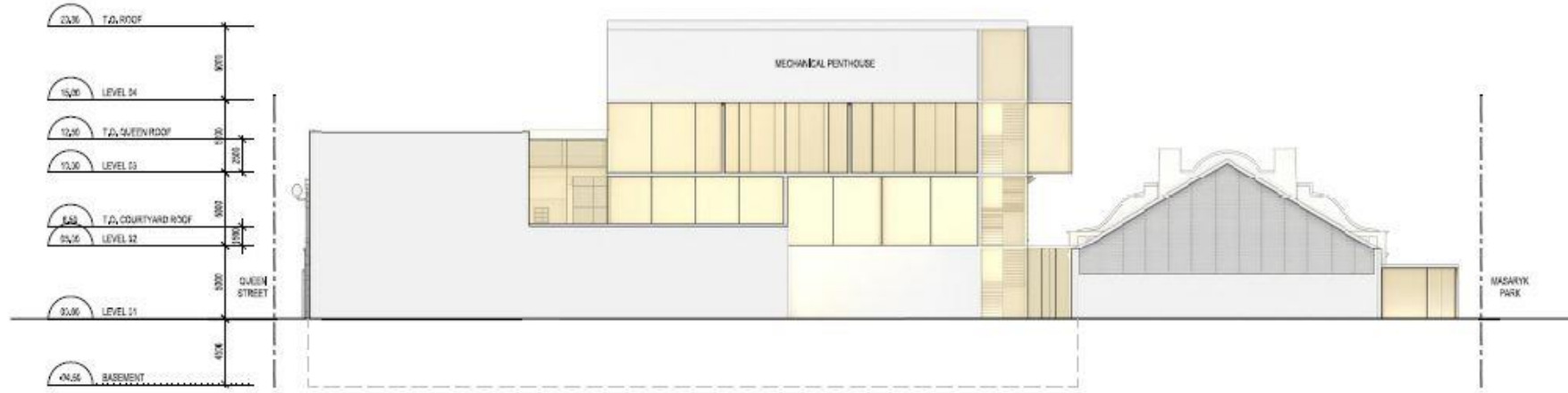
North elevation drawing (DTAH Architects Limited; July 7, 2023)



East elevation drawing (DTAH Architects Limited; July 7, 2023)

PB10.3

220 Cowan Avenue and 1313 Queen Street West



West elevation drawing (DTAH Architects Limited; July 7, 2023)



South elevation drawing (DTAH Architects Limited; July 7, 2023)

PB10.3

220 Cowan Avenue and 1313 Queen Street West



PB10.3

220 Cowan Avenue and 1313 Queen Street West



PB10.3

220 Cowan Avenue and 1313 Queen Street West

